



RAMP 1:8  
GRANO

RAMP 1:8  
GRANO

1020mm HIGH CONCRETE WALL  
TO ENGINEER'S DESIGN & SPEC

25 PARKING BAYS  
LVL 96 430  
GRANO

RAMP 1:8  
GRANO

1020mm HIGH CONCRETE WALL  
TO ENGINEER'S DESIGN & SPEC

BATTERY RM  
LVL 97 110  
GRANO

LECTURE RM - AC SPLIT UNITS  
COMPRESSORS POWERED BY  
PHOTOVOLTAIC PANELS ON ROOF

FIRE ESCAPE  
LVL 97 110  
GRANO

30 PARKING BAYS  
LVL 96 940  
GRANO

230 x 460 RE CONCRETE COLUMN  
TO ENGINEER'S DESIGN & SPEC

PLATFORM  
LVL 97 110  
TILES

LIFT LOBBY  
LVL 97 110  
PIGMENTED SCREED

PLATFORM  
LVL 97 110  
TILES

LIFT 1  
LIFT 2

STORE RM  
LVL 97 110  
GRANO

30 PARKING BAYS INCL  
2 DISABLED PARKING BAYS  
LVL 96 940  
GRANO

111 STORE RM  
LVL 97 025  
GRANO

STORE RM  
LVL 97 025  
GRANO

STORE RM  
LVL 97 025  
GRANO

STORE RM  
LVL 97 025  
GRANO

GALVANIZED MENTS GRID OVER  
690 x 690 STORMWATER DRAIN TO  
COLLECT IN RAINWATER TANK

345mm RE CONCRETE RETAINING WALL TANKED  
WITH 1000 MICRON GUNPLAS HYPERLASTIC ORANGE  
TANKING MEMBRANE TO BE PROTECTED BY A  
SINGLE BRICK SKIN ALL TO ENGINEER'S DESIGN & SPEC.

345mm RE CONCRETE RETAINING WALL TANKED  
WITH 1000 MICRON GUNPLAS HYPERLASTIC ORANGE  
TANKING MEMBRANE TO BE PROTECTED BY A  
SINGLE BRICK SKIN ALL TO ENGINEER'S DESIGN & SPEC.

1020mm HIGH CONCRETE WALL  
TO ENGINEER'S DESIGN & SPEC

230 x 460 RE CONCRETE COLUMN  
TO ENGINEER'S DESIGN & SPEC

485mm DIA. RE CONCRETE COLUMN  
TO ENGINEER'S DESIGN & SPEC

230 x 460 RE CONCRETE COLUMN  
TO ENGINEER'S DESIGN & SPEC

230 x 460 RE CONCRETE COLUMN  
TO ENGINEER'S DESIGN & SPEC

1020mm HIGH CONCRETE WALL  
TO ENGINEER'S DESIGN & SPEC

1020mm HIGH CONCRETE WALL  
TO ENGINEER'S DESIGN & SPEC

1020mm HIGH CONCRETE WALL  
TO ENGINEER'S DESIGN & SPEC

GRILL OPENINGS WITH  
SOLAR POWERED FANS

1020mm HIGH CONCRETE WALL  
TO ENGINEER'S DESIGN & SPEC

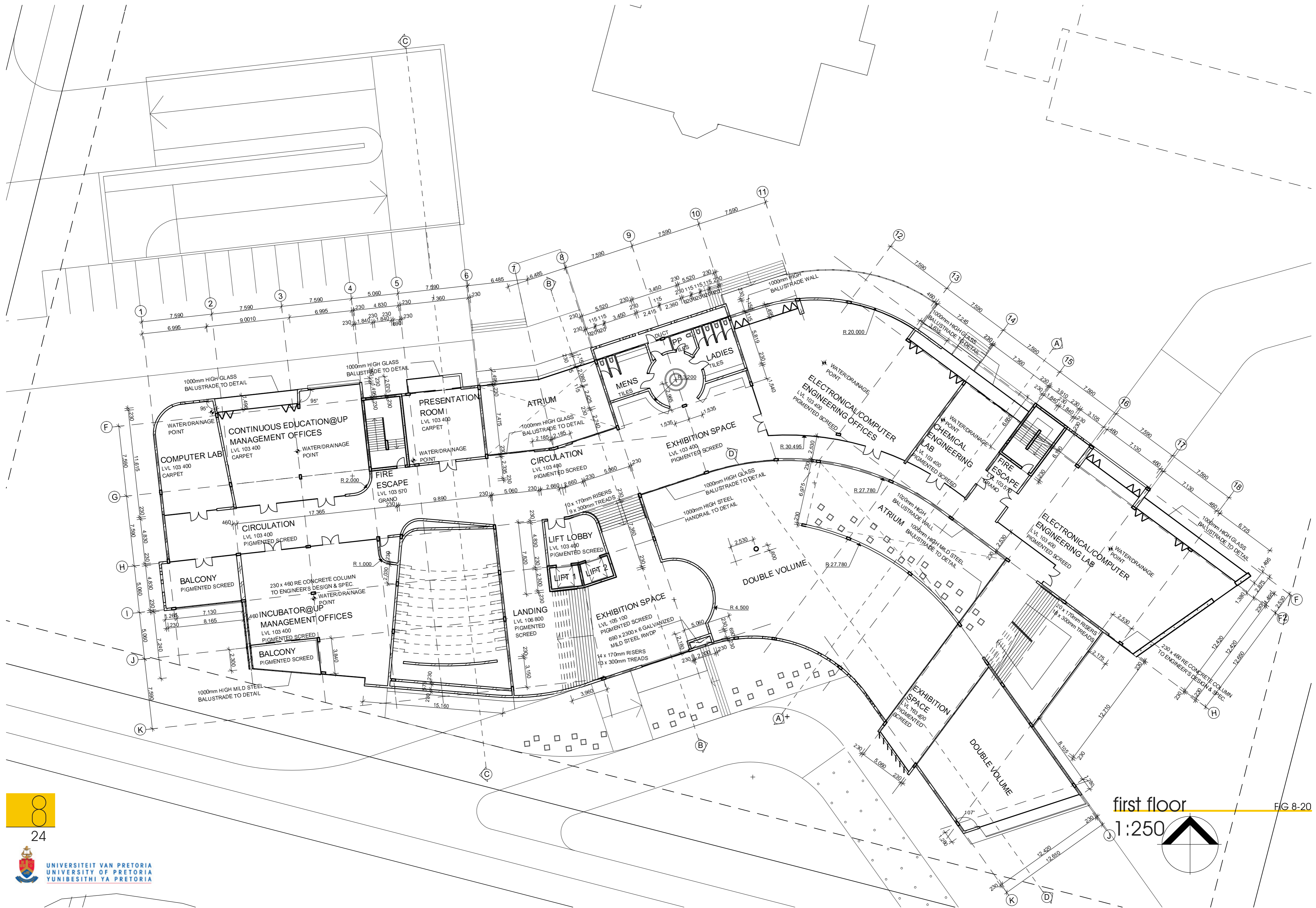
345mm RE CONCRETE RETAINING WALL TANKED  
WITH 1000 MICRON GUNPLAS HYPERLASTIC ORANGE  
TANKING MEMBRANE TO BE PROTECTED BY A  
SINGLE BRICK SKIN ALL TO ENGINEER'S DESIGN & SPEC

GRILL OPENINGS WITH  
SOLAR POWERED FANS

345mm RE CONCRETE RETAINING WALL TANKED  
WITH 1000 MICRON GUNPLAS HYPERLASTIC ORANGE  
TANKING MEMBRANE TO BE PROTECTED BY A  
SINGLE BRICK SKIN ALL TO ENGINEER'S DESIGN & SPEC.

345mm RE CONCRETE RETAINING WALL TANKED  
WITH 1000 MICRON GUNPLAS HYPERLASTIC ORANGE  
TANKING MEMBRANE TO BE PROTECTED BY A  
SINGLE BRICK SKIN ALL TO ENGINEER'S DESIGN & SPEC.





first floor

1:250

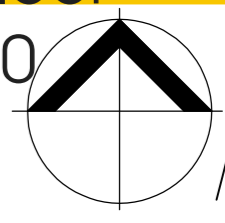
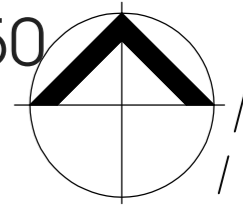
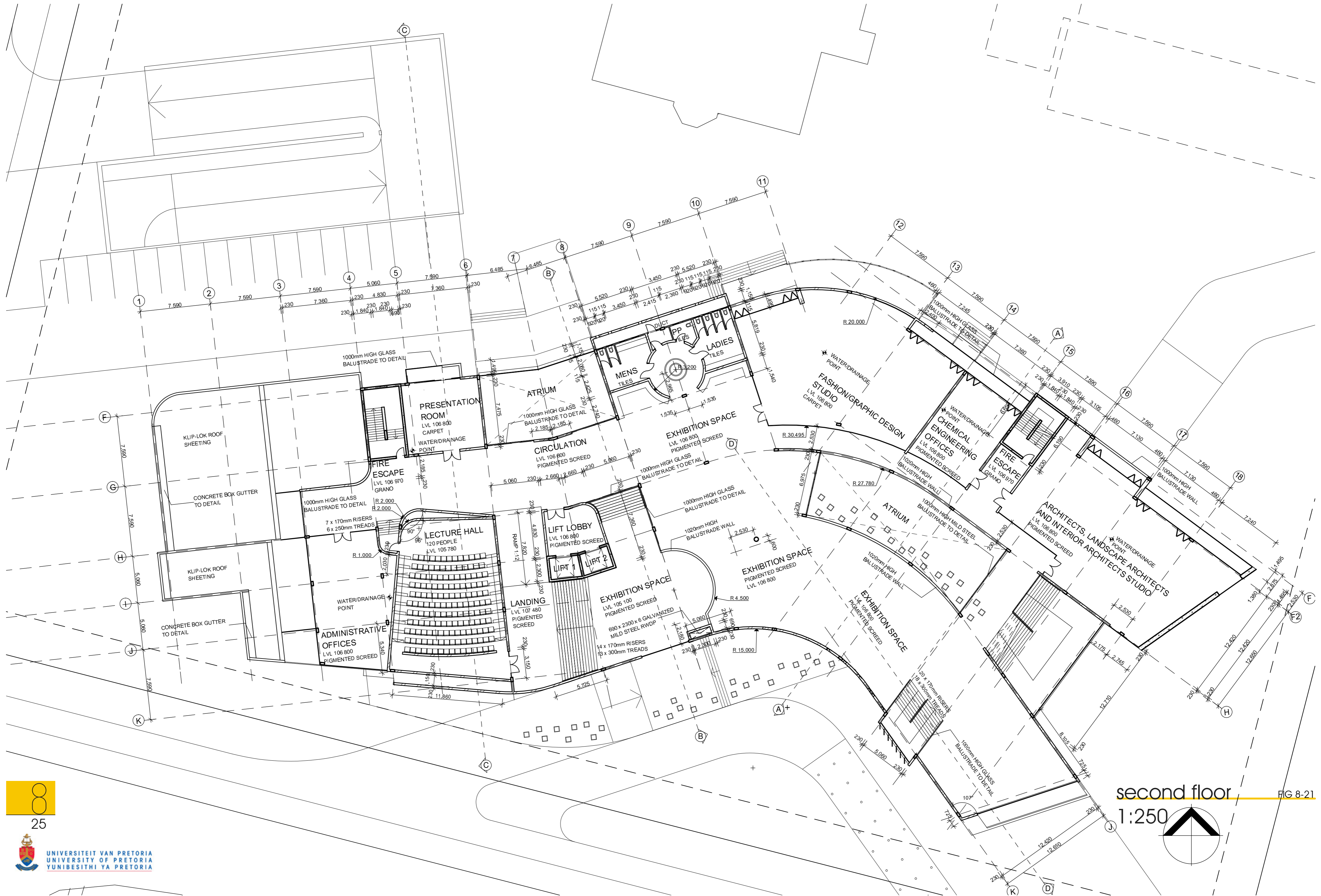


FIG 8-20



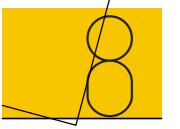
24



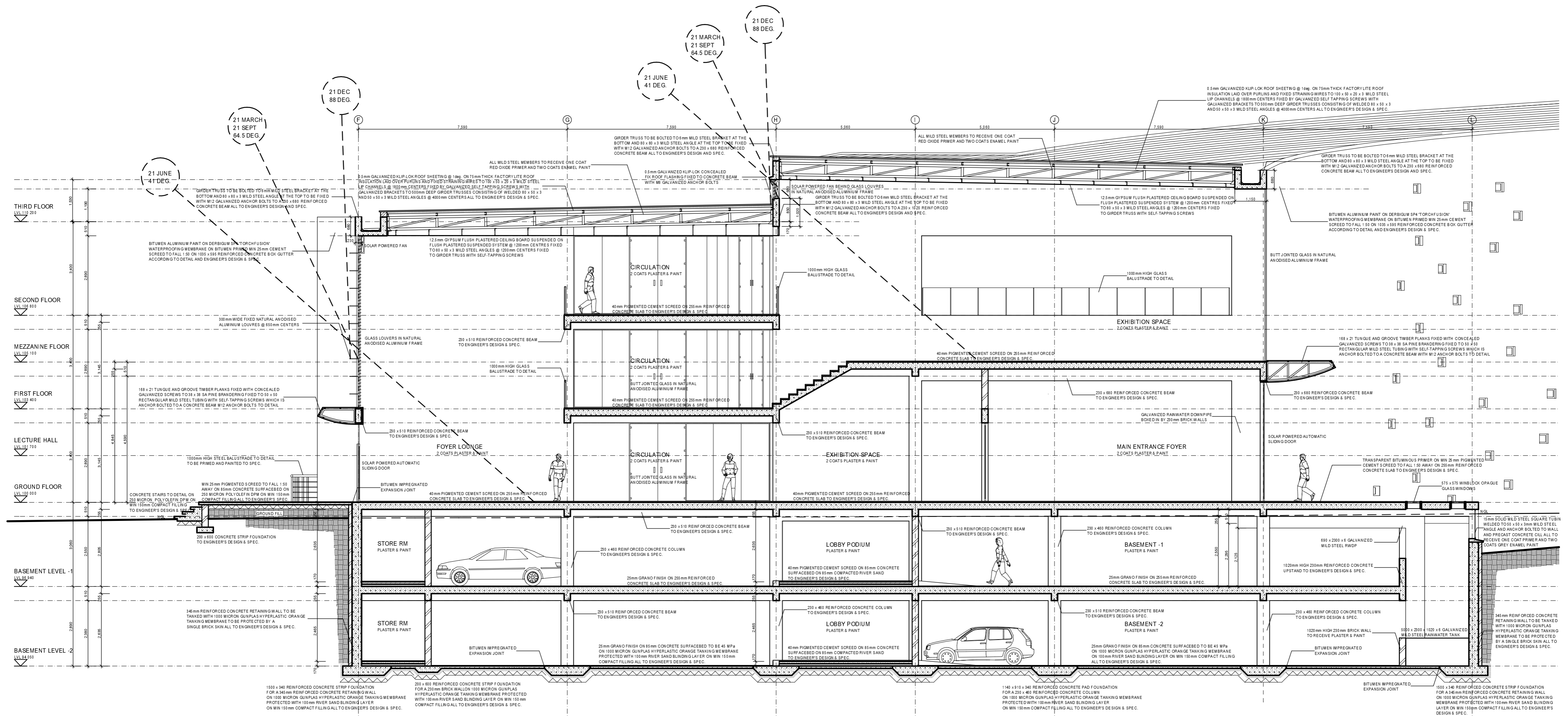


site plan  
1:500

FIG 8-23



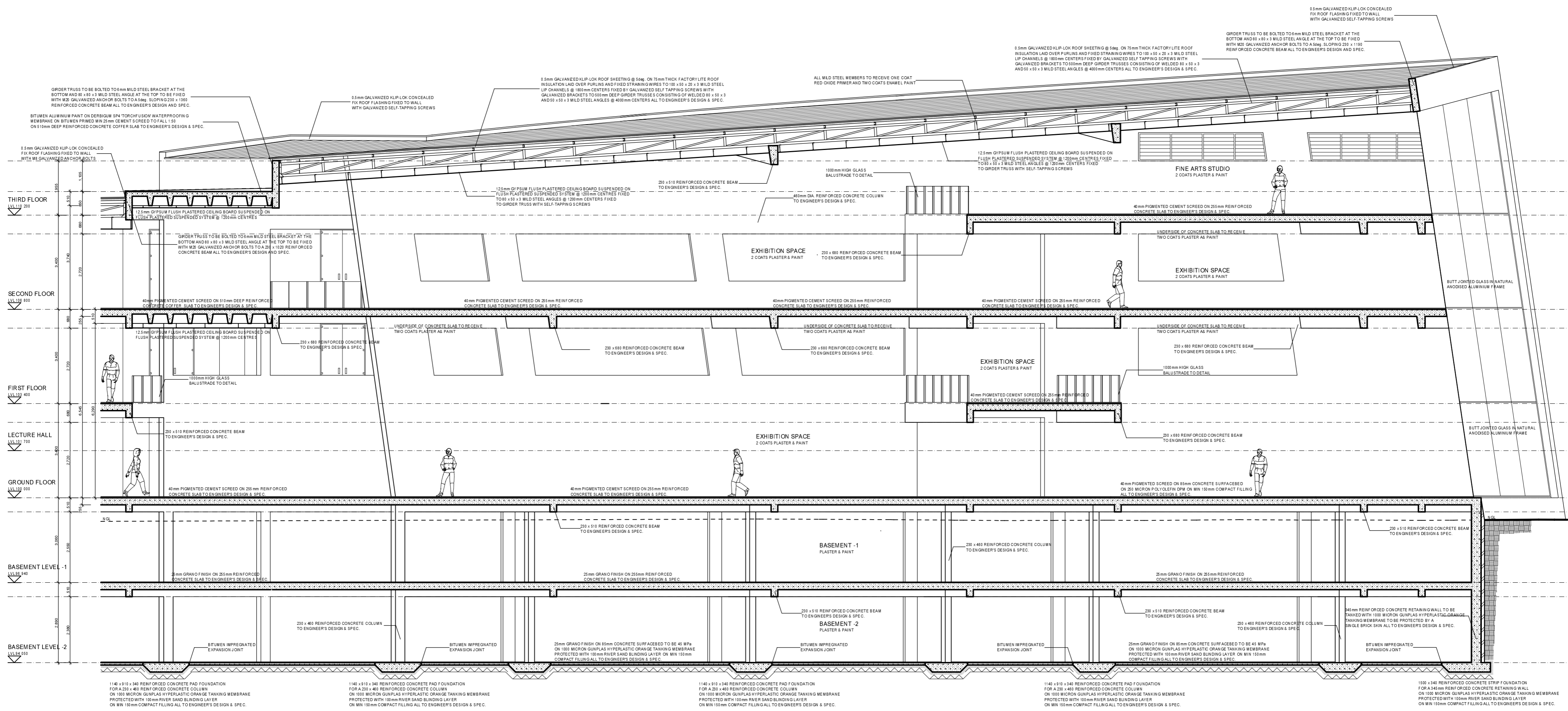


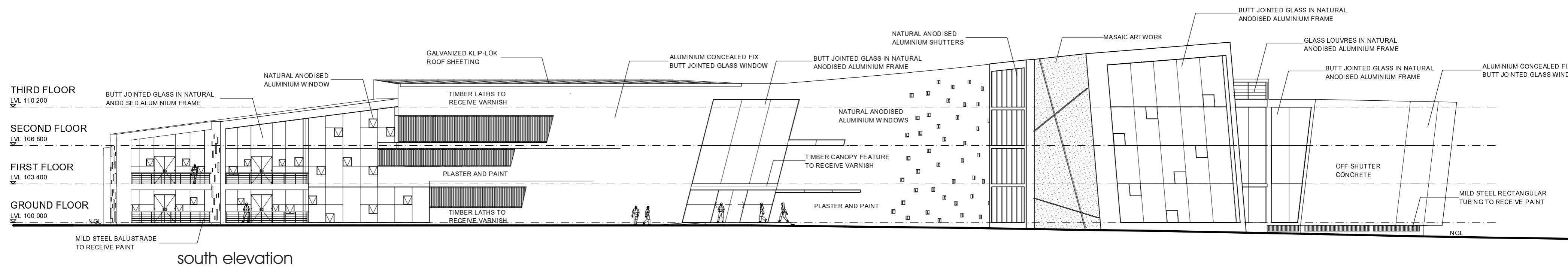
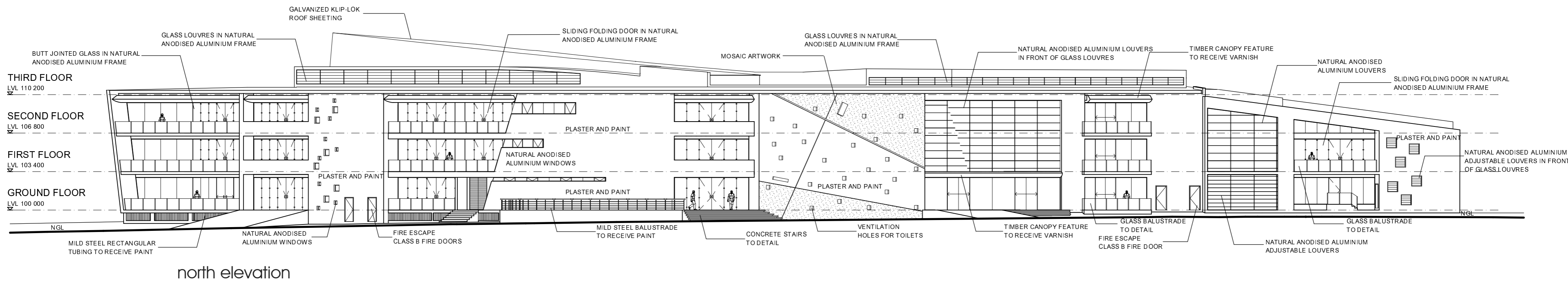


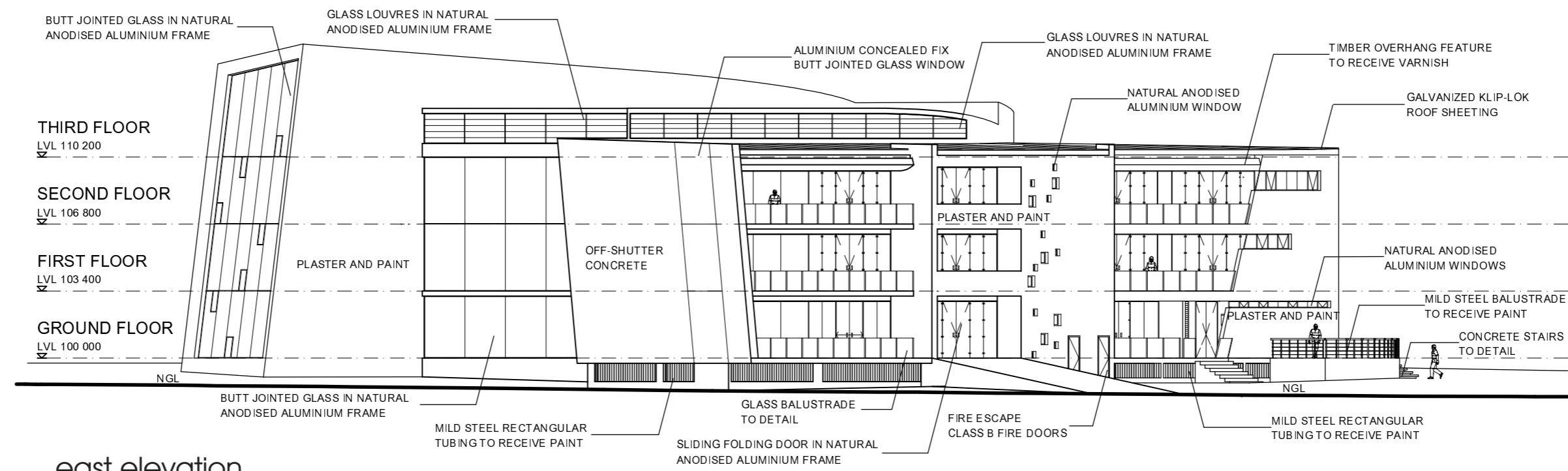
section b-b  
1:100  
FIG 8-25



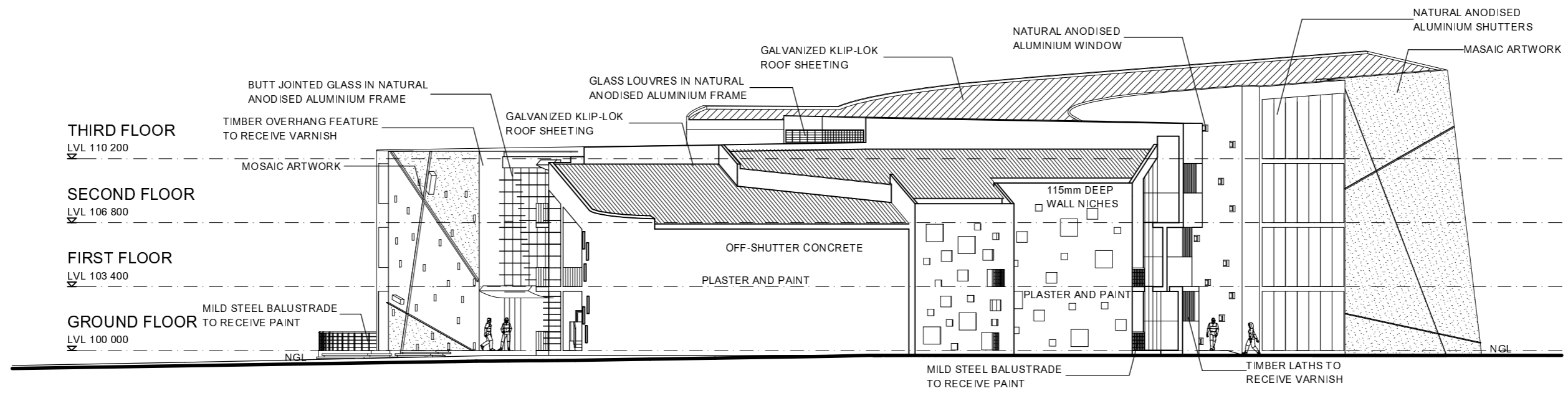








east elevation



west elevation





## chapter 1

FIGURE 1-1: ANTOINETTE UYS/UNIVERSITY OF PRETORIA  
FIGURE 1-2: JENNA BURCHELL/UNIVERSITY OF PRETORIA

## chapter 2

FIGURE 2-1: BIBI SLIPPERS/ UNIVERSITY OF PRETORIA  
FIGURE 2-2: AFRICAN CONTINENT  
FIGURE 2-3: CONTEXT OF PRETORIA  
FIGURE 2-4: CITY CONTEXT  
FIGURE 2-5: CITY FRAMEWORK  
FIGURE 2-6: URBAN FOCUS  
FIGURE 2-7: 3D IMAGE OF THE UNIVERSITY OF PRETORIA  
FIGURE 2-8: FIGURE GROUND STUDY - URBAN STITCHING  
FIGURE 2-9: 3D IMAGE - URBAN STITCHING  
FIGURE 2-10: URBAN FRAMEWORK OF THE UNIVERSITY  
FIGURE 2-11: FIGURE GROUND STUDY - FOCUS AREA  
FIGURE 2-12: 3D IMAGE - FOCUS AREA  
FIGURE 2-13: FIGURE GROUND STUDY - FRONT FACADE  
FIGURE 2-14: FIGURE GROUND STUDY - LYNNWOOD ROAD  
NARRATIVE  
FIGURE 2-15: 3D IMAGE - LYNNWOOD ROAD NARRATIVE  
FIGURE 2-16: 3D IMAGE - LYNNWOOD ROAD NARRATIVE  
FIGURE 2-17: 3D IMAGE - LYNNWOOD ROAD NARRATIVE  
FIGURE 2-18: PHOTOGRAPH - LYNNWOOD ROAD  
NARRATIVE

## introduction

Uys, Antoinette. 2007. **Unknown**. Pretoria: University of Pretoria  
Burchell, Jenna. 2007. **Lilies**. Pretoria: University of Pretoria

## context

Slippers, Bibi. 2007. **Verdwaaltaal**. Pretoria: University of Pretoria  
Author, Drawing

Google Earth. 2008. Google TM.  
Author, Drawing

Google Earth. 2008. Google TM.  
Author, Three dimensional model  
Author, Drawing  
Author, Three dimensional model  
Author, Drawing

Author, Three dimensional model  
Author, Drawing

Author, Three dimensional model

Author, Photograph

## list of figures

FIGURE 2-19: ENVIRONMENTAL IMPACT OF BUILDINGS

## chapter 3

FIGURE 3-1: BIBI SLIPPERS/ UNIVERSITY OF PRETORIA

FIGURE 3-2: SHELL, SCENERY AND REQUIREMENTS

FIGURE 3-3: INTERNAL PARTITIONING

FIGURE 3-4: OPEN BUILDING

FIGURE 3-5: SERVICES FOR OPEN BUILDING

FIGURE 3-6: OPEN BUILDING - CREATIVE SPACE

FIGURE 3-7: CONVENTIONAL - CREATIVE

FIGURE 3-8: ROAD CROSSING

FIGURE 3-9: PEDESTRIAN PATH AND BICYCLE LANE

FIGURE 3-10: SHOPPING STREET

FIGURE 3-11: FOUR STOREY LIMIT

## chapter 4

FIGURE 4-1: REBECCA EMERY/ UNIVERSITY OF PRETORIA

FIGURE 4-2: LANDSCAPE FORMATION ONE - SECTION 1

FIGURE 4-3: LANDSCAPE FORMATION ONE - SECTION 2

FIGURE 4-4: LANDSCAPE FORMATION ONE - SECTION 3

FIGURE 4-5: LANDSCAPE FORMATION ONE - FRONT PERSPECTIVE

FIGURE 4-6: LANDSCAPE FORMATION ONE - REAR PERSPECTIVE

FIGURE 4-7: NATIONAL MUSEUM OF XXI CENTURY ARTS - PLANS

FIGURE 4-8: NATIONAL MUSEUM OF XXI CENTURY ARTS -PHYSICAL MODEL

Levin, H. 1997. **Systematic Evaluation and Assessment of Building Environmental Performance**. Paris: Buildings and Environment.

## literature study

Slippers, Bibi. 2007. **White Noise**. Pretoria: University of Pretoria  
Author, Sketch

## precedent study

Emery, Rebecca. 2007. **Unknown**. Pretoria: University of Pretoria

Hadid, Zaha. 1999. **Landscape Formation One**. Weil am Rhein, Germany

Hadid, Zaha. 2008. **National Museum of XXI Century Arts**. Rome, Italy

## list of figures

S  
S  
E  
h  
t  
f  
P  
R  
O  
f  
f  
h  
A  
C  
h  
M  
A  
C  
h



FIGURE 4-9: NATIONAL MUSEUM OF XXI CENTURY ARTS - 3D MODEL

FIGURE 4-10: OFFICE SPACE

FIGURE 4-11: OFFICE SPACE

FIGURE 4-12: OFFICE SPACE

FIGURE 4-13: STUDIO SPACE

FIGURE 4-14: LABORATORY

FIGURE 4-15: STUDIO SPACE

FIGURE 4-16: CIRCULATION SPACE

FIGURE 4-17: EXHIBITION SPACE

FIGURE 4-18: EXHIBITION SPACE

FIGURE 4-19: YOKOSUKA MUSEUM OF ART

FIGURE 4-20: EXHIBITION SPACE

FIGURE 4-21: EXHIBITION SPACE

FIGURE 4-22: EXHIBITION SPACE

FIGURE 4-23: IMM COLOGNE

FIGURE 4-24: EXHIBITION SPACE

## chapter 5

FIGURE 5-1: RETHA FERGUSON/ UNIVERSITY OF PRETORIA

FIGURE 5-2: SITE CONTEXT

FIGURE 5-3: SITE ANALYSIS

Hadid, Zaha. 2008. **National Museum of XXI Century Arts**. Rome, Italy

Phaidon. 2005. **10 x 10: 10 Critics, 100 Architects**. London: Phaidon Press Limited

Miralles, Enric. 2007. **Benedetta Tagliabue**. Palafoalls, Spain

Adjaye Associates. 2004. **Idea Store**. London

GA Document. 2007. **99**. Japan: ADA Edita

GA Document. 2007. **99**. Japan: ADA Edita

GA Document. 2007. **99**. Japan: ADA Edita

Phaidon. 2005. **10 x 10: 10 Critics, 100 Architects**. London: Phaidon Press Limited

Hadid, Zaha. 2007. **Architecture and Design, Design Museum**. London, United Kingdom

GA Document. 2008. **100**. Japan: ADA Edita

Yamamoto, Riken. 2006. **Yokosuka Museum of Art**. Kanakawa, Japan

GA Document. 2008. **100**. Japan: ADA Edita

Deutsche Bank. 2005. **25 Years Collection, Deutsche Guggenheim**. Berlin, Germany

GA Document. 2008. **100**. Japan: ADA Edita

Hadid, Zaha. 2007. **IMM Cologne**. Cologne, Germany

Phaidon. 2005. **10 x 10: 10 Critics, 100 Architects**. London: Phaidon Press Limited

## site analysis & concept

Ferguson, Retha. 2007. **Unknown**. Pretoria: University of Pretoria

Author, Drawing

Author, Sketch

## list of figures

FIGURE 5-4: GLASKAS  
FIGURE 5-5: BRISTOW HALL  
FIGURE 5-6: PASTORIE  
FIGURE 5-7: AERIAL PHOTOGRAPH OF SITE  
FIGURE 5-8: LYNNWOOD ROAD FRONTAGE  
FIGURE 5-9: AERIAL VIEW OF SITE  
FIGURE 5-10: CONCEPT MODEL  
FIGURE 5-11: INITIAL MASS MODEL  
FIGURE 5-12: SPACE DEVELOPMENT  
FIGURE 5-13: INTERFACE  
FIGURE 5-14: GROUND FLOOR SPATIAL RELATIONSHIPS  
FIGURE 5-15: FIRST FLOOR SPATIAL RELATIONSHIPS  
FIGURE 5-16: SECOND FLOOR SPATIAL RELATIONSHIPS  
FIGURE 5-17: THIRD FLOOR SPATIAL RELATIONSHIPS  
FIGURE 5-18: DERIVED SHAPE  
FIGURE 5-19: INTERNAL SPATIAL DEVELOPMENT  
FIGURE 5-20: PINNACLE PERFORMANCE  
FIGURE 5-21: LYNNWOOD ROAD NARRATIVE  
FIGURE 5-22: SHAPE OF BUILDING  
FIGURE 5-23: SITE DEVELOPMENT  
FIGURE 5-24: NARRATIVE OF THE BUILDING  
FIGURE 5-25: FINAL CONCEPT MODEL

## chapter 6

FIGURE 6-1: SIMONE MARINUS/ UNIVERSITY OF PRETORIA  
FIGURE 6-2: THE LYNNWOOD ROAD THRESHOLD  
FIGURE 6-3: PUBLIC TRANSPORT

Author, Photograph

Author, Photograph of physical model

Author, Sketch

Author, Drawing

Author, Sketch

Author, Photograph & drawing

Author, Sketch

Author, Drawing

Author, Sketch

Author, Physical model

## urban framework

Marinus, Simone. 2007. **Unknown**. Pretoria: University of Pretoria

Author, Drawing

Google Earth. 2008. Google TM.

## list of figures

MARCH (P L O F) T H E S I S

FIGURE 6-4: BUS PICKUPS  
 FIGURE 6-5: BUS PICKUP - PLAN  
 FIGURE 6-6: BUS PICKUP - SECTION  
 FIGURE 6-7: BASEMENT PARKING  
 FIGURE 6-8: ROAD CROSSINGS  
 FIGURE 6-9: RAISED ROAD CROSSING - PLAN  
 FIGURE 6-10: ENTRANCE MEETING SPACE - PLAN  
 FIGURE 6-11: ENTRANCE MEETING SPACE - SECTION  
 FIGURE 6-12: CONNECTION BETWEEN CAMPUSES  
 FIGURE 6-13: SECTION THROUGH LYNNWOOD ROAD  
 FIGURE 6-14: RESTING SPACE  
 FIGURE 6-15: AERIAL VIEW OF LYNNWOOD ROAD  
 FIGURE 6-16: SEMI-PRIVATE SPACE BEHIND MIXED-USE BUILDING

FIGURE 6-17: PUBLIC SEMI-ENCLOSED SPACES  
 FIGURE 6-18: SHOPS AND COFFEE SHOPS BELOW RESIDENTIAL UNITS

FIGURE 6-19: SEMI-PRIVATE AND PUBLIC SPACES  
 FIGURE 6-20: FOUR STOREY MIXED-USE  
 FIGURE 6-21: FOUR STOREY MIXED-USE  
 FIGURE 6-22: FOUR STOREY MIXED-USE  
 FIGURE 6-23: UNIVERSITY PRECINCT  
 FIGURE 6-24: TYPICAL ELEVATION OF MIXED-USE BUILDINGS  
 FIGURE 6-25: TYPICAL SECTION OF MIXED-USE BUILDINGS  
 FIGURE 6-26: 3D IMAGE OF EXISTING SOUTH CAMPUS  
 FIGURE 6-27: PHOTOGRAPHS OF BUILDINGS FACING LYNNWOOD ROAD  
 FIGURE 6-28: 3D IMAGE OF PROPOSED SOUTH CAMPUS

Author, Drawing

Author, Sketch

Author, Drawing

Author, Sketch

Author, Photograph

Neal, P. 2003. **Urban Villages and the Making of Communities**. New York: Spon Press

Unknown

Unknown

Author, Sketch

Author, Drawing

Author, Sketch

Author, Three dimensional model

Author, Photograph

Author, Three dimensional model

## list of figures

MARCH (P.F.O.) THESE . I S

FIGURE 6-29: PROPOSED SOUTH CAMPUS  
FIGURE 6-30: 3D IMAGE OF EXISTING FRONT FACADE  
FIGURE 6-31: PHOTOGRAPHS OF BUILDINGS FACING LYNNWOOD ROAD  
FIGURE 6-32: 3D IMAGE OF PROPOSED FRONT FACADE  
FIGURE 6-33: EXISTING FACADE OF THE NERINA EXTENTION  
FIGURE 6-34: 3D MODEL OF PROPOSED RENOVATION OF THE NERINA EXTENTION

## chapter 7

FIGURE 7-1: TONI VAN JAARVELDT/ UNIVERSITY OF PRETORIA  
FIGURE 7-2: 3D MODEL OF BUILDING  
FIGURE 7-3: SITE PLAN  
FIGURE 7-4: BASEMENT -2  
FIGURE 7-5: BASEMENT -1  
FIGURE 7-6: GROUND FLOOR  
FIGURE 7-7: FIRST FLOOR  
FIGURE 7-8: SECOND FLOOR  
FIGURE 7-9: THIRD FLOOR  
FIGURE 7-10: SITE PLAN  
FIGURE 7-11: 3D MODEL OF BUILDING  
FIGURE 7-12: 3D MODEL OF BUILDING  
FIGURE 7-13: 3D MODEL OF BUILDING  
FIGURE 7-14: 3D MODEL OF BUILDING  
FIGURE 7-15: 3D MODEL OF BUILDING  
FIGURE 7-16: 3D MODEL OF BUILDING

Author, Drawing  
Author, Three dimensional model  
Author, Photograph  
Author, Three dimensional model  
Author, Photograph  
Author, Three dimensional model

## design discourse

van Jaarsveldt, Toni. 2007. **Unknown**. Pretoria: University of Pretoria  
Author, Three dimensional model  
Author, Drawing

Author, Three dimensional model

## list of figures

FIGURE 7-17: 3D MODEL OF BUILDING  
FIGURE 7-18: 3D MODEL OF BUILDING  
FIGURE 7-19: 3D MODEL OF BUILDING

## chapter 8

FIGURE 8-1: JENNA BURCHELL/ UNIVERSITY OF PRETORIA  
FIGURE 8-2: BASEMENT STRUCTURE  
FIGURE 8-3: GRID STRUCTURE  
FIGURE 8-4: COLUMNS  
FIGURE 8-5: SPANNING ELEMENTS  
FIGURE 8-6: SECTION THROUGH STRUCTURE  
FIGURE 8-7: SECTION A-A  
FIGURE 8-8: SECTION B-B  
FIGURE 8-9: SECTION C-C  
FIGURE 8-10: SECTION THROUGH BASEMENT  
FIGURE 8-11: AREA OF ROOF  
FIGURE 8-12: POSITION OF RAINWATER COLLECTION TANKS  
FIGURE 8-13: RAINWATER CIRCULATION  
FIGURE 8-14: SPLIT UNIT AIR-CONDITIONING - LECTURE HALLS  
FIGURE 8-15: SPLIT UNIT AIR-CONDITIONING - KITCHEN  
FIGURE 8-16: SPLIT UNIT AIR-CONDITIONING - LIFT LOBBY  
FIGURE 8-17: BASEMENT -2  
FIGURE 8-18: BASEMENT -1  
FIGURE 8-19: GROUND FLOOR  
FIGURE 8-20: FIRST FLOOR  
FIGURE 8-21: SECOND FLOOR  
FIGURE 8-26: SECTION C-C

Author, Three dimensional model

## technical investigation

Burchell, Jenna. 2007. **Lilies**. Pretoria: University of Pretoria  
Author, Drawing

list of figures

FIGURE 8-22: THIRD FLOOR  
FIGURE 8-23: SITE PLAN  
FIGURE 8-24: SECTION A-A  
FIGURE 8-25: SECTION B-B  
FIGURE 8-27: SECTION D-D  
FIGURE 8-28 & 29: ELEVATIONS  
FIGURE 8-30 & 31: DETAILS

Author, Drawing

list of figures

Alexander, Christopher; S Ishikawa & M Silwerstein. 1977. **A Pattern Language: Towns, Buildings, Construction**. New York: Oxford University Press.

Bates, T; A Nucci. 1989. **An analysis of small business size and rate discontinuence**. Journal of Small business Management. p. 1-7.

UK Business Incubation. 2007. **Business Incubation Development Framework**. United Kingdom: Mediascope. URL: <http://www.ukbi.co.uk> [April 2008]

Harley, B. 2001. **Business incubators: good old models vs exciting new models**. The First International Workshop on Technology Business Incubators in India. India. 29-31 January

Wikipedia. 2008. **Business Incubators**. United States: Wikimedia Foundation Inc. URL: [http://en.wikipedia.org/wiki/Business\\_incubator](http://en.wikipedia.org/wiki/Business_incubator) [ April 2008]

Department of Environmental Affairs. 1986. **Climate of South Africa: Climate Statistics up to 1984**. South Africa: Government Printer.

Charmaz, Kathy. 2006. **Constructing Grounded Theory: A practical guide through qualitative analysis**. California: Sage Publications Inc.

Artim, Nicholas. 1993. **Cultural Heritage Fire Suppression Systems: Alternatives to Halon 1301**. Massachusetts: WAAC

Marshall, Catherine & Gretchen B Rossman. 2006. **Designing Qualitative Research**. 4th ed. California: Sage Publications Inc.

Brand, Steward. 1994. **How Buildings Learn**. New York: Penguin Books.

## list of references

---

Barrow, Collin. 2001. **Incubators: A realist's guide to the world's new business accelerators**. Chichester: John, Wiley & Sons Ltd.

Richards, Sally. 2002. **Inside Business Incubators & Corporate Venture**. New York: John Wiley & Sons.

Birch, D. 1987. **Job Creation in America: How our smallest companies put most people to work**. New York: The Free Press.

Juta & Co LTD. 2007. **Juta's Statutes of South Africa 2007/2008 Vol 3**. Cape Town: Juta & Co LTD.

Duffy, F; C Cave & J Worthington. **Planning Office Space**. London: The Architectural Press Ltd.

Roure, J; R Keeley. 1990. **Predictors of success in new technology-based ventures**. Journal of Business Venturing. p. 201-220

Leedy, Paul D & Jeanne E Ormrod. 2004. **Practical Research and Planning**. 8th ed. New Jersey: Pearson Prentice Hall.

Bentley, I; A Alcock & D Murrian. 1985. **Responsive Environments: A Manual for Designers**. London: Architectural Press Ltd.

Richards, Lyn & Janice M Morse. 2007. **Read Me First Users Guide to Qualitative Methods**. 2nd ed. California: Sage Publications Inc.

Swierczek, F.W. 1992. **Strategies for business innovation: Evaluating the prospects of incubation in Thailand**. Technovation. p. 521-533

## list of references

---



Habraken, N.J. 1972. **Supports: An Alternative to Mass Housing**. England: Architectural Press.

Lynch, Kevin. 1960. **The Image of the City**. Cambridge: MIT Press & Harvard Press.

Birch, D. 1979. **The Job Creation Process**. MIT Programme in Neighbourhood and Regional Changes. Cambridge: MA.

Benson, Tedd. 1997. **Toward the Realization of the Sustainable Wood Architecture**. Research Forum of Wood Architecture, International Conference.

UK Business Incubation. 2007. **What is Business Incubation?**. United Kingdom: Mediascope. URL: <http://www.ukbi.co.uk> [April 2008]

Bensonwood Homes. 2003. **What is Open Building?**. Bensonwood Homes. URL: <http://www.bensonwood.com> [October 2008]

Phaidon. 2004. **World Atlas of Contemporary World Architecture**. London: Phaidon Press Limited

GA Document. 2008. **100**. Japan: ADA Edita.

GA Document. 2008. **101**. Japan: ADA Edita.

Phaidon. 2005. **10 x 10: 10 Critics, 100 Architects**. London: Phaidon Press Limited

GA Document. 2008. **99**. Japan: ADA Edita.

## list of references

---

S  
-  
S  
E  
H  
+  
(  
f  
O  
F  
P  
(  
H  
C  
[  
A  
M

"I can do all things through Christ who strengthens me."  
Philippians 4:13

To Jesus Christ God Almighty:

All the honor to You my Lord and Savior, Jesus Christ. Lord Jesus you are my intelligence, my creativity, my hope and my strength. Where I didn't make the requirements and was not accepted to the university, You were my requirement and gave me acceptance.

To my family:

Thank you Mom! It is as a result of your continuous prayers, inspiration and motivation that I am making a success of my life. Thank you Dad and Werner for your continuous prayers and support throughout the years.

To my friends:

Thank you to each one of you who has prayed and supported me even if it was just a word of encouragement.

To Mr. G. Young and Dr. P. Vosloo:

Thank you for the guidance and assistance throughout my masters year.

acknowledgements

---

S  
I  
S  
E  
H  
+  
)  
+  
O  
F  
(  
P  
C  
H  
(  
P  
L  
O  
F  
M  
A  
R  
C  
H