

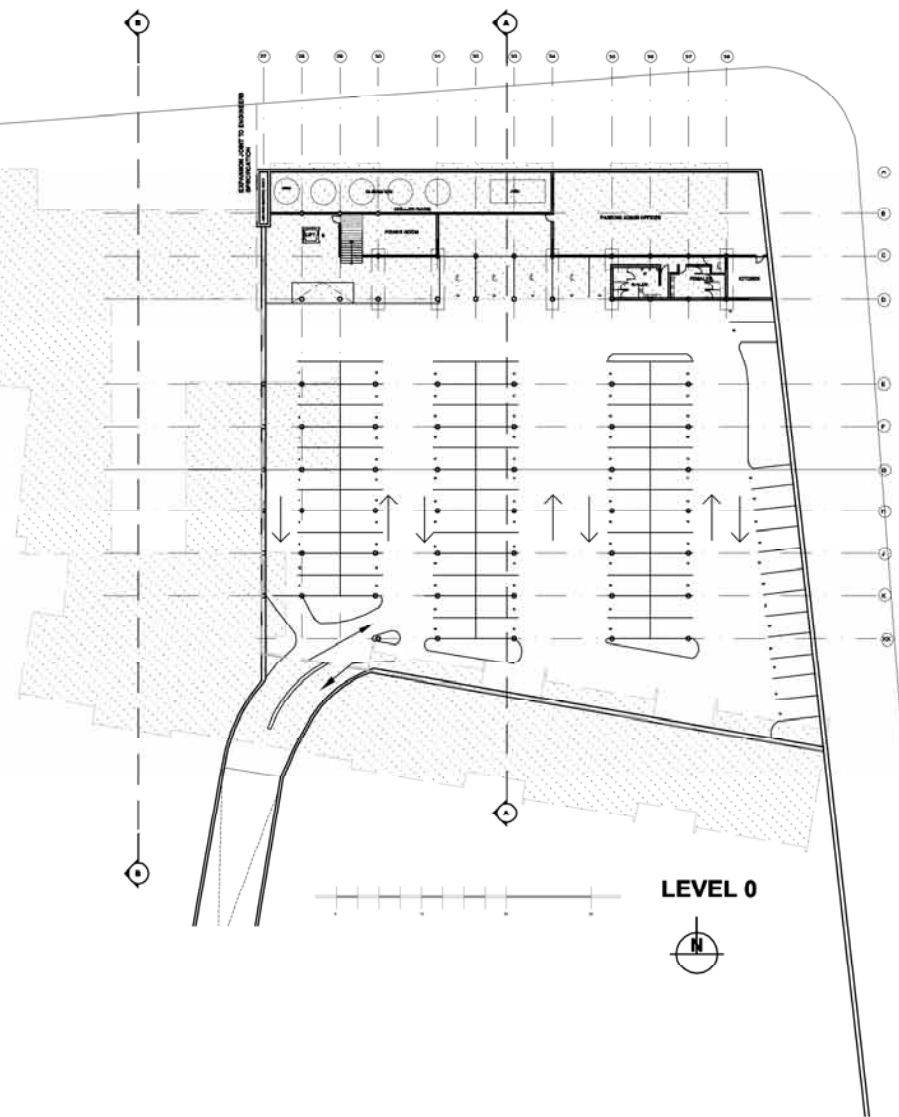
Parking Requirements

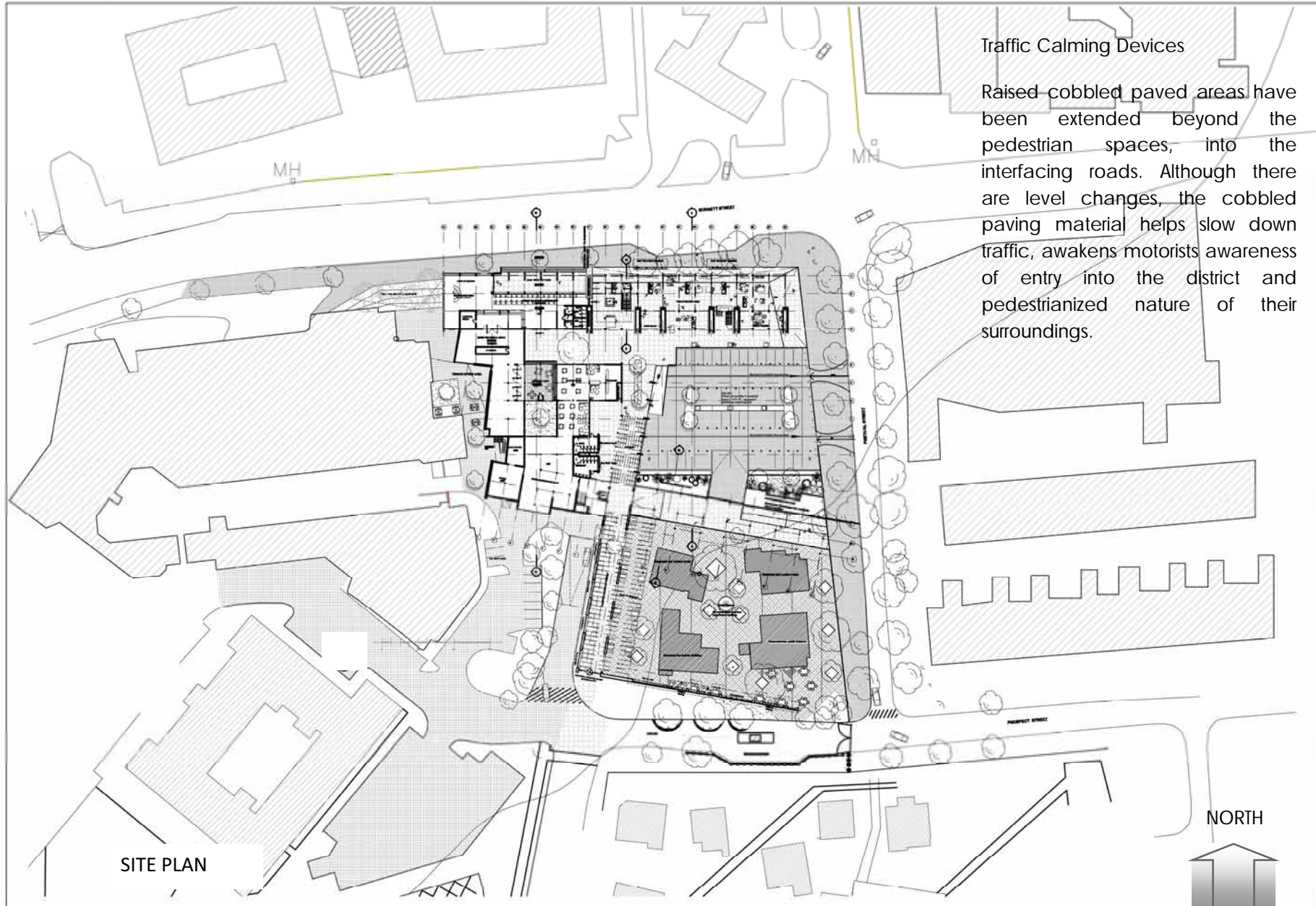
The required number to support functions, has not as yet reached.

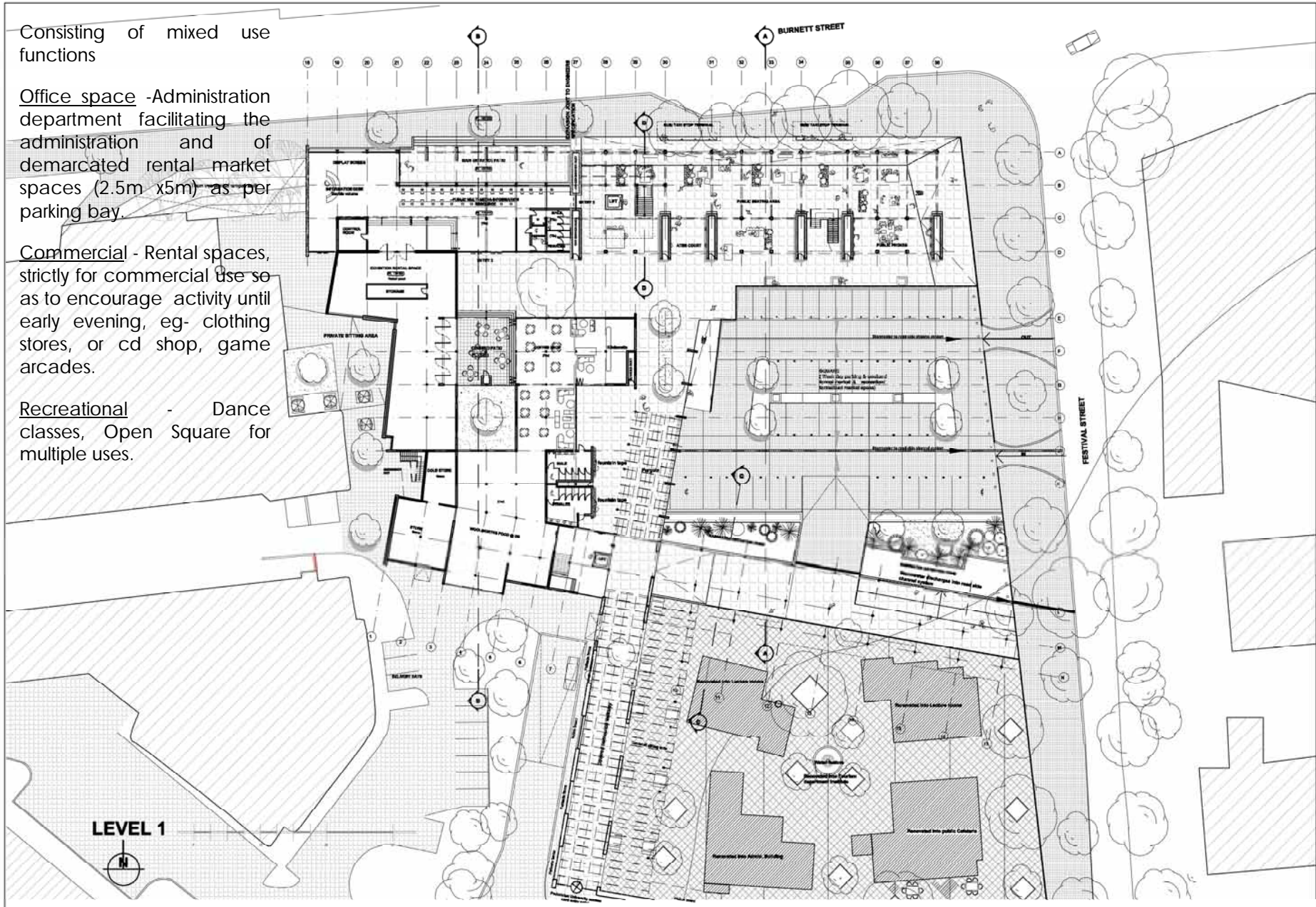
A provision of 145 parking bays has been made. Currently the student parking lot provides for 160 cars, there will be loss of student parking, considering that the facility will occupy the ground level parking. A second basement level must be considered.

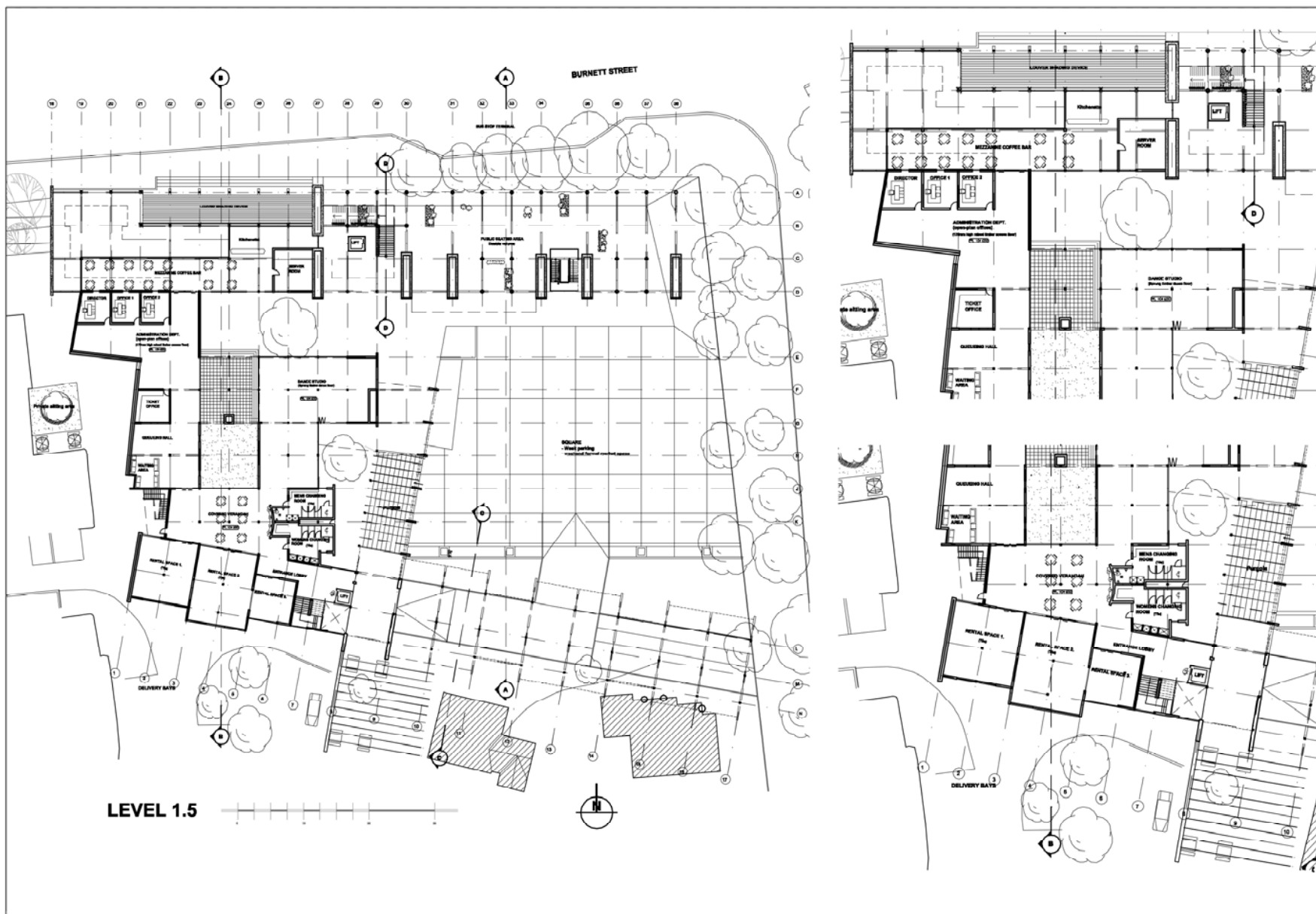
External Traffic Considerations

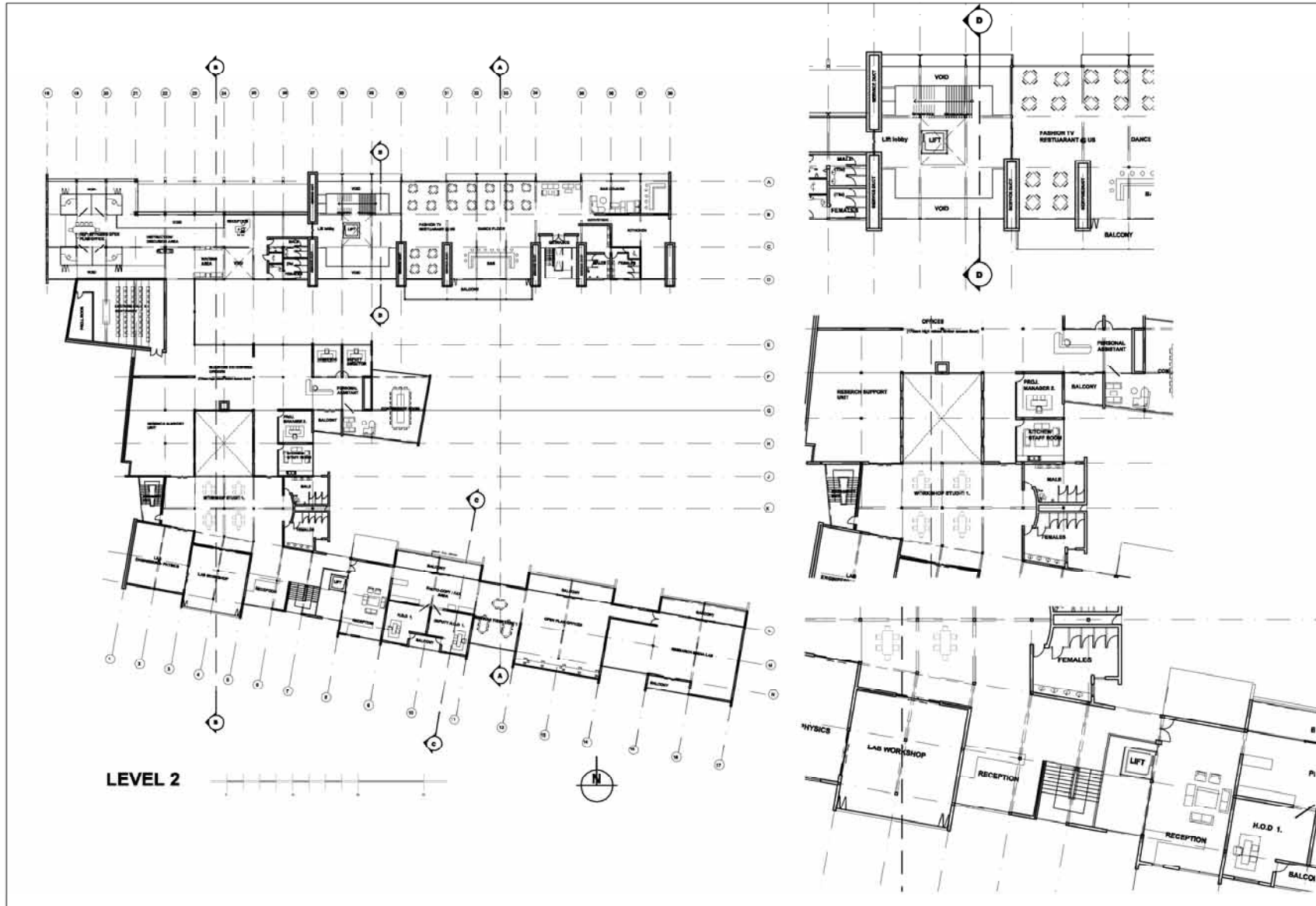
In order to not increase the congestion existing on Burnett Street during peak hours. No new vehicular entry points have been incorporated. The existing Vehicular entrance point off festival and corner festival and Prospect Street will be utilized.

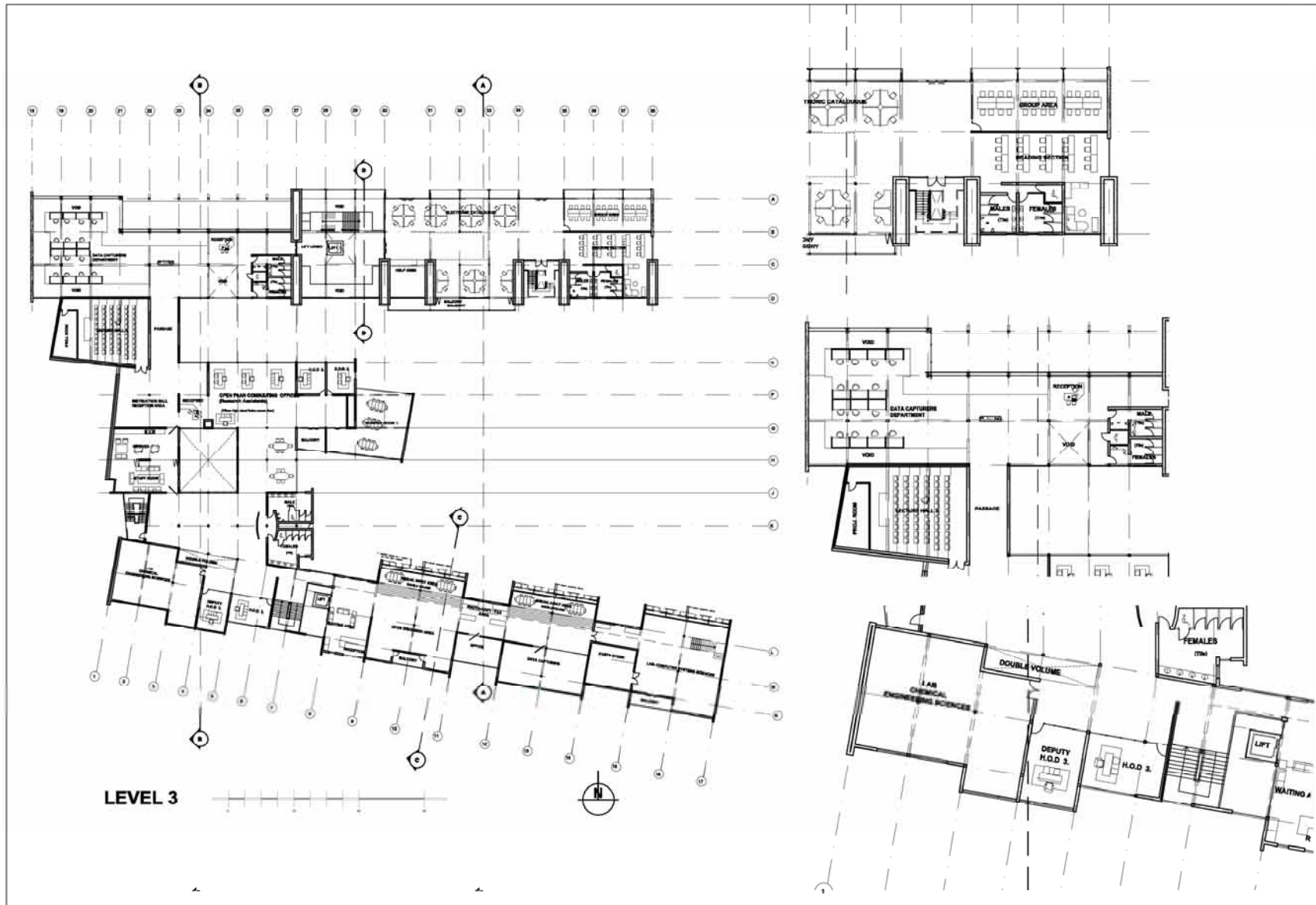


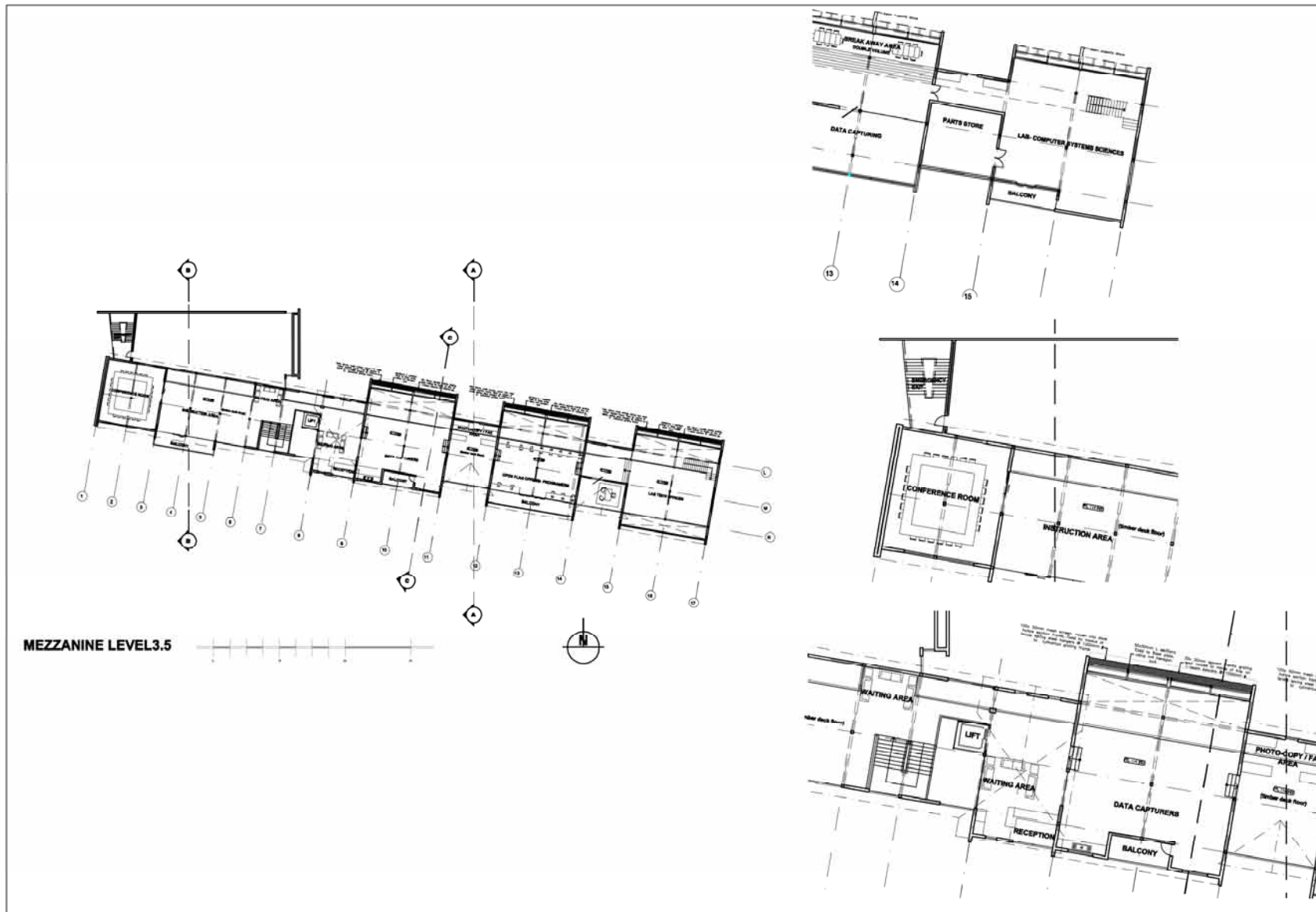


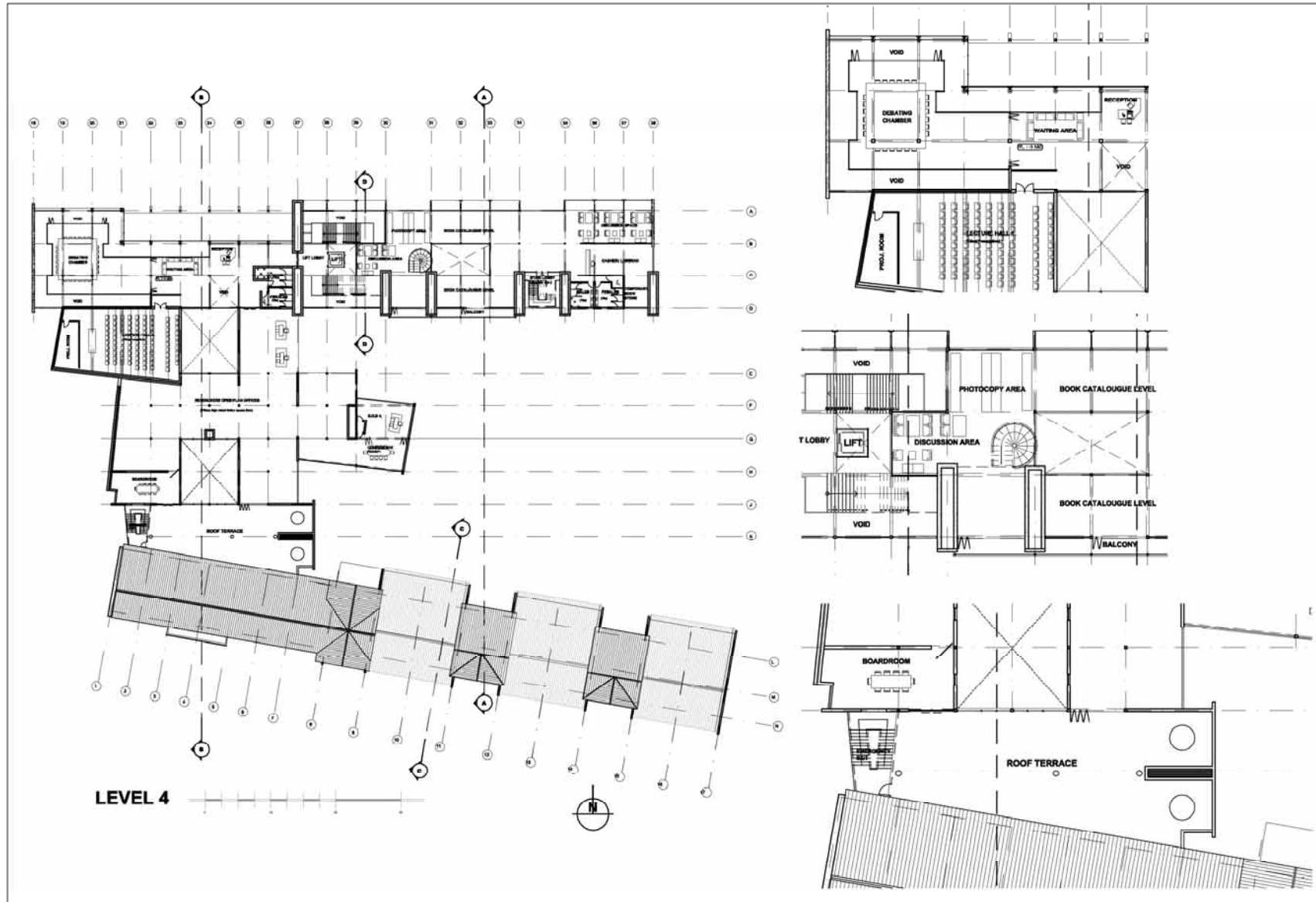


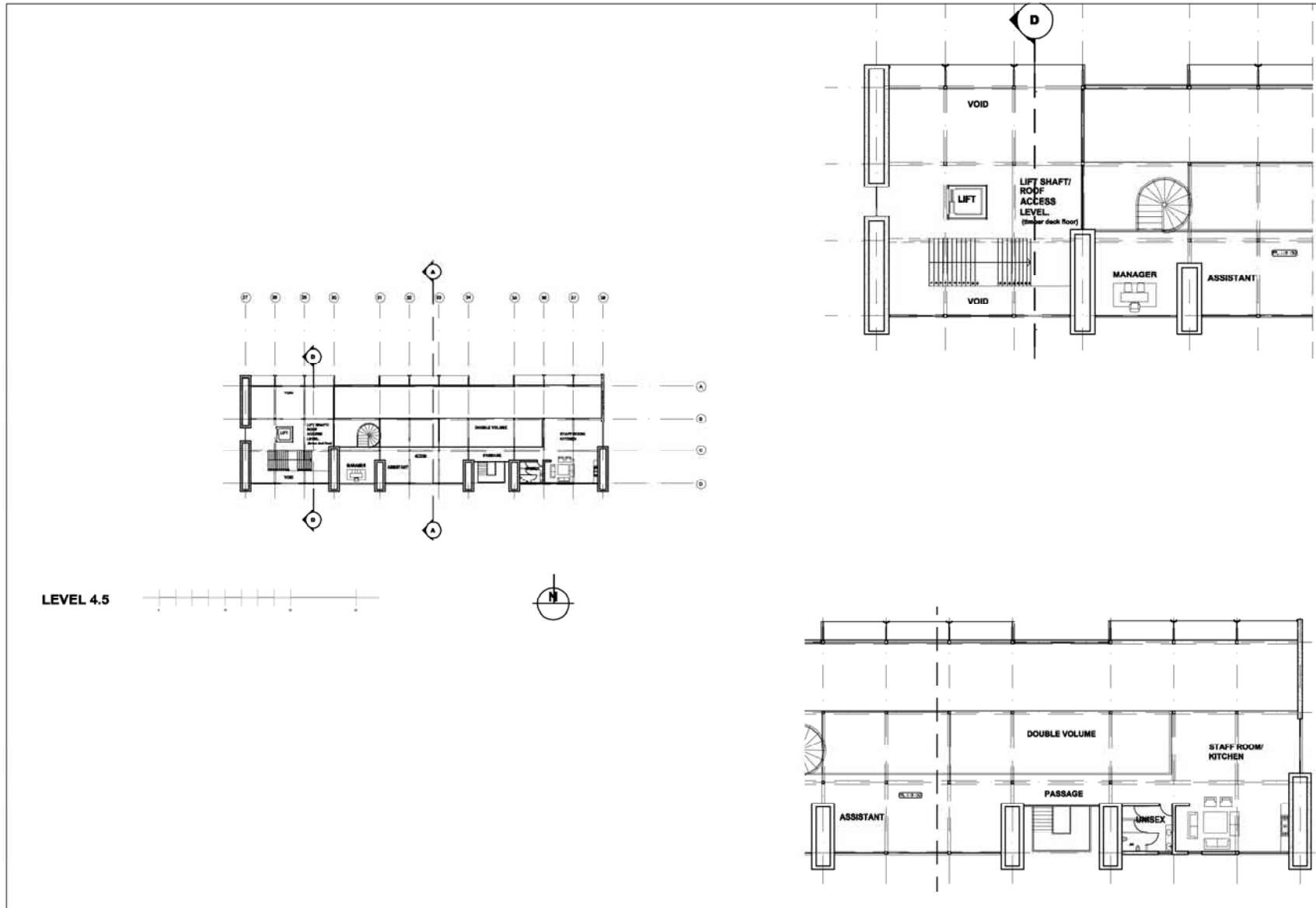


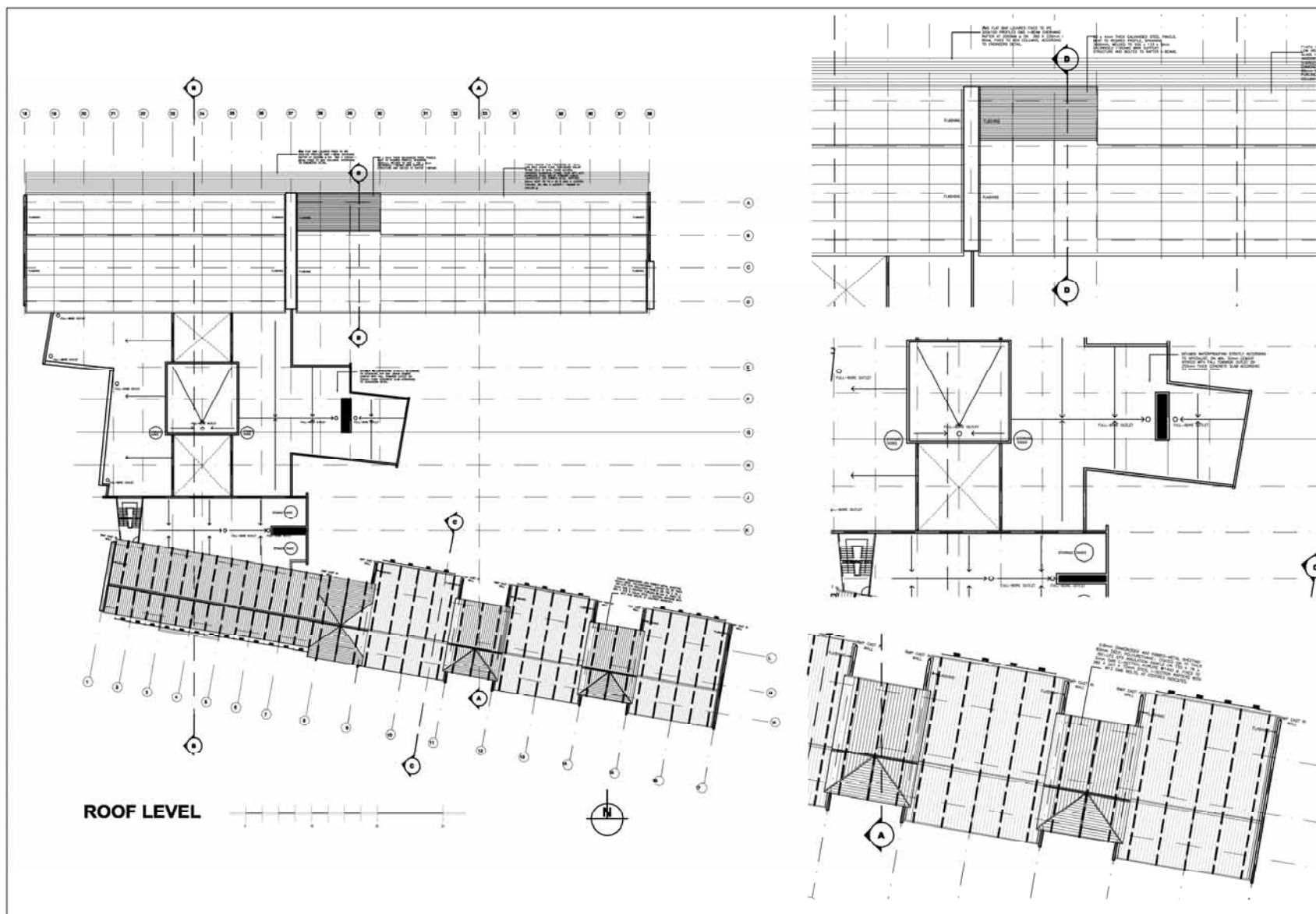






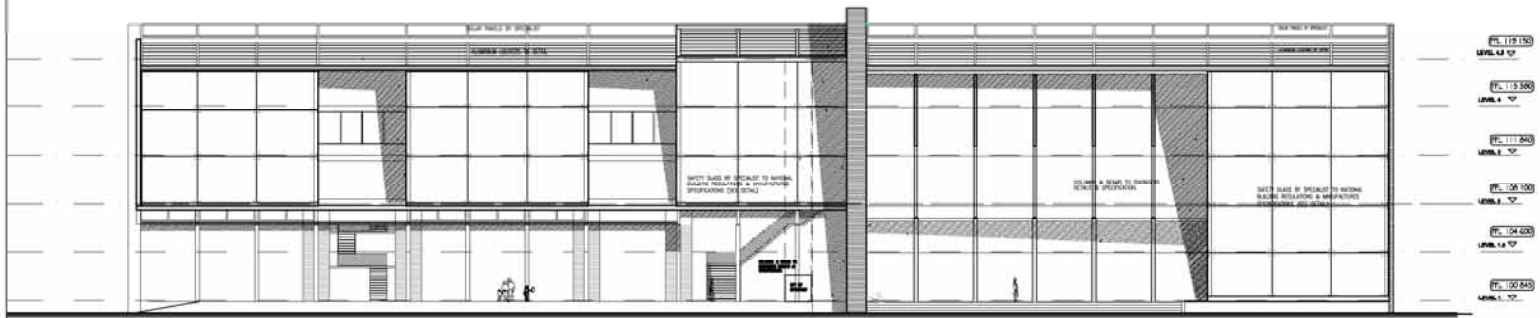




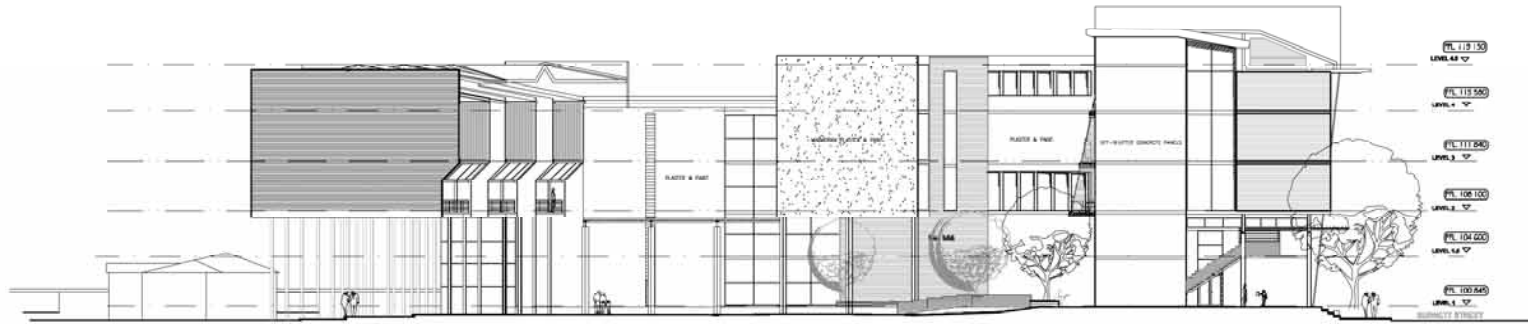




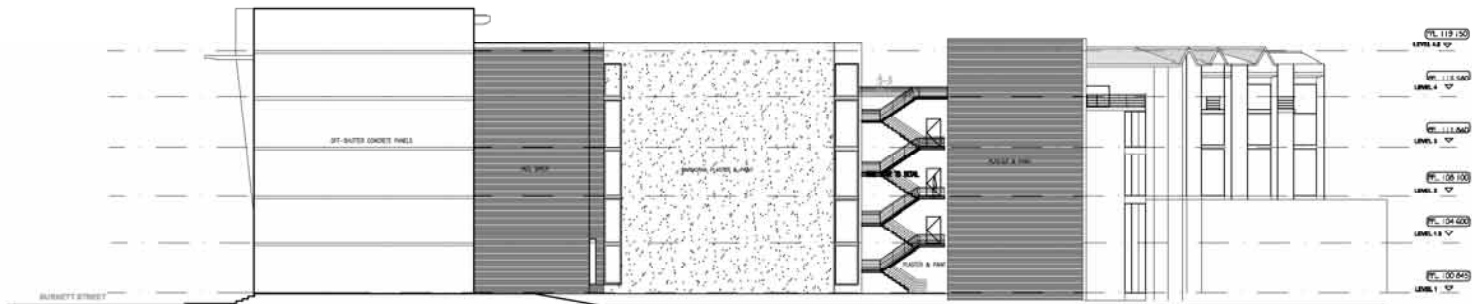
SOUTH ELEVATION



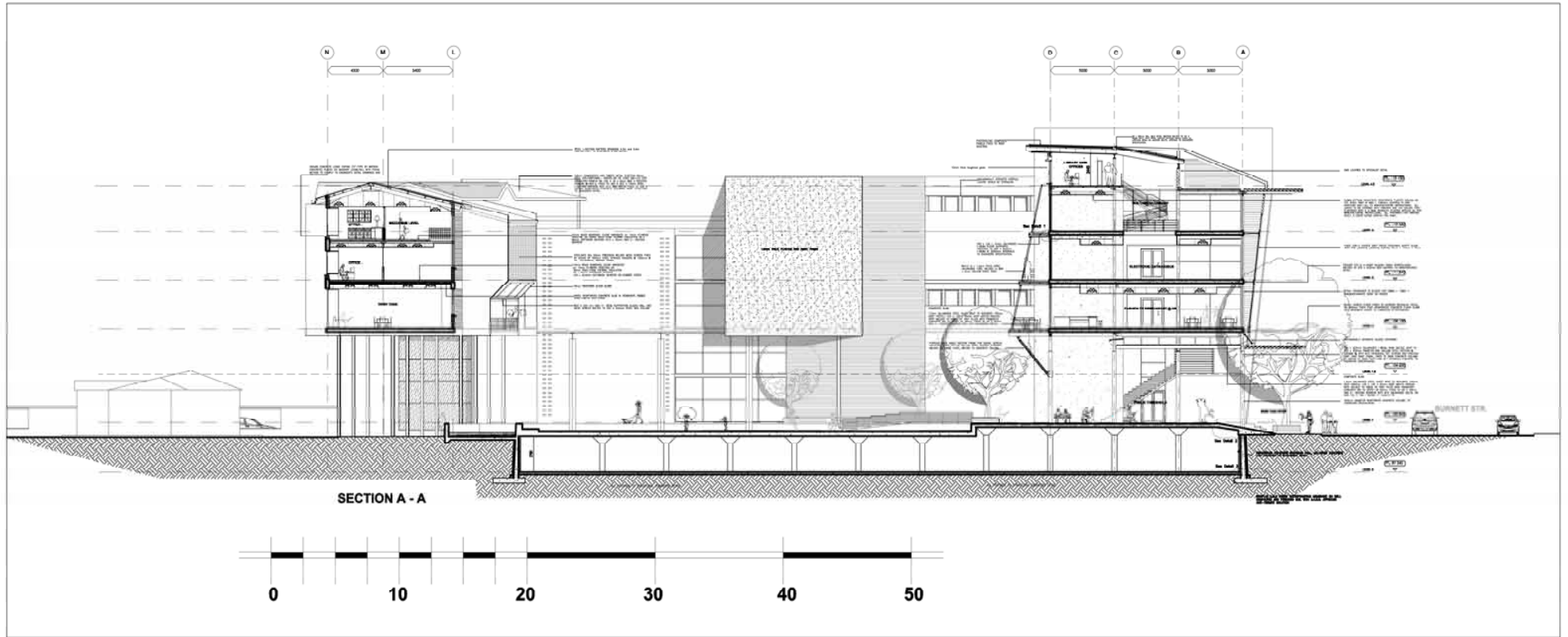
NORTH ELEVATION

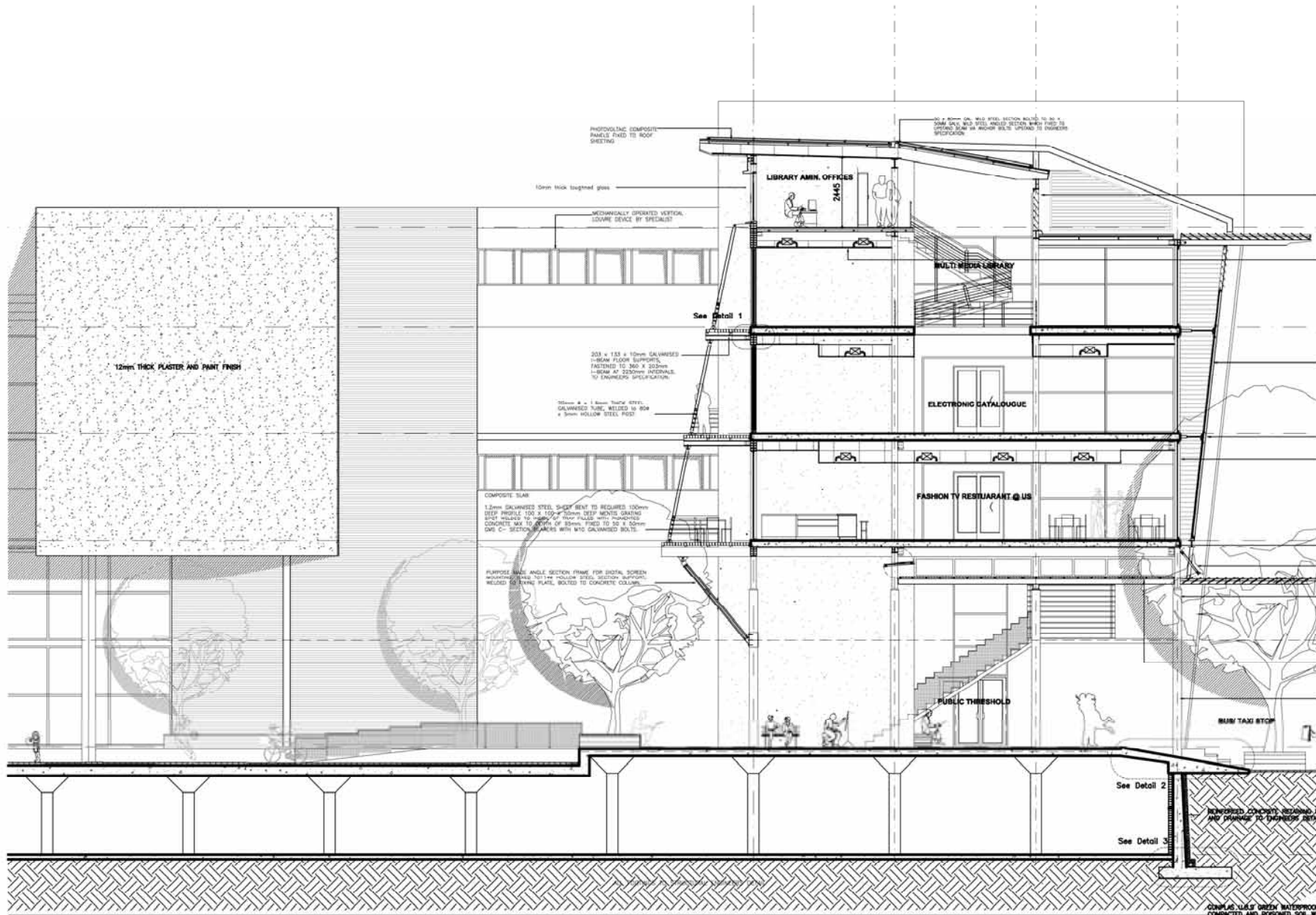


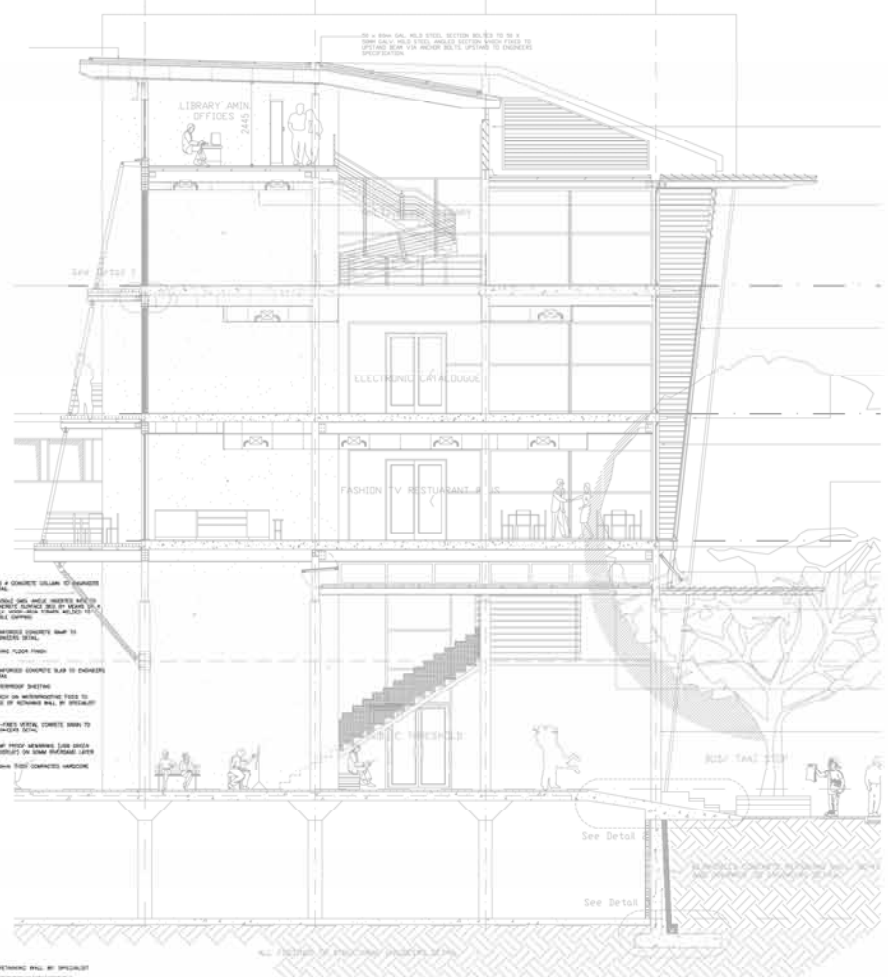
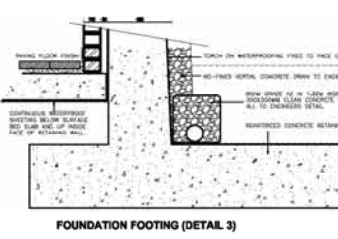
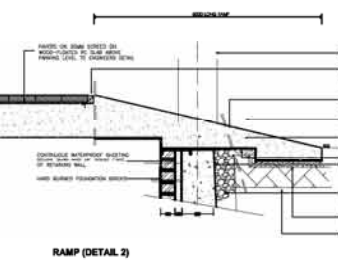
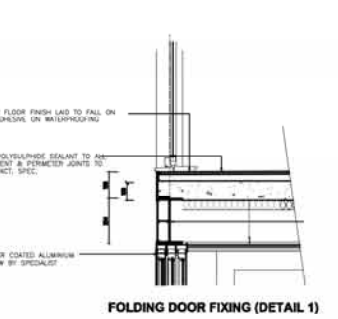
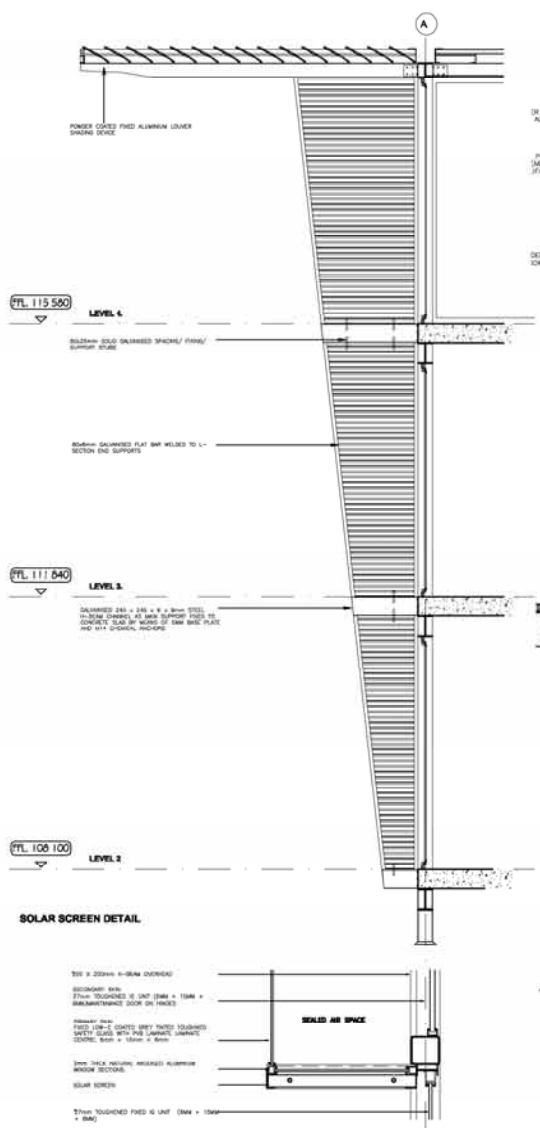
EAST ELEVATIONS

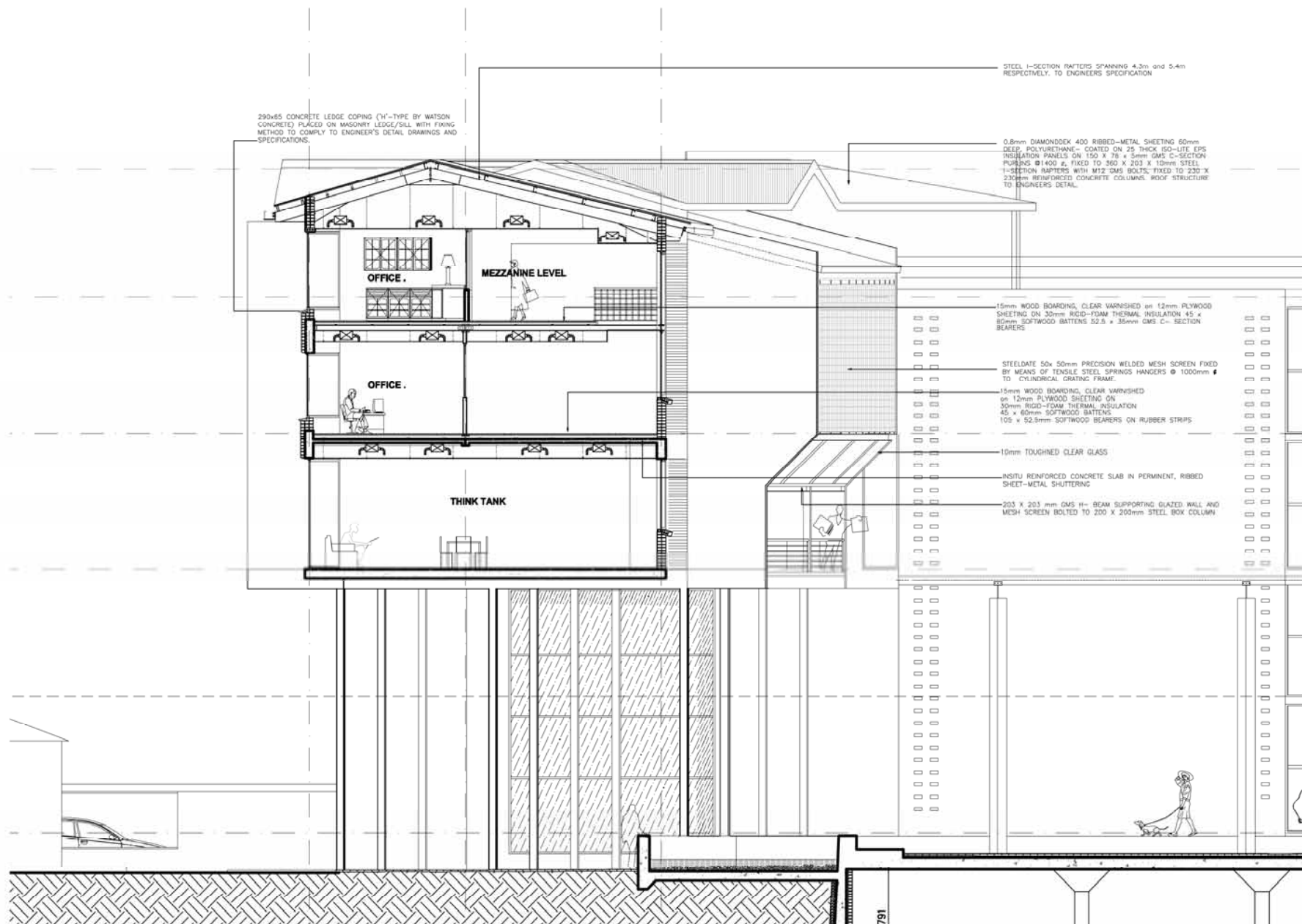


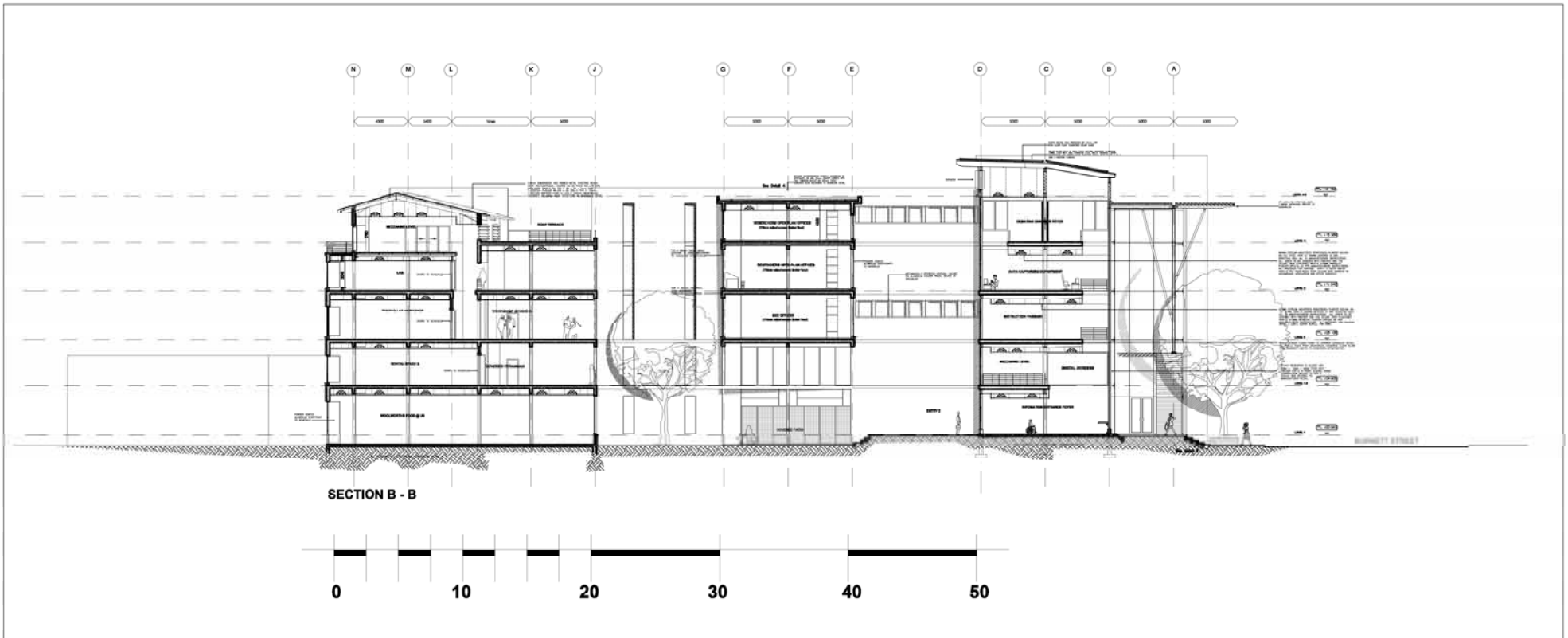
WEST ELEVATIONS

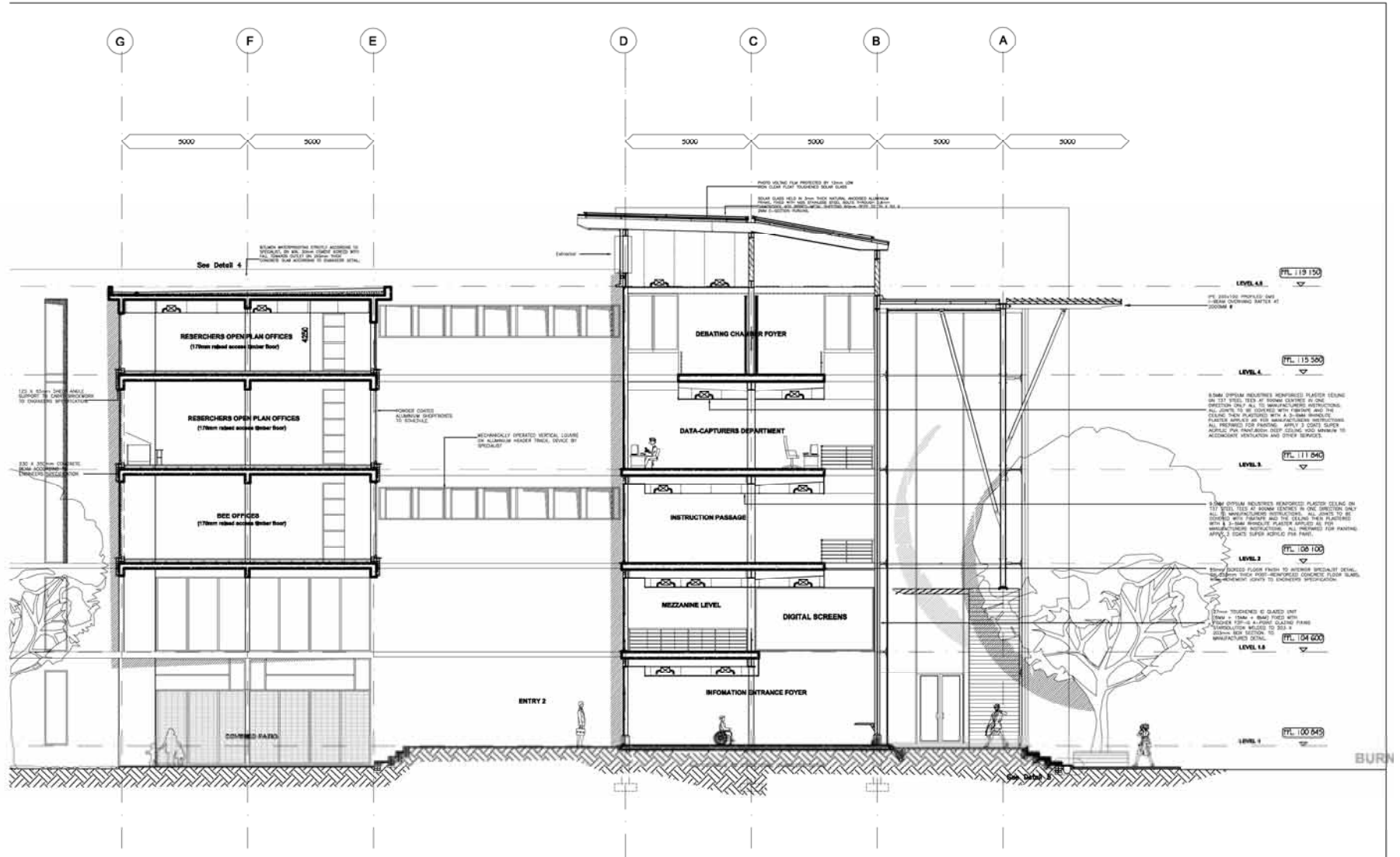


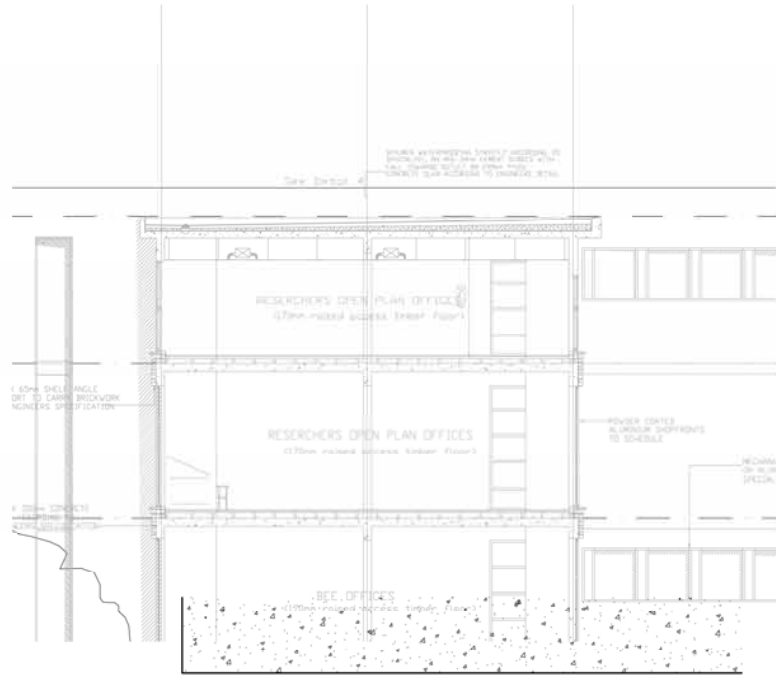




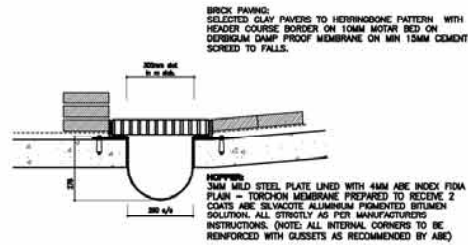




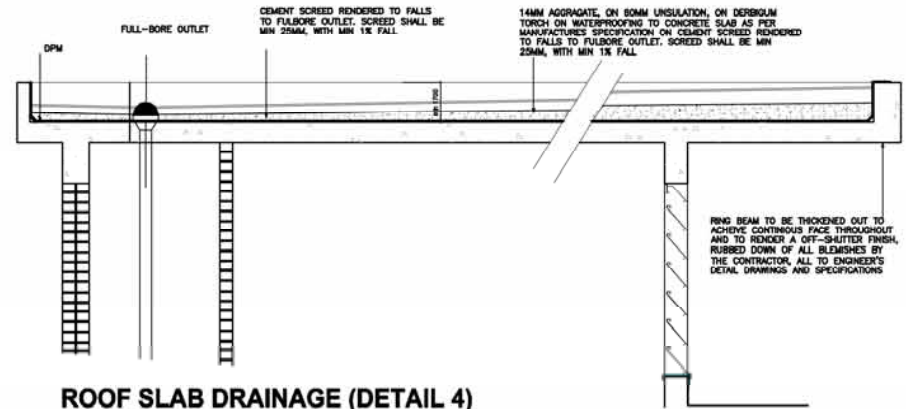




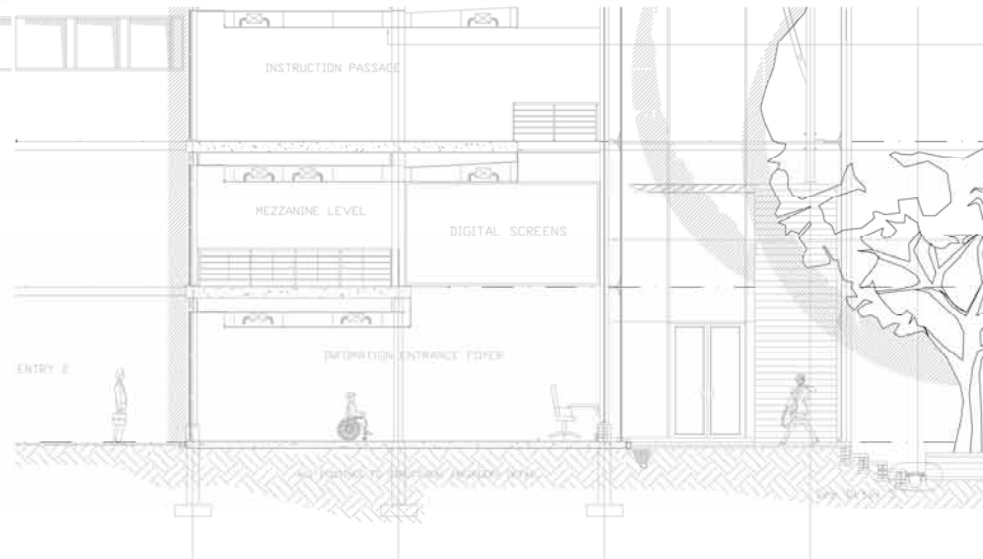
FOUNDATION FOOTING (DETAIL 3)
Scale 1:10

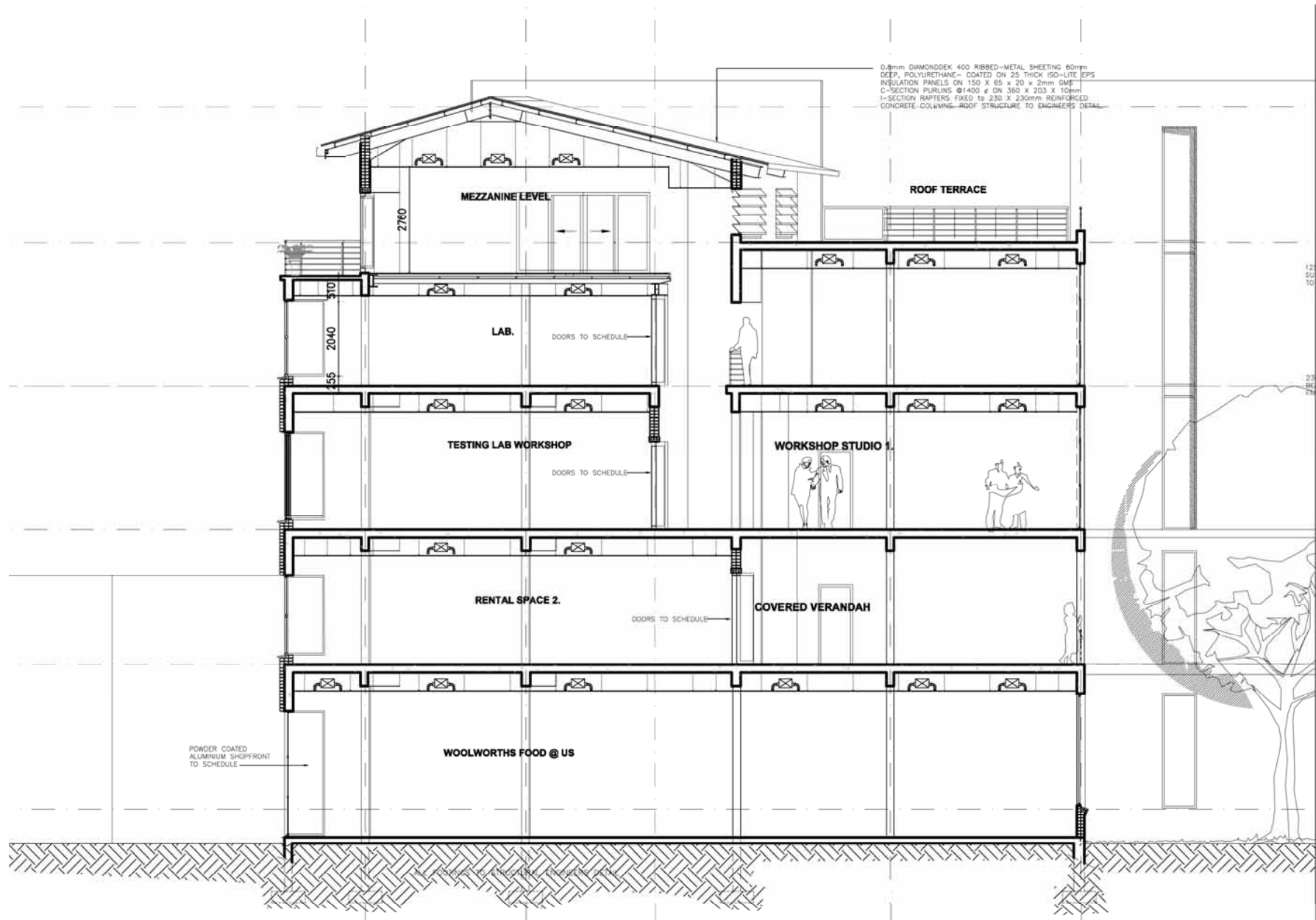


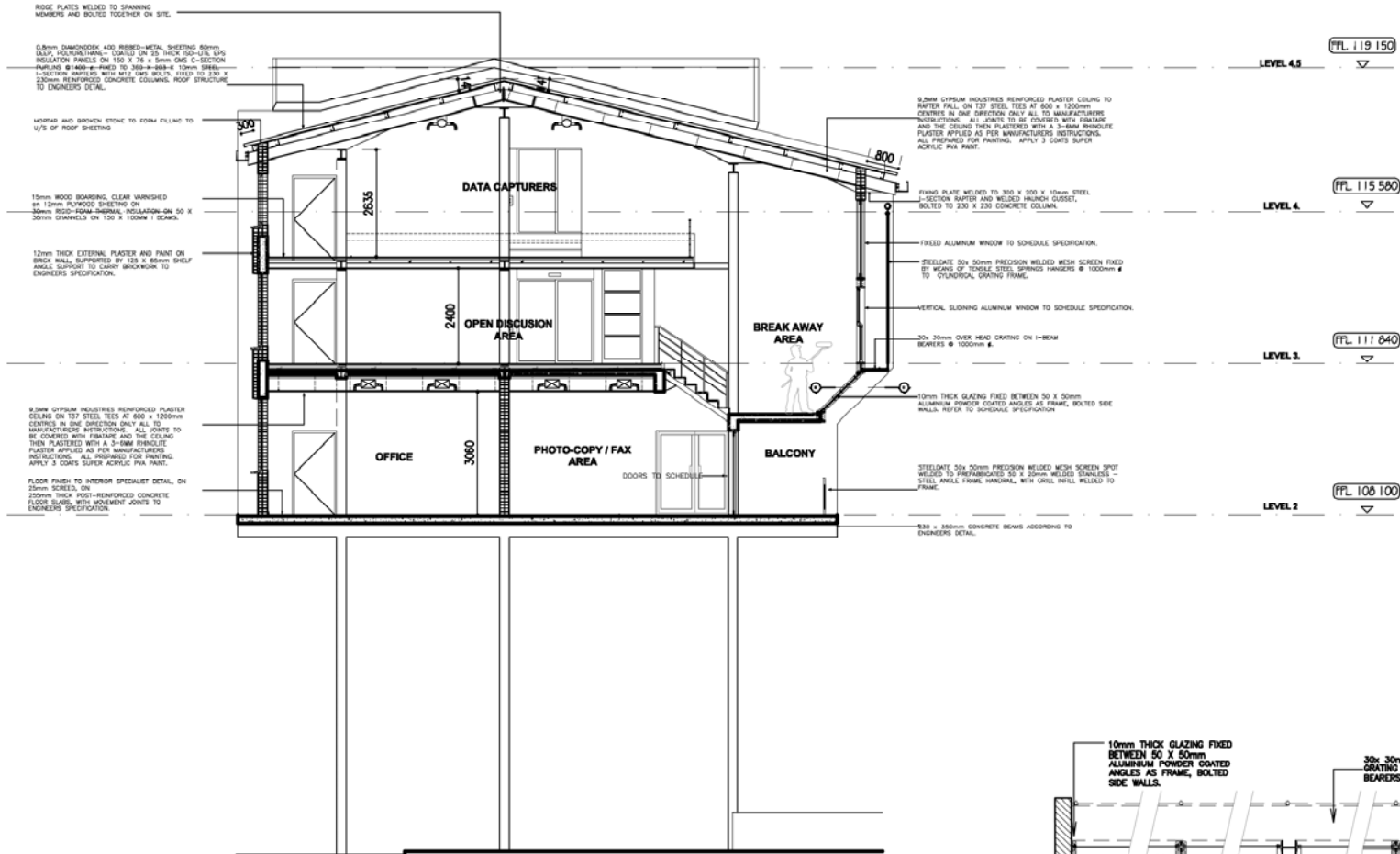
STORM WATER DRAIN (DETAIL 5)
Scale 1:10



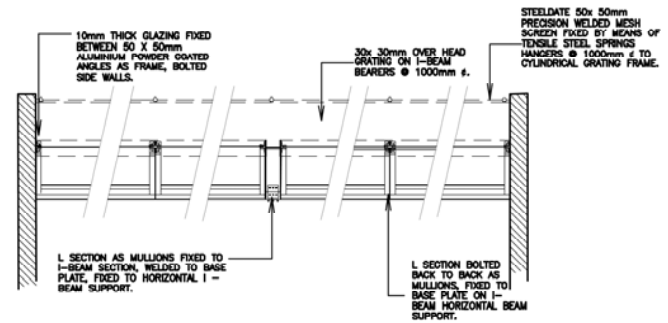
ROOF SLAB DRAINAGE (DETAIL 4)
Scale 1:20



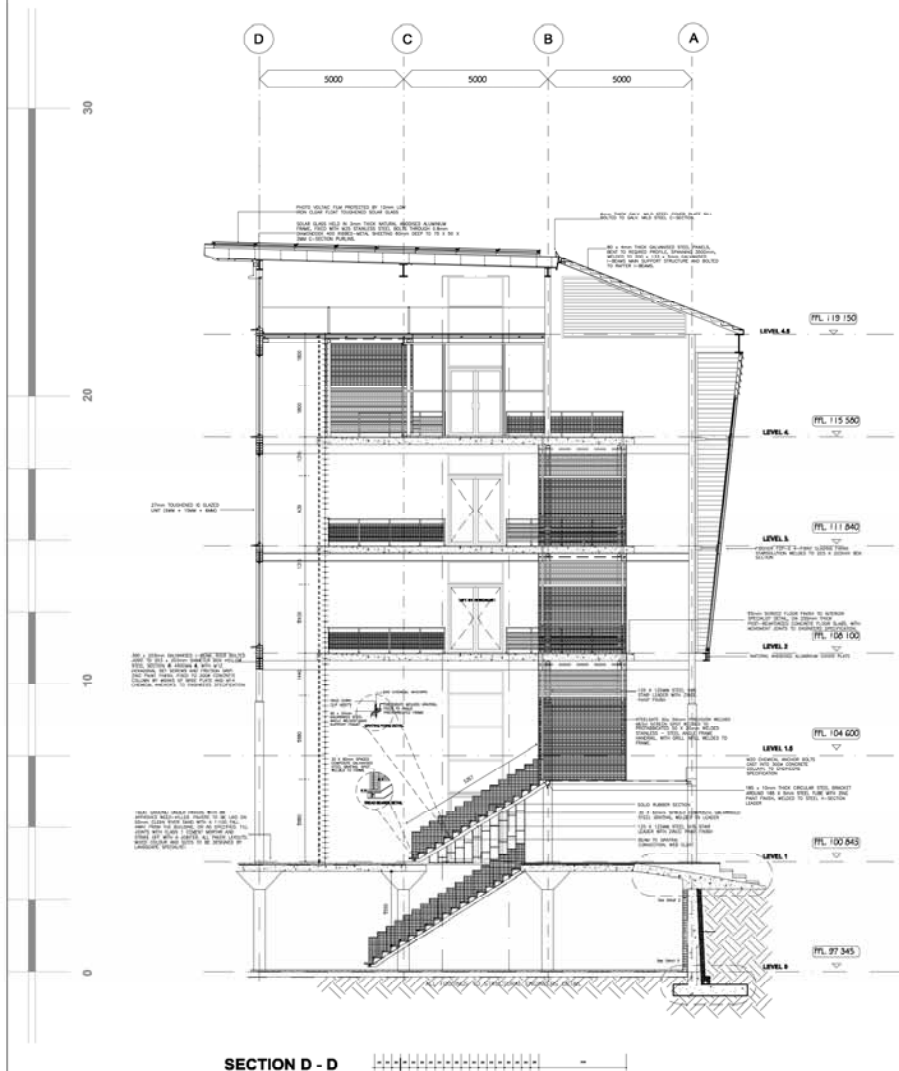
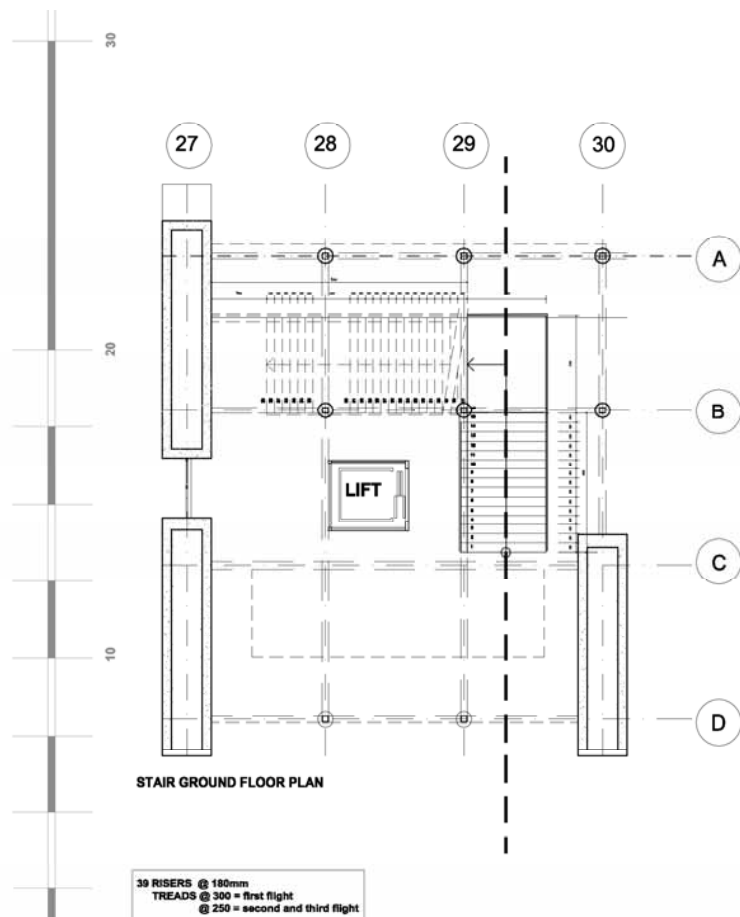


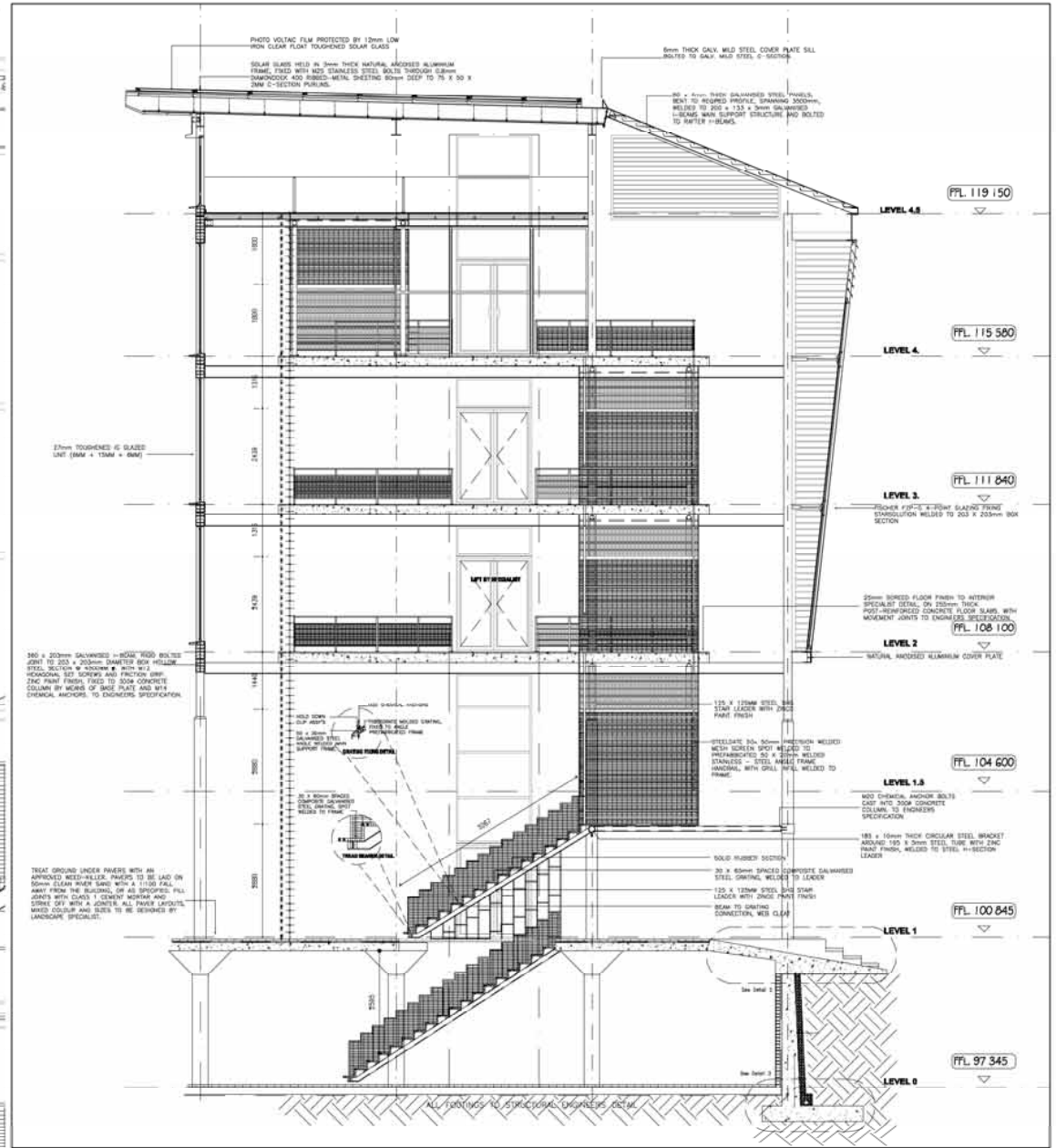
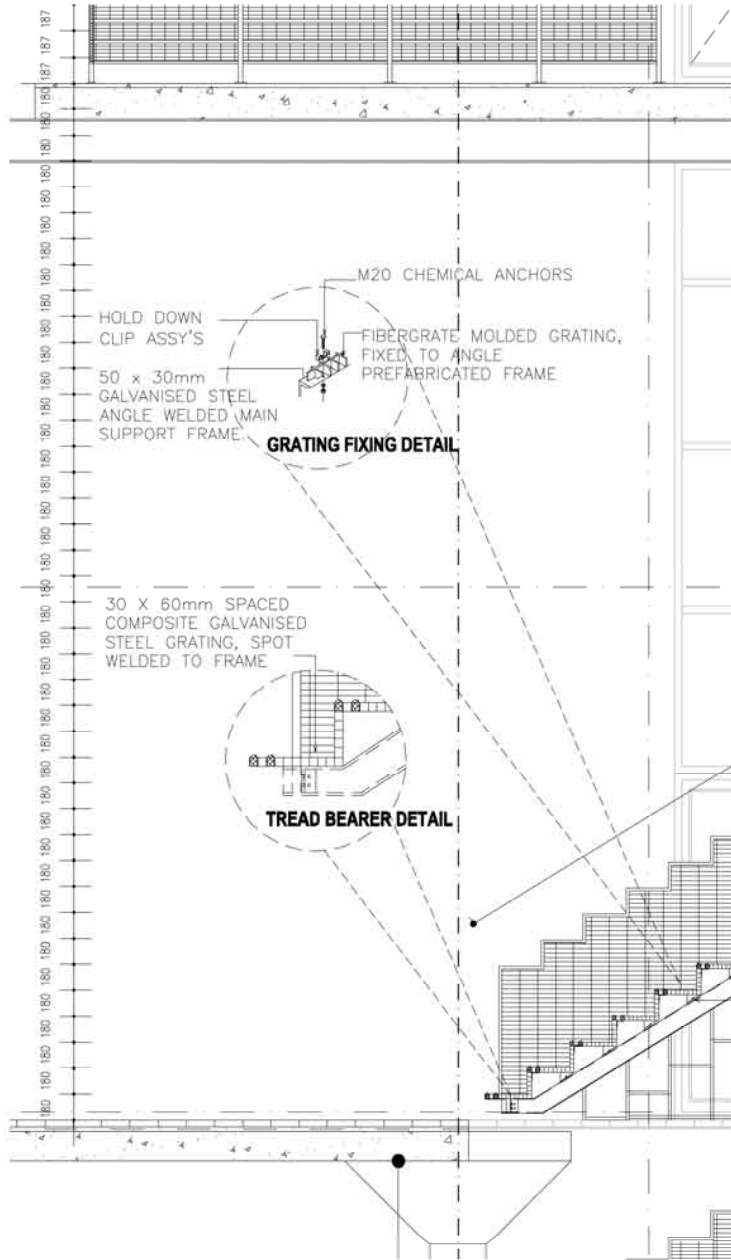


Section C - C



Section E - E





List of sources

- Habraken, N.J.. 2000. Teicher, J. (Editor). The Structure of the Ordinary: Form and Control in the Built Environment. MIT press: Massachusetts.
- Rowe, C. & Slutzky, R. 1968. Perspeck (Vol 8) Yale School of Architecture. Transparency: literal and phenomenal. pp 45-54.
- Greef, A. C. 2006. Interactive Centre, Pretoria, University of Pretoria.
- Christopher. A. 1968. "A City is not a Tree". In:; Ockman, J. ed. 1993. Architecture Culture. A documentary Anthology Columbia Books of Architecture and Rizzoli: New York. pp. 379-388
- Christopher. A. 1977. A Pattern language: Towns, Buildings, Construction. Oxford University Press: USA.
- Christopher. A. 2003. The Process of Creating Life: The Nature of Order, Book 2: An Essay on the art of building and the nature of the Universe. Centre for Environmental Structure: Berkley.
- Salingaros., N.A. 1998. "Connecting the Fractal City." Department of Applied Mathematics, University of Texas at San Antonio. Journal of Urban Design, (Vol 3), pages 53-71. © Taylor & Francis Limited. An earlier version of this paper was published electronically in 1997 by Resource for Urban Design Information (RUDI). Finnish translation published by Tampere University of Technology, Institute of Urban Planning publication No. 33 (2000).
- Leon, K. 1998. Building Heights and Critical Problems of Plot-Ratios. Two sections in Architecture: Choice or Fate. Andreas Papadakis Publisher: Windsor, England. pp 156-161.
- Canter, D., Krampen, M. & Stea D. (Eds). 1988 Ethnoscapes: Current Challenges in Environmental Social Sciences- Environmental Perspectives. Avebury: Brookfield, USA.
- Gibson, J.J. 1979. The ecological approach to visual perception. Houghton-Mifflin: Boston.
- Katz, P. 1994. The New Urbanism: Toward an Architecture of Community. New York San Francisco Washington, 1994, Library of Congress- in- Publish Data.
- Broadbent, Bunt & Llorens (Editors). Meaning and Behaviour in the Built, Ltd. Scotland, 1980, Environment. John Wiley & sons.
- Rapoport, A. 1982. The Meaning of the Built Environment: A Non-verbal Communication approach. Sage Publications; Beverly Hills.
- Foster, Rogers, Stirling. 1986 New Direction in British Architecture. Thames and Hudson: Great Britain.
- Graves, B. 1998B. In: Homi K. Bhabha. (eds). The liminal negotiation of cultural difference. <http://www.stg.brown.edu/projects.../popldiscourse/bhabha/bhabha2.html> Last visited 10 August, 1998.
- Sutherland, M 2002. "Urban Continuity School for Motion Picture and performance arts." March thesis.
- National Building Regulations.
- www.clearglass.com.au/.../TH2204-medium_init.jpg
- James, G. Glass handbook - www.gjames.com.au
- http://hzyuanda.en.alibaba.com/product/50064510/50291998/Chemical_Anchors/chemical_anchor.html

- Chiller room information -
www.emsd.gov.hk/emsd/eng_source/wnew/new_hqs.htm
- Marang Consortium Technical proposal- GOVERNMENT OF THE
REPUBLIC OF BOTSWANA MINISTRY OF WORKS AND TRANSPORT (MWT)
- Steel decking info - <http://www.rlsd.com/>
- <http://www.rsh-p.com/work>. Richard Rogers.
- <http://www.nyu.edu/gsas/dept/philo/courses/concepts/martin.html> -
The Transparency of Experience
- <http://www.universityworldnews.com>.
SOUTH AFRICA: University`s set priorities for research
Writer: Karen Macgregor
November 2007