

11

# REFERENCES



## References

### Books:

1. DOXIADIS, C.A. 1972. *Architectural Space in Ancient Greece*. Translated by Jaqueline Tyrwitt. Cambridge, London, Massachusetts. MIT Press.
2. KENT, S. 1990. *Domestic Architecture and the use of Space*. Cambridge, London. Cambridge University Press.
3. HILLIER, B. 1996. *Space is the machine: A configurational theory of architecture*. Cambridge University Press.
4. AD DESTINATUM 1960 – Gedenkboek van die Universiteit van Pretoria. Johannesburg. Voortrekkerpers.
5. DEWAR, D. and UYTENBOGAARDT, R. 1991. *South African cities: A manifesto for change*. Cape Town. Mills Litho (Pty) Ltd.
6. PEARSON, M and RICHARDS, C. 1994. *Architecture and Order: Approaches to Social Space*. London. TJ Press.
7. CHILDE, V. 1956. *Society and Knowledge*. Westport, USA. Greenwood Press.
8. VERGES, M. 2007. *Light in architecture*. New York. Tectum Publications.
9. VAN BEBBER, B, VAN DYK, W, CARROL, L, BOER, L. 2008. *Boogertman and Partners: Past Current Future*. Johannesburg. 4 Images (PTY) Ltd.
10. CHAPMAN, T. 2005. *Architecture 05: The guide to the RIBA awards*. London. Merrel Publishers.
11. PAPANEK, V. 1995. *Green Imperative*. Thomas and Hudson. London
12. CHING, F. 1996. *Architecture: Form, Space and Order*. Van Nostrand Reinhold. New York.
13. CHING, F. 1996. *Building Construction Illustrated*. Van Nostrand Reinhold. New York.
14. NAPIER, A. 2000. *Enviro Friendly methods in small building design for South Africa*. Published by Author.
15. HEIDEGGER, M. 1996. *Building Dwelling Thinking: Martin Heidegger Basic Writings*. Edited by David Farrell Krell. London. Cambridge University Press.
16. ALEXANDER, C. 1964. *Notes on the Synthesis of Form*. Harvard University Press. Massachusetts.
17. WEGELIN, H W. 2006. *The craft of building: Volume 1*. Published by author.
18. WEGELIN, H W. 2006. *The craft of building: Volume 2*. Published by author.

### Articles:

1. STEPHENS, S. 2006. *Pedestrian bridges: Iconic connections*. Architectural Record. Volume 192/6. pp.247-270.
2. HART, S. 2004. *Architectural Technology: Architects discover the bridge*. Architectural Record. Volume 192/6. pp.279-286
3. BROOKES, A. 2002. *Design Review: Bridging diciplines*. Architectural Review. Volume 211/1261. pp.38-39

4. SLESSOR, C. 1996. *Light Curve: Timber connections*. Architectural Review. Volume 199/1189. pp54-61.
5. SLESSOR, C. 1998. *Singular suspension*. Architectural Review. Volume 203/1211. pp74-76.
6. TALARICO, W. *Crossing safely to the other side*. Architectural Review. Volume 188/3. pp149-160

### Internet References:

1. Architectural space. 2007. [http://en.wikipedia.org/wiki/space/In\\_Philosophy](http://en.wikipedia.org/wiki/space/In_Philosophy) (03-03-2008)
2. Space. 2008. <http://en.wikipedia.org/wiki/space> (03-03-2008)
3. Rentable studios. 2008. <http://www.aestudios.com> (31-03-2008)
4. Gallery exhibitions. 2008. <http://www.hangargalleries.com> (03-04-2008)
5. Correct art restoration. 2008. <http://www.santamonicaart.com> (28-02-2008)
6. Art storage. 2008. <http://reservevault.com> (26-08-2008)
7. Artist Proof Studio. 2008. <http://www.aps.co.za> (03-04-2008)
8. Art restoration. 2008. <http://www.artforum.au> (03-04-2008)
9. Gallery. 2008. <http://www.greatbuildings.com> (05-08-2008)
10. Traffic noise pollution. 2008. <http://www.highwaysagency.co.uk> (22-09-2008)
11. Noise calculator. 2008. <http://www.engineeringtoolbox> (04-06-2008)
12. Pedestrian bridges. 2008. <http://www.archrecord.com> (28-08-2008)
13. Zaha Hadid bridge pavillion. 2008. <http://www.designmag.co.uk> (22-09-2008)
14. Expanded metal. 2008. <http://www.gsdmaterials.com> (15-10-2008)
15. Fire Protection. 2008. <http://www.wormaldfire.co.uk> (30-09-2008)

### Interviews:

Prof. M Slabbert, 22-03-2008, Head of Department of Visual Arts, University of Pretoria, programmatic limitations of existing infrastructure.  
Consultation with C von Geysso, 15-09-2008, Structural engineer.

## List of illustrations

### 01\_introduction

background images (author's personal collection)

### 02\_building typology

background images, author's personal collection

Fig. 2.01\_Laser restoration device, [www.aestudios.com](http://www.aestudios.com) - 31-3-2008

Fig. 2.02\_Rentable galleries, [www.hangargalleries.com](http://www.hangargalleries.com), 03-04-2008

Fig. 2.03\_Painting storage units, [www.santamonicaart.com](http://www.santamonicaart.com), 28-02-2008

Fig. 2.04\_Artist studio, [www.hangargalleries.com](http://www.hangargalleries.com), 03-04-2008

Fig. 2.05\_Art storage units, [www.reservevault.com](http://www.reservevault.com), 26-08-2008

Fig. 2.06\_Artist proof studio, various student prints, [www.aps.co.za](http://www.aps.co.za), 03-04-2008

### 03\_precedent studies

background images, author's personal collection

Fig. 3.01-3.05\_UCT sport center, photographs by author

Fig. 3.06\_Carpenter center floor plan, Barker, A. Unpublished course notes 2006

Fig. 3.07-3.09\_Carpenter center images, [www.archrecord.com](http://www.archrecord.com), 28-08-2008

Fig. 3.10-3.13\_Houghton park pedestrian skyway, [www.archrecord.com](http://www.archrecord.com), 28-08-2008

Fig. 3.14-3.18\_Zaragoza bridge pavillion, [www.designmag.co.uk](http://www.designmag.co.uk)

Fig. 3.19-3.21\_Lewis Glucksman gallery Cork Ireland, [www.archrecord.com](http://www.archrecord.com), 28-08-2008

Fig. 3.22-3.23\_Lewis Glucksman gallery Cork Ireland, Guide to RIBA awards, 2005

Fig. 3.24-3.27\_Passerelle on the aureuse, [www.archrecord.com](http://www.archrecord.com), 30-09-2008

Fig. 3.28-3.30\_SANAA museum of contemporary art, New York, [www.gsd-materials.com](http://www.gsd-materials.com), 15-10-2008

### 04\_theoretical investigation

Fig. 4.01\_Senses, Lexus 2008 brochure

### 05\_accomodation schedule

accomodation schedule tables, by author

### 06\_context

Fig. 6.01\_Pretoria figure ground, authors personal collection

Fig. 6.02\_Built context diagram, by author

Fig. 6.03-6.11\_physical context, photographs by author

Fig. 6.12\_UP historical development diagram, UP archives, edited by author

Fig. 6.13\_Tukkielaan, photograph by author

Fig. 6.14-6.15\_Department of visual arts, photograph by author

Fig. 6.16\_Visual arts location diagram, by author

Fig. 6.17-6.19\_Aerial photographs of Boukunde building, UP archives

Fig. 6.20-6.21\_Boukunde, photographs by author

Fig. 6.22\_Boukunde location diagram, by author

Fig. 6.23\_Lynnwood Road, photograph by author

Fig. 6.24\_Areal photograph of Lynnwood Road, UP archives, edited by author

Fig. 6.25\_Lynnwood Road, photograph by author

Fig. 6.26\_Lynnwood Road location diagram, by author

Fig. 6.27\_Areal photograph of South campus, UP archives, edited by author

thor

Fig. 6.28\_South campus, photograph by author

Fig. 6.29\_Pedestrian crossing diagram, by author

Fig. 6.30\_Parking and pedestrian movement diagram, by author

Fig. 6.31\_Vehicle speed diagram, by author

Fig. 6.32\_Site access diagram, by author

Fig. 6.33\_Solar angle diagram, by author

Fig. 6.34\_Solar angle diagram, by author

Fig. 6.35\_Prevailing wind directions, by author

Table 6.01\_Temperature and precipitation, www.weathersa.co.za, 03-04-2008

Table 6.02\_Site data

## **07\_urban design development**

Fig. 7.01\_world at night, author's personal collection

Fig. 7.02-7.06\_Isovist diagrams, Hiller 1996

Fig. 7.07-7.08\_Urban design diagrams, by author

## **08\_design development**

Fig. 8.01-8.05\_Concept diagrams, by author

Fig. 8.06-8.08\_Spatial exploration diagrams, by author

Fig. 8.09\_Boukunde, photo by author

Fig. 8.10\_Formal response diagram, by author

Fig. 8.11\_diagrammatic ground floor plan, by author

Fig. 8.12-8.16\_Circulation diagrams, by author

Fig. 8.17-8.24\_Building massing diagrams, by author

Fig. 8.25\_Vegetation diagram, by author

Fig. 8.26\_Cynodon dactylon, www.plantzafrica.co.za, 30-09-2008

Fig. 8.27-8.28\_Vegetation diagram, by author

Fig. 8.29.8.31\_Erythrina lysistemon, www.plantzafrica.co.za, 30-09-2008

Fig. 8.32-8.34\_Proximity diagrams

Fig. 8.35-8.38\_Perspective views of proposed building

## **09\_technical investigation**

Fig. 9.01-9.04\_Structural models, by author

Fig. 9.05\_Double skin facade, by author

Fig. 9.06\_Expanded aluminium, www.gsdmaterials.com, 15-10-2008

Fig. 9.07\_Fire route diagrams, by author

Table 9.08-9.09\_Occupancy tables, reproduction SABS 0400, 1990

Fig. 9.10\_Fire protection devices, www.wormaldfire.co.uk, 30-09-2008

Fig. 9.11\_Inert gas nozzle, www.wormaldfire.co.uk, 30-09-2008

Fig. 9.12\_Inert gas storage units, www.wormaldfire.co.uk, 30-09-2008

Fig. 9.13\_Acoustic absorbers, www.engineeringtoolbox.com, 04-06-2008

Fig. 9.14-9.15\_Acoustic levels diagrams, reproduction by author, www.engineeringtoolbox.com

Fig. 9.16\_Noise pollution diagram, by author

Fig. 9.17\_Stormwater tables, reproduction SABS 0400, 1990

Table 9.18-9.19\_Stormwater calculations, by author

Fig. 9.20-9.22\_Ventilation diagrams, by author

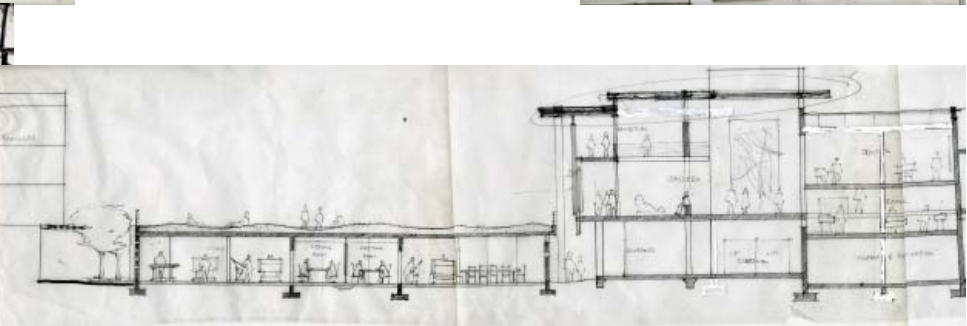
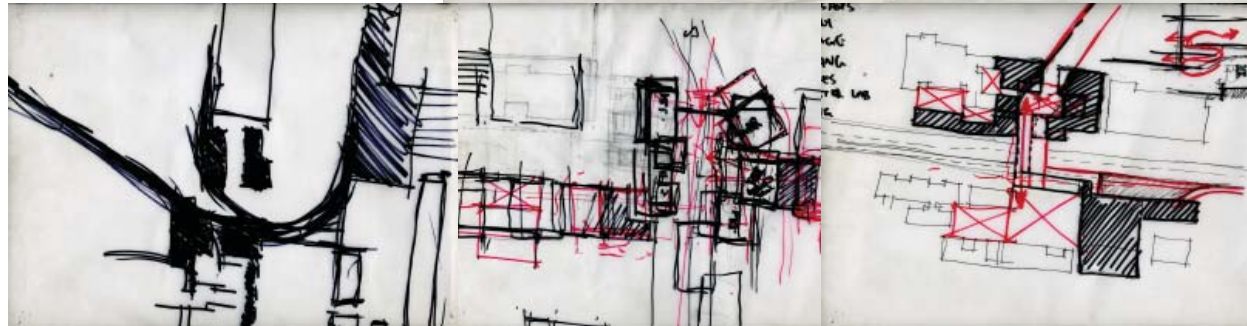
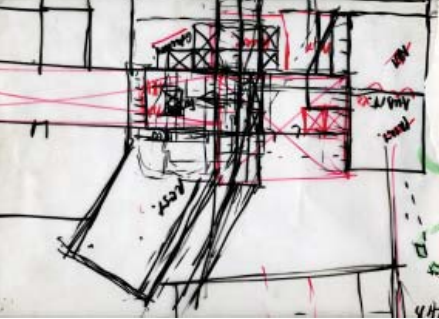
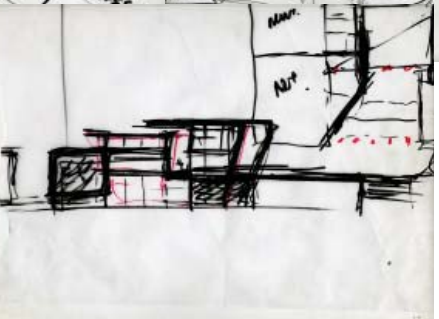
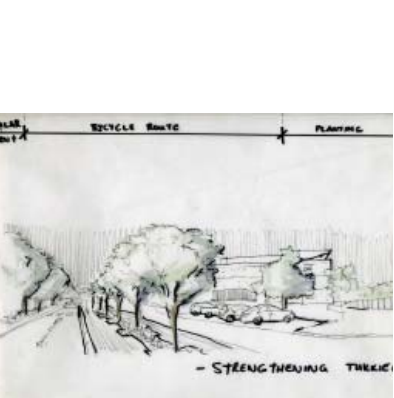
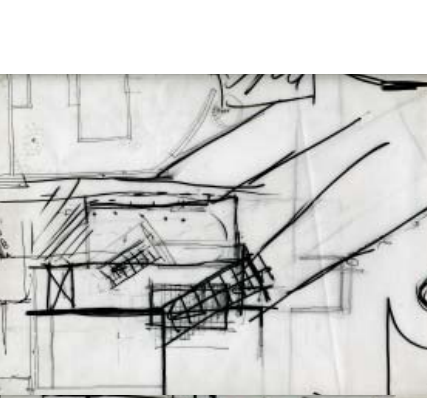
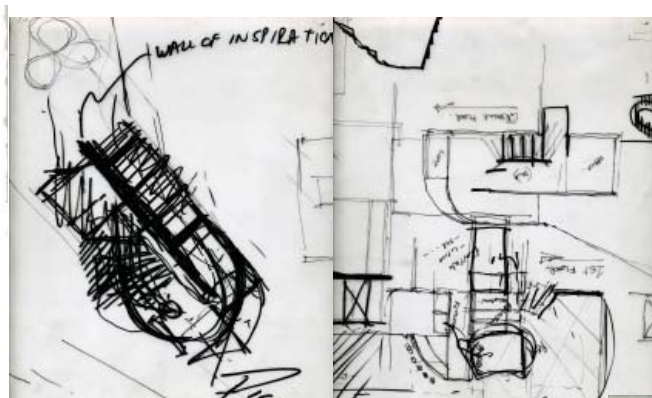
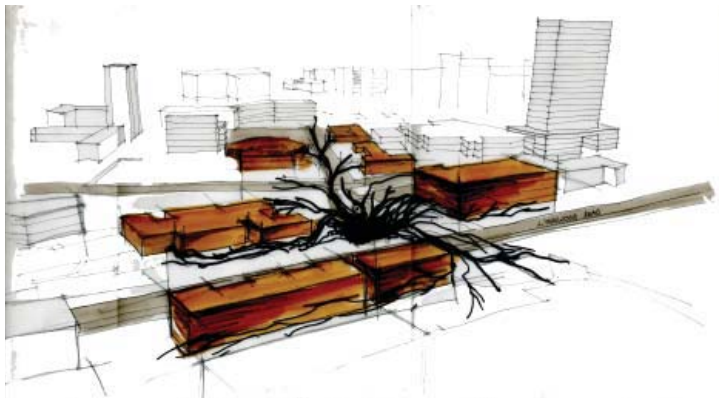
12

ADDENDA

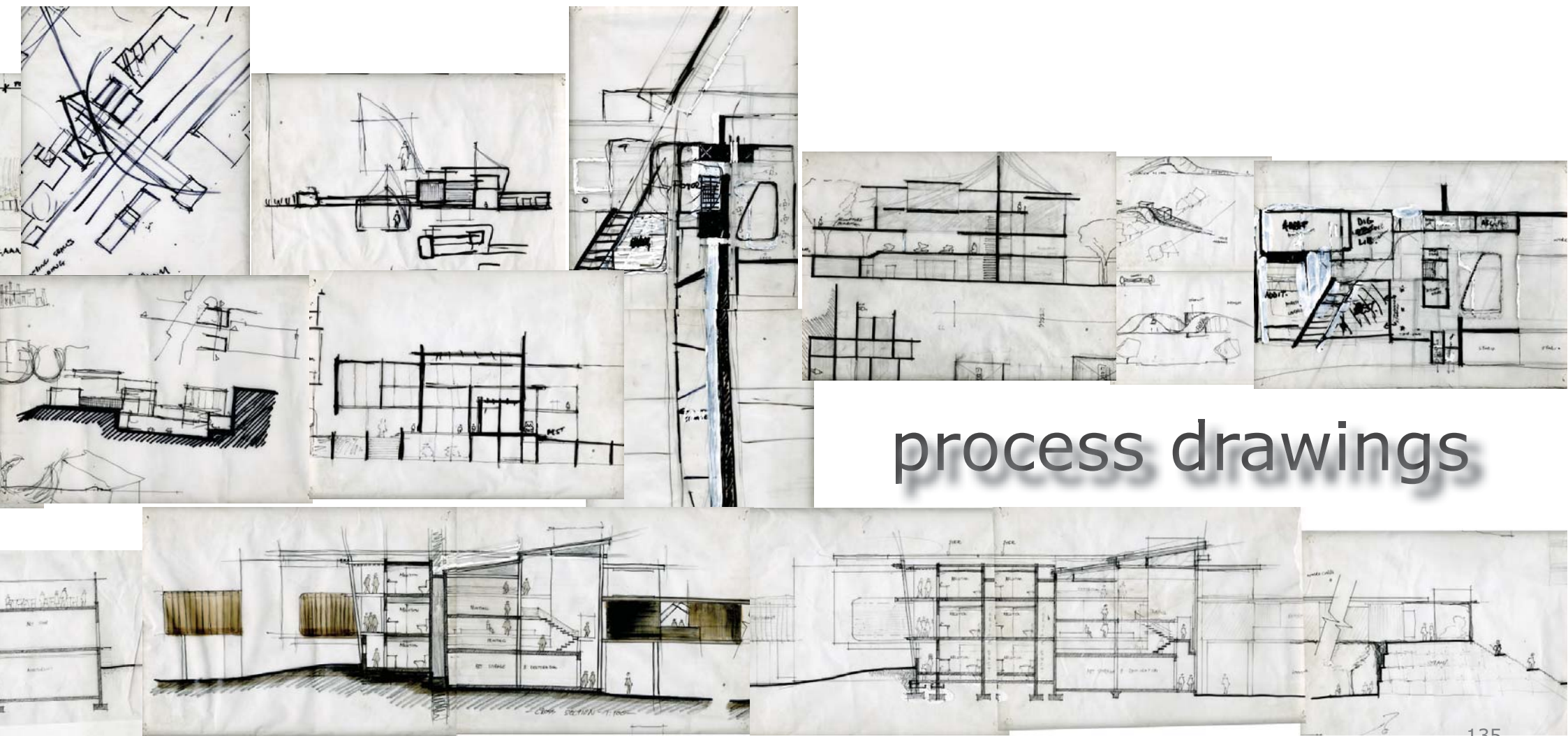


UNIVERSITEIT VAN PRETORIA  
UNIVERSITY OF PRETORIA  
YUNIBESITHI YA PRETORIA



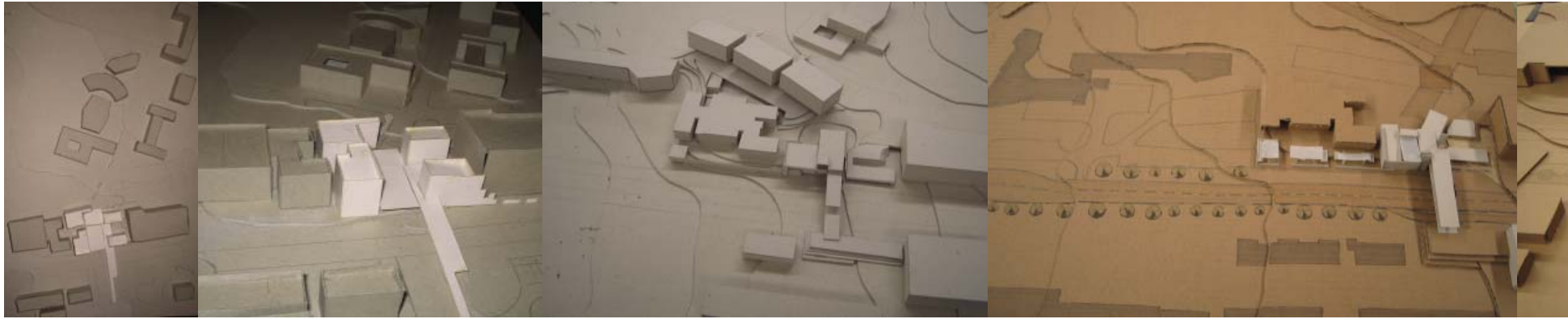


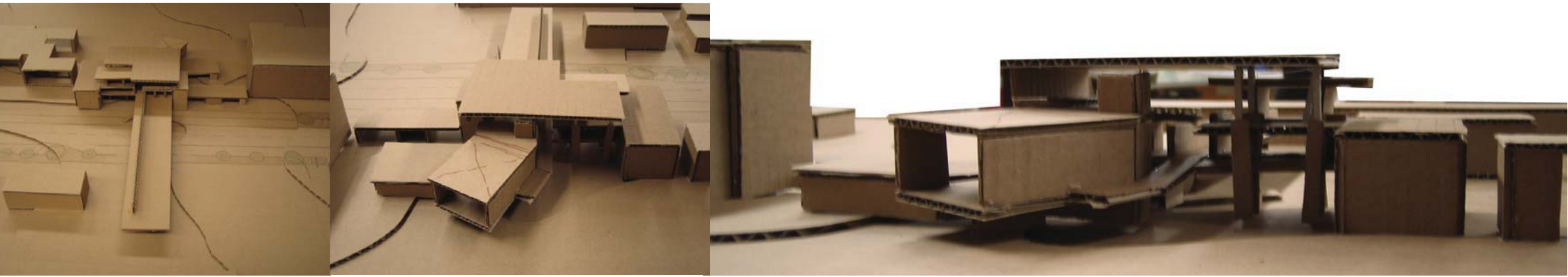




# process drawings







physical process models



digital process models

137