

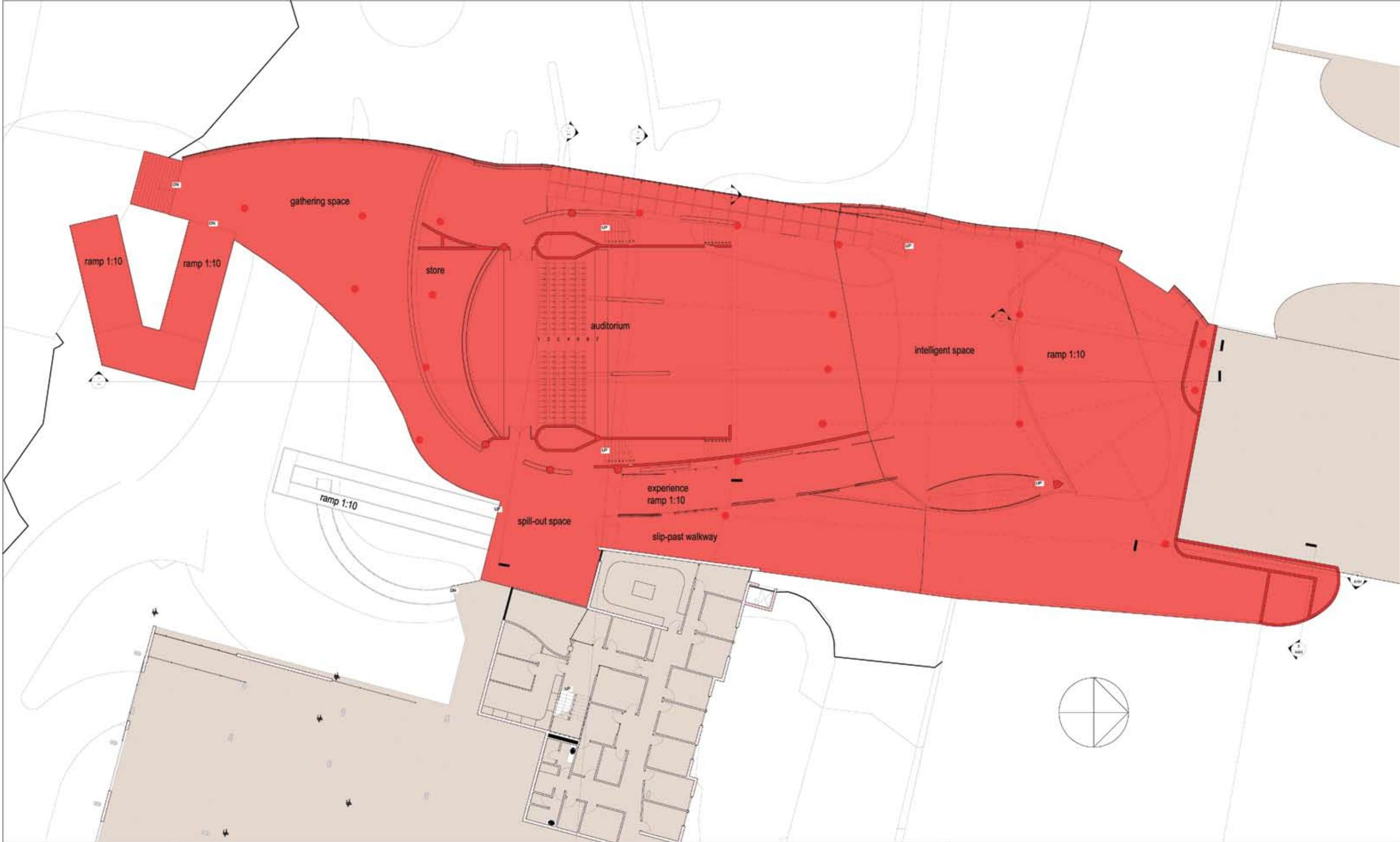
siteplan

izak coetsee m.prof(arch)

thesis 2008

the monster

university of pretoria



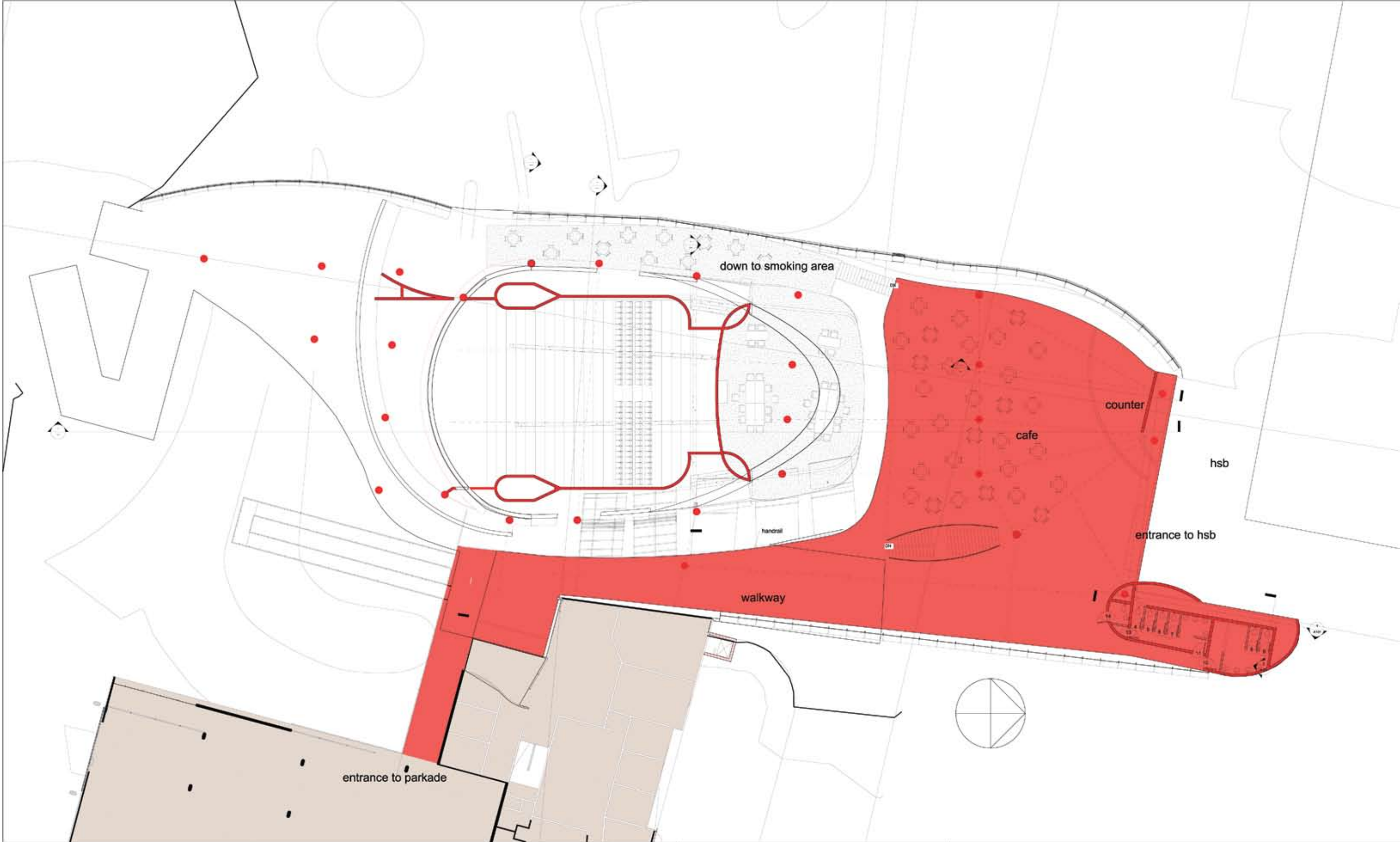
upperground

izak coetzee m.prof(arch)

thesis 2008

the monster

university of pretoria



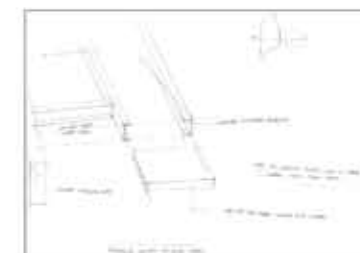
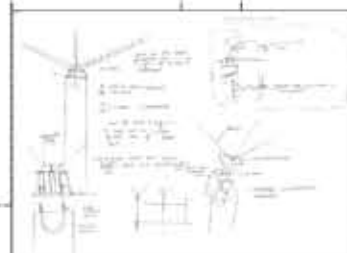
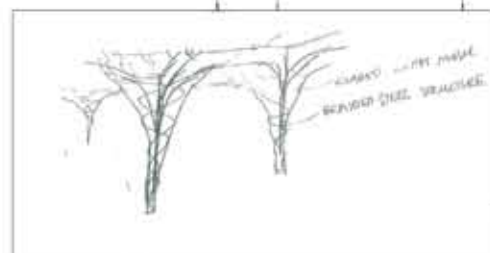
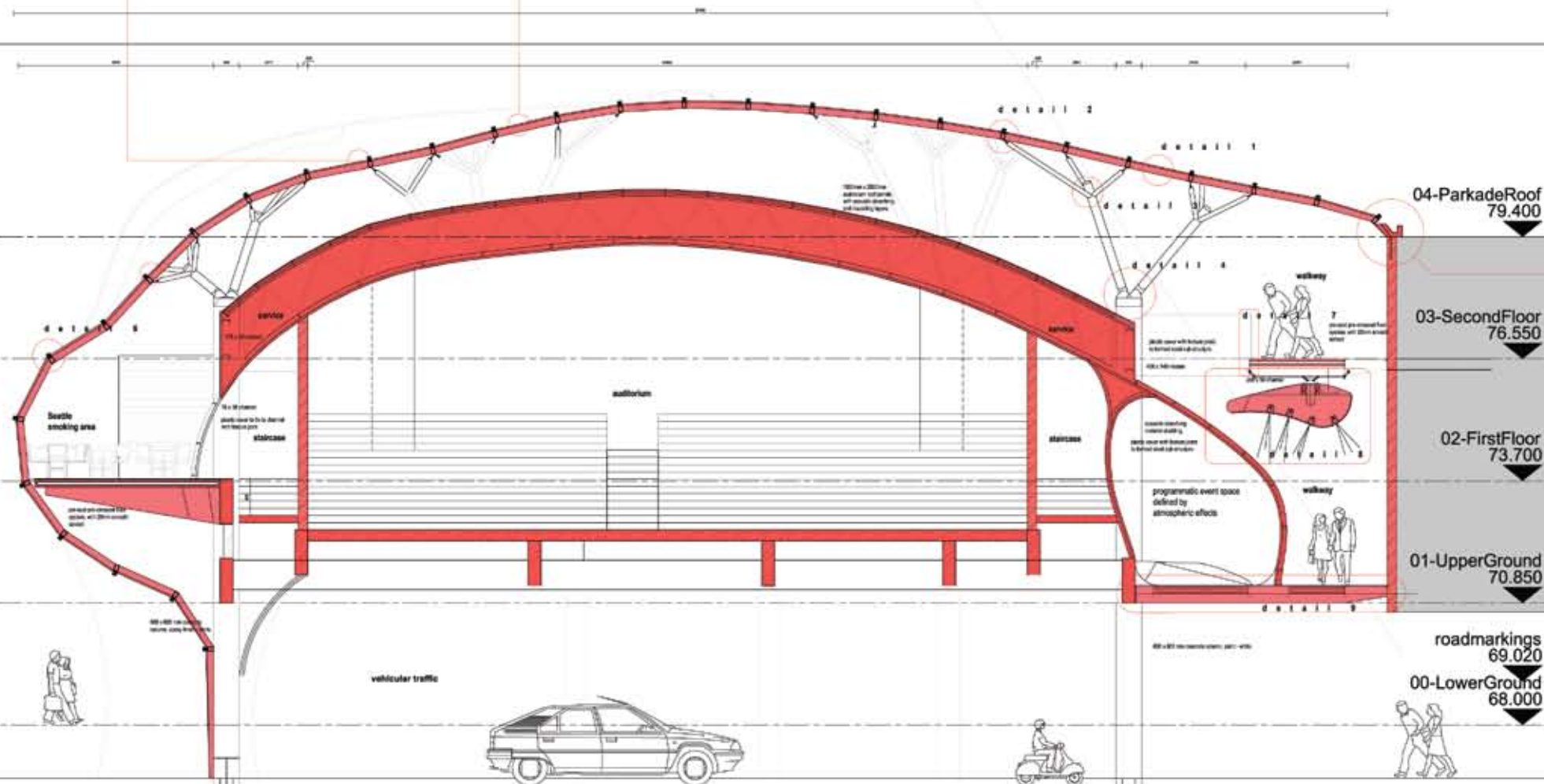
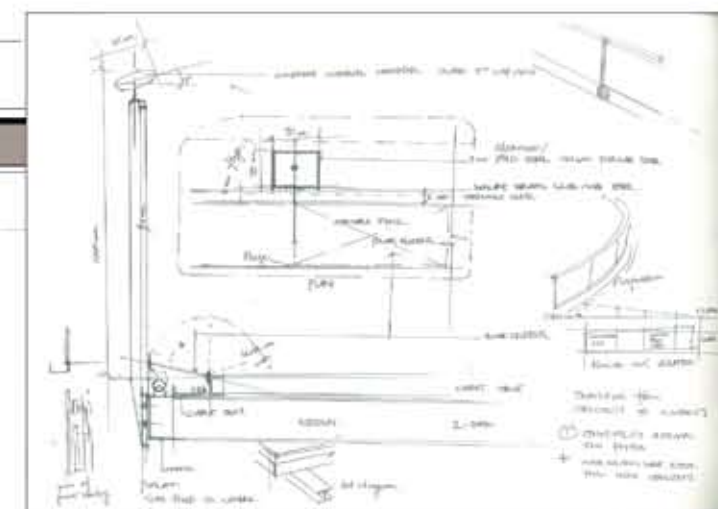
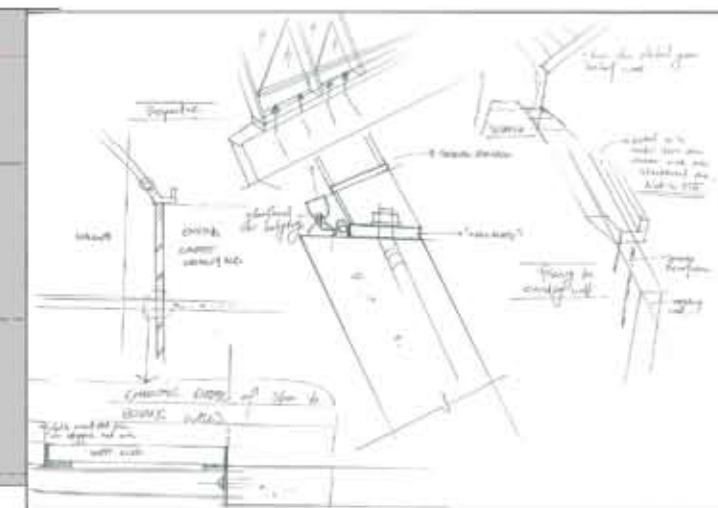
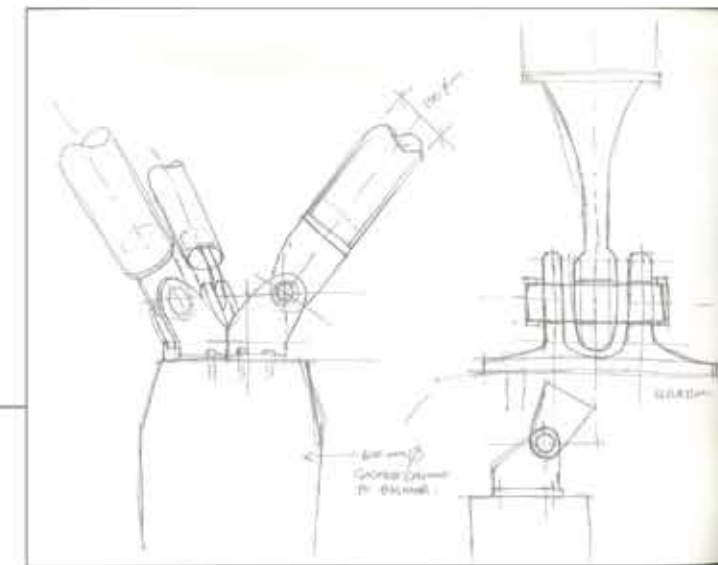
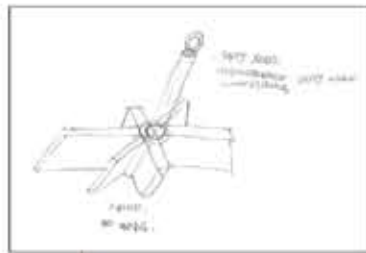
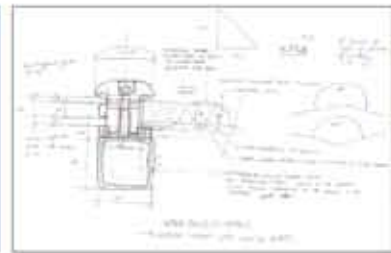
first floor

izak coetsee m.prof(arch)

thesis 2008

the monster

university of pretoria



section a-a

structure - fixings

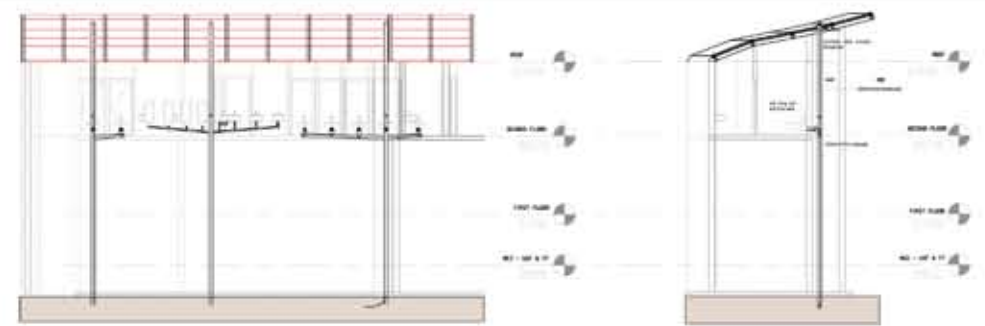
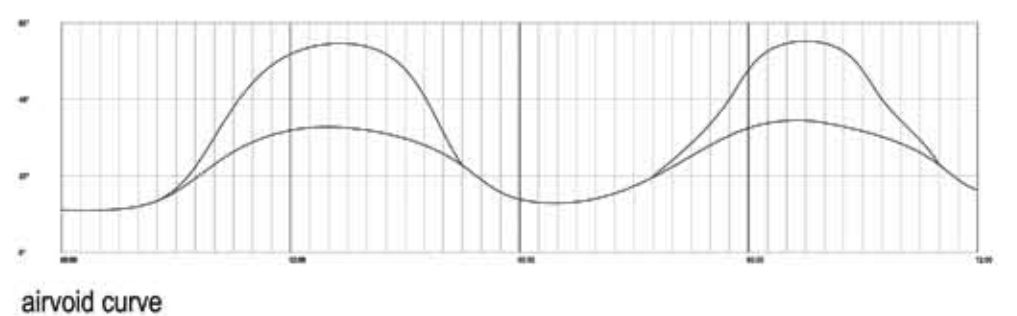
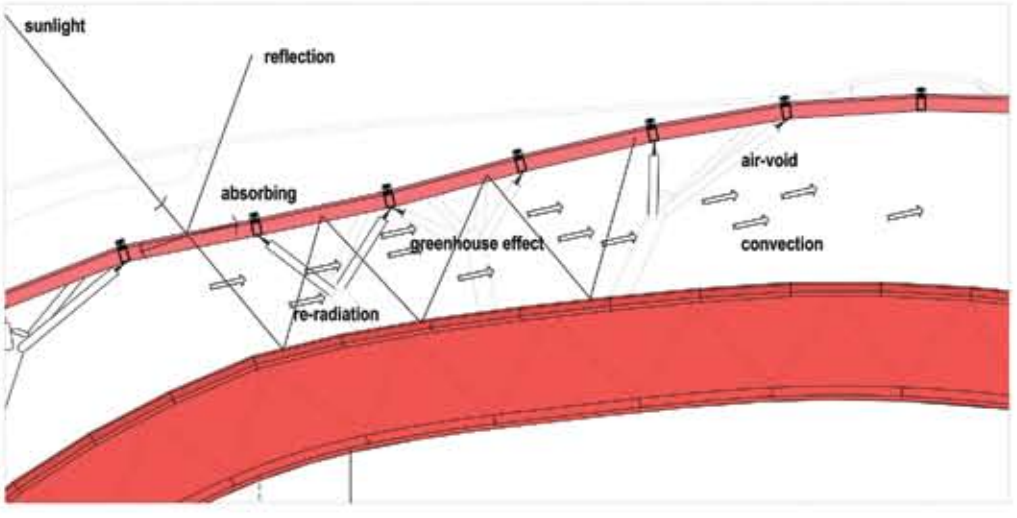
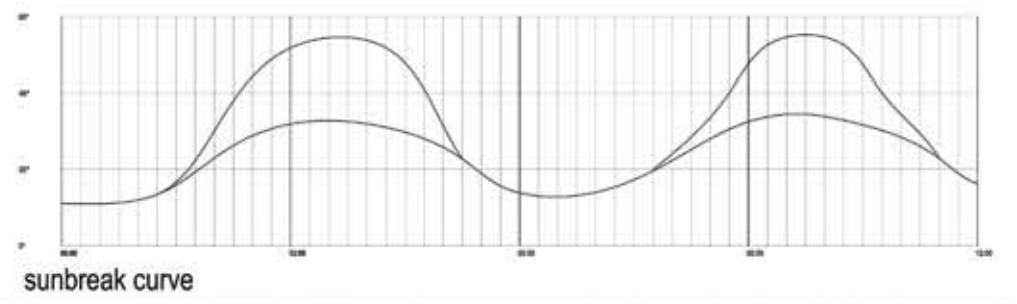
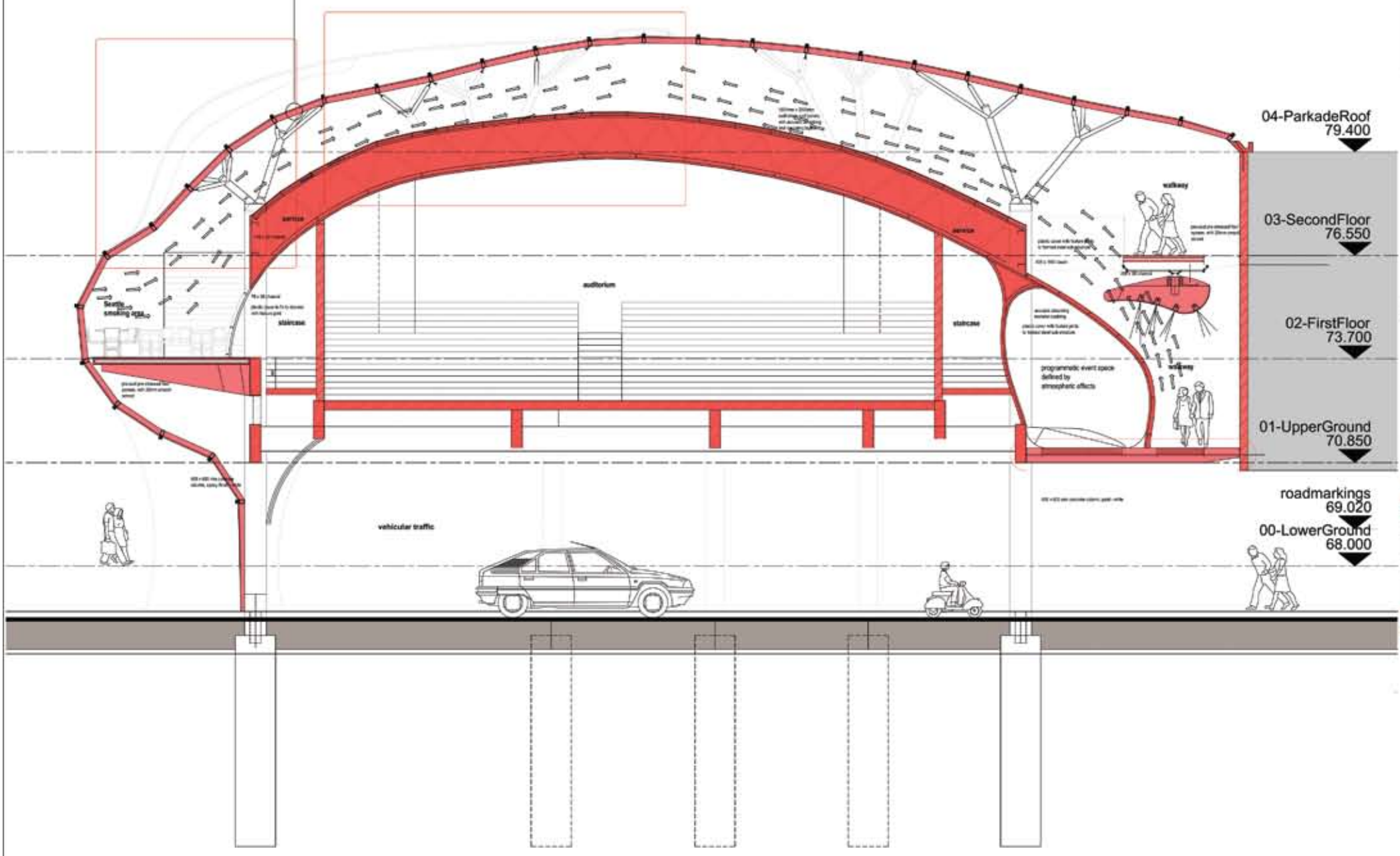
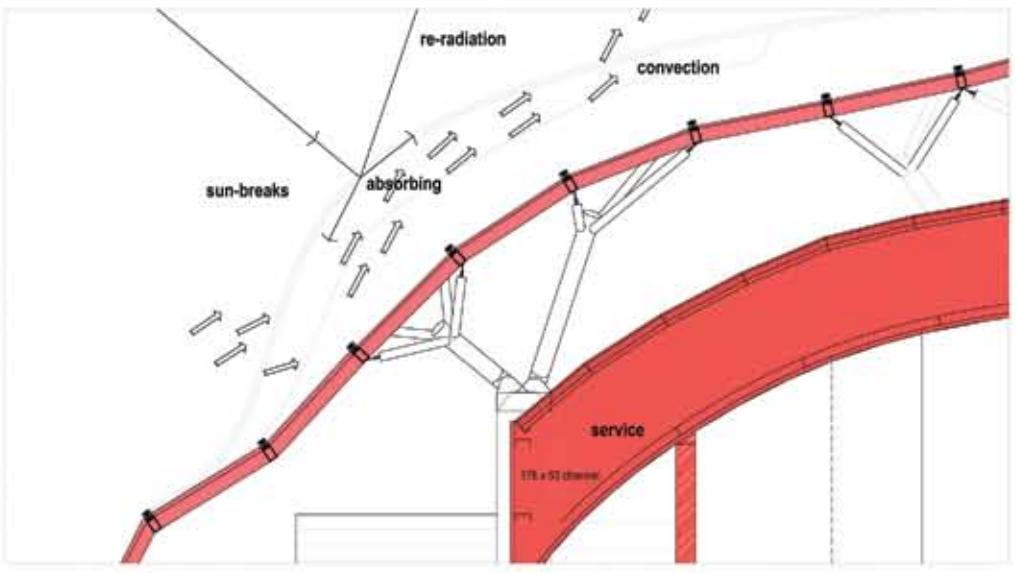
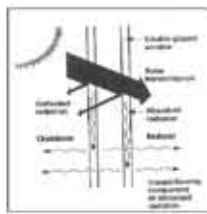
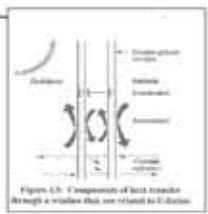
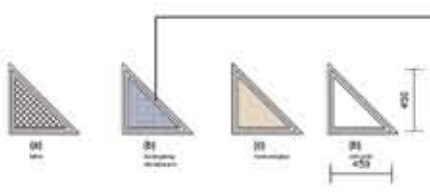
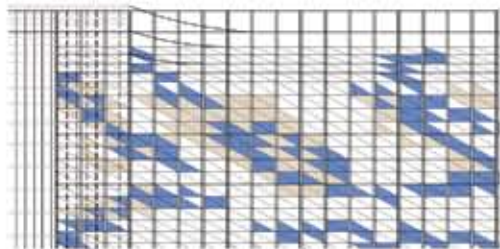
izak coetzee m.prof(arch)

thes i s 2008

monster

university of pretoria





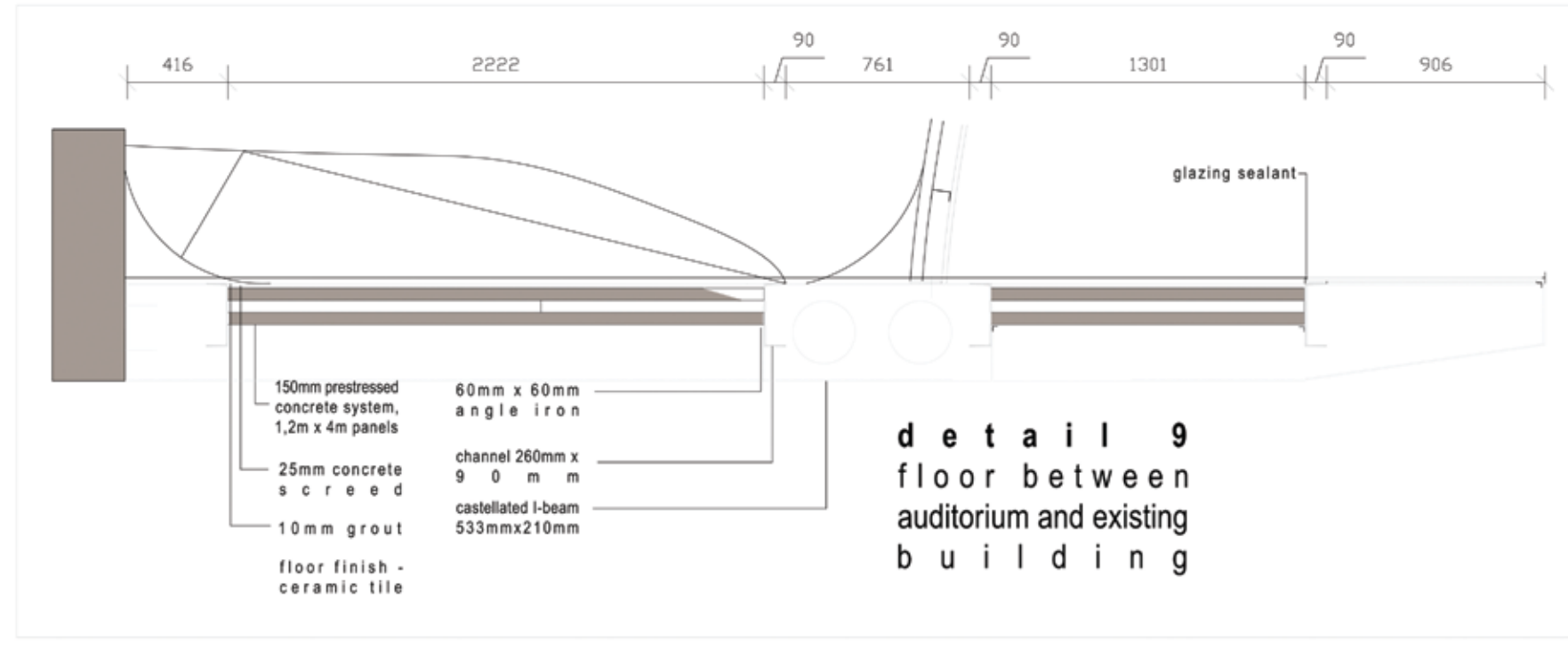
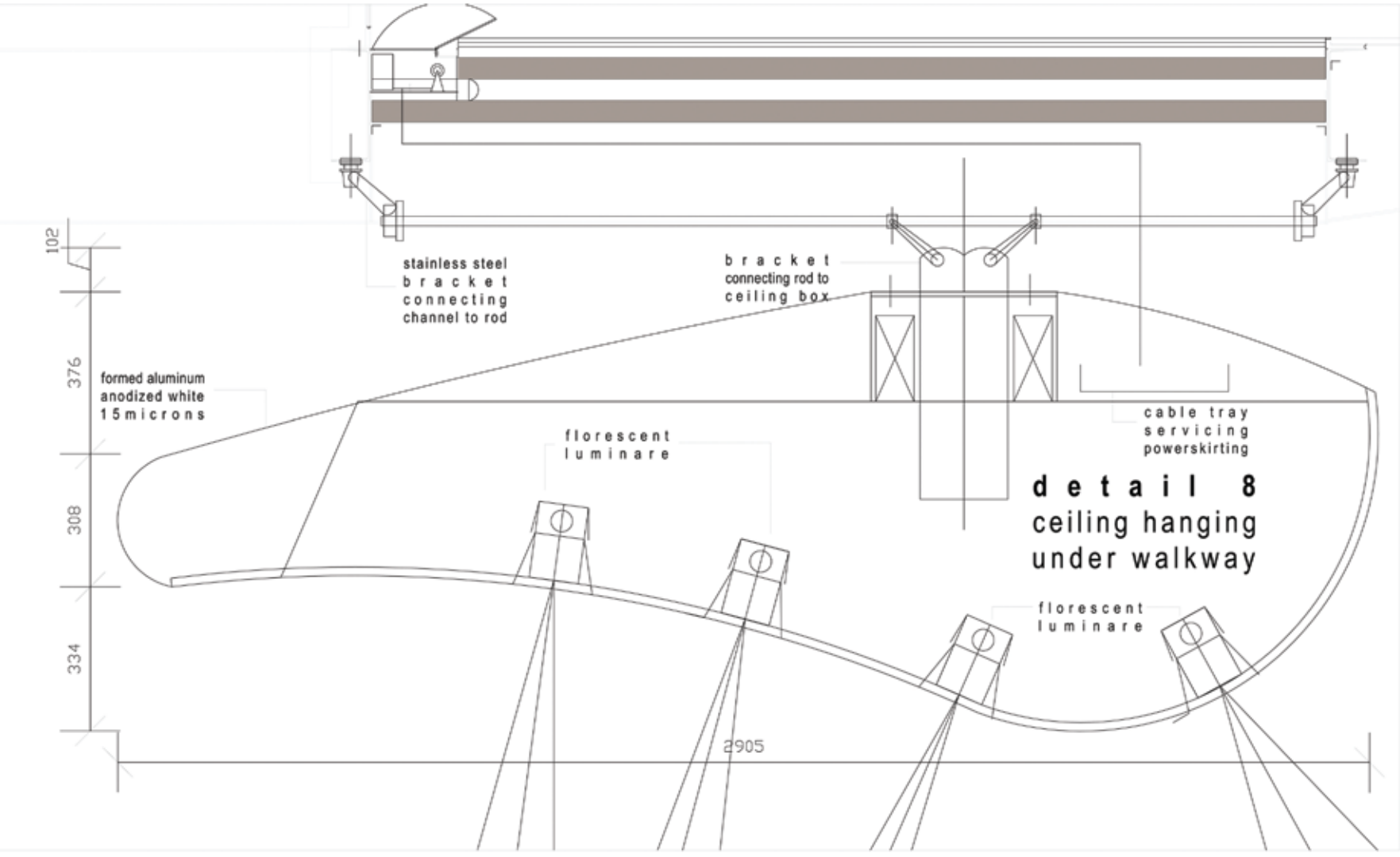
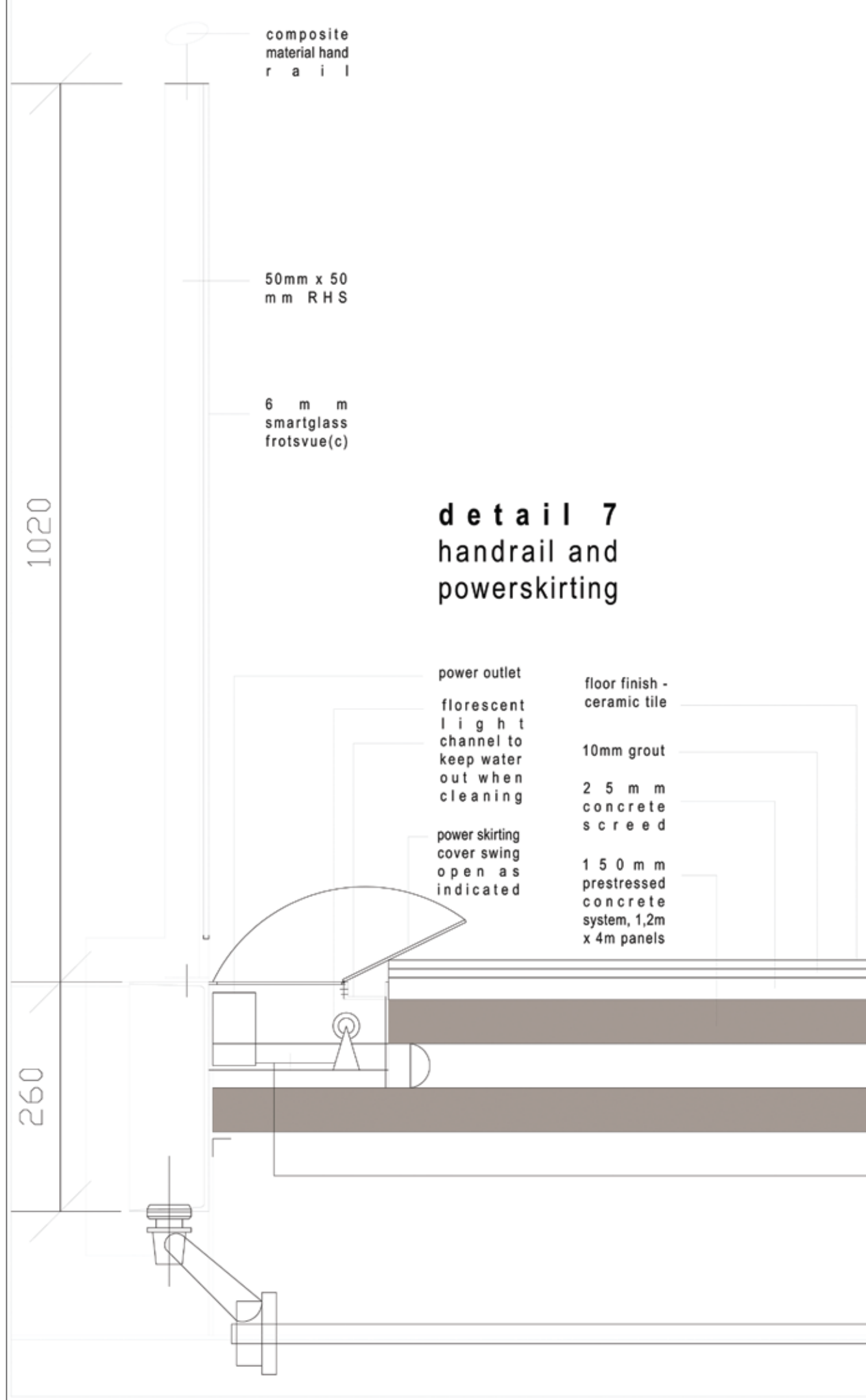
section
service duct

section a-a

izak coetzee m.prof(arch)
this is 2008
monster
university of pretoria

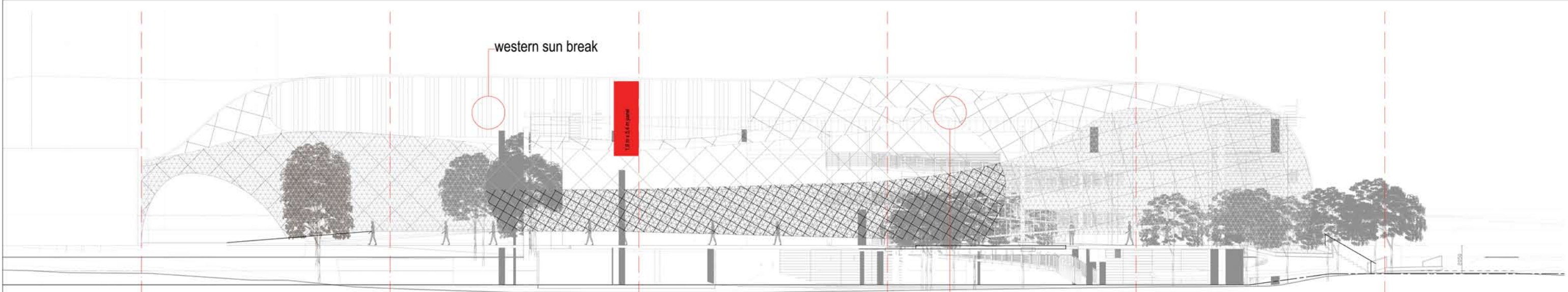
climatic performance - material properties





details

izak coetzee m.prof(arch)
thesis 2008
the monster
university of pretoria



western sun break

1,8 m x 5,4 m panel

sector 1

sector 2

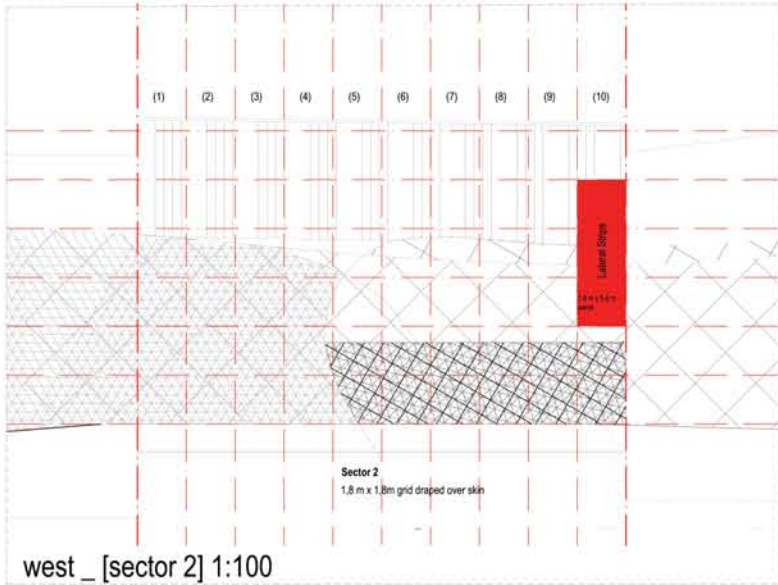
sector 3

sector 4

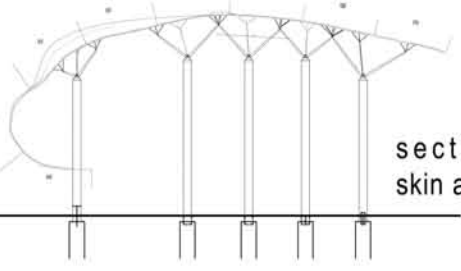
sector 5

west 1:100

* solid, translucent and glazed panel arrangement



west _ [sector 2] 1:100

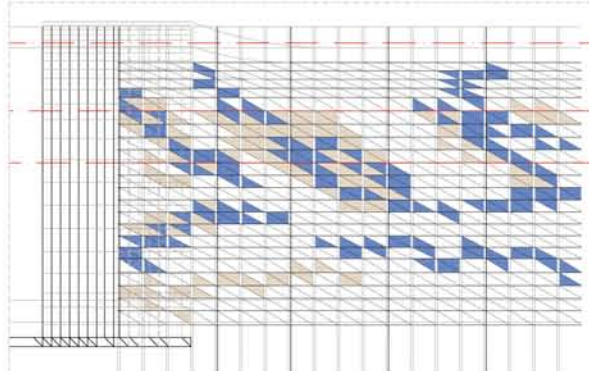
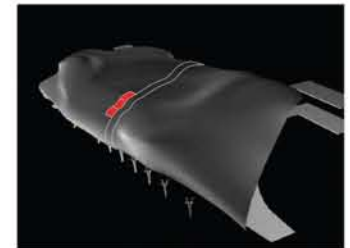


section a-a skin assembly



west elevation 1:100

Zlote Tarasy ladder strip assembly on site (ARUP journal)

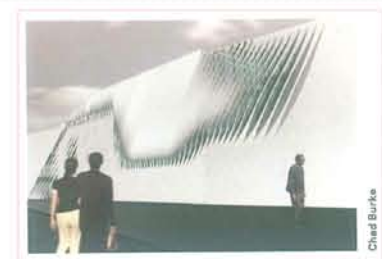
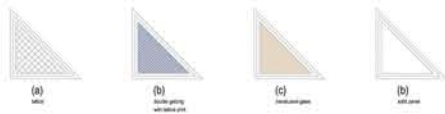


assembled off-site in a workshop

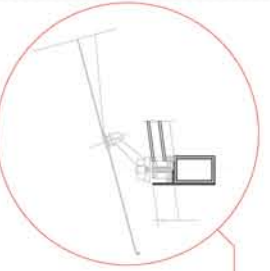
Skin piece (d) [co-ordinates] 4 x 4 facet piece assembled into 1,8 x 5,4 m panels off-site in a workshop and transported to site 1,8m x 1,8m piece

(1) (2) (3)

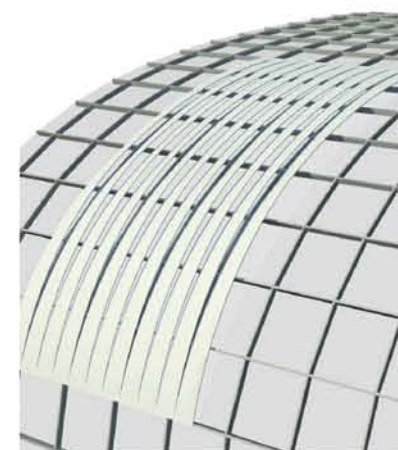
assign co-ordinates to nodes



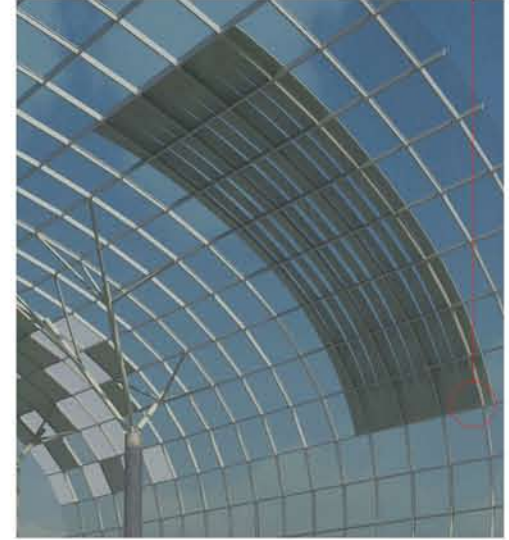
detail 6 glazing button with stainless steel bracket securing sun breaks



western sun breaks precedent (verb, boogazine, p 66)



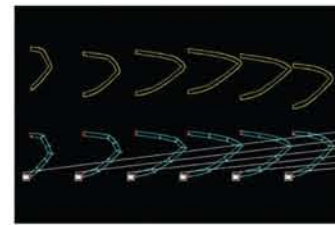
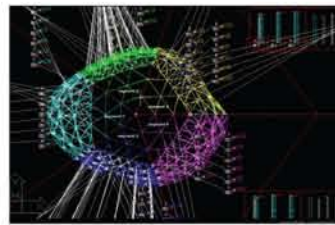
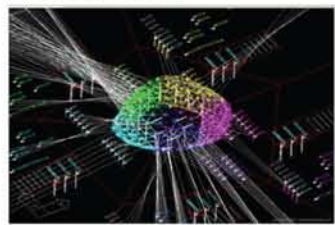
western sun breaks



building process precedent from www.oosterhuis.nl



computer model divided into sectors



pieces flattened and laser-cut from steel



assembled in a workshop off-site



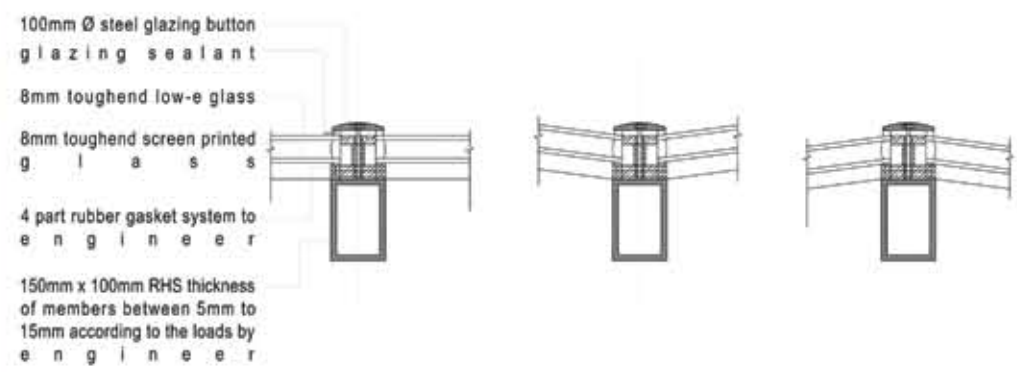
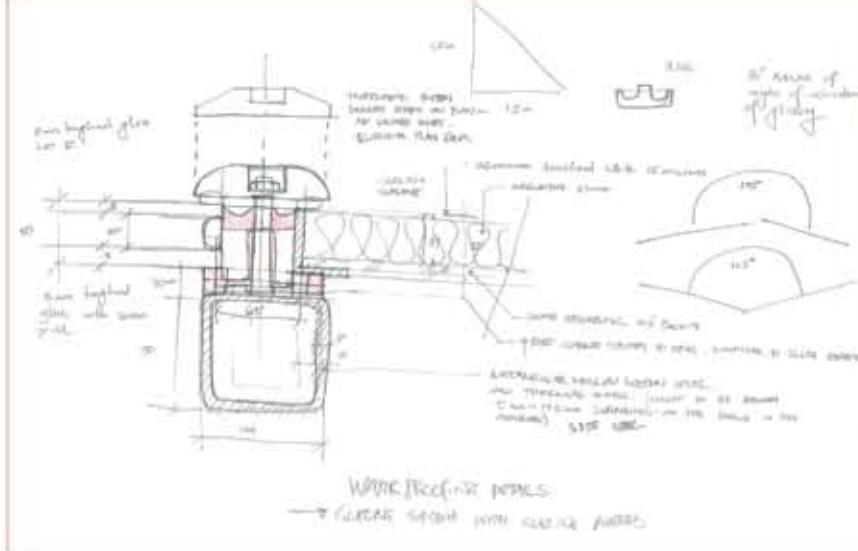
transported to site and completed

Elevation

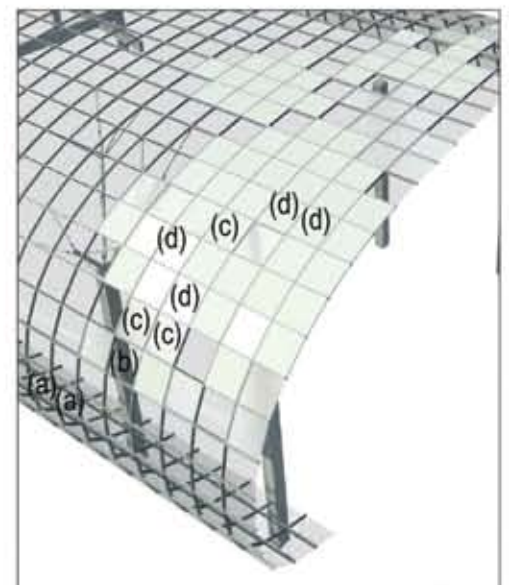
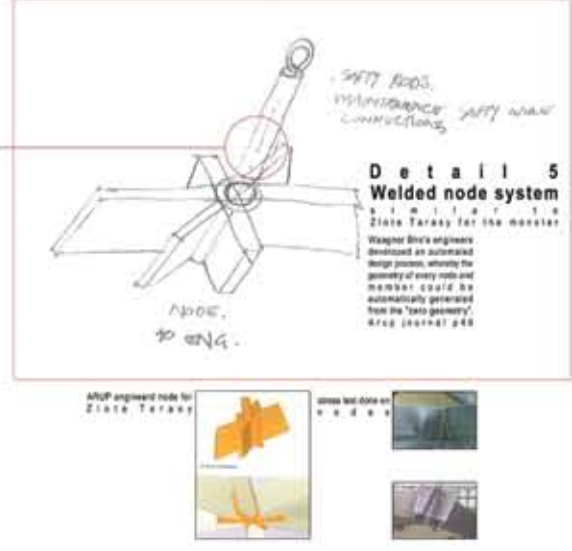
izak coetsee m.prof(arch)
thesis 2008
monster at the gate
university of pretoria

Structural - Production

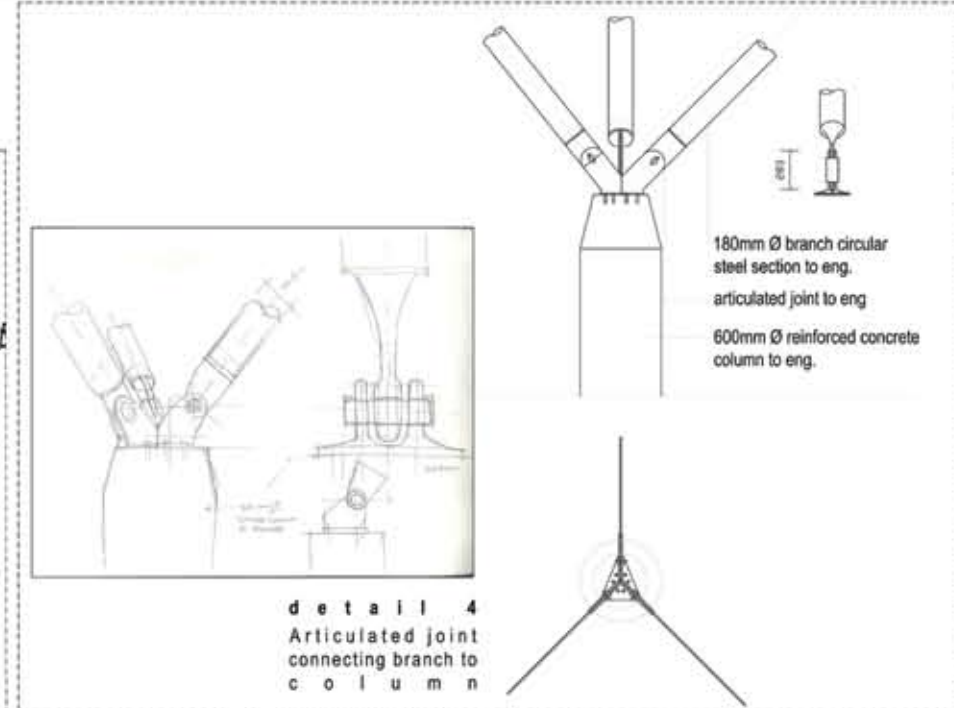
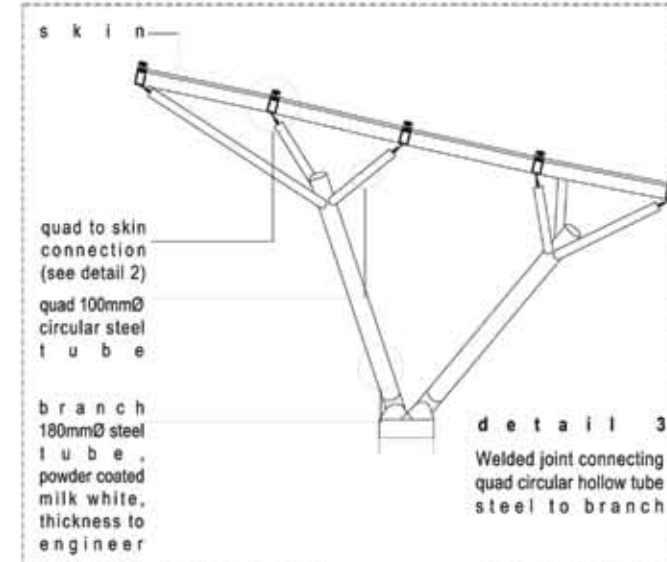
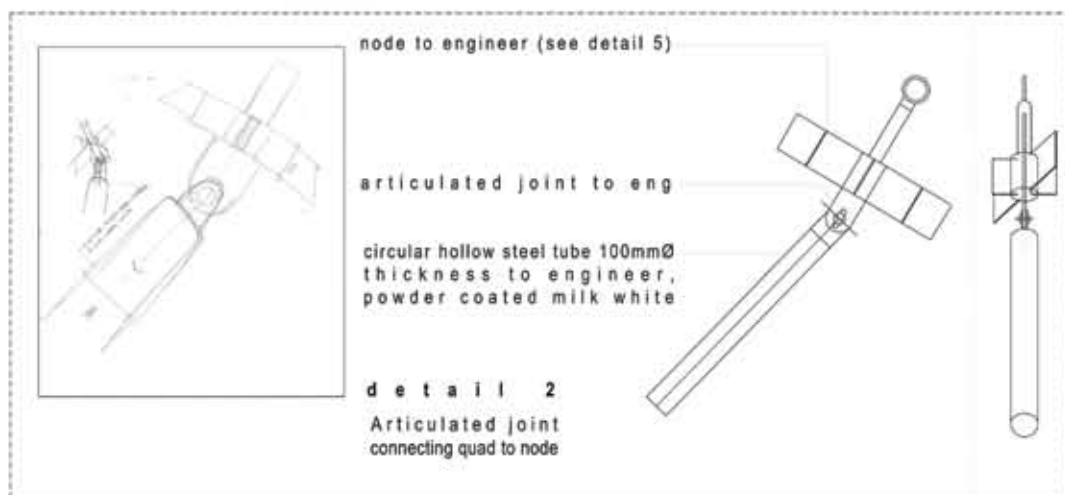




waterproofing detail glazing system with glazing buttons detail 1



precedent



Elevation
izak coetzee m.prof(arch)
thesis 2008
monster at the gate
university of pretoria

Skin - waterproofing and support
UNIVERSITEIT VAN PRETORIA
UNIVERSITY OF PRETORIA
YUNIBESITHI YA PRETORIA