



UNIVERSITEIT VAN PRETORIA
UNIVERSITY OF PRETORIA
YUNIBESITHI YA PRETORIA

NEW ROYAL THEATRE

The Marabi Theatre as locus for Cultural Reproduction

*Submitted in partial fulfilment of the requirements for the degree of
Magister of Architecture, MArch(Prof), the Faculty of Engineering,
Built Environment and Information Technology.
University of Pretoria.
October, 2011*

BUILDING ADDRESS

c/o Jerusalem and Grand Street, Marabastad, Pretoria.

FUNCTION

Multi-use theatre

RESEARCH FIELD

Heritage and Cultural Landscapes

CONTENTS

Acknowledgements			
List of Figures			
Abstract			
Chapter 1 - Introduction	-13-		
1.1 Introduction	-14-		
1.2 Background	-16-		
1.2.1 Introduction to the conservation of intangible heritage			
1.2.2 Intangible Heritage in South Africa			
1.3 Problem	-22-		
1.3.1 Background to Problem Statement			
1.3.2 Problem Statement			
1.3.2.1 <i>Sub Problem</i>			
1.4 Research Methodology	-24-		
1.5 Programme	-26-		
1.6 Client Profile	-28-		
1.6.1 Economic Justification			
Chapter 2- Context	-33-		
2.1 Study area	-34-		
2.2 The Story of Marabastad	-36-		
2.2.1 Physical Development			
2.2.2 Cultural History			
2.2.2.1 <i>The Marabi Culture</i>			
2.2.2.2 <i>Marabi Music</i>			
2.2.2.3 <i>Timiti Dance Parties</i>			
2.2.2.4 <i>Illegal Beer Brewing</i>			
2.2.2.5 <i>Cultural Diversity</i>			
2.3 The Story of the Theatres	-46-		
2.4 Marabastad today	-50-		
2.4.1 Urban Fabric			
2.4.2 Public Transport			
2.4.3 Heritage Conservation Area			
2.4.4 Sectional Analysis of Marabastad Architecture			
2.5 Proposed Framework			-62-
2.5.1 Summary			
2.5.2 Site Location and Analysis			
2.5.2.1 <i>Site Description</i>			
2.5.2.2 <i>Statement of Significance for the site</i>			
Chapter 3 - Theory	-71-		
3.1 Introduction	-72-		
3.2 Theoretical Concept	-72-		
RINGING THE DEAD MAN'S BELL			
3.3 Translation into Architecture	-98-		
3.4 Conclusion	-98-		
Chapter 4-Precedents	-101-		
4.1 Critique on South African Heritage Architecture	-102-		
4.2 Theoretical Precedents	-106-		
4.2.1 Propelling vs. Pathological Permanence			
4.2.2 The Architecture of Fragility			
4.3 Local Precedents	-112-		
4.3.1 The Vilakazi Street Precinct Artwork Programme			
4.3.2 The Sans Souci Cinema			
4.4 Functional Precedents	-116-		
4.4.1 The Dee and Charles Wyly Theatre			
Chapter 5- Design development	-119-		
5.1 Introduction to design process	-120-		
5.1.1 Theoretical response	-120-		
5.1.2 Response to physical site conditions	-124-		
5.1.3 Programmatic requirements	-128-		
5.1.4 Response to Aziz Tayob ISDF	-136-		
5.1.5 Historical conditions	-137-		
5.1.6 Marabastad architecture	-142-		
5.1.7 Environmental considerations	-148-		
5.1.8 Synthesis	-149-		

Chapter 6- Technical Investigation	-151-
6.1 Introduction	-152-
6.2 Layered exterior	-152-
6.3 Dynamic interior	-156-
6.3.1 Steel frame structure	
6.3.2 Operable flooring system	
6.3.3 Retractable fabric roofing system	
6.3.4 Retractable seating system	
6.3.5 Operable stage	
6.3.6 Operable louvered skin	
6.4 Support spaces	-170-
6.5 Services and systems	-174-
6.5.1 Municipal services	
6.5.2 Drainage strategy	
Chapter 7- Conclusion	-178-
Bibliography	-180-
Addendum A - Final drawings	
Addendum B - Model	

SPECIAL THANKS TO:
Arthur Barker- Study Leader
Jacques Laubscher - Year Coordinator

To my Parents

- LIST OF FIGURES -

CHAPTER 1

Fig 1.1
The evolution of identity
Author

Fig 1.2
The Folklorist
Author

Fig 1.3
The development of UNESCO's model for the conservation of intangible heritage.
Author

Fig 1.4
Red Location Museum, Port Elizabeth
Noero Wolff Architects, 2006 (sammlung, 2011)

Fig 1.5
Cradock Four Memorial, Cradock
GP Greeff and Associates, 2010
Author

Fig 1.6
Walter Sisulu Square, Soweto
StudioMAS, 2005
Author

Fig 1.7
Apartheid Museum, Johannesburg
Mashabane Rose, GAPP, Britz Roodt and Linda Mvusi, 2003
Author

Fig 1.8
Freedom Park, Pretoria
Mashabane Rose, GAPP and MMA, 2006
Author

Fig 1.9
Hector Peterson Museum, Soweto
Mashabane Rose Architects, 2002 (flickr, 2011)

Fig 1.10
The Merry Blackbirds - 1930's Jazz troupe.
(Ballantine, 1993: 53)

Fig 1.11
Steeve the Jazz King's Records: Historical Remnant of the Marabi era. To be re-programmed as a public sound archive where sounds from the New Royal Theatre are made available to the public.
Author

Fig 1.12
Field Sketch: The Empire Theatre today, currently shops but to be reprogrammed as a micro-brewery that brews local historical beers.
Author

Fig 1.13
Field Sketch: The Orient Theatre today, currently a shebeen and shops, to be restored to a cinema.
Author

Fig 1.14
Early Gallo Records Album Cover
Tsaba Tsabane No 1.
(Ballantine, 1998: 54)

CHAPTER 2

Fig 2.1
Marabastad in the context of Pretoria
Author

Fig 2.2 Adjacent page
Extent of study area
Author

Fig 2.3
Positions of the different locations
Author

Fig 2.4
Outlying townships in relation to Marabastad
Author

Fig 2.5
Marabastad Timeline
Author

Fig 2.6
Marabastad in 1905
Photo taken from Daspoortrand (Aziz-Tayob, 2002)

Fig 2.7
Sam Nhlengetwa - Township Jazz, Collage, 2001
(arthrob, 2011)

Fig 2.8
Tza-Sol plays Bass
(Thomas, 2003: 14)

Fig 2.9
Drinking beer
(Thomas, 2003: 13)

Fig 2.10
Marabastad experiential diagram
Author

Fig 2.11
From top to bottom: 1. Site of the old Royal Theatre, 2. The Empire Theatre 3. The Orient Theatre. 2011
Author

Fig 2.12
1967 Highway Scheme that was to be built through Marabastad.
(Aziz Tayob, 2002)
Site indicated

Fig 2.13
Positions of the Theatres within the Heritage Conservation area as stipulated by Le Roux, 1991
Author

Fig 2.14
Comparative densities of Marabastad in 1934, 1965 and 1998
(Janse van Rensburg, 1994)

Fig 2.15 Adjacent page
Current state of Marabastad urban fabric
Author

Fig 2.16
Pretoria's Transport Network with Marabastad as principle intermodal transport interchange
Author

Fig 2.17
Main transport nodes of Marabastad
Author with Darryn Botha

Fig 2.18
High daytime pedestrian activity due to influx of commuters
Author with Darryn Botha

Fig 2.19
Lower nighttime pedestrian activity due to exodus of commuters and the small residential component.
Author with Darryn Botha

Fig 2.20
Travelling to and from outlying homelands/townships has become part of Marabastad's heritage. These are part of a photostudy done on the subject by David Goldblatt in 1989.
(Seejarim, 2006: 48,49)

Fig 2.21
Marabastad Heritage Conservation area as stipulated by Prof. Le Roux, 1991.
Author

Fig 2.22
Life in Marabastad, Photostudy
Author

Fig 2.23
Layering of analysis data
Author with Darryn Botha

Fig 2.23
Sectional analysis of Marabastad built fabric
Author

Fig 2.23
Aziz Tayob ISDF Before and After
Author with Wallace Honiball

Fig 2.24
Aziz Tayob ISDF Model
Black: Existing Fabric
White: Proposed
Author with Darryn Botha

Fig 2.25 Adjacent, Top
Position of site in the context of Marabastad
Author

Fig 2.26 Adjacent, Bottom
Existing site condition
Author

Fig 2.27
Site analysis from Jerusalem street
Author

Fig 2.28
Site analysis from Grand street
Author

CHAPTER 3

Fig 3.1
A- Diverse cultures with a strong sense of regional autonomy
B- Homogenised cultures, loss of autonomy due to external cultural influence
Author

Fig 3.2
Increase in cultural homogeneity due to ease of information access
Author

Fig 3.3 Adjacent page
Introducing folklore (intangible heritage)
Author

Fig 3.4 Adjacent page
Isolation through misperception
Author

Fig 3.5 Adjacent page
The effects of time
Author

Fig 3.6 Adjacent page
Losing touch with the everyday
Author

Fig 3.7 Adjacent page
Architecture as archaeology of memory
Author

Fig 3.8 Adjacent page
The dead man's bell is introduced
Author

Fig 3.9 Adjacent page
Ringling the dead man's bell.
Author

Fig 3.10 Adjacent page
Re-introducing the public to their intangible heritage.
Author

Fig 3.11 Adjacent page
Critical public engagement
Author

Fig 3.12 Adjacent page
The 'anti-monument'
Author

Fig 3.13 Adjacent page
The end (is the beginning)
Author

CHAPTER 4

Fig 4.1
Comparative table illustrating tendencies in South African Heritage Architecture
Author

Fig 4.2
Pathological vs. Propelling Permanence
Author

Fig 4.3
Strong vs. Fragile architecture
Assembled by Author

Fig 4.4
Artwork at the Vilakazi Street Precinct Artwork Programme (represent, 2011)

Fig 4.5
Offstreet public activity at the Vilakazi Street Precinct Artwork Programme (witsvuvuzela, 2010)

Fig 4.6
Artwork at the Vilakazi Street Precinct Artwork Programme (thecityfix, 2011)

Fig 4.7
Model of proposed Sans Souci (Deckler, Graupner and Rasmuss, 2006: 52)

Fig 4.8
Existing ruin (Deckler, Graupner and Rasmuss, 2006: 50)

Fig 4.9
Existing ruin (Deckler, Graupner and Rasmuss, 2006: 54)

Fig 4.10
The Old Sans Souci (Deckler, Graupner and Rasmuss, 2006: 54)

- LIST OF FIGURES -

- Fig 4.11
Groundfloor Plan
(Deckler, Graupner and Rasmuss, 2006: 51)
- Fig 4.12
Development Phases
(Deckler, Graupner and Rasmuss, 2006: 53)
- Fig 4.13
Stacking of support spaces frees periphery of performance space
(rex-ny, 2011)
- Fig 4.14
Sectional diagram illustrating spacial dynamic.
(rex-ny, 2011)
- Fig 4.15
Section model
(rex-ny, 2011)
- Fig 4.17
Approach to lower level foyer
(rex-ny, 2011)
- Fig 4.18
Adaptable seating configurations
(rex-ny, 2011)
- Fig 4.19
Public space around building
(rex-ny, 2011)
- CHAPTER 5
- Fig 5.1
Parti diagram -
culmination of responses to design generators
Author
- Fig 5.2
Concept Model - July
Indicating layout of physical responses to theoretical argument
Author
- Fig 5.3
Concept Sketch- July
Early indication of form
Author
- Fig 5.4
Theoretical premise - presencing absence, uncovering that which
is already there
Author
- Fig 5.5
Concept Sketch- July
Early indication of form
Author
- Fig 5.6
The Sacred vs. The Profane
Mirriamen temple and New Royal Theatre tower (concept sketch)
Author
- Fig 5.7
Activity on site
Author
- Fig 5.8
Response to physical conditions
Groundfloor Plan - July; NTS
Author
- Fig 5.9
Performance space re-united with public space
Author
- Fig 5.10
Theatre configurations (Principle)
Author
- Fig 5.11
Theatre configurations (Application of principle - July)
Steel frame with infill & cladding
Author
- Fig 5.12
Concept drawings - July
From top to bottom: Arena configuration,
Configurations on plan, Auditorium configuration
Author
- Fig 5.13
Concept drawings - July
Plaza configuration
Author
- Fig 5.14
Concept drawings - July
Closed for climatic control/securety/privacy
/intimacy of performance
Author
- Fig 5.15
SKETCH PLAN - Recording Studio
SCALE 1:100
Author
- Fig 5.16
SKETCH PLAN - Artist Accommodation
NTS
Author
- Fig 5.17 (Below)
Concept model - July
Indicating response to historical conditions and Aziz Tayob ISDF
Author
- Fig 5.18
Site model - September
Indicating response to historical
conditions and Aziz Tayob ISDF
Author
- Fig 5.19
SITE PLAN
NTS
Author
- Fig 5.20
Initial concept drawing - April
Response to threshold layering and amalgamation
of performance space with public space (See Fig 5.9; p 129.)
Author
- Fig 5.21
Analytical diagram of the layering of
Marabastad architecture - April
Author
- Fig 5.22
North - South Section : June
NTS
Author
- Fig 5.23
North - South Section : July
NTS
Author
- Fig 5.24
North - South Section : September
SCALE 1:200
Author
- Fig 5.25
East - West Section : September
SCALE 1:200
Author
- Fig 5.26
Exploded Parti Diagram(Left)
vs. Physical Responses (Right)
Author
- CHAPTER 6
- Fig 6.1
Primary components of structure
Author
- Fig 6.2
Exploded axonometric - layered exterior
Author
- Fig 6.3
North-South Section through the layered exterior
of the structure, illustrating thresholds, threshold functions and
programming of spaces between layers.
Author
- Fig 6.4
Components of the dynamic interior
Author
- Fig 6.5 (Opposite)
Theatre configurations
Author
- Fig 6.6
Composition of steel frame structure
Author
- Fig 6.7
Materials for operable floor system
Author
- Fig 6.8
Exploded floor system
Author
- Fig 6.9
Exploded truss system
Author
- Fig 6.10
SERAPID Linklift drive mechanism
www.serapid.com
- Fig 6.11
Detail showing beam to floor junction, with SERAPID Linklift below
access floor.
Author
- Fig 6.12
Retractable fabric roof (3D Section).
Author
- Fig 6.14
The Khanda retractable seating system.
(www.khandaseating.co.za)
- Fig 6.16
The Pentalift TL-series scissor lift table.
(www.pentalift.co.za)
- Fig 6.17
Exploded detail - lowered skin.
NTS
Author
- Fig 6.18
Theatre skin perimeter section.
NTS
Author
- Fig 6.19
Folding panel operation.
Author
- Fig 6.20
Conceal (oblique) vs reveal (direct).
Author
- Fig 6.21
Conceal (oblique) vs reveal (direct).
Author
- Fig 6.22
PLAN- Sub Level
SCALE 1:400
Author
- Fig 6.23
Support spaces stacked above
and below groundlevel to liberate
edges of performance space.
Author
- Fig 6.24
PLAN- First floor
SCALE 1:400
Author
- Fig 6.25
PLAN- Ground Floor
Showing permeability of
groundfloor when in open position.
SCALE 1:300
Author
- Fig 6.26
Municipal service connection.
Author
- Fig 6.27
Drainage strategy.
Author
- CHAPTER 7
- Fig 7.1
View From Grand Street.
Author

ABSTRACT

This dissertation investigates the role of architecture in the conservation of intangible heritage with specific reference to the ‘Marabi’ culture, a vibrant township culture unique to Marabastad in the North West of Pretoria which played a formative role in the development of South African popular culture from as early as the 1930’s.

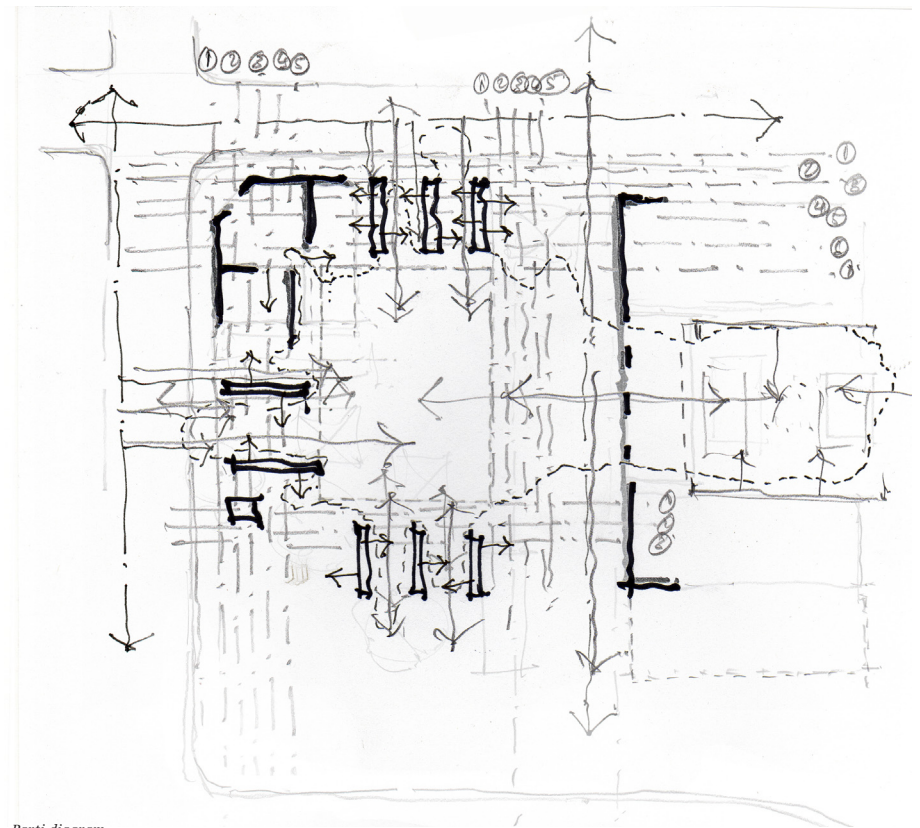
Due to the relocation of its citizens, the demolition of the Royal Theatre (together with the decommissioning of the Empire and Orient theatres) and the increasing effects of global cultural homogenization Marabastad has become dislocated from its cultural heritage. The principle aim of the dissertation is to re-introduce aspects of Marabastad’s cultural heritage within it’s current context.

The proposal intends to revive historical cultural practices by re-establishing the physical loci that once hosted them, which in the context of Marabastad, are the The Royal, Empire and Orient theatres.

The proposed intervention focuses specifically on the site of the Royal Theatre which was demolished in 1967. The project aims to (re)introduce a multi-form theatre on the site which will once again facilitate the cultural practices unique to the Marabi culture.

The architectural response is informed primarily by the following:

1. The historical function of the ‘Marabi’ theatre as a multi-use, adaptable space that had to accommodate a variety of functions such as town hall, cinema, school, church hall, events venue, dancehall and theatre.
2. An analysis of the existing historical built fabric of Marabastad (which reveals a complex layering of thresholds).
3. Programmatic requirements: Multi-form theatre with shebeen, informal restaurant, recording studio and artist accommodation.
4. Amalgamation of performance space with public space within a historical meaning framework.
5. Response to contextual conditions, both current and proposed in the 2002 Aziz Tayob Meyer Pienaar Integrated Spacial Design Framework.



Parti diagram
Author