

contents

University of Pretoria etd – Novellie, J (2007)

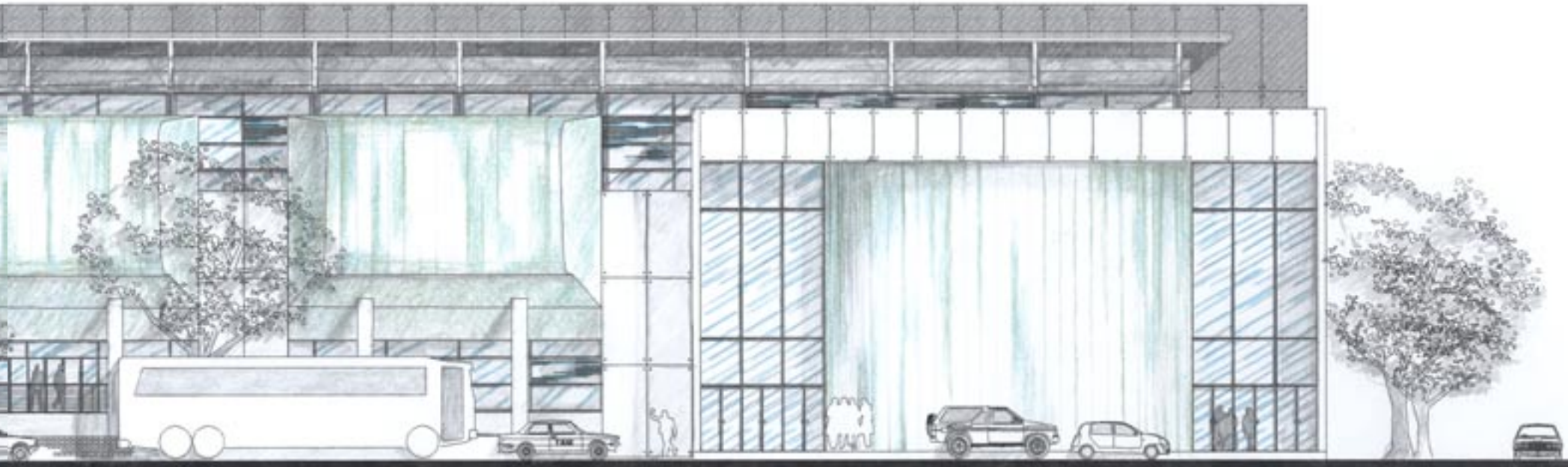
list of illustrations >>	4
list of abbreviations >>	17
introduction >>	11
theoretical exploration >>	14
context study >>	22
precedent studies >>	52
design investigation >>	67
technical investigation >>	88
design proposal >>>	108
conclusion >>	117
addendum a: schedule >>	121
references >>	125

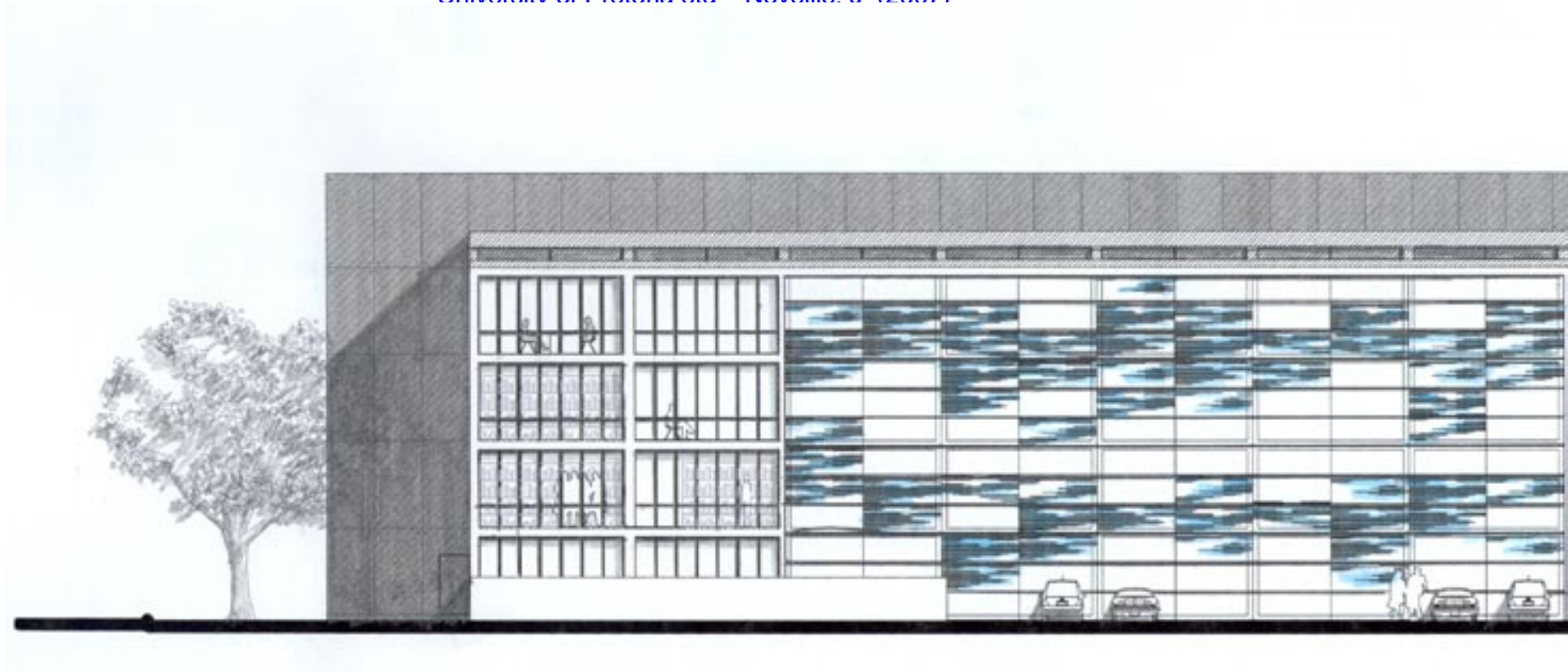


NORTH ELEVATION

The north facing side of the building houses activities to do with the spoken word. This is done to create a lively facade facing Minnaar Street and Pretorius Square encouraging passers by to interact with the building. On ground level a public open space is provided with facilities for a restaurant, picnics, exhibitions and informal trade. The series of ramps and staircases leading into the circulation hub allows for a transition from the public space into the building. Facilities leading from the circulation hub onto the northern facade include the auditorium, lecture halls, studios and workshops.

Design Proposal

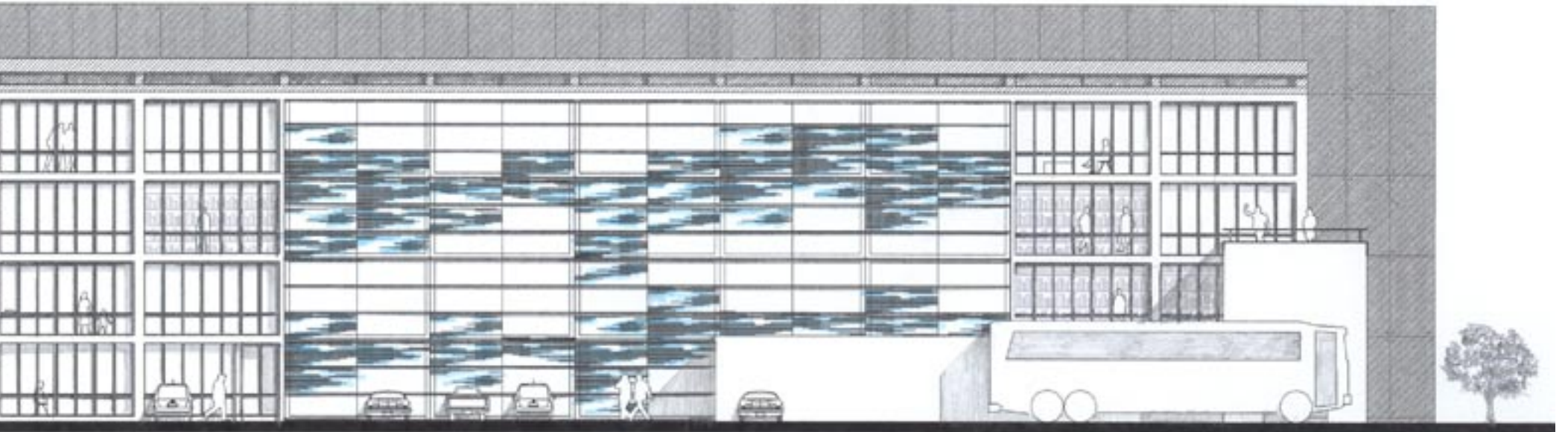




SOUTH ELEVATION

The south facing side of the building houses activities to do with the written word. These include the library and offices for researchers, academic and administrative staff. The south side of the building is quiet and is separated from the lively north side by the off-shutter concrete walls of the service core. The walls also serve as a sound barrier to ensure tranquility in the library. The south facing location is further beneficial as direct sunlight damages books but indirect natural light is ideal for reading. For this reason the facade consists of glass.

Design Proposal



Design Proposal

PUBLIC WALKWAY

Through the middle of the site, runs a public walkway allowing pedestrians to cut through the site en route from Bosman Street Station to the CBD. The walkway runs parallel to the circulation hub before branching off. This allows people to walk past the atrium and look through the glazing at the exhibitions inside. Ramps and staircases flow from the public walkway into the atrium.



fig. 6.3 Smaller walkway through the public open space past an exhibition space
112>>>

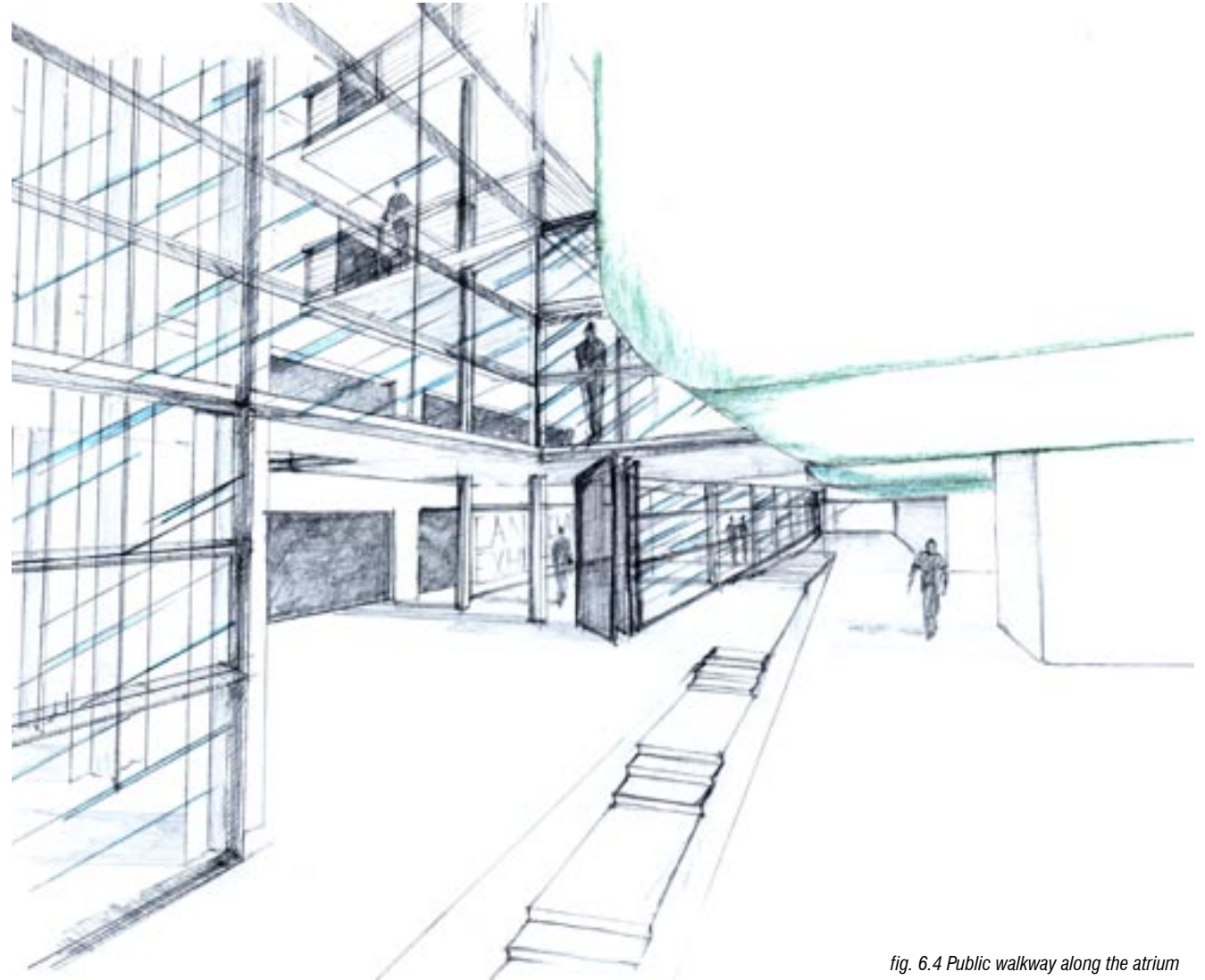


fig. 6.4 Public walkway along the atrium

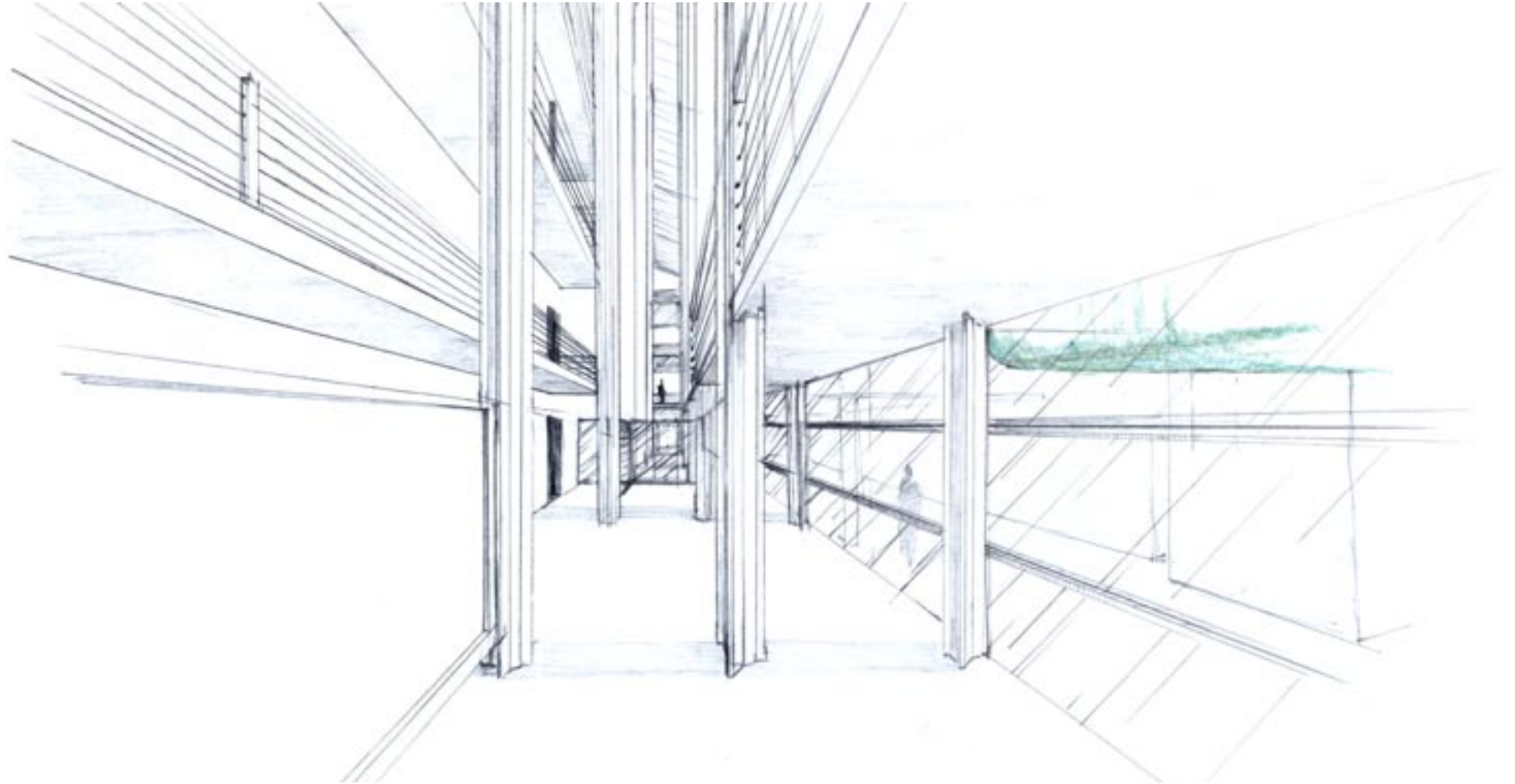


fig. 6.4 The circulation hub with exhibition space, platforms and ramps.