

## PRECEDENT STUDIES 6/ Programmatic 6.3/

FUNCTION



### Precedent Studies 6/ Programmatic 6.3/

The following Precedents are all facilities which exude the same functions as the following dissertation. Clear ordering of Space and the articulation of Movement are characteristics found in these Precedents. The approach to design is dictated by Educational or Display [Gallery] Programmes. These have greatly informed the design approach of the following dissertation. Similar function buildings are appropriate in using as precedents and are intended as a visual reference to the type of atmosphere and quality appropriate in the following dissertation.

Programme features such as Courtyards, Circulation Strips and defined spaces are all reflected in the following precedents. Expression of Programme is evident in each of the precedents through Design and especially Technical Detailing. A few of the following precedents are analysed in closer detail where the Programme and the functions of the buildings are greatly expressed through form, materials and structure under Technical Detailing 6.4/, reflecting design carried through to detail.

### Programmatic 6.3/ Education Facilities

South Africa, Pretoria:  
*University of Pretoria, Law Building/*

Japan, Fukui:  
*Fukui Prefectural Library/*

South Africa, Pretoria:  
*CSIR\_ Department of Science + Technology/*

Australia, Melbourne:  
*Australian Centre for the Moving Image*

### Museums

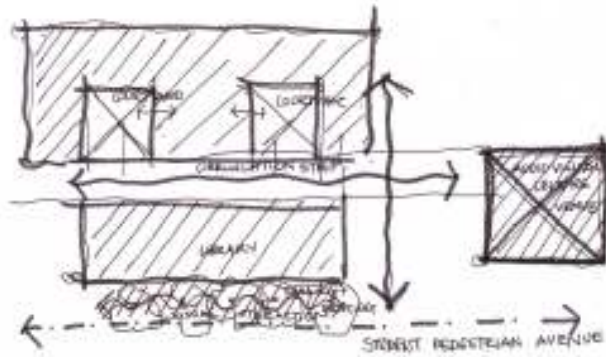
South Africa, Johannesburg:  
*Apartheid Museum/*

South Africa, Cradle of Humankind:  
*Maropeng Visitor Center*

**6.3/ 046** Australian Centre for the Moving Image: BMW Theatre Venue [Author]  
**6.3/ 047** Australian Centre for the Moving Image: Steel Detailing [Author]  
**6.3/ 048** Australian Centre for the Moving Image: Internal Space [Author]  
**6.3/ 049** Australian Centre for the Moving Image: Triple Volume Entrance [Author]  
**6.3/ 050** Australian Centre for the Moving Image: Distorted Glass Exit [Author]  
**6.3/ 051** Australian Centre for the Moving Image: Glass Balustrade [Author]  
**6.3/ 052** Australian Centre for the Moving Image: Lattice Shell [Author]  
**6.3/ 053** Australian Centre for the Moving Image: Lattice Shell [Author]  
**6.3/ 054** Australian Centre for the Moving Image: Steel Frame [Author]  
**6.3/ 055** Apartheid Museum: Conc. Columns [Author]  
**6.3/ 056** Apartheid Museum: Sketch Plan [Author]  
**6.3/ 057** Apartheid Museum: Ramp of Reflection [Author]  
**6.3/ 058** Apartheid Museum: Conc. Columns + Reflection pool [Author]  
**6.3/ 059** Apartheid Museum: Brick Wall [Author]  
**6.3/ 060** Apartheid Museum: Conc. Box [Author]  
**6.3/ 061** Apartheid Museum: Reflections from low window [Author]  
**6.3/ 062** Apartheid Museum: Reflection [Author]  
**6.3/ 063** Apartheid Museum: Reflection [Author]  
**6.3/ 064** Apartheid Museum: Reflection pool [Author]  
**6.3/ 065** Apartheid Museum: Conc. Forms [Author]  
**6.3/ 066** Apartheid Museum: Conc. Column [Author]  
**6.3/ 067** Apartheid Museum: Reflection pool [Author]  
**6.3/ 068** Apartheid Museum: Reflection ramp [Author]  
**6.3/ 069** Apartheid Museum: External View of Conc. Box with low windows [Author]  
**6.3/ 070** Apartheid Museum: External Display Ramp [Author]  
**6.3/ 071** Maropeng Visitors Centre: Logo [Author]  
**6.3/ 072** Maropeng Visitors Centre: Sketch of Building [Author]  
**6.3/ 073** Maropeng Visitors Centre: Structural Fins [Author]  
**6.3/ 074** Maropeng Visitors Centre: Internal Space [Author]  
**6.3/ 075** Maropeng Visitors Centre: Skylight [Author]  
**6.3/ 076** Maropeng Visitors Centre: Internal Space [Author]  
**6.3/ 077** Maropeng Visitors Centre: Internal Space [Author]  
**6.3/ 078** Maropeng Visitors Centre: Off-Shutter Conc. Wall [Author]  
**6.3/ 079** Maropeng Visitors Centre: Conc. Columns as a gateway [Author]  
**6.3/ 080** Maropeng Visitors Centre: External View of museum [Author]  
**6.3/ 081** Maropeng Visitors Centre: External View of building [Author]  
**6.3/ 082** Maropeng Visitors Centre: Surrounding Landscape [Author]  
**6.3/ 083** Maropeng Visitors Centre: Sketch Section [Author]  
**6.3/ 084** Maropeng Visitors Centre: Internal Circulation [Author]  
**6.3/ 085** Maropeng Visitors Centre: Restaurant over looking view [Author]  
**6.3/ 086** Maropeng Visitors Centre: Length of Gallery underground [Author]  
**6.3/ 087** Maropeng Visitors Centre: End of Gallery Surfacing [Author]  
**6.3/ 088** Maropeng Visitors Centre: Base of Mound [Author]  
**6.3/ 089** Maropeng Visitors Centre: End of Gallery Wall + Circulation [Author]  
**6.3/ 090** Maropeng Visitors Centre: Gallery Wall [Author]  
**6.3/ 091** Maropeng Visitors Centre: Internal Circulation Route [Author]  
**6.3/ 092** Maropeng Visitors Centre: Connection to Landscape [Author]  
**6.3/ 093** Maropeng Visitors Centre: Internal Structure [Author]  
**6.3/ 094** Maropeng Visitors Centre: Sketch Plan [Author]

#### List of Illustrations

**6.3/ 001** Uni. Of Pretoria Law Building [Author]  
**6.3/ 002** Apartheid Museum [Author]  
**6.3/ 003** Fukui Library [Author]  
**6.3/ 004** Maropeng Visitors Centre [Author]  
**6.3/ 005** Uni. Of Pretoria Law Building: Elevation [Author]  
**6.3/ 006** Uni. Of Pretoria Law Building: Models [www.krugerroos.com 12/10/2006]  
**6.3/ 007** Uni. Of Pretoria Law Building: Conc. Detailing [Author]  
**6.3/ 008** Uni. Of Pretoria Law Building: Conceptual Sketch [www.krugerroos.com 12/10/2006]  
**6.3/ 009** Uni. Of Pretoria Law Building: Circulation [Author]  
**6.3/ 010** Uni. Of Pretoria Law Building: Models [www.krugerroos.com 12/10/2006]  
**6.3/ 011** Uni. Of Pretoria Law Building: Models [www.krugerroos.com 12/10/2006]  
**6.3/ 012** Uni. Of Pretoria Law Building: Circulation Strip [Author]  
**6.3/ 013** Uni. Of Pretoria Law Building: Roofing Detail [Author]  
**6.3/ 014** Uni. Of Pretoria Law Building: End of Circulation Strip [Author]  
**6.3/ 015** Uni. Of Pretoria Law Building: External Vertical Circulation [Author]  
**6.3/ 016** Uni. Of Pretoria Law Building: Fire Escapes [Author]  
**6.3/ 017** Uni. Of Pretoria Law Building: Back Entrance [Author]  
**6.3/ 018** Uni. Of Pretoria Law Building: Circulation Strip [Author]  
**6.3/ 019** Uni. Of Pretoria Law Building: Glass Façade connection inside + outside + revealing circulation of building [Author]  
**6.3/ 020** Uni. Of Pretoria Law Building: Fire Escapes as an expressive forms [Author]  
**6.3/ 021** Uni. Of Pretoria Law Building: Roofing as expressive element covering Circulation Strip [Author]  
**6.3/ 022** Uni. Of Pretoria Law Building: University Avenue Façade [Author]  
**6.3/ 023** Uni. Of Pretoria Law Building: Front Entrance [Author]  
**6.3/ 024** Fukui Library: Building [GA DOCUMENT 75, Oct 2003; Ada Editia, Tokyo, Japan]  
**6.3/ 025** Fukui Library: Connection to Outside from inside [www.maki-and-associates.co.jp 12/10/2006]  
**6.3/ 026** Fukui Library: Plans [GA DOCUMENT 75, Oct 2003; Ada Editia, Tokyo, Japan]  
**6.3/ 027** Fukui Library: Courtyard [GA DOCUMENT 75, Oct 2003; Ada Editia, Tokyo, Japan]  
**6.3/ 028** Fukui Library: Drawings [GA DOCUMENT 75, Oct 2003; Ada Editia, Tokyo, Japan]  
**6.3/ 029** Dept. of Science + Technology: Plan Sketch [Author]  
**6.3/ 030** Dept. of Science + Technology: Entrance [Author]  
**6.3/ 031** Dept. of Science + Technology: Façade Detail [Author]  
**6.3/ 032** Dept. of Science + Technology: Glass Curtain Wall [Author]  
**6.3/ 033** Dept. of Science + Technology: Glass Detailing [Author]  
**6.3/ 034** Dept. of Science + Technology: Steel Stair [Author]  
**6.3/ 035** Dept. of Science + Technology: Louvre System [Author]  
**6.3/ 036** Dept. of Science + Technology: Circulation Sketch [Author]  
**6.3/ 037** Dept. of Science + Technology: Balconies [Author]  
**6.3/ 038** Dept. of Science + Technology: West Elevation [Author]  
**6.3/ 039** Dept. of Science + Technology: East Elevation [Author]  
**6.3/ 040** Dept. of Science + Technology: West Façade with Auditorium + Library [Author]  
**6.3/ 041** Dept. of Science + Technology: Shadow Lines [Author]  
**6.3/ 042** Dept. of Science + Technology: Basement entry [Author]  
**6.3/ 043** Australian Centre for the Moving Image: Lobby [Author]  
**6.3/ 044** Australian Centre for the Moving Image: Glass Detail [Author]  
**6.3/ 045** Australian Centre for the Moving Image: Glass Door in Lattice [Author]



6.3/005

**Programmatic 6.3/  
Education Facility**  
  
South Africa, Pretoria:  
*University of Pretoria Law Building*  
Architects: Kruger Roos

**Category:**  
University Campus Building

**Accommodation Schedule:**  
Lecture Venues  
Large Auditorium  
Library  
Study Centre  
Lecture Offices

**Design Features:**  
Circulation Strip  
Courtyards  
Efficiency in Access  
Visually Interactive Library Edge

The form of the building is derived from the function as an education facility. It has a number of components clipping onto a circulation strip, providing maximum access efficiently to lecture venues, with gathering spaces in the form of courtyards to accommodate students between lectures. The building faces onto a pedestrian avenue and locates its library with large windows to create a visual connection between people inside and those passing by. The circulation strip plays with the concept of inside-outside space and connects vertically through external stairways. Though the building is located on the University Campus the building plays with the idea of opening up onto internal courtyards so as to provide a safer and security controlled environment.

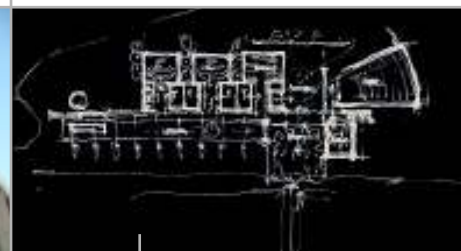
The management of student movement is an expressive quality in the above building and poses as inspiration in the following dissertation through spaces created and connection between inside and outside. The scale of the project and programme base is very similar to the following dissertation and poses a typical example for an educational facility.



6.3/006



6.3/007



6.3/008

**Programmatic 6.3/  
Education Facility**

South Africa, Pretoria:  
*University of Pretoria Law Building*

**Circulation Strip  
Courtyards**



6.3/009



6.3/010



6.3/011

**Illustrations/**

- 6.3/005 Uni. Of Pretoria Law Building: Elevation [Author]
- 6.3/006 Uni. Of Pretoria Law Building: Models [www.krugerroos.com 12/10/2006]
- 6.3/007 Uni. Of Pretoria Law Building: Conc. Detailing [Author]
- 6.3/008 Uni. Of Pretoria Law Building: Conceptual Sketch [www.krugerroos.com12/10/2006]
- 6.3/009 Uni. Of Pretoria Law Building: Circulation [Author]
- 6.3/010 Uni. Of Pretoria Law Building: Models [www.krugerroos.com 12/10/2006]
- 6.3/011 Uni. Of Pretoria Law Building: Models [www.krugerroos.com 12/10/2006]

# PRECEDENT STUDIES 6/ Programmatic 6.3/

## UNIVERSITY OF PRETORIA LAW BUILDING



6.3/ 012



6.3/ 013



6.3/ 015



6.3/ 017



6.3/ 014



6.3/ 016



6.3/ 018



6.3/ 019

### Programmatic 6.3/ Education Facility

South Africa, Pretoria:  
*University of Pretoria Law Building*  
Architects: Kruger Roos

**Category:**  
University Campus Building



6.3/ 020



6.3/ 021

### Accommodation Schedule:

- Lecture Venues
- Large Auditorium
- Library
- Study Centre
- Lecture Offices

### Design Features:

- Circulation Strip
- Courtyards
- Efficiency in Access
- Visually Interactive Library Edge

### Programmatic 6.3/ Education Facility

South Africa, Pretoria:  
*University of Pretoria Law Building*

### Circulation Strip Courtyards



6.3/ 022



6.3/ 023

### Links /

[www.krugerroosarchitects.co.za](http://www.krugerroosarchitects.co.za)

### Illustrations/

- 6.3/ 012 Uni. Of Pretoria Law Building: Circulation Strip [Author]
- 6.3/ 013 Uni. Of Pretoria Law Building: Roofing Detail [Author]
- 6.3/ 014 Uni. Of Pretoria Law Building: End of Circulation Strip [Author]
- 6.3/ 015 Uni. Of Pretoria Law Building: External Vertical Circulation [Author]
- 6.3/ 016 Uni. Of Pretoria Law Building: Fire Escapes [Author]
- 6.3/ 017 Uni. Of Pretoria Law Building: Back Entrance [Author]
- 6.3/ 018 Uni. Of Pretoria Law Building: Circulation Strip [Author]
- 6.3/ 019 Uni. Of Pretoria Law Building: Glass Façade connection inside + outside + revealing circulation of building [Author]
- 6.3/ 020 Uni. Of Pretoria Law Building: Fire Escapes as an expressive forms [Author]
- 6.3/ 021 Uni. Of Pretoria Law Building: Roofing as expressive element covering Circulation Strip [Author]
- 6.3/ 022 Uni. Of Pretoria Law Building: University Avenue Façade [Author]
- 6.3/ 023 Uni. Of Pretoria Law Building: Front Entrance [Author]



6.3/ 024

**Programmatic 6.3/  
Education Facility**

Japan, Fukui:  
*Fukui Prefectural Library + Archives*  
Architects: Fumihiko Maki

**Category:**  
Library and Archives

**Accommodation Schedule:**  
Book Storage  
Reading + Studying Areas  
Reflection Pool

**Design Features:**  
Courtyards  
Light Structure  
Openness to surrounding site

The Fukui Prefectural Library holds spaces ideal for educational activities with an understanding of connecting the inside with the outside. There is a definite appreciation of the environment with emphasis on glass curtain walls and courtyards to allow for interaction. The following dissertation intends to make use of courtyards to accommodate students between lectures to allow them the opportunity to interact with the outside when having a break. Light quality requirements are also similar for library space, study areas and computer venues. Essentially the programme of accommodating activities is the driver in the project to provide a high level of occupant comfort considering the activities held inside.

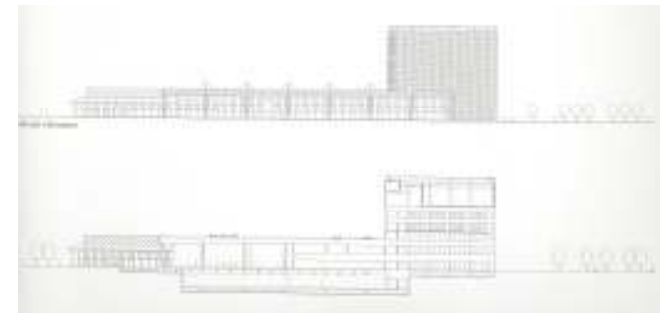


6.3/ 027

**Programmatic 6.3/  
Education Facility**

Japan, Fukui:  
*Fukui Prefectural Library + Archives*

**Courtyards  
Openness to Site**



6.3/ 028



6.3/ 025



6.3/ 026

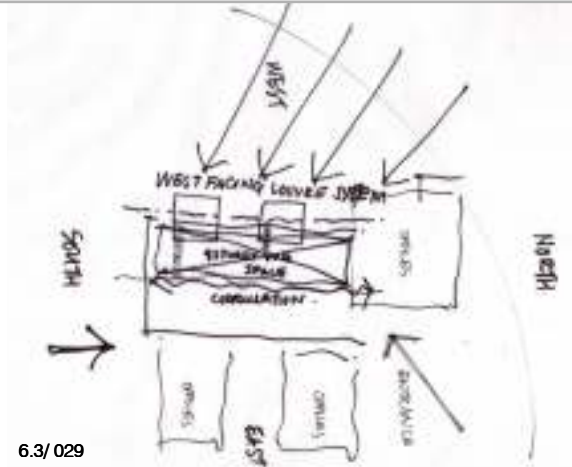
**Links /**  
[www.maki-and-associates.co.jp](http://www.maki-and-associates.co.jp)

**Illustrations/**

- 6.3/ 024 Fukui Library: Building [GA DOCUMENT 75, Oct 2003; Ada Editia, Tokyo, Japan]
- 6.3/ 025 Fukui Library: Connection to Outside from inside [www.maki-and-associates.co.jp 12/10/2006]
- 6.3/ 026 Fukui Library: Plans [GA DOCUMENT 75, Oct 2003; Ada Editia, Tokyo, Japan]
- 6.3/ 027 Fukui Library: Courtyard [GA DOCUMENT 75, Oct 2003; Ada Editia, Tokyo, Japan]
- 6.3/ 028 Fukui Library: Drawings [GA DOCUMENT 75, Oct 2003; Ada Editia, Tokyo, Japan]

# PRECEDENT STUDIES 6/ Programmatic 6.3/

CSIR\_DEPT. OF SCIENCE + TECHNOLOGY



6.3/ 029

The above building consists of office space, research facilities and services all connected via a 4 storey west facing enclosed space protected by a mechanical steel louvre system. This building manages the same design challenges in the following dissertation with circulation issues, security of the facility which still trying to connect with the outside and the location of specific spaces in relation to orientation. The site is located on the periphery of the city on a ridge and looks out over Pretoria with a large west facing edge capturing views. There is a strong attempt to connect the inside with the outside through visual connection with the use of mass glass curtain walling.



6.3/ 030



6.3/ 032



6.3/ 034



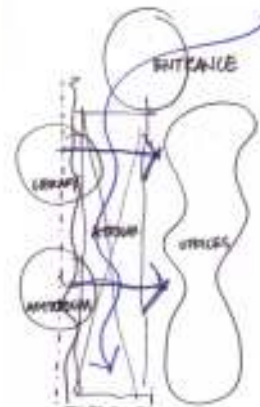
6.3/ 031



6.3/ 033



6.3/ 035



6.3/ 036

## Programmatic 6.3/ Education Facility

South Africa, Pretoria:  
Department of Science & Technology, CSIR  
Architects: Bild Architects

**Category:**  
Research Facility

**Accommodation Schedule:**  
Offices  
Auditorium  
Library  
Boardrooms  
Social Spaces



6.3/ 037



6.3/ 038

## Programmatic 6.3/ Education Facility

South Africa, Pretoria:  
Department of Science & Technology, CSIR

### Mechanical Louvre system Mass Glass Curtain Walling



6.3/ 039



6.3/ 040



6.3/ 042



6.3/ 041

### Illustrations/

- 6.3/ 029 Dept. of Science + Technology: Plan Sketch [Author]
- 6.3/ 030 Dept. of Science + Technology: Entrance [Author]
- 6.3/ 031 Dept. of Science + Technology: Façade Detail [Author]
- 6.3/ 032 Dept. of Science + Technology: Glass Curtain Wall [Author]
- 6.3/ 033 Dept. of Science + Technology: Glass Detailing [Author]
- 6.3/ 034 Dept. of Science + Technology: Steel Stair [Author]
- 6.3/ 035 Dept. of Science + Technology: Louver System [Author]
- 6.3/ 036 Dept. of Science + Technology: Circulation Sketch [Author]
- 6.3/ 037 Dept. of Science + Technology: Balconies [Author]
- 6.3/ 038 Dept. of Science + Technology: West Elevation [Author]
- 6.3/ 039 Dept. of Science + Technology: East Elevation [Author]
- 6.3/ 040 Dept. of Science + Technology: West Façade with Auditorium + Library [Author]
- 6.3/ 041 Dept. of Science + Technology: Shadow Lines [Author]
- 6.3/ 042 Dept. of Science + Technology: Basement entry [Author]



6.3/ 043



6.3/ 044



6.3/ 045



6.3/ 046



6.3/ 047



6.3/ 048



6.3/ 049



6.3/ 050

**Programmatic 6.3/  
Centers**

Australia, Melbourne  
*The Australian Centre for the Moving Image*  
Architects: LAB Architecture Studio in Ass. With Bates Smart

**Category:**

Media and Image [Moving Image]

**Accommodation Schedule:**

- Display and Exhibition Spaces
- Interactive Zone
- Cinema Theatres
- Sound Pods
- Recording Studios
- Archives for Media Clips

**Design Features:**

- Glass + Steel Lattice Shell Cladding
- Main Exhibition underground
- Disconnected visually from Federation Square



6.3/ 051

**Programmatic 6.3/  
Centres**

Australia, Melbourne  
*The Australian Centre for the Moving Image*

**Media and Image  
Main Exhibition underground**



6.3/ 052



6.3/ 053



6.3/ 054

**Links/**

- [www.federationsquare.com.au](http://www.federationsquare.com.au)
- <http://en.wikipedia.org>
- [www.acmi.com.au](http://www.acmi.com.au)

**Illustrations/**

- 6.3/ 043 Australian Centre for the Moving Image: Lobby [Author]
- 6.3/ 044 Australian Centre for the Moving Image: Glass Detail [Author]
- 6.3/ 045 Australian Centre for the Moving Image: Glass Door in Lattice [Author]
- 6.3/ 046 Australian Centre for the Moving Image: BMW Theatre Venue [Author]
- 6.3/ 047 Australian Centre for the Moving Image: Steel Detailing [Author]
- 6.3/ 048 Australian Centre for the Moving Image: Internal Space [Author]
- 6.3/ 049 Australian Centre for the Moving Image: Triple Volume Entrance [Author]
- 6.3/ 050 Australian Centre for the Moving Image: Distorted Glass Exit [Author]
- 6.3/ 051 Australian Centre for the Moving Image: Glass Balustrade [Author]
- 6.3/ 052 Australian Centre for the Moving Image: Lattice Shell [Author]
- 6.3/ 053 Australian Centre for the Moving Image: Lattice Shell [Author]

# PRECEDENT STUDIES 6/ Programmatic 6.3/

## APARTHEID MUSEUM



6.3/ 055



6.3/ 056

### Programmatic 6.3/ Museums

South Africa, Johannesburg:  
Apartheid Museum  
Architects: GAPP Architects  
+ Urban Designers

### Category: Historical

**Accommodation Schedule:**  
Display and Exhibition Spaces  
Exterior Theatre



6.3/ 064



6.3/ 065



6.3/ 066

### Programmatic 6.3/ Museums

South Africa, Johannesburg:  
Apartheid Museum

### Display and Exhibition Spaces



6.3/ 067

The Apartheid Museum is predominantly a display facility centred around the History of Race Discrimination with specific reflection on South African history. The layout of the building directs visitors through it and makes use of internal and external display. The brief includes a display ramp, display venues, an outdoor theatre and a reflection box. The Concrete box shown in illustration 6/ 068 plays with different size openings and light reflecting off water as in illustrations 6/ 061, 062, and 063.

The design of the building plays with the visitors emotions and controls levels of interaction with the outside through sizes of openings and materials used. Concrete is a very powerful raw material in this building and shows a true honesty to the material. This approach to materiality is the concept behind the following dissertation.



6.3/ 057



6.3/ 059



6.3/ 061

### Design Features:

- Starch and sterile texture
- Raw Concrete
- Linear Elements
- Continuous Route through Facility
- Constant Reflection
- Connection to Context



6.3/ 068



6.3/ 069



6.3/ 058



6.3/ 060



6.3/ 062



6.3/ 063



6.3/ 070

### Illustrations/

6.3/ 055 Apartheid Museum: Conc. Columns [Author]

6.3/ 056 Apartheid Museum: Sketch Plan [Author]

6.3/ 057 Apartheid Museum: Ramp of Reflection [Author]

6.3/ 058 Apartheid Museum: Conc. Columns + Reflection pool [Author]

6.3/ 059 Apartheid Museum: Brick Wall [Author]

6.3/ 060 Apartheid Museum: Concrete, Box [Author]

6.3/ 061 Apartheid Museum: Reflections from low window [Author]

6.3/ 062 Apartheid Museum: Reflection [Author]

6.3/ 063 Apartheid Museum: Reflection [Author]

6.3/ 064 Apartheid Museum: Reflection pool [Author]

6.3/ 065 Apartheid Museum: Conc. Forms [Author]

6.3/ 066 Apartheid Museum: Conc. Column [Author]

6.3/ 067 Apartheid Museum: Reflection pool [Author]

6.3/ 068 Apartheid Museum: Reflection ramp [Author]

6.3/ 069 Apartheid Museum: External View of Conc. Box with low windows [Author]

6.3/ 070 Apartheid Museum: External Display Ramp [Author]





MAROPENG VISITORS CENTRE



6.3/ 084



6.3/ 085



6.3/ 087



6.3/ 089



6.3/ 086



6.3/ 088



6.3/ 090

**Programmatic 6.3/  
Museums**

South Africa, Cradle of Humankind, Gauteng  
Maropeng Visitors Centre  
Architects: GAPP Architects

**Category:**  
Historical + Scientific

**Accommodation Schedule:**  
Display and Exhibition Spaces  
Interactive Zone

**Design Features:**  
Nestled into Landscape  
Underground Exhibition  
Circular mound Tower  
Concrete Fins creating tower  
Linear Circulation Route



6.3/ 091

**Programmatic 6.3/  
Museums**

South Africa,  
Cradle of Humankind:  
Maropeng Visitors Centre/

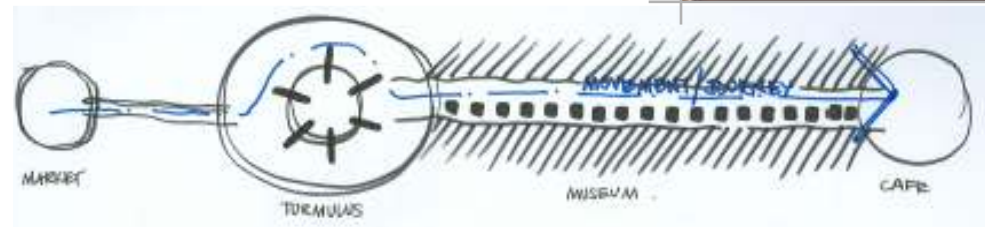
**Nestled into Landscape**  
**Concrete Fins**  
**Linear Circulation Route**



6.3/ 092



6.3/ 093



6.3/ 094

**Illustrations/**

- 6.3/ 084 Maropeng Visitors Centre: Internal Circulation [Author]
- 6.3/ 085 Maropeng Visitors Centre: Restaurant over looking view [Author]
- 6.3/ 086 Maropeng Visitors Centre: Length of Gallery underground [Author]
- 6.3/ 087 Maropeng Visitors Centre: End of Gallery Surfacing [Author]
- 6.3/ 088 Maropeng Visitors Centre: Base of Mound [Author]
- 6.3/ 089 Maropeng Visitors Centre: End of Gallery Wall + Circulation [Author]
- 6.3/ 090 Maropeng Visitors Centre: Gallery Wall [Author]
- 6.3/ 091 Maropeng Visitors Centre: Internal Circulation Route [Author]
- 6.3/ 092 Maropeng Visitors Centre: Connection to Landscape [Author]
- 6.3/ 093 Maropeng Visitors Centre: Internal Structure [Author]
- 6.3/ 094 Maropeng Visitors Centre: Sketch Plan [Author]