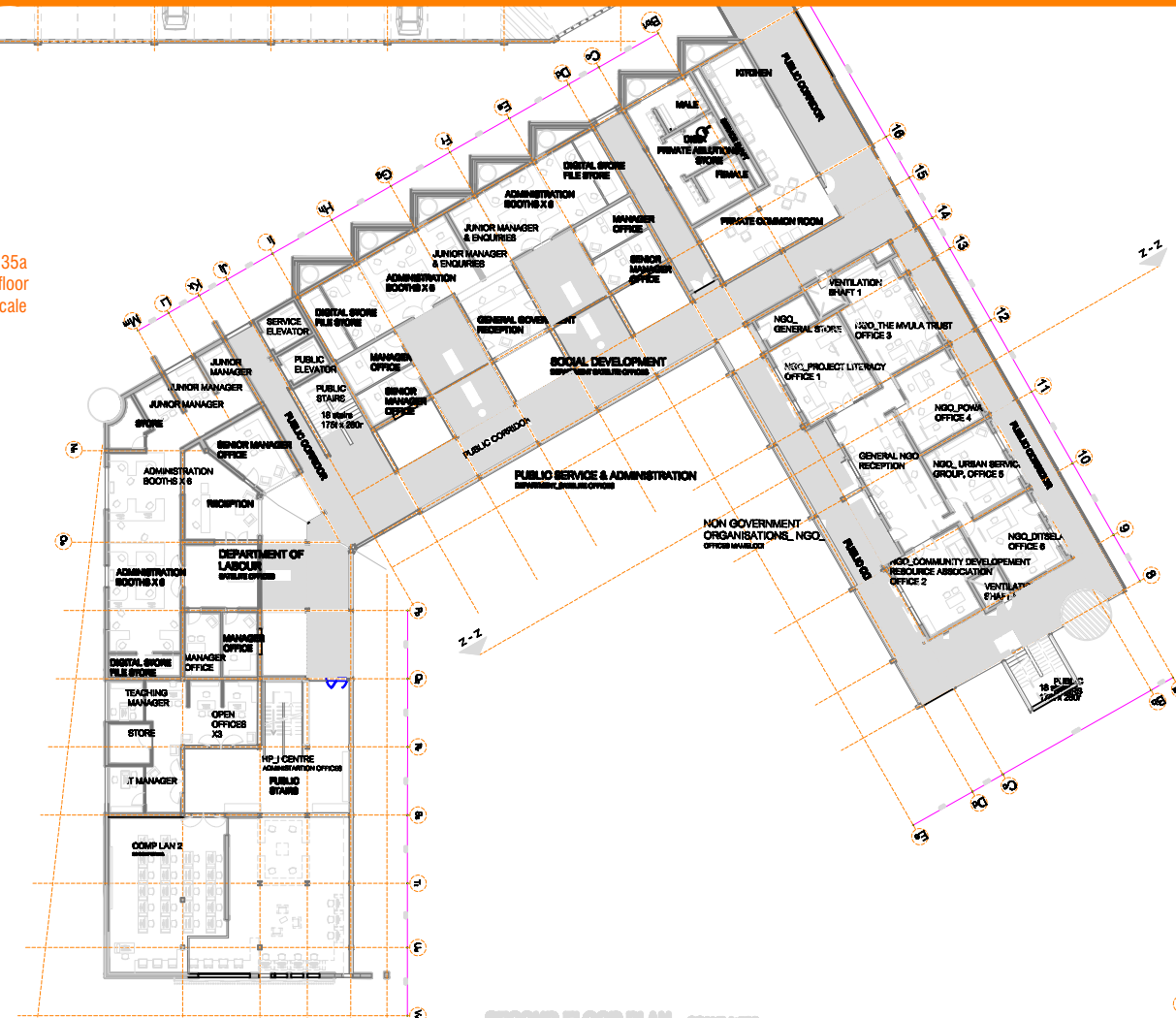


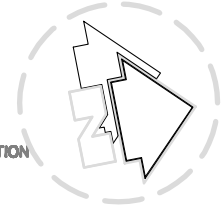
8.4_

Figure. 135a
Second floor
1: 500 scale



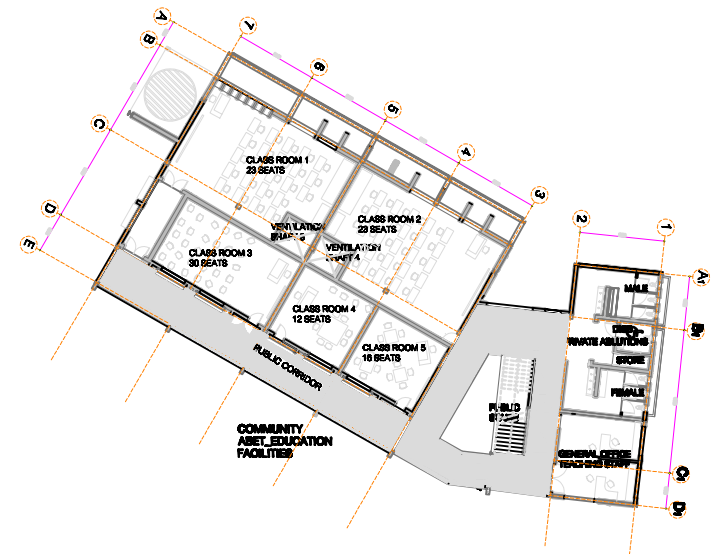
FLANK_B
GOVERNMENT_ MUNICIPAL PAY POINTS
MUNICIPAL OFFICES

NGO: DITSELA
URBAN SERVICE GROUP
POWA
THE MVULA TRUST
PROJECT LITERACY
COMMUNITY DEVELOPMENT RESOURCE ASSOCIATION



FLANK_A

COMMUNITY : ABET EDUCATION
SECTOR MEETING ROOMS
LEGAL AID OFFICE
INFORMATION AND TOURISM
COMMUNITY SECTORAL & ADMIN OFFICES
COMMUNITY WARD COUNCELOR OFFICES
BUSINESS FACILITIES_HOT DESKING_
PUBLIC CONFERENCE FACILITY

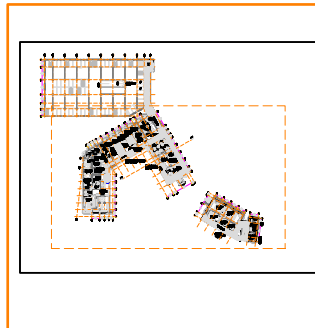


FLANK_C

HOME AFFAIRS_ PUBLIC SERVICE FACILITY
HOME AFFAIRS PUBLIC SATELITE OFFICES
COMMUNITY: UNIVERSITY OF PRETORIA – e-LIBRARY
hp E-CENTRE, EDUCATION
GOVERNMENT: DEPARTMENT OF LABOUR SATELITE OFFICES
DEPARTMENT OF SOCIAL DEVELOPMENT SATELITE OFFICES
DEPARTMENT OF PUBLIC SERVICE AND ADMINISTRATION SATELITE OFFICES
UNIVERSITY OF PRETORIA: SOCIAL RESEARCH CENTRE.
DEPARTMENT OF SOCIAL WORK AND CRIMINOLOGY RESEARCH LABORATORIES
DEPARTMENT OF SOCIOLOGY_COMMUNITY SERVICE AND SOCIAL TRANSFORMATION RESEARCH LABORATORIES
IN-HOUSE: STORAGE FACILITIES
CLEANING FACILITIES
DELIVERY FACILITIES
RETAIL POSTNET

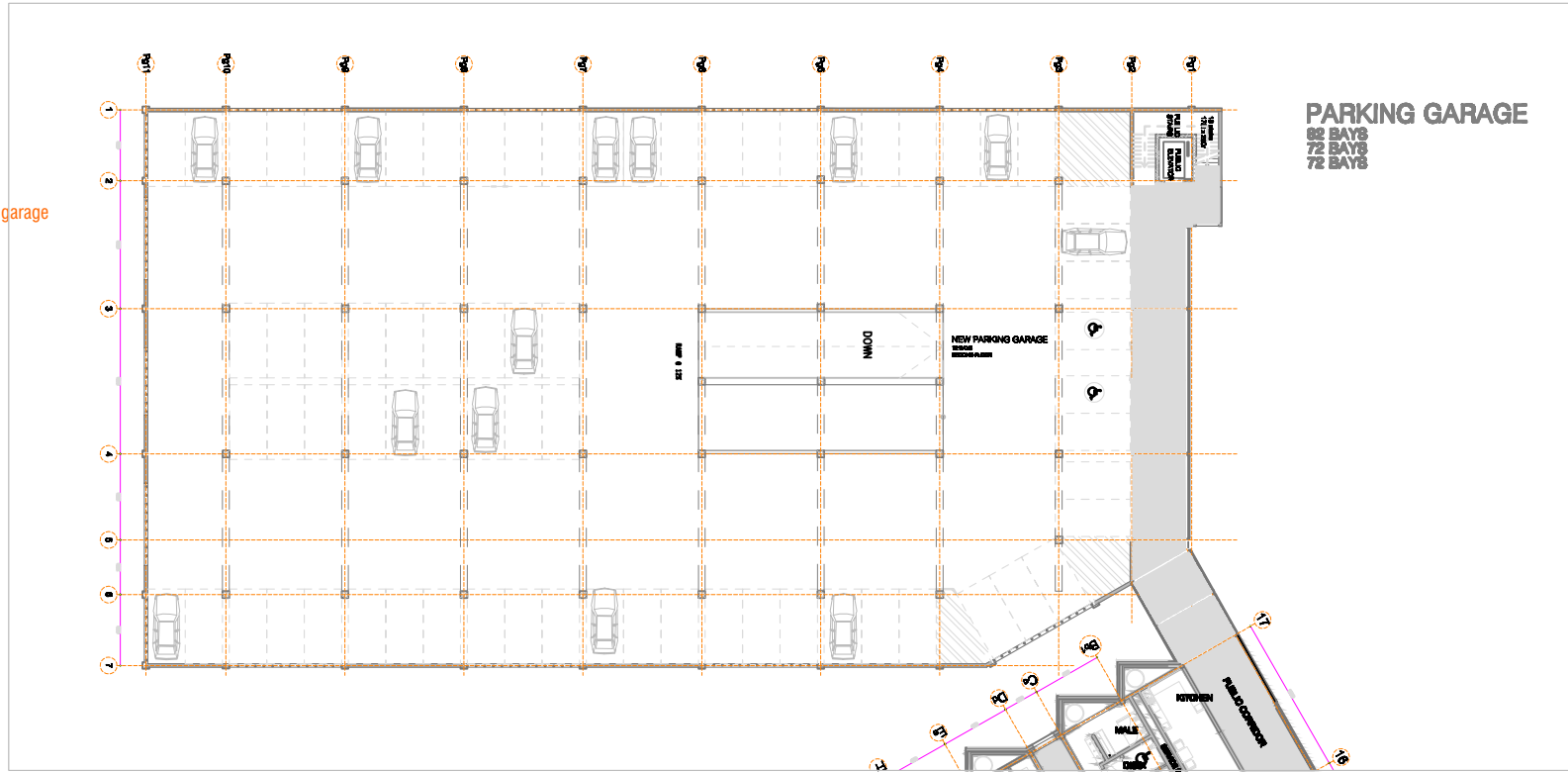
SECOND FLOOR PLAN

DATE: 10.08.2008	SCALE: 1:200 @ A1
DRAWN BY: Jolene Ntsho	CHECKED BY:
APPROVED BY:	CHECKED DATE:
SITE DESCRIPTION: University of Pretoria Hans Ruyters, ERF 28502 Mamelodi	
DRAWING TITLE: COMMUNITY ENGAGEMENT FACILITATOR SECOND FLOOR PLAN	
PROJECT No: 1_Master Architecture dissertation 2008_ University of Pretoria	
DRAWING No: MARCH UP_PLAN_001_P01A_ 2008	REV. C



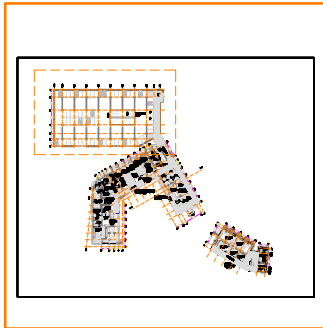
8.4.1_

Figure. 135b
Second floor garage
1: 500 scale



SECOND FLOOR GARAGE SCALE 1:500

DATE: 18.08.2008	SCALE: 1:500 @ A4
DRAWN BY: John Nkomo	CHECKED BY:
APPROVED BY:	CHECKED DATE:
SITE DESCRIPTION: University of Pretoria Hans Beyers, ESF 20082 Mamelodi	
DRAWING TITLE: COMMUNITY ENGAGEMENT FACILITATOR SECOND FLOOR GARAGE PLAN	
PROJECT No: 1_Mamelodi Architecture dissertation 2008_University of Pretoria	
DRAWING No: MArch UP_PLAN_001_P01A. 2008	REV: C



COMMUNITY ENGAGEMENT FACILITY
MAMELODI_CIVIC AND COMMUNITY SERVICE TECHNICAL SUBMISSION