

DRW.: GROUND FLOOR LAY OUT

FOORD GERONIO
 75 422 591



TO THE
MAIN
CAMPUS

EXIST. DANCE DEPT.

SQUARE
BELOW

PATIO
BELOW

RESTAURANT

DOUBLE
VOLUME

KITCHEN
BELOW

SQUARE
BELOW

VERANDAH
BELOW

STAGE

FIRST FLOOR RESTAURANT

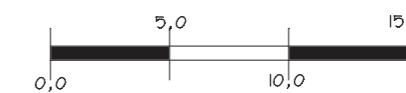
MAIN
SQUARE
BELOW

GARDEN

OPEN COURT YARD SCULPTURE EXHIBITION AREA
BELOW

FIRST FLOOR GALLERY

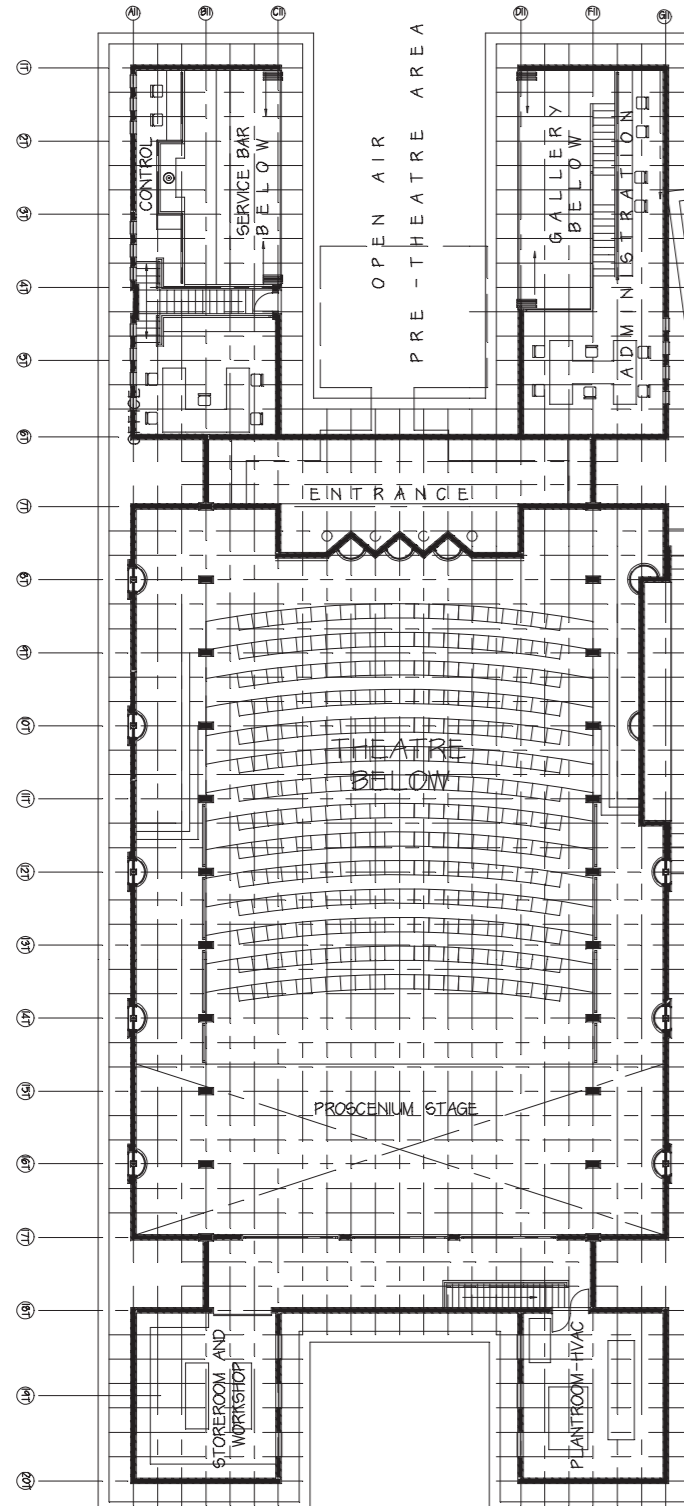
SQUARE
BELOW



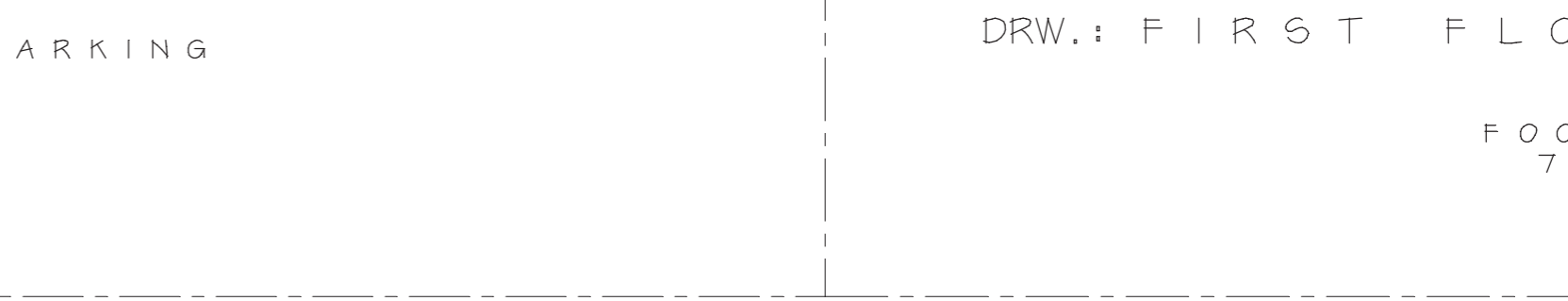
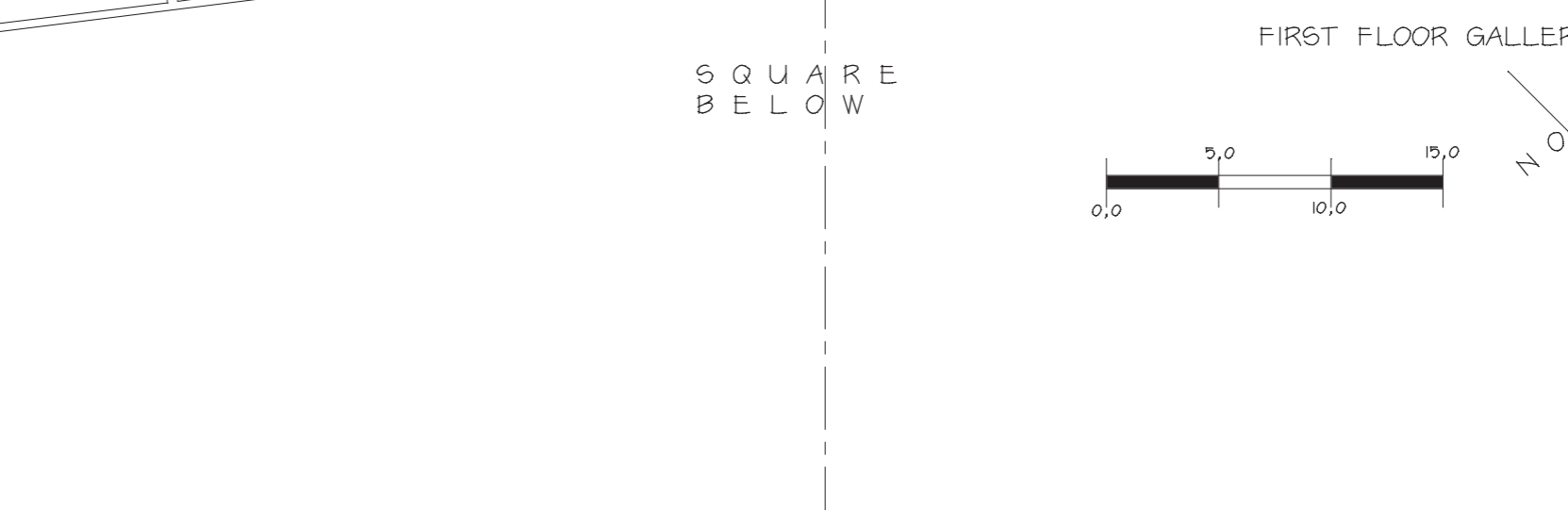
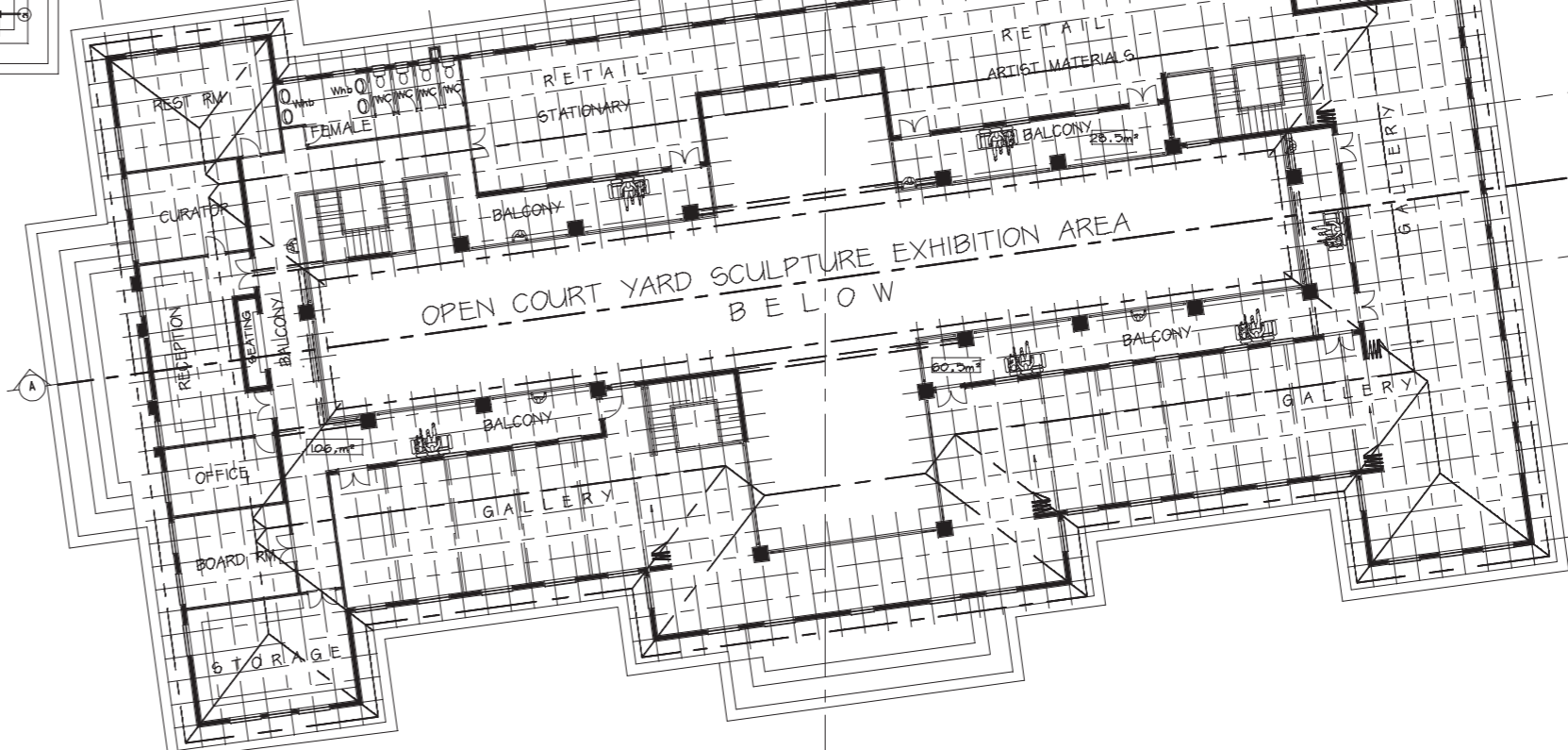
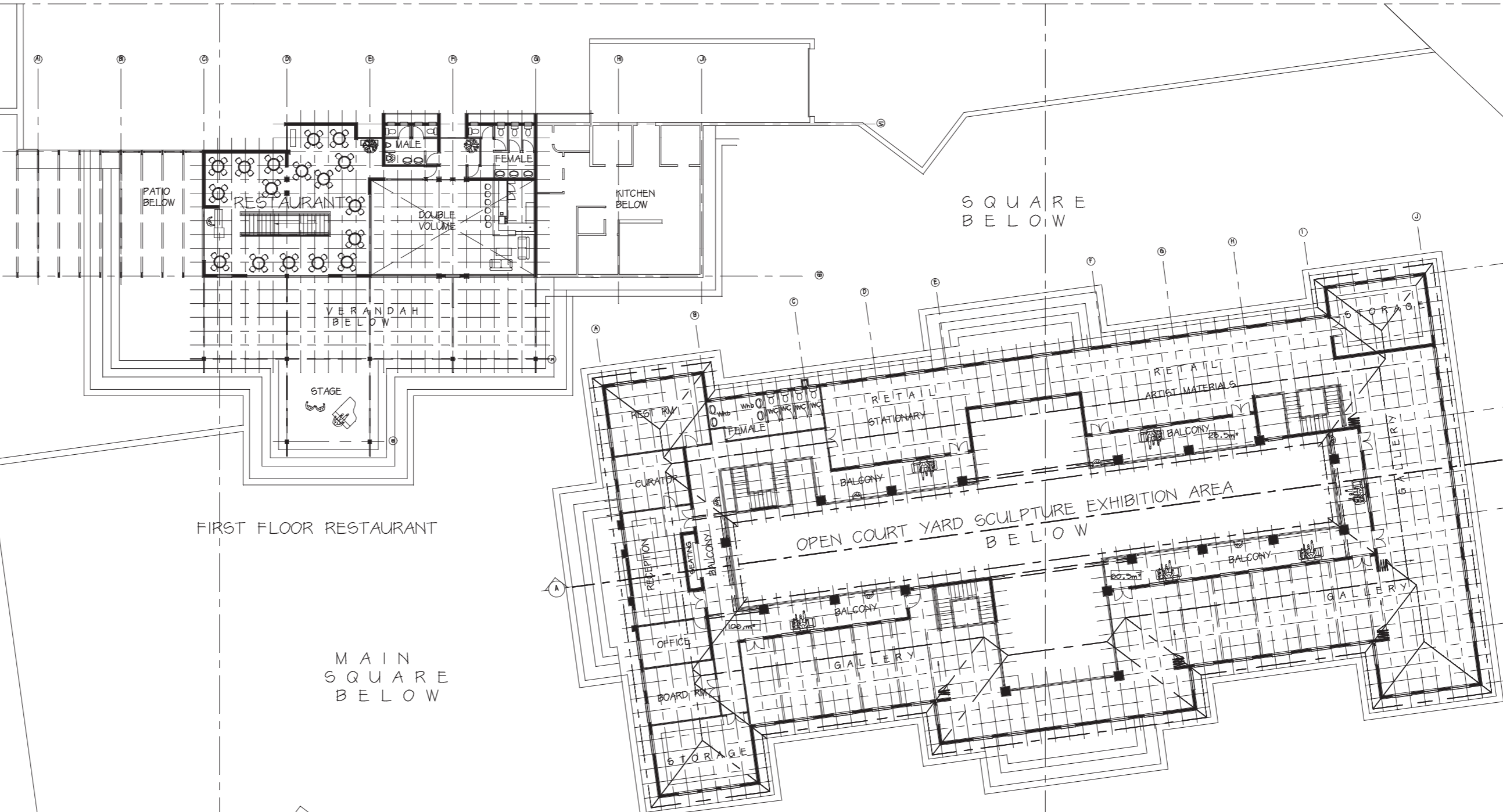
PARKING

DRW.: FIRST FLOOR LAY OUT

FOORD CERONIO
75 422 591



FIRST FLOOR THEATRE





MASONRY:

SANDSTONE DETAIL AT THE NEW MAIN WESTERN ENTRANCE TO MATCH THE DETAIL AT THE EXISTING NORTHERN ENTRANCE. THE APPLIED AND FORMED STONE TO BE LAID (AS A FACING) INTO THE BRICKWORK, SIMILAR TO 'ASHLAR' MASONRY FORMAT. ASHLAR FACING MUST MATCH THE EXISTING AND CAN BE CHAMFERED AND REBATED. THE BEDDING MUST MATCH THE BACKING BOND BEDDING TO ENSURE QUALITY OF SETTLEMENT.

GUTTERS:

EAVES GUTTERS MUST BE OF COMMERCIAL GRADE STEEL SHEET WITH CLASS 2275 GALVANISING TO COMPLY WITH SABS 934:1 WITH BEADED EDGES ANGLES STOPPED ENDS AND OUTLET NOZZLES TO THE SIZE: SQUARE 125 X 125 LAY GUTTERS IN GALVANISED MILD STEEL BRACKETS AS STATED IN ROOF NOTES. FIX DOWNPIPS AT LEAST TWICE TO COLLARS WITH BEAM AT THE BRICK AND 25mm FROM POST.

BARGE BOARDS AND FASCIAS MUST BE FIBRE CEMENT SHEETS; SCREW FASCIA TO THE TILTING BATTENS OR THE VERGE BATTENS.

DAMP PROOF

0.25mm SMOOTH GREEN POLYOLEFIN DAMP-PROOF MEMBRANE TO COMPLY WITH SABS 9152 TYPE-C. LAY MEMBRANE UNDER SURFACE BED, AND FOLD IT UP AGAINST THE FOUNDATION WALL. LAY MEMBRANE IN LARGEST POSSIBLE SIZES WITH 200mm OVERLAPS. ANY JOINTS SHALL BE SEALED WITH PRESSURE SENSITIVE TAPE APPLIED OVER THE LEADING POINT.

POISON

IF THERE IS EVIDENCE OF TERMITES, THE SOIL SHALL BE POISONED WITH AN APPROVED REGISTERED POISON. A CLEARANCE CERTIFICATE IS TO BE SUBMITTED.

SMOOTH

USE SAND, FINE GRAVEL TO FILL VOIDS AND PROVIDE A CLOSE SMOOTH SURFACE.

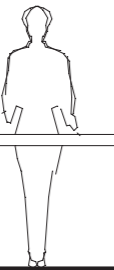
FILLING

FILLING UNDER SURFACE BED OF CLEAN GRAVEL, EARTH AND SAND, FREE OF CLAY AND ORGANIC MATTER - WELL WATERED AND RAMMED IN LAYERS OF NOT MORE THAN 150MM.

FOUNDATIONS

FOUNDATION WALLS SHALL BE SOLID MASONRY, SOLID OR FILLED CONCRETE BLOCKS (OR HARD BURNT CLAY BRICKS). HEIGHT OF ANY FOUNDATION WALL NOT TO EXCEED 1.0 METER - TO BE DESIGNED BY THE ENGINEER.

ADMINISTRATION



ENTRANCE

SECTION

REINFORCED FOUNDATIONS TO THE ENGINEER'S DETAILS WITH ARTICULATION JOINTS AT ALL INTERNAL/EXTERNAL DOORS AND OPENINGS, LIGHT REINFORCEMENT IN MASONRY.

ENTRANCE AT THE GALLERY



ROOF NOTES:

COLOURED CHROMADEK CORRUGATED GALVANISED IRON, ROOF FINISH

PRE-PAINTED GALVANISED STEEL: COLOURED CHROMADEK 0.6MM THICK MILD STEEL WITH CLASS 2275 GALVANISING PRIMED WITH AN EPOXY-BASED PRIMER AND PAINTED WITH SILICON POLYESTER PAINT.

ENSURE THAT GUTTER BRACKETS AND GUTTERS ARE INSTALLED BEFORE LAYING ROOF SHEETS.

METAL FLASHING MUST BE OF 0.6MM COMMERCIAL GRADE STEEL SHEET AND PRE-PAINTED TO MATCH THE ROOF SHEETS.

76x100MM S.A. PINE BATTENS @ 1000MM C/C PREFABRICATED TRUSSES AND BRACING MUST BE DESIGNED BY A COMPETENT PROFESSIONAL ENGINEER. RAFTER CONSTRUCTION FROM 192 X 38MM S.A. PINE WITH 14 X 38 STRUTTING @ 1000MM C/C OR AS SPECIFIED.

ON 228 X 76MM LAMINATED S.A. PINE BEARER BEAM FIXED TO COLUMNS - BEAM DESIGN BY THE ENGINEER. ALL TIMBER TO BE SABS GR 6.

(TIMBER RAFTERS TO BE FACTORY MANUFACTURED UNDER SUPERVISION OF THE ENGINEER)

MASONRY

CLAY BRICKS

CLAY BRICKS MUST CONFORM TO SABS 2271:1 FACE BRICKS MUST BE CLASS 195, FIX OR FBA AS SPECIFIED, OR TO MATCH EXISTING FACE BRICKS, WITH A MINIMUM COMPRESSIVE STRENGTH OF 17 MPA. COMMON BRICKS MUST BE CLASS NFP WITH A MINIMUM COMPRESSIVE STRENGTH OF 7 MPA FOR GENERAL SINGLE-STORY WORK; CLASS NFX WITH A MINIMUM COMPRESSIVE STRENGTH OF 10.5 MPA FOR DOUBLE STOREY STRUCTURAL WALLS, FREE-STANDING WALLS AND RETAINING WALLS. GRADE OF EFFLORESCENCE: STANDARD GRADE FOR INTERNAL WALLS THAT WILL NOT BECOME DAMP; SPECIAL GRADE FOR VISIBLE UNPLASTERED FOUNDATION WALLS.

PROOF OF QUALITY: DESPATCH OR CONSIGNMENT NOTES OF BRICKS AND BLOCKS DELIVERED TO SITE MUST STATE THE SPECIFIED REQUIREMENTS AND MUST BE KEPT OR SHOWN WHEN REQUESTED BY THE ARCHITECT/PRINCIPAL AGENT.

SAMPLES: SUPPLY A SAMPLE OF 20 CLAY FACE BRICKS AND SIX OF EVERY OTHER TYPE OF CLAY BRICK FOR APPROVAL. SUPPLY ONE SAMPLE OF EVERY TYPE OF CONCRETE BLOCK. KEEP THESE UNITS ON SITE FOR REFERENCE.

STORAGE: UNLOAD BRICKS AND BLOCKS CAREFULLY TO PREVENT CHIPPING AND BREAK-AGE. STACK ON PREPARED LEVEL AREAS AND PROTECT FROM STAINING OR MARKING.

0.375mm SABS 952 UNDER WINDOW SILLS IN THICKNES OF WALL AND UNDER FIRST FULL COURSE OF MASONRY. NOT JUST IN THE BEDDING MATERIAL DIRECTLY BELOW THE CILL. BRICK ON EDGE EXTERNAL WINDOW CILL.

FLOOR: FINISHES AS INDICATED ON PLAN. 25mm CEMENT SCREED. 75mm THICK 13 MPA CONCRETE SURFACE BED. CAST IN 200 X 200 X 4 WELDED STEEL MESH NEAR TOP OF SURFACE (USE LARGE MATS WITH 300mm OVER LAPS).

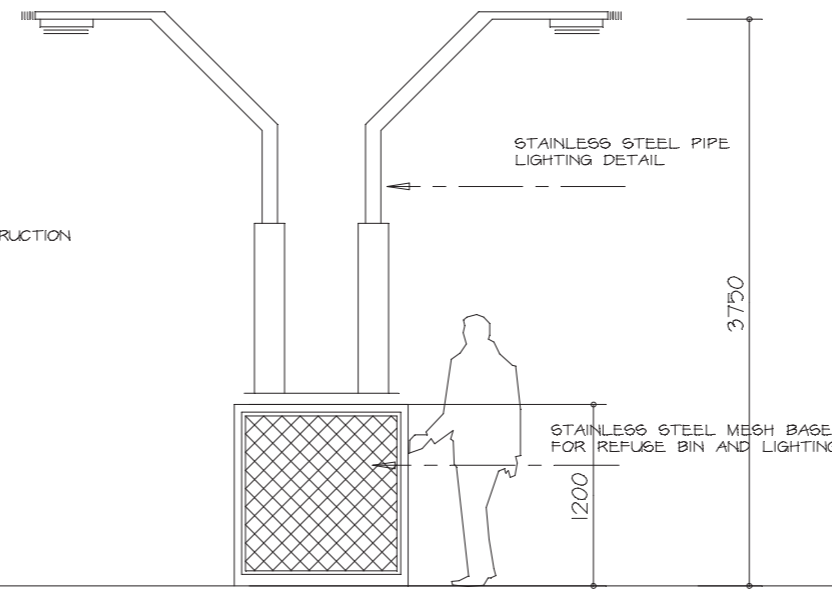
DAMP-PROOF COURSE: DAMP PROOFING SHALL BE PLACED UNDER ALL WALLS AT A MIN HEIGHT OF 150MM ABOVE NATURAL GROUND LEVEL AND MUST COMPLY WITH SABS 9152 - B - POLYOLEFIN SHEET WATERPROOFING FOR STRUCTURE, 375 MICRONS EMBOSSED LAY IN UNJOINTED LENGTHS AND WITH FULL CORNER LAPS.

MACHINE MIX CONCRETE IN PROPORTIONS BY VOLUME, CONCRETE NO WEAKER THAN 1 PART 42.5 PORTLAND CEMENT TO 3 PARTS CLEAN DRY SAND TO 6 PARTS COARSE AGGREGATE, AGGREGATE FROM 140 TO 28.50 mm.

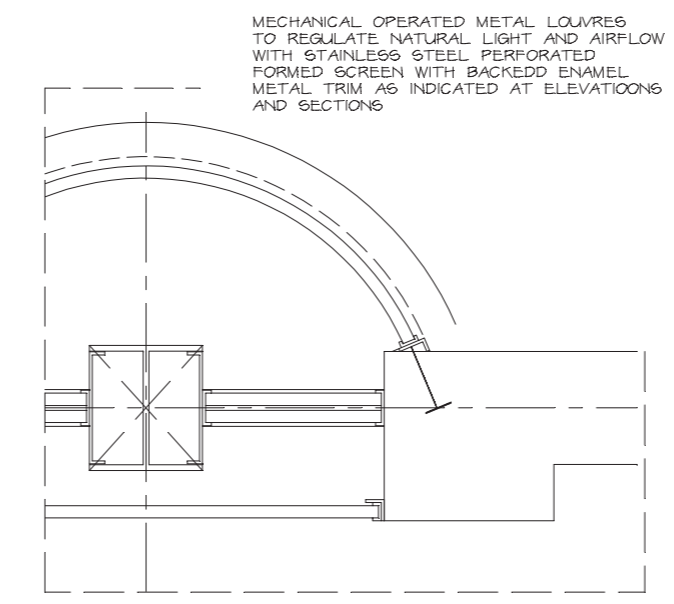
CONCRETE SHALL HAVE A COMPRESSIVE STRENGTH NO LESS THAN 10 MPA AT 28 DAYS.

SOIL TESTS AND DENSITY TEST WILL BE UNDER THE SUPERVISION OF THE ENGINEER.

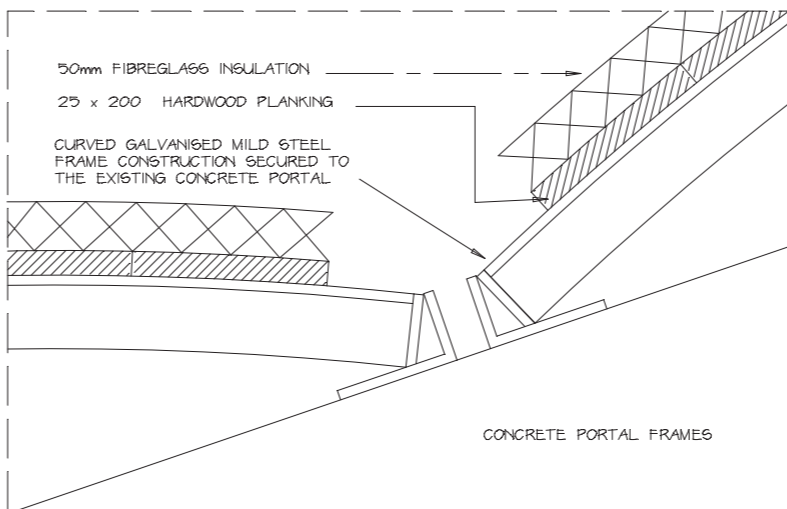
ALL REINFORCED CONCRETE IN ACCORDANCE WITH DESIGN AND SPECIFICATION OF PROFESSIONAL ENGINEER.



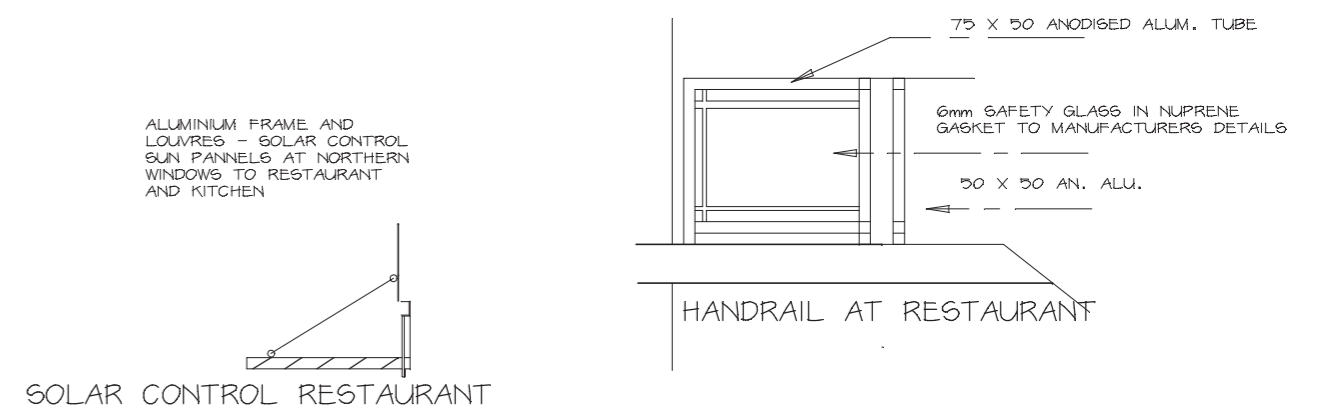
SQUARE LIGHTING



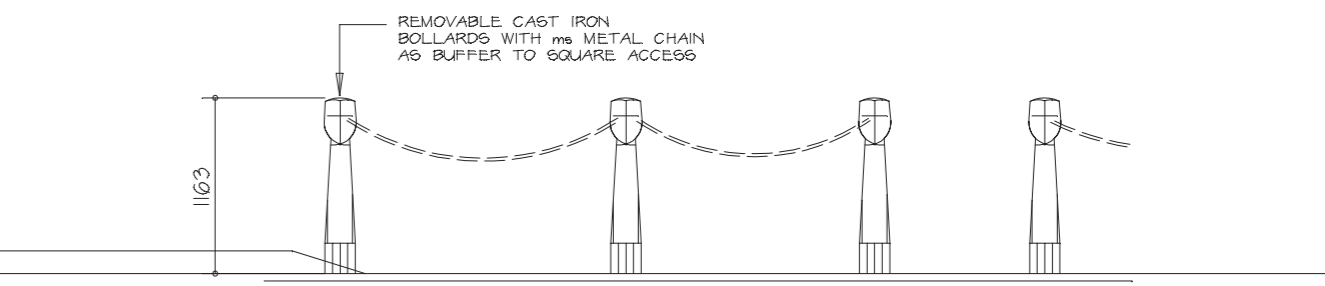
LOUVRE DETAIL: THEATRE



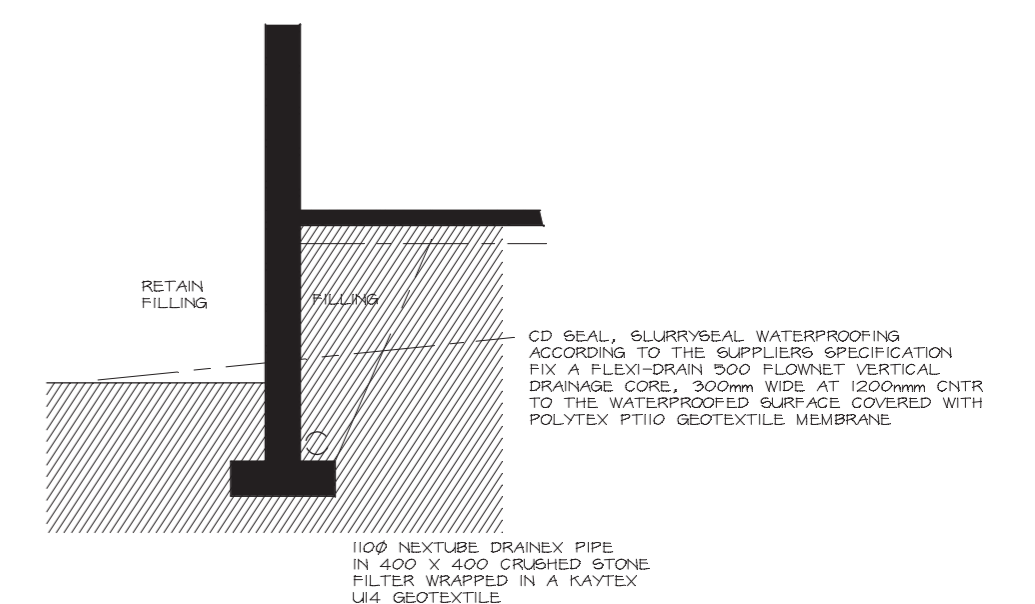
ACOUSTIC CEILING THEATRE



SOLAR CONTROL RESTAURANT



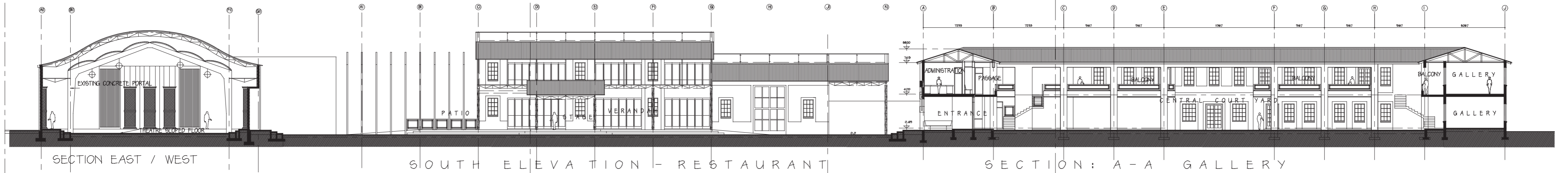
BOLLARDS



FILLING AT RESTAURANT

DRW.: DETAIL
SECTIONS
& ELEVATIONS

F O O R D C E R O N I O
7 5 4 2 2 5 9 1



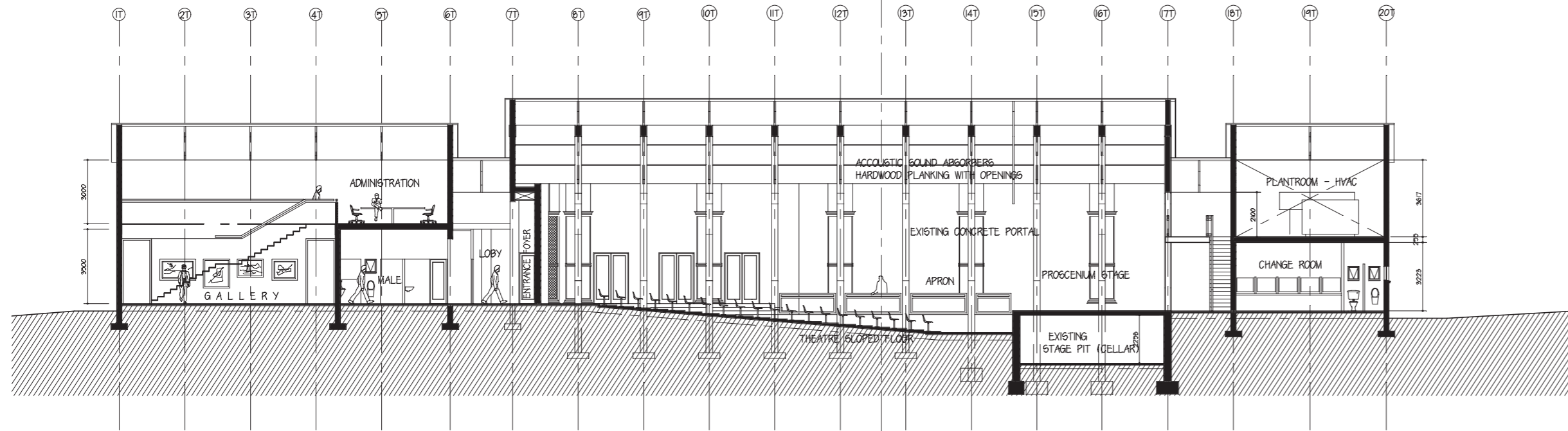
DRW.: SECTION EAST / WEST

FOORD CERONIO
75 422 591

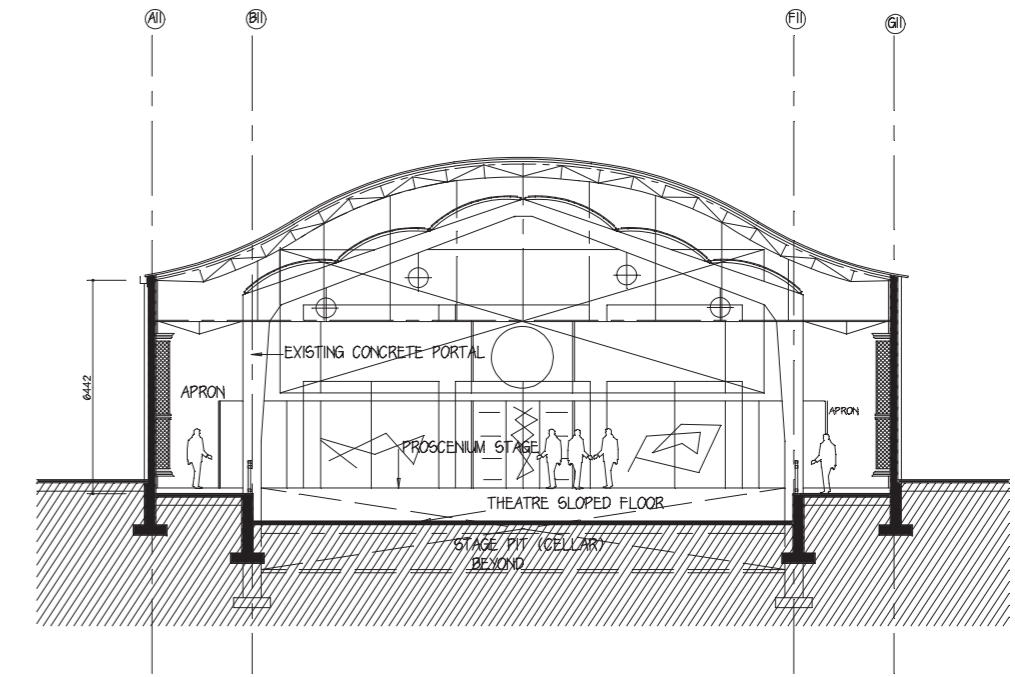


DRW.: SECTION NORTH / SOUTH

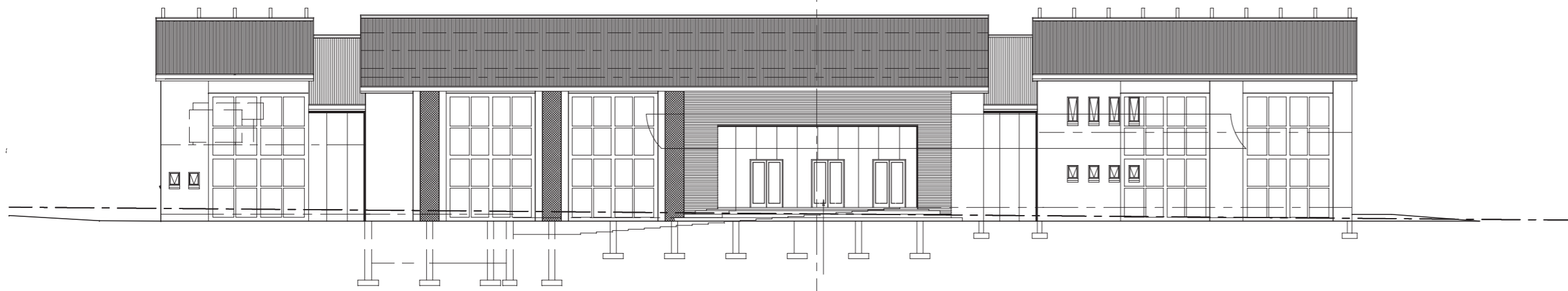
FOORD CERONIO
75 422 591



SECTION NORTH / SOUTH



SECTION EAST / WEST



EAST ELEVATION THEATRE

DRW.: SECTIONS THEATRE

FOORD CERONIO
 75 422 591