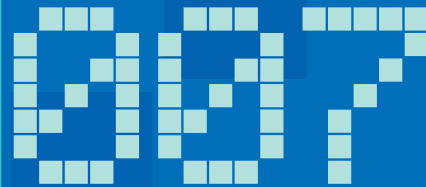




UNIVERSITEIT VAN PRETORIA
UNIVERSITY OF PRETORIA
YUNIBESITHI YA PRETORIA



DESIGN D



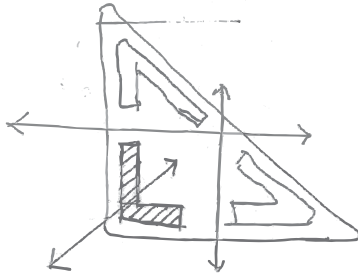
EVELOPMENT

Exploration of ideas, concepts and themes_

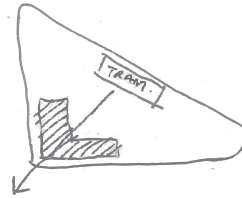
- > Urban relationships_
- > Design concepts + themes_
- > Development timeline_

>site Plan

- Integration with surrounding functions



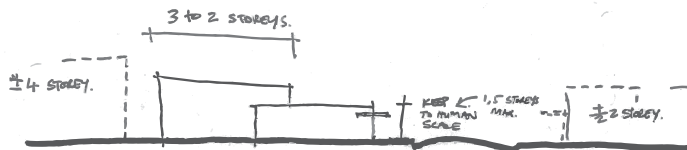
- Tram stop to increase pedestrian traffic on site



- ALLOW FOR ACCESS THROUGH BUILDING
- 1. CONVENIENCE
- 2. TRADE
- 3. AWARENESS

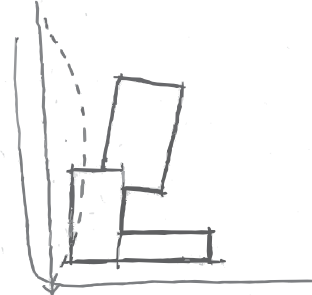
- CREATION OF PUBLIC SQUARE THAT LINKS TO OTHER ACCESS ROUTES SEE GRP FRMWR.

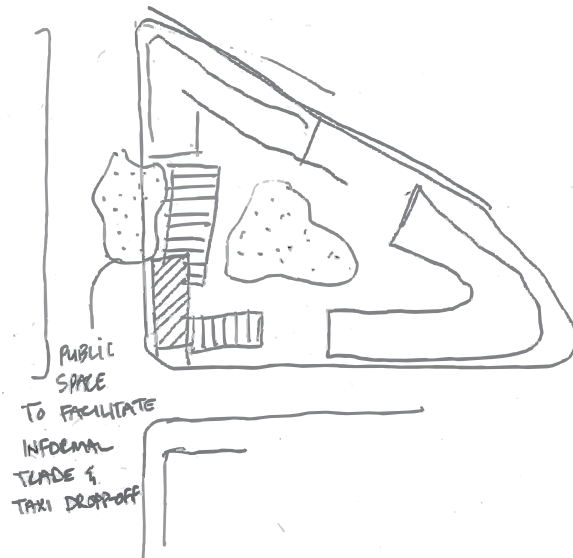
- Response to surrounding buildings



BRING DOWN THE SCALE OF BIG NEIGHBOURHOODS DOWN TO THAT OF EXISTING ON OPPOSITE CORNER.

- Continuation of pedestrian movement





>>Create a hierarchy of public spaces_

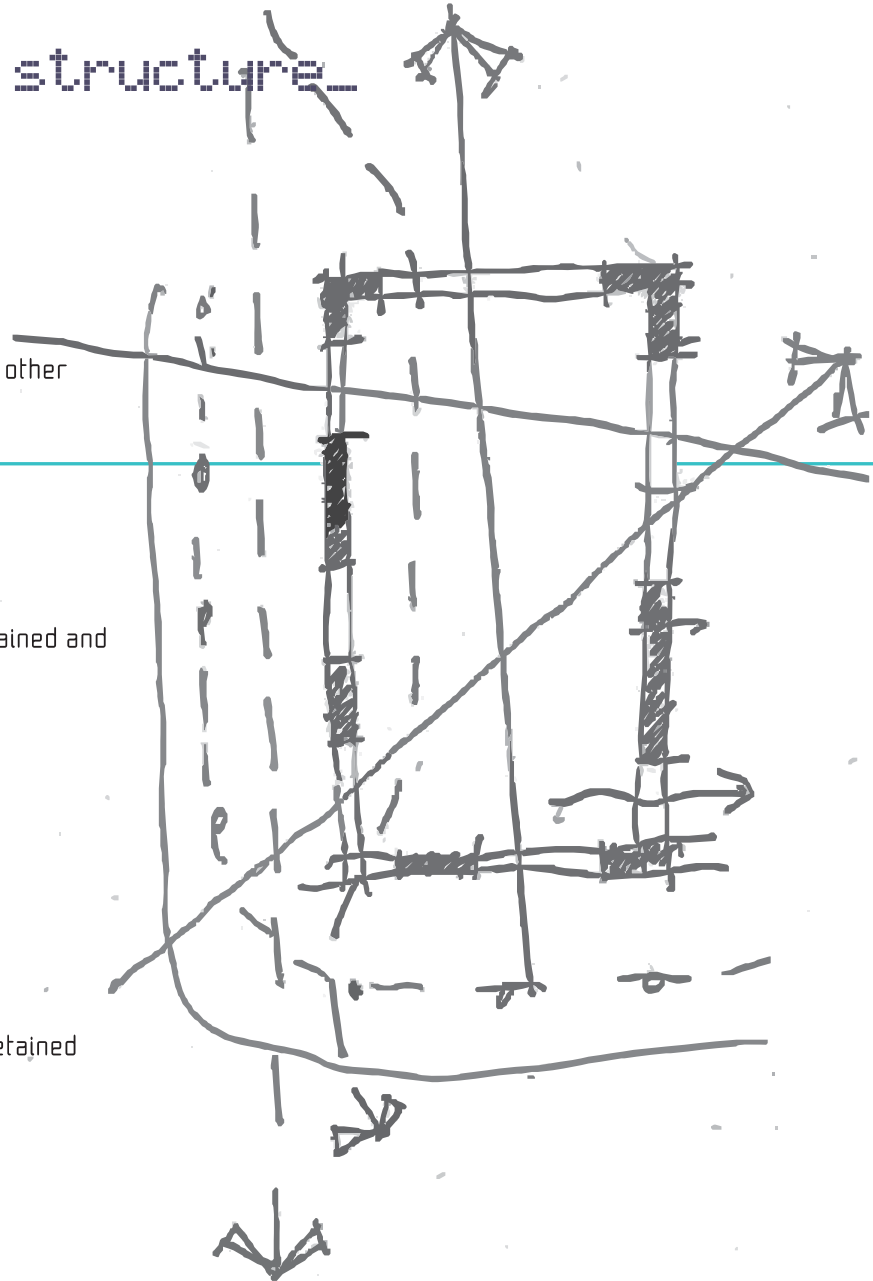
The design aims to create space that can be used by the public. The public square is the most obvious way of achieving this objective, and it opens up the site to pedestrian activity. On the square, changes in level and floor finishes are introduced to the user, and different views frame the development.

Along the west and south facades the design incorporates existing uses. An enlarged area for taxi pick-up and drop-off activities together with informal spaces for trade is, envisioned. These spaces are defined in such a manner so as to allow high levels of interaction with the street.



>existing structure_

- The existing generator for other programmes_
- The existing colonnade retained and extended into the design_
- The existing structure is retained wherever possible_





①

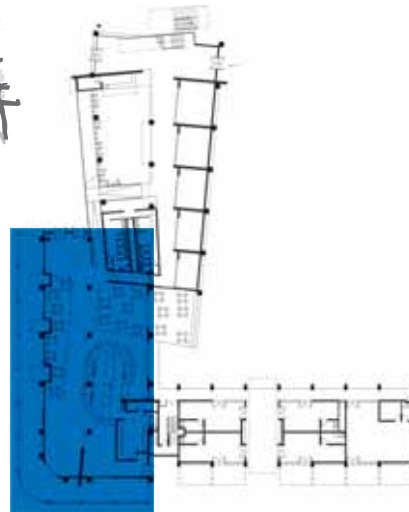
EXISTING
STRUCTURE

WALLS
&
PROFILES
UNCOVERED

- Expose shell and structure of existing building to communicate the structural order.

- Puncture existing walls with openings, to increase permeability.

PORTION OF
EXISTING STRUCTURE
BECOMES PART
OF PUBLIC SIDEWALK.

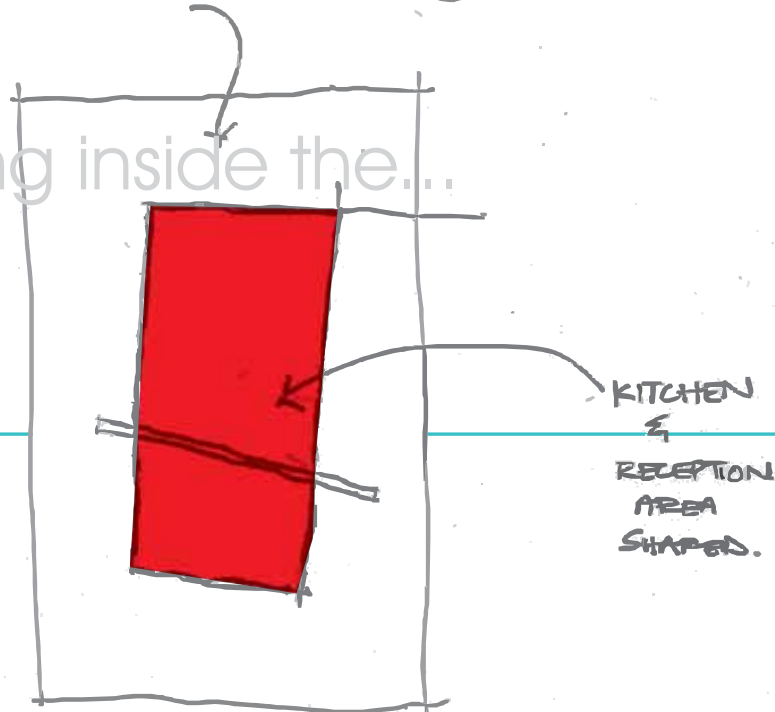




THINKING INSIDE THE BOX!

BOX IN A BOX. (2)

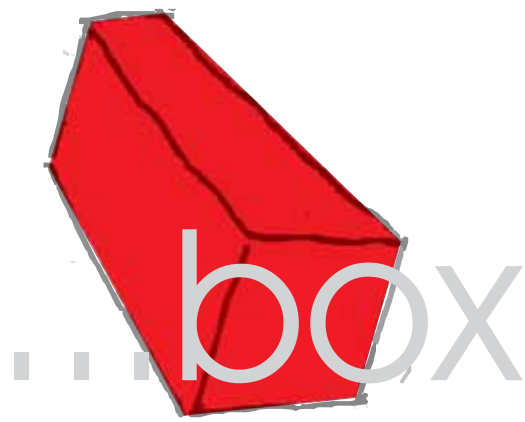
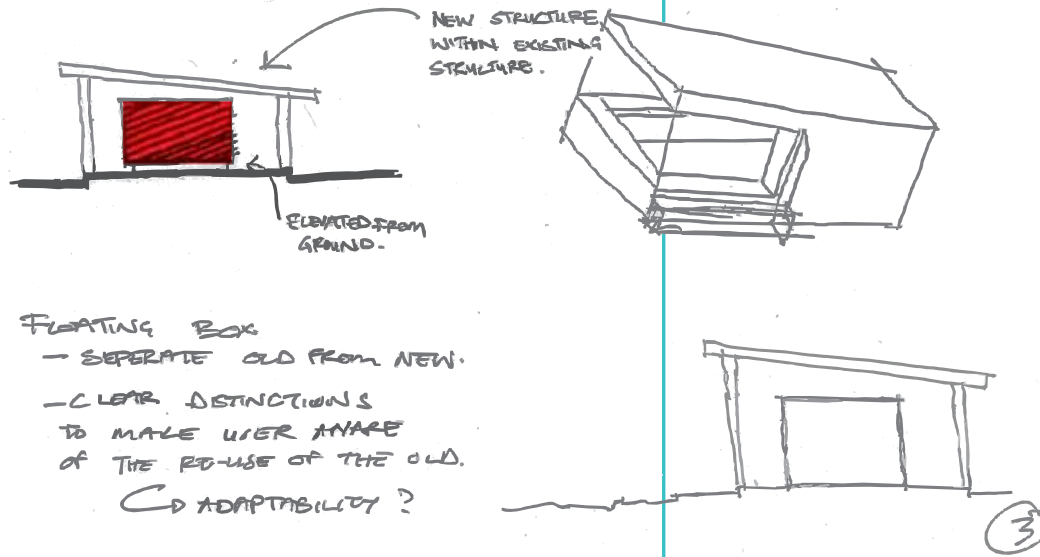
thinking inside the...



>Initial Programmatic ideas for the
existing building.

- Reception.
- Coffee shop/ bar/ etc.
- Public access from Prinsloo street
facade and into proposed square.

+ SEE INSTALLATION
TYPE BUILDINGS.
ASSAYE



>Materials_

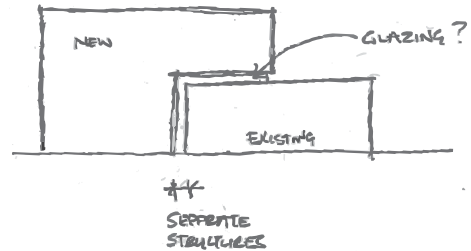
- Contemporary materials_
- Glass-reinforced plastics/ polycarbonate_
- Steel_
- Aluminium_
- Concrete_
- Existing materials are retained where possible_



>digital media school and exhibition space_

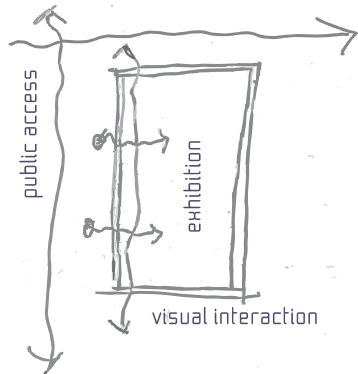
- .To showcase digital media and technology_
- .To promote awareness of technology_
- .To educate_
- .To involve_

.New to be separated from existing_

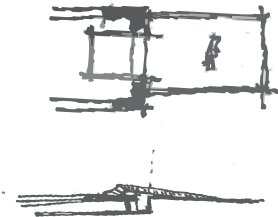


thinking outside the...

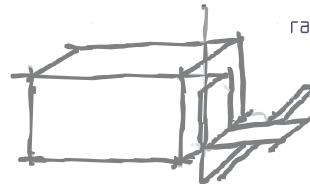
.Internet cafe and exhibition area to be integrated into one space to facilitate awareness of activities_



.Public accessibility and visibility from exterior_



ramp threshold overlaps and floats

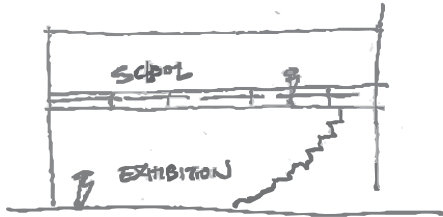


threshold from old to new

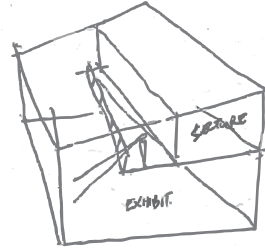
Lecture theatres as tv boxes
allowing visual interaction
from the outside



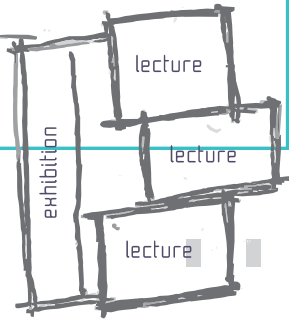
.School accommodation on upper floors_



.School to overlook exhibition area_

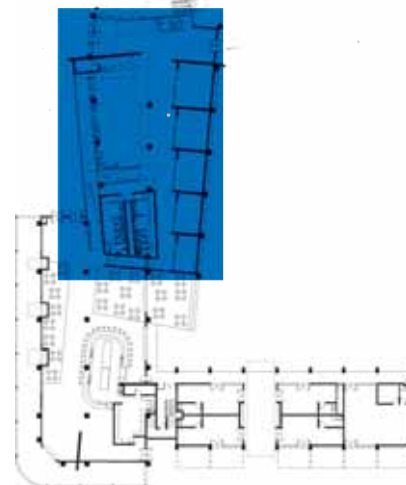
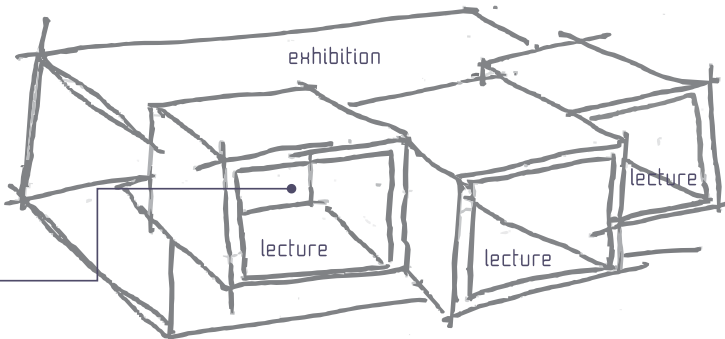


OUTSIDE OF THE BOX



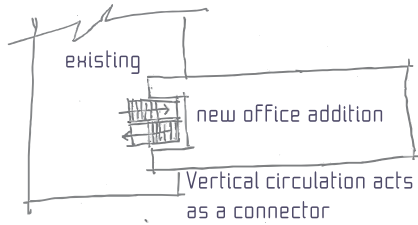
- 3-4 lecture/classrooms hosting 20-40 students each_
- A multi-functional approach, allowing spaces to be used as studios, labs, discussion areas, etc_

. . . box



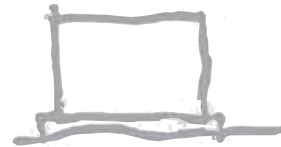
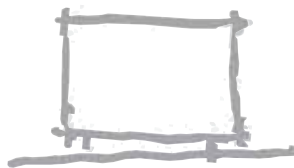
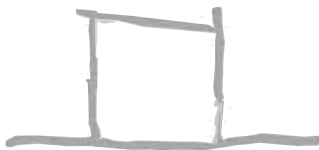
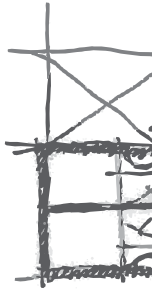
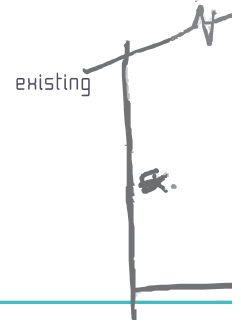


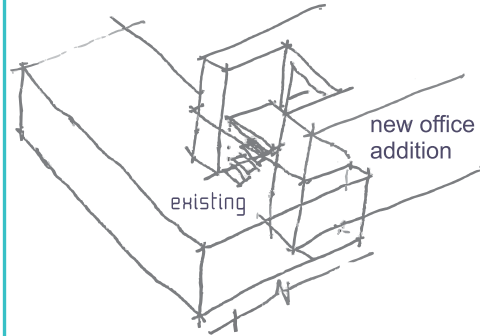
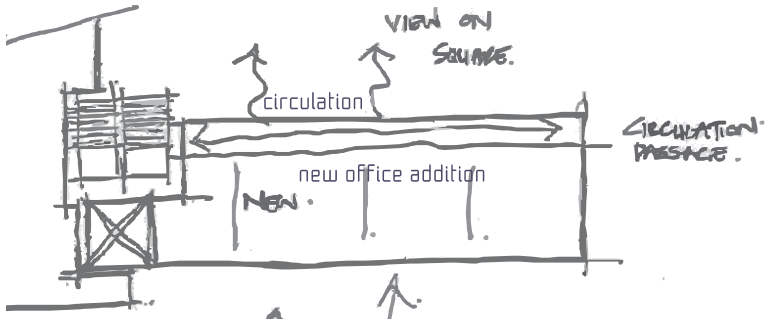
>offices and retail component_



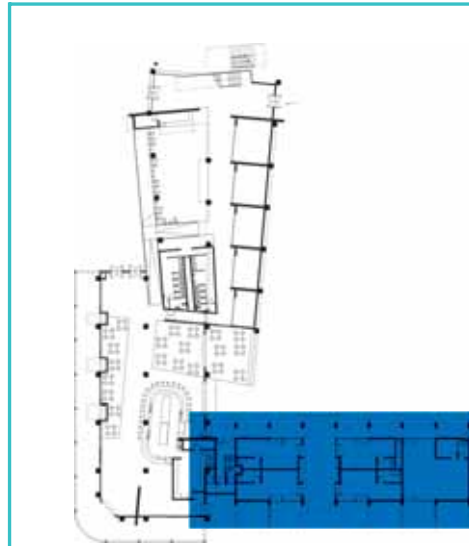
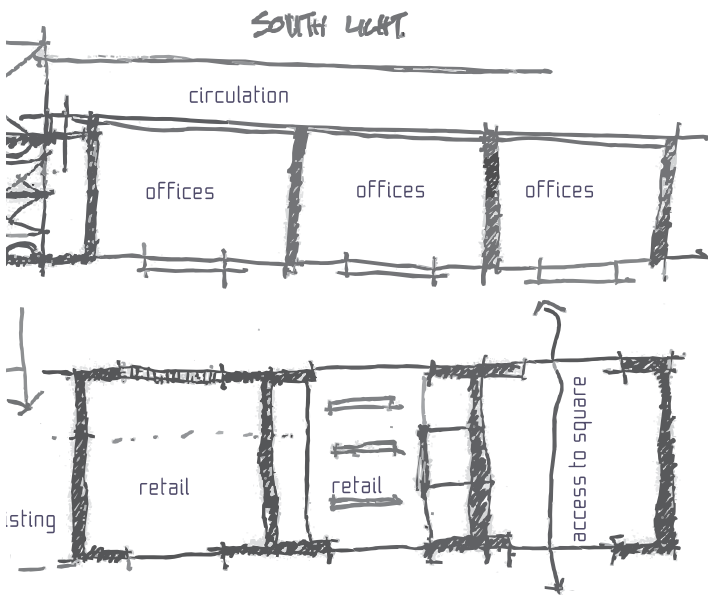
.Retail space on ground floor to accommodate existing retail functions_

.First floor to accommodate offices for school, as well as extra offices providing rental income_



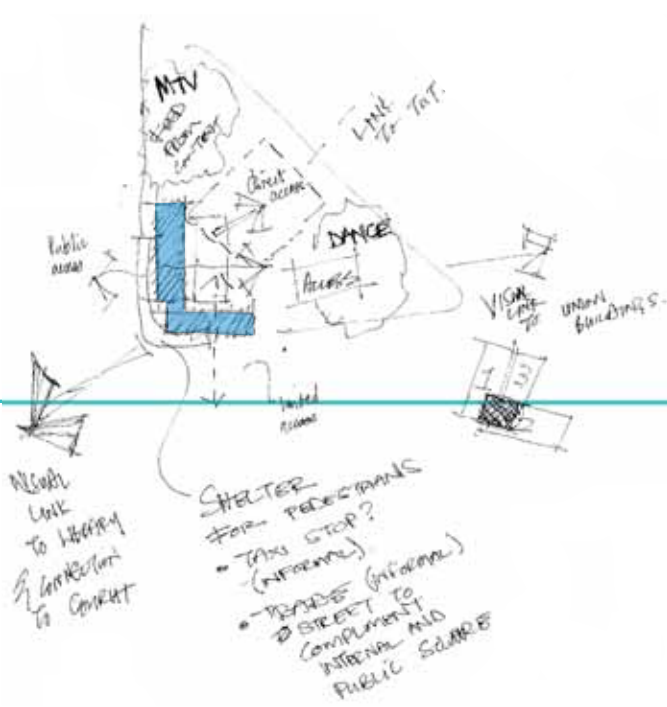


7.12

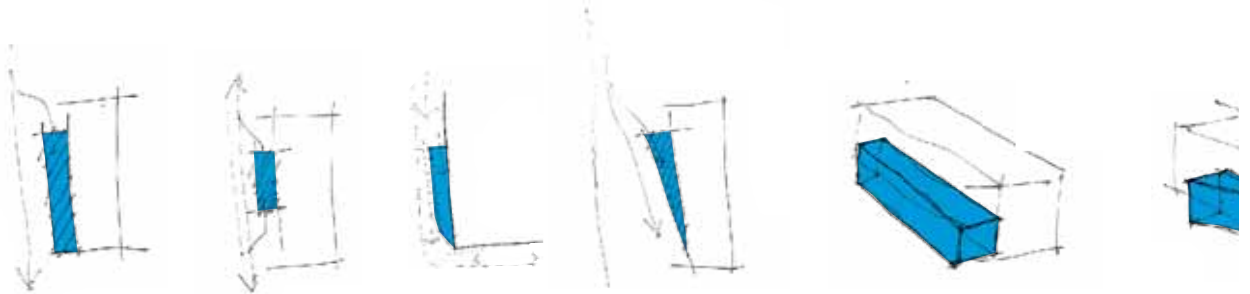
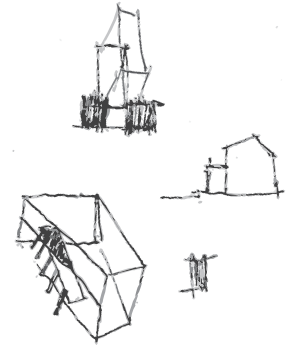




>02_05_07_

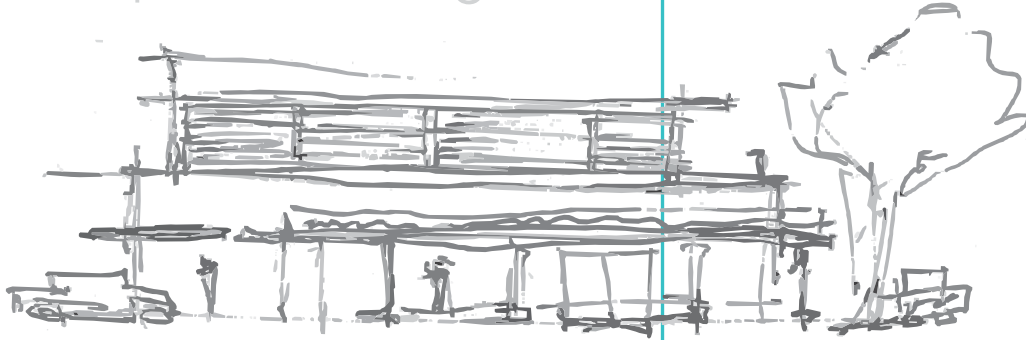


SHED FOR PEDESTRIANS
 • TAXI STOP (informal)
 • TRADES (informal)
 • STREET TO COMPLEMENT INTERNAL AND PUBLIC SQUARE



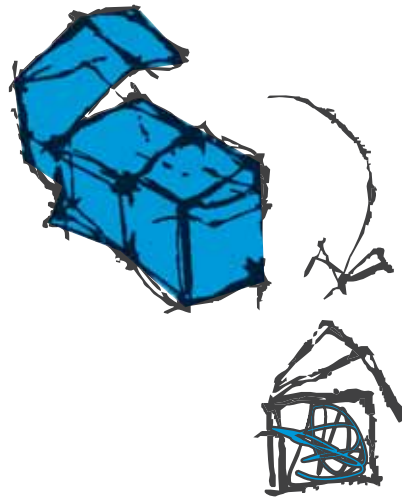
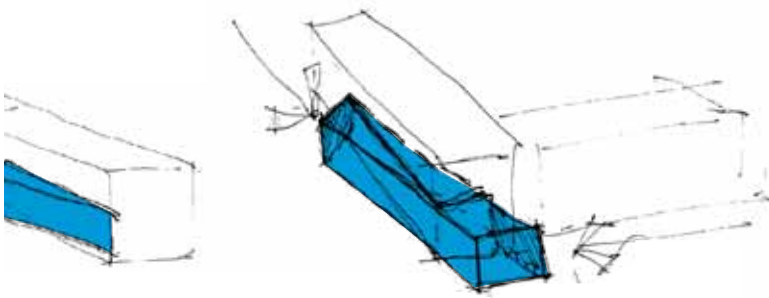


conceptual massing from Prinsloo street



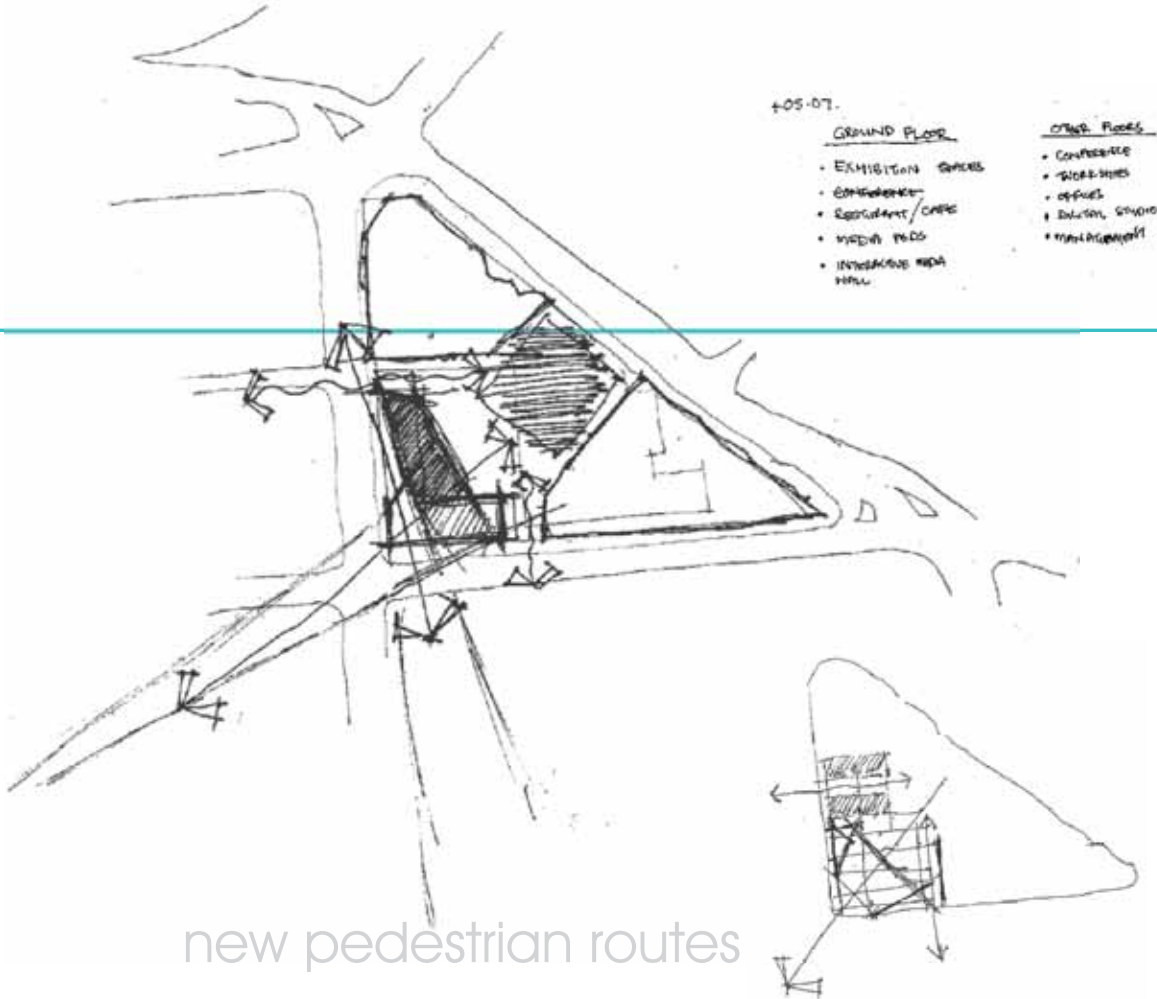
7_14

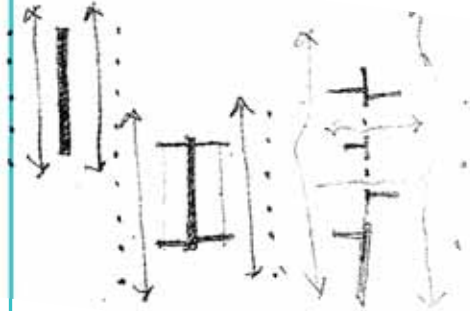
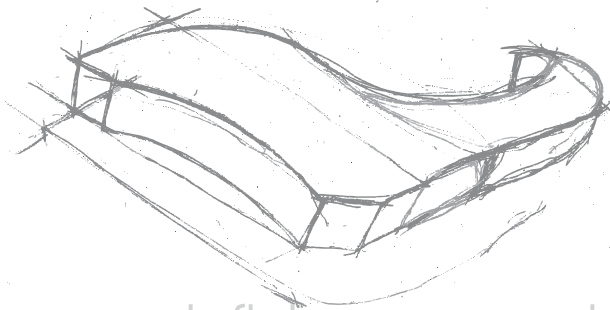
articulating pedestrian flow



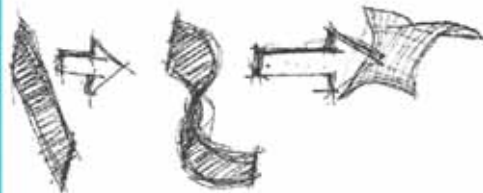
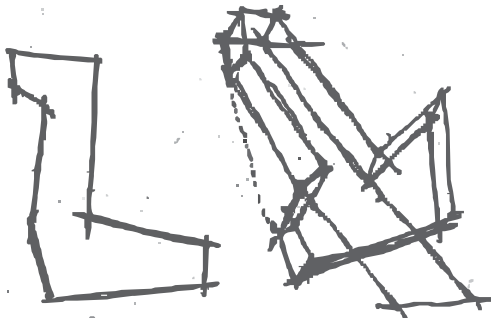
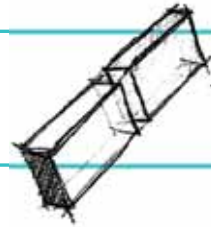
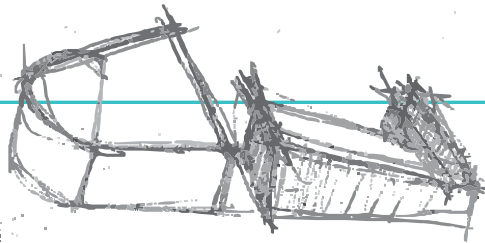


>04_05_07_



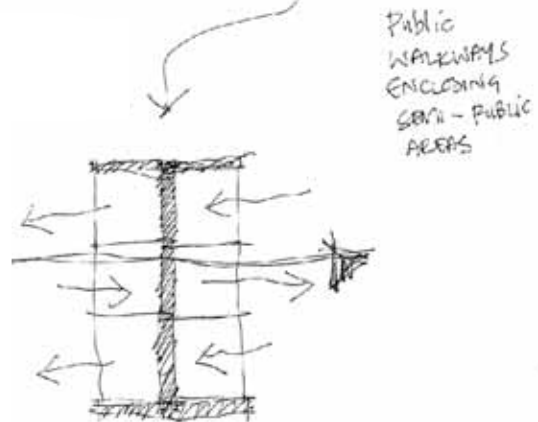
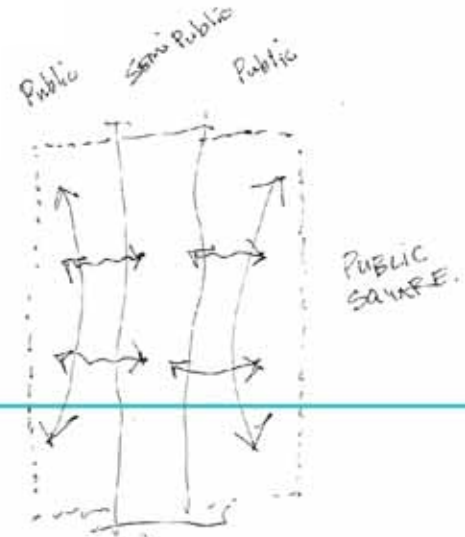
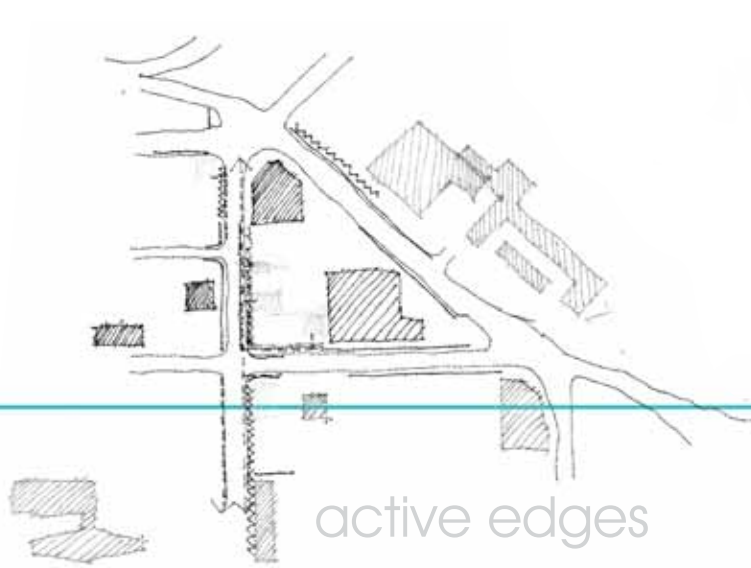


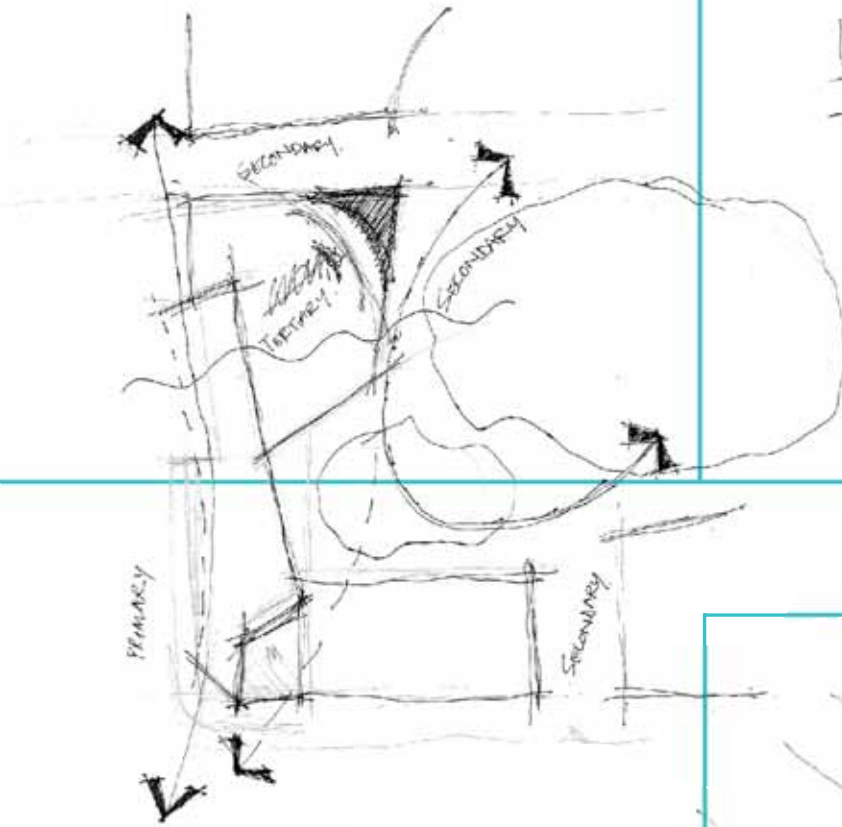
defining permeability through existing structure



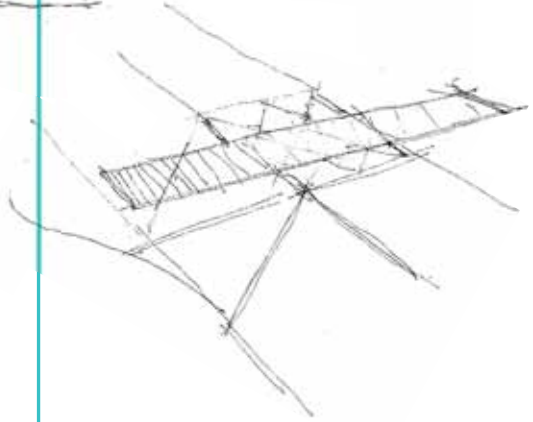
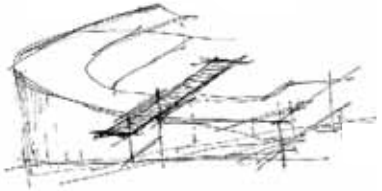


>09_05_07_

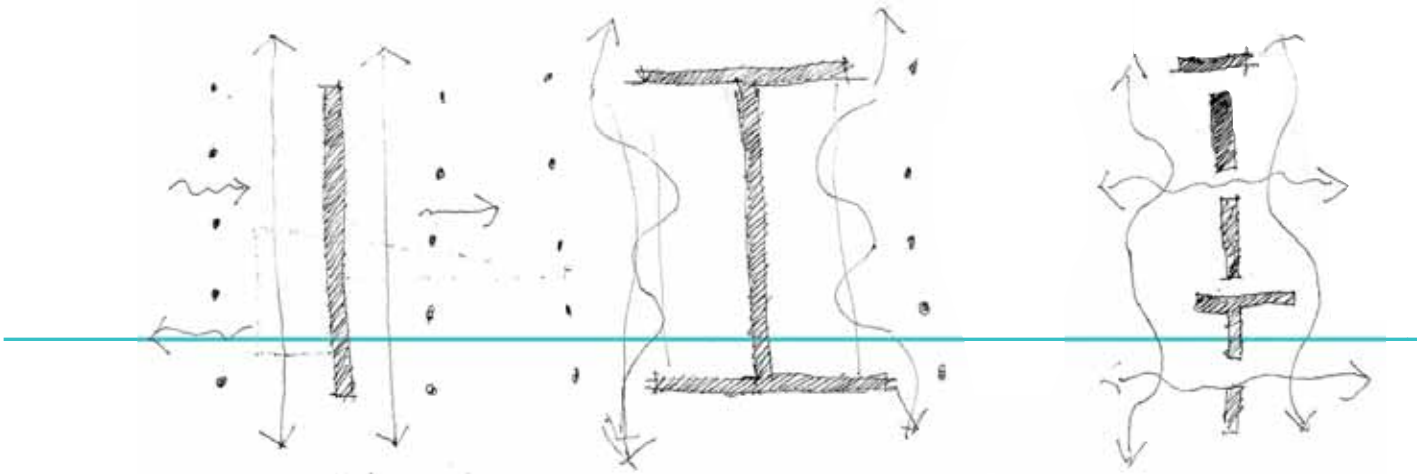




- LEVELS
- EDGE
- SIDE WALK
- PARKING
- PLANT
- INTERSECTION
- TREES
- SEATING
- STANDOFF



>14_05_07_

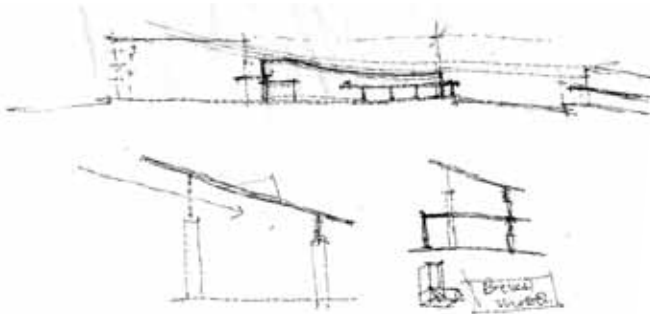
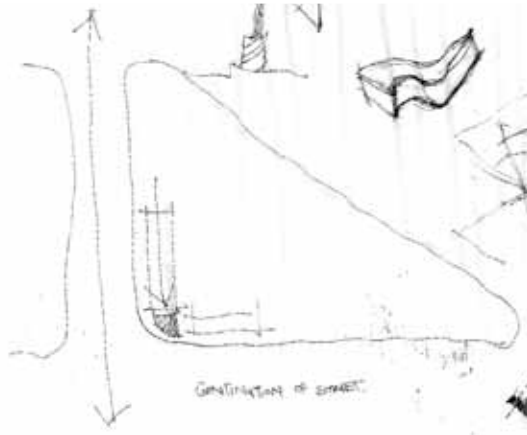


Building as public street.

Public on both
sides of building

Perforated edges
to allow access?

continuation of street.....



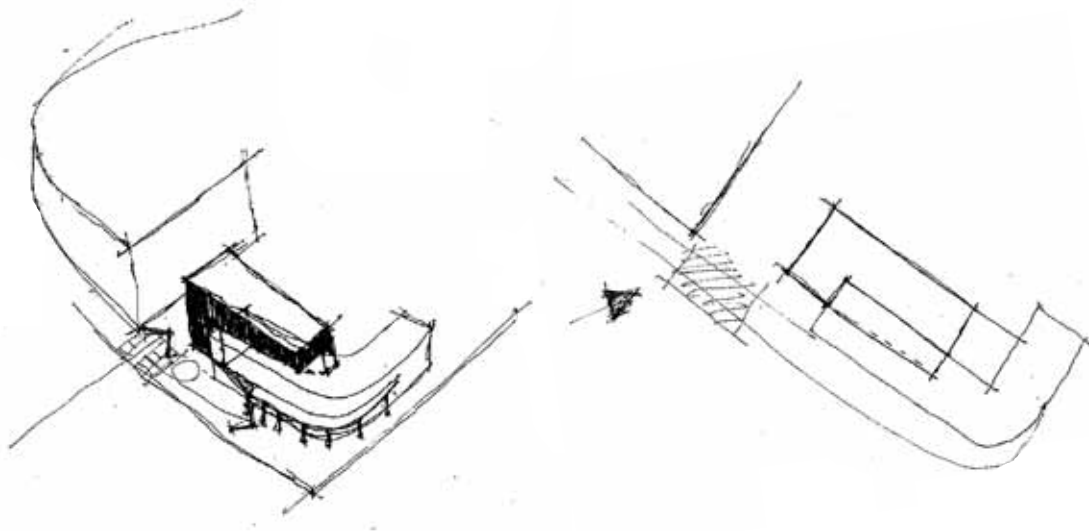
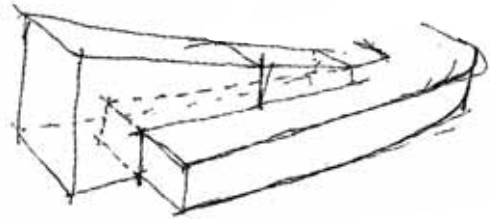
7.20

.....building as street

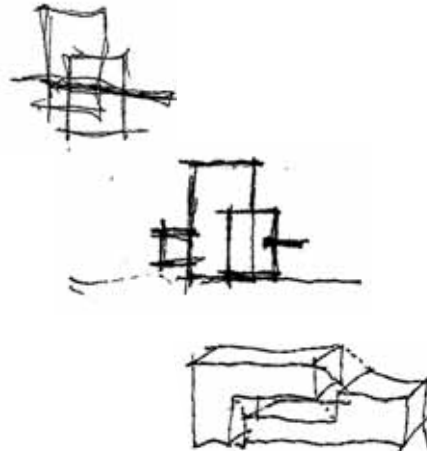
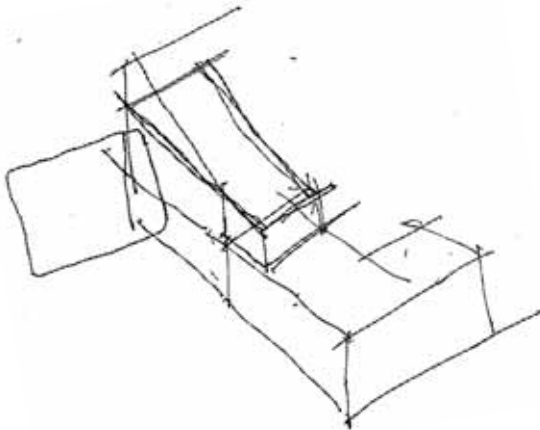
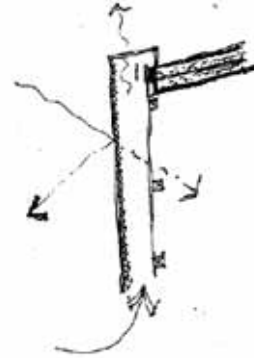
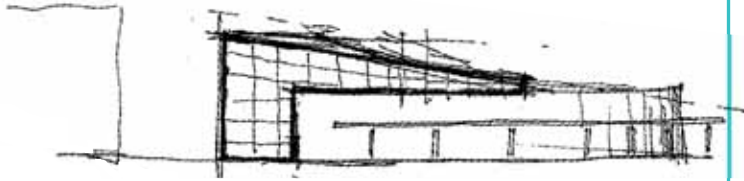


>20_05_07_

facade treatment



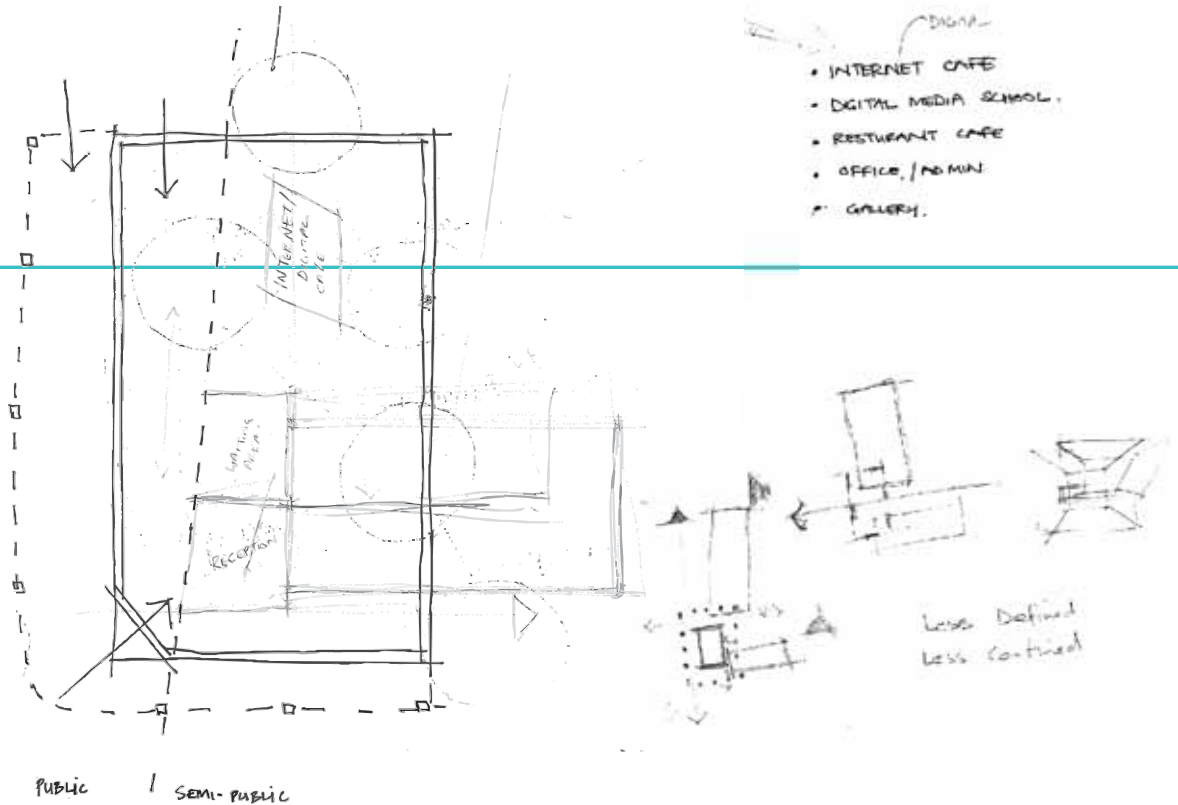
massing and volume



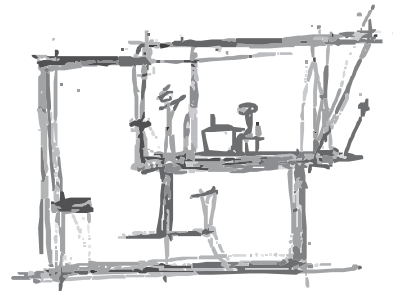
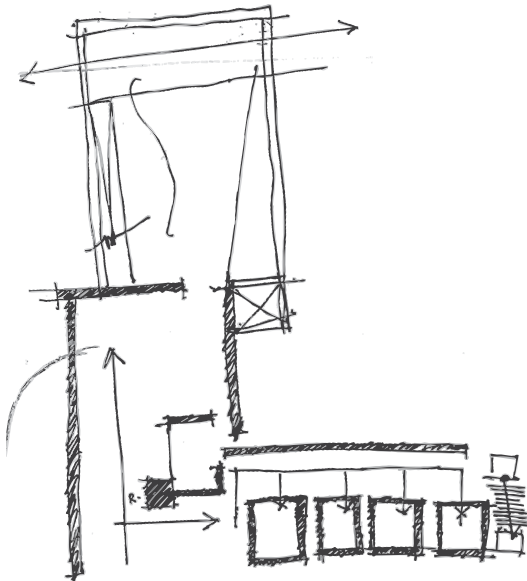
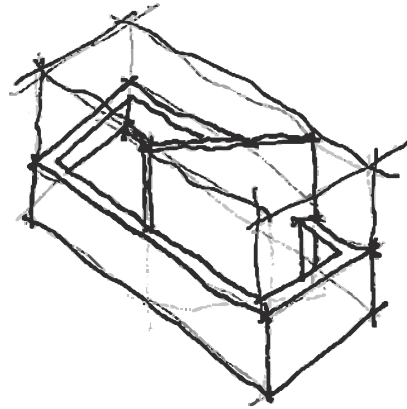
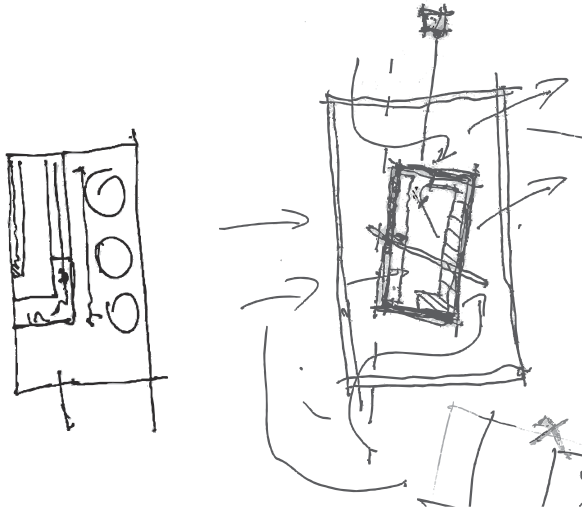


>28_05_07_

continuation of street...

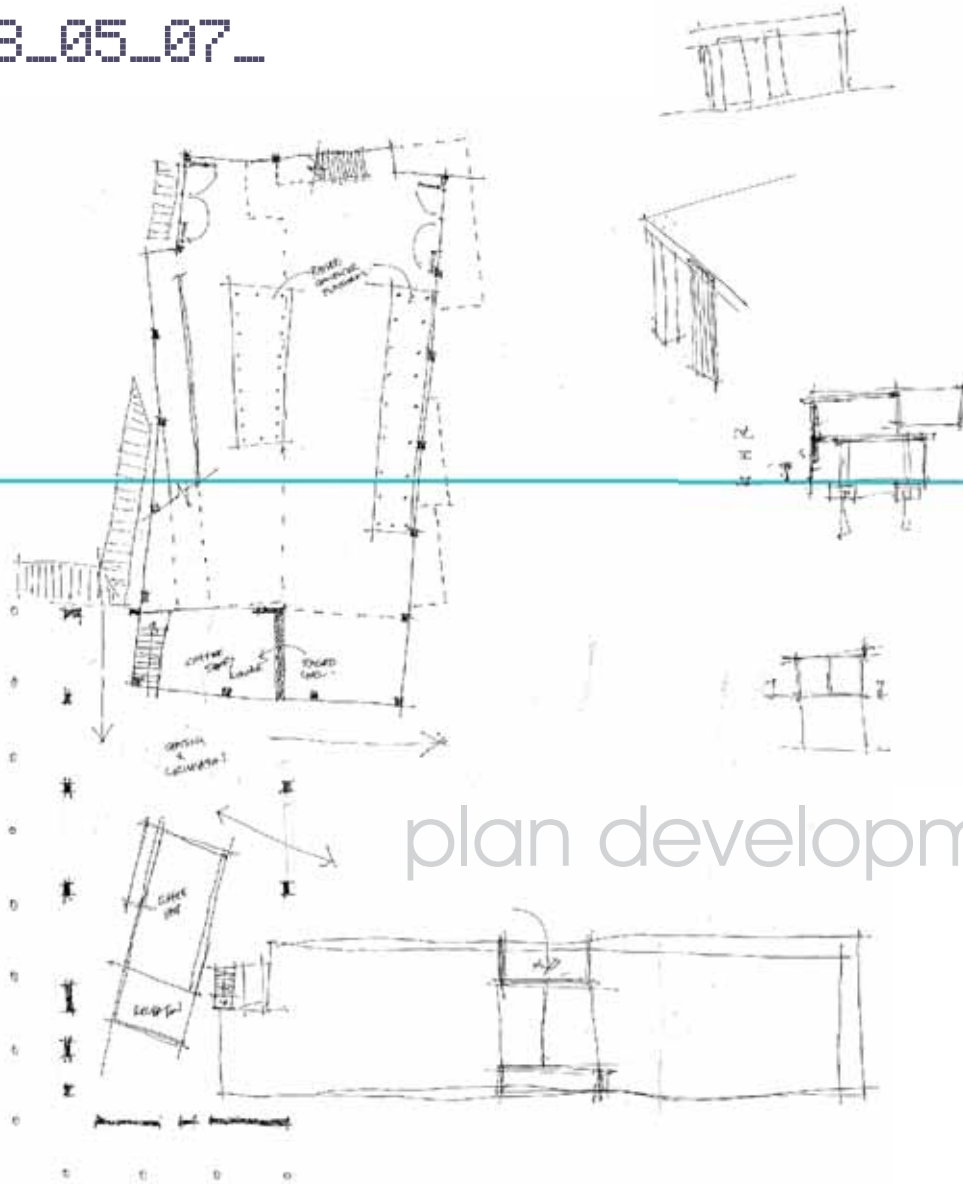


...public flow through
building

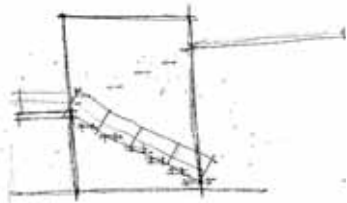
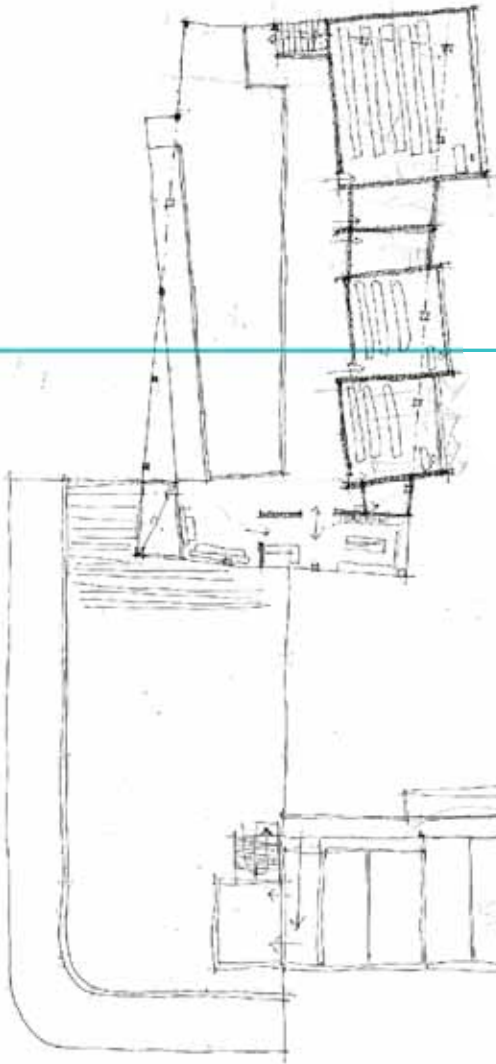
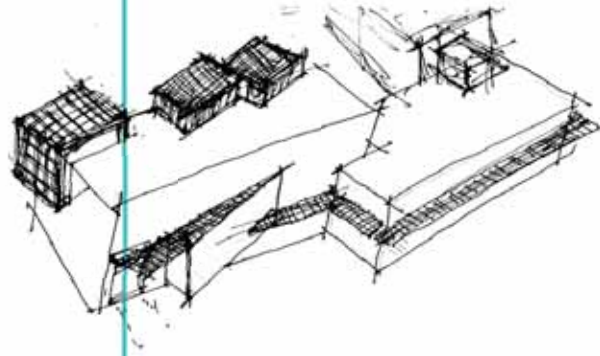




>28_05_07_

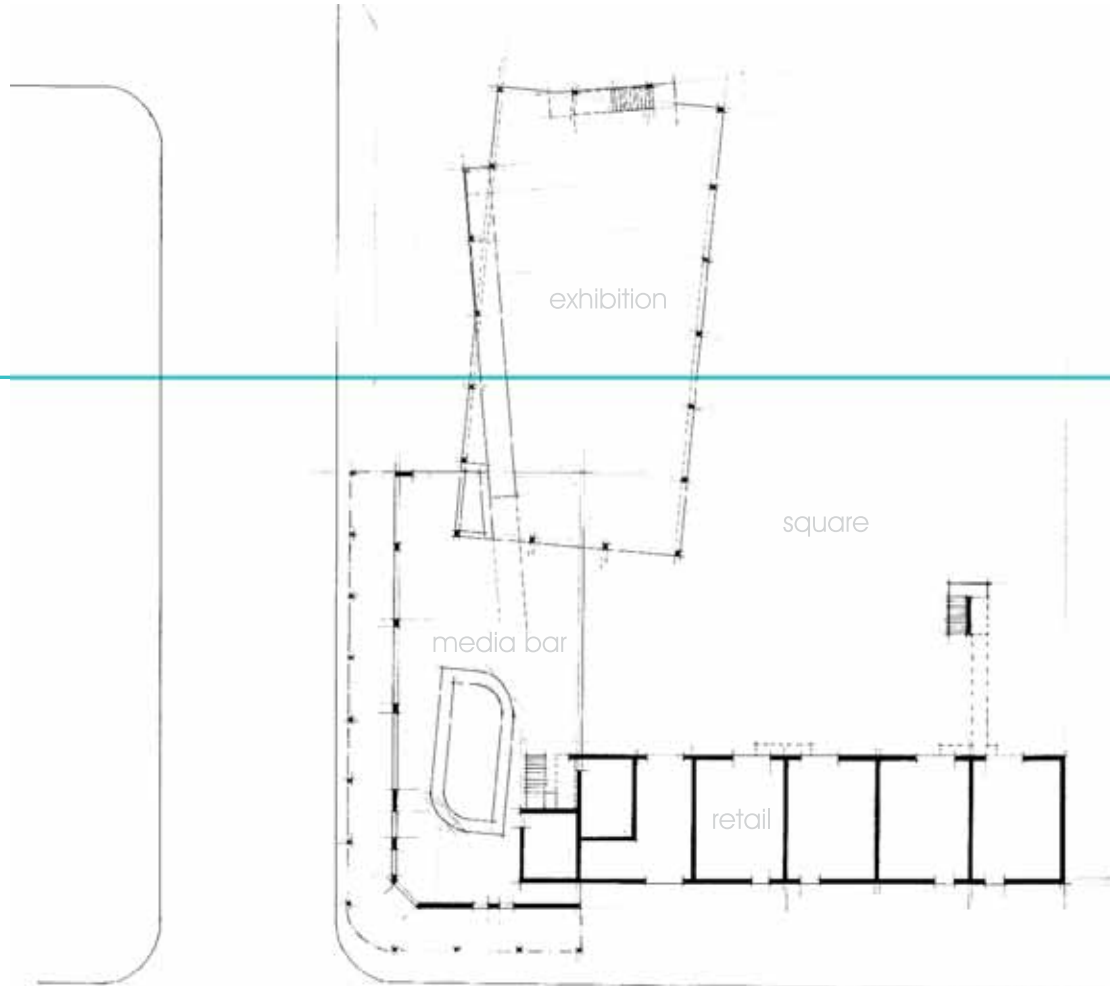


plan development





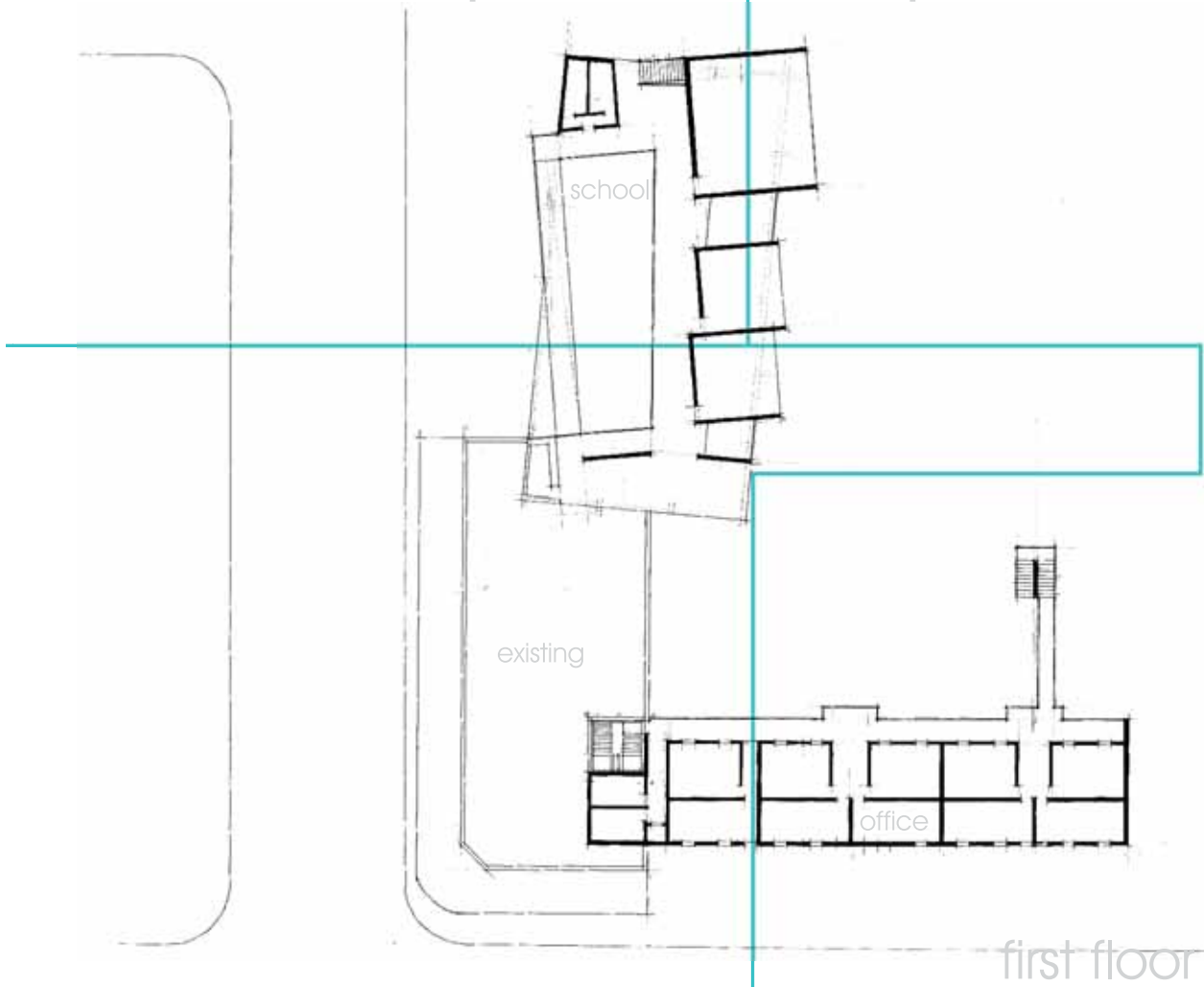
>04_06_07_



ground floor



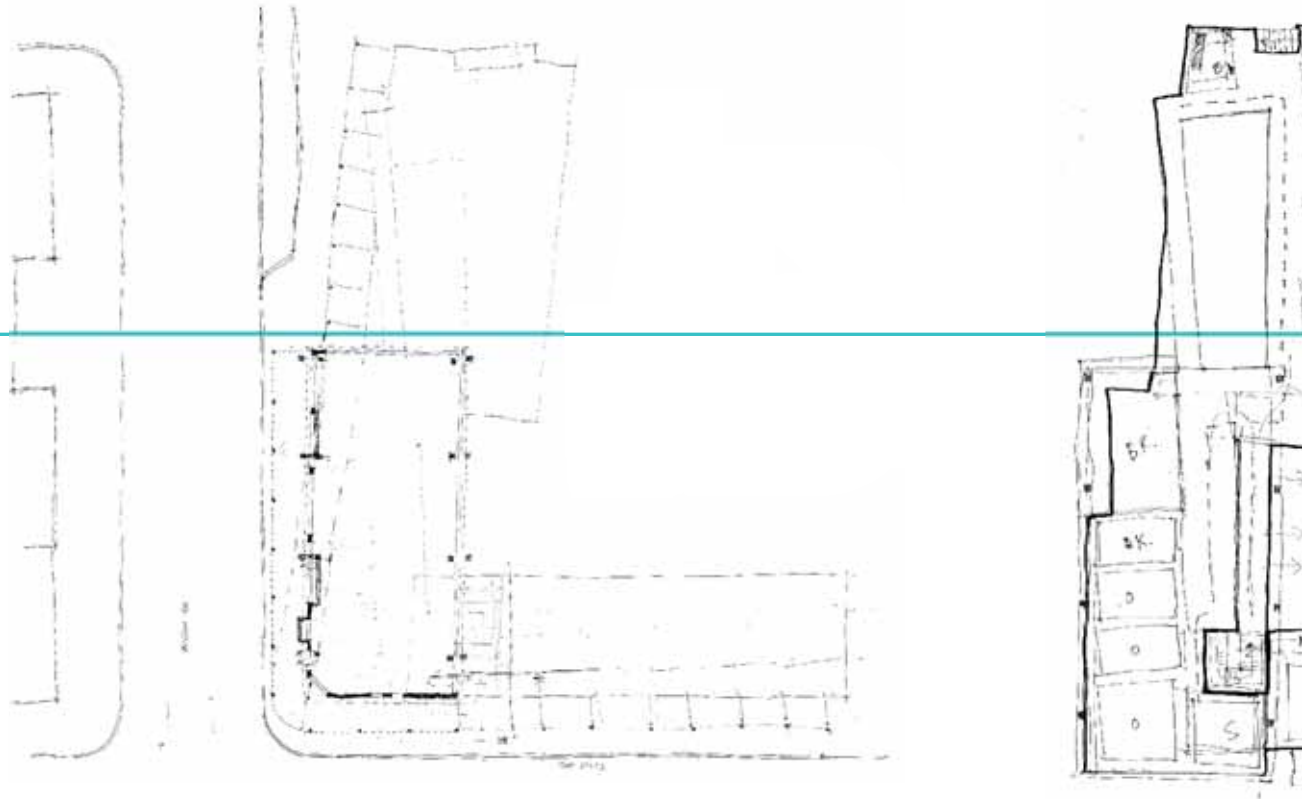
plan development



7.28

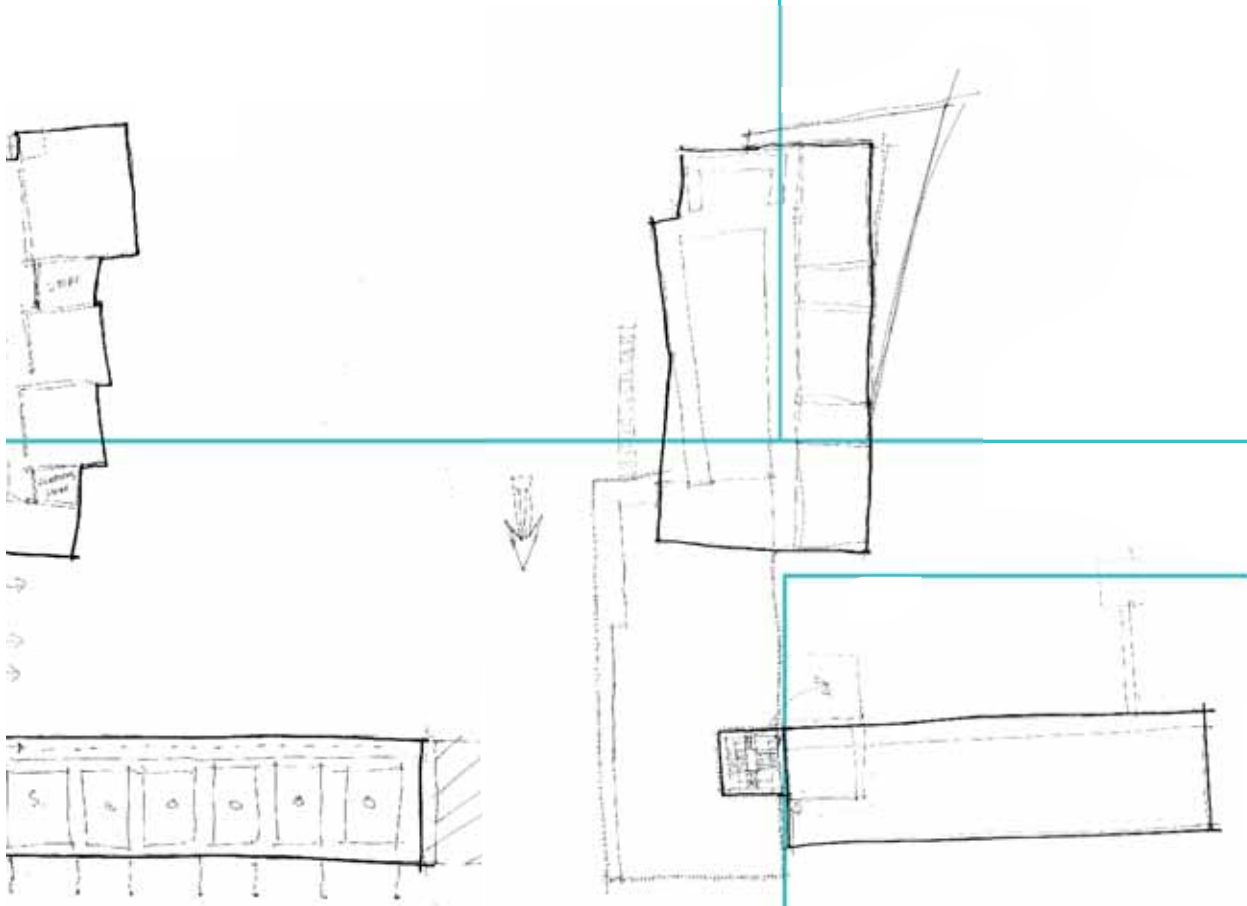


>28_05_07_



ground floor

plan development



first floor

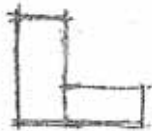
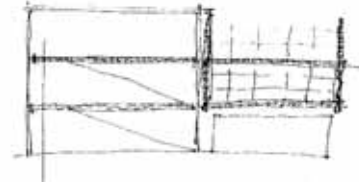
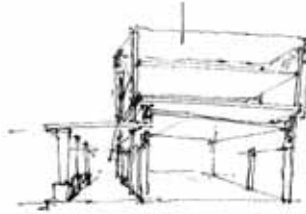
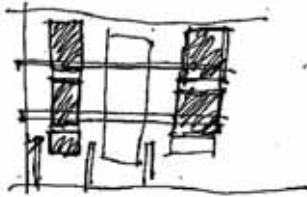
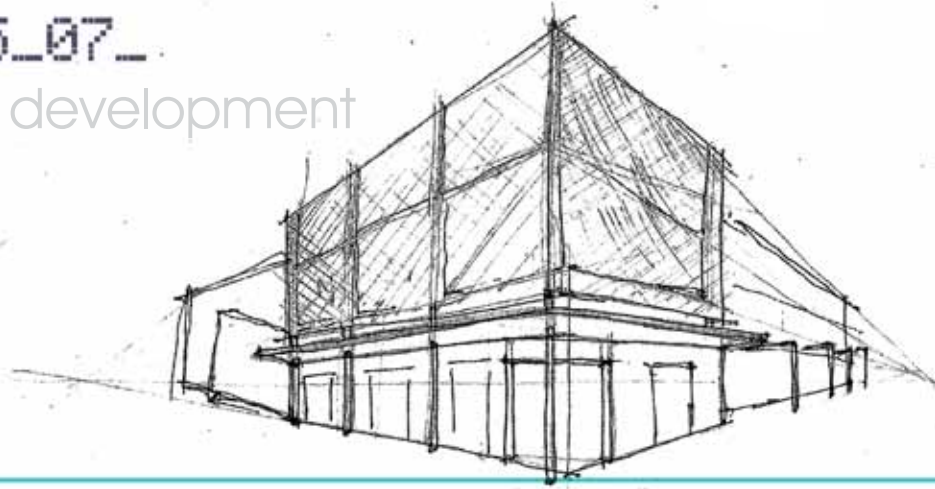
second floor



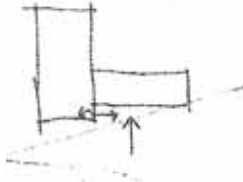


>28_05_07_.

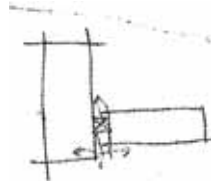
facade development



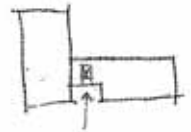
+



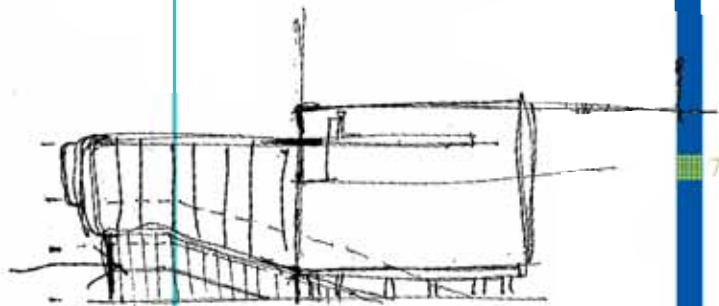
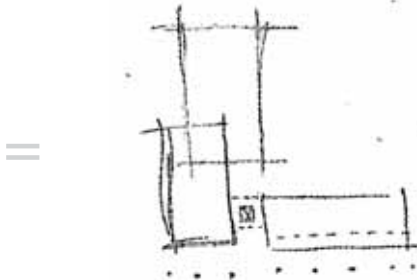
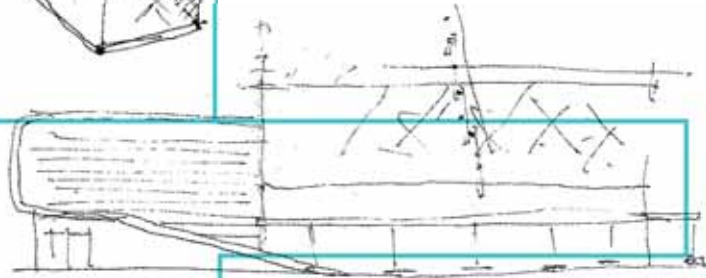
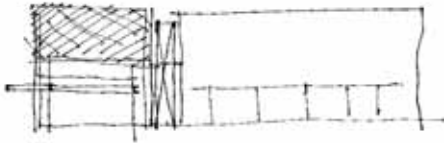
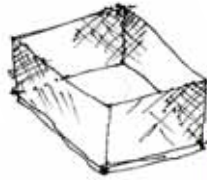
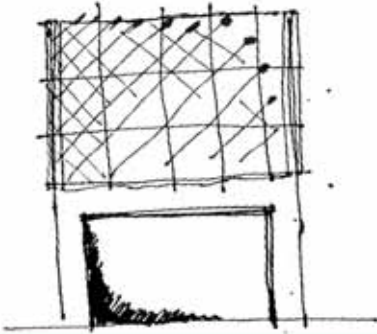
+



+

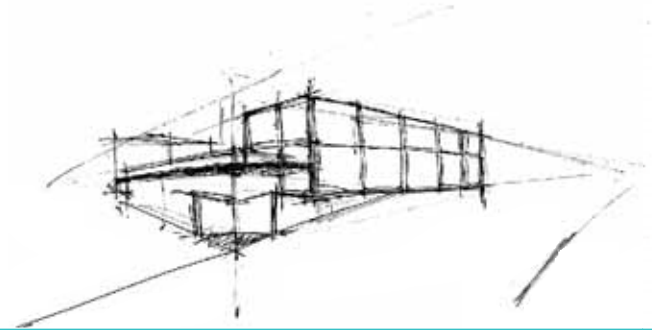
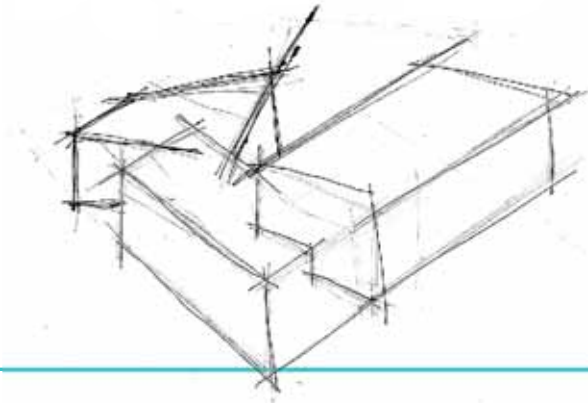


plan development

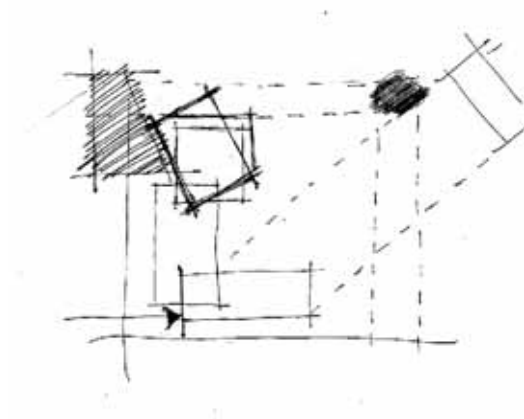




>28_05_07_

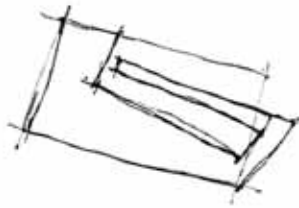
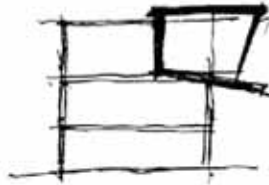
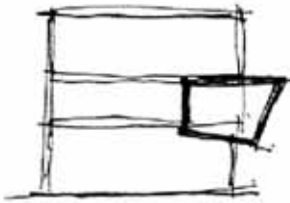


rotated axis

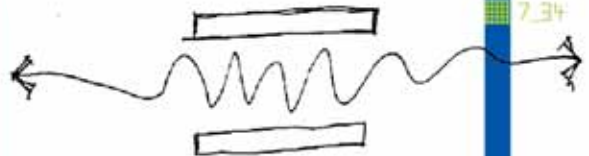
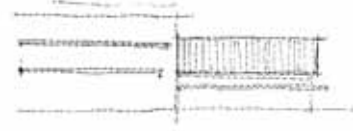
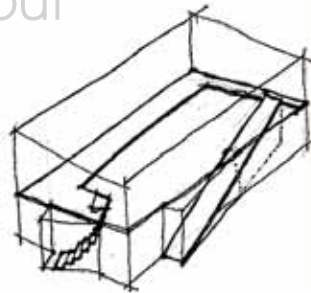
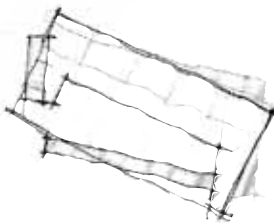




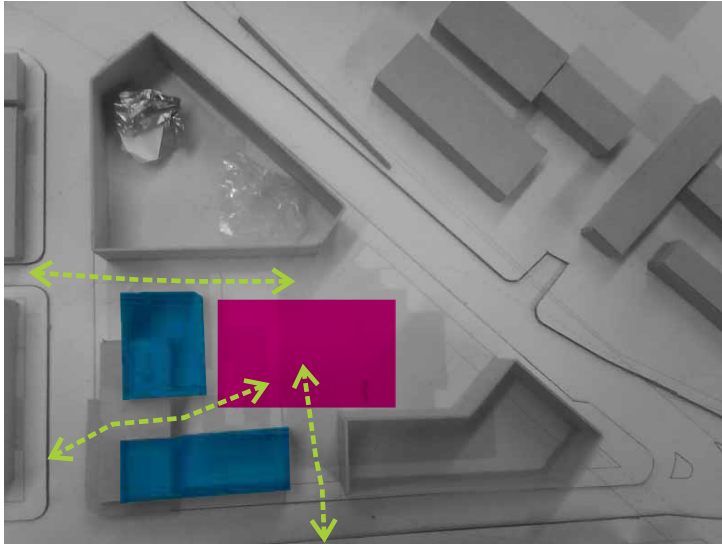
sectional layering



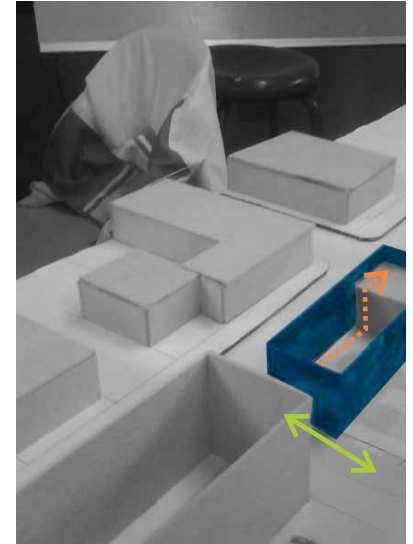
circulation layout



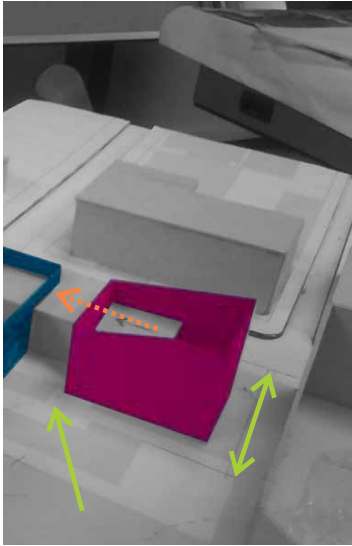
>concept model 001_



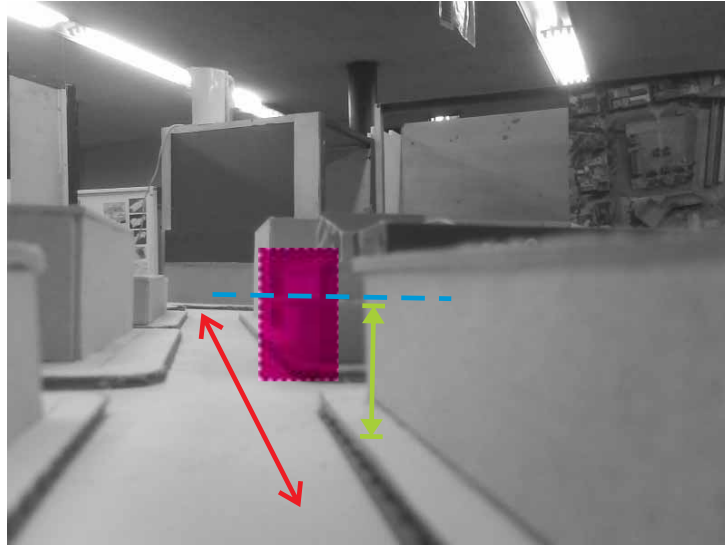
urban response



building connect



actions

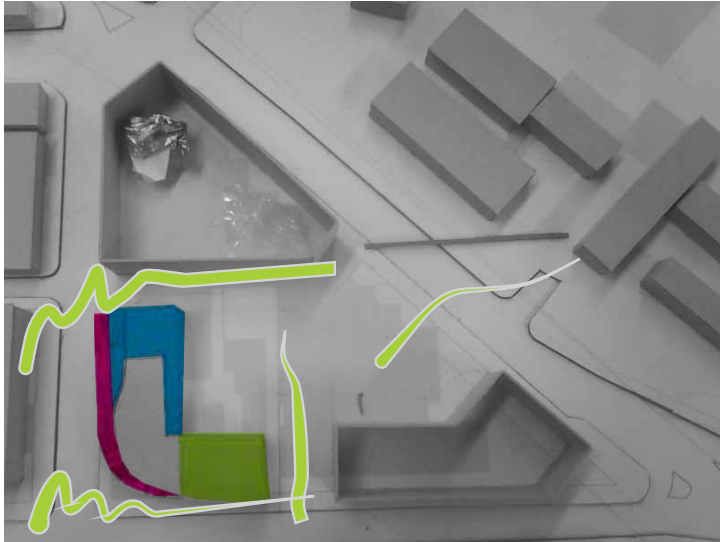


colonnade

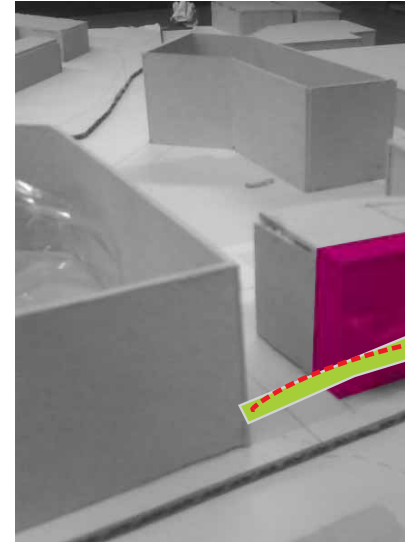




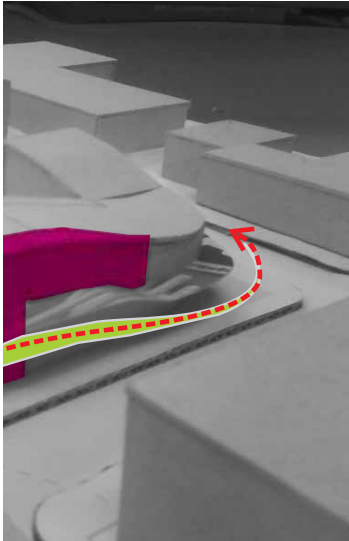
>concept model 002_



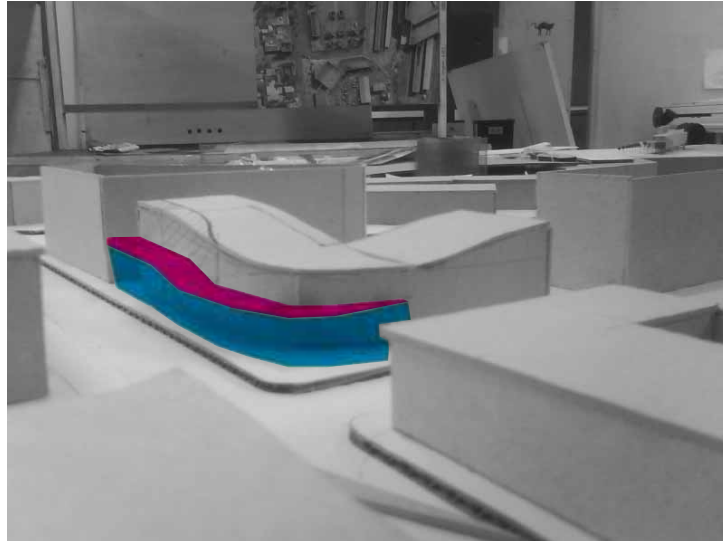
urban response



building set back
flow



ick to increase

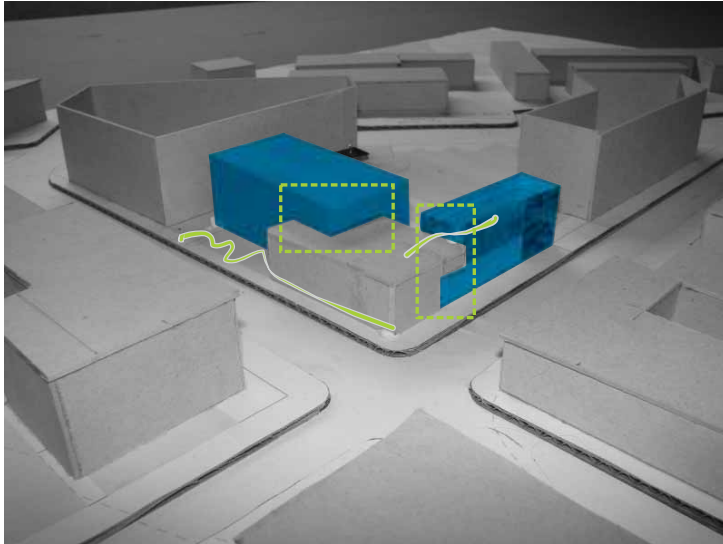


continuation of colonnade

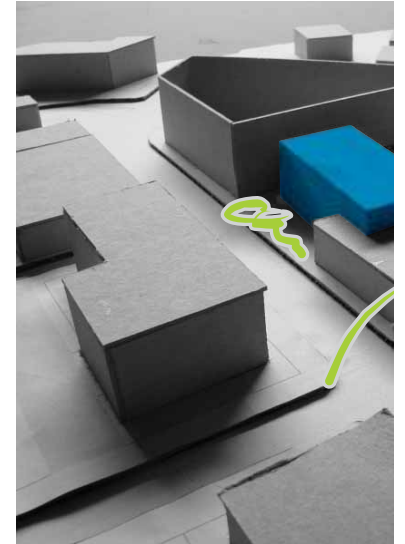




>concept model 003_



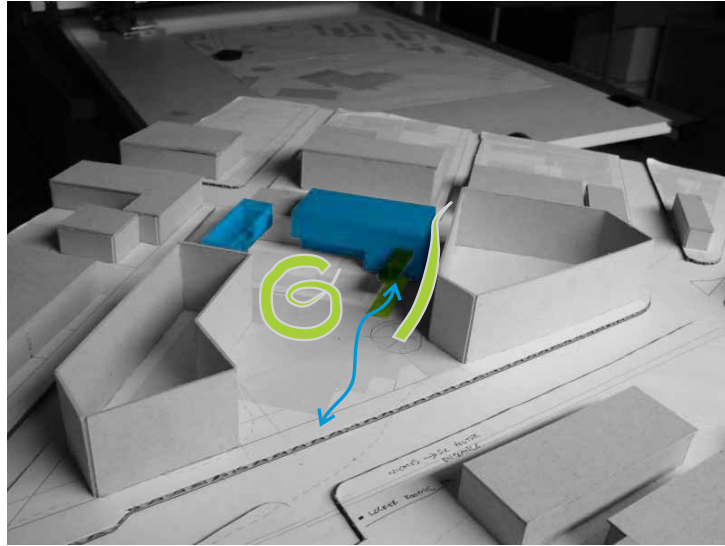
articulation of connections



public space a



and routes



public square