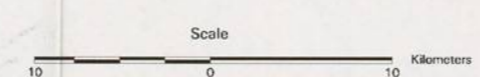
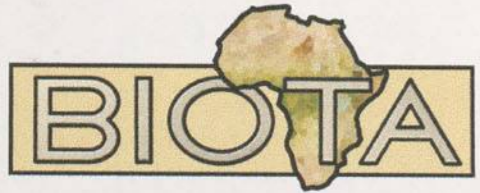


MAP 1: false colour composite satellite image of the southern part of the study area



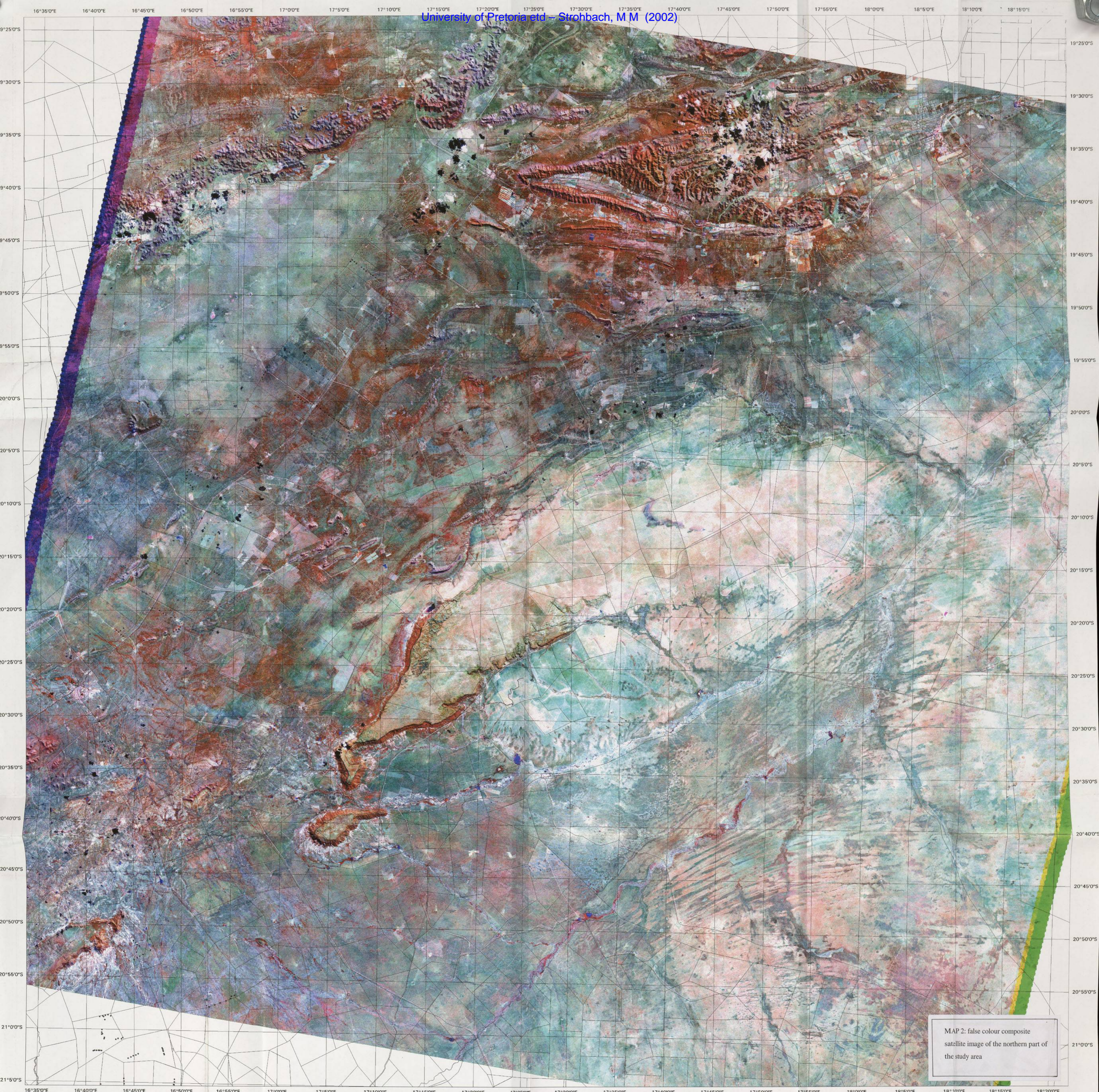
Projection: Geogr. Lat./Long.
Spheroid: WGS 84
Datum: WGS 84



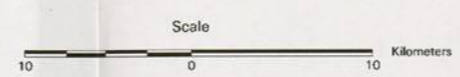
Agro-Ecological Zoning Programme
Ministry of Agriculture, Water & Rural Development

LANDSAT 7-ETM+
Path/Row: 178-75
Date: 17.05.2000
R/G/B: 4/5/3

"178-75-000517-4r1-reels-1.img"
Mapping: M. Vogel
D.R. 2002



MAP 2: false colour composite satellite image of the northern part of the study area



Scale: 1 : 250.000
Projection: Geogr. Lat./Long.
Spheroid: WGS 84
Datum: WGS 84

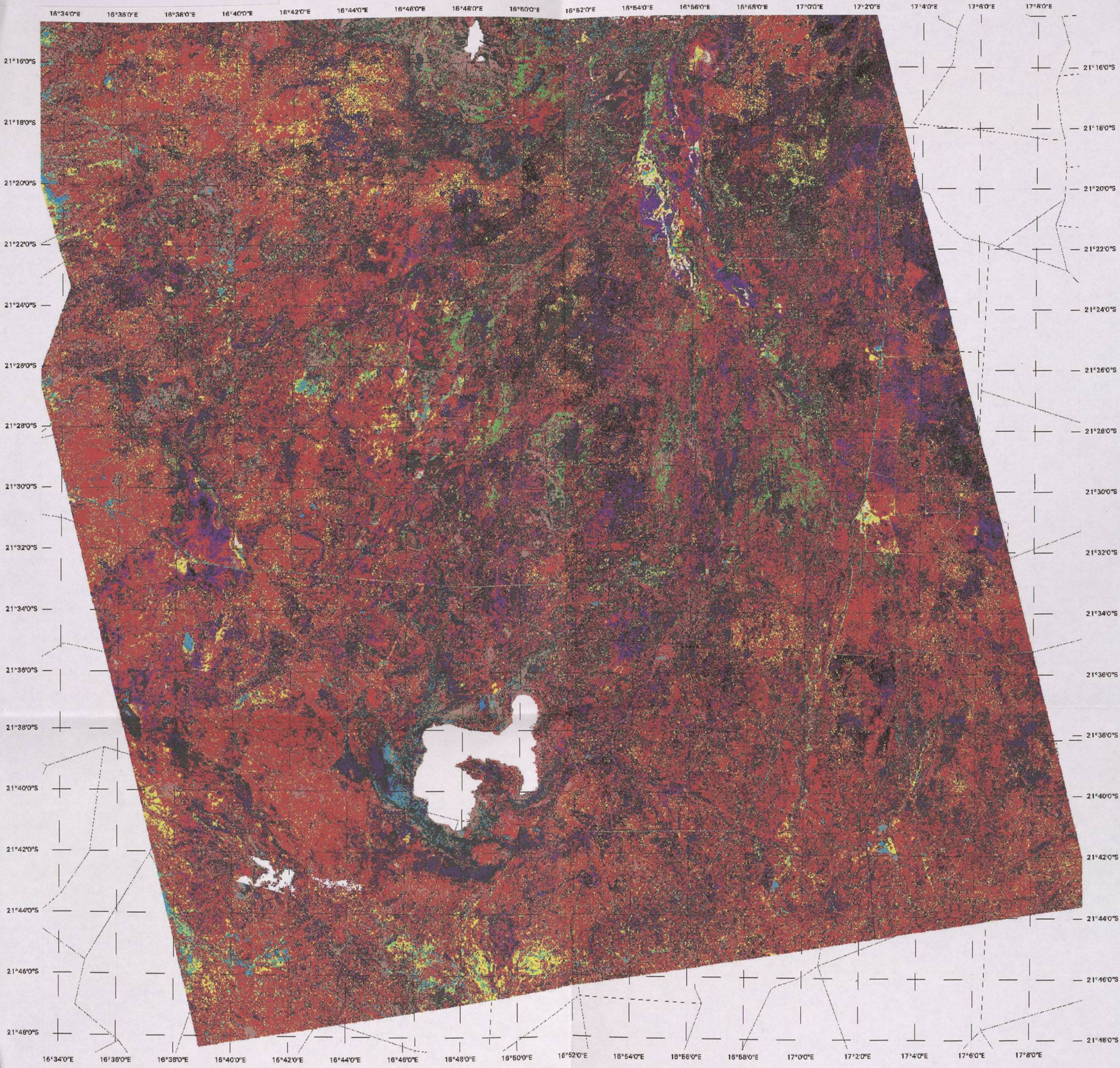


Agro-Ecological Zoning Programme
Ministry of Agriculture, Water & Rural Development

LANDSAT 7-ETM+
Path/Row: 178-74
Date: 17.05.2000
R/G/B: 4/5/3
"178-74-200517-4rfrak-1.img"
Mapping: M. Vogel
DLR 2002

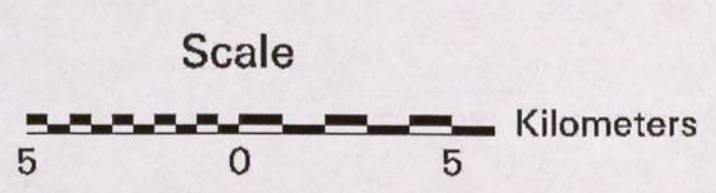
MAP 3:

Supervised classification of
vegetation associations of the
southern part of the study area,
part 1



Legend: Vegetation Associations

| association | association | association | association |
|-------------|-------------|-------------|-------------|
| 1 | 6 | 2 | 3 |
| 5 | 7 | 9 | 4 |
| 5 | 8 | 10 | 3 |



Projection: Geographic
Ref. Ellipsoid: WGS 84
Geodetic Dat. WGS 84

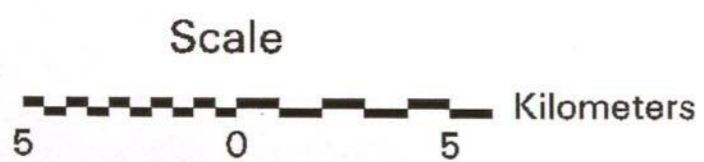
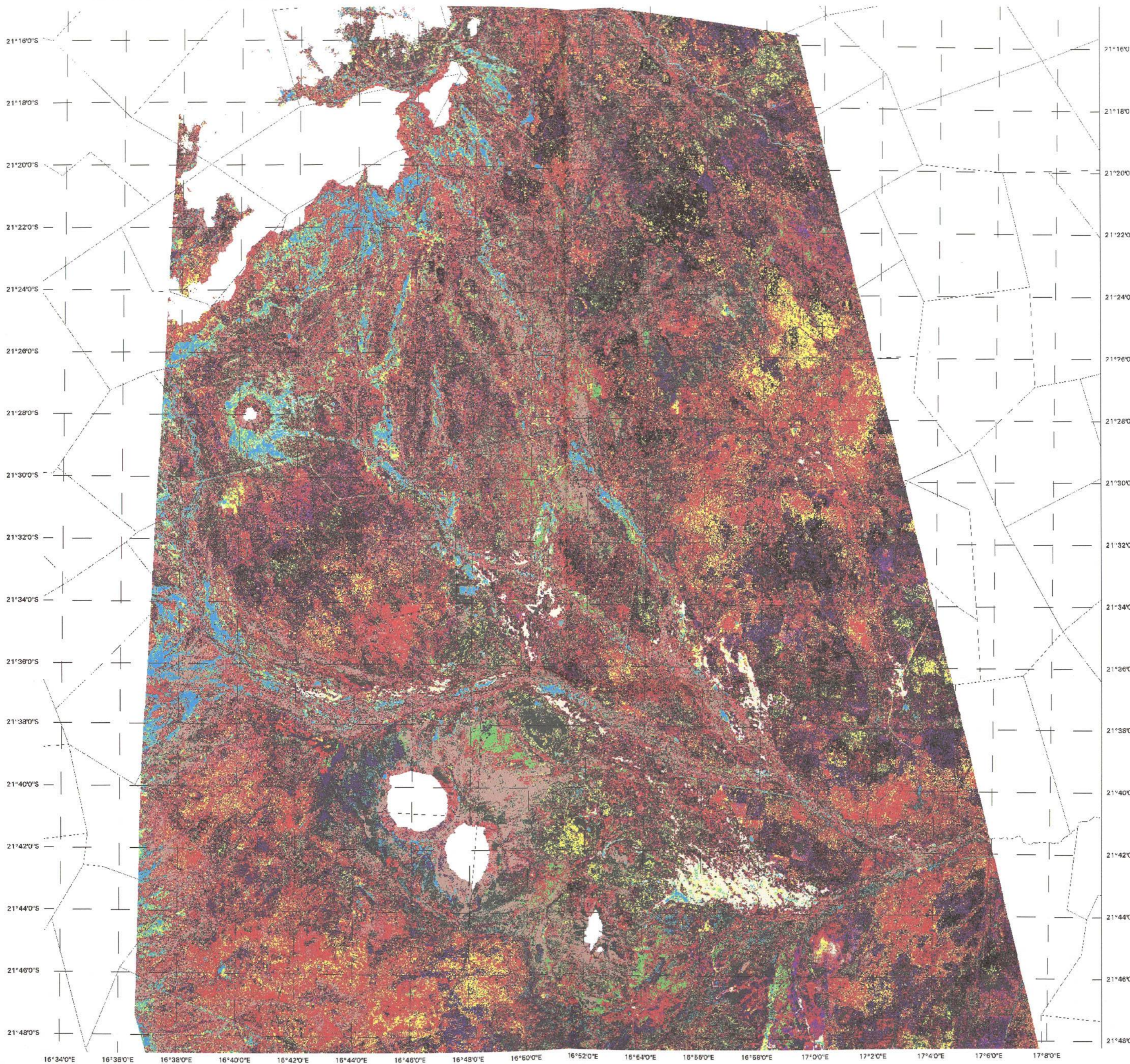
Distribution of Vegetation Associations
Part 1
Classification with TWINSpan
Image Base LANDSAT ETM 178-75
Image Date 17.05.2000



Image processing by:
Melanie Vogel & Marianne Strohbach
September 2002

MAP 4:

Supervised classification of
vegetation associations of the
southern part of the study area,
part 2



Projection: Geographic
Ref. Ellipsoid: WGS 84
Geodetic Dat. WGS 84

Legend: Vegetation Associations

| association | association | association | association |
|-------------|-------------|-------------|-------------|
| 1 | 6 | 2 | 3 |
| 6 | 7 | 9 | 4 |
| 6 | 8 | 10 | 5 |

Distribution of Vegetation Associations

Part 2

Classification with TWINSpan

Image Base LANDSAT ETM 178-75

Image Date 17.05.2000

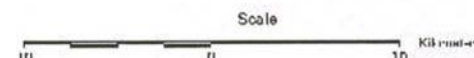
Image processing by:

Melanie Vogel & Marianne Strohbach

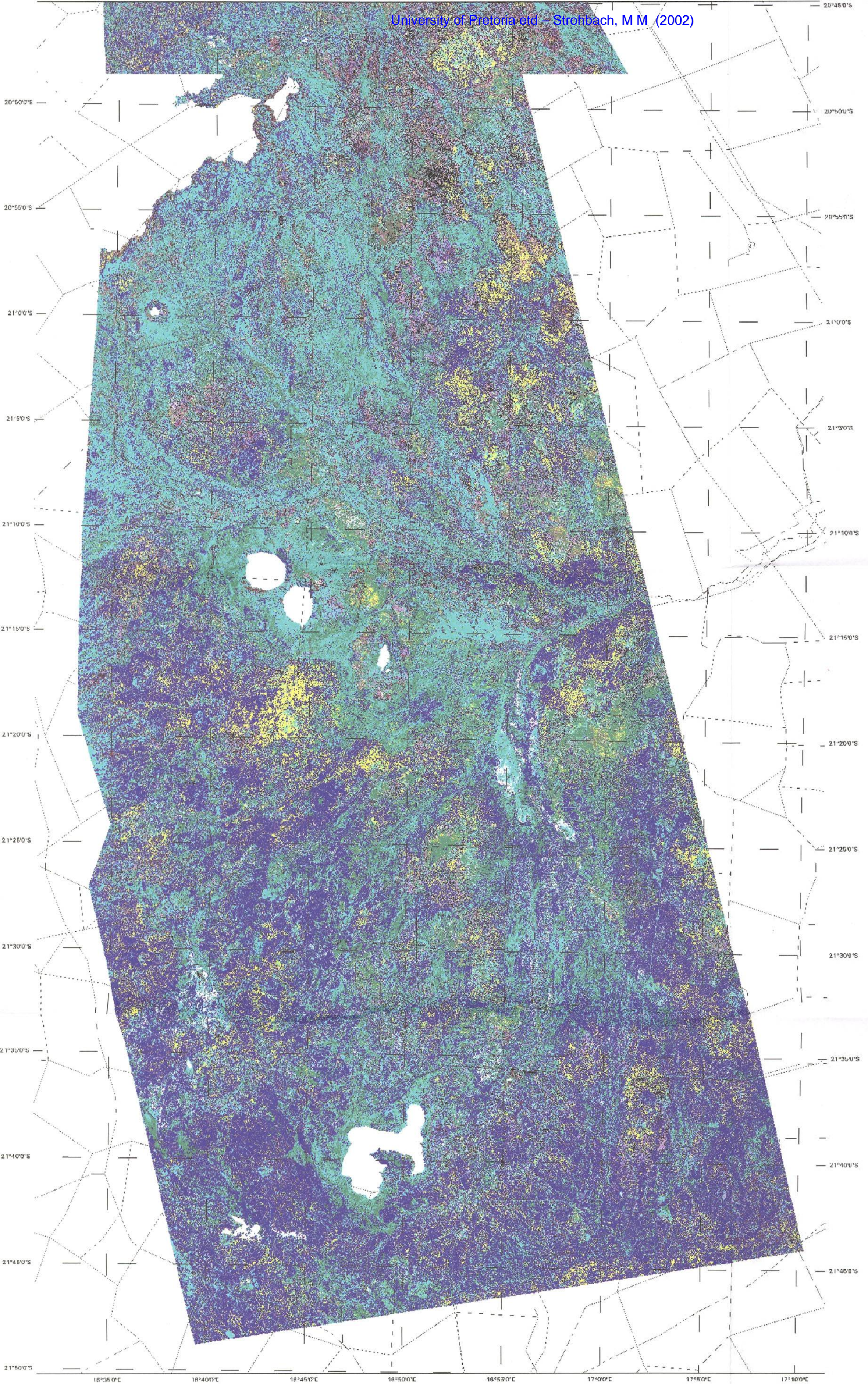
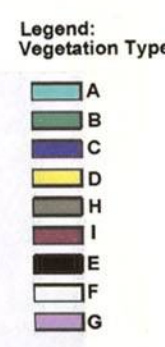
September 2002



MAP 5:
First approximation of major
vegetation types of the southern
part of the study area



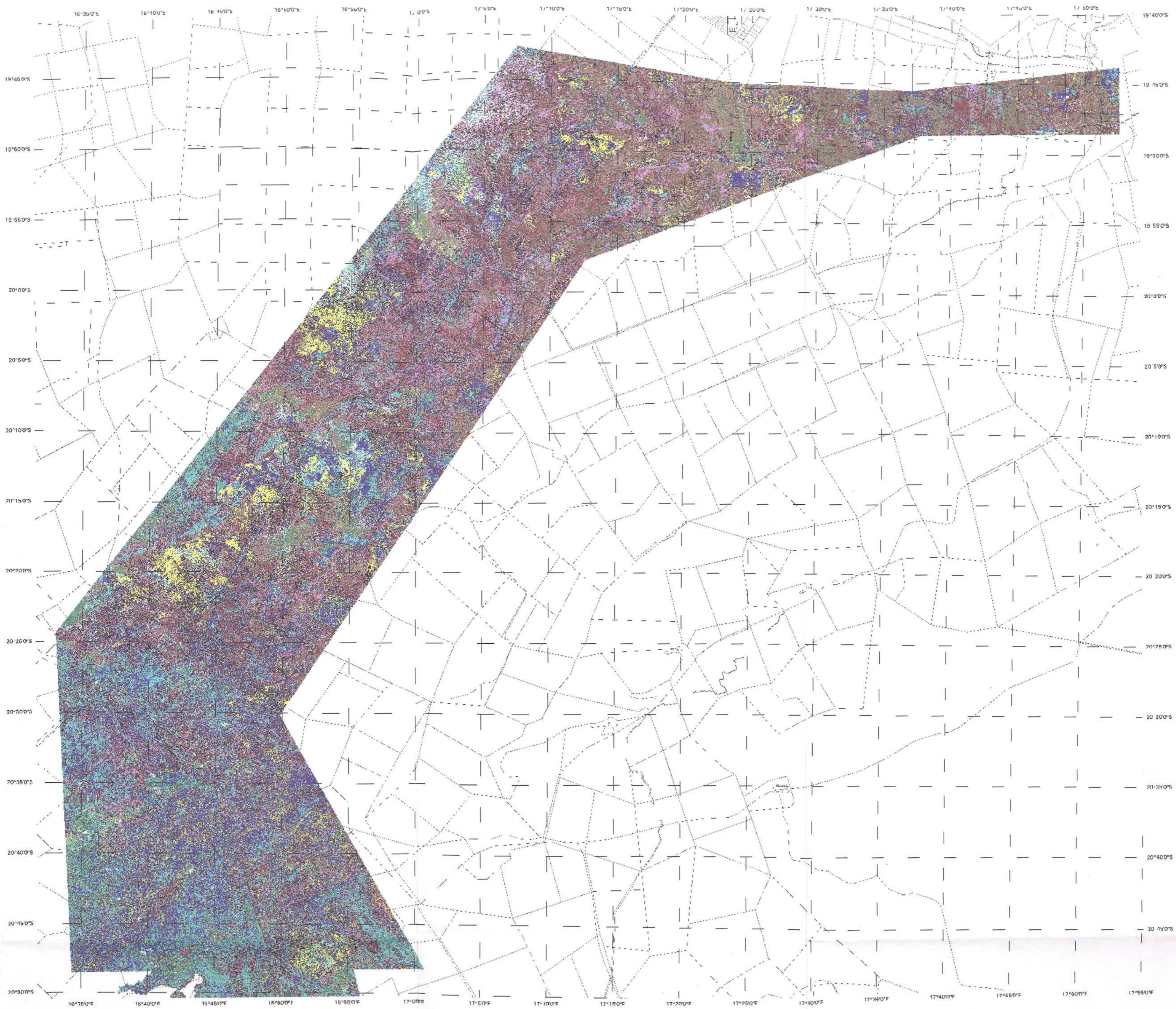
Projection: Geographic lat./long.
Spheroid: WGS 84
Datum: WGS 84



Landsat-7-ETM
Path/Row 178-75
Vegetation data: M. Strohbach
Mapping: M. Vogel
DLR October 2002

MAP 6:

First approximation of major
vegetation types of the northern
part of the study area



Scale: 0 10 20 Kilometers

Projection: Geographic lat./long.

Spheroid: WGS 84

Datum: WGS 84

- Legend:
Vegetation Types**
- A
 - B
 - C
 - D
 - H
 - I
 - E
 - F
 - G

Landsat-7-ETM

Path/Row 178-74

Vegetation data: M. Strohbach

Mapping: M. Vogel

DLR October 2002