

Conclusion

The urban context has dictated that a pedestrian spine is appropriate for development on Paul Kruger Street which will encourage commercial activities along this urban spine. The response to the physical context is guided by the buildings architecture. The front facade has been restored to its original appearance to preserve its distinctive architectural style and use of local material. The remaining structure is of little architectural value which has allowed more freedom changes.

Steel and aluminium track systems are used for the display and lighting systems respectively. The result is that maximum flexibility has been achieved and a clear distinction between the old and the new has been established. The sliding screens cover the walls, creating a new layer on the building envelope. Lighting tracks emphasise the repetition of the trusses and luminaries can be directed where additional light is required.

The combination of activities is suited to the collaboration of people with various skills within the same genre of industry and a support structure is in place for individuals to develop their skills and businesses.

Educational institutions

Educational institutions are listed according to street address, numbered in correlation to the map of educational institutions found in Chapter 2.1 and colour-coded in accordance with the type of institution.

	BUILDING	FUNCTION	ADDITIONAL INFORMATION
Visagie			
1	Hamilton Primary School	Primary Education	Gr 1-7 (6-13yrs), girl's school
Skinner			
2	UNISA: South African association of Political Science & African Futures Institute	Tertiary Education	Government
3	Tshwane University of Technology: Institute for Economic Research on Innovation,	Tertiary Education	Government
H	Black Beauty Hair Salon	Informal Training	Hair
S	Edcon Business College	Tertiary Education	PC Training & Business College
Schoeman			
6	Tshwane South College, Citicol Twin Palms Training	Tertiary Education	
7	Lyceum College of Higher Education	Tertiary Education	
8	TICBS for Computer and Business Studies	Tertiary Education	PC Training & Business College
9	Damlin Tshwane city campus	Tertiary Education	
10	Credo College: Training Academy	Tertiary Education	(mon-sat) Dressmaking, Fashion Design, Executive Secreterial with computer training, Business Manager with computer training
11	Ebenzer Computer & Business College	Tertiary Education	PC Training & Business College
12	Procomputrain	Tertiary Education	PC Training & Business College
Pretorius			
13	Rosebank College Pretoria Campus	Tertiary Education	
14	Sasol School of Music		
15	Jacaranda Pre-Primary School	-6yrs	
Church			
16	Greenwood College	Tertiary Education	
17	Pretoria Technical College	Tertiary Education	
Church Square			
32	Platinum: Graduate School of Business	Tertiary Education	PC Training & Business College

Vermeulen			
26	Tekkies	3 months-Grade 0 (creche)	Meals, Bilingual, Grass play area, Extra mural activities
Proes			
30	Meridian College	Tertiary Education	
31	Confidence College	Primary and Secondary Education	Grades 1-12
38	Pretoria Institute for Information Technology	Tertiary Education	
37	SA College	Tertiary Education	
Struben			
35	PEN After-care and Development Center	Primary and Secondary Education	Grades 1-12, Private
34	National SA War College	Government	
33	Presererance College	Tertiary Education	
Boom			
32	Tshwane University	Tertiary Education	
36	Prinshoff School	School for the visually impaired	
43	Credo Primary School	Primary Education	Grades 1-7
Potgieter			
27	Tshwane South College Inner City Campus: Early childhood development center	Creche, Pre-primary, Gr R, Gr 1-3	Daycare, aftercare, speech and occupational therapy, gymnasium, karate, computer
Schubart			
H	Hair Training	Informal trade	Hair
Bosman			
28	Eendracht Laerskool	Primary Education	Grades 1-7 (6-13 yrs)
4	Molem Building (Target High School)	Secondary Education	Grades 8-12, Private
Paul Kruger			
29	Princess Park College	Primary and Secondary Education	Grades 1-12
44	Langehoven	Secondary Education	Grades 8-12

Andries			
22	El Shadai	Pre-primary school, creche, aftercare	0-6 yrs
25	A.T. computer Schools	Tertiary Education	PC training and business college
H	School of hair and skills development	Informal training	Hair
39	Progress College	Primary Education	Primary
van der Walt			
23	Educan Business College	Tertiary Education	
24	Academy International: Computer and commercial training institute	Tertiary Education	
H	Hair and skin salon managment	Informal training	Hair
H	Hair	Informal training	Hair
Prinsloo			
20	Free computer training	Tertiary Education	Small admin fee
du Toit			
18	Tshane North Cmpus	Tertiary Education	Snowflake bake for profit community project, Bon Appetit training restaurant, Office training
19	Kid's Corner: Early learning canter	Pre-primary Education	6mth-6yrs (7h15-17h15)
Gerard Moerdyk Street			
41	Learskool Oosteind	Primary Education	Grades 1-7, aftercare
40	Laerskool Presda Mea Vota	Primary Education	Grades 1-7
Jacob Mare Street			
42	ED-u-college	Secondary Education	Grades 8-12

Existing building analysis

This appendix lists only the existing building materials found onsite according to structure, building and interior space.

	WHERE	MATERIAL	DESCRIPTION
Substructure			
Foundation wall	Main building (figure 1 & 2)	Stone	780x170 elev.
	Closed in verandah (figure 3)	Red brick	220x105x75
Superstructure			
Stone cladding (figure 2)	Northern Building: Northern & Western Facades	Stone	Stone cladding is applied to the wall where the stone plinth is not of a satisfactory visual standard. 780x170 elev.
Pavement	Northern building (figure 4)	Blue slate	Traces of original Slate pavement is found in front of doors and windows.
	Padestrian walkway (figure 5)	precast concrete slabs	various sizes
Brick walls	All Builings on property (figures 1, 3 & 6)	Red Brick	Standard 220x105x75
Venestration	Western facade: Ground Floor (figure 7)	Timber Frame	
	First Floor (figure 8)	Aluminium frame (not original)	Brown
Doors	Western facade (figure 9& 10)	Timber frame	
Column	Southern building ground floor. (figure 11)	Reinforced concrete	
Pillar	Western facade (figure 9)	Base painted brown	
Brackets		Timber	
Cornice profiles	Fond on western facade and partly on northern and outhern facades,	Concrete	
Roof	All Builings on property	S-profile corrugated sheets	



Figure 7.1: Corner building down pipe
 Figure 7.2: Corner building stone plinth
 Figure 7.3: Corner building brick plinth
 Figure 7.4: Corner building front step
 Figure 7.6: Back court yard
 Figure 7.5: Concrete pavement in front of building
 Figure 7.7: Corner building timber window
 Figure 7.8: Aluminium first floor window
 Figure 7.9 Southern building timber door
 Figure 7.10: Corner building timber back door
 Figure 7.11: Ground floor column in cash loan shop
 Figure 7.12: Timber bracket
 Figure 7.13: Top of down pipe and Cornice profile
 Figure 7.14: Cornice profile and down pipe
 Figure 7.15: Birds-eye-view of Panagos Building



	WHERE	MATERIAL	DESCRIPTION
Interior Finishes:	Ground floor		
Mzintho's Kitchen (Corner building)	Floor (figure 19)	Ceramic tiles	300x300 Light grey & dark blue
	Wall (figure 16)	Painted plasterd	peach
		Wall tiles	Yellow with green leaf motif
	Skirting	Painted timber	200x18, Dark blue
	Ceiling (Figure 17)	Painted Oregon pine boards	white
	Decorative ceiling center (figure 17)	Painted pressed steel	Dark Blue
	Cornice	Painted timber	A water based white paint



7.16

7.17
7.18
7.19

Figure 7.16: Counter with mosaic finish and pendant lights
 Figure 7.17: Painted Oregon Pine ceiling with pressed steel decorative ceiling center
 Figure 7.18: Cornice detail
 Figure 7.19: 300 x 300 light grey and blue ceramic tiles

	WHERE	MATERIAL	DESCRIPTION
Muti shop (Southern building)	Floor	Vinyl floor tiles	Blue, yellow & green
	Wall	Plastered and painted brick	Light green
	Skirting	None	N/A
	Pillar	Plastered and painted brick	Light green
	Ceiling	Gypsum board	A water based white paint



figure 20

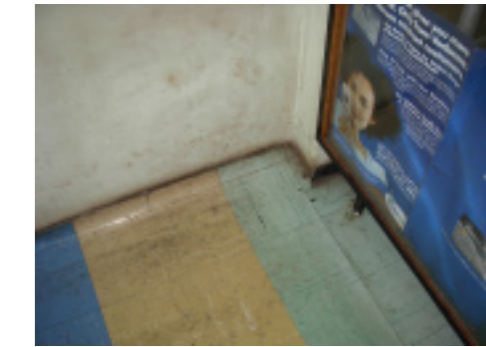


figure 21

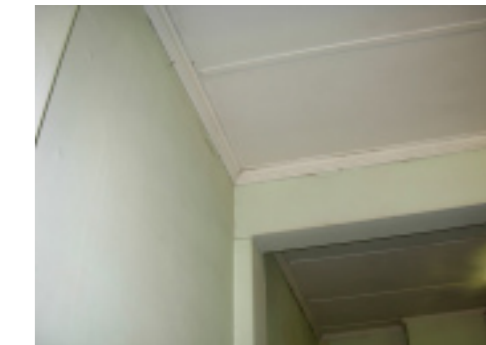
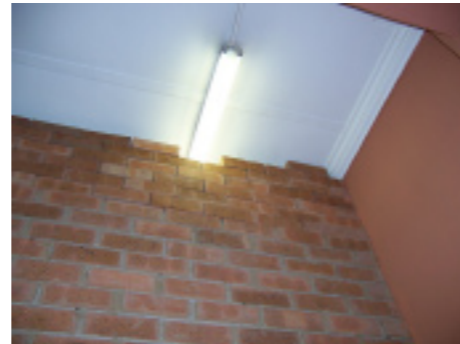


figure 22

7.20
7.21
7.22

Figure 7.20: Two beams and gypsum ceiling in Muti shop
 Figure 7.21: Vinyl floor and wall detail
 Figure 7.22: Cornice detail

	WHERE	MATERIAL	DESCRIPTION
Cash loans (Southern building)	Floor	Carpet tiles	Dark grey
	Wall	Plastered and painted brick	Peach
		Brick	later addition
	Skirting	Painted timber	108x18, peach
	Pillar	Plastered and painted rein- forced concrete	Peach
	Ceiling	Gypsum board	A water based white paint



7.24

7.25

7.26

Figure 7.23: The Cash loans shop where the original internal wall has been partially removed
 Figure 7.24: Detail of gypsum ceiling, original wall and brick curtain wall
 Figure 7.25: Timber window detail
 Figure 7.26: View of entrance

	WHERE	MATERIAL	DESCRIPTION
Storage (Southern building)	Floor	Wall-to wall carpet	Damaged Grey brown carpet
	Wall	Painted plaster	A water based peach coloured paint
	Skirting	none	n.a.
	Pillar	Painted Plaster	A water based white paint
	Ceiling	Gypsum board	A water based white paint
	Cornice	Painted timber	Painted with a white water-based paint



figure 27

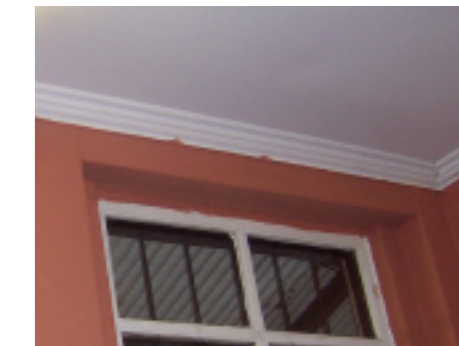


figure 28

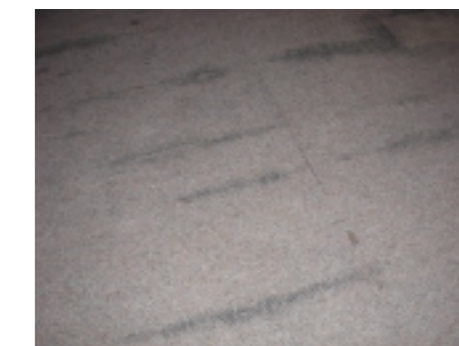


figure 29

7.27

7.28

7.29

Figure 7.27: Detail of pillar
 Figure 7.28: Detail of window and cornice
 Figure 7.29: Damaged carpets laid on uneven surface

	WHERE	MATERIAL	DESCRIPTION
Interior Finishes: First Floor			
Methodist church (Corner Building)	Floor	Carpet tiles layed on top of Oregon Pine floor boards	Grey-brown
	Wall	Painted plastered	A water based white paint
	Skirting	Painted timber	200x18 An oil based light grey paint
	Ceiling	Gypsum board	A water based white paint
	Cornice	Painted timber	PAinted with a light blue, oil-based paint



7.30

7.31
7.32
7.33

Figure 7.30: Church Hall on first floor of corner building
 Figure 7.31: Gypsum ceiling with trap door and fluorescent tube light fixture
 Figure 7.32: Skirting detail
 Figure 7.33: Dry wall and carpet detail

	WHERE	MATERIAL	DESCRIPTION
Appartments (Southern building)	Bedrooms and living area foors	Wall-to-wall carpets	various
	Kitchen floor	Ceramic floor tiles	150x150, White
	Wall: Living area : Bedroom	Water based paint	: White : Yellow
	Skirting	Painted timber	200x18, Pale blue
	Ceiling	Gypsum board	Painted with a white waterbased paint
	Cornice	Painted Timber	Painted with an oil-based light blue paint



7.34

7.35
7.36
7.37

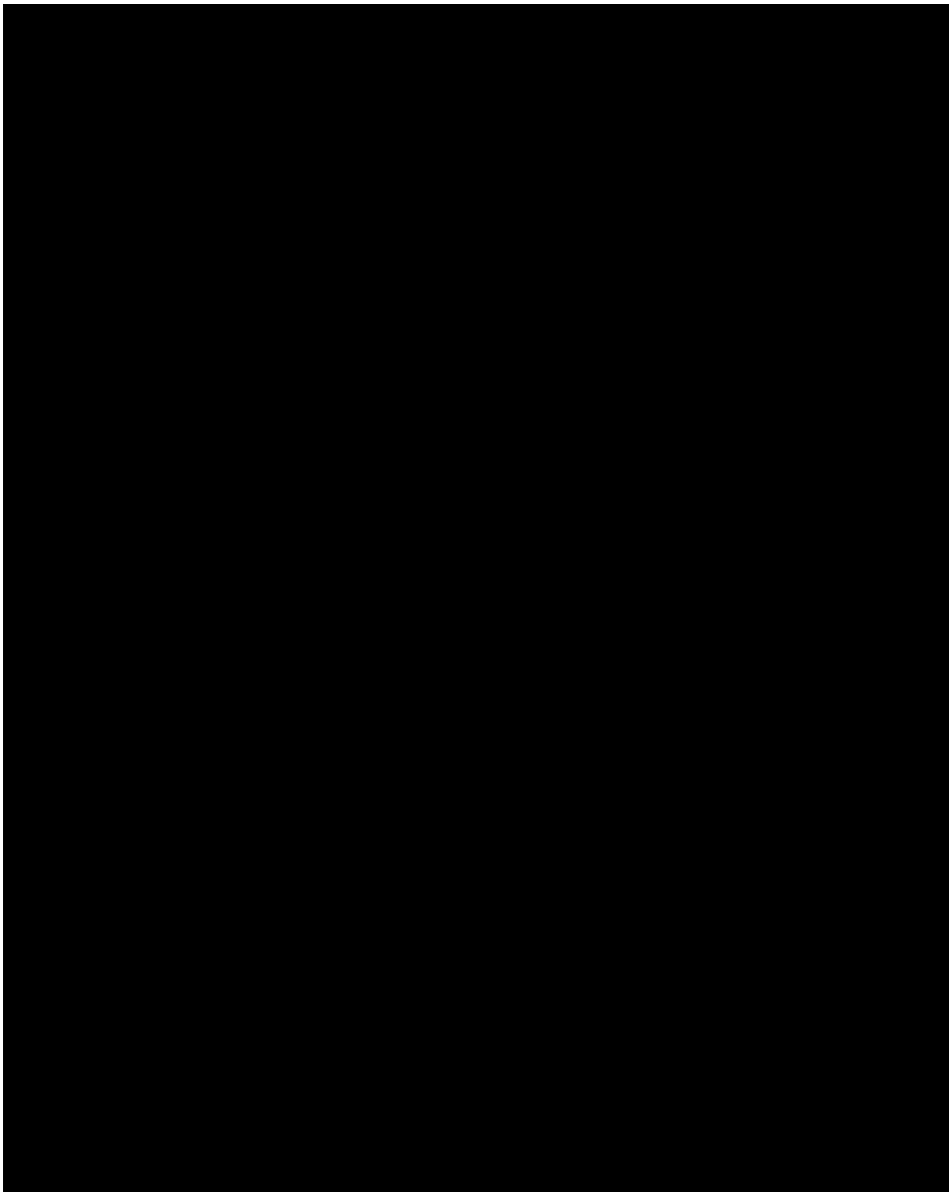
Figure 7.34: Living area of pastors apartment
 Figure 7.35: Detail of where two carpets meet
 Figure 7.36: Oregon Pine ceiling in bathroom
 Figure 7.37: Kitchen in apartment

Maano website

The mini disk contains a simulation of the Maano website that was discussed in Chapter 6.4.

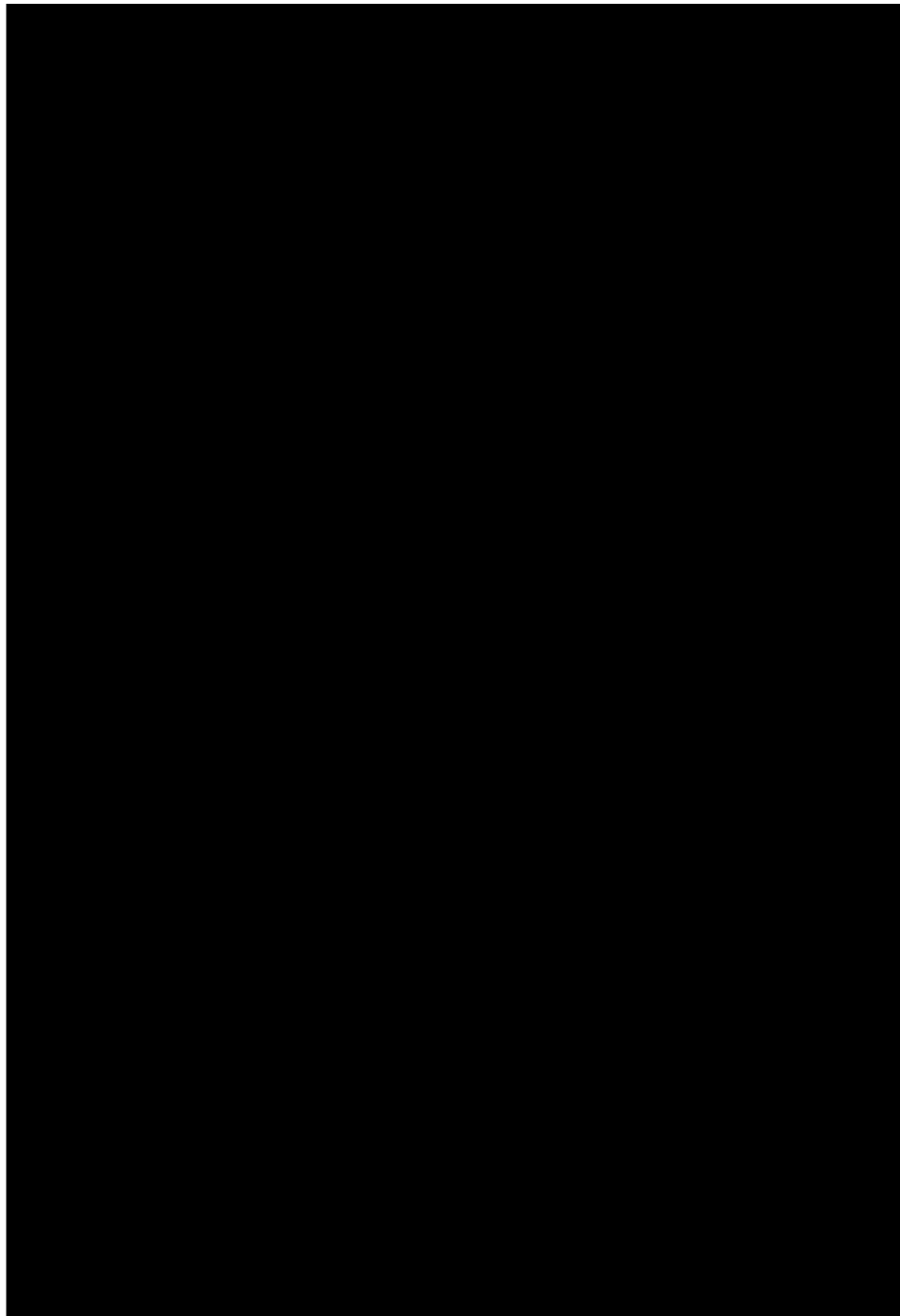


Schedules



- 8.1
- 8.2
- 8.3

Figure 8.1: W1-Aluminium frame window on first floor
 Figure 8.2: W4- Original timber frame window of corner building
 Figure 8.3: W6- Original timber frame window of southern building



- 8.4
- 8.5
- 8.6

Figure 8.4: D7- Original timber double door
 Figure 8.5: D4- Original timber door and window
 Figure 8.6: D1- Aluminium folding doors

List of illustrations

Chapter 1

- Figure 1.1: **Pretoria CBD*. 2007. Pretoria, South Africa.
 Figure 1.2: **View of Union Buildings from Struben Street*. 2007. Pretoria, South Africa
 Figure 1.3: *Women making grass baskets*. www.africanhome.co.za. (20/05/2007)
 Figure 1.4: **Men making wire ornaments*. 2007. Eighteenth Avenue, Pretoria
 Figure 1.5: **Site plan of educational institutions in the immediate context of the Panagos Building*. 2007. Pretoria, South Africa
 Figure 1.6: Panagos, D. 1939. *Corner view of Panagos Building*. Pretoria, South Africa

Chapter 2

- Figure 2.1: **Educational institutions in Pretoria CBD*. 2007. Pretoria, South Africa
 Figure 2.2: **SA War College on Struben Street*. 2007. Pretoria, South Africa
 Figure 2.3: **Panagos Building with Telkom Towers behind*. 2007. Pretoria, South Africa.
 Figure 2.4: **Heritage buildings in the immediate context of the Panagos Building*. 2007. Pretoria, South Africa
 Figure 2.5: **Old Jewish Synagogue on Paul Kruger Street*. 2007. Pretoria, South Africa
 Figure 2.6: **Jansen House*. 2007. Pretoria, South Africa
 Figure 2.7: *National Library Head office*. (Le Roux 1991:19)
 Figure 2.8: **Use of buildings in the immediate context of the Panagos Building*. 2007. Pretoria, South Africa
 Figure 2.9: *James Hall Transport Museum*. 1922. Tram on Paul Kruger Street. Johannesburg
 Figure 2.10: **Urban proposal for immediate context of Panagos Building, Pretoria, South Africa. 2007*
 Figure 2.11: **Timeline illustrating the life of the Panagos Building*. 2007
 Figure 2.12: **Redrawn plans from Tshwane City Council for renovations on erf 102*. 4628/40 approved on 19 June 1940
 Figure 2.13: **Redrawn plans from Tshwane City Council for renovations on erf 102*. 7995/46 approved on 28 August 1946.

- Figure 2.14: ***Redrawn plans from Tshwane City Council for the building of a cold room on erf 102.** 3243/52 approved on 1 July 1952
 Figure 2.15: ***Evaluation of existing Panagos Building.** 2007. Pretoria, South Africa
 Figure 2.16: ***Collage of eastern, ground floor elevation of existing southern building.** 2007. Pretoria, South Africa
 Figure 2.17: ***South building column base.** 2007. Pretoria, South Africa
 Figure 2.18: ***Corner building column base.** 2007. Pretoria, South Africa
 Figure 2.19: Bray, S. **Panagos Building.** 1900s. Pretoria, South Africa
 Figure 2.20: ***Collage of eastern, ground floor elevation of existing corner building.** 2007. Pretoria, South Africa

Chapter 3

- Figure 3.1: ***Site plan. Panagos Building's immediate surroundings**

Chapter 4

- Figure 4.1: ***Glass bead and wire aloe.** 2007. Eighteenth Avenue, Pretoria
 Figure 4.2: ***Men making wire ornaments.** 2007. Eighteenth Avenue, Pretoria
 Figure 4.3: **Glass bead bowl.** www.africanhome.co.za. (21/06/2007)
 Figure 4.4: **Wire protea candle holder.** www.africanhome.co.za. (21/06/2007)
 Figure 4.5: **Wire and bead baobab.** www.africanhome.co.za. (21/06/2007)
 Figure 4.6: **African craft20: wire table.** www.pingmag.net. (04/08/2007)
 Figure 4.7: **African craft08: buckskin handbag.** www.pingmag.net. (04/08/2007)
 Figure 4.8: **Scoobi and bead bracelet.** www.usisicraft.co.za. (22/04/2007)
 Figure 4.9: **Scoobi and recycled record handbag.** www.usisicraft.co.za. (22/04/2007)
 Figure 4.10: **Imiso ceramics: earring 1.** www.imisoceramics.co.za. (25/04/2007)
 Figure 4.11: **Imiso ceramics: earring 2.** www.imisoceramics.co.za. (25/04/2007)
 Figure 4.12: **NHD jewellery: twin round on chocolate suede choker.** www.nhd?. (10/08/2007)
 Figure 4.13: **NHD jewellery: round/one.** www.nhd?. (10/08/2007)
 Figure 4.14: Beads Entwined. **Bead board.** 2007. Pretoria
 Figure 4.15: **NHD bathroom: soap dish.** www.nhd?. (10/08/2007)
 Figure 4.16: **Imiso ceramics: tea set.** www.imisoceramics.co.za. (25/04/2007)
 Figure 4.17: **NHD sundry: piggy bank.** www.nhd?. (10/08/2007)
 Figure 4.18: **Egg and teaspoon holder.** www.africanhome.co.za. (20/05/2007)
 Figure 4.19: **NHD jewellery: round/two.** www.nhd?. (10/08/2007)
 Figure 4.20: **NHD jewellery: square/six.** www.nhd?. (10/08/2007)
 Figure 4.21: **NHD jewellery: one square on black suede choker.** www.nhd?. (10/08/2007)
 Figure 4.22: **Imiso ceramics: once off 8.** www.imisoceramics.co.za. (25/04/2007)
 Figure 4.23: **The Underberg Studio: vase 3.** www.underbergstudio.co.za. (10/08/2007)
 Figure 4.24: **The Underberg Studio: vase 4.** www.underbergstudio.co.za. (10/08/2007)
 Figure 4.25: **African craft 18b: vase.** www.pingmag.net. (04/08/2007)
 Figure 4.26: Nettleton. **Umgexo (medicine necklace) of glass beads and test tubes 9 cm x 66 cm.** 2003:52

- Figure 4.27: Nettleton. **Tsonga-Shangana, South Africa nceka (shoulder wrap-over cloth) textile and safety pins.** 2003:53
 Figure 4.28: **Button wall light.** www.usisicraft.co.za. (22/04/2007)
 Figure 4.29: **African craft09: handbag.** www.pingmag.net. (04/08/2007)
 Figure 4.30: **African craft07: recycled plastic bag ottoman.** www.pingmag.net. (04/08/2007)
 Figure 4.31: Nettleton. **Xhosa (fringo), South Africa textile with beads, buttons and embroidery.** 2003:55

Chapter 5

- Figure 5.1: ***Kim Sacks.** 2007. **Grass baskets.** Johannesburg
 Figure 5.2: ***Kim Sacks.** 2007. **Kim Sacks's white ceramics.** Johannesburg
 Figure 5.3: ***Kim Sacks.** 2007. **Headrest and bead necklace.** Johannesburg
 Figure 5.4: ***Kim Sacks.** 2007. **Ceramics, mirrors and wall hanging.** Johannesburg
 Figure 5.5: ***Kim Sacks.** 2007. **Shelley Mailsel ceramics on glass shelf.** Johannesburg
 Figure 5.6: ***Kim Sacks.** 2007. **Shelf display.** Johannesburg
 Figure 5.7: ***Kim Sacks.** 2007. **Ivory bangles.** Johannesburg
 Figure 5.8: ***Kim Sacks.** 2007. **Ivory bangles.** Johannesburg
 Figure 5.9: ***Kim Sacks.** 2007. **Artvark cutlery display.** Johannesburg
 Figure 5.10: ***Kim Sacks.** 2007. **Kim Sacks's white ceramics in glass display case.** Johannesburg
 Figure 5.11: ***Kim Sacks.** 2007. **Bead baskets.** Johannesburg
 Figure 5.12: ***Kim Sacks.** 2007. **Beads.** Johannesburg
 Figure 5.13: ***Kim Sacks.** 2007. **Katherine Glenday ceramic display.** Johannesburg
 Figure 5.14: ***Delogo.** 2007. **Stacking display tables on castor wheels.** Pretoria
 Figure 5.15: ***Delogo.** 2007. **Pay counter.** Pretoria
 Figure 5.16: ***Delogo.** 2007. **Various bowls.** Pretoria
 Figure 5.17: ***Delogo.** 2007. **Ceiling display.** Pretoria
 Figure 5.18: ***Earth, Fire and Ice.** 2007. **Crystal balls.** Johannesburg: Monte Casino
 Figure 5.19: ***Earth, Fire and Ice.** 2007. **Lockable cabinets.** Johannesburg: Monte Casino
 Figure 5.20: ***Earth, Fire and Ice.** 2007. **Cantilever shelves.** Johannesburg: Monte Casino
 Figure 5.21: ***Earth, Fire and Ice.** 2007. **Built-in display.** Johannesburg: Monte Casino
 Figure 5.22: ***Earth, Fire and Ice.** 2007. **Display table.** Johannesburg: Monte Casino
 Figure 5.23: ***Earth, Fire and Ice.** 2007. **Diagram showing the shop layout.** Johannesburg: Monte Casino
 Figure 5.24: ***Sally Buttons.** 2007. **Display window.** Pretoria: Woodlands Mall
 Figure 5.25: **Various mannequins.** www.thecoolhunter.net. (19/07/2007)
 Figure 5.26: ***Accessorize.** 2007. **Foam dog head.** Pretoria: Woodlands Mall
 Figure 5.27: ***Beads entwined.** 2007. **Indonesian hand mannequin.** Pretoria
 Figure 5.28: ***Beads entwined.** 2007. **Indonesian bust mannequin.** Pretoria
 Figure 5.29: ***Big Blue.** 2007. **Glass display counter.** Johannesburg: Monte Casino
 Figure 5.30: ***Big Blue.** 2007. **Glass display counter.** Johannesburg: Monte Casino
 Figure 5.31: ***Big Blue.** 2007. **Laser cut, powder coated, steel tree.** Johannesburg: Monte Casino
 Figure 5.32: ***Big Blue.** 2007. **Plastic hand mannequins.** Johannesburg: Monte Casino
 Figure 5.33: **Wire clothes hanger.** www.shelving2000.co.za. (02/06/2007)

- Figure 5.34: *Pearl clothes hanger*. www.tassels.co.za. (18/07/2007)
 Figure 5.35: *Laser-cut cityscape clothes hanger*. www.thecoolhunter.net. (19/07/2007)
 Figure 5.36: Russell. Reichstag parliament building, Germany. *Graffiti of Russian soldiers*. 1999:104
 Figure 5.37: Russell. Reichstag parliament building, Germany. *After World War II*. 1999:103
 Figure 5.38: Reichstag parliament building, Germany. *Glass dome ans skylight*. www.voyages-photos.fr/berlin/eberlin2.htm. (06/05/2007)
 Figure 5.39: Reichstag parliament building, Germany. *Entrance*. www.jpgmag.com. (06/05/2007)
 Figure 5.40: Reichstag parliament building, Germany. *Glass dome at night*. www.jpgmag.com. (06/05/2007)

Chapter 6

- Figure 6.1: **Site plan of Panagos Building*. 2007
 Figure 6.2: **Plan of Panagos Building*. 2007
 Figure 6.3: **Demolision plan*. 2007
 Figure 6.4: **Experimentations with wire*. 2007
 Figure 6.5: **Various font styles*. 2007
 Figure 6.6: **First branding concept: Post card hand out*. 2007
 Figure 6.7: **Second branding concept: Business card hand out and fashion label*. 2007
 Figure 6.8: **Final branding concept*. 2007
 Figure 6.9: **Merchandise label cut out with fold and cut lines*. 2007
 Figure 6.10: **Final Business card and handout card design*. 2007
 Figure 6.11: **Maano website*. 2007
 Figure 6.12: **Track system detail*. 2007
 Figure 6.13: **Hanger on truss detail*. 2007
 Figure 6.14: *Components*. 1998. Hillaldam sliding door system's catalogue.
 Figure 6.15: **Hillaldam 400 sliding door track attached to channel beam*. 2007
 Figure 6.16: **Travelling column on Hillaldam 400 sliding door track system*. 2007
 Figure 6.17: *Components of the LTS low-voltage pendant and track lights*. 2001. LTS catalogue. p.17 & 33
 Figure 6.18: **Clothing rail light on hangers*. 2007
 Figure 6.19: *Components of the Hafele rail light*. 2000. Hafele catalogue. p.1688
 Figure 6.20: *LTS fastener 2*. 2001. LTS catalogue. p.30
 Figure 6.21: **Concept wire coat hangers*. 2007
 Figure 6.22: **Corner detail of one of the first wire and bead clothes hanger model's*. 2007
 Figure 6.23: **Joint detail of one of the first wire and beads clothes hanger model's*. 2007
 Figure 6.24: **Wire coat hangers for fashion display with coloured glass beads corrulating with merchandise labels*
 Figure 6.25: **Elongated wire coat hangers on track system*. 2007
 Figure 6.26: **Electrical plan*. 2007
 Figure 6.27: **Various backboards used to best display merchandise*. 2007
 Figure 6.28: **Concept sketches of th use of light with the display screens*. 2007
 Figure 6.29: **Display screen infront of window from inside the building and from the street*. 2007
 Figure 6.30: **Accessories for the display screen that hook onto the wire mesh*. 2007
 Figure 6.31: **Technical drawings for the construction of the sliding screens*. 2007

- Figure 6.32: **Screen detail of backboard being fixed into place*. 2007
 Figure 6.33: *Hafele M4 screw and sleeve*. 2000. Hafele catalogue. p.11
 Figure 6.34: **Display screen on track detail*. 2007
 Figure 6.35: *Components of the Hillaldam 200 sliding door top track system*. 1998. Hillaldam sliding door system's catalogue.
 Figure 6.36: **Display screen on bottom channel*. 2007
 Figure 6.37: *Components of the Hillaldam sliding door bottom channel system*. 1998. Hillaldam sliding door system's catalogue.
 Figure 6.38: **Book corner in Maano*. 2007
 Figure 6.39: **Pattern found on textiles from Ghana*. 2007
 Figure 6.40: **Concept model indicating shelves in pattern*. 2007
 Figure 6.41: **Conceptual model showing formal and informal shelf configurations*. 2007
 Figure 6.42: **Diagram showing the Hafele Deco-wall with custom-made connector pannels*. 2007
 Figure 6.43: **Custom made top shelf and slidding shelves*. 2007
 Figure 6.44: **Hafele sliding ladder with track*. 2007
 Figure 6.45: **Hafele sliding ladder system*. 2007
 Figure 6.46: *Components of the Hafele sliding ladder system*. 2000. Hafele catalogue. p.1565.
 Figure 6.47: **Section A-A*
 Figure 6.48: **New ground floor plan*
 Figure 6.49: **New first floor plan*

Appendix A

- Figure 7.1: **Panagos Building. 2007. Corner building's down pipe*. Pretoria
 Figure 7.2: **Panagos Building. 2007. Corner building's stone plinth*. Pretoria
 Figure 7.3: **Panagos Building. 2007. Corner building's brick plinth*. Pretoria
 Figure 7.4: **Panagos Building. 2007. Corner building's front step*. Pretoria
 Figure 7.6: **Panagos Building. 2007. Court yard behind the building*. Pretoria
 Figure 7.5: **Panagos Building. 2007. Concrete pavement in front of building*. Pretoria
 Figure 7.7: **Panagos Building. 2007. Timber window of corner building*. Pretoria
 Figure 7.8: **Panagos Building. 2007. Aluminium first floor window*. Pretoria
 Figure 7.9: **Panagos Building. 2007. Southern building timber door*. Pretoria
 Figure 7.10: **Panagos Building. 2007. Corner building timber back door*. Pretoria
 Figure 7.11: **Panagos Building. 2007. Ground floor column in cash loan shop*. Pretoria
 Figure 7.12: **Panagos Building. 2007. Timber bracket*. Pretoria
 Figure 7.13: **Panagos Building. 2007. Top of down pipe and Cornice profile*. Pretoria
 Figure 7.14: **Panagos Building. 2007. Cornice profile and down pipe*. Pretoria
 Figure 7.15: **Panagos Building. 2007. Birds-eye-view of Panagos Building*. Pretoria
 Figure 7.16: **Panagos Building. 2007. Counter with mosaic finish and pendant lights*. Pretoria
 Figure 7.17: **Panagos Building. 2007. Painted Oregon Pine ceiling with pressed steel decorative ceiling center*. Pretoria
 Figure 7.18: **Panagos Building. 2007. Cornice detail*. Pretoria
 Figure 7.19: **Panagos Building. 2007. 300 x 300 light grey and blue ceramic tiles*. Pretoria
 Figure 7.20: **Panagos Building. 2007. Two beams and gypsum ceiling in Muti shop*. Pretoria

- Figure 7.21: *Panagos Building. 2007. *Vinyl floor and wall detail*. Pretoria
 Figure 7.22: *Panagos Building. 2007. *Cornice detail*. Pretoria
 Figure 7.23: *Panagos Building. 2007. *The Cash loans shop where the original internal wall has been partially removed*. Pretoria
 Figure 7.24: *Panagos Building. 2007. *Detail of gypsum ceiling, original wall and brick curtain wall*. Pretoria
 Figure 7.25: *Panagos Building. 2007. *Timber window detail*. Pretoria
 Figure 7.26: *Panagos Building. 2007. *View of entrance*. Pretoria
 Figure 7.27: *Panagos Building. 2007. *Detail of pillar*. Pretoria
 Figure 7.28: *Panagos Building. 2007. *Detail of window and cornice*. Pretoria
 Figure 7.29: *Panagos Building. 2007. *Damaged carpets laid on uneven surface*. Pretoria
 Figure 7.30: *Panagos Building. 2007. *Church Hall on first floor of corner building*. Pretoria
 Figure 7.31: *Panagos Building. 2007. *Gypsum ceiling with trap door and fluorescent tube light fixture*. Pretoria
 Figure 7.32: *Panagos Building. 2007. *Timber skirting detail*. Pretoria
 Figure 7.33: *Panagos Building. 2007. *Dry wall and carpet detail*. Pretoria
 Figure 7.34: *Panagos Building. 2007. *Living area of pastors apartment*. Pretoria
 Figure 7.35: *Panagos Building. 2007. *Detail of the joint where two carpets meet*. Pretoria
 Figure 7.36: *Panagos Building. 2007. *Oregon Pine ceiling in first floor bathroom of southern building*. Pretoria
 Figure 7.37: *Panagos Building. 2007. *Kitchen in first floor apartment*. Pretoria

Appendix D

- Figure 8.1: *Panagos Building. 2007. *W1-Aluminium frame window on first floor*. Pretoria
 Figure 8.2: *Panagos Building. 2007. *W4- Original timber frame window of corner building*. Pretoria
 Figure 8.3: *Panagos Building. 2007. *W6- Original timber frame window of southern building*. Pretoria
 Figure 8.4: *Panagos Building. 2007. *D7- Original timber double door*. Pretoria
 Figure 8.5: *Panagos Building. 2007. *D4- Original timber door and window*. Pretoria
 Figure 8.6: *Panagos Building. 2007. *D1- Aluminium folding doors*. Pretoria

*All photo's, illustrations and renderings in this dissertation are original work by the author unless otherwise specified.

References

Chapter 1

- 1.1 Anonymous. *Personal interview with taxi driver*. March 2007
 1.2 Anonymous. *Personal interview with vendor*. March 2007
 1.3 Cairncross, B. 2001. *First Field Guide to Gemstones of Southern Africa*. Struik Publishers: South Africa.
 1.4 D'angelo, A. *SA to polish up on jewellery production*. <http://www.busrep.co.za>. (12/03/2007)
 1.5 Dinallo, N & Squire, L. (Editors) Frampton, K. 2005. *Globalization and Equity: Perspective from the Developing World*. Cheltenham, UK, North Hampton, MA, USA, Edward Elgar Publishing, Inc.

Chapter 2

- 2.1 Diamini, N. *Mobile fresh produce market in Diepsloot*. http://www.joburg.org.za/2005/jul/jul6_market.stm. (19/04/2007)
 2.2 Le Roux, S. 1991. *Plekke en Geboue van Pretoria: n Oorsig van hulle argitektonies en stedelike belang*. Edited by N.Botes. 2nd ed. Pretoria: City Council of Pretoria
 2.3 Ligthelm. 2005. *Informal Markets in Tshwane: Entrepreneurial Incubators or Survivalist Reservoirs?* Bureau of Market Research
 2.4 Ligthelm. 2004. *Size, Structure and Profile of the Informal Retail Sector in South Africa*. Bureau of Market Research
 2.5 Meiring, H. 1980. *Pretoria 125*. Translated by W. de Kock. Pretoria: Human and Rousseau
 2.6 Panagos, D. *Personal interview*. April 2007

Chapter 3

- 3.1 *Zoning certificate: Remainder and portion of erf 102 Pretoria Central, Pretoria town planning scheme, 1974*. 2007. Tshwane city council: Department of Housing, City Planning and Environmental Management

Chapter 4

- 4.1 Fisher, A. 1992. *Africa Adorn*. Collins Harvill: London
 4.2 African crafts. www.pingmag.net. (04/08/2007)

- 4.3 African home: background information. www.africanhome.co.za. (17/03/2007)
- 4.4 Nettleton, A., Charlton, J. & Rankin-Smith, F. 2003. *Engaging Modernities: Transformations of the common place*. Johannesburg: The University of the Witwatersrand

Chapter 5

- 5.1 Russell, J.S. 1999. *With his sleek, ecological design, Lord Norman Foster imbues the Reichstag with Germany's new self-image*. Architectural Record. July 1999: vol. 187: no. 7: 102 - 113

Chapter 6

- 6.1 Fisher, A. 1992. *Africa Adorn*. Collins Harvill: London
- 6.2 *Hafele catalogue*. 2000. University of Pretoria: Department of Engineering, Built Environment and Information Technology
- 6.3 *Hillaldam sliding door systems catalogue*. 1998. University of Pretoria: Department of Engineering, Built Environment and Information technology
- 6.4 *LTS catalogue*. 2001. University of Pretoria: Department of Engineering, Built Environment and Information Technology