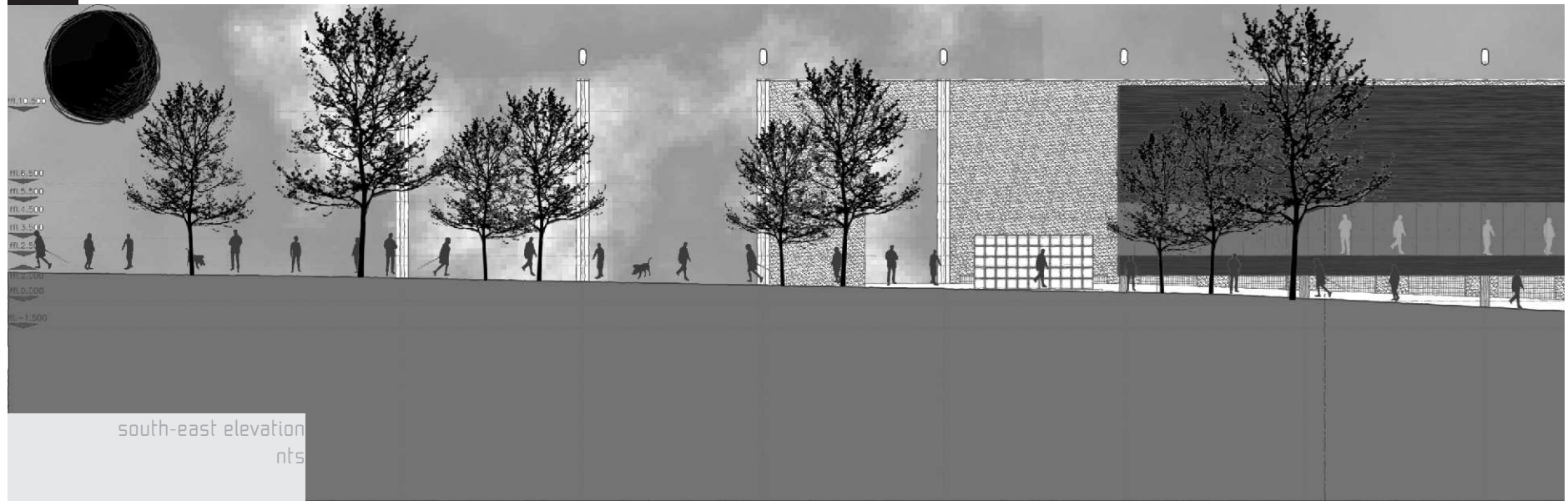
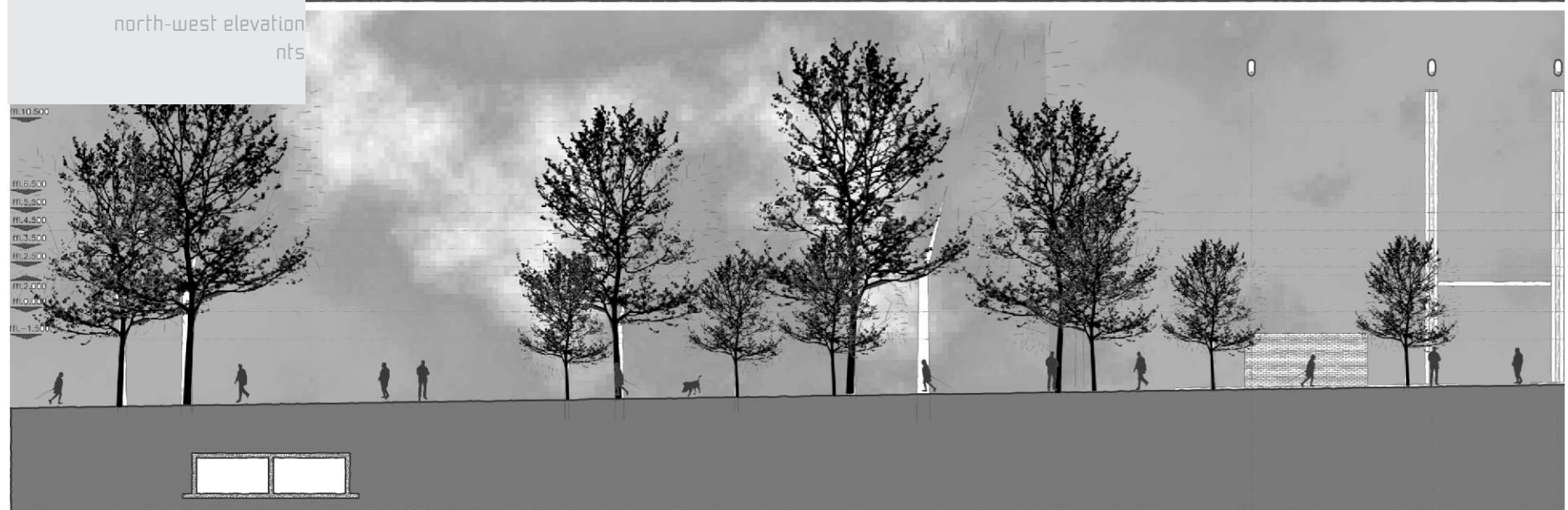




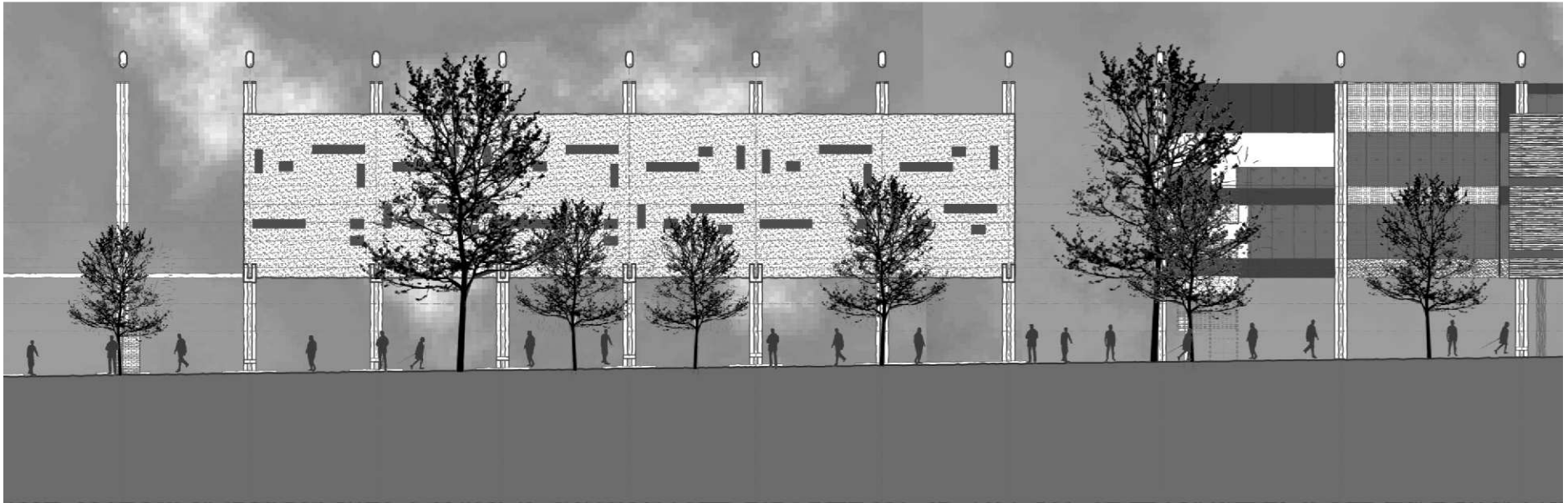
10-21



south-east elevation
nts

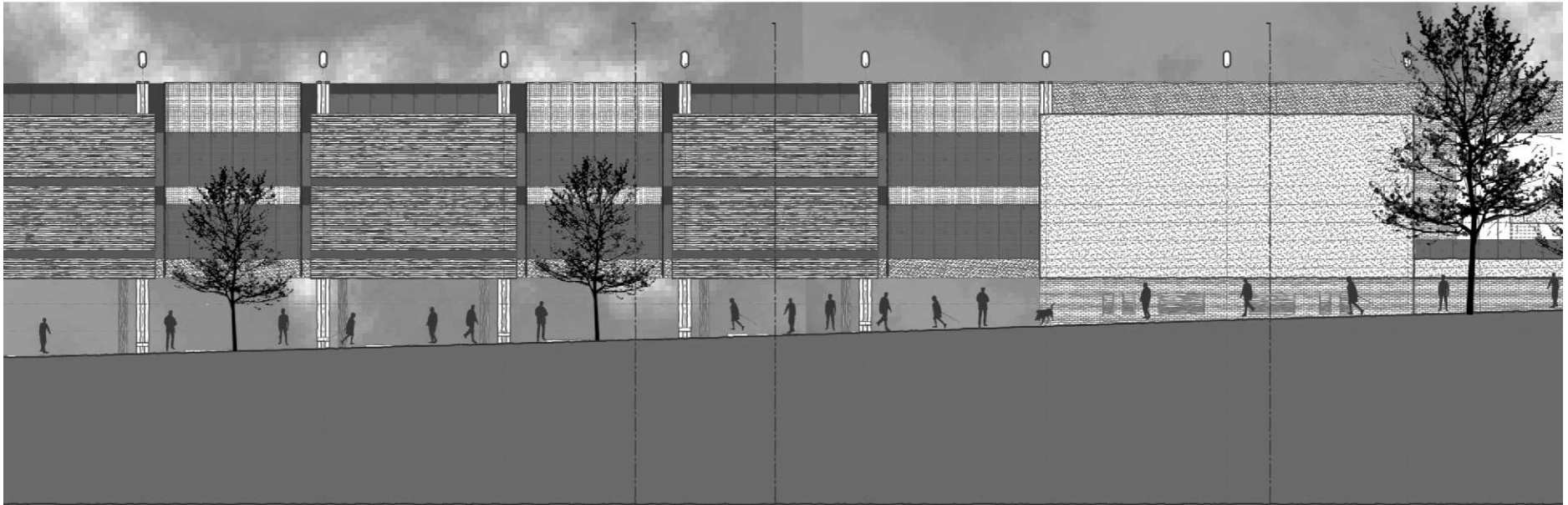
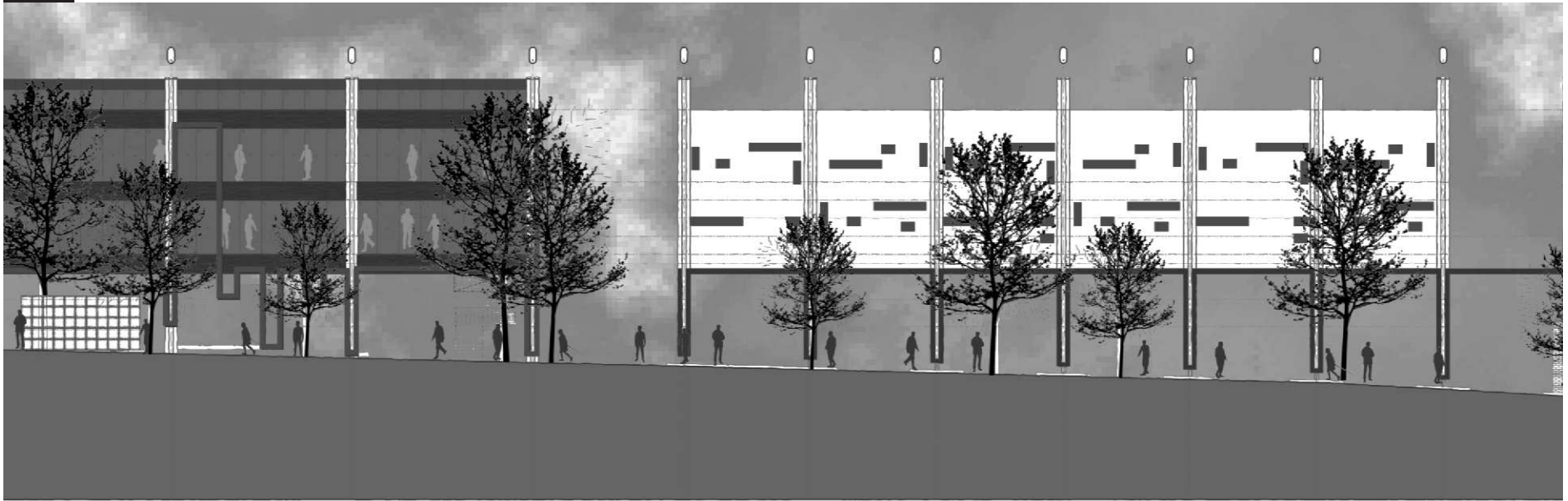


north-west elevation
nts



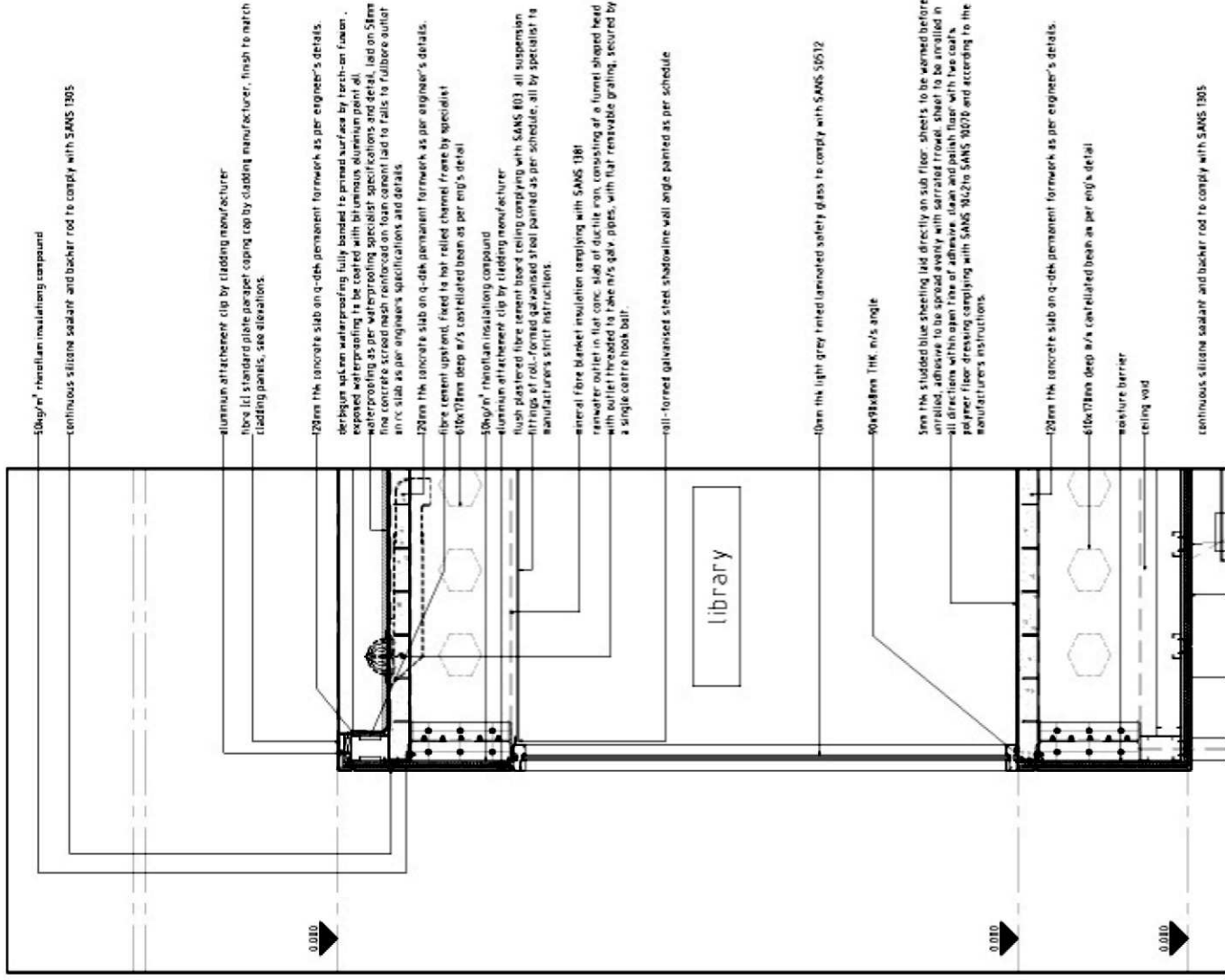


10-23





detail 001
scale 1-20



10kg/m³ mineral insulating compound

continuous silicone sealant and backer rod to comply with SANS 1305

aluminum attachment clip by cladding manufacturer

fibres 14 standard plate parapet coping cap by cladding manufacturer, finish to match cladding panels, see elevations.

0.010

20mm fibre cement board on q-dek permanent formwork as per engineer's details.

derivative splash waterproofing fully bonded to primed surface by torch-on fusion. exposed waterproofing to be coated with translucent aluminium paint oil waterproofing as per waterproofing specialist specifications and detail, laid on 50mm fine concrete screed neatly reinforced on foam concrete base for falls to rubble area outer in x/s slab as per engineer's specifications and details.

20mm fibre cement board on q-dek permanent formwork as per engineer's details.

fibre cement optional, fixed to hot rolled channel frame by specialist

60kg/m³ mineral insulating compound

aluminum attachment clip by cladding manufacturer

flush plastered fibre cement board ceiling complying with SANS 803 all suspension fittings of roll-formed galvanized steel painted as per schedule, all by specialist to manufacturers' strict instructions.

mineral fibre blanket insulation complying with SANS 1581
rainwater outlet in flat conc. slab of ductile iron, consisting of a funnel shaped head with outlet threaded to 100mm gully pipes, with flat removable grating, secured by a single centre hook ball.

roll-formed galvanized steel shadowline wall angle painted as per schedule

10mm the light grey tinted laminated safety glass to comply with SANS 50512

90x90x8mm 11kg m/s angle

See the studied blue sheeting laid directly on sub floor. Sheets to be warmed before unrolled, adhesive to be spread evenly with serrated trowel, sheet to be installed in all directions within open time of adhesive. Clean and patch floor with two coats polymer floor dressing complying with SANS 162/16 SANS 162/16 and according to the manufacturer's instructions.

0.010

20mm fibre cement board on q-dek permanent formwork as per engineer's details.

60kg/m³ mineral insulating compound

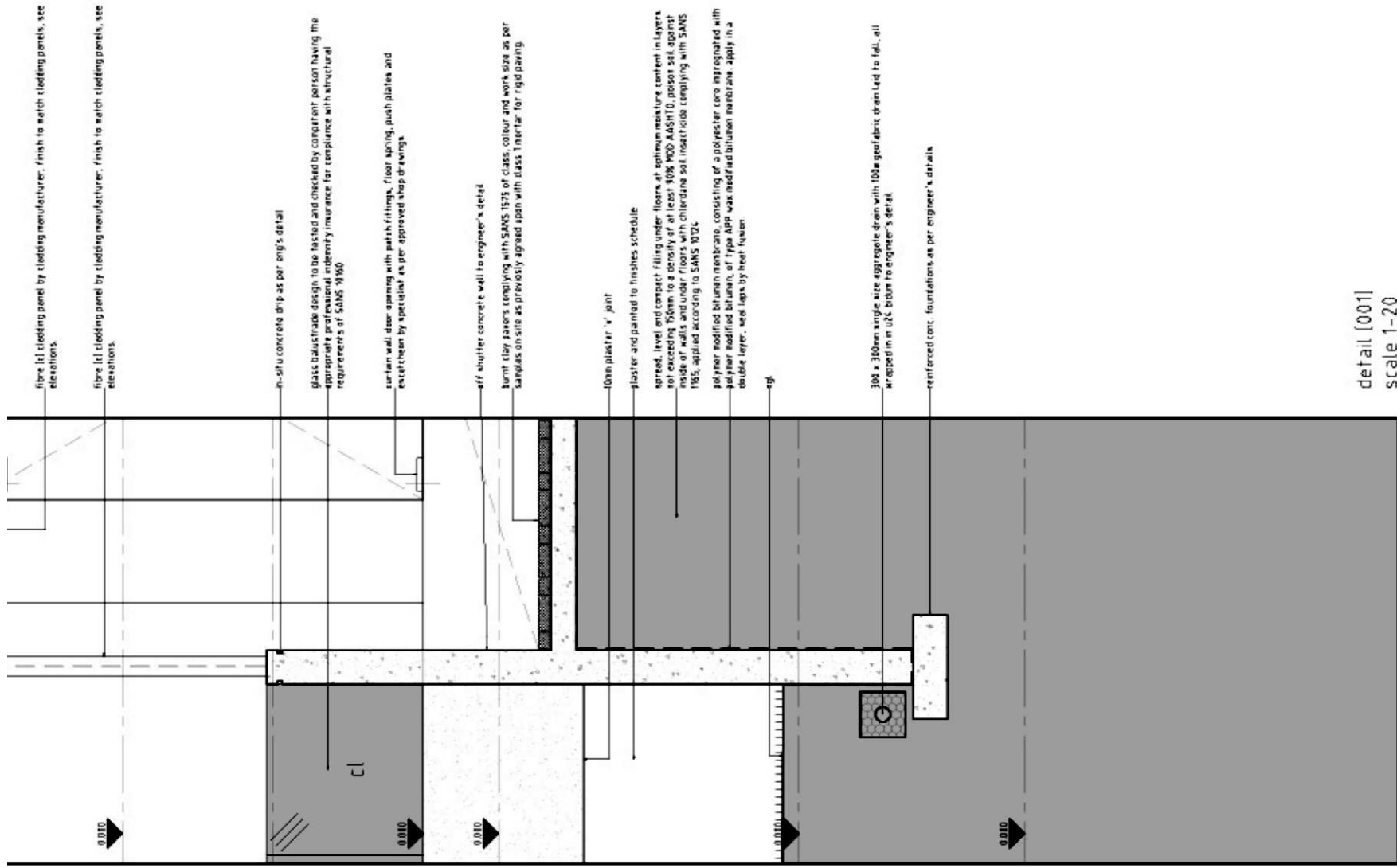
moisture barrier

ceiling void

0.010

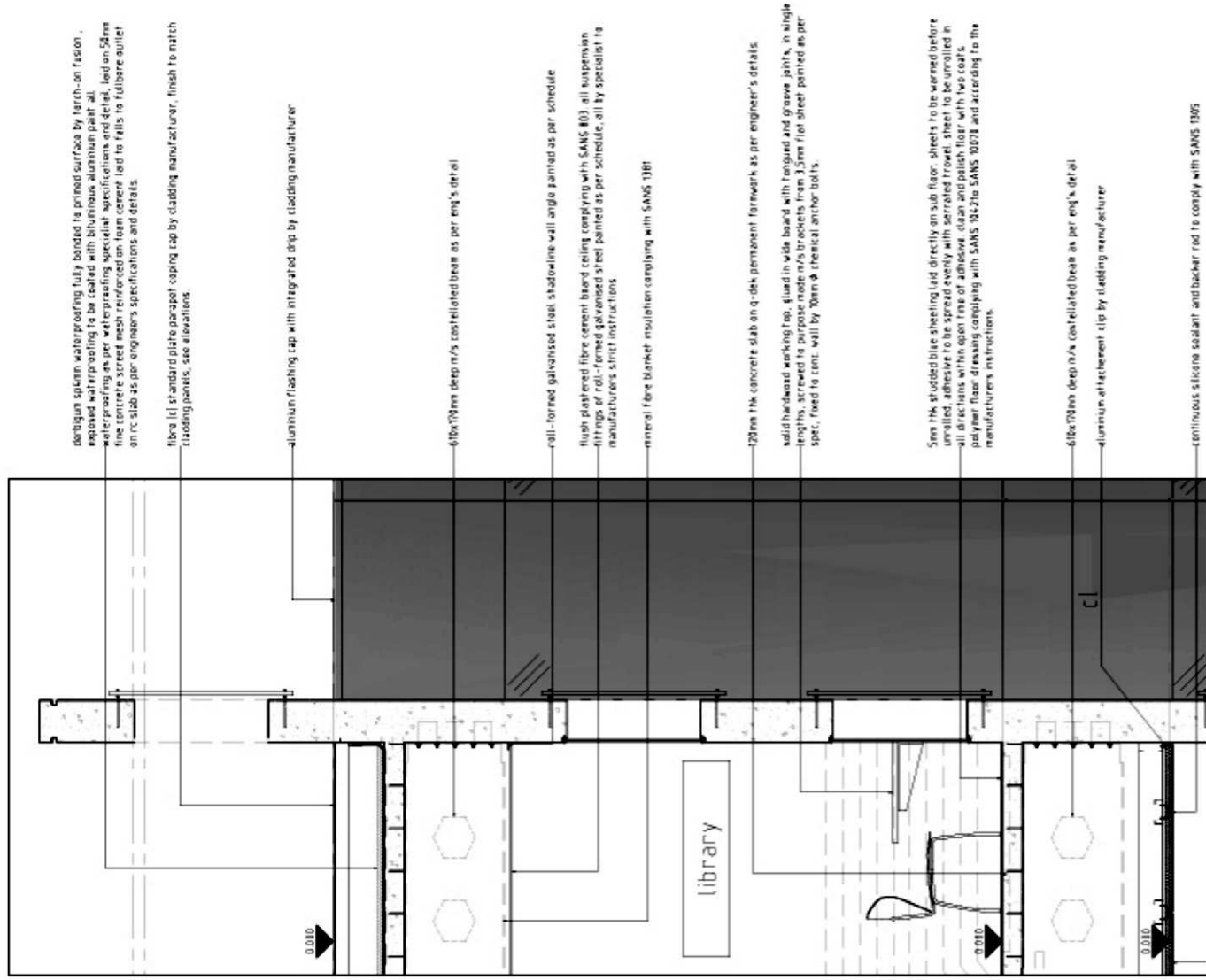
continuous silicone sealant and backer rod to comply with SANS 1305

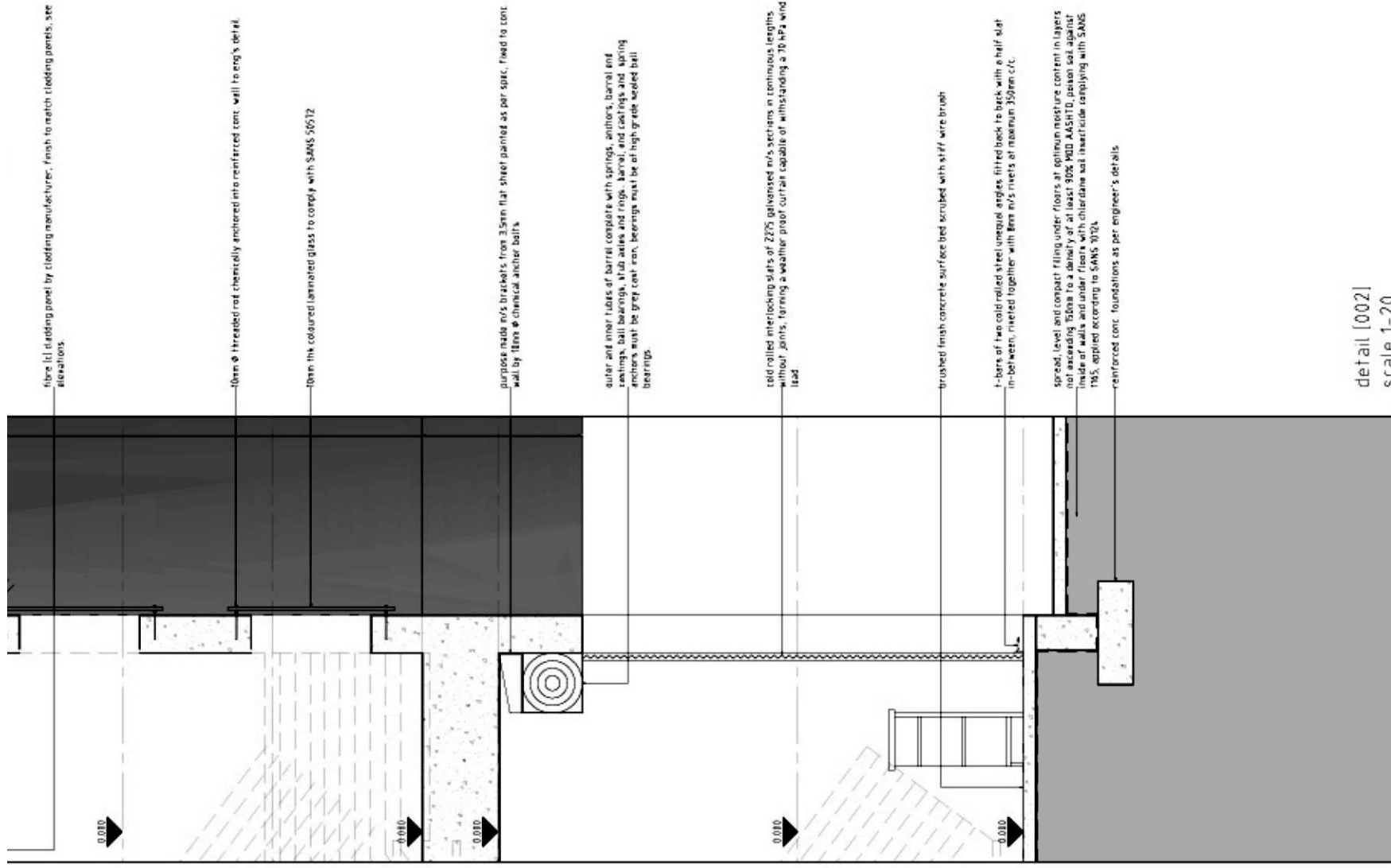




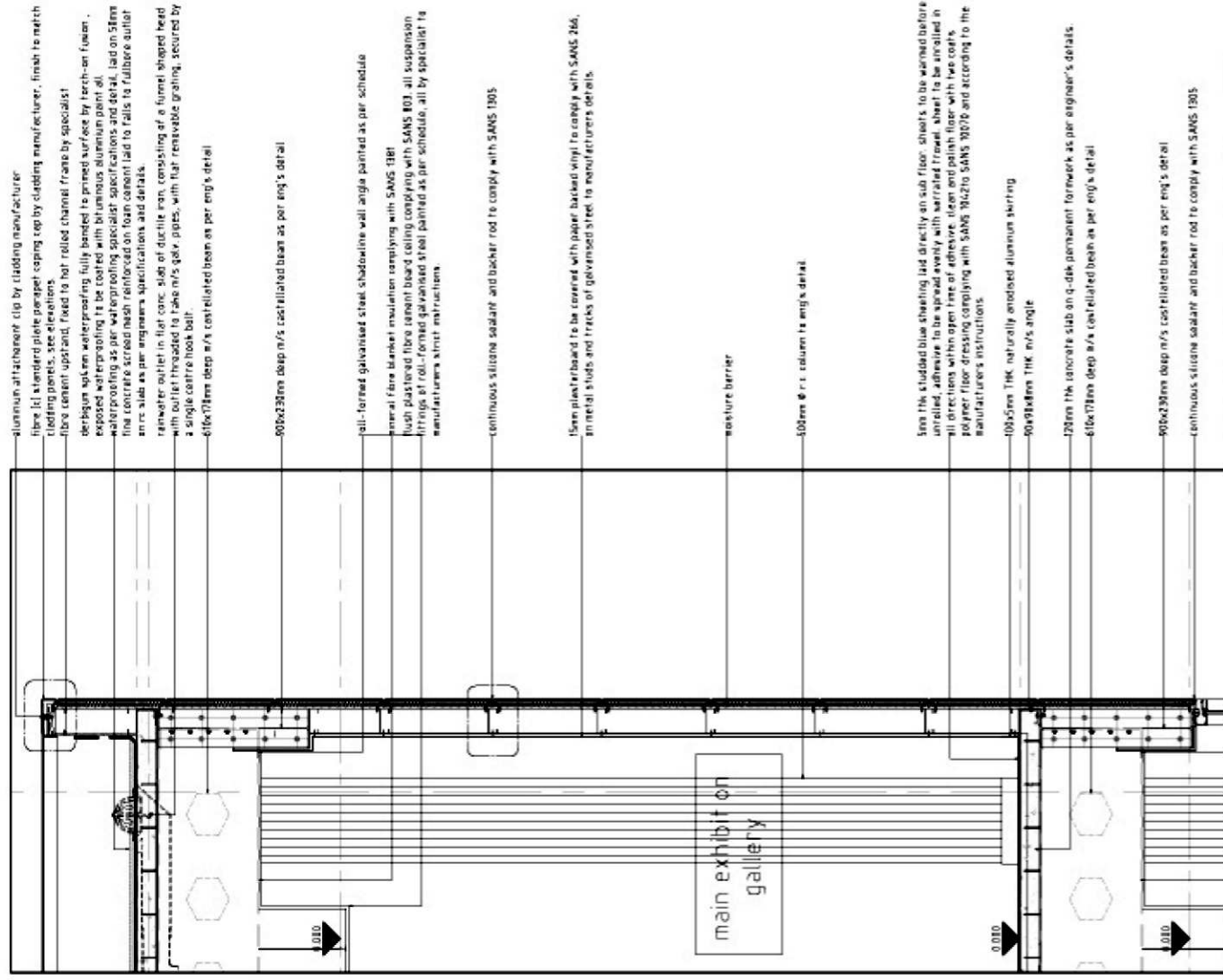
detail [001]
scale 1-20

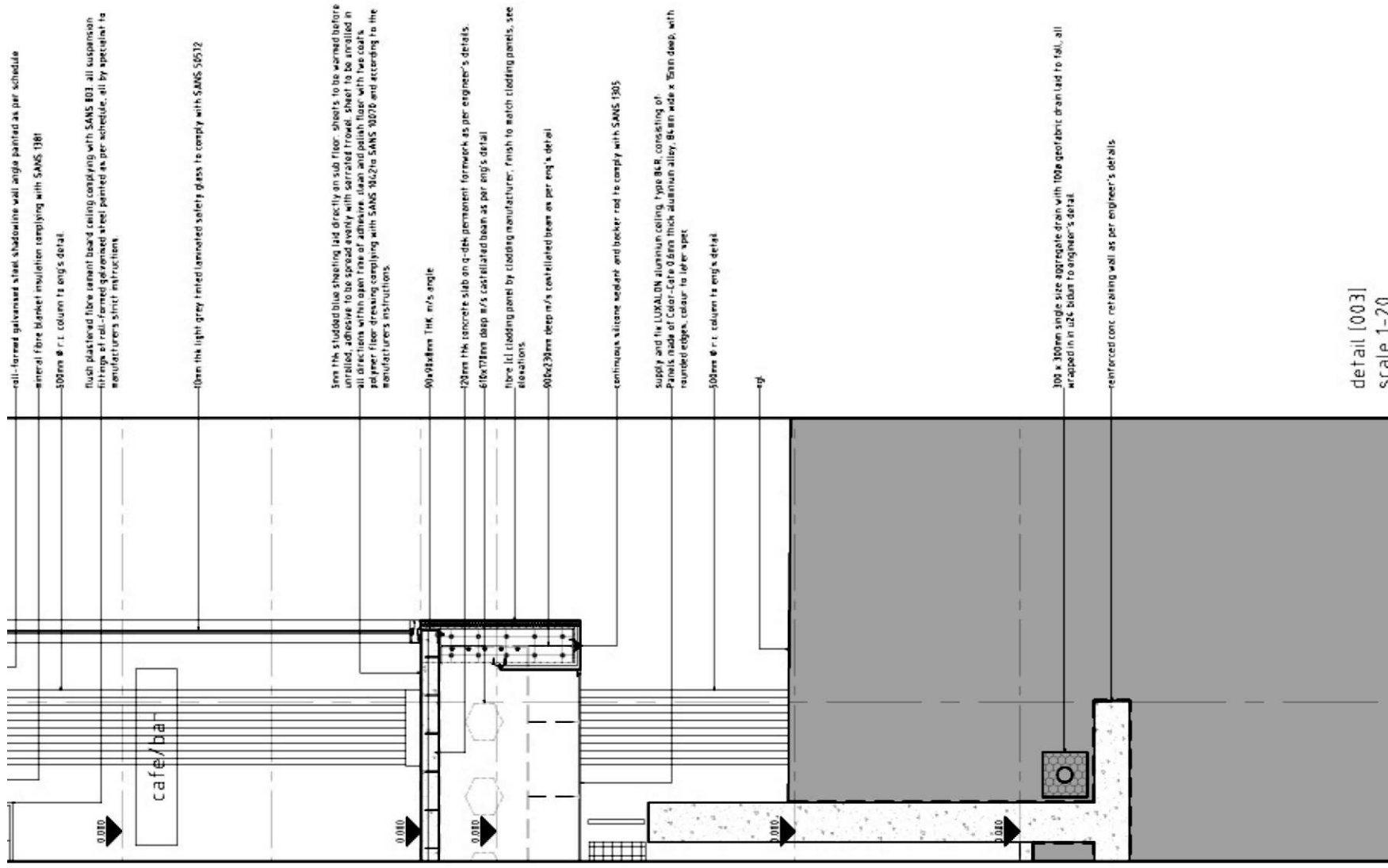
detail 002
scale 1-20





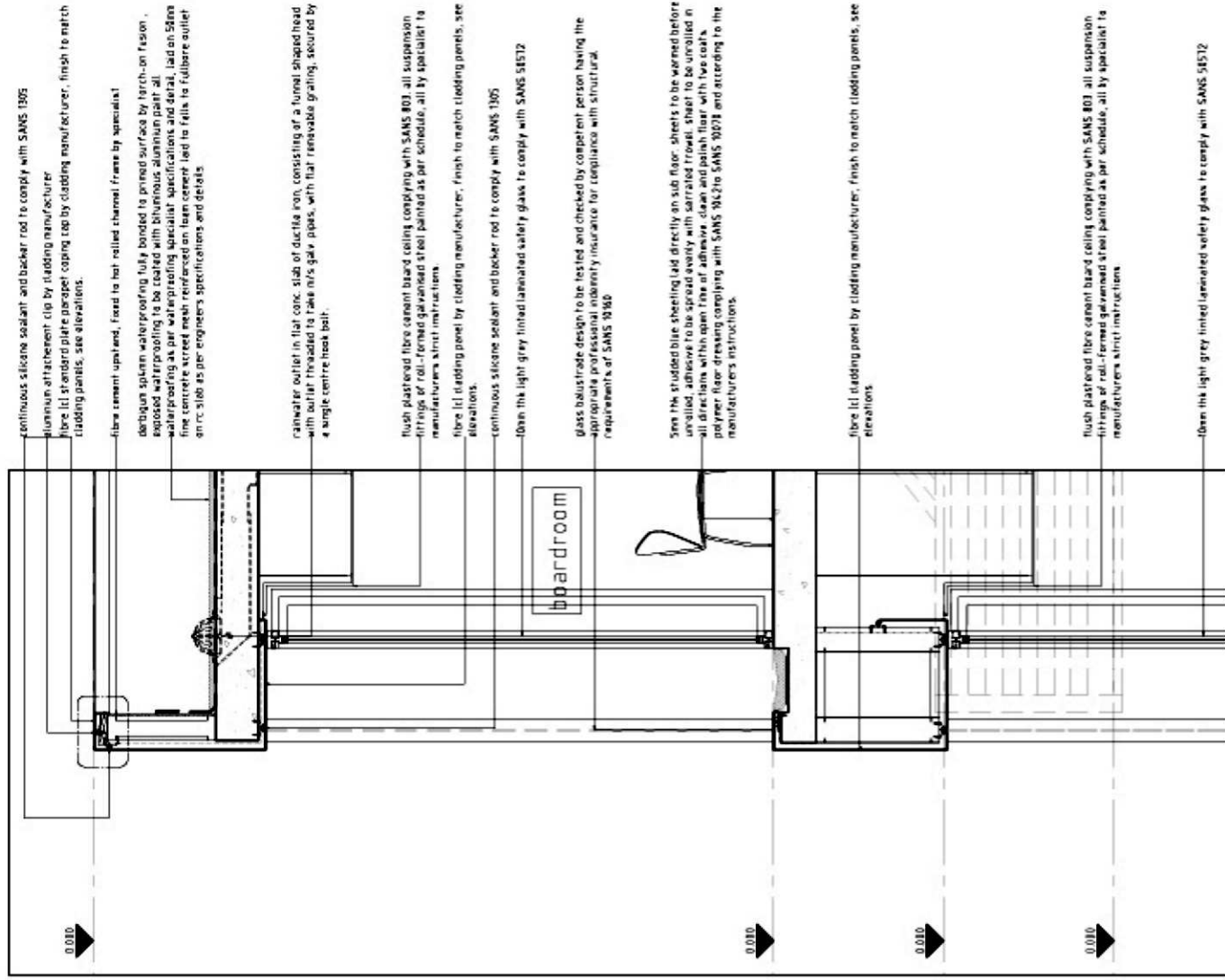
detail [002]
scale 1-20



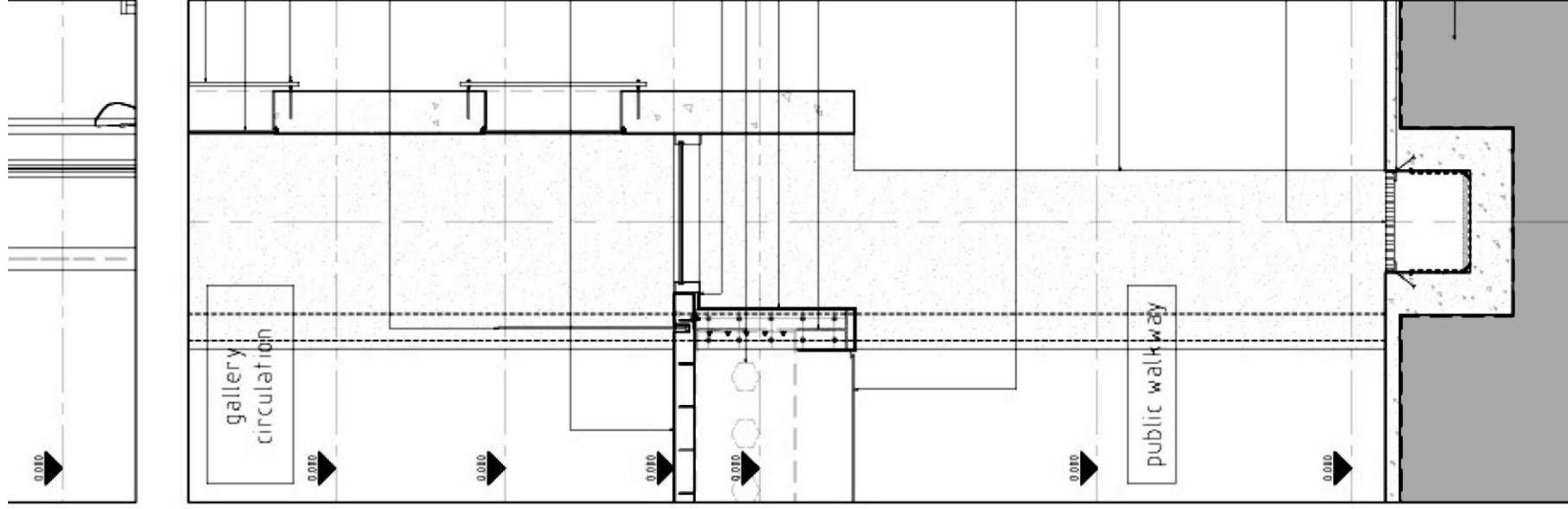


detail [003]
scale 1-20

detail 004
& 005
scale 1-20



detail [004]
scale 1-20



10mm thick coloured (laminated) glass to comply with SANS 56572
 10mm thick clear (laminated) glass to comply with SANS 56572
 10mm ϕ threaded rod chemically anchored into reinforced conc. wall to eng's detail.

glass balustrade design to be tested and checked by competent person having the appropriate professional indemnity insurance for compliance with structural requirements of SANS 10390

5mm thick studded base sheathing laid directly on sub floor. sheets to be warmed before unrolled, adhered to be spread evenly with serrated trowel, sheet to be installed in all directions within open time of adhesive. clean and polish floor with two coats polymer floor dressing complying with SANS 10270 SANS 10271 and according to the manufacturer's instructions.

continuous silicone sealant and backer rod to comply with SANS 1305

60x70mm deep n/s castalled base as per eng's detail

15mm plasterboard bulkhead to be covered with paper backed vinyl to comply with SANS 266 to manufacturer's details

900x230mm deep n/s castalled beam as per eng's detail

supply and fix LUXALIN aluminum ceiling, type 84R, consisting of Panels made of Clear-Clear 0.6mm thick aluminum alloy, 60mm wide x 15mm deep, with rounded edges, colour to client's spec

150x60mm r.c. column to eng's detail

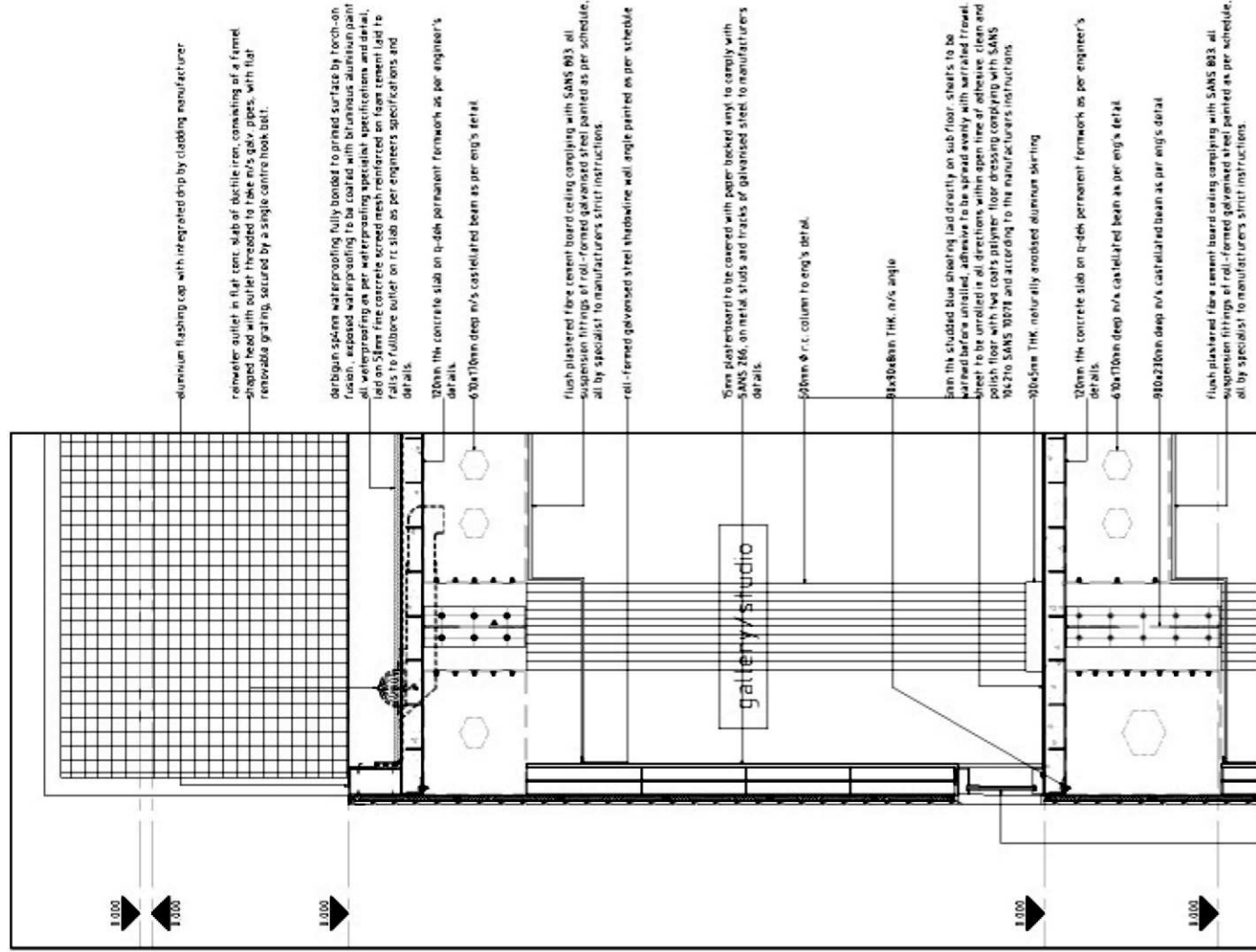
conc. rainwater floor outlet to engineer's detail, 60x60mm, grid removable, grating capable of withstanding heavy vehicle loading, hinges and locks to be welded to grating and fixed to floor outlet.

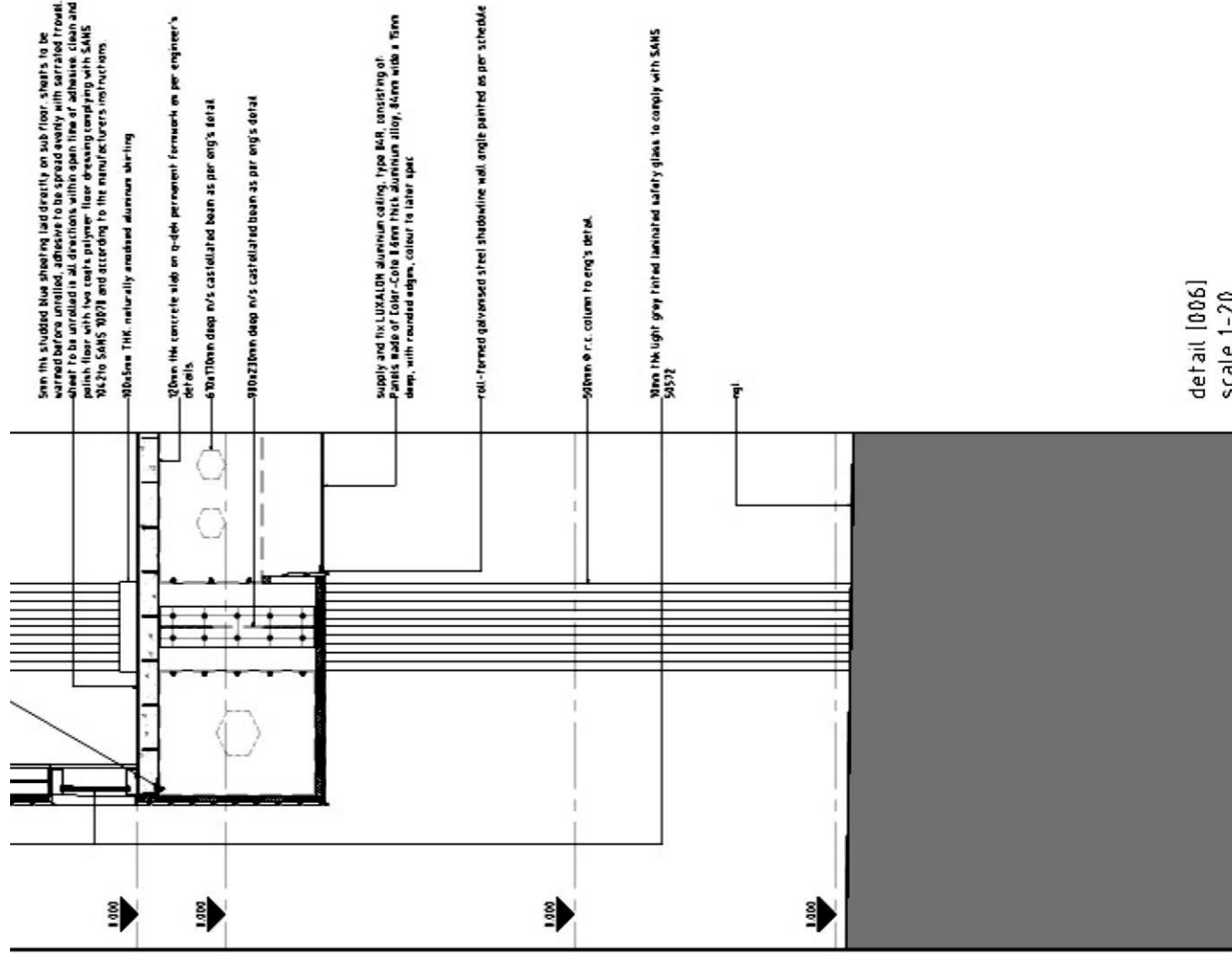
n/s lugs cast in conc. channel to eng's detail

spread, level and compact filling under floors at optimum moisture content in layers not exceeding 100mm to a density of at least 90% MDD. Adhesive to be applied inside of walls and under floors with chlorinated butadiene caulking complying with SANS 1083, applied according to SANS 1084.

detail [005]
scale 1-20

detail 006
scale 1:20





detail [006]
scale 1-20