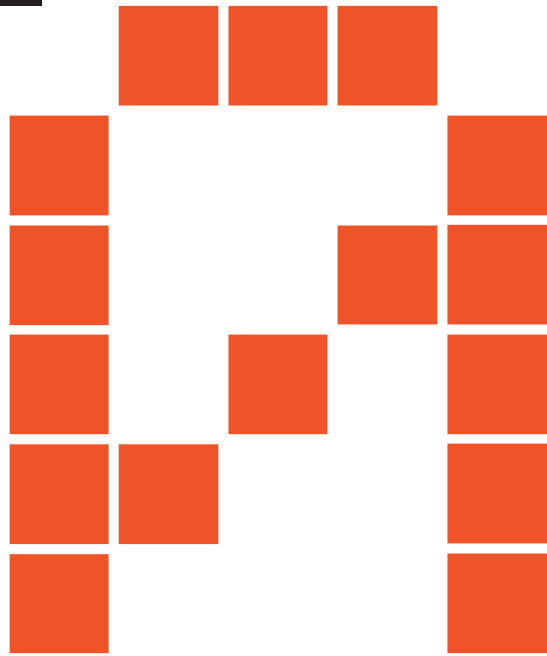




10-01

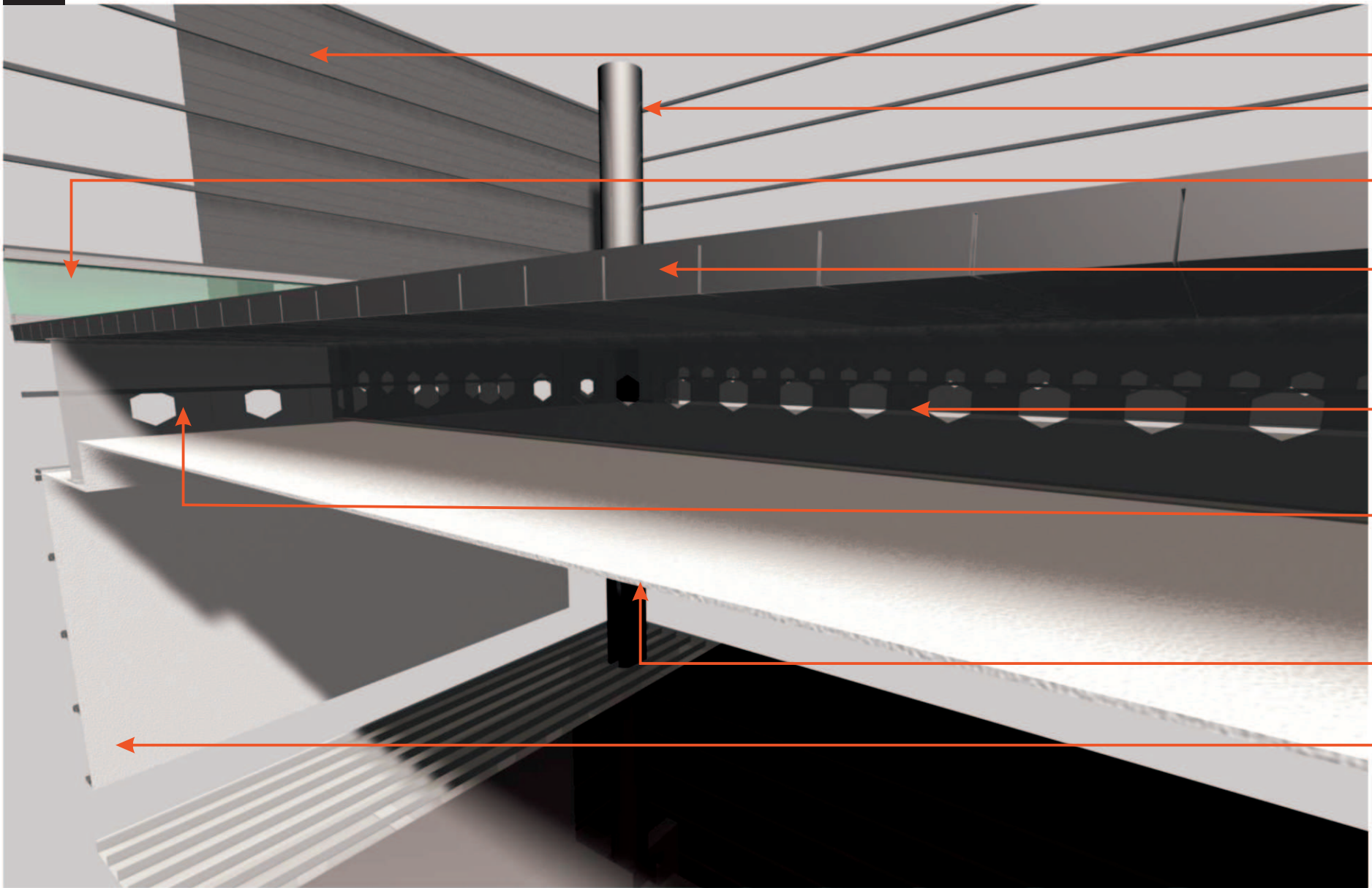


technical





10-03



supply and fix oak rainscreen timber boarding with constant profile ,pre-cut, pre-drilled and counter bored - complete with all stainless steel fixings by manufacturer. 2 piece flush external corner details
500mm %%c r.c. column to eng's detail.

10mm thk light grey tinted laminated safety glass to comply with SANS 50572

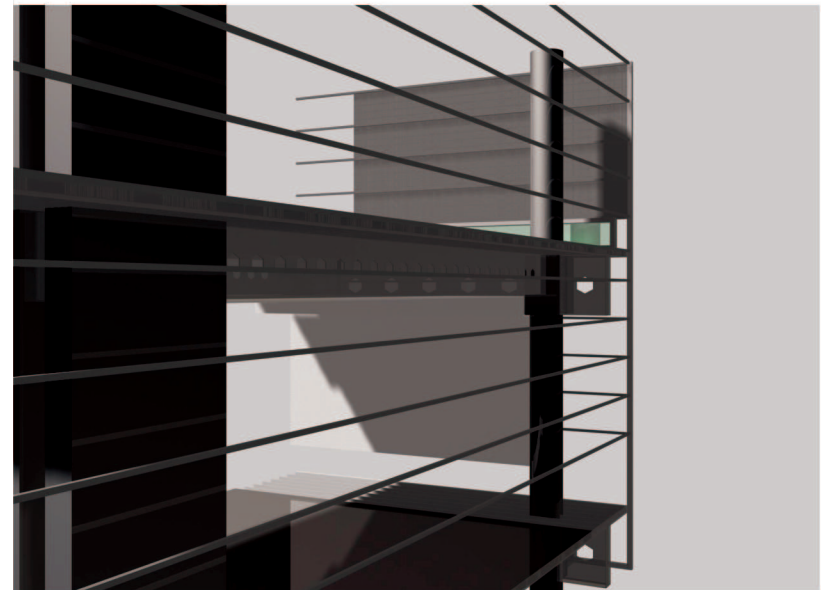
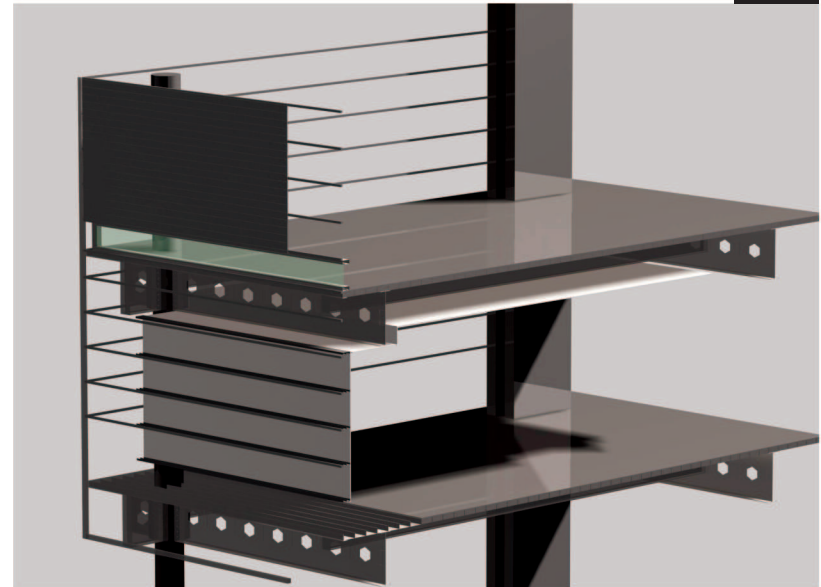
5mm thk studded blue sheeting laid directly on sub floor. sheets to be warmed before unrolled, adhesive to be spread evenly with serrated trowel. sheet to be unrolled in all directions within open time of adhesive. clean and polish floor with two coats polymer floor dressing complying with SANS 1042 to SANS 10070 and according to the manufacturers instructions.

610x170mm deep m/s castellated beam as per eng's detail

900x230mm deep m/s castellated beam as per eng's detail

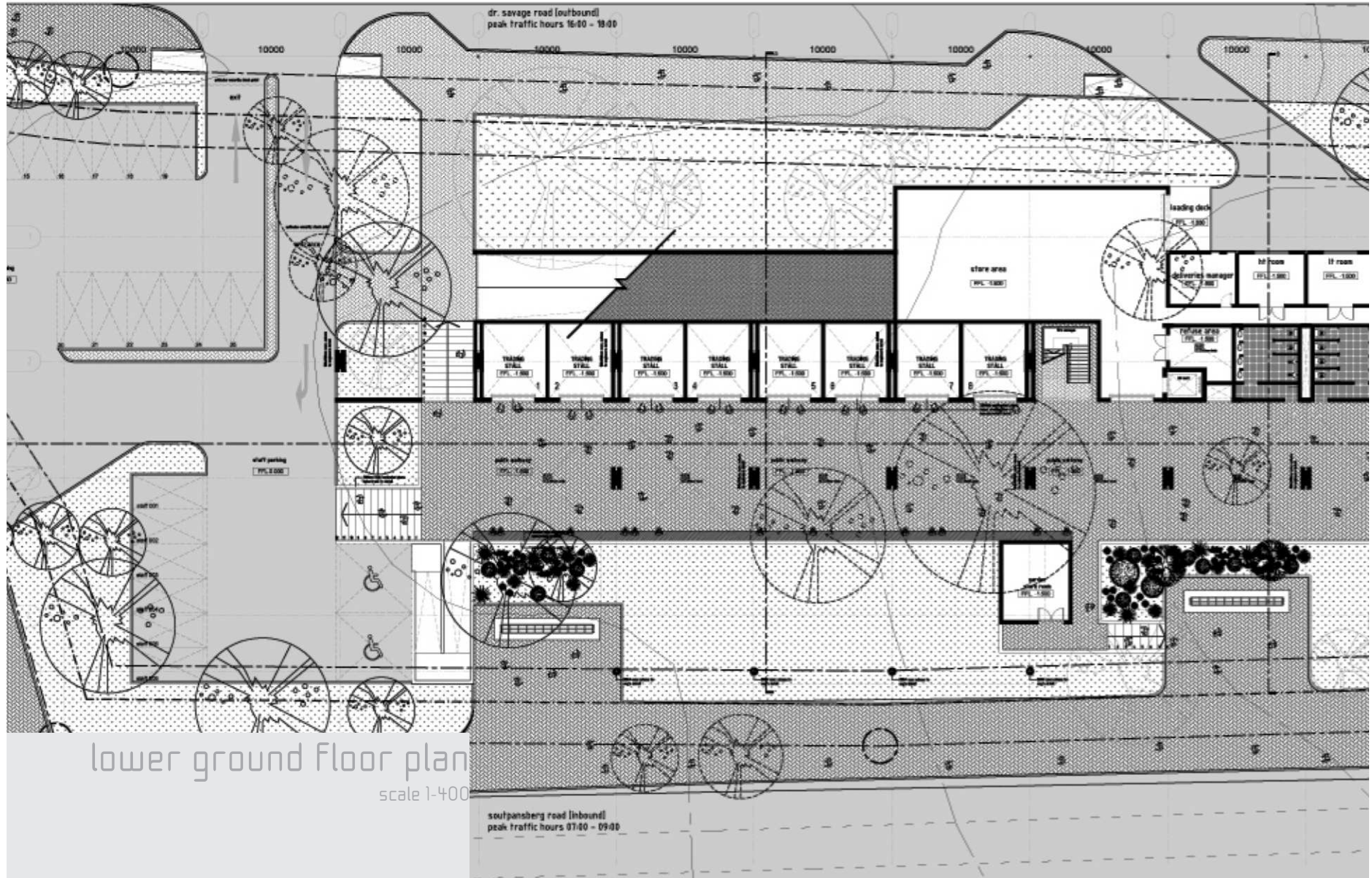
Flush plastered fibre cement board ceiling complying with SANS 803. all suspension fittings of roll-formed galvanised steel painted as per schedule, all by specialist to manufacturers strict instructions.

15mm plasterboard to be covered with paper backed vinyl to comply with SANS 266, on metal studs and tracks of galvanised steel to manufacturers details.

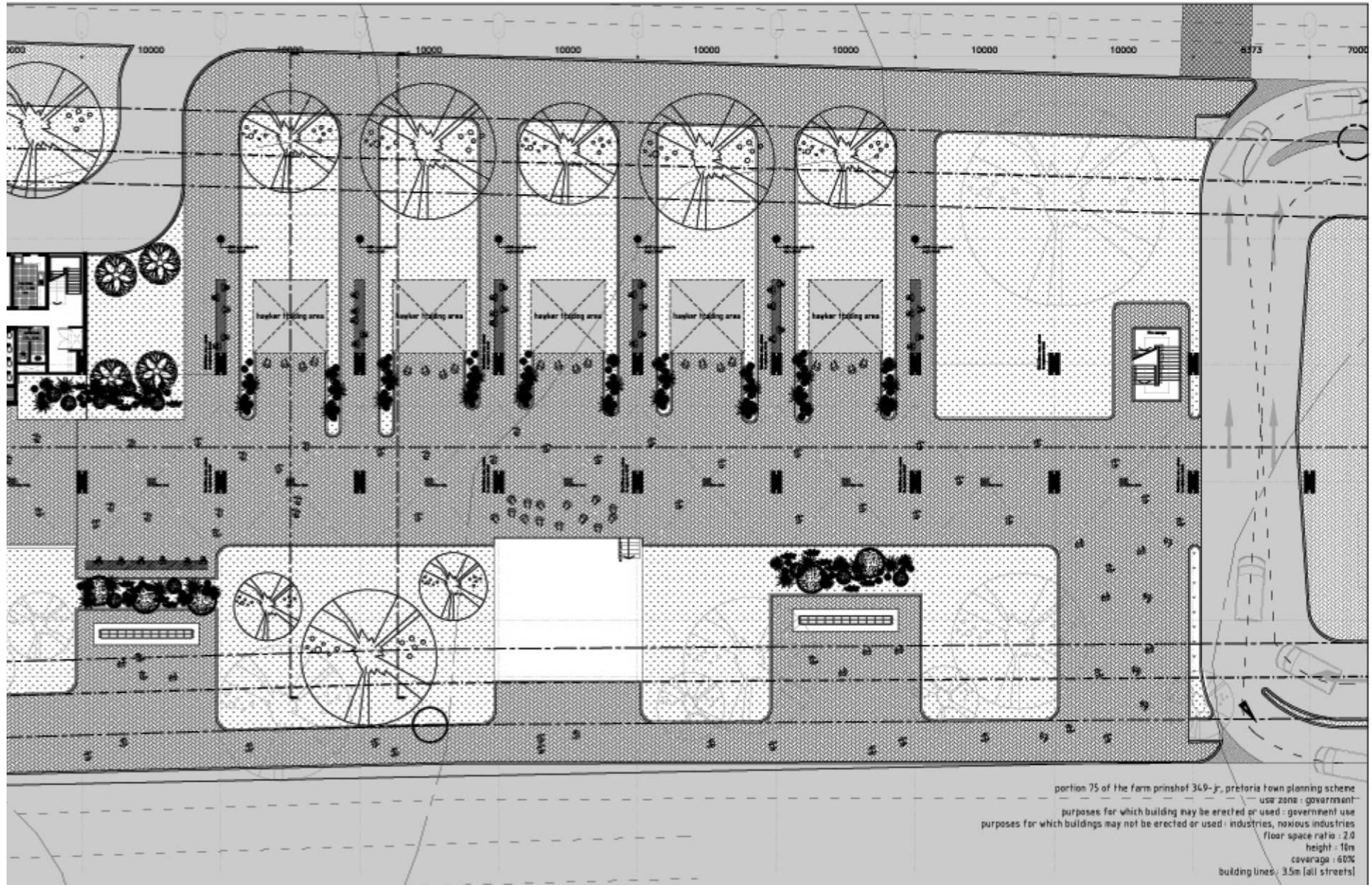




10-05

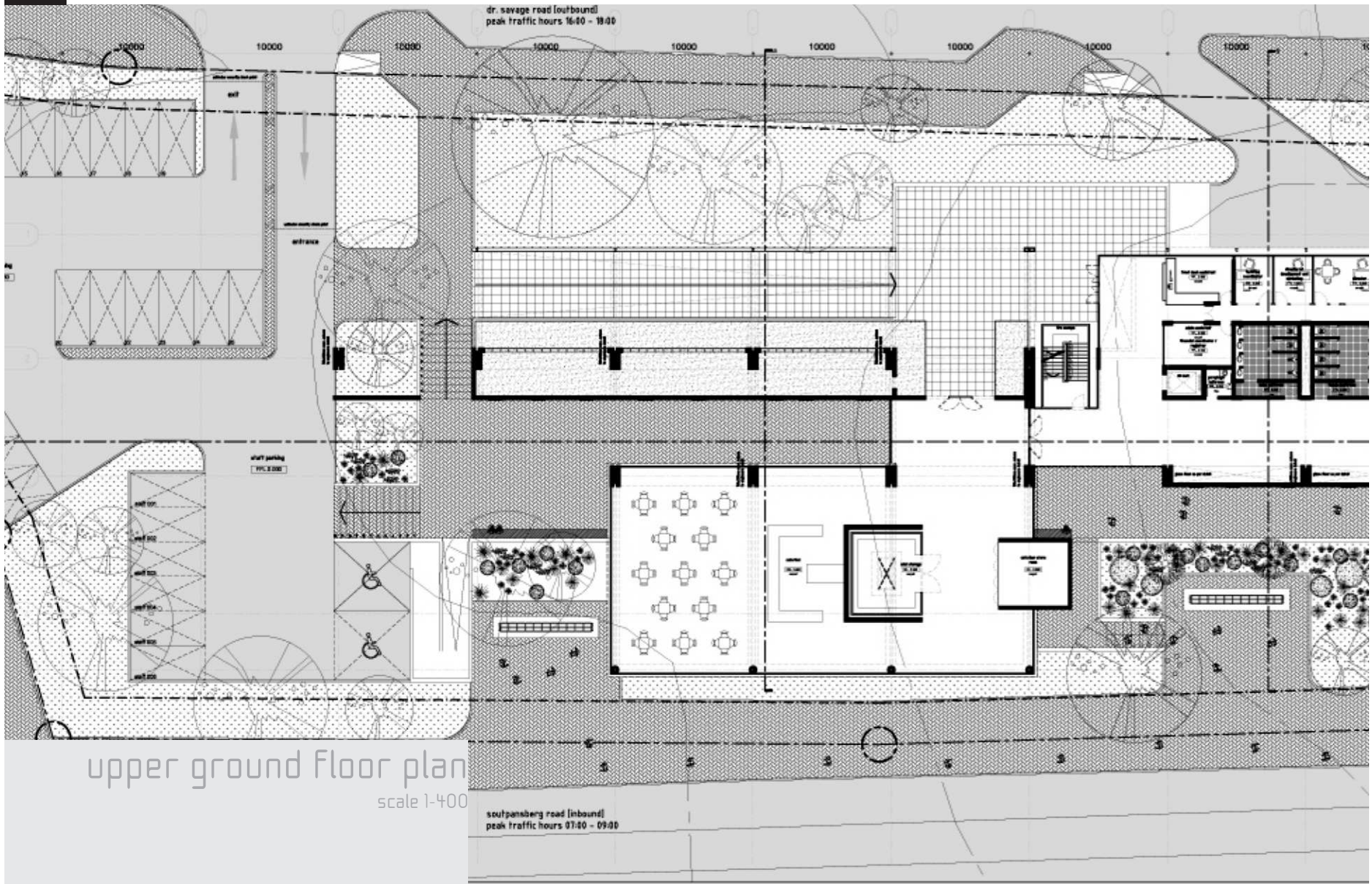


lower ground floor plan
scale 1:400

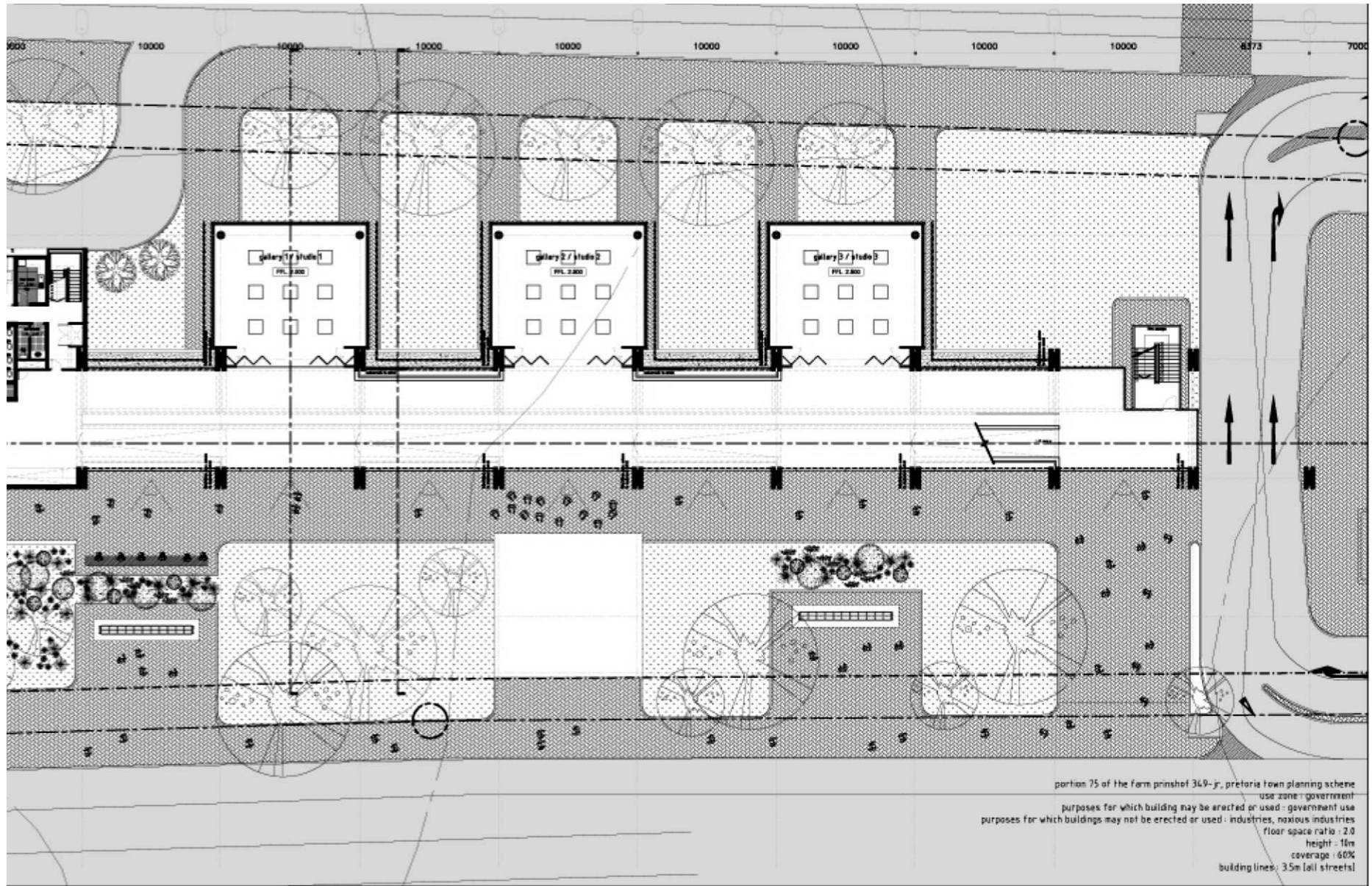




10-07

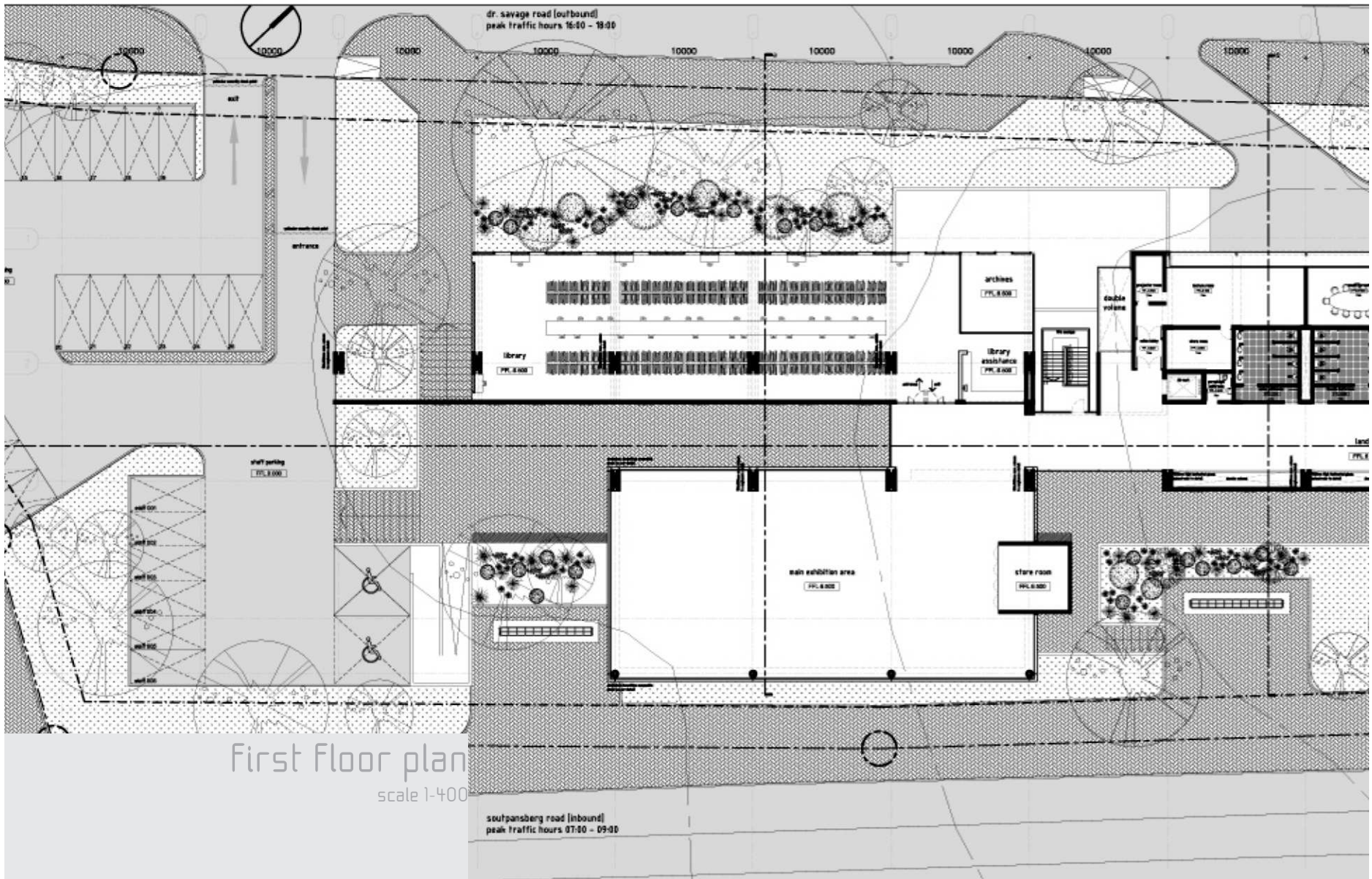


upper ground floor plan
scale 1:400

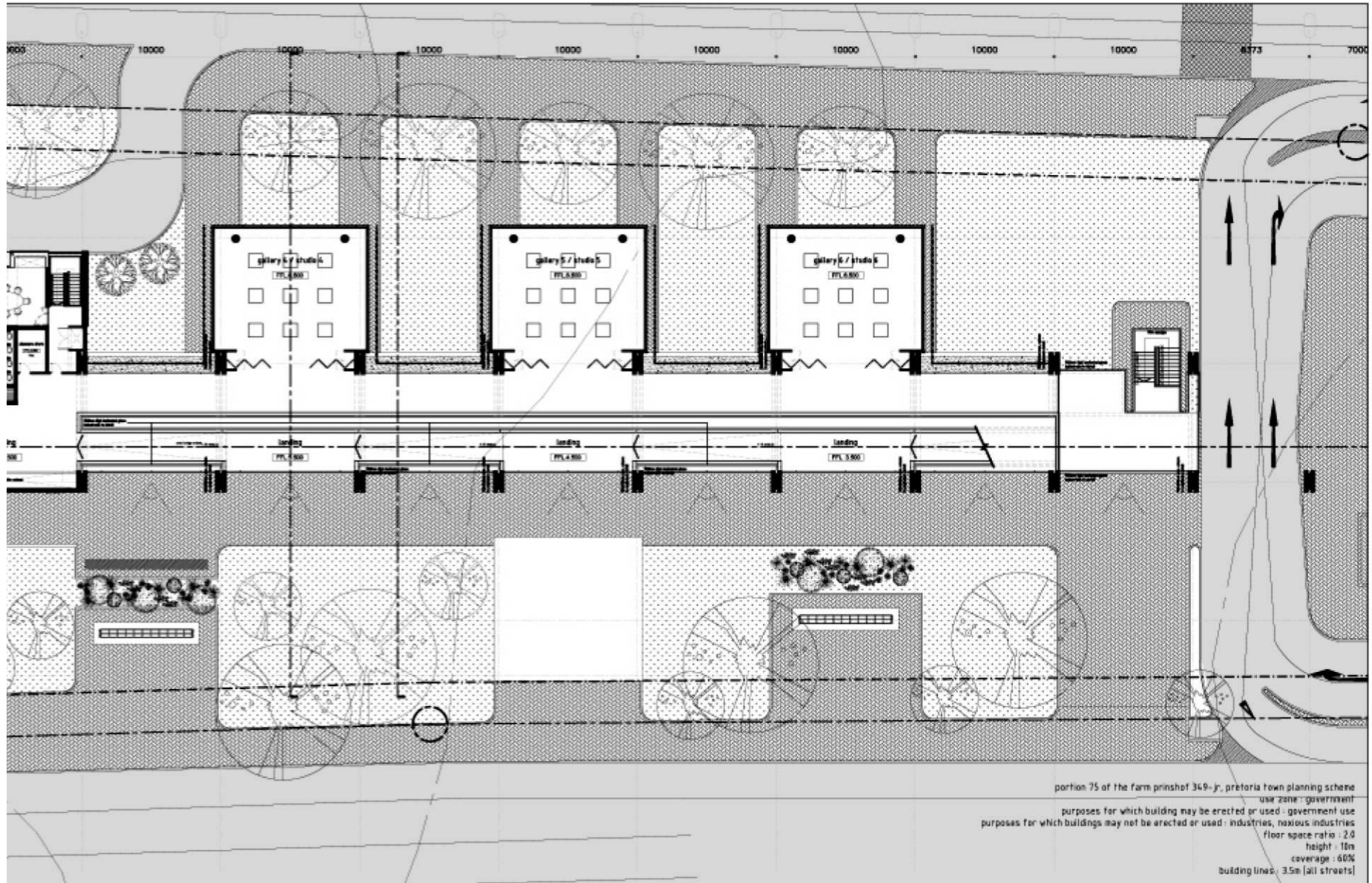




10-09



First floor plan
scale 1:400





10-11

