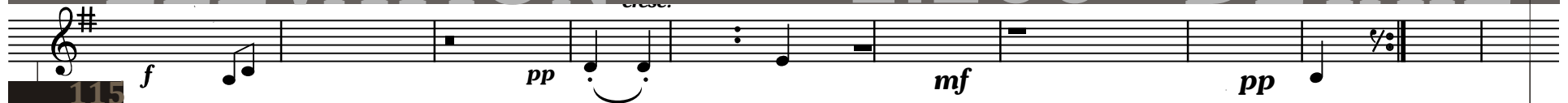


“Music, in performance, is a type of sculpture. The air in the performance is sculpted into something”.

## Frank Zappa

ELEVATION 1:200 DETAIL



ALL PANELS GLAD IN  
 PERFORATED PLYWOOD & ROCKWOOL  
 WITHIN THE CAVITY  
 OFF-SHUTTER CONCRETE WALL  
 WITH HORIZONTAL CASTING PATTERNS

PLANTED CONCRETE ROOF

# TECHNICAL DOCUMENTATION

SAFETY GLASS

340 RC SLAB ACC. TO ENG. SPEC

PRACTICE ROOM

WALKWAY

BALCONY

PROPOSED CELTIS AFRICANA TREE

TRADE

SAFETY GLASS

255 RC SLAB ACC. TO ENG. SPEC

PRACTICE ROOM

495

ARTIST COURTYARD

ARCADÉ

BUILT-IN SEATING

20 MPa CONCRETE FOUNDATION ACC. TO ENG. SPEC

COMPACTED GROUND FILL IN LAYERS OF 150mm

TOP OF SURFACE BEDS TO BE AT LEAST 150mm ABOVE EXTERNAL GROUND LEVEL

# SECTION



site plan  
scale 1:500

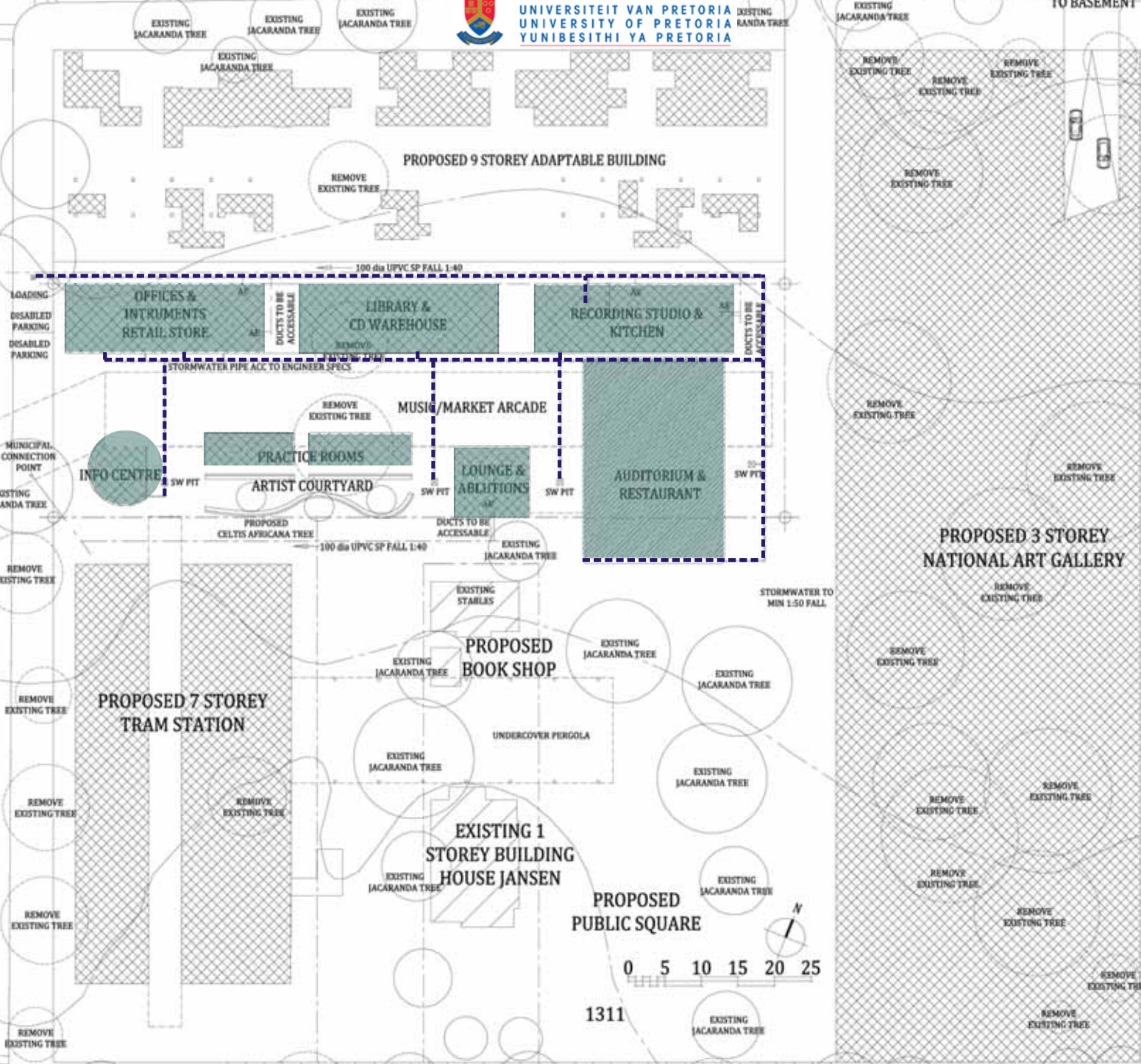
# BLOED STREET (1 WAY)



UNIVERSITEIT VAN PRETORIA  
UNIVERSITY OF PRETORIA  
YUNIBESITHI YA PRETORIA

PAUL KRUGER STREET (2WAY SEMI-PEDESTRIANISED)

PROPOSED ACCESS  
TO BASEMENT



PROPOSED 9 STOREY ADAPTABLE BUILDING

OFFICES & INSTRUMENTS RETAIL STORE  
LIBRARY & CD WAREHOUSE  
RECORDING STUDIO & KITCHEN

MUSIC/MARKET ARCADE

PRACTICE ROOMS

LOUNGE & ABLUTIONS

AUDITORIUM & RESTAURANT

INFO CENTRE

ARTIST COURTYARD

PROPOSED BOOK SHOP

PROPOSED 7 STOREY TRAM STATION

PROPOSED 3 STOREY NATIONAL ART GALLERY

EXISTING 1 STOREY BUILDING HOUSE JANSEN

PROPOSED PUBLIC SQUARE

0 5 10 15 20 25



1311

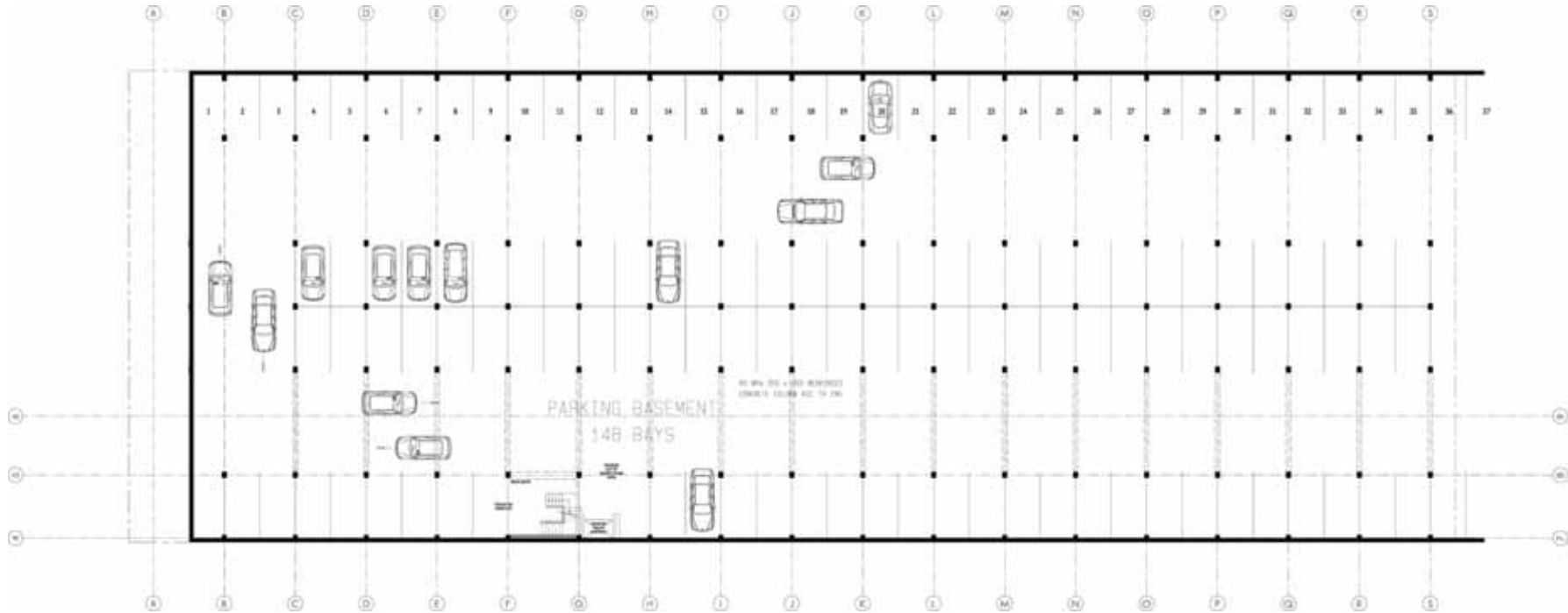
1308

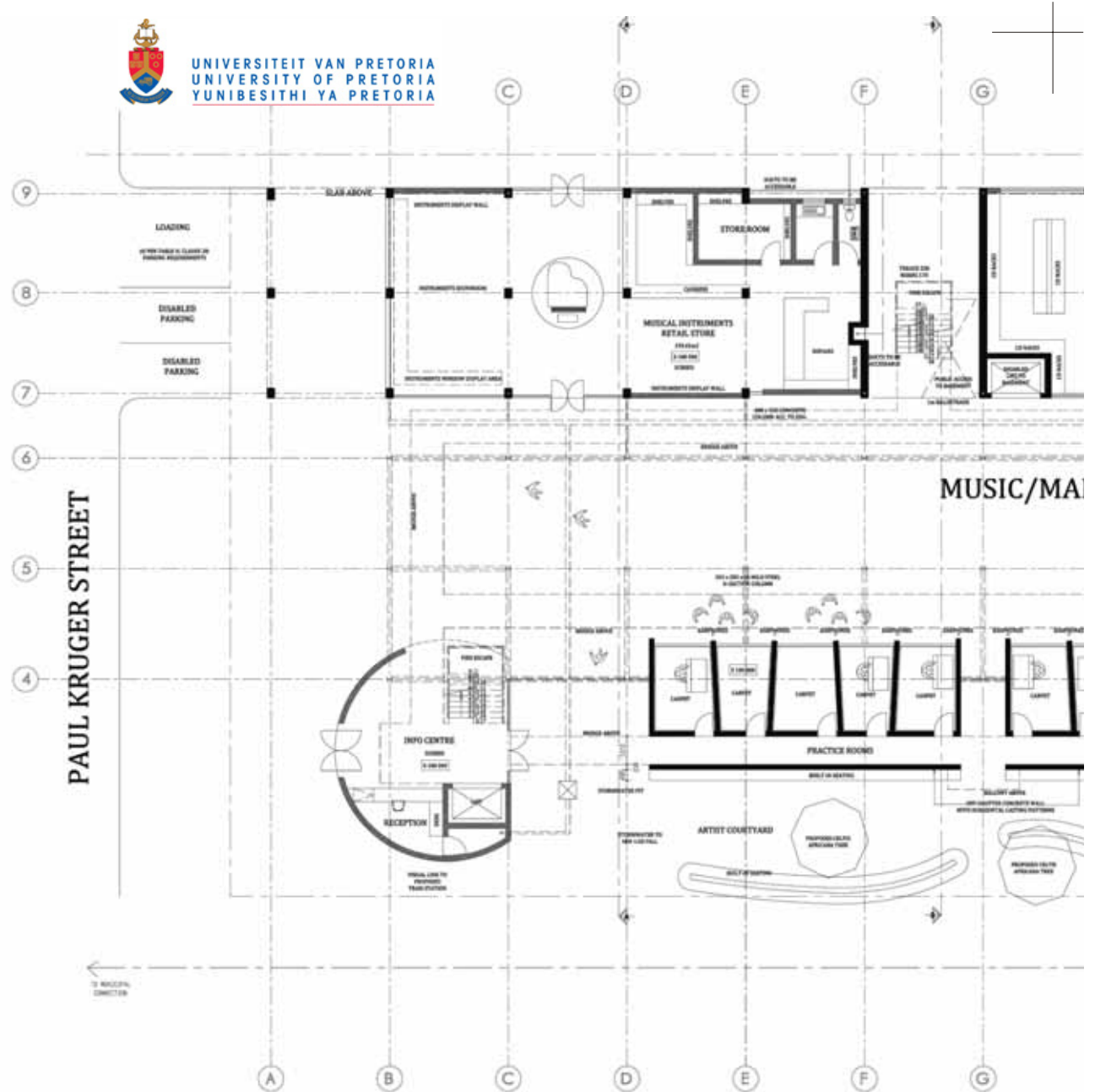
1309

1310

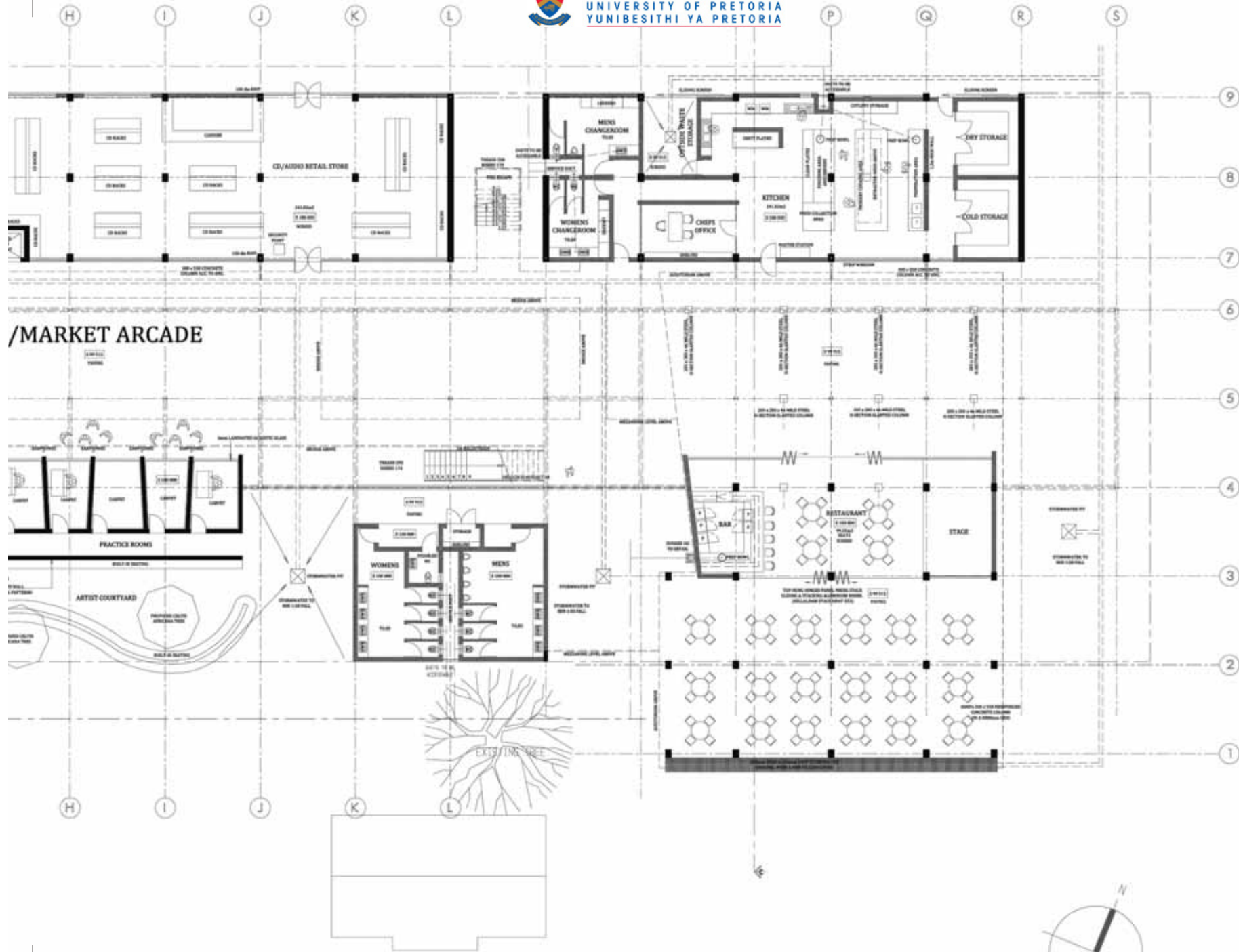
EXISTING JACARANDA TREE REMOVE EXISTING TREE EXISTING PALM TREE EXISTING PALM TREE EXISTING PALM TREE EXISTING PALM TREE EXISTING JACARANDA TREE REMOVE EXISTING TREE

basement plan  
scale 1:200

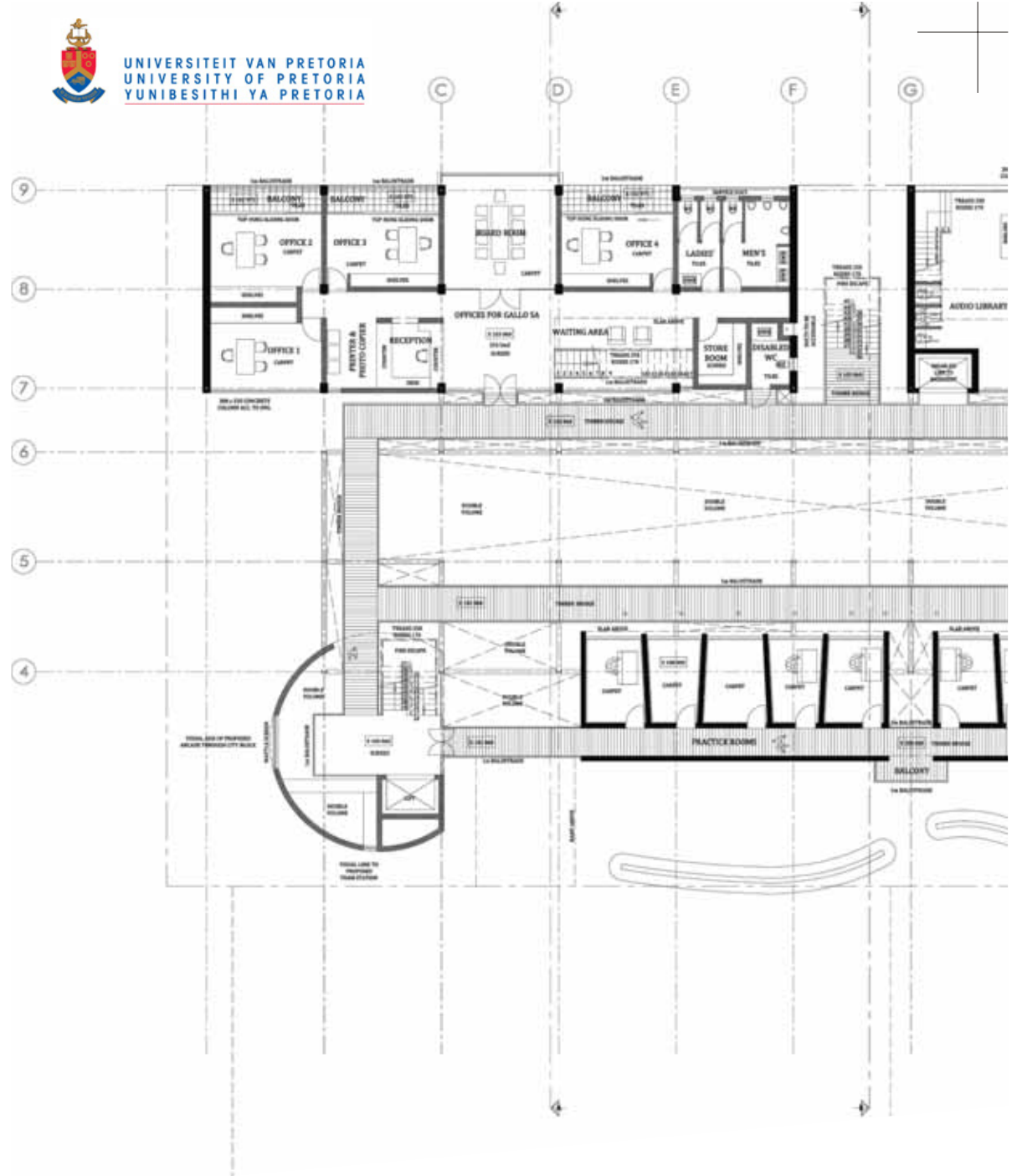




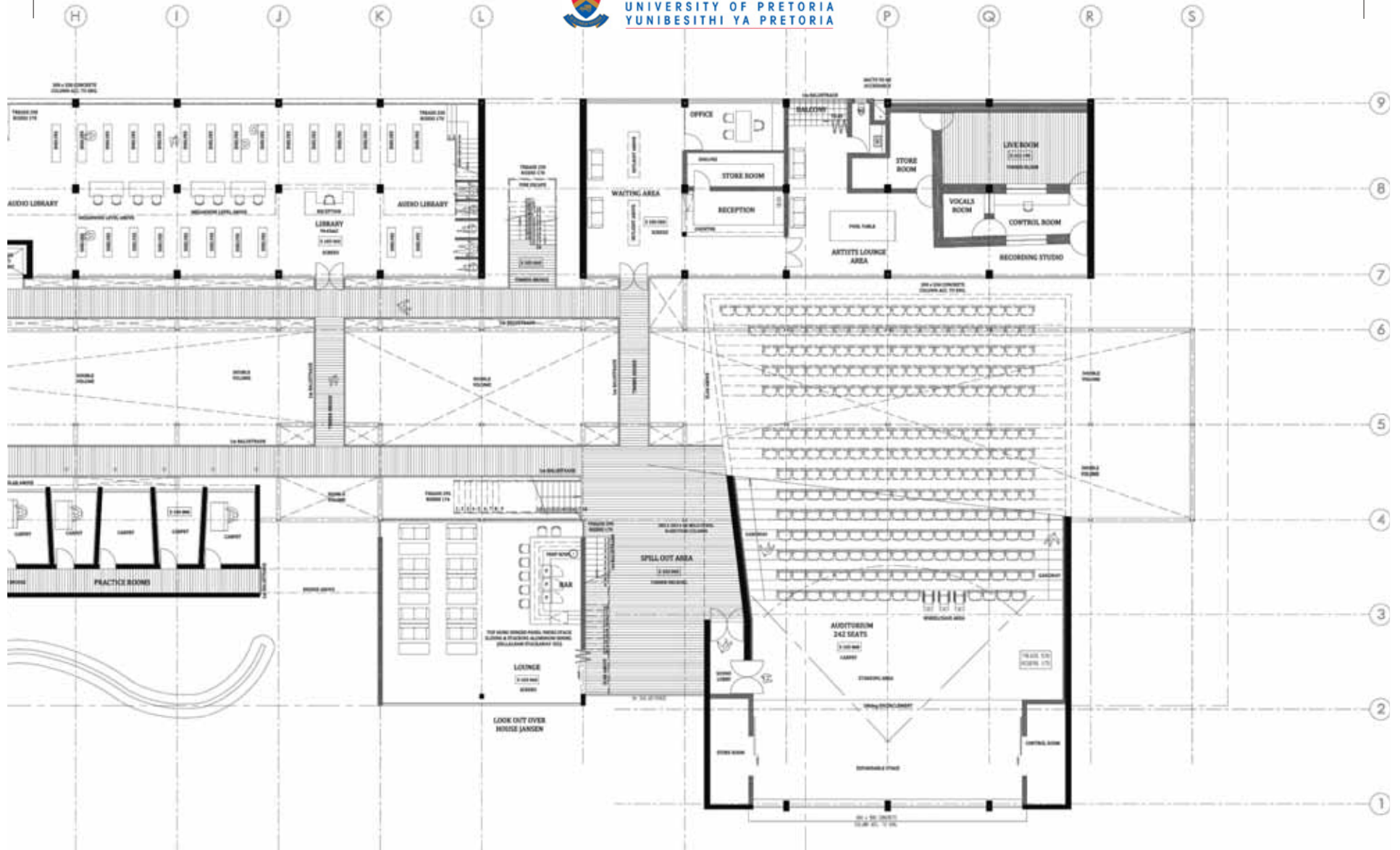
ground floor plan  
scale 1:250

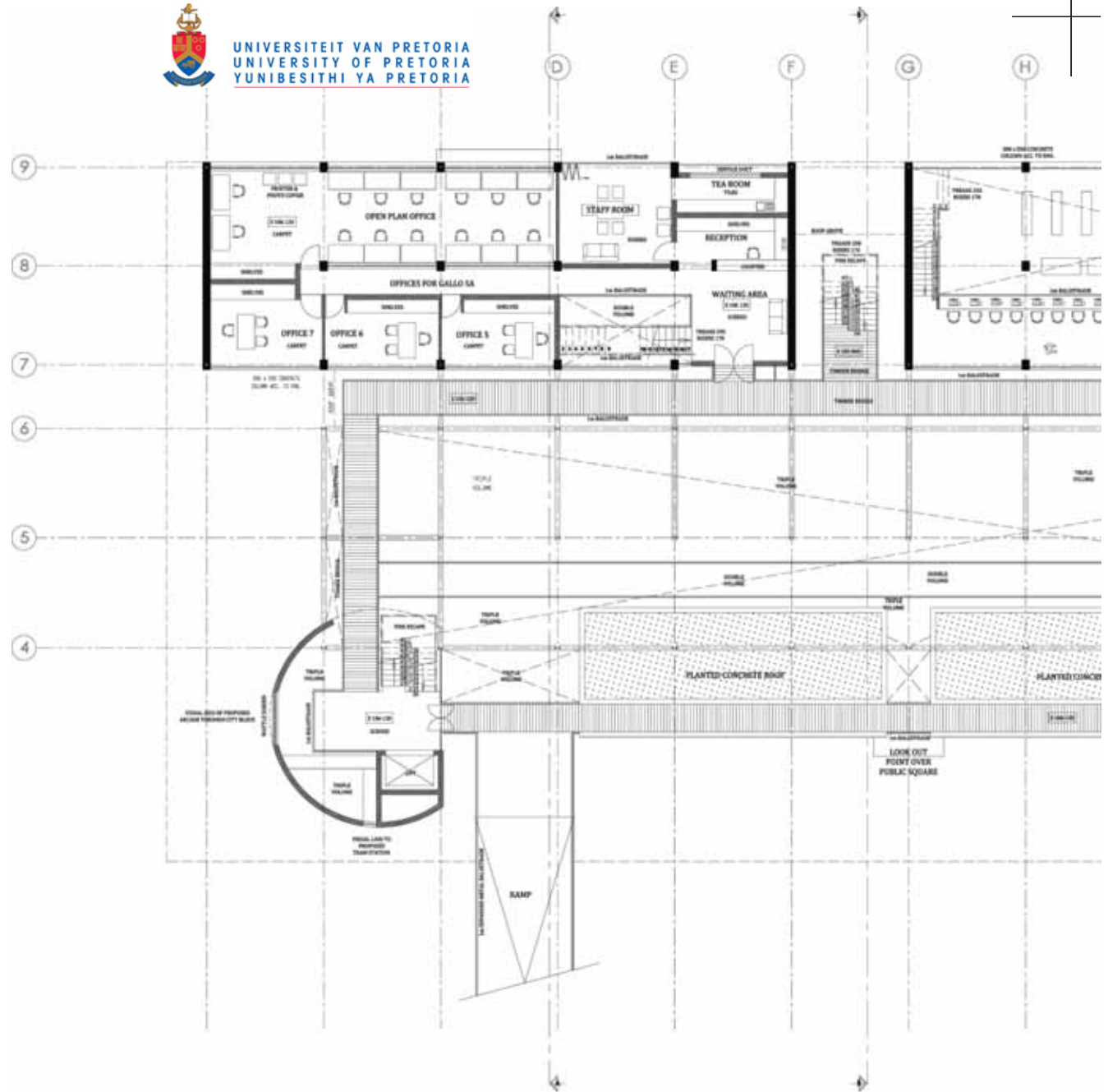




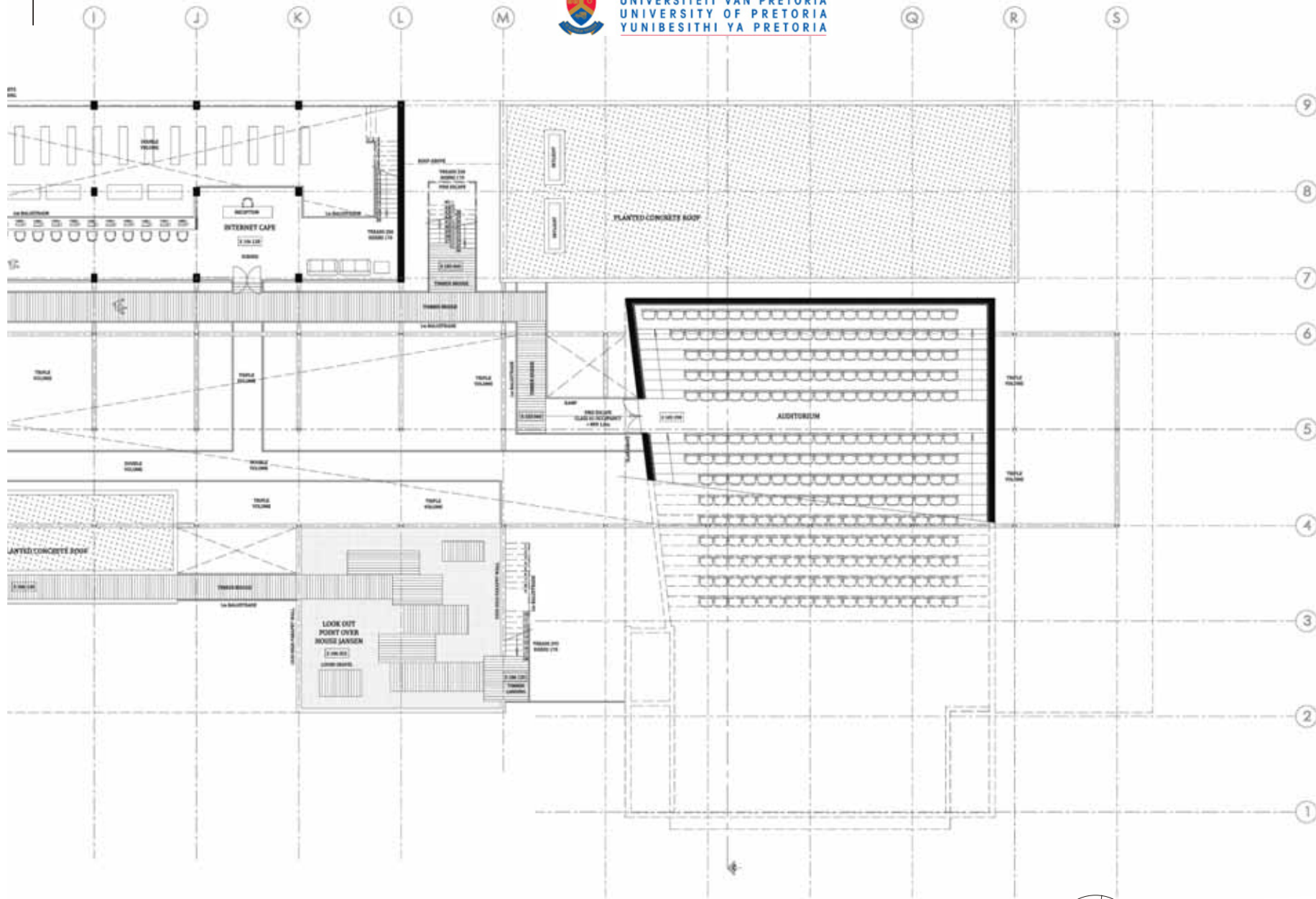


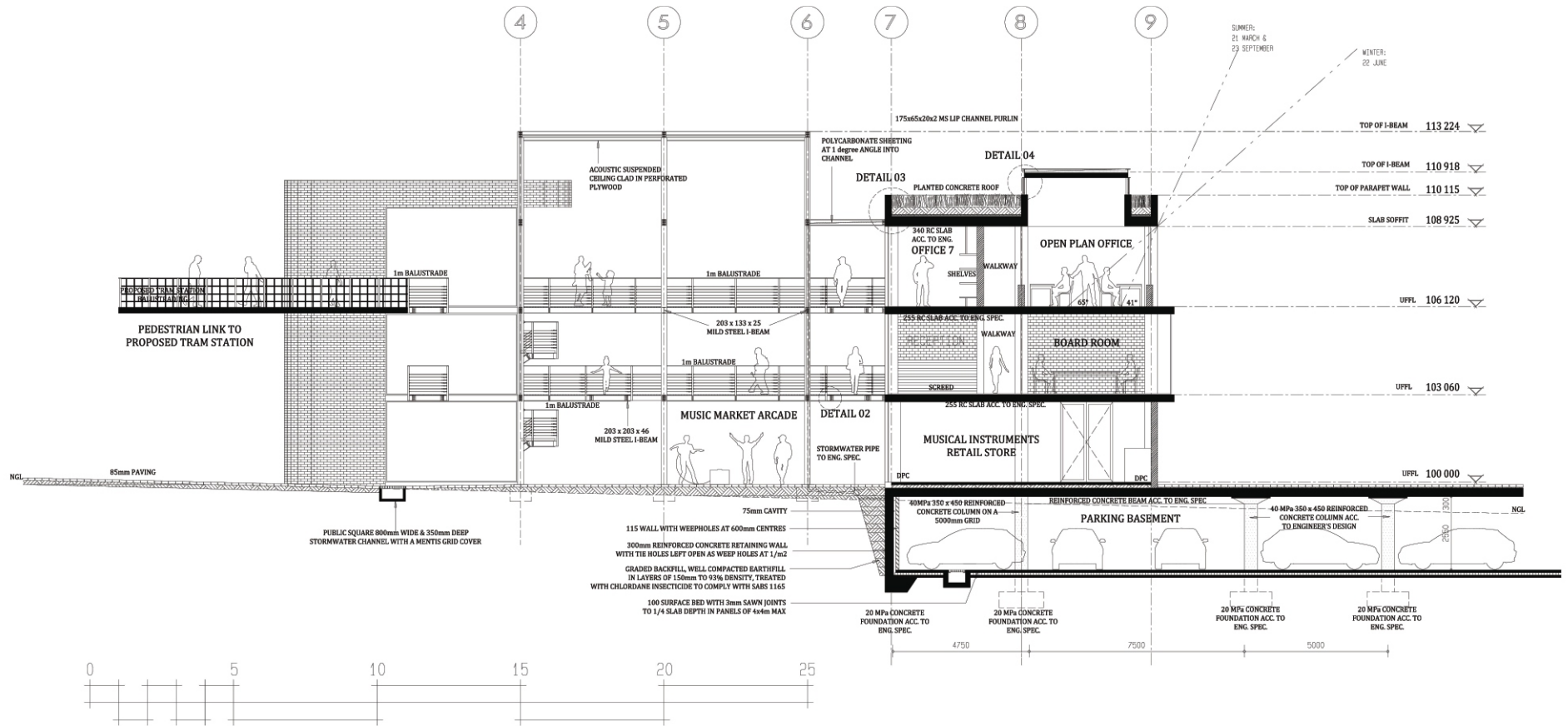
first floor plan  
scale 1:250



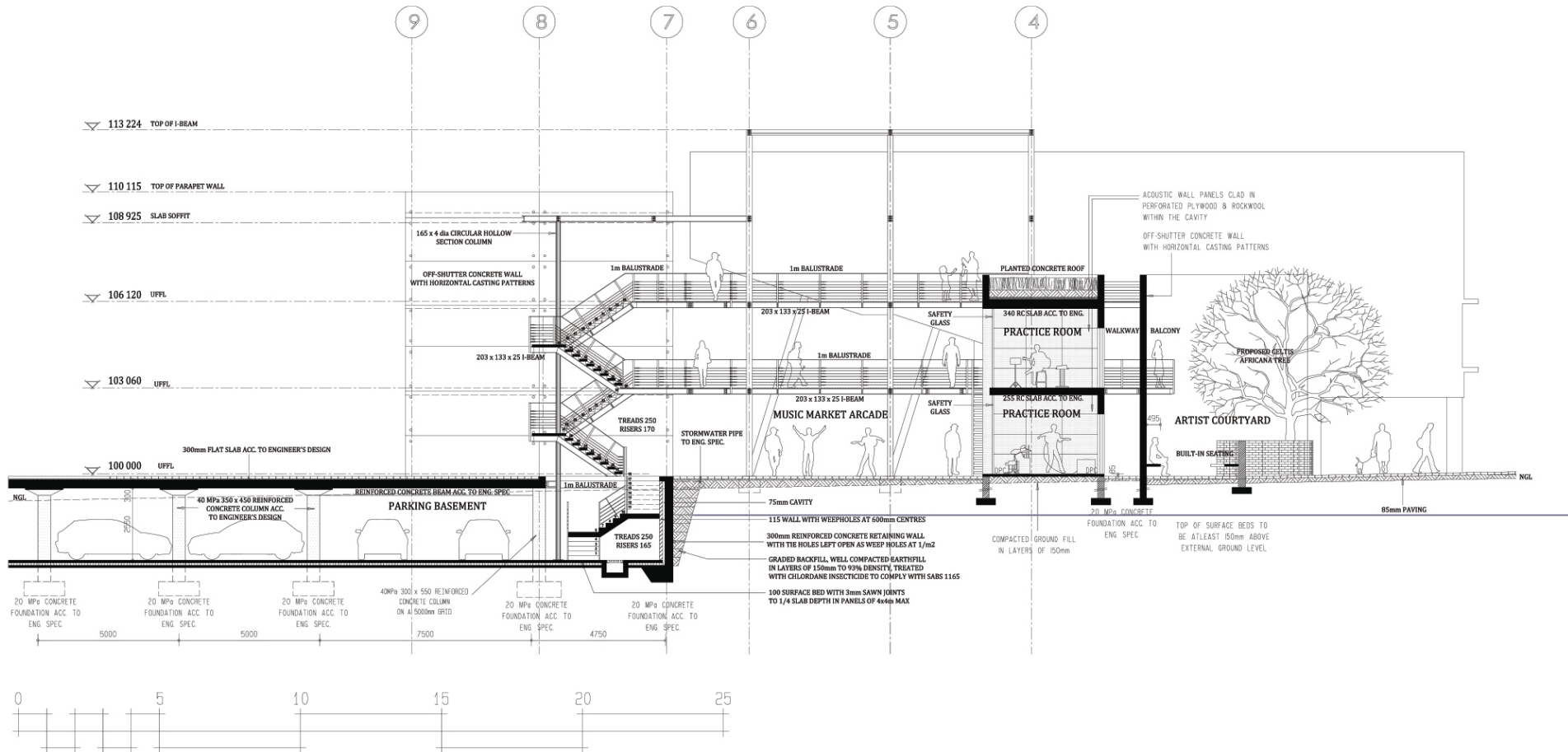


second floor plan  
scale 1:250

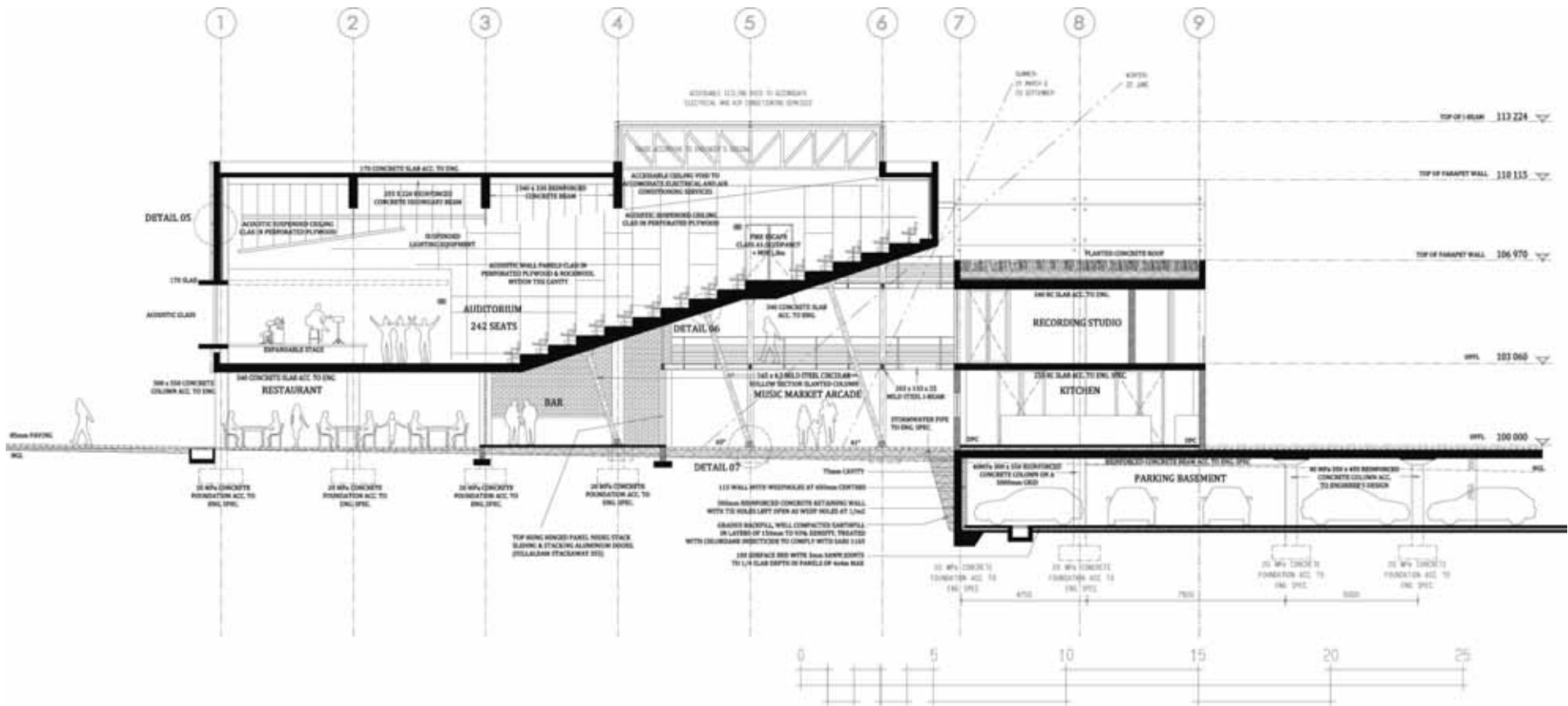




section aa  
scale 1:200



section bb  
scale 1:200



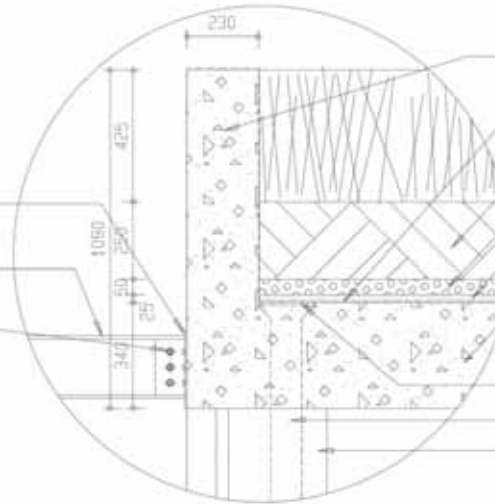
section cc  
scale 1:200



6mm MS CONNECTION PLATE  
WELDED TO H-BEAM

203 x 133 x 25 I-BEAM

BOLTS ACC.  
TO ENG. SPEC.



230 PARAPET WALL

ABE INDEX FIDIA MULTI LAYER BITUMINIOUS  
TORCH-ON WATERPROOFING AS PER MAN SPEC.

250mm TOPSOIL

50mm LAYER

25mm CEMENT SCREED

340 REINFORCED CONCRETE SLAB  
ACC. TO ENGINEER'S DETAIL

100 dia RAIN WATER PIPE

100 dia RAIN WATER PIPE

40 MPa 350 x 450 CONCRETE  
COLUMN ACC. TO ENGINEER'S DETAIL

## DETAIL 3

scale 1:50

50 X 10mm MS FLATBAR HORIZONTAL  
WELDED TO 48 x 2mm CIRCULAR HOLLOW SECTION

48 x 2mm UPRIGHT CIRCULAR HOLLOW  
SECTION AT 900mm SPACINGS WELDED  
TO 6mm MS CONNECTION PLATE

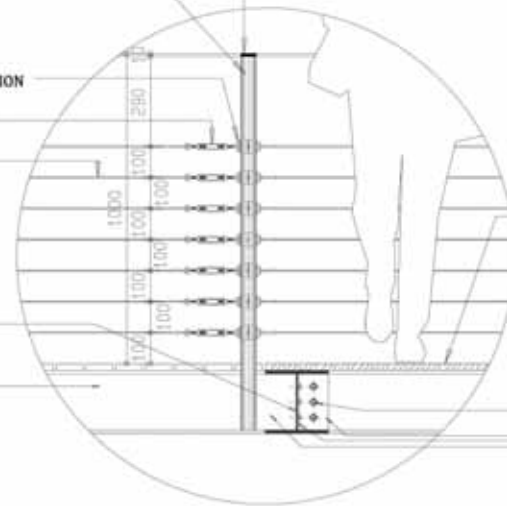
MILD STEEL EYE PLATE TO MANUFACTURERS SPEC.  
WELDED TO 48 dia UPRIGHT CIRCULAR HOLLOW SECTION

TURNBUCKLE TO MANUFACTURERS SPEC.

4mm dia GALVANISED MILD STEEL SPIRAL STRAND  
TENSION CABLE AT 100mm HORIZONTAL SPACINGS

203 x 203 x 46 STEEL H-SECTION  
BOLTED ON BOTH SIDES OF  
6mm MS CONNECTION PLATE

203 x 133 x 25 MILD STEEL I-BEAM



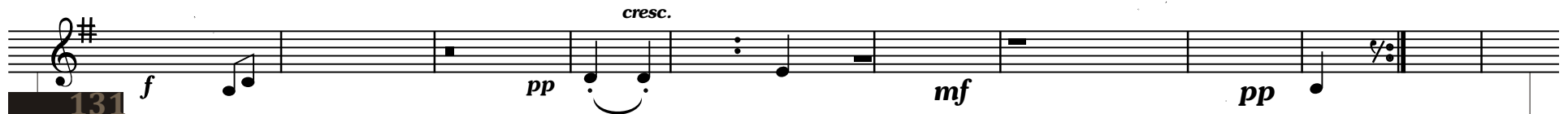
86 x 22mm SQUARE EDGE MERANTI  
TIMBER HARDWOOD FLOOR BOARDS  
WITH 9mm SPACINGS TREATED WITH CCA  
& FIXED TO 203 x 133 x 25 I-BEAM WITH  
HOT-DIPPED GALVANISED FASTENERS  
KX16: FIRE PERFORMANCE:  
TT7 WOOD CONSTRUCTION ACC. TO SABS 082  
HAZARD CLASS 3

BOLTS ACC. TO ENG. SPEC.

6mm MS CONNECTION PLATE  
WELDED TO H-BEAM

## DETAIL 2

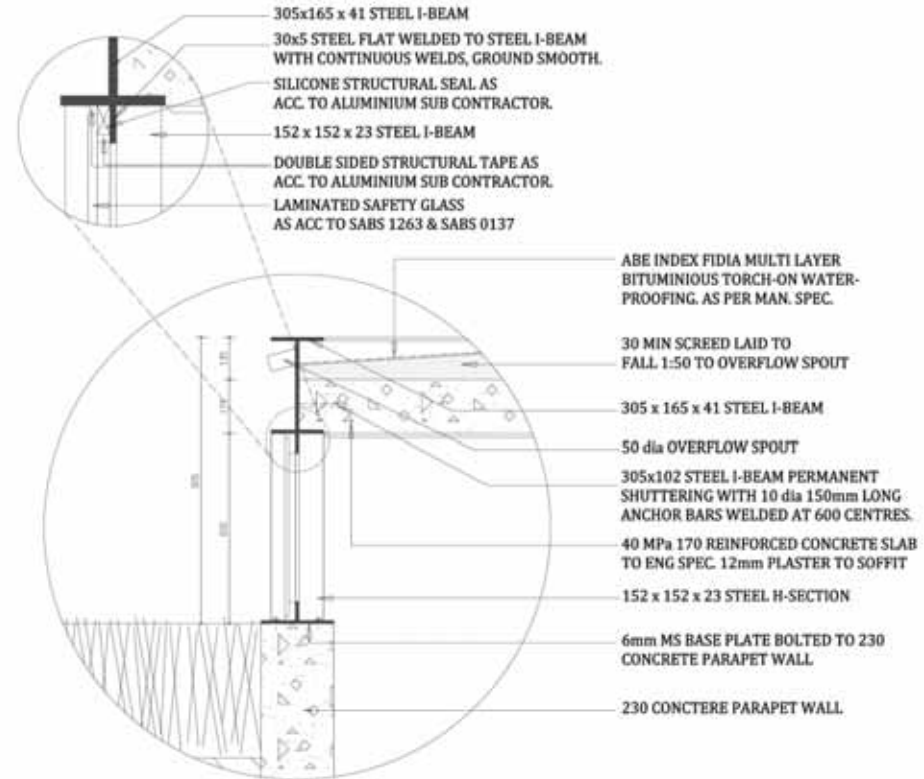
scale 1:50





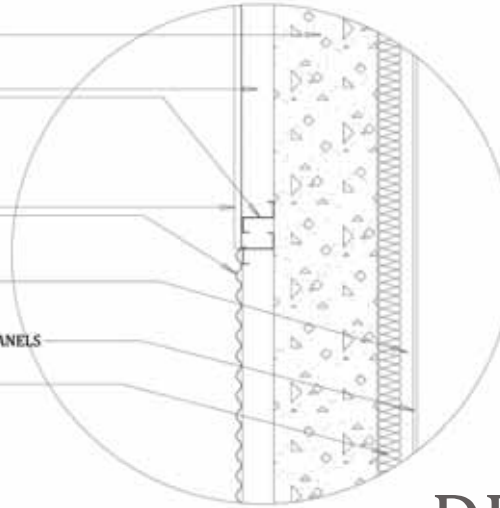


scale 1:50  
DETAIL 4





- 330mm REINFORCED CONCRETE WALL
- 100 x 50 x 20 x 2,0 COLD-FORMED LIPPED ZED BOLTED TO 330mm REINFORCED CONCRETE WALL
- 0,6mm 5-PROFILE MILD STEEL SHEETS OVERLAPPING CLADDING FIXED TO 100 x 50 x 20 x 2,0 COLD-FORMED LIPPED LED WITH HOT-DIPPED GALVANISED FASTENERS
- 76 x 114 SA PINE GRADE 5 TIMBER STUDS AT 600mm CENTRES
- 13mm PERFORATED PLYWOOD ACOUSTIC WALL PANELS
- 75mm ISOLATION BLANKET

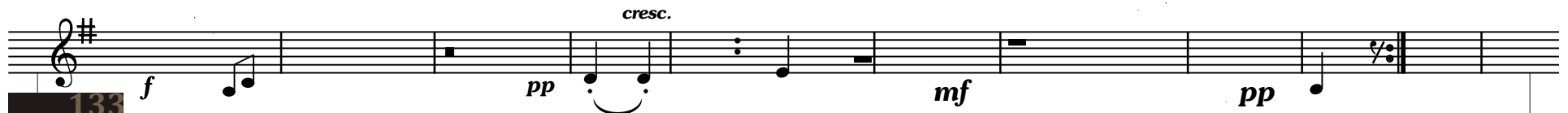


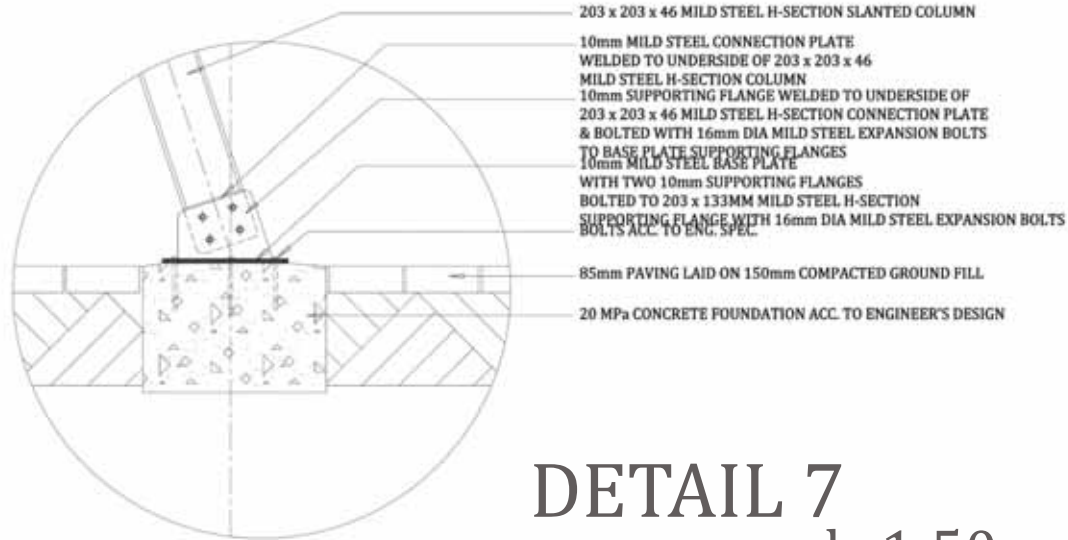
DETAIL 5  
scale 1:50



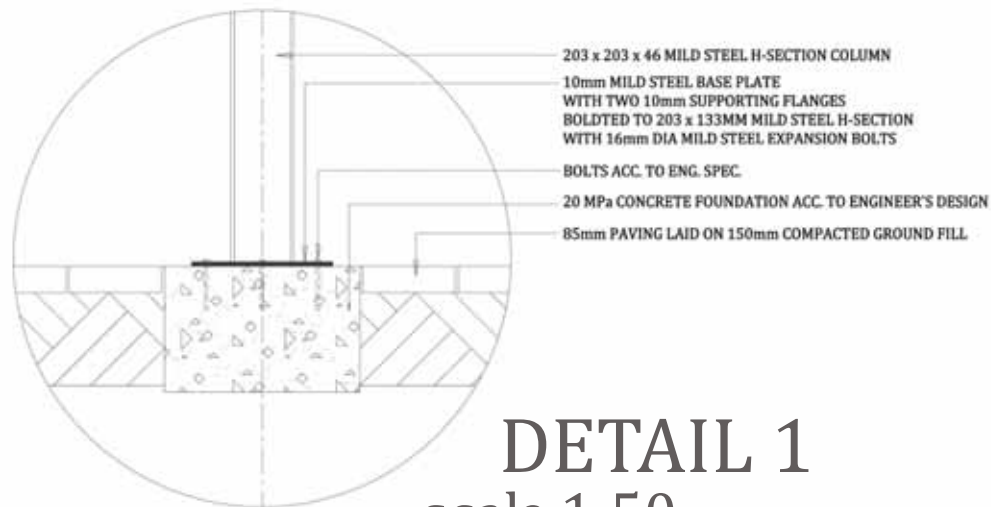
- 340 REINFORCED CONCRETE SLAB ACC. TO ENGINEER'S DETAIL
- 10mm MILD STEEL BASE PLATE WITH FOUR 10mm SUPPORTING FLANGES BOLTED TO 340 REINFORCED CONCRETE SLAB
- BOLTS ACC. TO ENG. SPEC.
- 10mm SUPPORTING FLANGE WELDED TO 10mm MILD STEEL BASE PLATE & 203 x 203 x 46 MILD STEEL H-SECTION SLANTING COLUMN
- 203 x 203 x 46 MILD STEEL H-SECTION SLANTED COLUMN

DETAIL 6  
scale 1:50





DETAIL 7  
scale 1:50



DETAIL 1  
scale 1:50





# northern



135 *f* *pp* *cresc.* *mf* *pp*

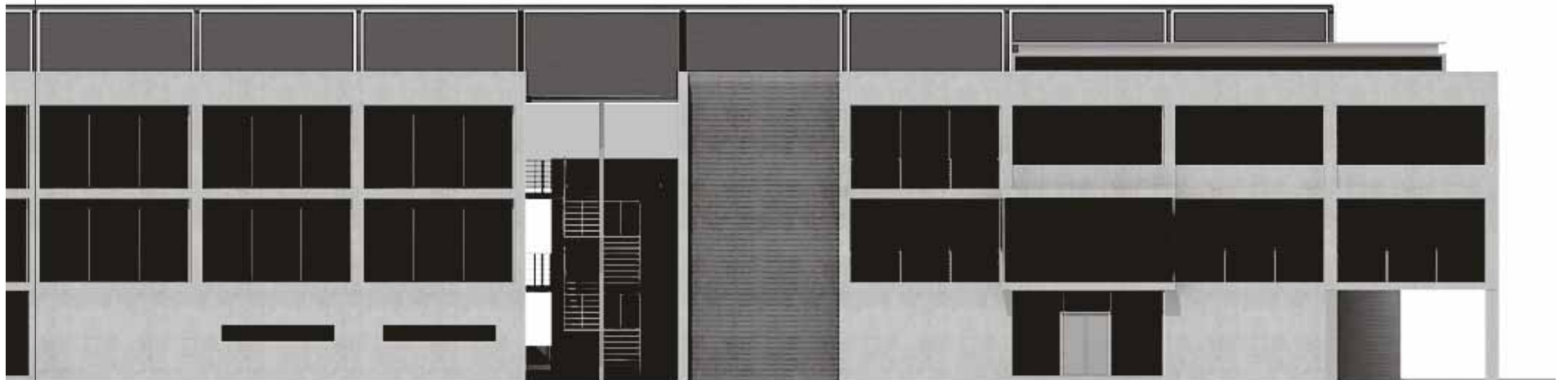
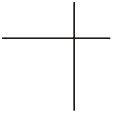


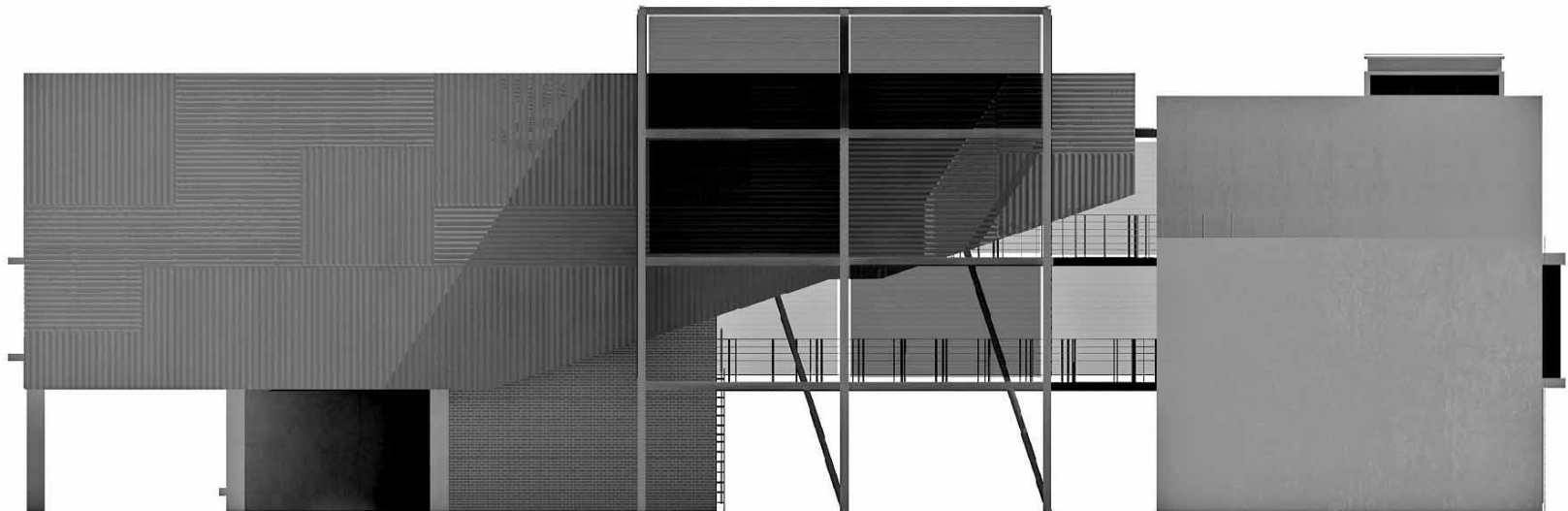
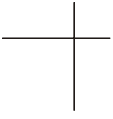


FIG. 8.1

137 *f* *pp* *cresc.* *mf* *pp*

The image shows a musical staff with a treble clef and a key signature of one sharp (F#). The notation includes a series of notes and rests. Dynamic markings are placed below the staff: *f* (forte) at the beginning, *pp* (pianissimo) in the middle, *cresc.* (crescendo) above the staff, *mf* (mezzo-forte) in the middle, and *pp* (pianissimo) at the end. The number 137 is written in a box at the start of the staff.

# eastern



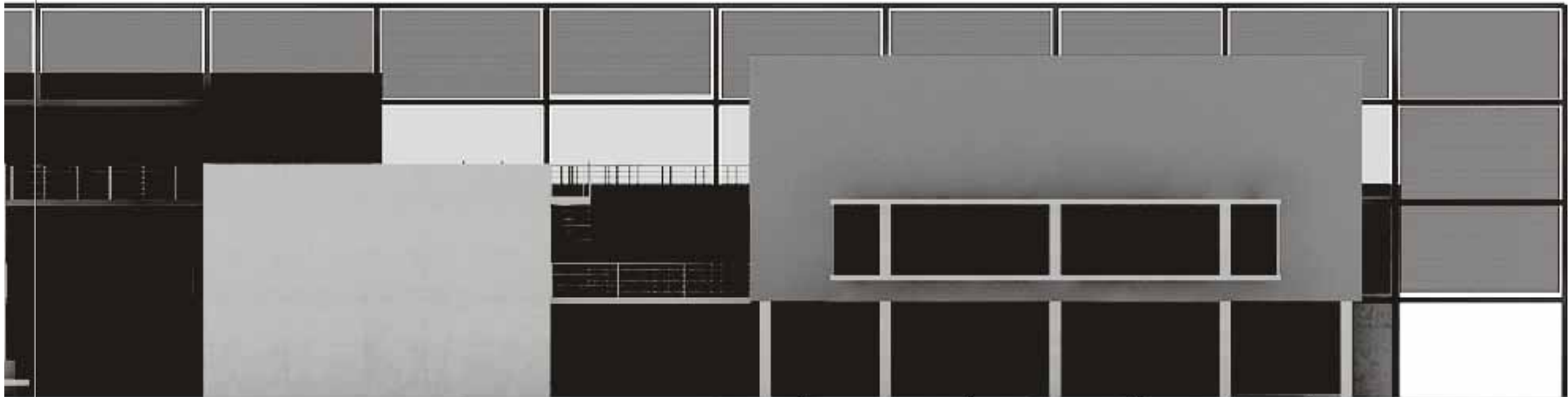


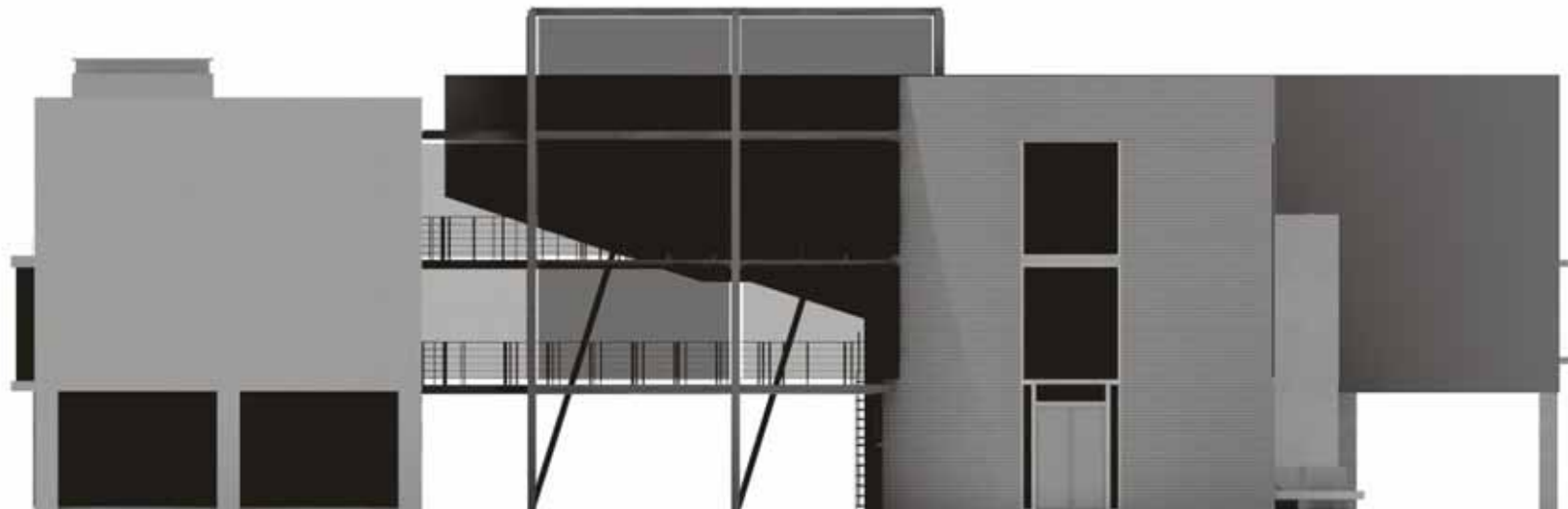
139 *f* *pp* *cresc.* *mf* *pp*



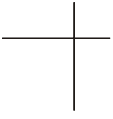


# southern





141 *f* *pp* *cresc.* *mf* *pp*



# western





143

*f* *pp* *cresc.* *mf* *pp*

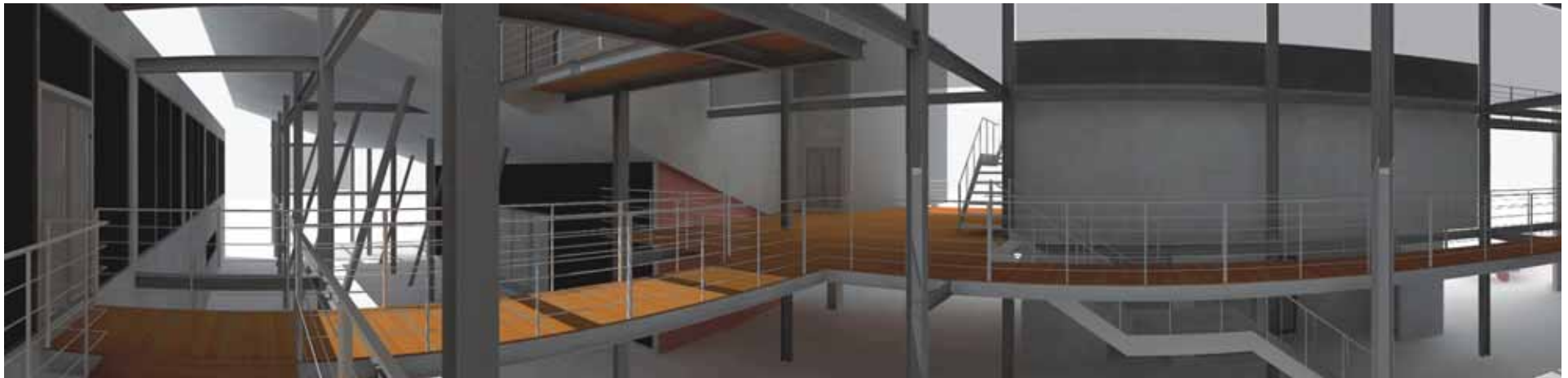
The image shows a single staff of musical notation. It begins with a treble clef and a key signature of one sharp (F#). The notation includes a series of notes and rests. The first measure contains a quarter note on G4 and an eighth note on A4. The second measure contains a quarter rest. The third measure contains a quarter note on G4. The fourth measure contains a quarter note on F#4. The fifth measure contains a quarter note on E4. The sixth measure contains a quarter note on D4. The seventh measure contains a quarter note on C4. The eighth measure contains a quarter note on B3. The ninth measure contains a quarter note on A3. The tenth measure contains a quarter note on G3. The eleventh measure contains a quarter note on F#3. The twelfth measure contains a quarter note on E3. The thirteenth measure contains a quarter note on D3. The fourteenth measure contains a quarter note on C3. The fifteenth measure contains a quarter note on B2. The sixteenth measure contains a quarter note on A2. The piece ends with a double bar line and repeat dots.



FIG. 8.2 South Eastern view of auditorium

# 3D COMPUTER MODEL





145 *f* *pp* *cresc.* *mf* *pp*



FIG. 8.3 Panoramic view of interior



FIG. 8.4 Internal walkways

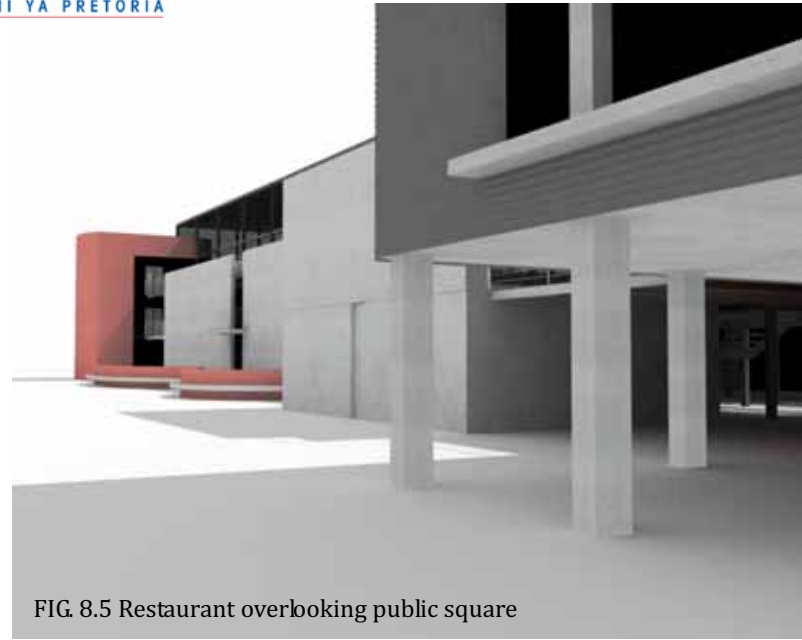


FIG. 8.5 Restaurant overlooking public square



FIG. 8.6 Artists courtyard



FIG. 8.7 Framed view of House Jansen

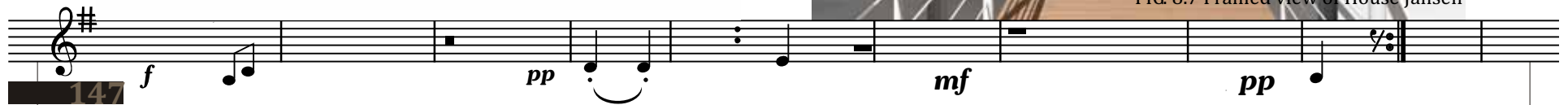






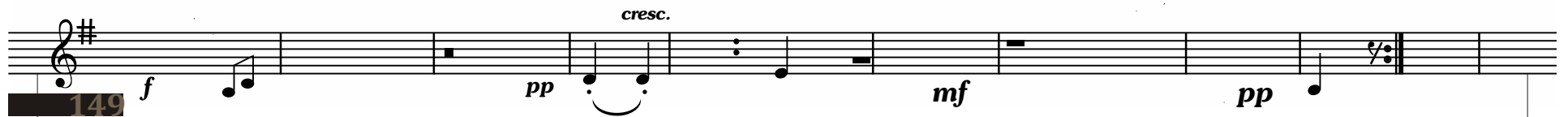
FIG. 8.8



FIG. 8.9



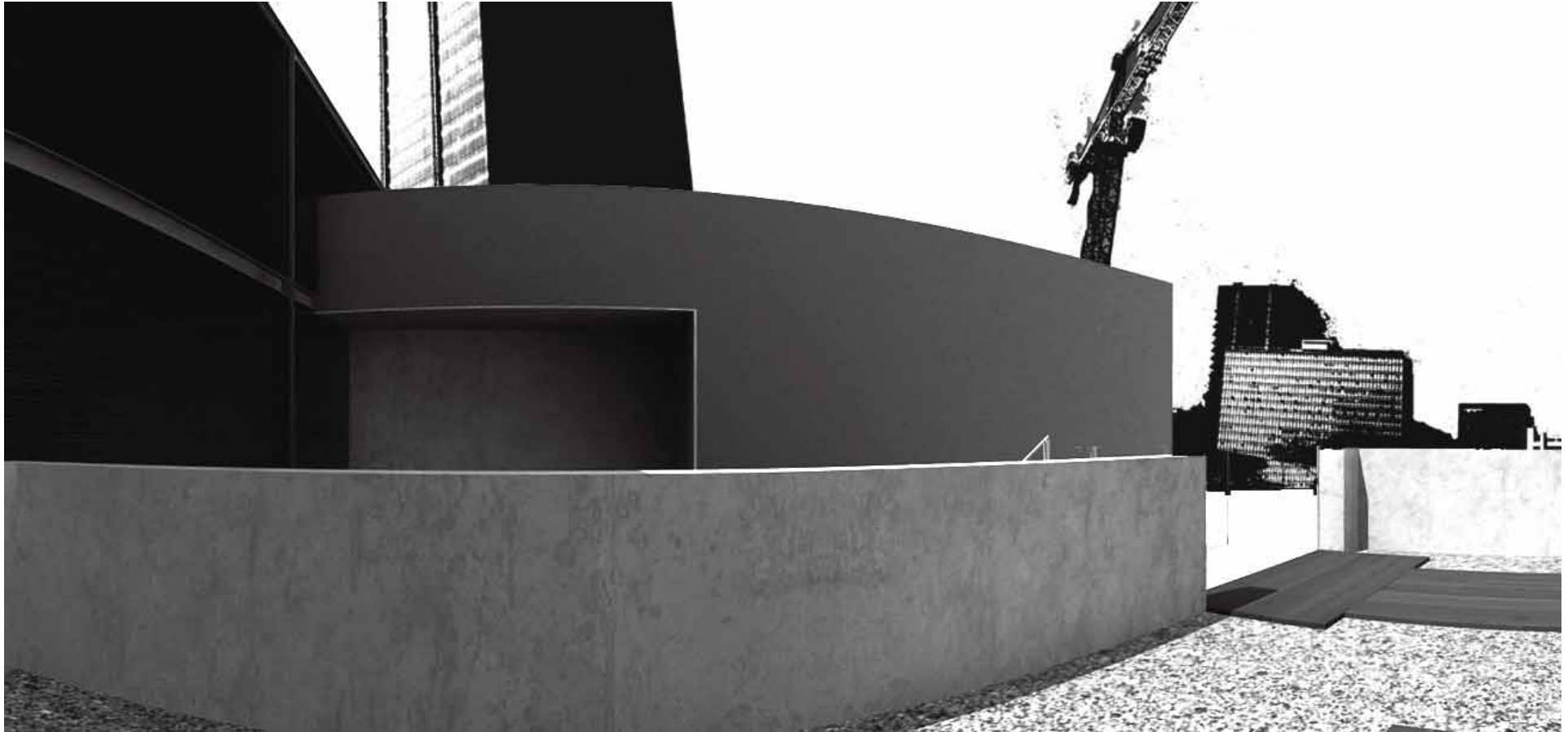
northern





northern





151 *f* *pp* *cresc.* *mf* *pp*

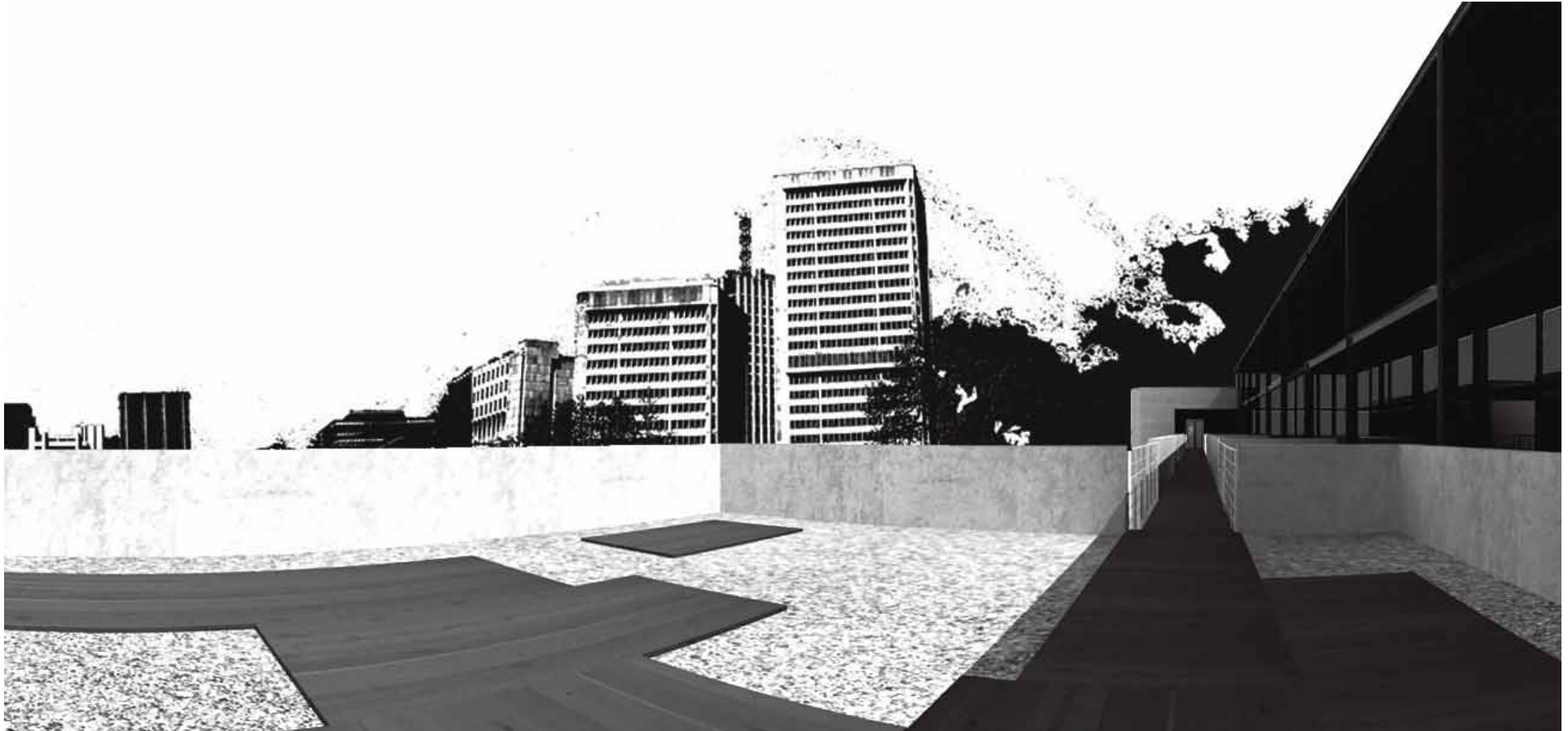


FIG. 8.11 Panoramic view of city from proposed project



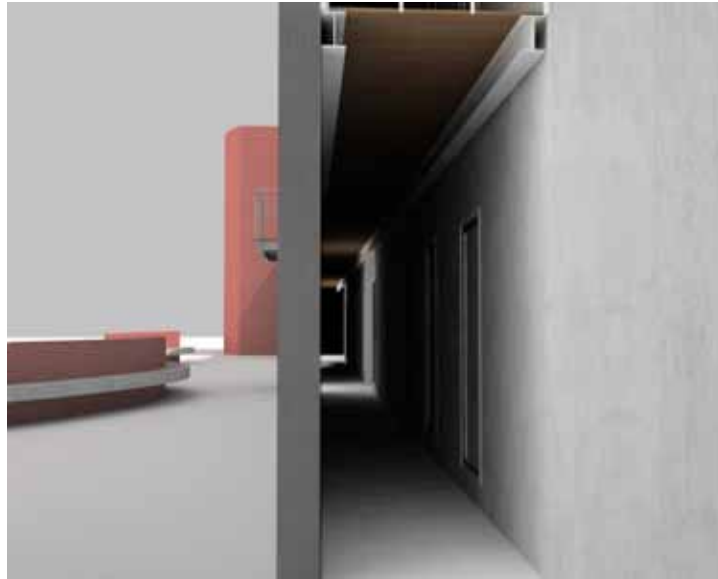
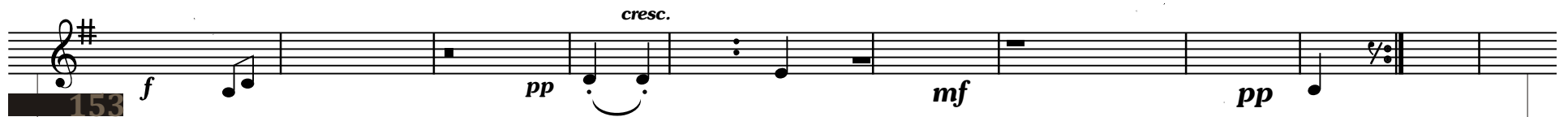


FIG. 8.12 Practice rooms



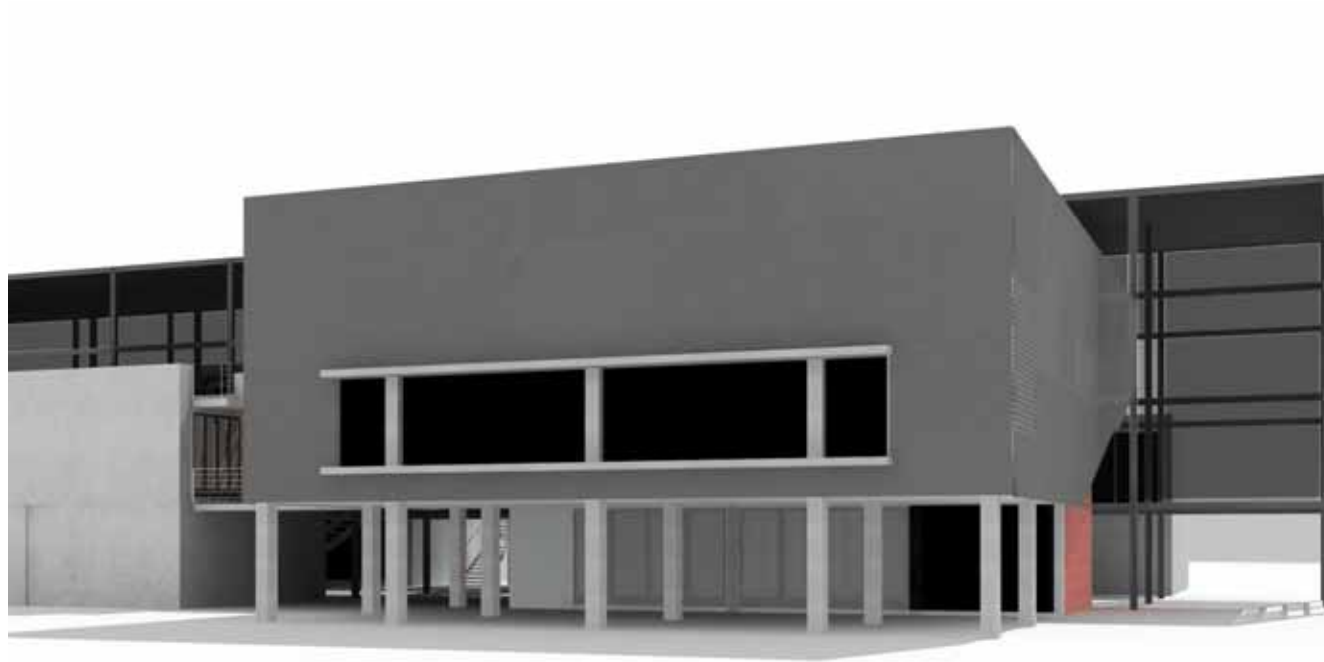


FIG. 8.13 Public square

