

7. Technical Resolution

Structural diagrams and calculations

Fig. 121: Structural cores (Author, 2010).

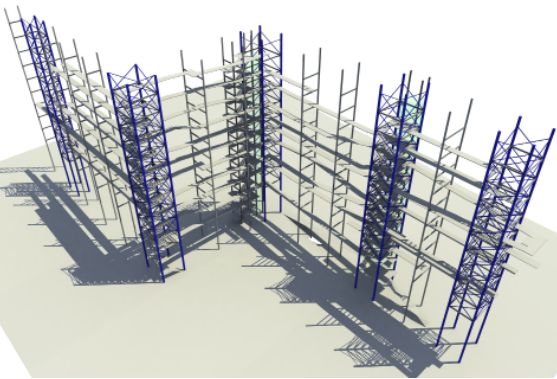


Fig. 122: Circulation cores (Author, 2010).

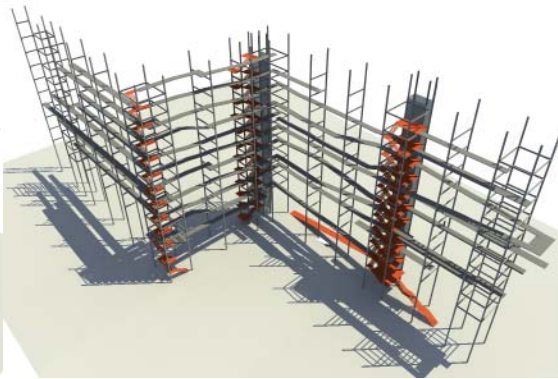


Fig. 123: Secondary bracing in terms of girders and joists (Author, 2010).

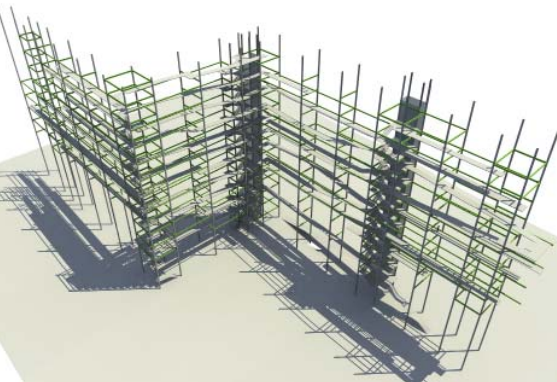
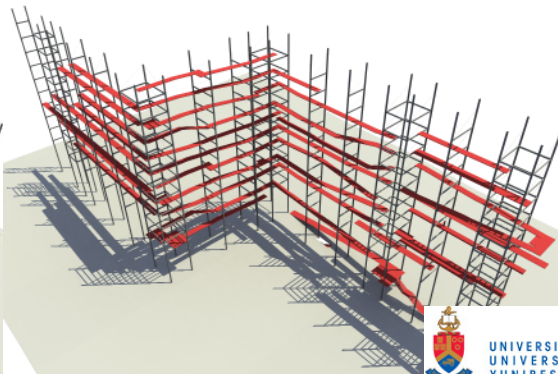


Fig. 124: Walkway system in the structure (Author, 2010).



COLUMNS $h/d = 7-18$

$$\frac{4000}{320} = 12.5$$

∴ 305 x 305 x 137 H-SECTION

GIRDERS $l/d = 15-20$

$$\frac{6000}{310} = 19.35$$

∴ 305 x 165 x 54 I-SECTION

JOIST $l/d = 15-20$

$$\frac{5500}{305} = 18.03$$

∴ 305 x 165 x 41 I-SECTION

COMPOSITE BEAM (STEEL + CONCRETE) $\frac{7500}{540} = 13.8$

$$l/d = 8-15$$

∴ 533 x 210 x 109 I-SECTION

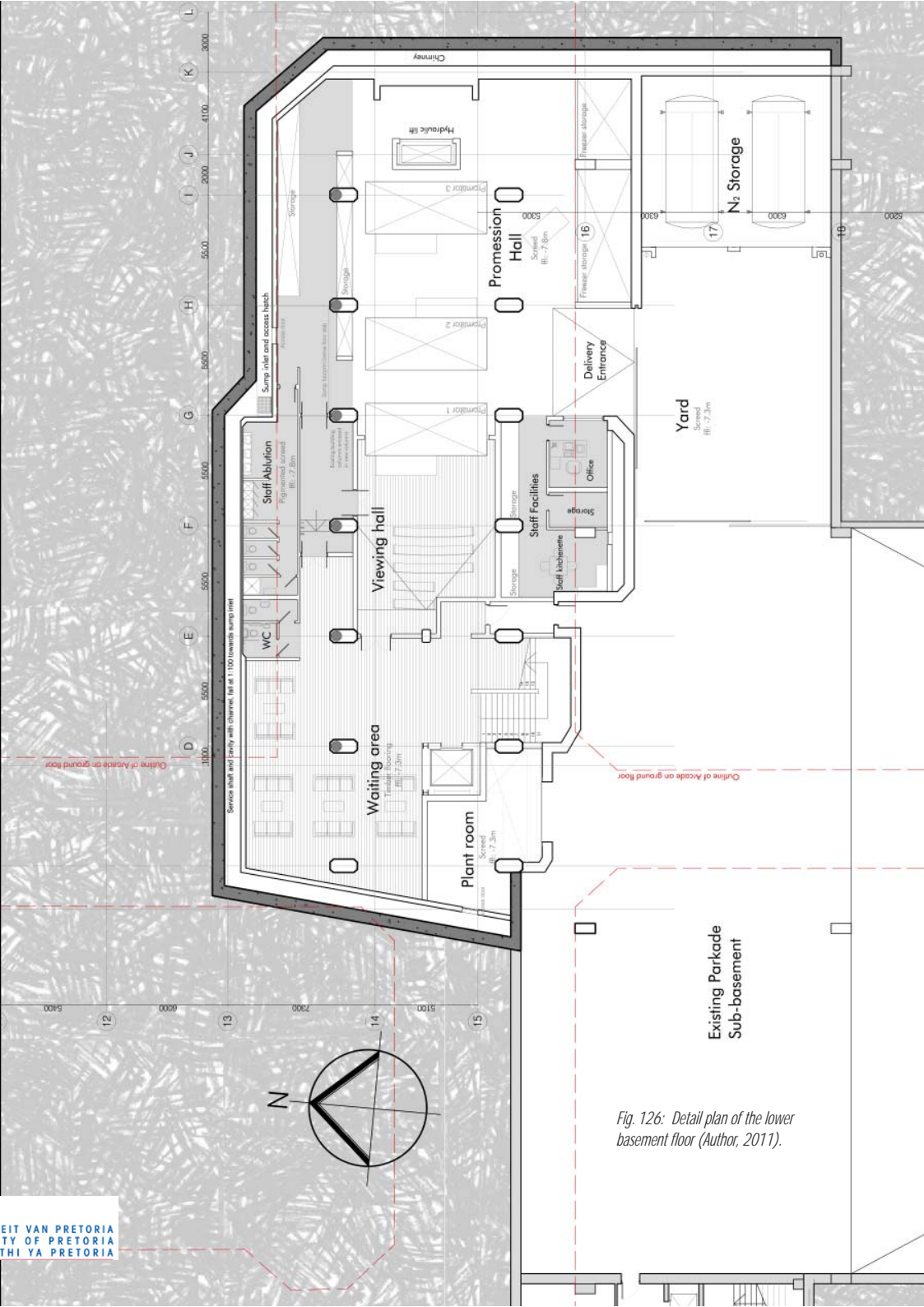
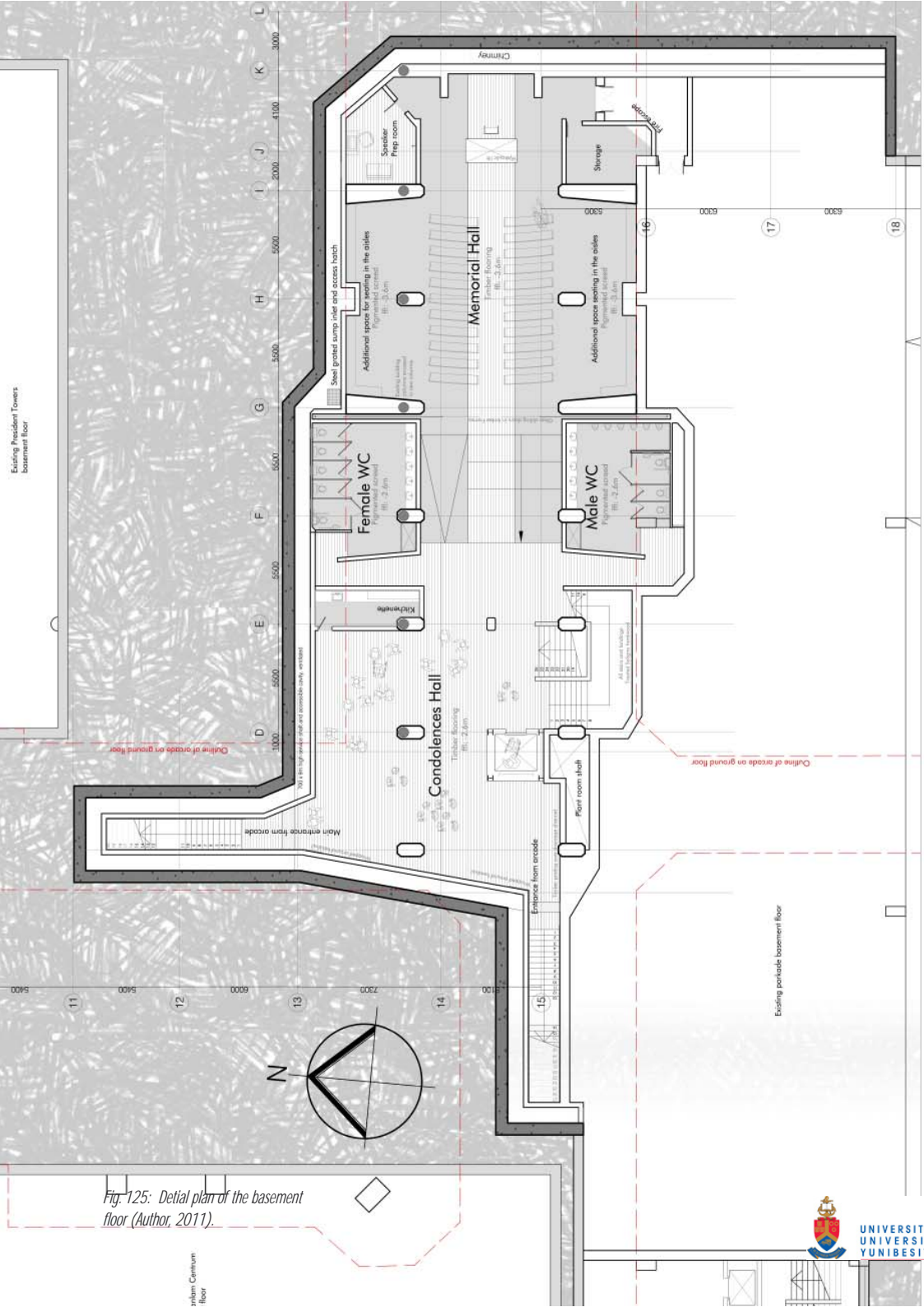


Fig. 125: Detail plan of the basement floor (Author, 2011).

Fig. 126: Detail plan of the lower basement floor (Author, 2011).

Walkway conditions

The walkway is a representation of perceptions and cultural norms, enveloped in human life. The change in materiality of the walkway represents how perceptions and norms of life and death in the urban reals can change over time.

Condition 1

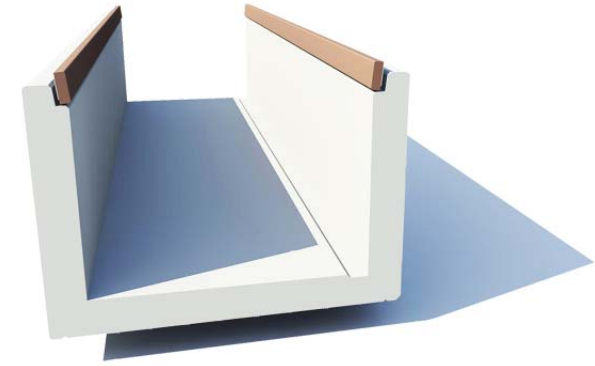
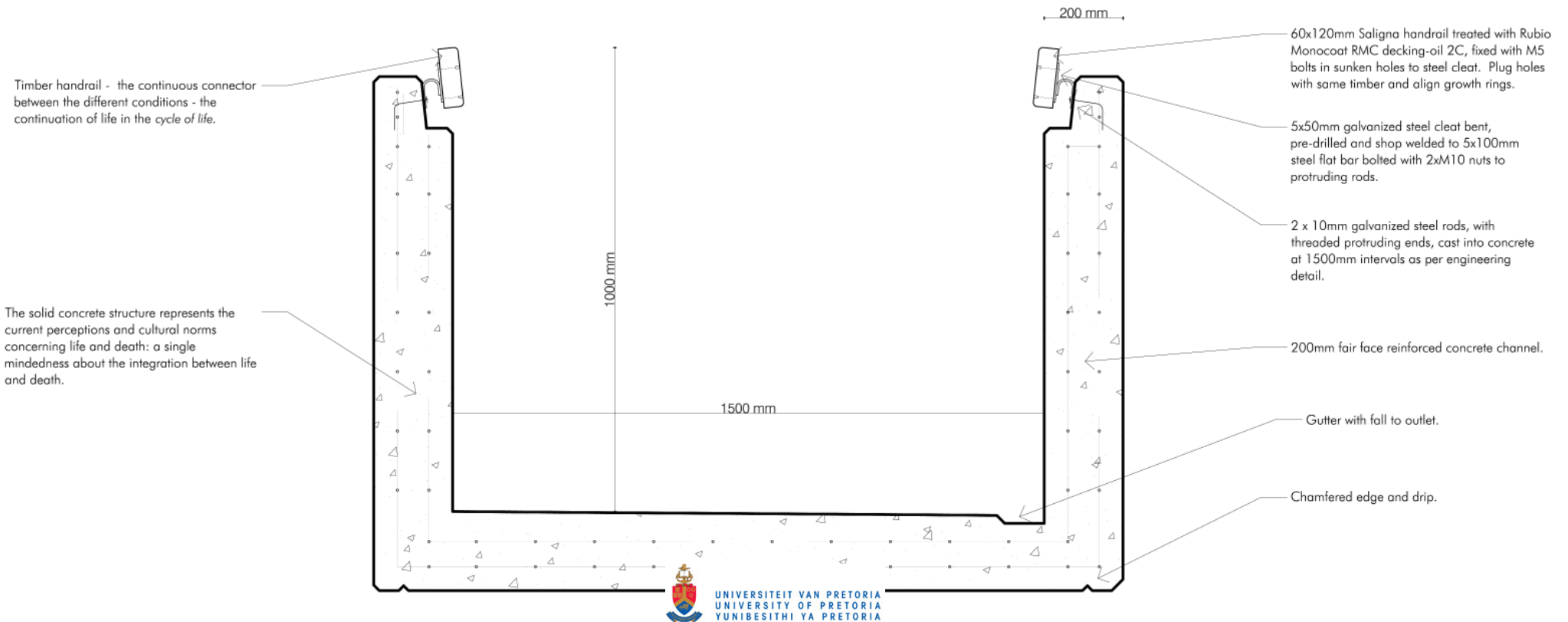
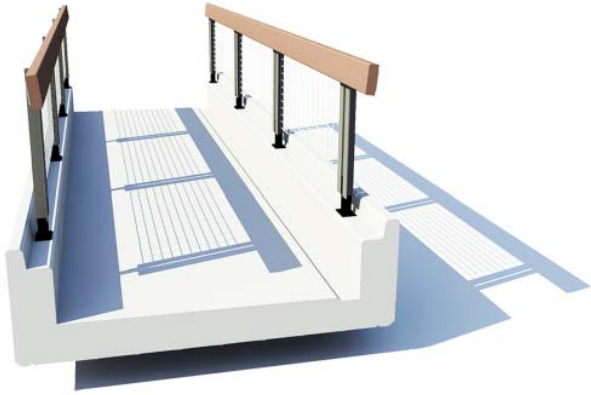


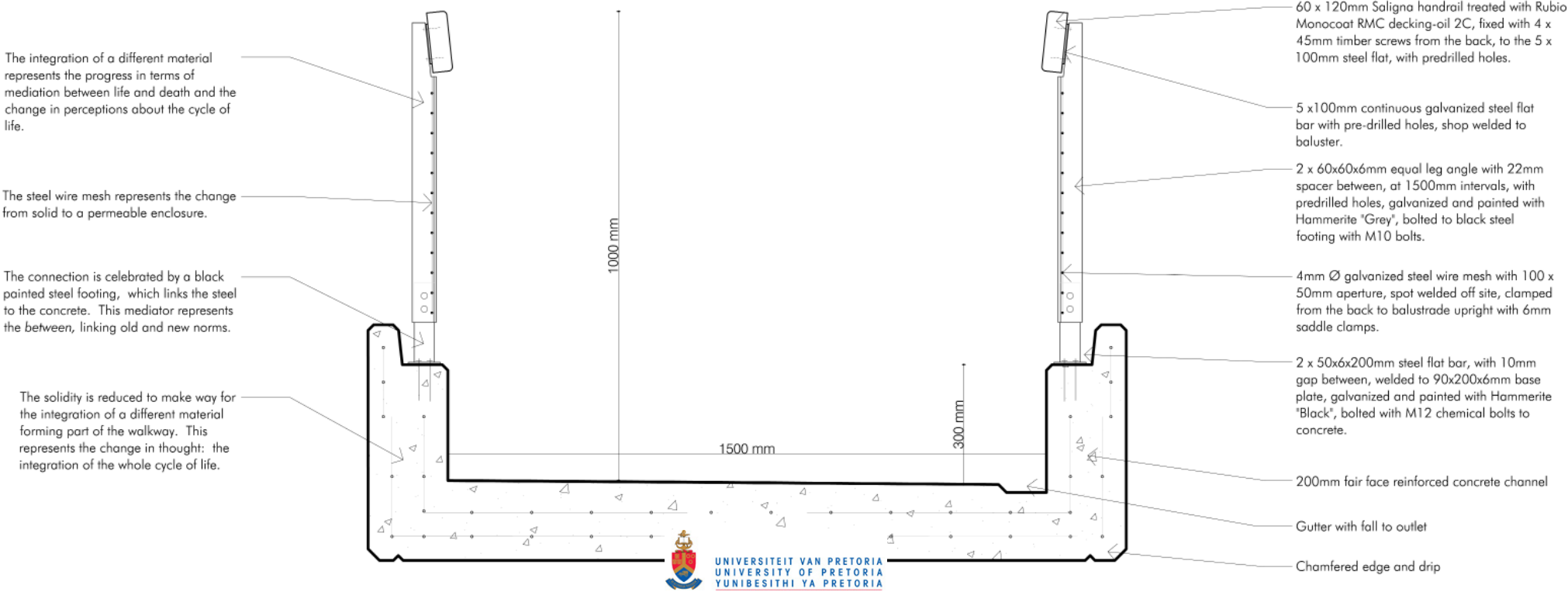
Fig. 127: Walkway condition 1 (Author, 2011).

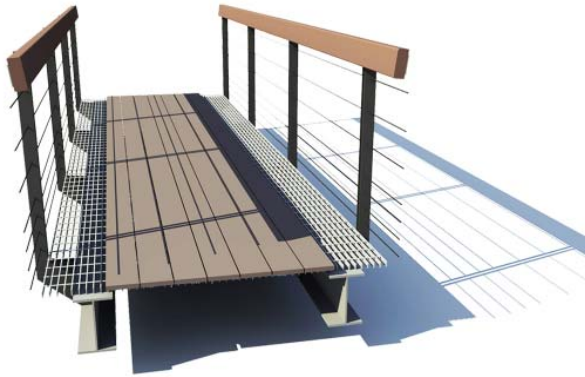




Condition 2

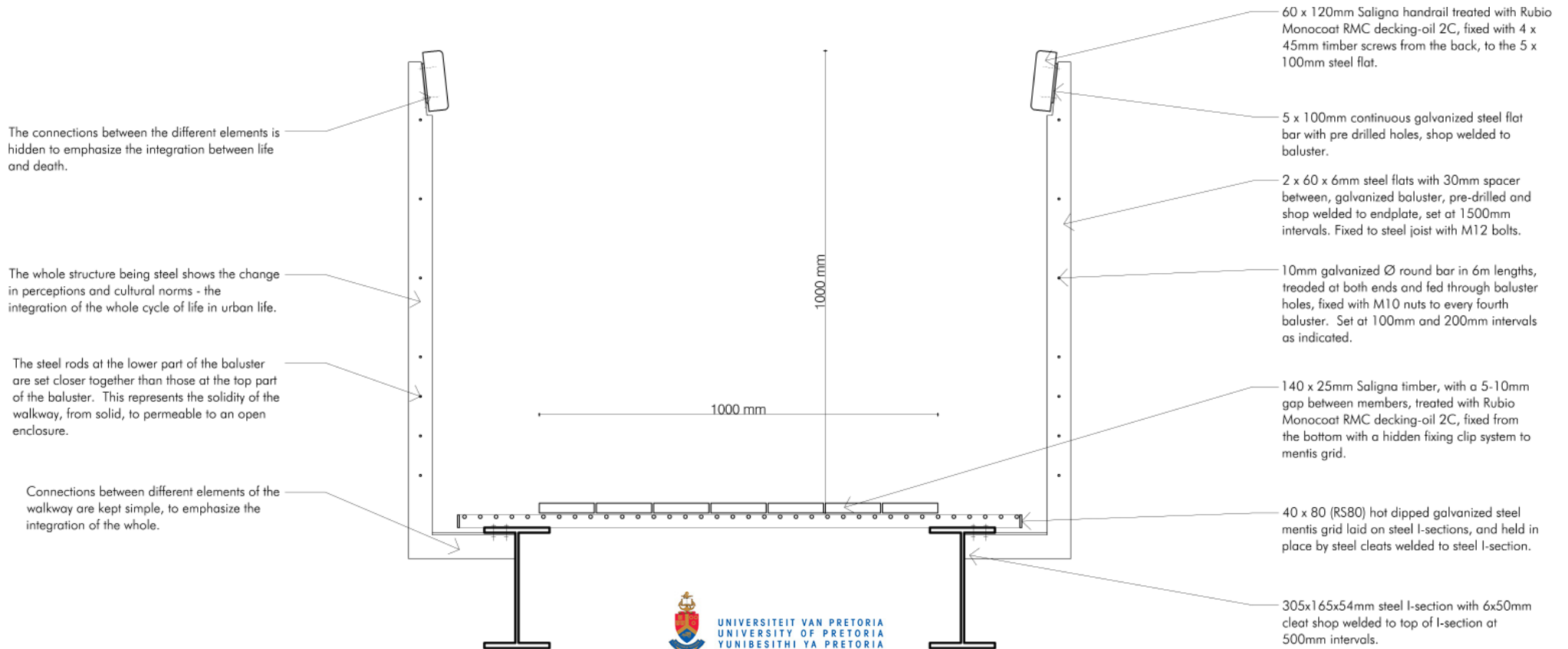
Fig. 128: Walkway condition 2
(Author, 2011).





Condition 3

Fig. 129: Walkway condition 3
(Author, 2011).



Bracing



Fig. 130: Bracing detail (Author, 2011).

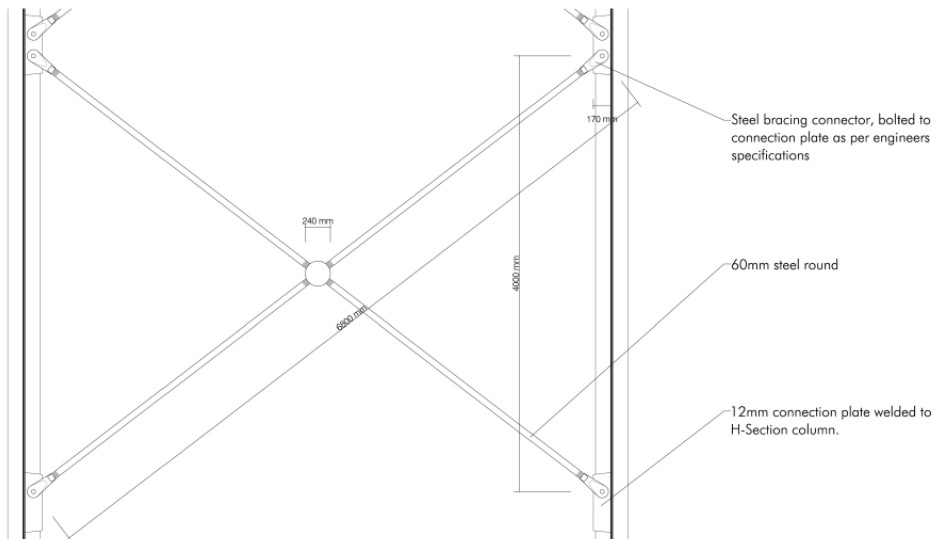
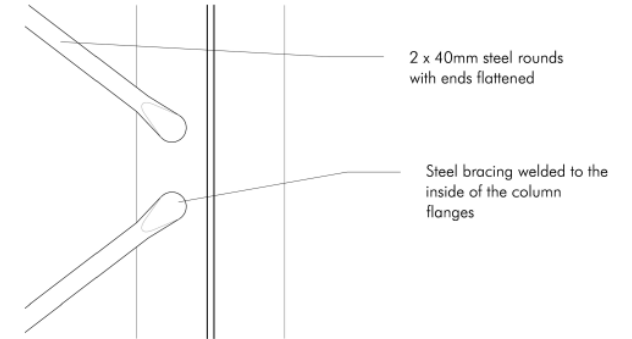


Fig. 131: (Opposite page) Different bracing conditions as the structure develops according to the different conditions (Author, 2011).

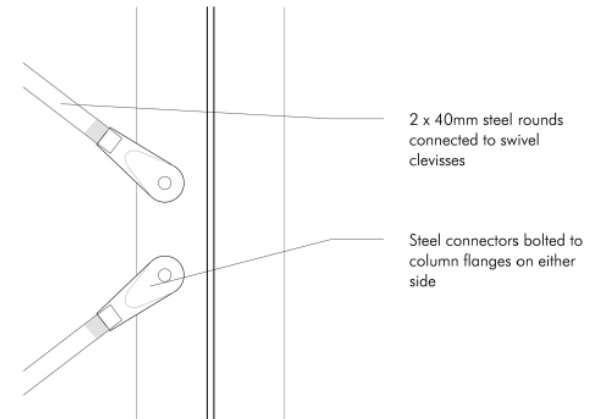
Bracing condition 3: the bracing is now integrated into the structural system by welding the bracing members to the column flanges, showing how the two entities become part of the same system: *life and death* ultimately being integrated.

CONDITION 3



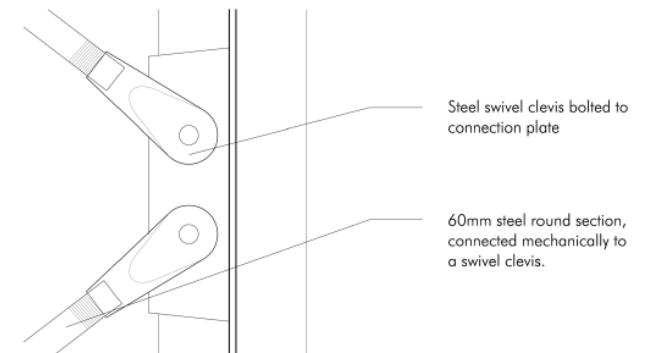
Bracing condition 2: a smaller section is used, made possible by employing two cross bracing members, connected to the flanges of the structural column. No connector plate. This implies the steady integration of the two structural systems, as the *between* mediates between two different entities - *life and death*.

CONDITION 2



Bracing condition 1: with the employment of a connector plate and bolts the mechanical connection between the two different structural systems is emphasized - *the between*.

CONDITION 1



Tanking detail

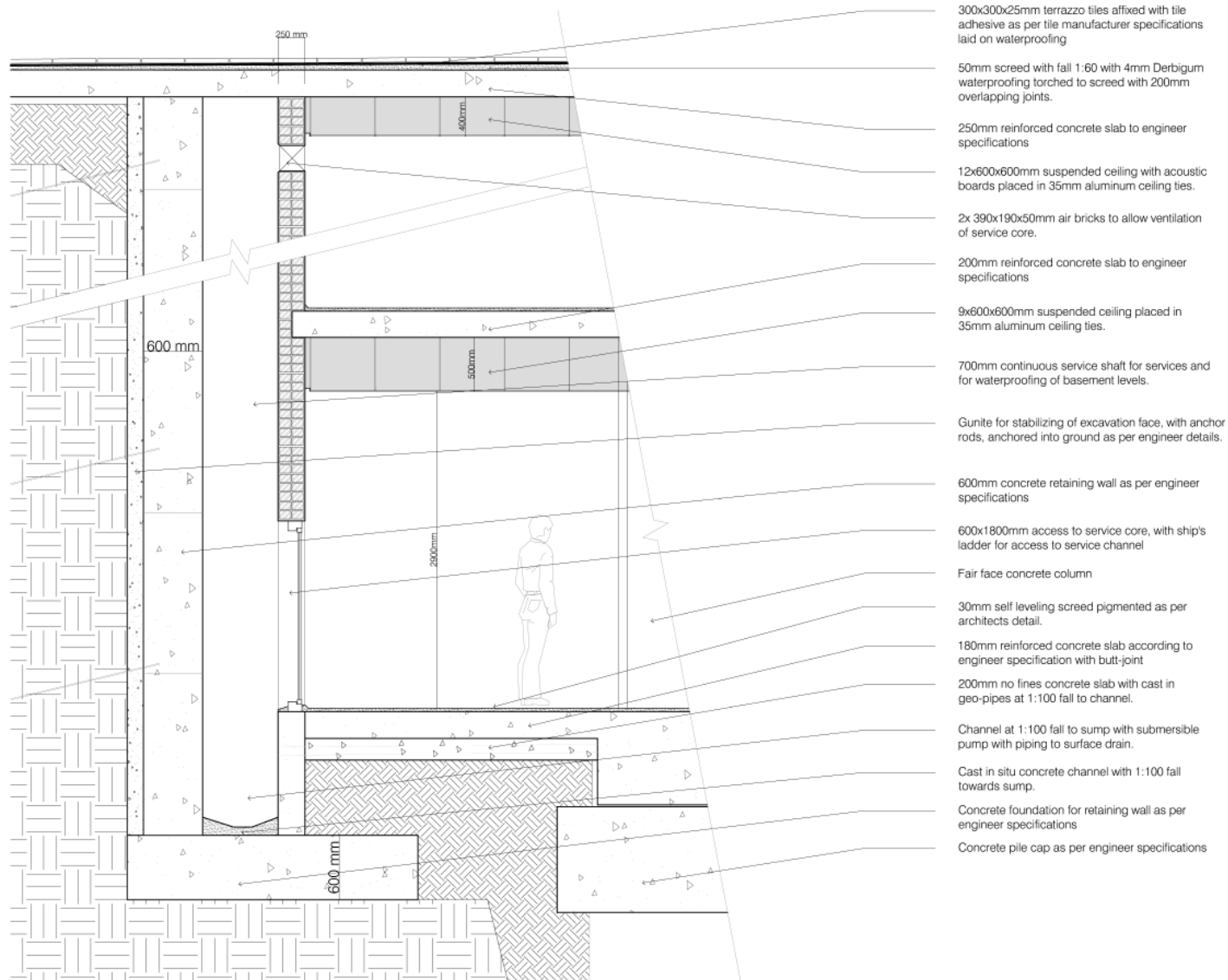


Fig. 132: Waterproofing detail (Author, 2011)..

Concrete entrance

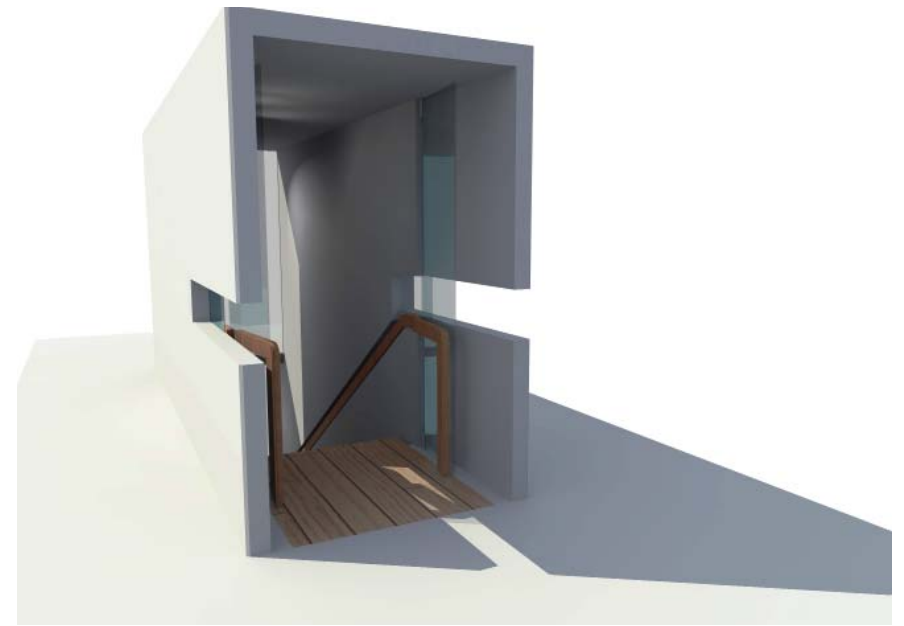
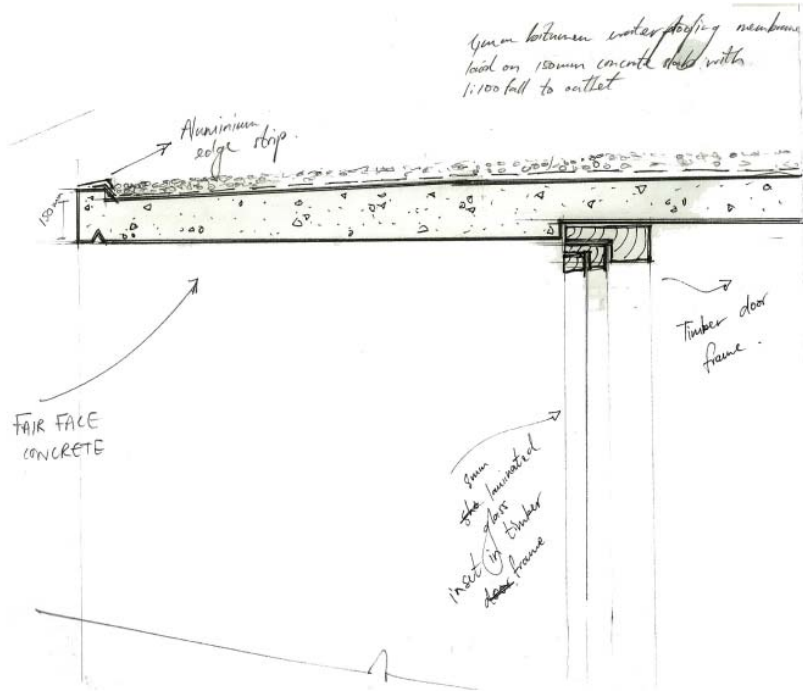
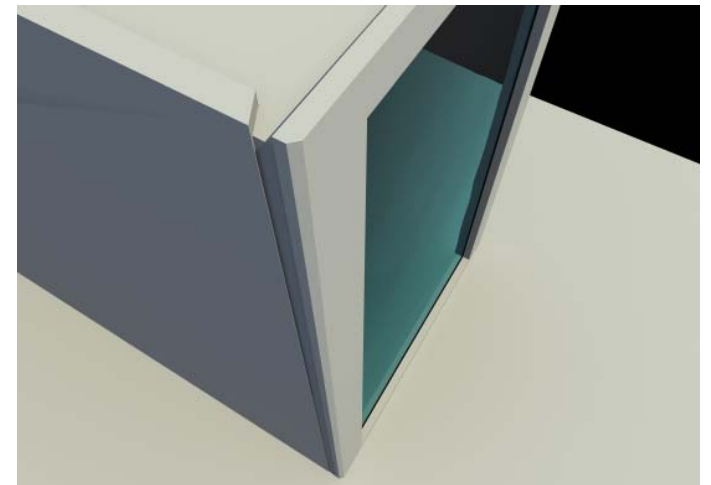
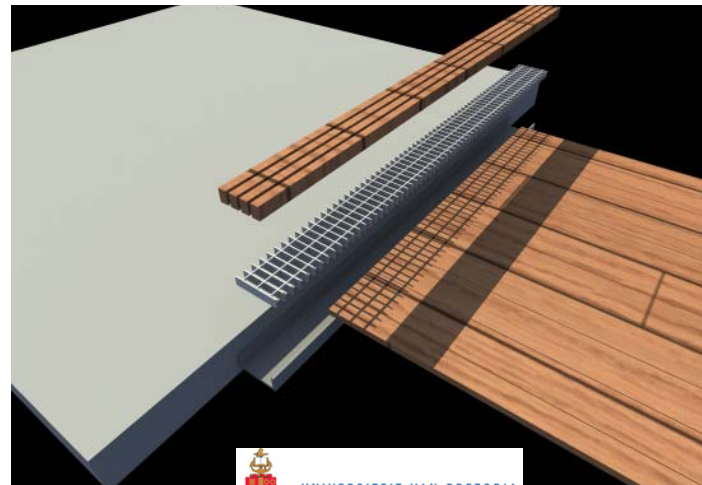


Fig. 133: Detail of concrete roof edge (Author, 2010).

Fig. 134: (opposite page left) Entrance, showing handrail (Author, 2010).

Fig. 135: (middle) Drainage in front of entrance. (Author, 2010)

Fig. 136: Drainage detail from concrete slab (Author, 2010).



Burial holder

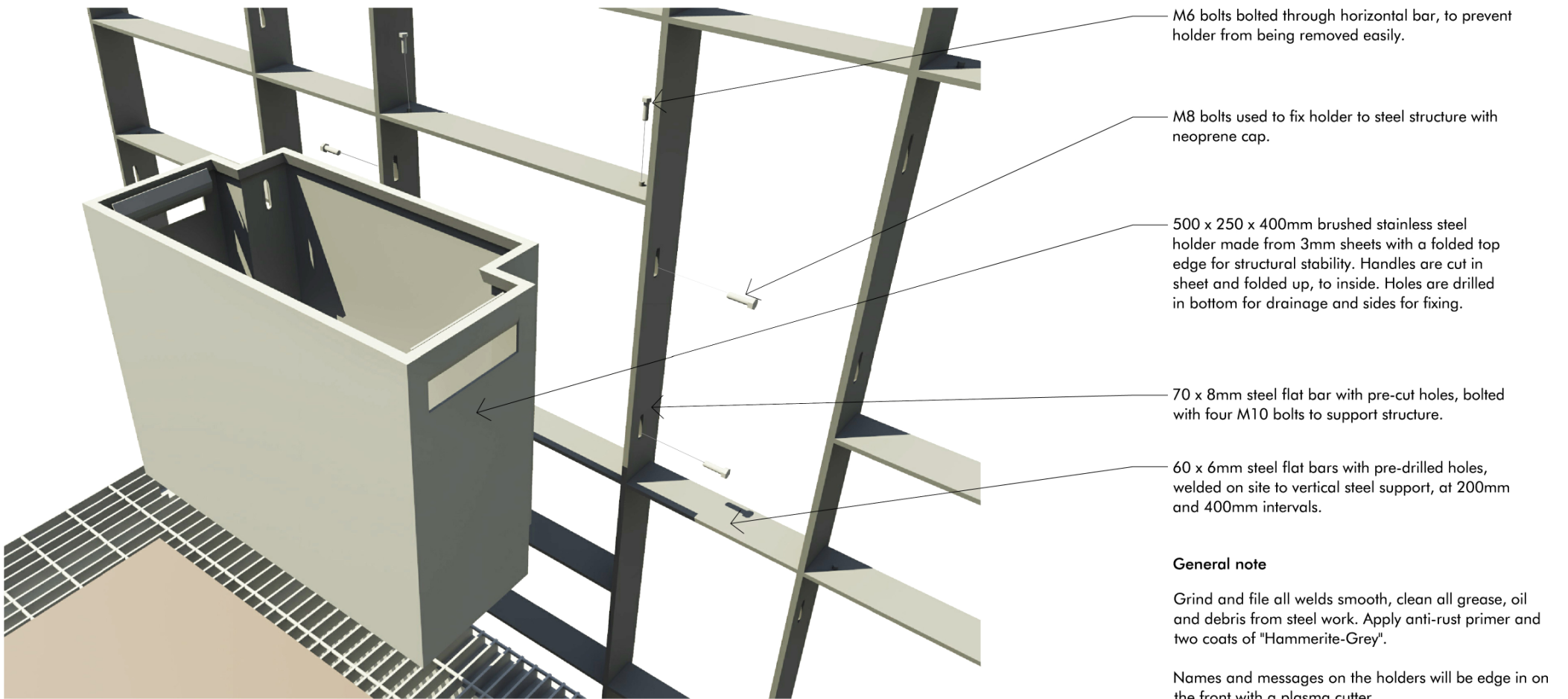


Fig. 137: Burial holder with drainage holes (Author, 2011).



Fig. 138: Burial holder detail (Author, 2011).

8. Conclusion

The place of remembrance investigates the ability of an architectural exploration to respectfully challenge conventional cultural norms (Prassa, 2009) and create new perceptions of what an urban environment could be. It also considers the significance of appropriating the *between*, physically and meta-physically.

The investigation has led to the theoretical exploration of the *cycle of life*; defining the *between* (Heidegger, 1996); and the power of *collective dwelling* (Norberg-Schulz, 1985). In conclusion it explains how the introduction of the complete cycle of life into our cities may help to form a collective urban environment. It continues to explain that the inclusion needs not be of a grand symbolic nature, but can rather be in the form of a design narrative, which in this case will be housed in the *between* of the urban environment. The importance of the *between* helps to understand the significance man has placed on the physical manifestation of the meta-physical expression of collective dwelling.

The urban environment is explained as a place of activity and dynamic life. Unfortunately current circumstances have given death only peripheral

importance, both physically and meta-physically. It is the aim of this project to introduce the whole cycle of life into the urban environment: *celebrating life by exposing death*. Through the physical manifestation of a place of remembrance for the dead, a meta-physical awareness is fostered in collective urban life.

To achieve the inclusion of the whole cycle of life in the urban environment, a *between* found within the city was identified. A vertical park structure is sensitively introduced in this *between*. An alternative process called promession is implemented to help create the *vertical park* which includes the remains — as nutrients — in the soil, furthering the idea of *new life*.

The architectural expression is achieved by implementing counter balances of life and death; solid and void; vertical and horizontal; and physical and meta-physical. The vertical structure is articulated as a temporary structure through the use of steel as material. The structure reads as temporary, yet the function of housing the dead renders it permanent within the life of the city. The memorial service space and process of promession which are both used by the living to honour the dead (*celebrating life*), are placed beneath ground level, in a more solid, permanent structure. The processes housed in the structure though are temporary, and after the memorial service the living ascend from the space into the collective urban space and further into the place of remembrance above, to place the remains of the deceased permanently in the park structure.

Hierarchy is achieved through the use of vertical distribution, lingering spaces and thresholds, sensitively creating differentiation in the importance of spaces.

In the memorial space below ground, light is used to draw people through the different thresholds into the memorial hall, where the relationship between the mourner and the deceased is accentuated by light.

The place of remembrance, being found within the *between*, sensitively creates an awareness of the whole cycle of life. It does so by appropriating the *between*

and becoming an anti-monumental memorial in the city. The awareness of the loss of life is not imposed by monumental structures awkwardly placed in the urban environment. This process of infusing the *between* and creating a culture of urban life will take time. As time passes and the place of remembrance becomes accepted, several more can be built in the *between* spaces found in the city, creating a new culture of urban life.