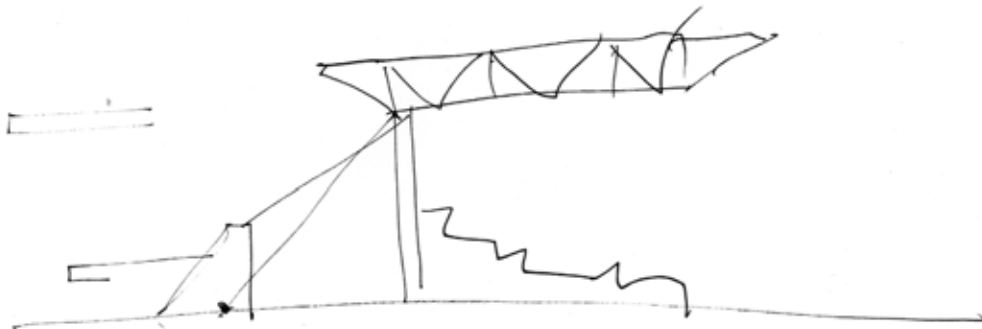


# 8 DRAWINGS

Van der Waal and associates (1999) give a description of the surroundings before canalisation of the rivers.

Moving down the river, towards the present Lion Bridge, the area was densely covered with reeds and rushes, making a safe lair not only for lions, but also for jackals and hyenas whose roars and cries resounded nightly along the mountains.



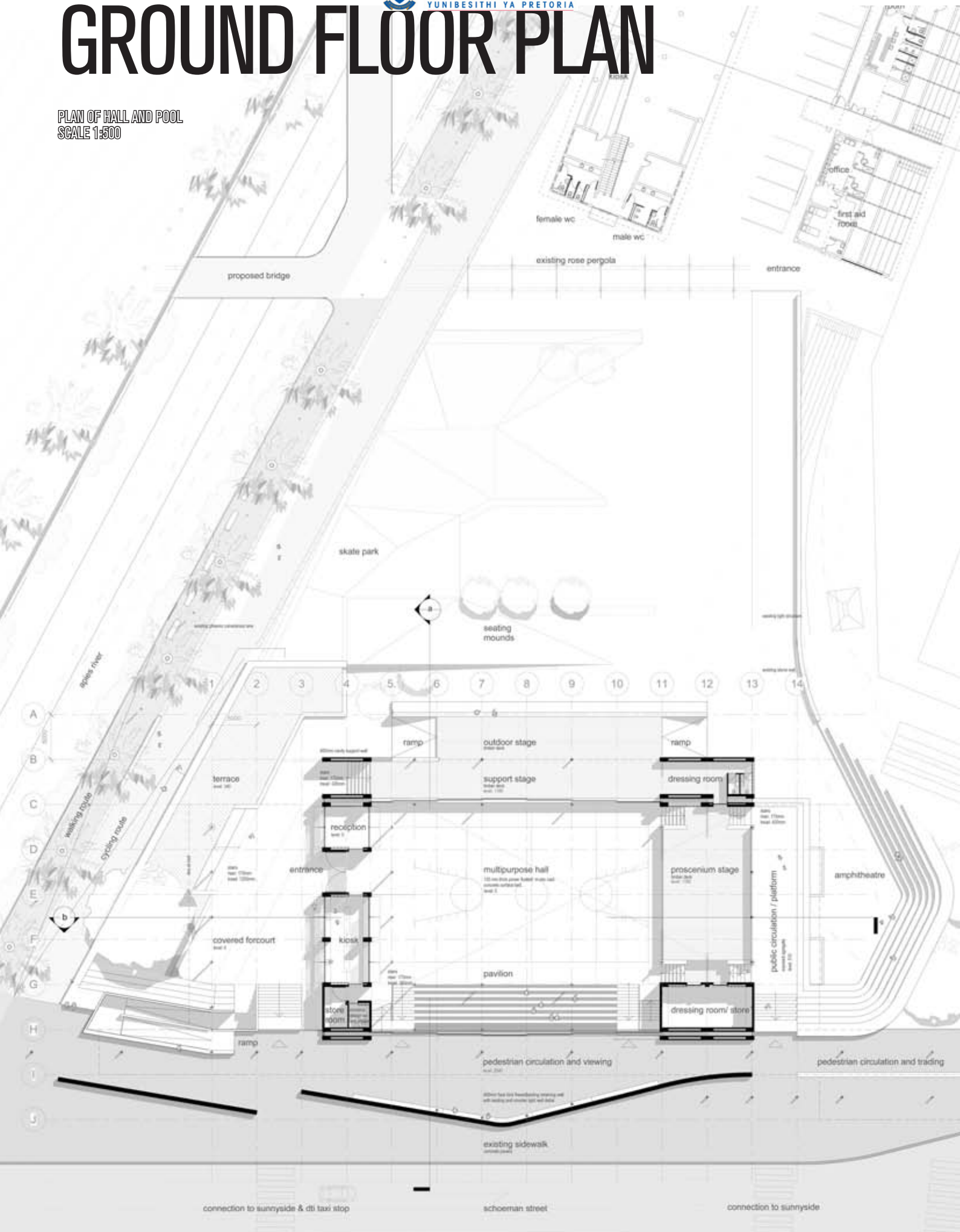
**FIGURE 75**  
*Pavilion profile.*



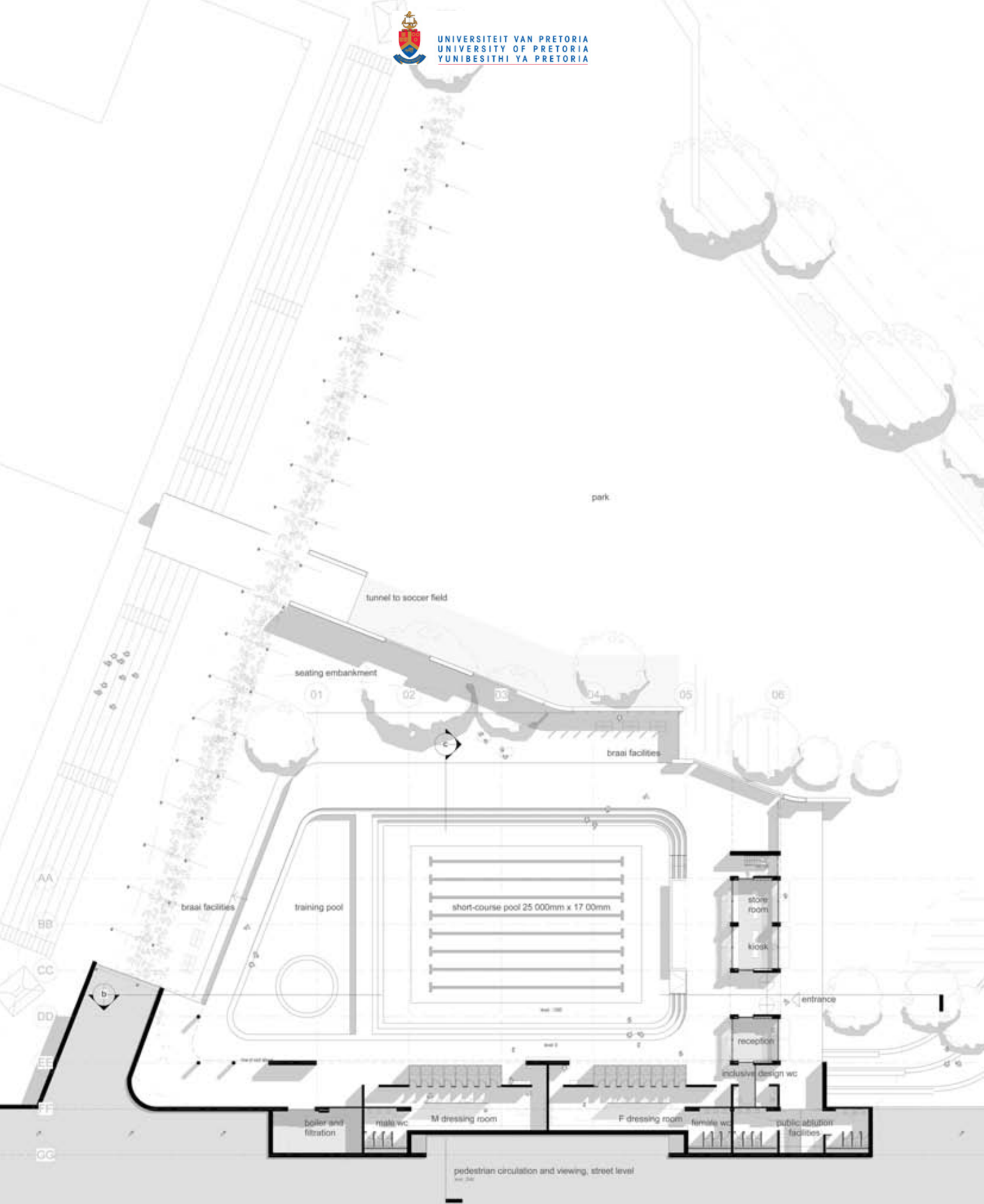


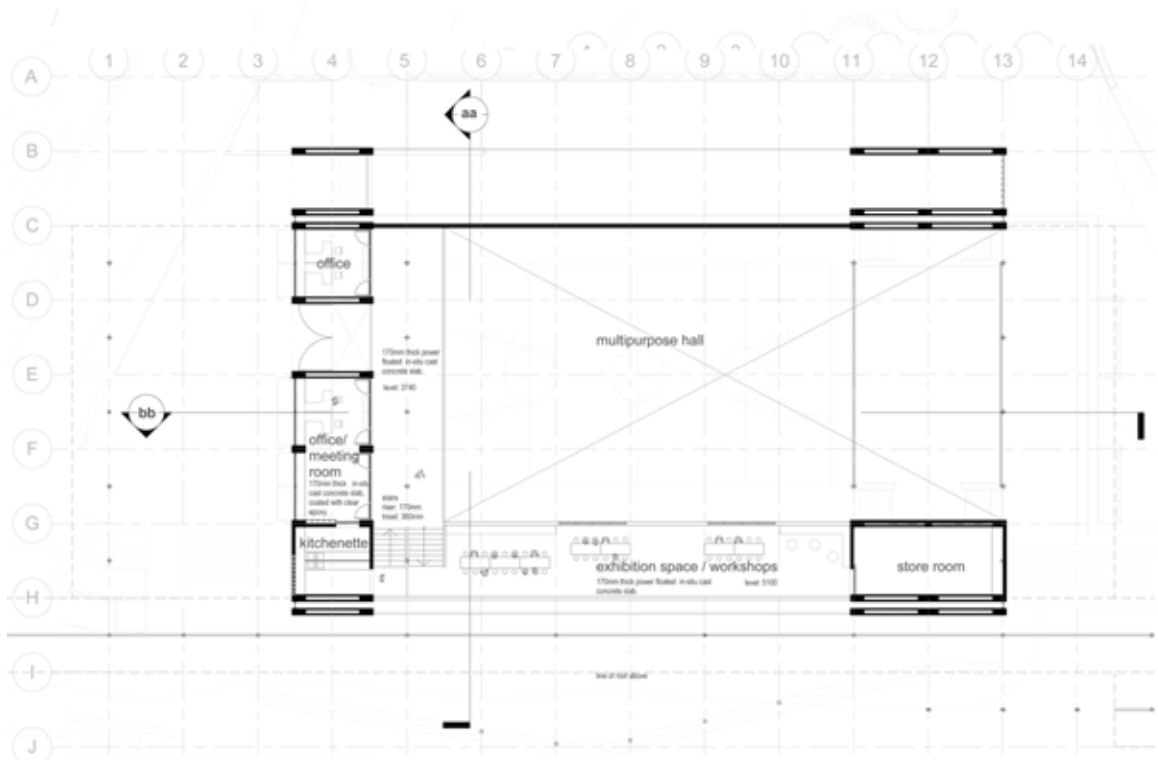
# GROUND FLOOR PLAN

PLAN OF HALL AND POOL  
SCALE 1:500

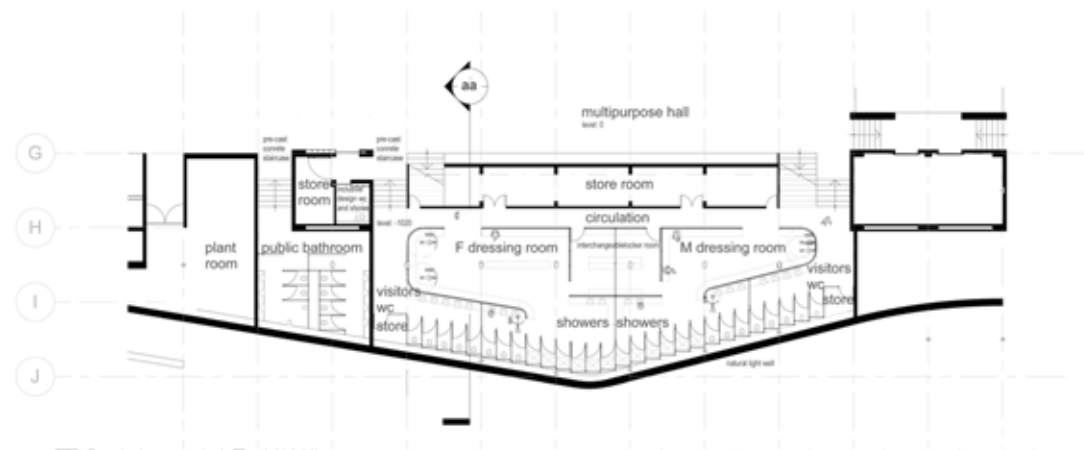




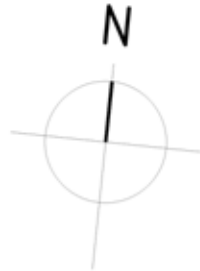




# first floor plan



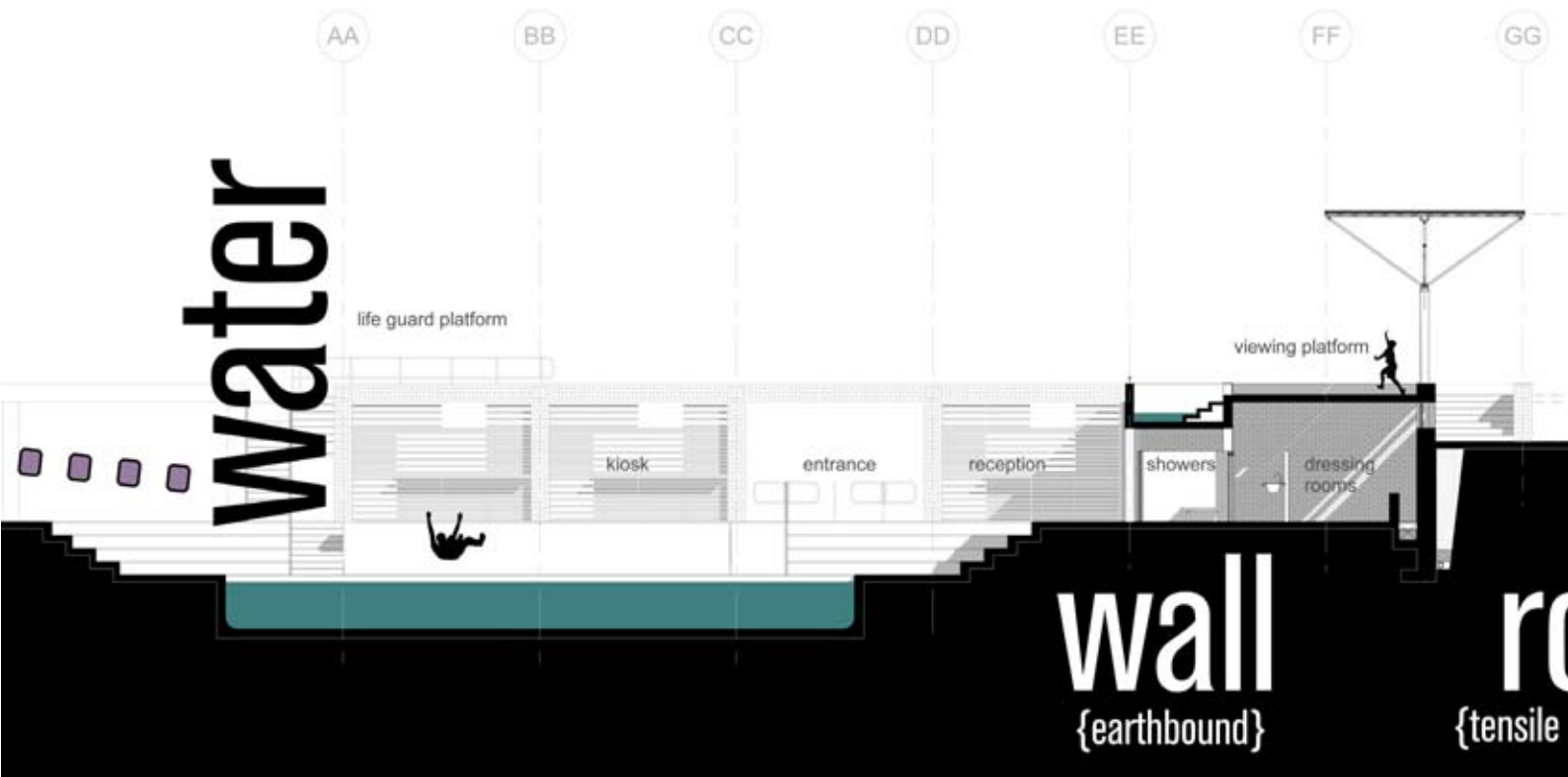
# basement plan

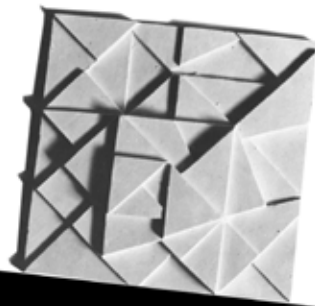


# SECTION 3



UNIVERSITEIT VAN PRETORIA  
UNIVERSITY OF PRETORIA  
YUNIBESITHI YA PRETORIA



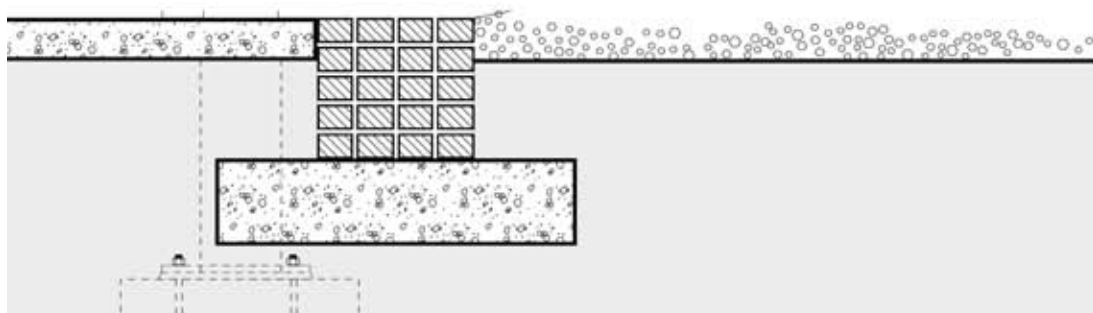
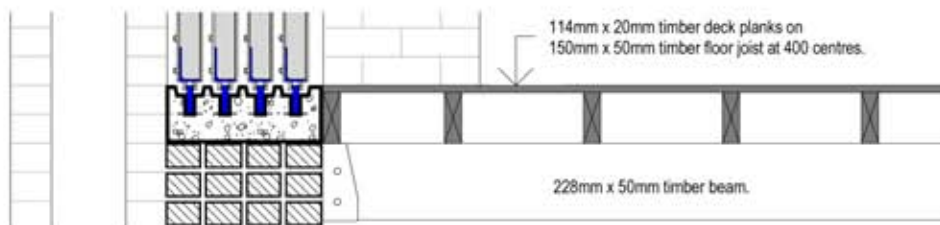
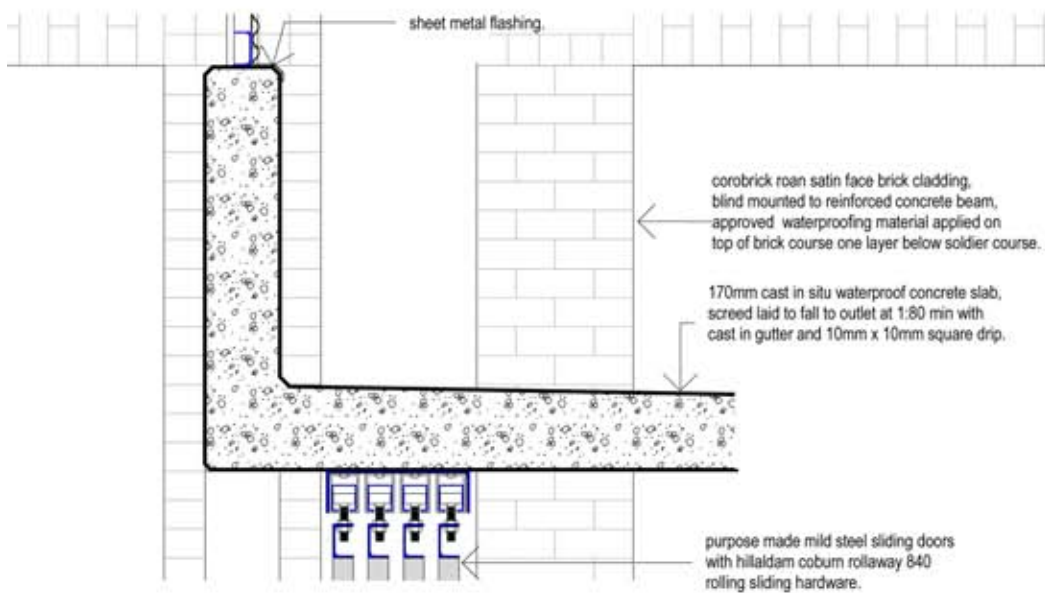
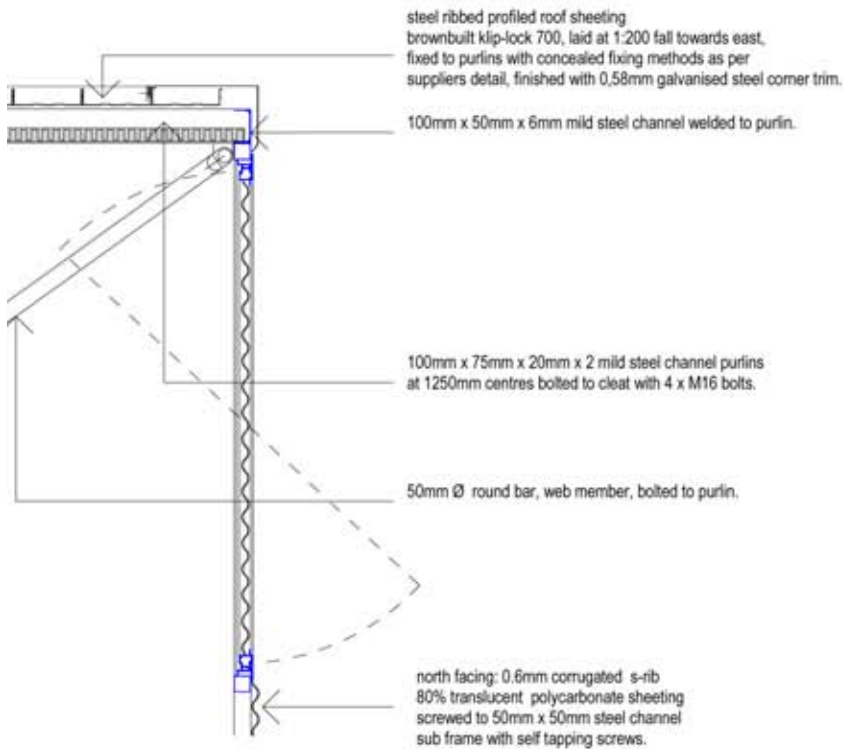


*texture* 

oof of  
{lightweight} {itweight}

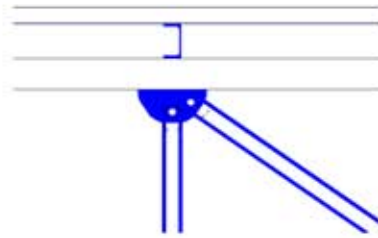
surface  
{sculpting the earth}



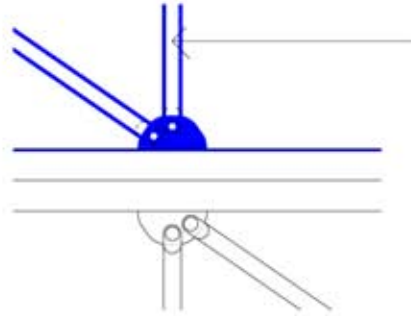


detail a

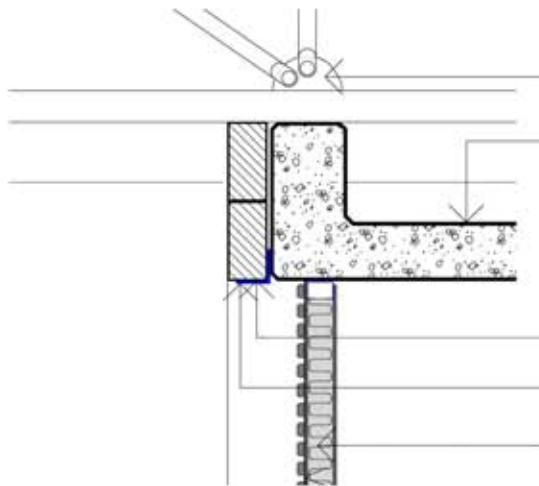
1:20



50mm Ø round bar, web member, bolted to purlin.



50mm Ø Mild steel hollow round section  
pin jointed between gusset plates acc to ENG's  
detail and spec.



10mm Thick mild steel gusset fixing plate welded to  
truss acc to ENG's detail and spec.

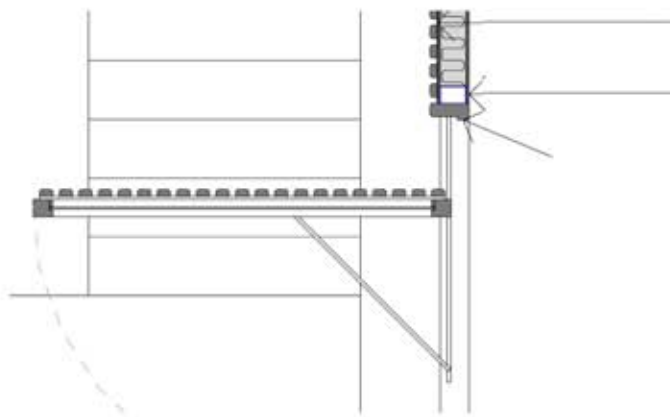
LAFARGE Ultra Waterproof RC Concrete slab and upstand  
acc to ENG's design.

Blind mounted 100x100x8mm thick mild steel channel fixed to  
concrete beam with chemical anchors to ENG's detail and spec.

Soldier course face brick exterior skin with flush joints.

75mm mineral fibre insulation.

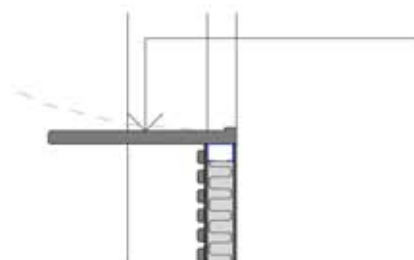
9mm Thick PG Bison commercial plywood fixed to  
mild steel frame with self tapping screws. Painted with  
Plascon Cashmere (Color: Orchid Bay GR-Y06).



20mm x 38mm Meranti slats fixed to drywall with counter sunk screws.  
Plascon Glatex 8 varnish to all exterior new wood.

75mm x 50mm x 2mm cold-formed lipped-channel section frame.

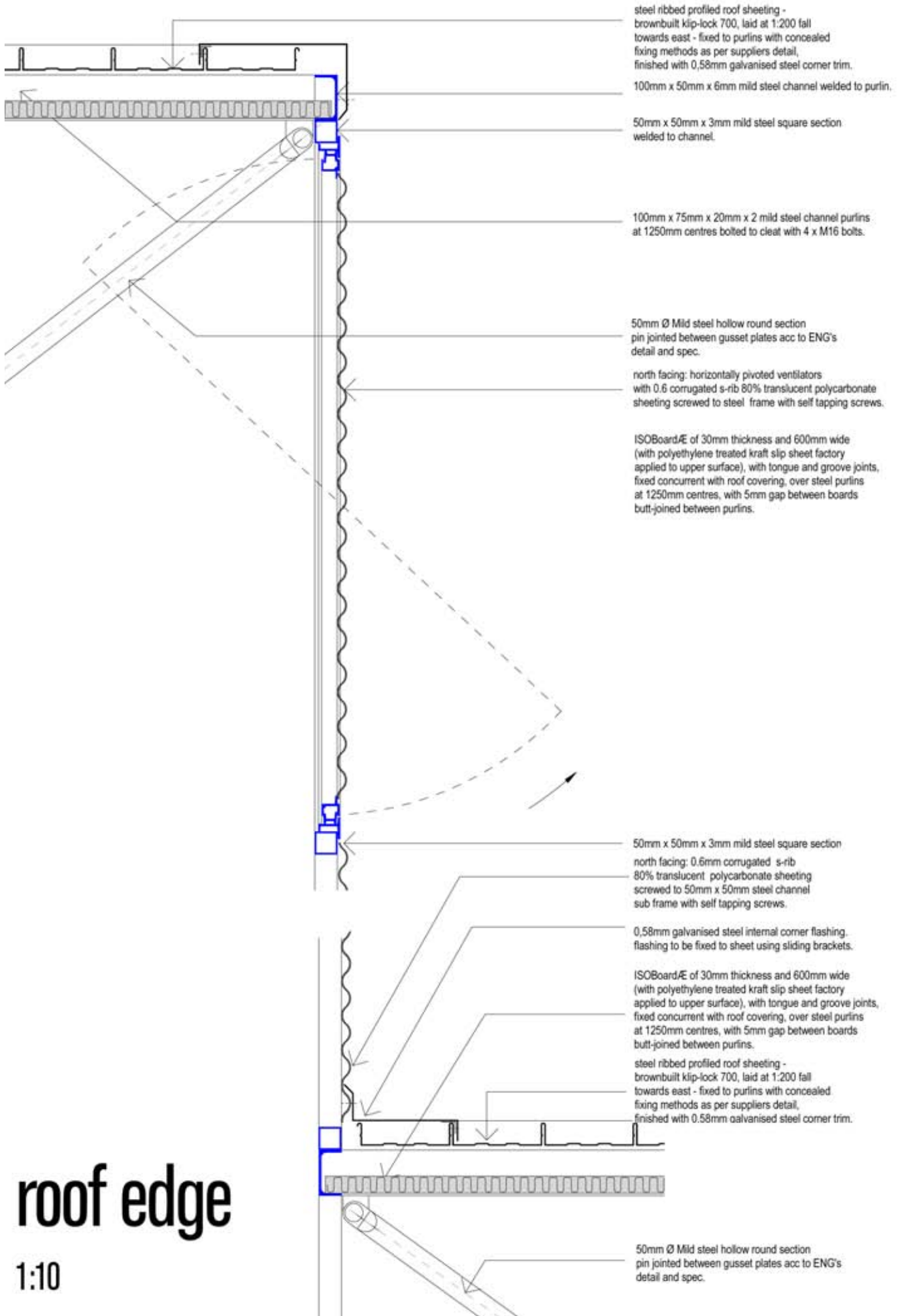
20mm x 38mm Meranti slats fixed to meranti top hung window frame.  
Plascon Glatex 8 varnish to all exterior new wood.



38mm Thick meranti counter 1190mm above sill.  
Plascon Glatex 8 varnish to all exterior new wood.

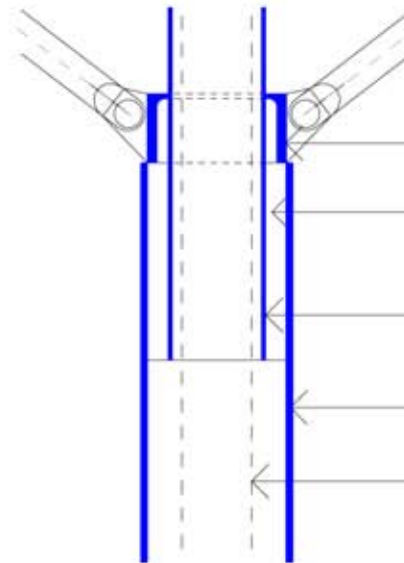
# detail b

1:20



# roof edge

1:10



200mm x 90mm x 30mm parallel flange channel chord.

150mm x 29mm thick mild steel spacers purpose made by specialist, welded to inside of steel column.

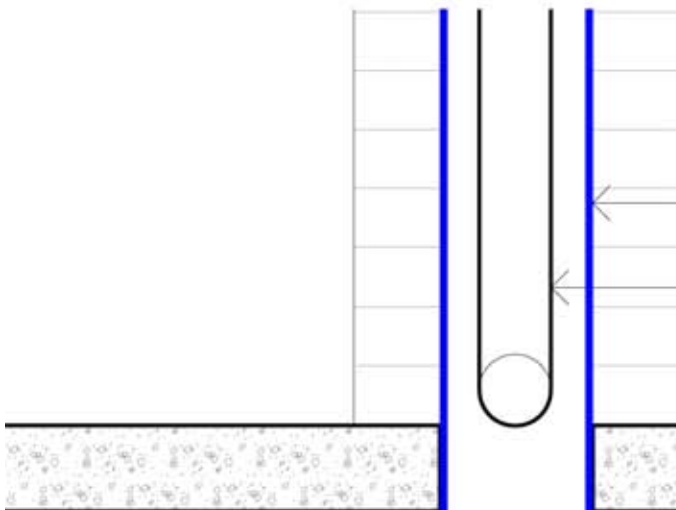
89mm Ø x 5mm steel round, web member, welded to parallel flange channel chord, secretly fixed to inside of column sleeve.

219mm Ø x 10mm steel structural column spaced 5 000mm apart.

100mm Ø HDPE down pipe concealed inside column, to sump.

# column/truss fixing

1:10



219mm Ø x 10mm steel structural column spaced 5 000mm apart.

100mm Ø HDPE down pipe concealed inside column, to sump.

125mm power floated concrete surface bed.

steel footplate

grouting

adjustable pocket

20 Ø steel holding-down bolts

concrete stub column

# column footing

1:10

# MODEL

PLAN OF HALL AND POOL

