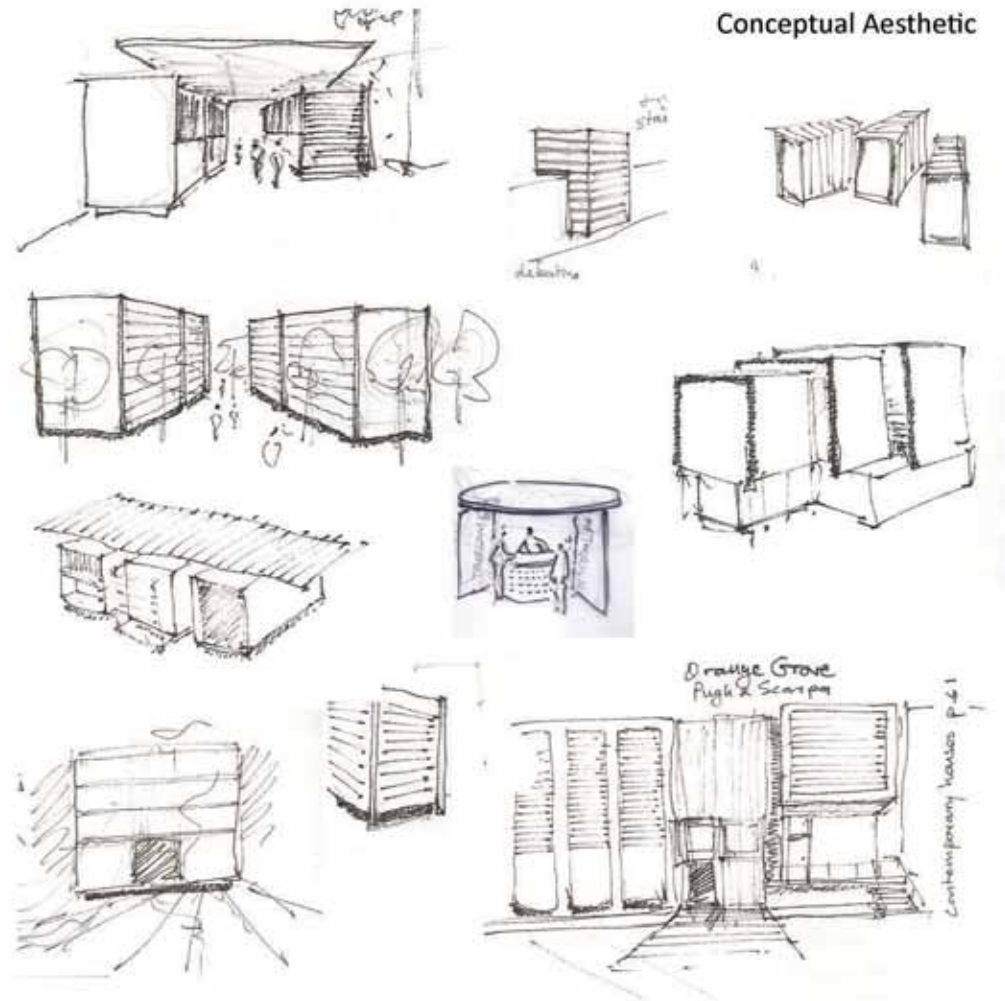









Conceptual Aesthetic



Programme Allocation

A Information Exchange	196m ²
Occupancy Class C2 - Population 40	
B Social Pub (smoking)	69m ²
Occupancy Class A1 - Population 40	
C Social Pub (non-smoking)	69m ²
Occupancy Class A1 - Population 40	
D Social Pub - Open air deck	86m ²
Occupancy Class A1 - Population 80	
E Discussion Room 1	46m ²
Occupancy Class G1 - Population 20	
F Cafeteria Kitchen	92m ²
Occupancy Class B2 - Population 15	
G Cafeteria Seating (non-smoke)	92m ²
Occupancy Class A1 - Population 80	
H Cafeteria Seating - Open air deck	104m ²
Occupancy Class A1 - Population 40	
J Open air Pavillion	78m ²
Occupancy Class A5 - Population 90	
K Radio Station	156m ²
Occupancy Class G1 - Population 13	
L PC Training / Subject Testing	40m ²
Occupancy Class A3 - Population 11	
MPC Training / Subject Testing	40m ²
Occupancy Class A3 - Population 11	
N Subject Training	173m ²
Occupancy Class A3 - Population 32	
O Discussion Room 2	46m ²
Occupancy Class G1 - Population 20	
P Discussion Room 3	23m ²
Occupancy Class G1 - Population 10	



-  Access onto exterior threshold
-  Access into building
-  Access from basement
-  Circulation space
-  Lift shaft
-  Stairs
-  Balcony
-  Ablutions - 56m² on each floor

Q Discussion Room 4	23m ²
Occupancy Class G1 - Population 10	
R Auditorium 1	104m ²
Occupancy Class A3 - Population 90	
S Auditorium 2	104m ²
Occupancy Class A3 - Population 90	
T Video Productions	156m ²
Occupancy Class G1 - Population 12	
V Subject Training	173m ²
Occupancy Class A3 - Population 32	
W Discussion Room 5	46m ²
Occupancy Class G1 - Population 20	
X Discussion Room 6	46m ²
Occupancy Class G1 - Population 20	
Y Discussion Room 7	46m ²
Occupancy Class G1 - Population 20	
Z Video Productions	39m ²
Occupancy Class G1 - Population 6	

Total Area
Total Population

AA Open Air Rooftop Balcony	357m ²
Occupancy Class A1 - Population 80	
BB Open Air Rooftop Balcony	156m ²
Occupancy Class A1 - Population 60	

Programme

Awareness

A **24 Hour Cafeteria** and **Social Pub** provides space for the public to sit and have meals together, for the sake of informal interaction between regular patrons, and in the process become aware of what is going on around them and to become involved with their 'neighbours'.

Citizens will be given the opportunity to proclaim their opinions on the **Informal Soapbox**, where they can literally reserve a wooden box on which to stand and address the public, as well as using the **Graffiti Wall**. A **Radio Station** promotes awareness among citizens of current issues on a continuous basis. **Exhibitions** in and around the building will inform the passerby of matters that might otherwise have gone unnoticed. The **Information Exchange** with hi-tech interface makes info available in paper and electronic format regarding local government issues, together with tourism and public transport information. Citizens will also be able to deposit authorized info.

Education

The **Information Exchange** will offer maps, documents, **Audio and Video Productions** and people to contact; as well as archives of all the facts and debates of the past. It will also house a scale model of Pretoria to give people a 3D view on the city's development.

Before the public can take part in the rest of the process, they will be subjected to an education procedure, to avoid time wasted by uninformed participants.



Social Pub



Radio Station



Exhibitions

Initial Voter Registration will ensure, through a testing procedure, that people are on the same page when beginning their journey as voters. They would thus first have to go through a training process, as access to information requires a basic level of literacy. In order to increase accessibility, **English Language Training** and **IT Training** will be made available to citizens. The **Body Language Training** and **Cultural Education** will also be necessitated to increase understanding among those taking part in debates.

Thereafter the more specific **Subject Education** is paramount, as it is aimed at informing participants of the specific matter under discussion.

Debate

in the beginning phases everyone will be encouraged to comment, using the newspaper columns, **Informal Soapbox**, **Internet Blogging** and **Radio Station** phone-in programs. Once the debate has gathered momentum though, the public will choose which advocates' informed proposals will be heard via the **Formal Soapbox**, **Information Exchange**, **Radio Station**, (played on all public transport) and official **Internet Website** with **Blogging** and **Webcasting**, as well as regular columns in newspapers.

For more locality specific matters, **Discussion Rooms** enable concerned parties to voice their opinions through the help of trained and well-informed facilitators. The use of audio-video technologies will aid participants to have meaningful sessions.



Formal Soapbox - Pavilion and Auditorium



Subject education



Discussion Rooms

Conclusion

As the allocated time for debates draw to a close, all the different opinions will be assimilated. Through a process of systematic reduction, the agreements and disagreements regarding the issues are identified and the public will be offered clear consolidated options from which to choose the way forward. These options will be made known through the use of the **Radio Station**, **Information Exchange**, **Exhibitions**, newspaper columns, and the official **Internet Website**.

Decision

Subject Voter Registration ensure that only those who are informed on the matter may take part in the decisionmaking. This will be done through a testing procedure. A hi-tech platform provide the basis for regular voting through **SMS** and **Internet Referendums**. Voting results will be made available through the **Radio Station**, **Information Exchange**, **Exhibitions**, newspaper columns, and the official **Internet Website**.

Enforcement

The citizens need to monitor whether public servants are executing their wishes and will thus be kept up to date on the implementation of their decisions through the use of the above mentioned media. An **Accountability Forum** will be held for public servants who fail to implement policies. These sessions will be open to the general public and decisions made will bear the necessary authority.



Information Exchange



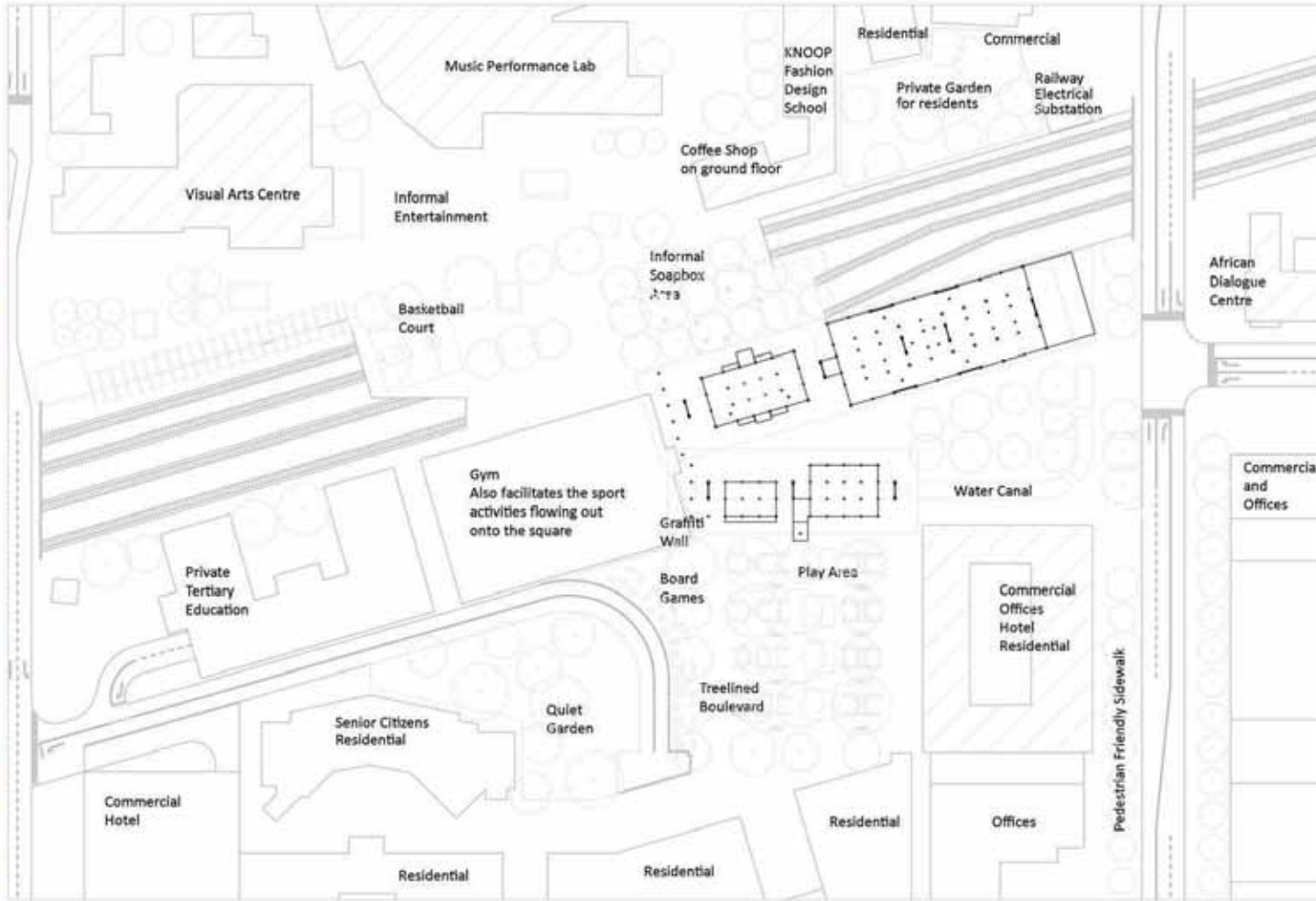
Accountability Forum



Information Exchange

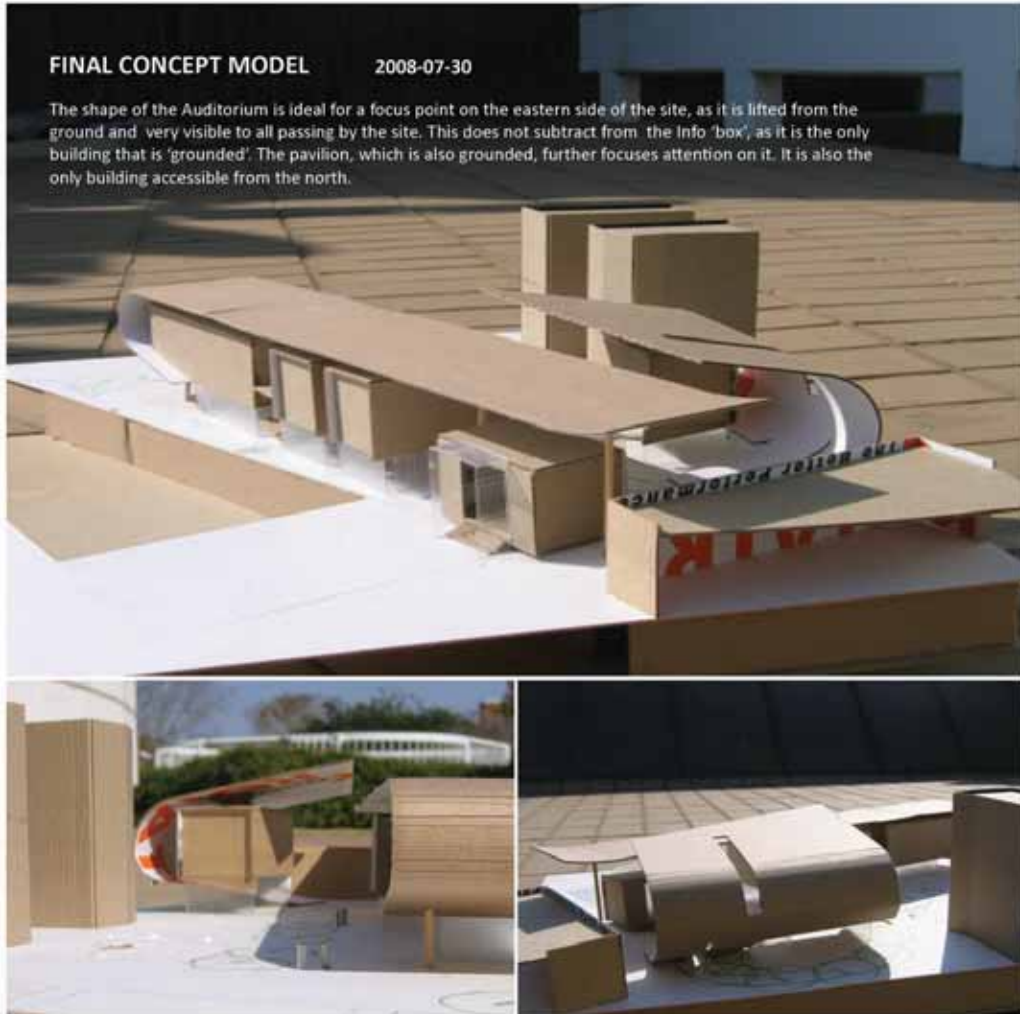
Proposed Context Development

1:1000



FINAL CONCEPT MODEL 2008-07-30

The shape of the Auditorium is ideal for a focus point on the eastern side of the site, as it is lifted from the ground and very visible to all passing by the site. This does not subtract from the Info 'box', as it is the only building that is 'grounded'. The pavilion, which is also grounded, further focuses attention on it. It is also the only building accessible from the north.



**DESIGN
RESOLUTION
PART D**



Negative

At this stage the design actually reflected the problem statement of the dissertation, instead of addressing it. Even though the programme consisted of diverse functions, it had to function as a whole. The two main buildings failed to 'communicate' with each other.

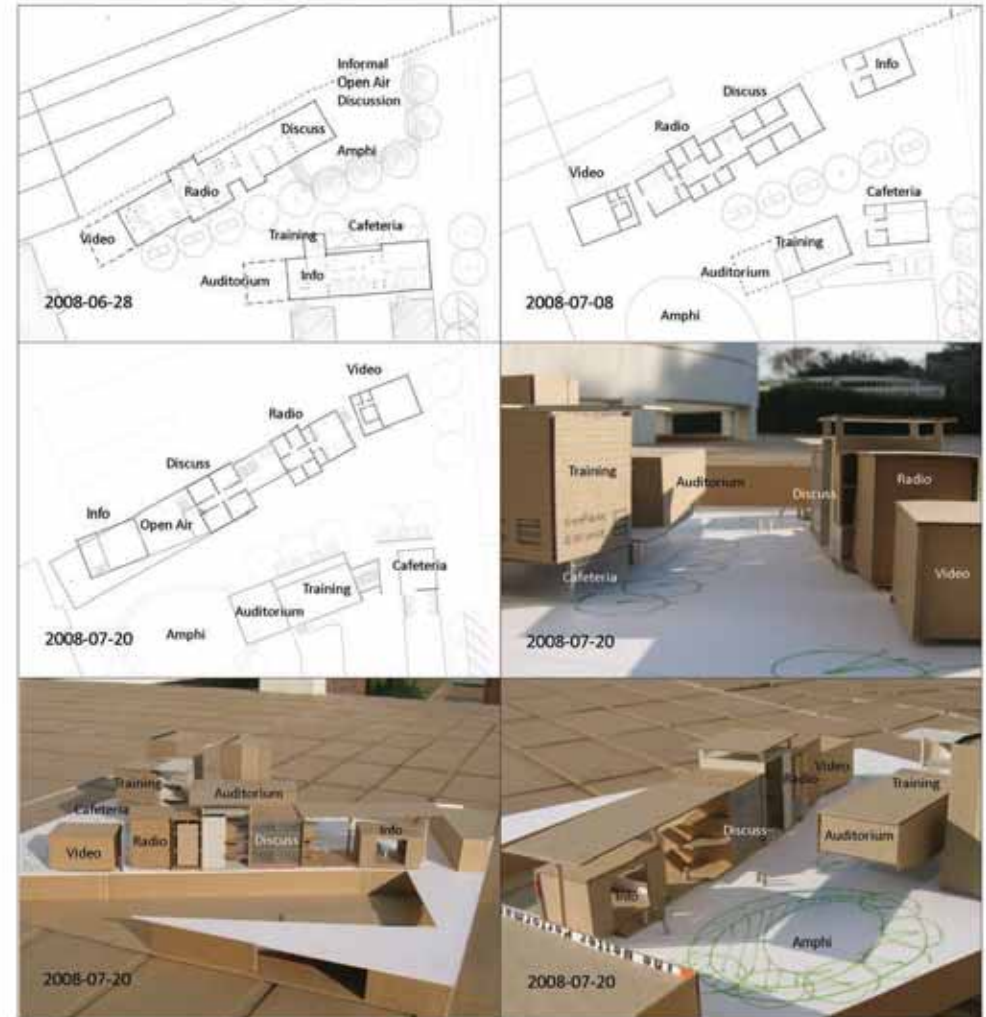
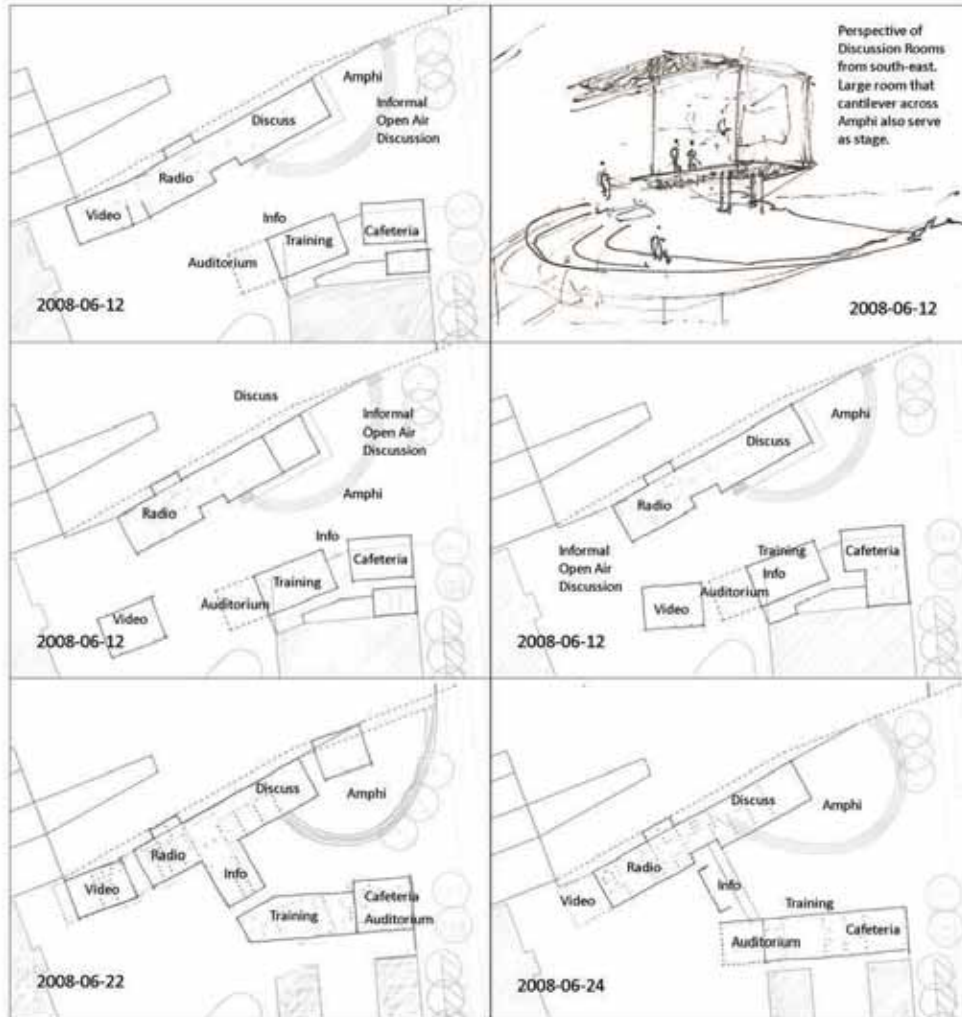
The complex on the northern side (along rail track) was too 'busy' and incoherent, destroying the legibility. The building is approached from three sides, requiring multiple access points, none of which should be 'monumental'. Yet it required a focus point, which was lacking.

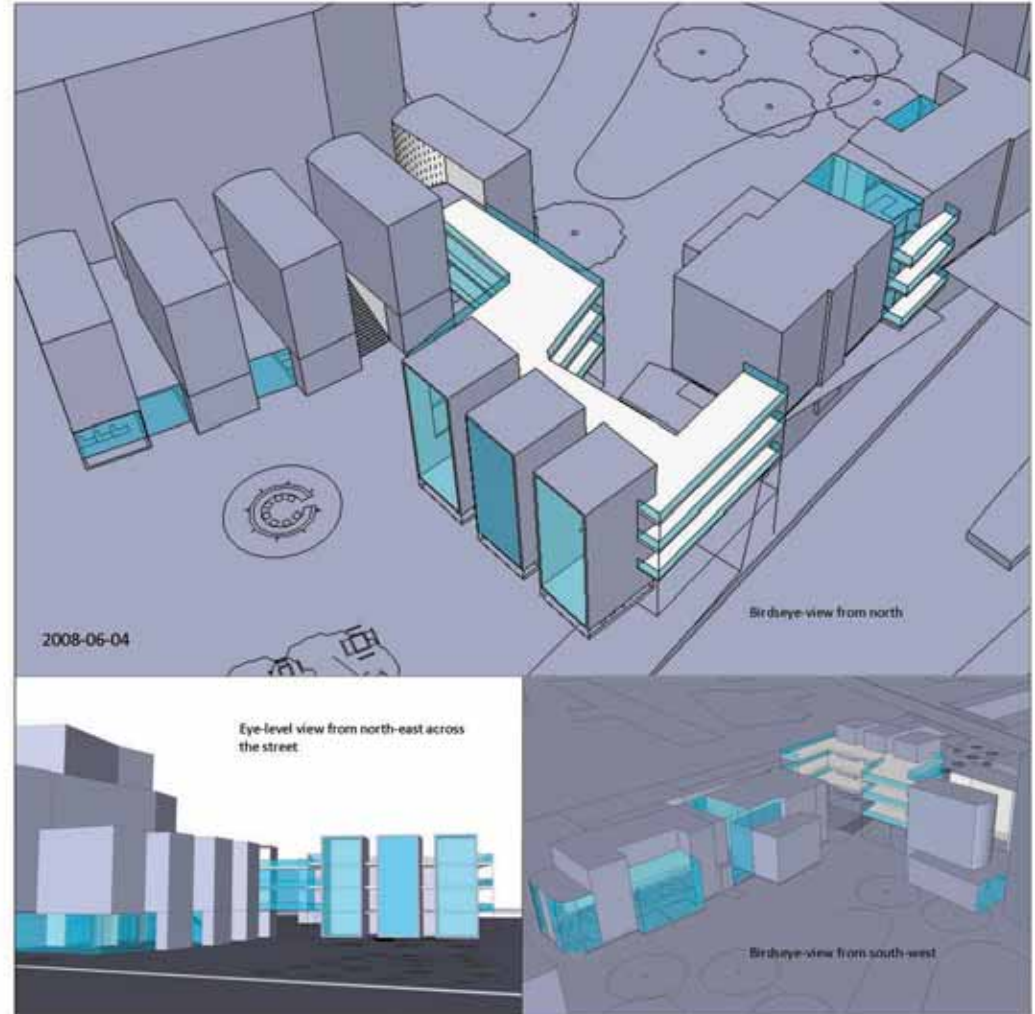
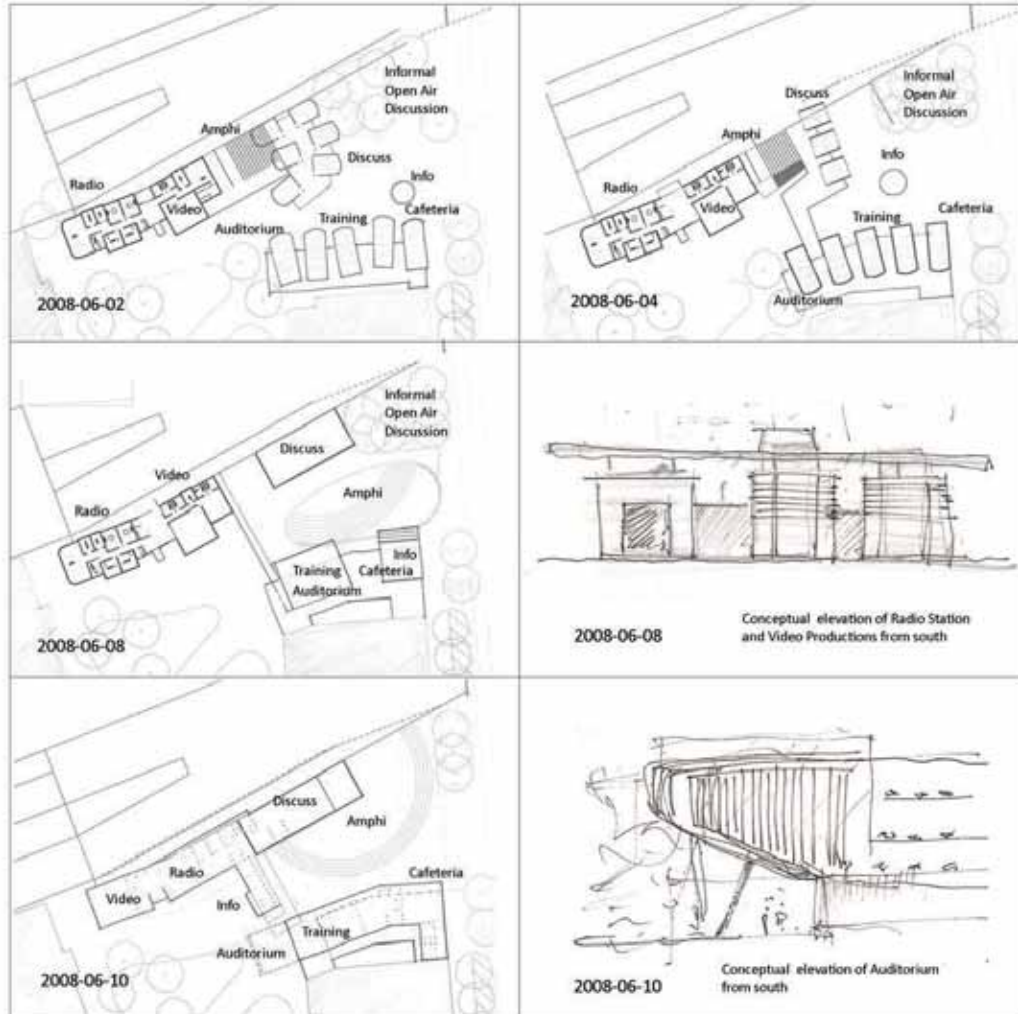
Positive

There existed two possibilities for a focus point, namely the Auditorium and the Info 'box'. I realised that the Info 'box' was positioned at the exact spot identified in the site analysis as the focus point of the site. Furthermore its programme required it to be the point of contact for the first-time visitor.

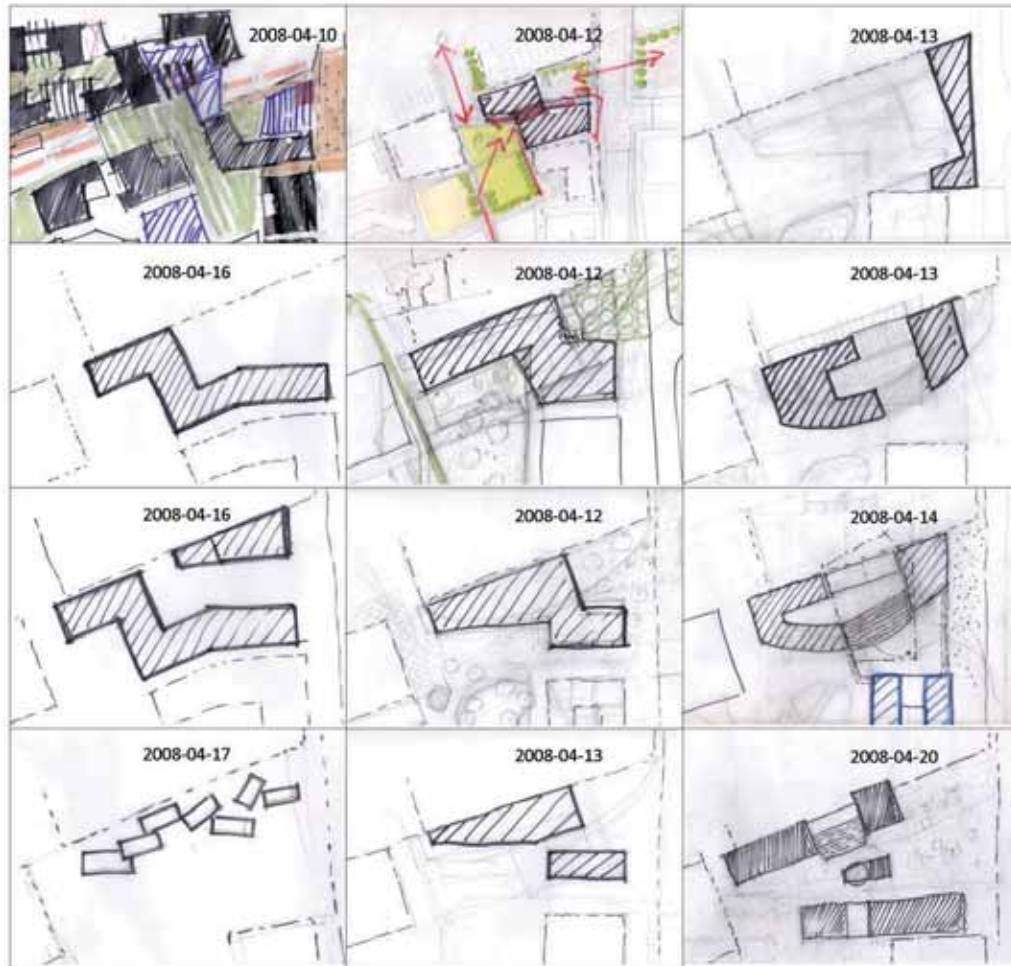
The buildings had to be separate to indicate the different programmes and to keep the scale approachable. However, it needed to share the same 'language' and be unified 'under one roof'.



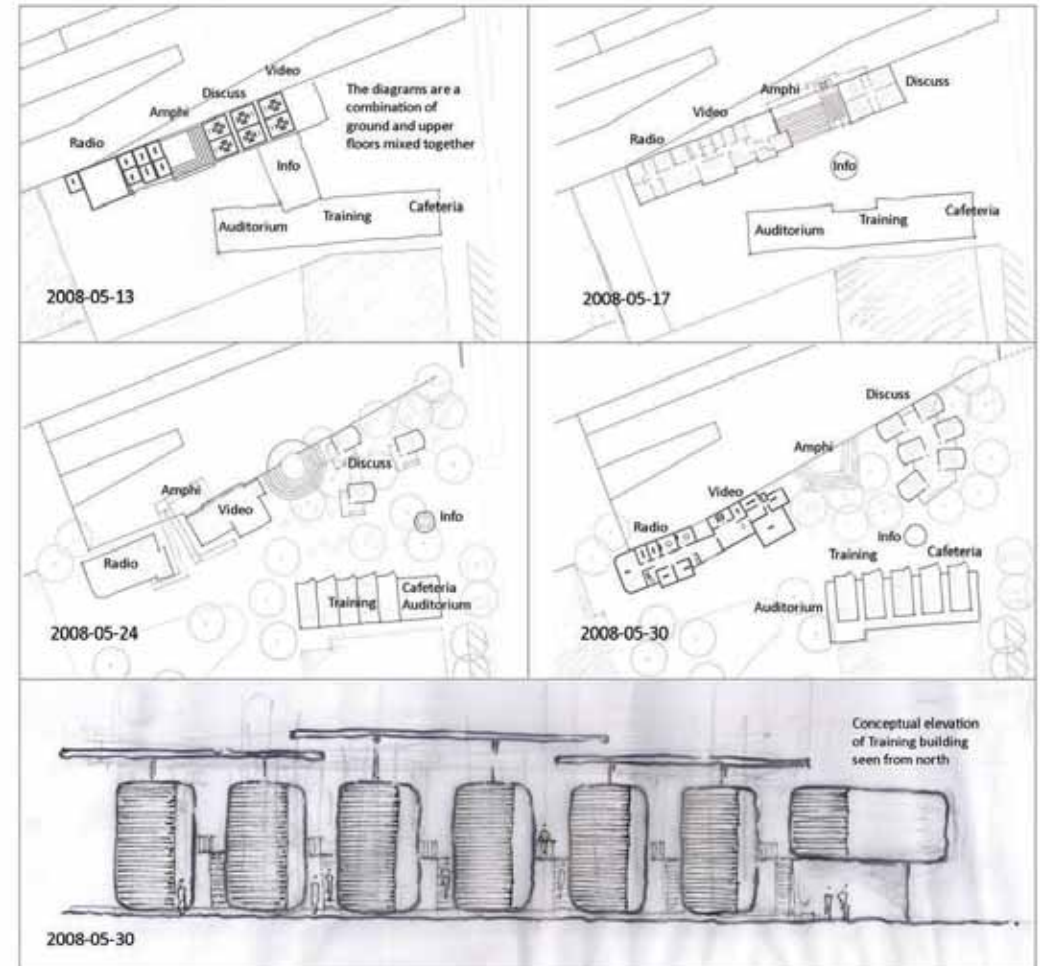




Building Footprint Development in order to define the exterior spaces



Building Volume Development after programme determination

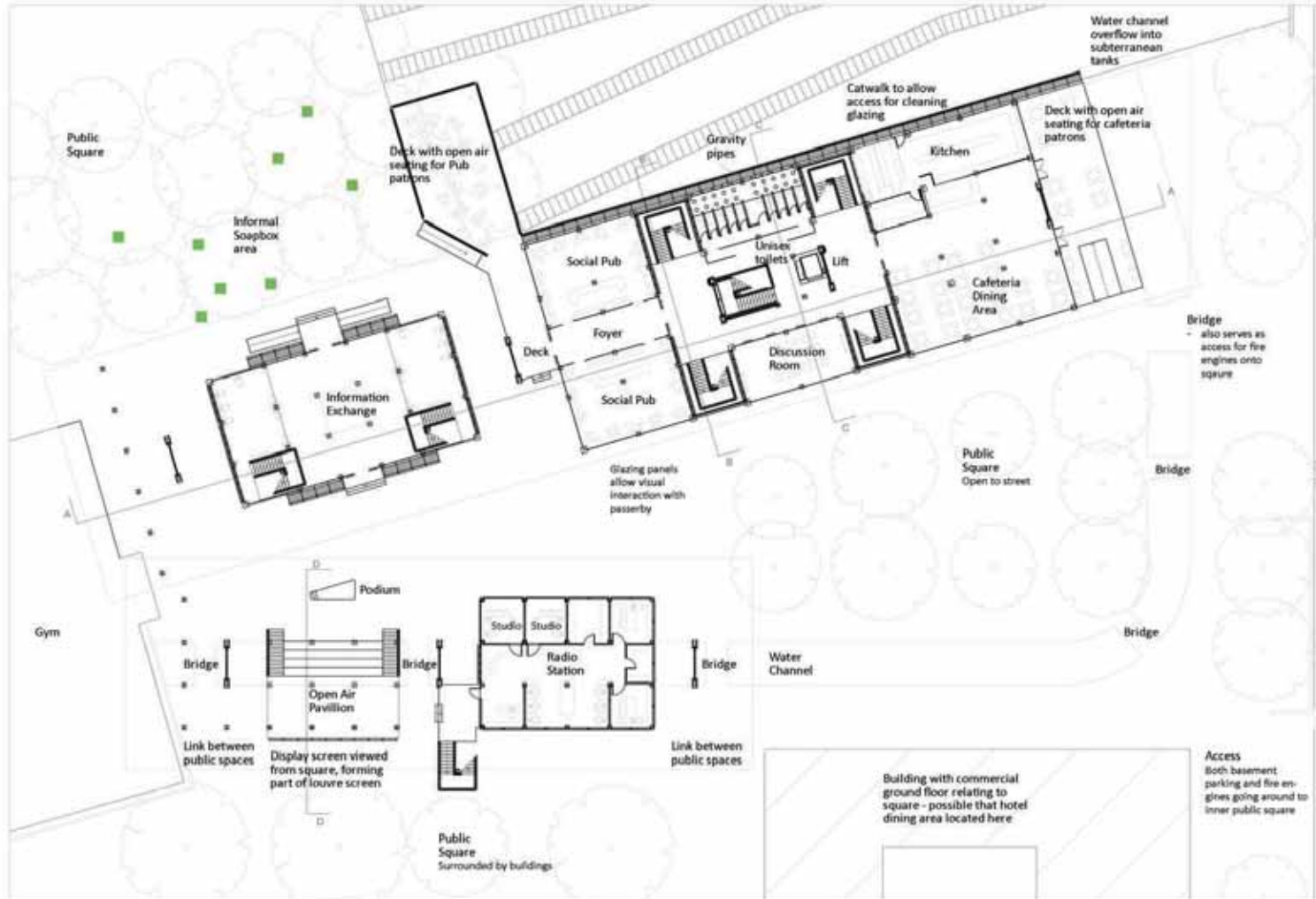


Plan - Ground Floor 1:400

For a civic building that encourages user interaction, it is essential that the building is legible, especially to the first time user. This does not mean that you grasp all of it in one take, but rather as you progress it just makes sense.

The focus point of the building is the Information Exchange, from where the public will be introduced to the programme and the rest of the facilities. It is placed where the different routes crossing the site converges. From all three directions it is hidden from plain view by the trees, and from the east and south the visitor first experiences other parts of the building before arriving there. These approaches are designed in such a way as to suggest that there is something more just a bit further. The curious nature of people are normally strong enough to pique their interest.

This 'crossroad' is designed to give the person, using it as a thoroughfare, a number of different options. This process builds a strong picture of the building into the user's mind. As with any kind of marketing, the stronger the picture, the better the recollection thereof.



The different activities on the ground floor has a somewhat odd combination, to evoke a 'double take' on a meeting held next to a pub. And being able to wave to the DJ on the radio as you walk past, puts a new 'spin' on interactive radio. Normally pavillions are deserted during the week, but here you have the opportunity to have your lunch 'samies', while enjoying the 'big event' of people walking past.

The Information exchange will have specialists assisting people to find what they are looking for on the system, which will be linked with all of the local government departments - making this their first point of contact, before being re-routed to the correct person. The staff does not have desks behind which they sit, but are rather encouraged to move around. There will be a scale model of the whole of Pretoria in the center of the double volume space.

