

A Cultural Centre for the Foreign Community, Hillbrow

First Floor Plan



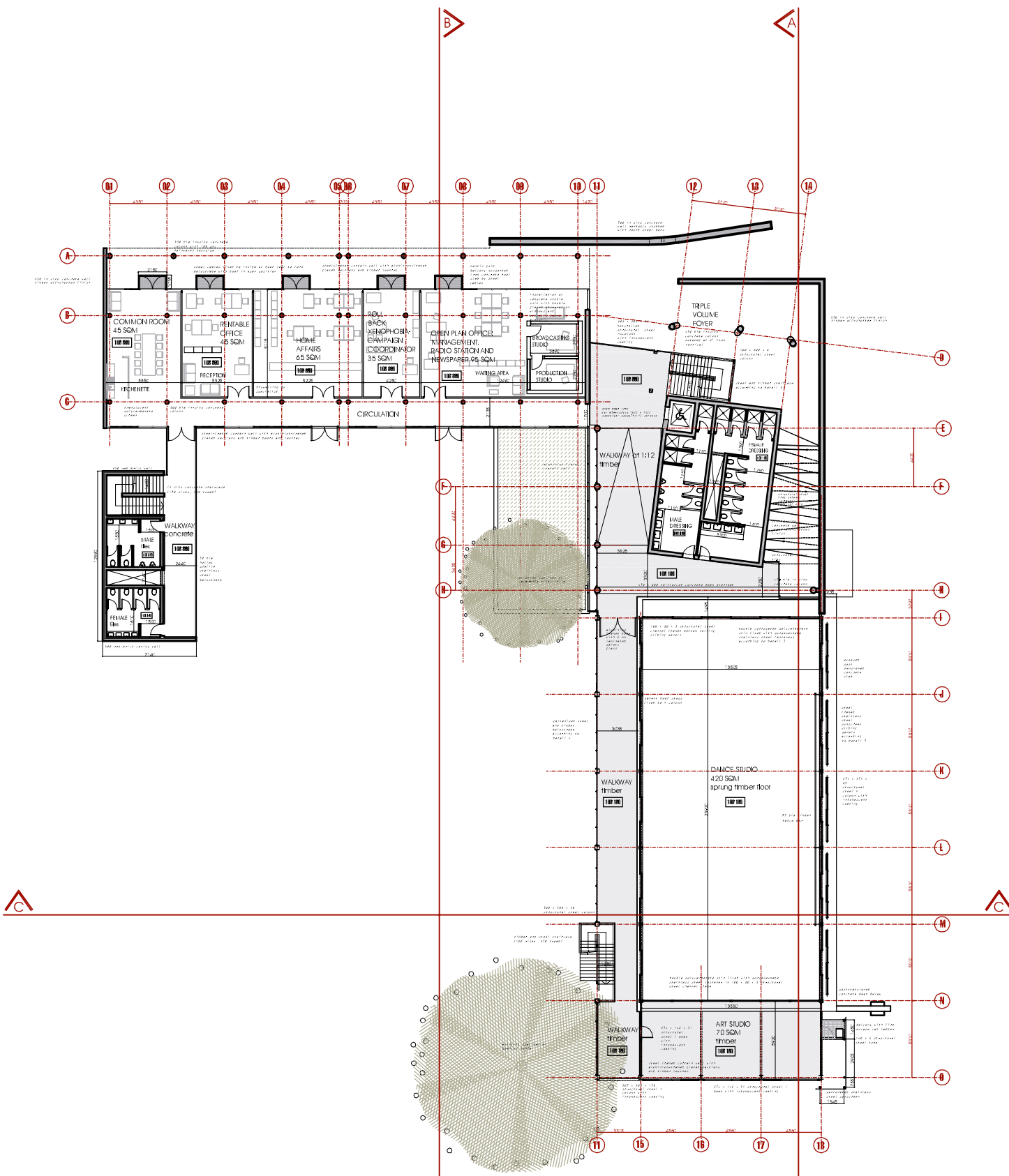
Scale 1:400

Drawing 2/9

2004_11_25

Sheet 2/9

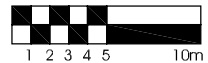


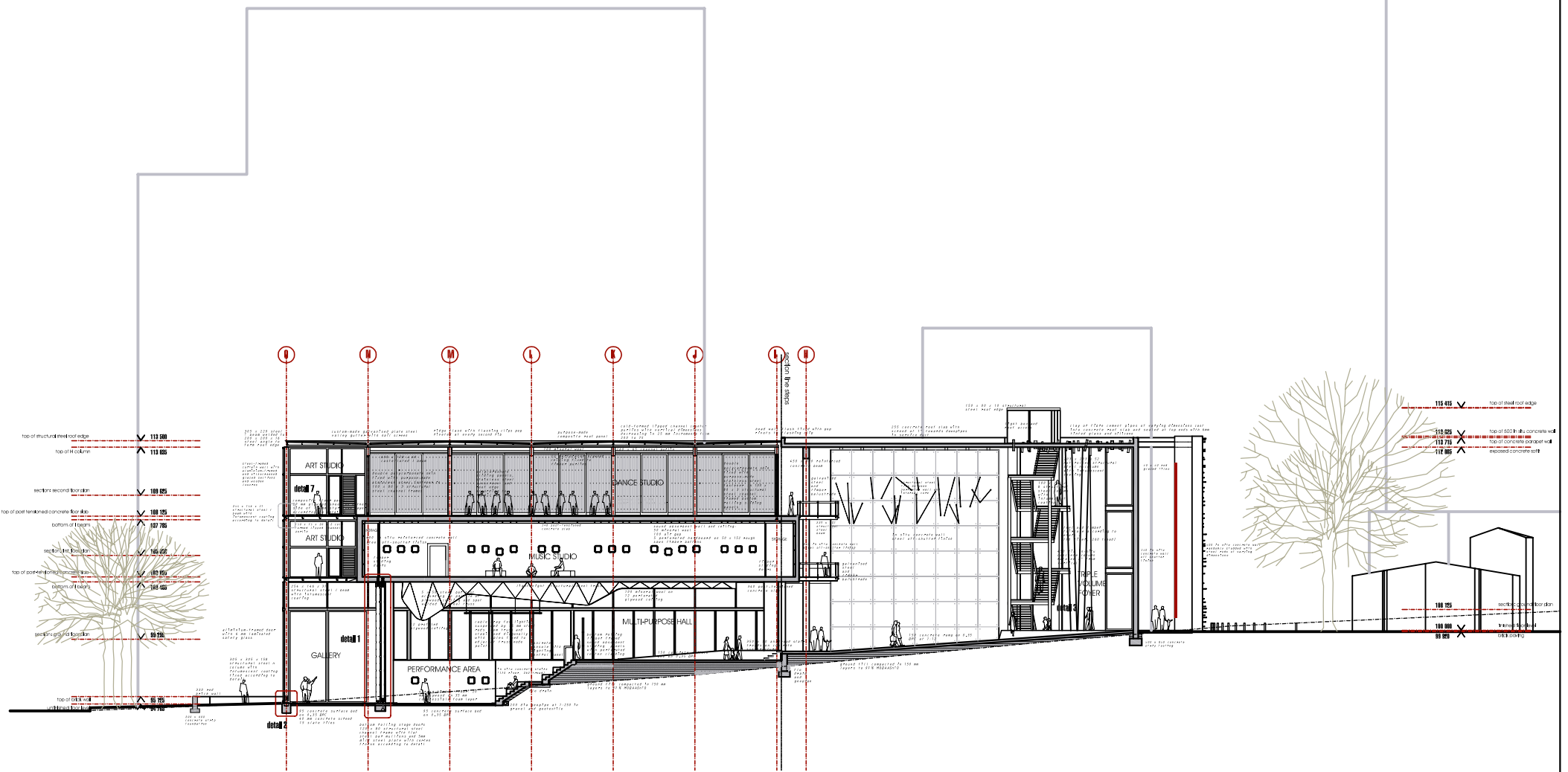


A Cultural Centre for the Foreign Community, Hillbrow

Second Floor Plan

Scale 1:400	Drawing 3/9
2004_11_25	Sheet 3/9





A Cultural Centre for the Foreign Community, Hillbrow

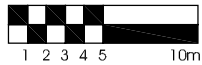
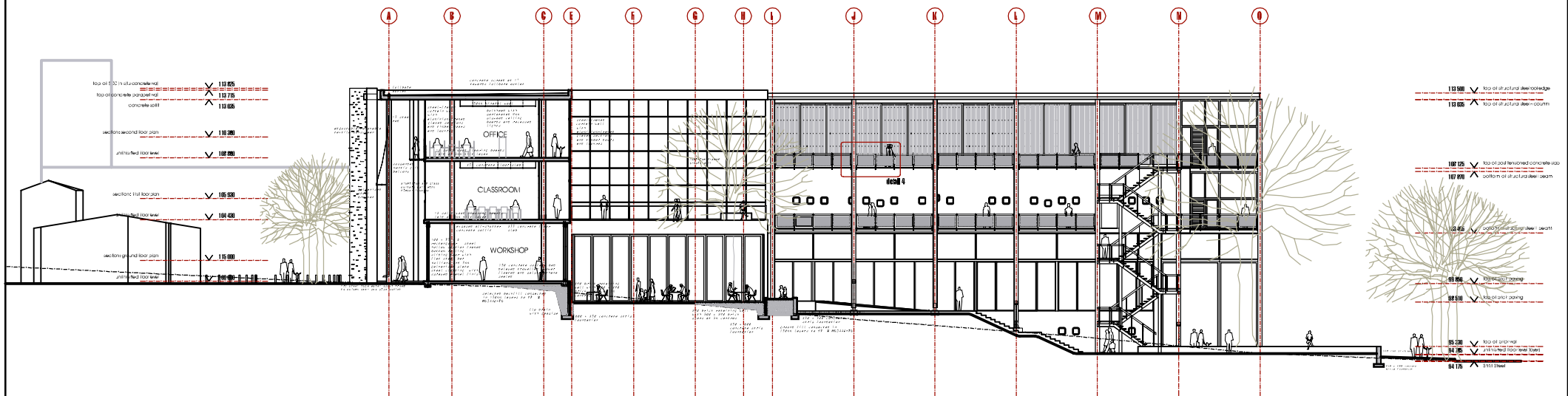
Section A

Scale 1:400

Drawing 7/9

2004_11_25

Sheet 7/9



A Cultural Centre for the Foreign Community, Hillbrow

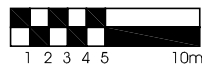
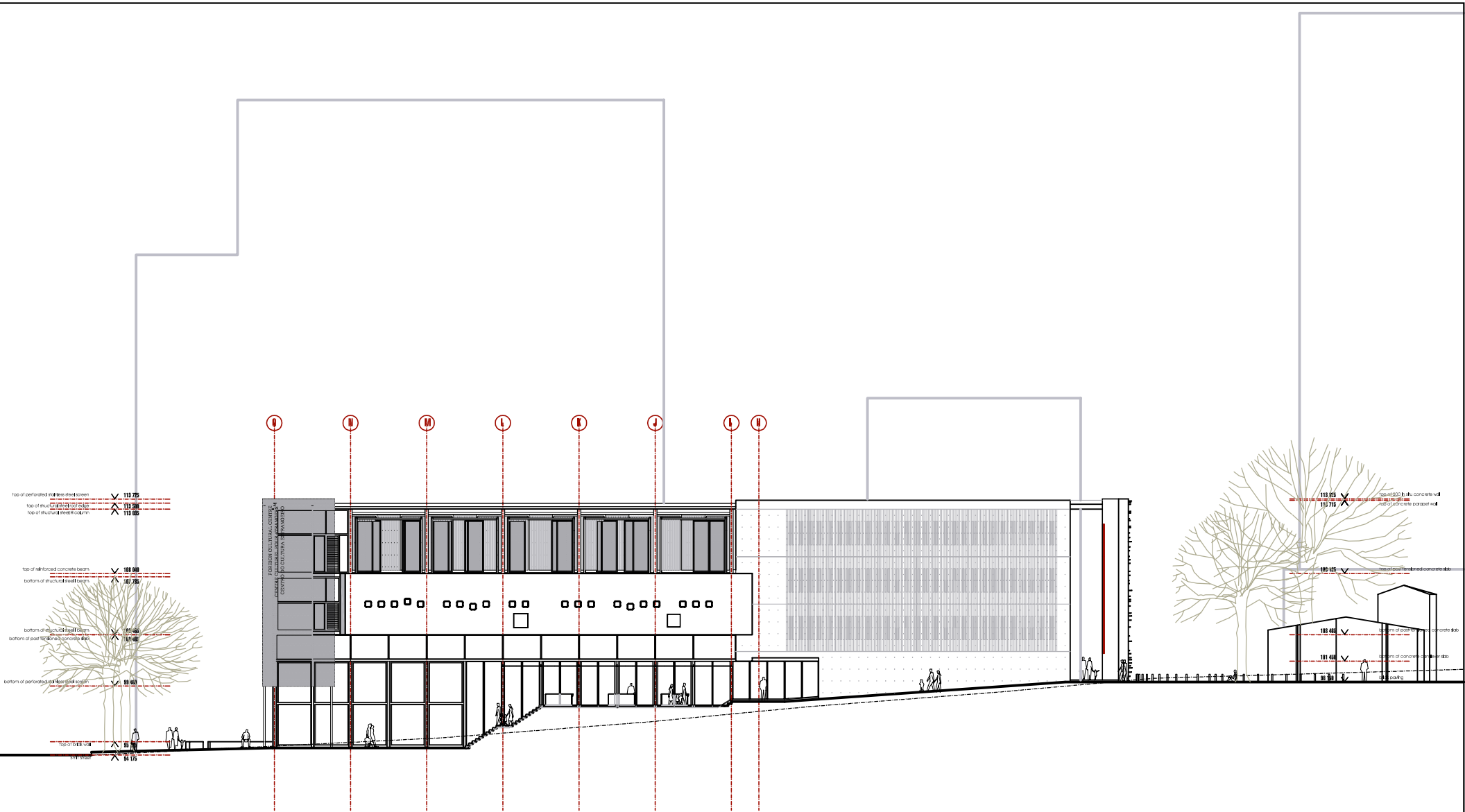
Section B

Scale 1:400

Drawing 8/9

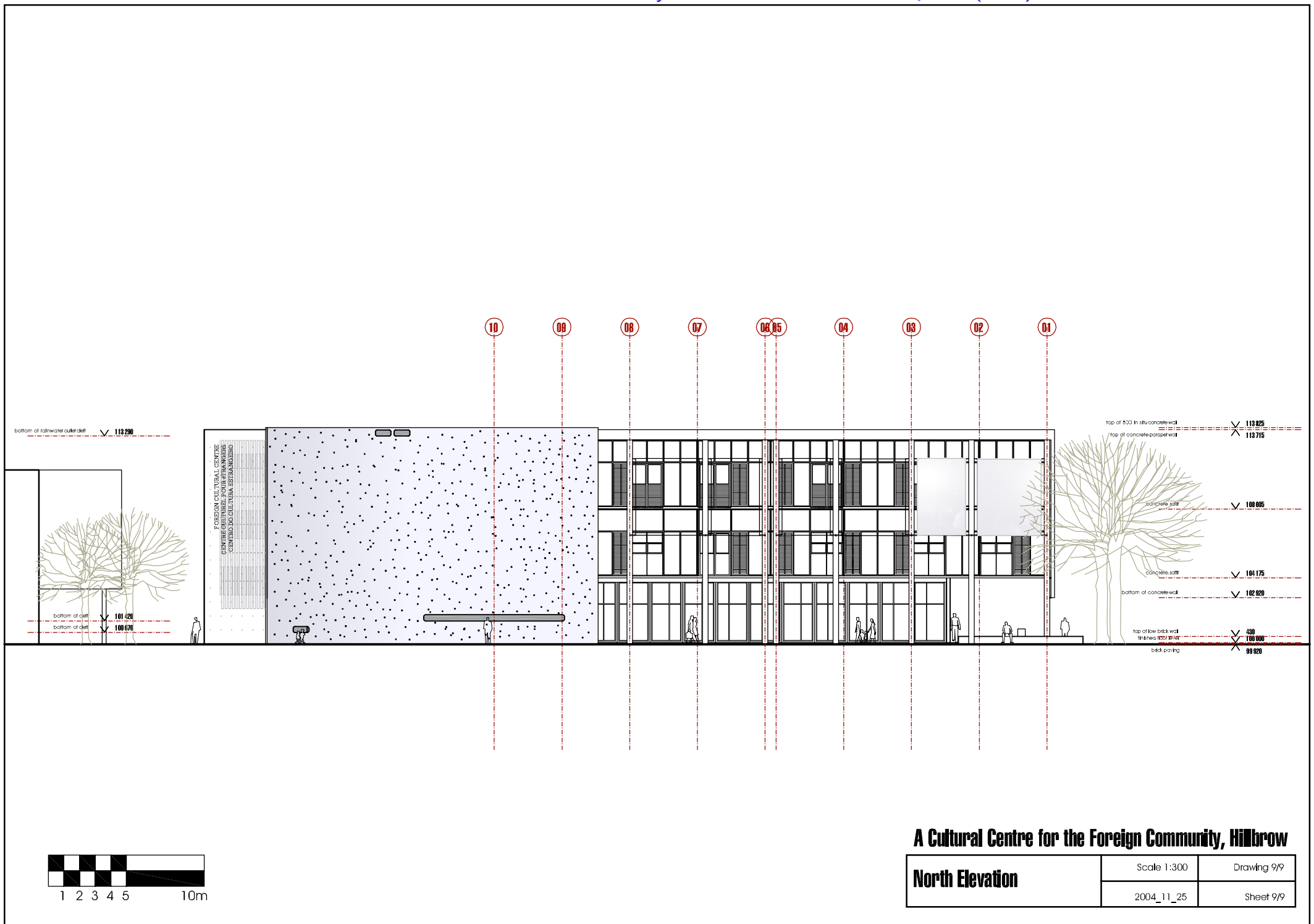
2004_11_25

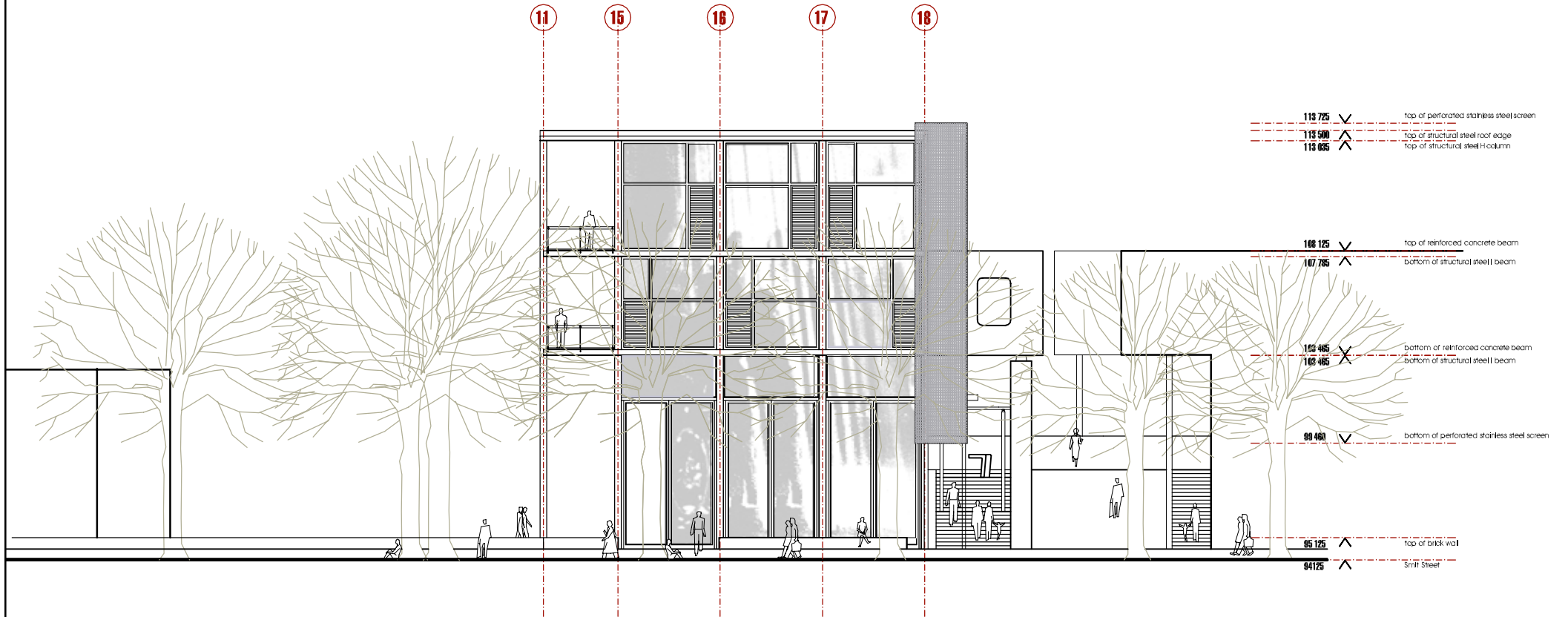
Sheet 8/9



A Cultural Centre for the Foreign Community, Hillbrow

East Elevation	Scale 1:400	Drawing 6/9
	2004_11_25	Sheet 6/9





A Cultural Centre for the Foreign Community, Hillbrow

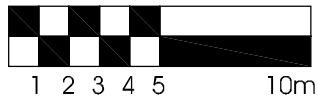
South Elevation

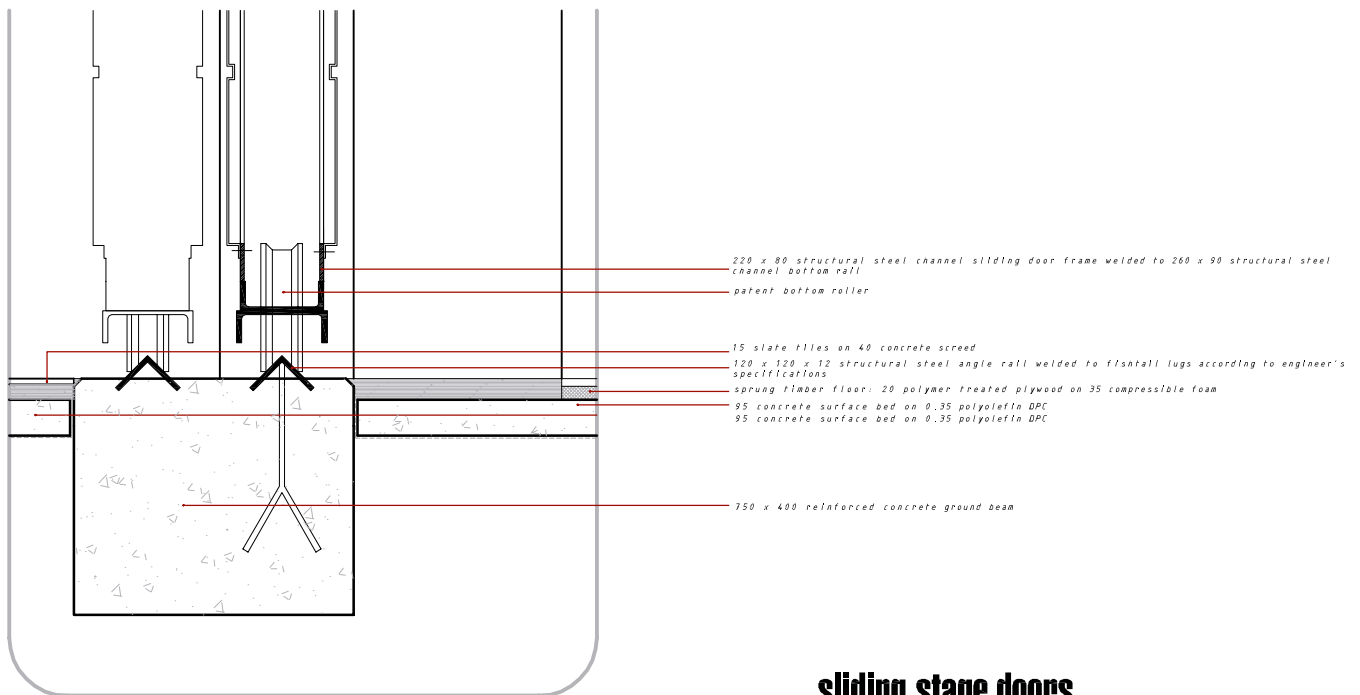
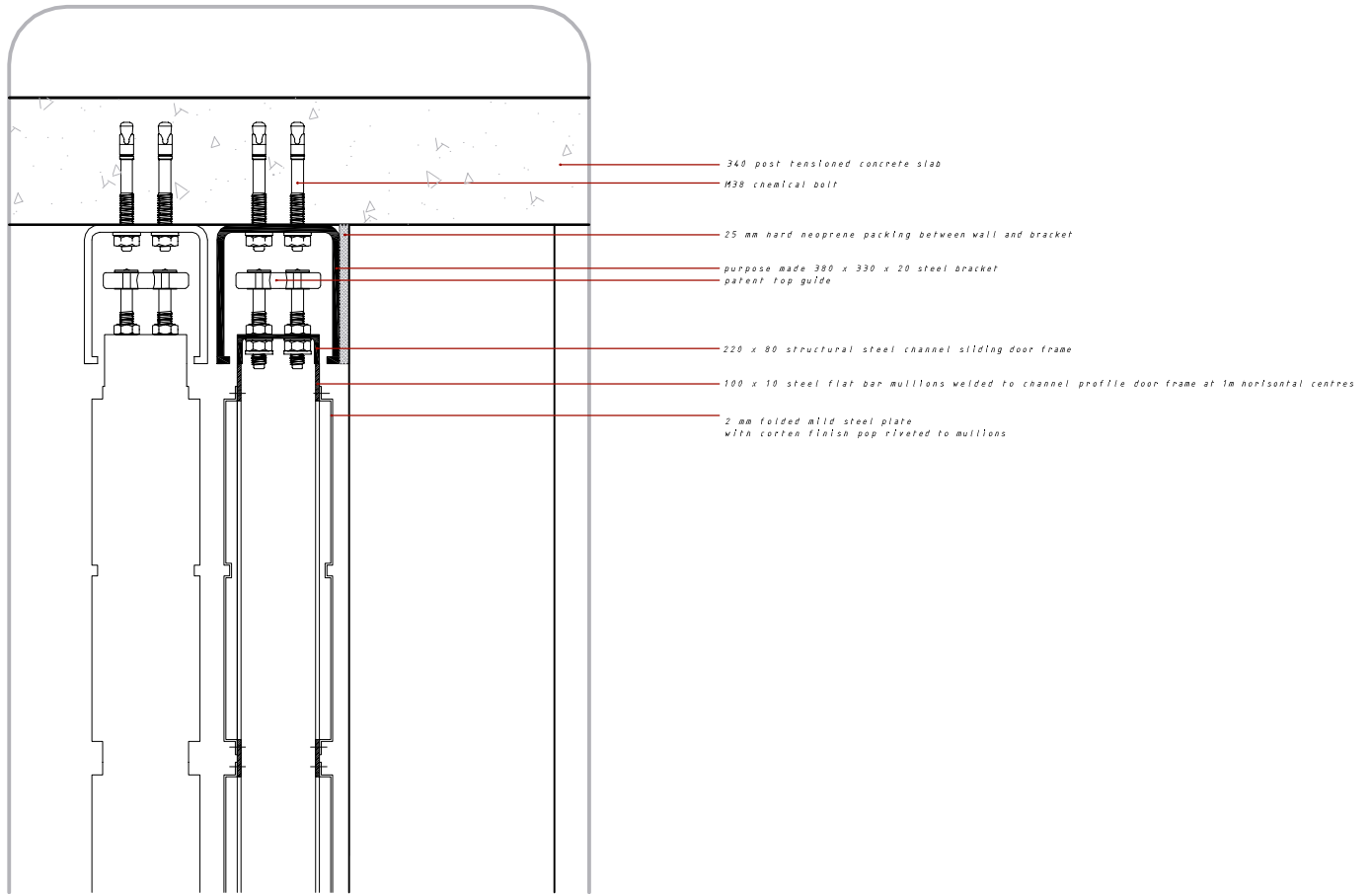
Scale 1:250

Drawing 5/9

2004_11_25

Sheet 5/9



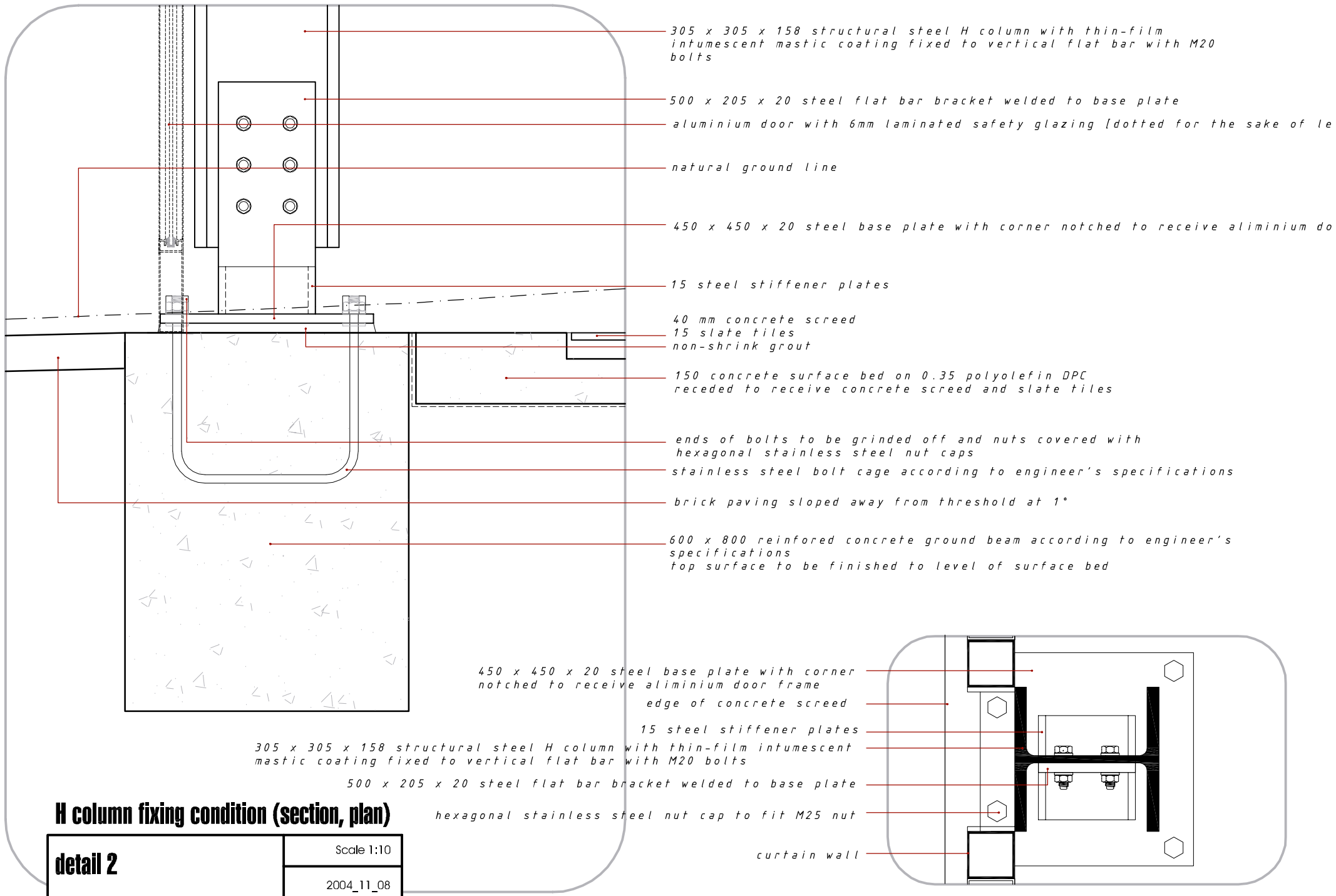


sliding stage doors

detail 1

Scale 1:20

2004_11_08

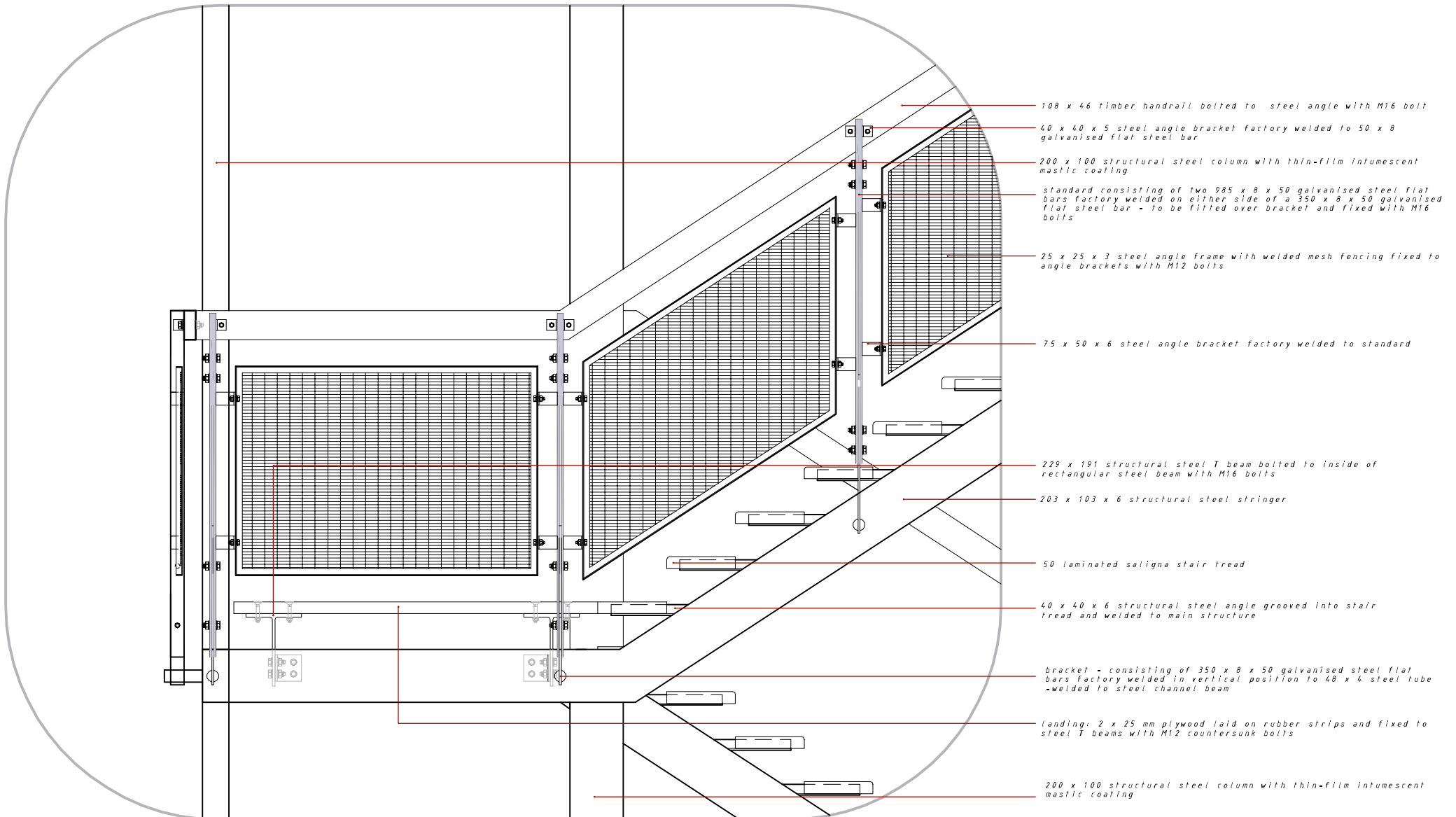


H column fixing condition (section, plan)

detail 2

Scale 1:10

2004_11_08

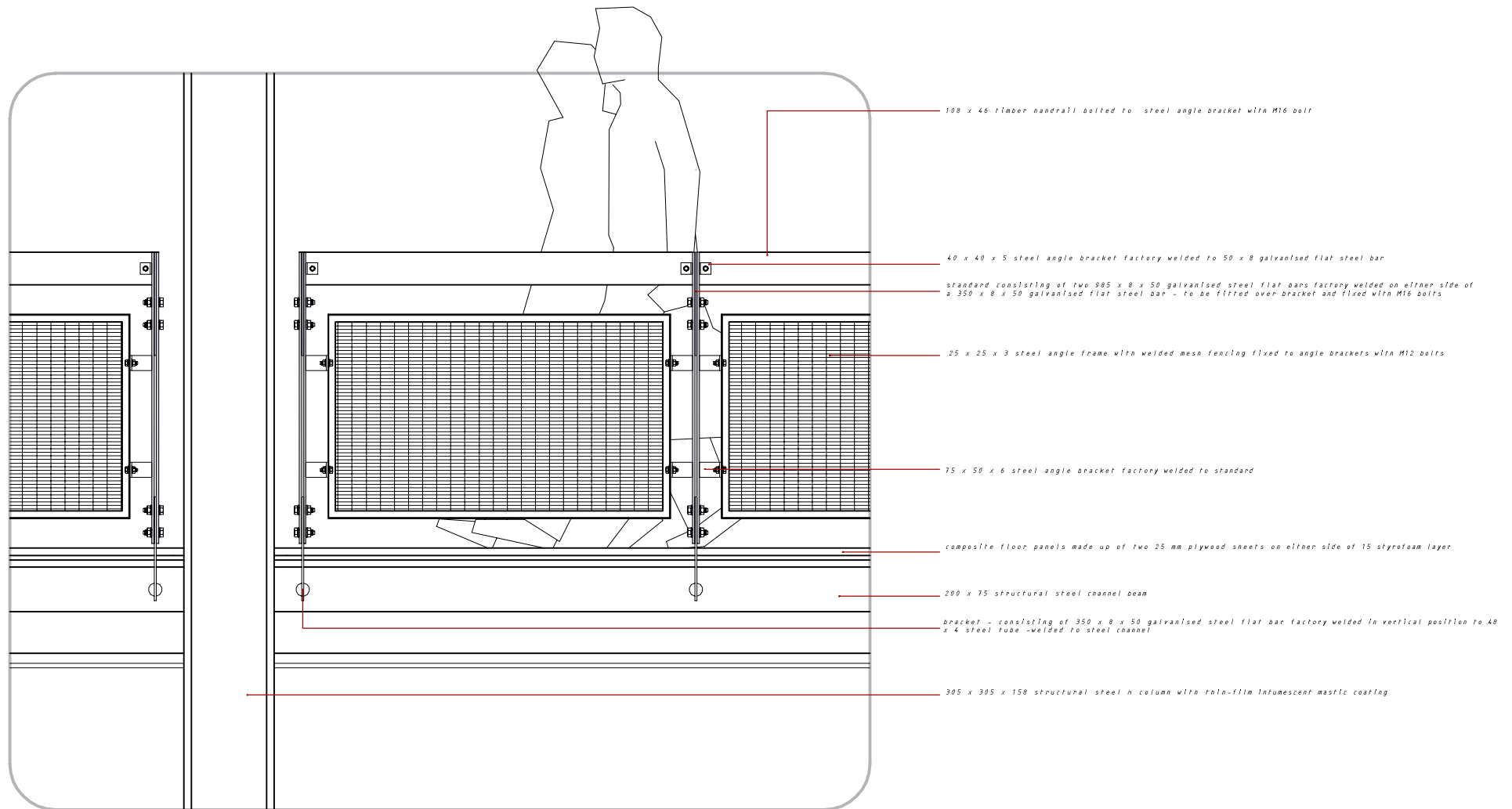


steel and timber staircase

detail 3

Scale 1:20

2004_11_08

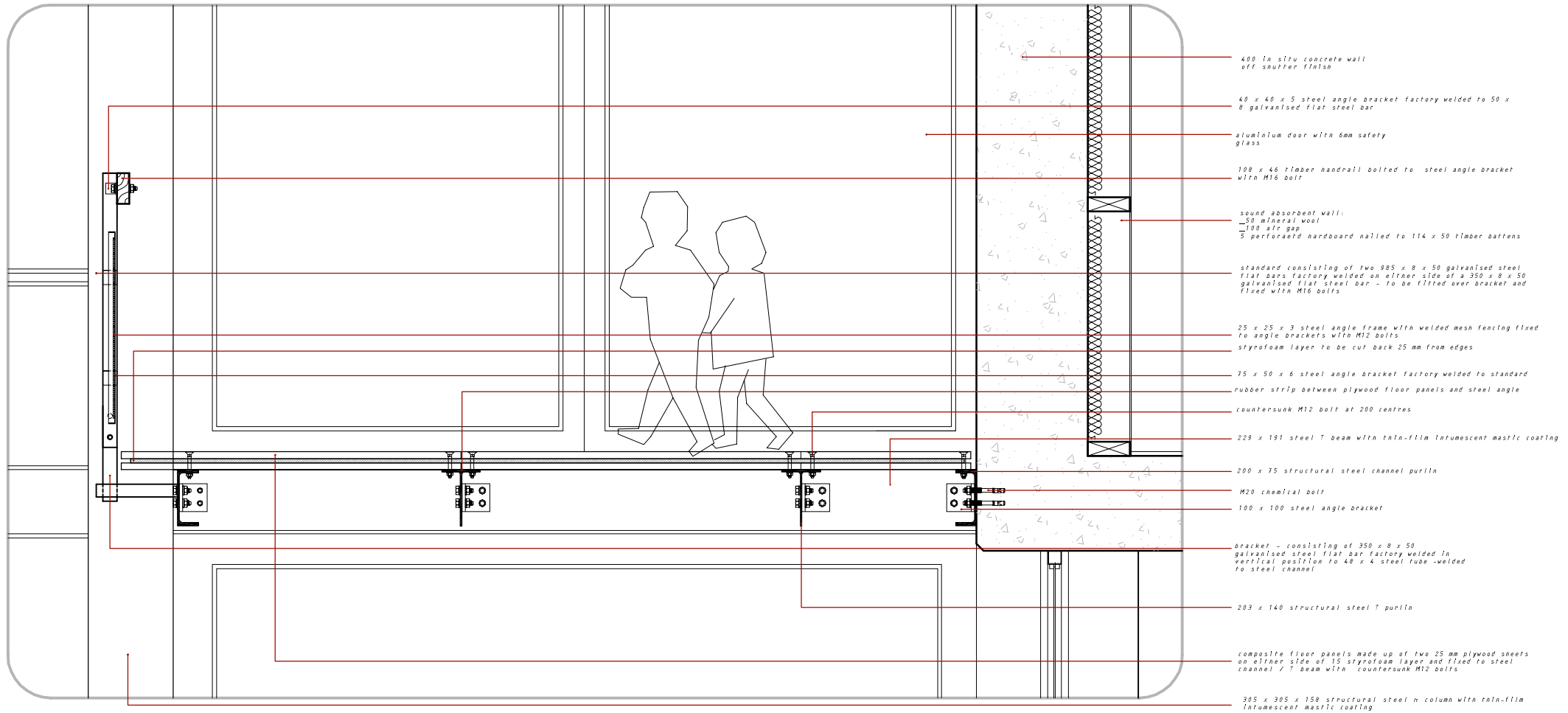


timber walkways and balustrade

detail 4

Scale 1:20

2004_11_08

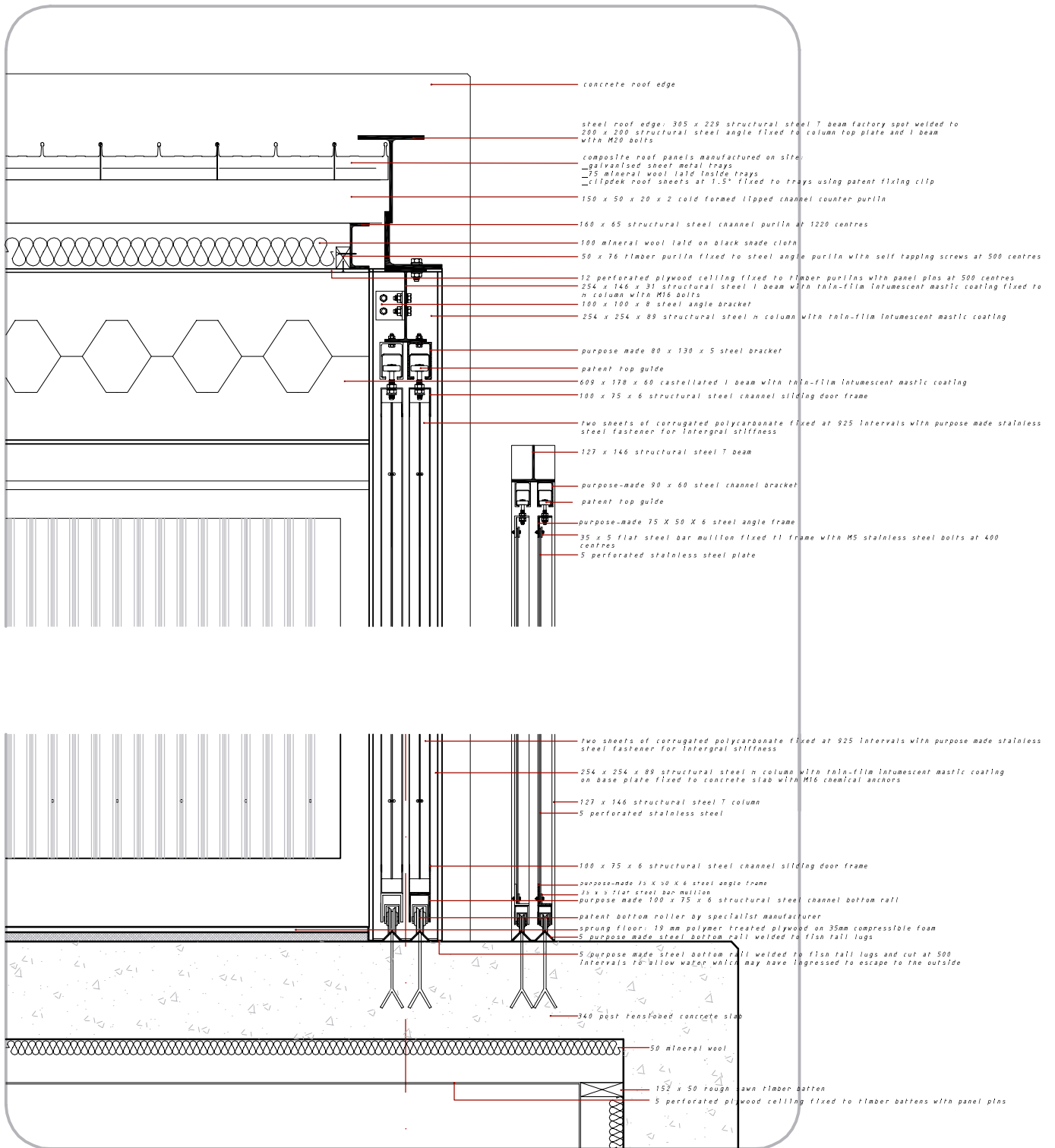


timber walkways and balustrade

detail 4

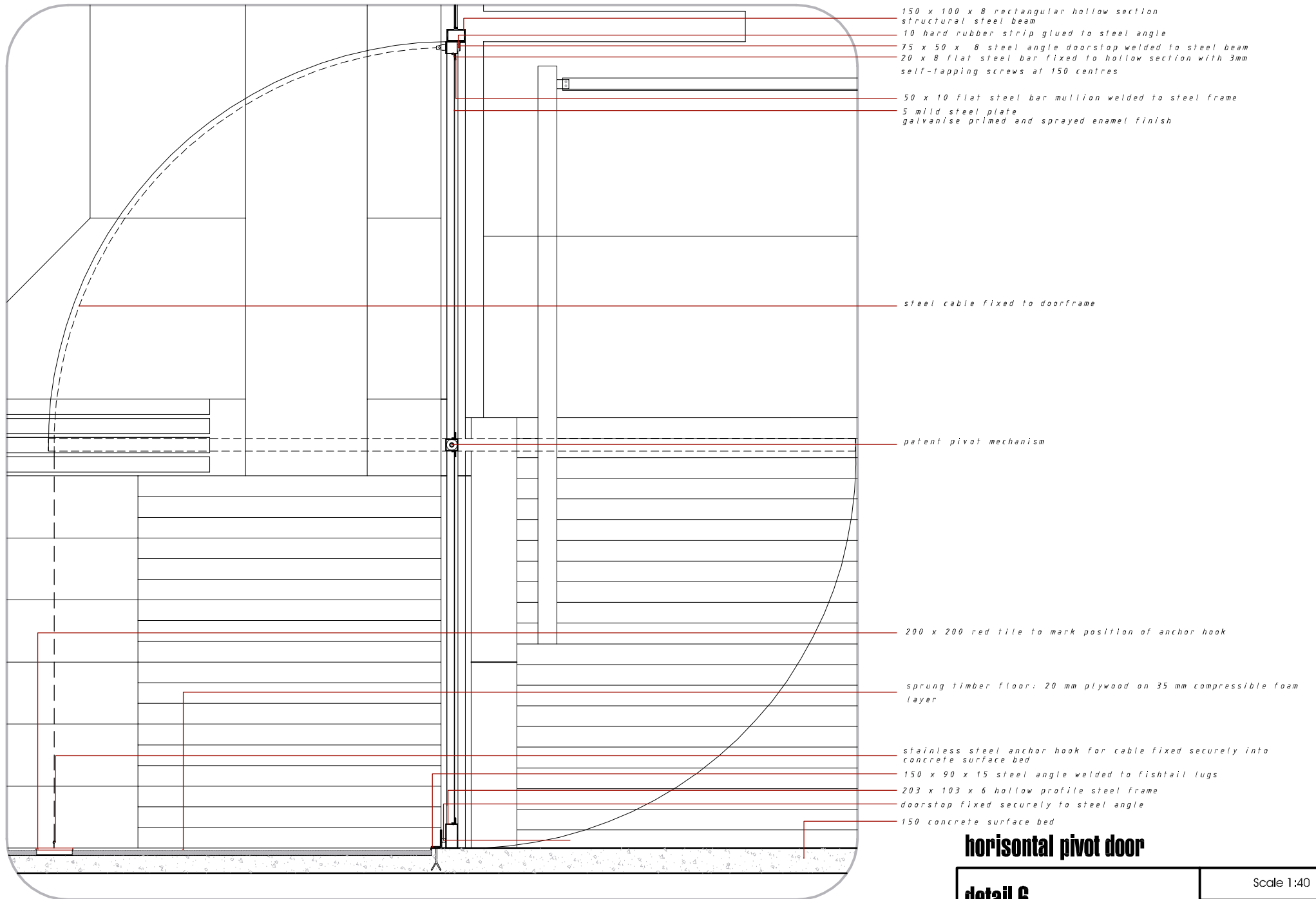
Scale 1:20

2004_11_08



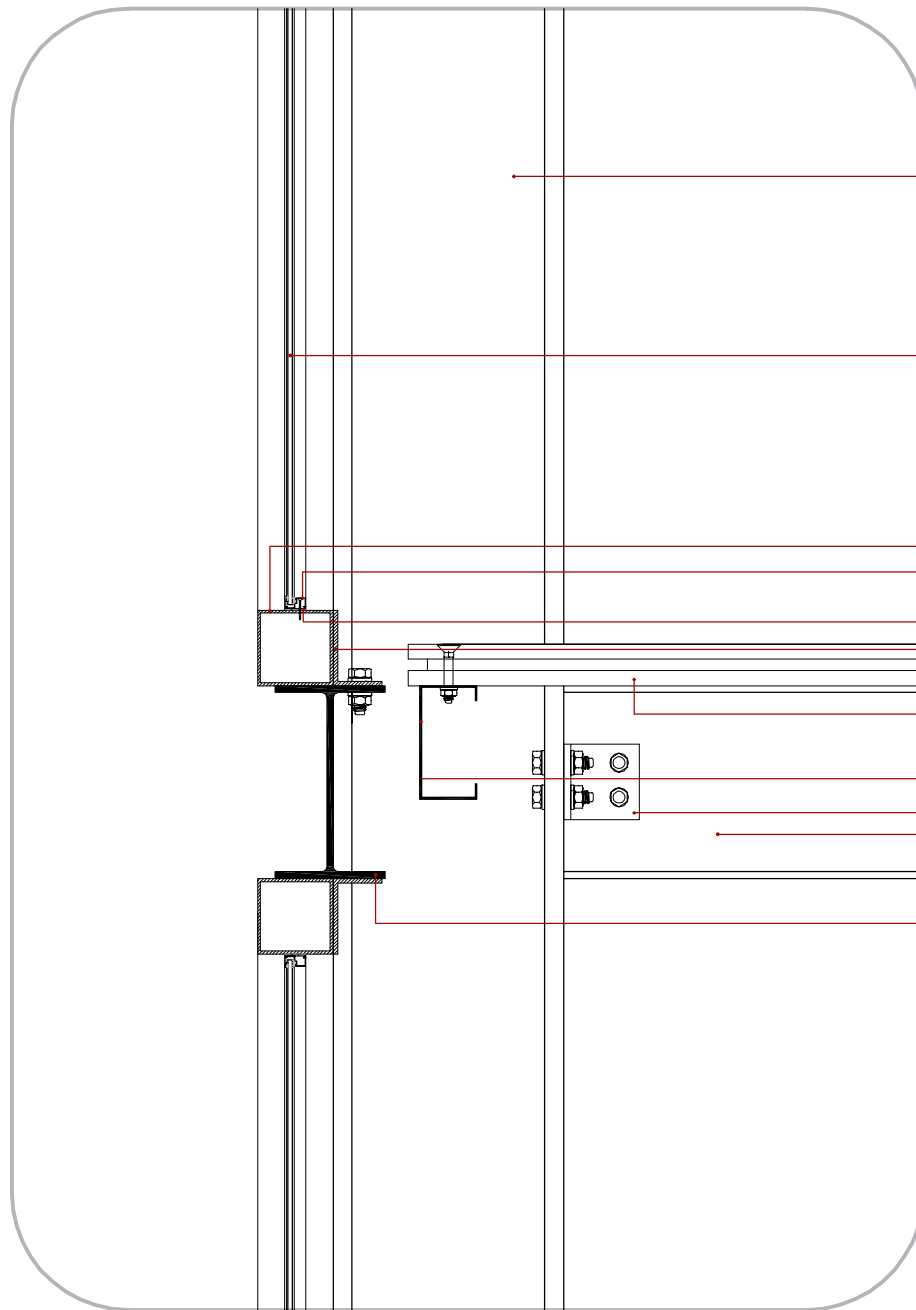
roof edge, polycarbonate sliding panel and sunshade

detail 5	Scale 1:20
	2004_11_08



horizontal pivot door

detail 6	Scale 1:40
	2004_11_08



305 x 305 x 158 structural steel H column with intumescent coating

6mm silkscreened laminated safety glass

100 x 100 x 4 hollow section steel frame
aluminium frame with expanded hollow cell polyethelene gaskets fixed to
hollow section with self-cutting screws

polyethelene tape

100 x 65 x 6 steel angle bracket factory welded to hollow section frame

composite floor panel:

20 mm plywood sheet countersunk-bolted on either side of 15 mm styrofoam
layer and laid on 2mm rubber strip over I beams and purlins

150 x 75 x 20 x 2 cold formed lipped channel purlin welded to H column

100 x 100 x 8 steel angle bracket

254 x 146 x 43 structural steel I beam with thin-film intumescent mastic
coating

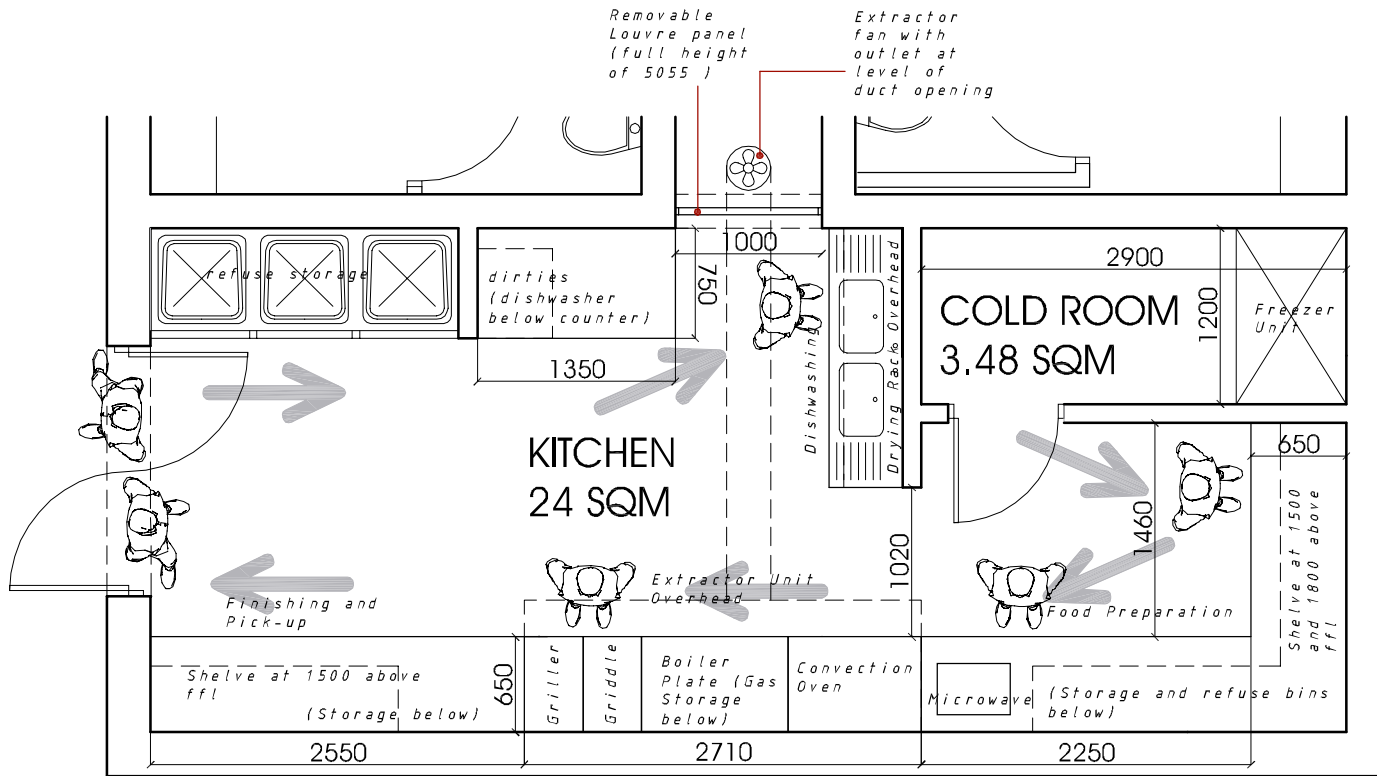
254 x 146 x 43 structural steel I beam with thin-film intumescent mastic
coating
top and bottom flange cut to edge of web at meeting with H column

section: curtain wall

detail 7

Scale 1:10

2004_11_08



NOTES

Based on requirements for 75 meals served during main meal period (Lawson 1981)

- _ deep freeze 1,9 cubic m
- _ cold room 2,25 sqm
- _ dishwashing 3 m (650 deep)
- _ dry stores 7,6 m of shelving (450 wide)
- _ griller 0,2 sqm
- _ griddle 0,25 sqm
- _ convection oven 0,135 cubic m
- _ boiling table 0,7 sqm

- _ worktop and sink height_ 900 mm
- _ worktop depth_ 650 mm
- _ refuse to be removed at end of each day through restaurant to refuse storage in exterior service core
- _ deliveries early morning through restaurant, delivery vehicles to use street parking in Hospital Street

Kitchen layout

detail 8	Scale 1:50
	2004_11_08