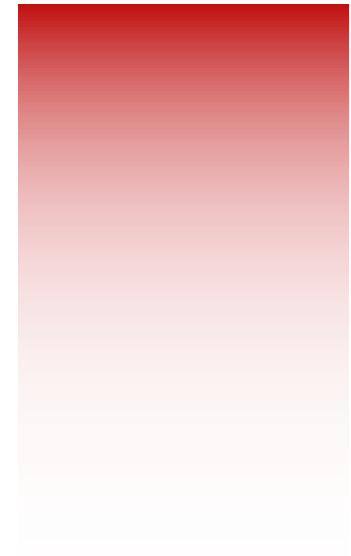
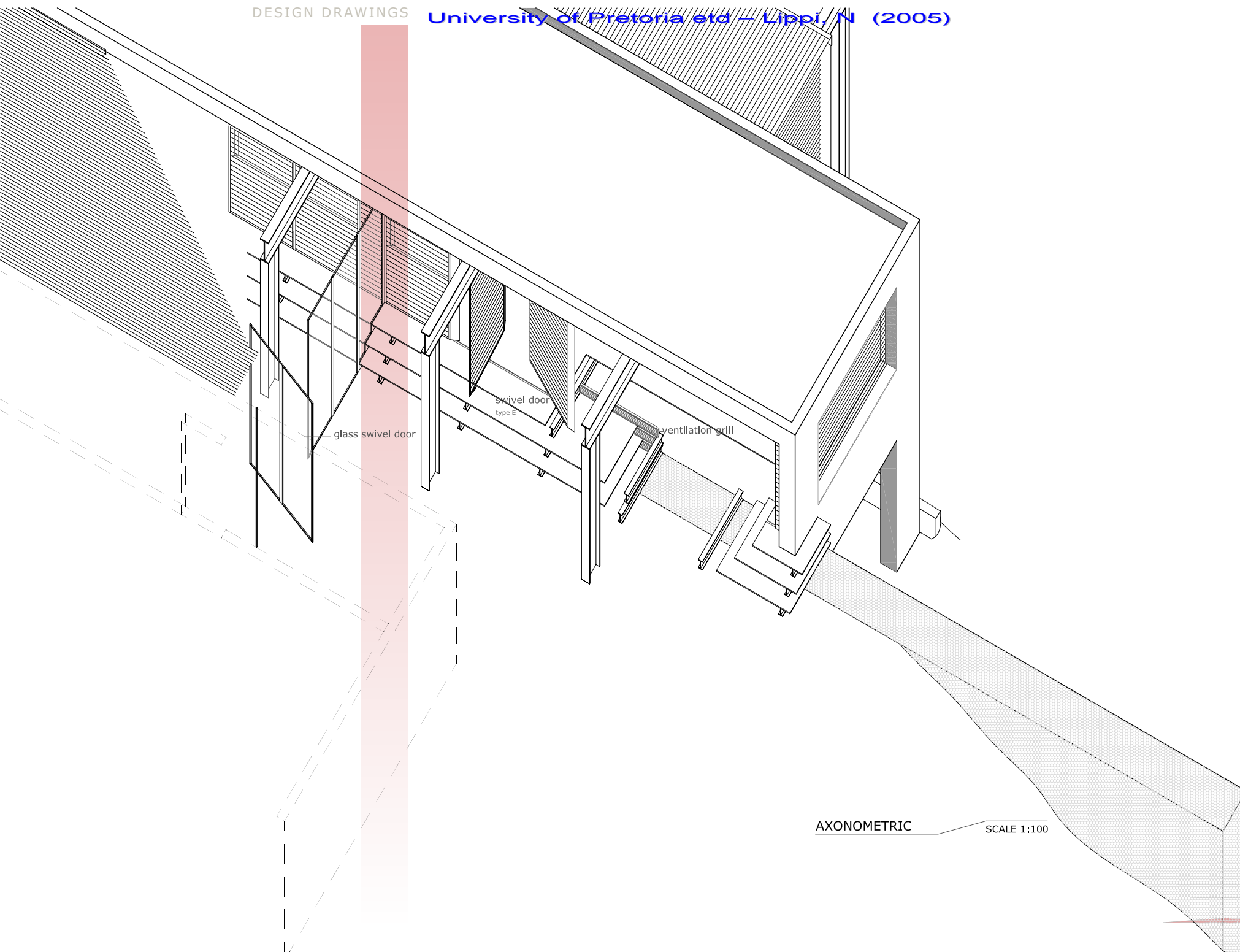


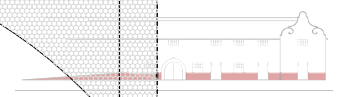
DESIGN DRAWINGS

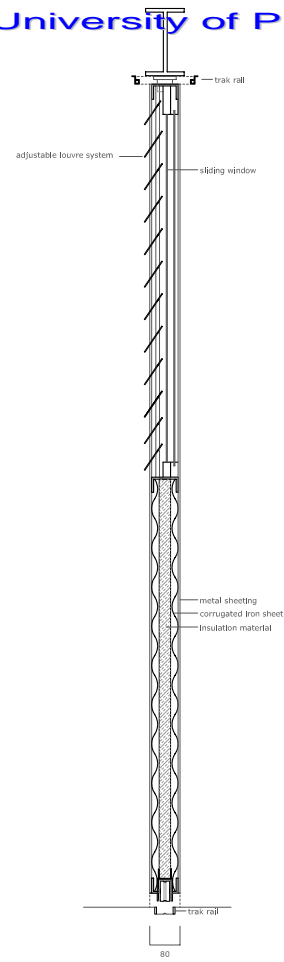




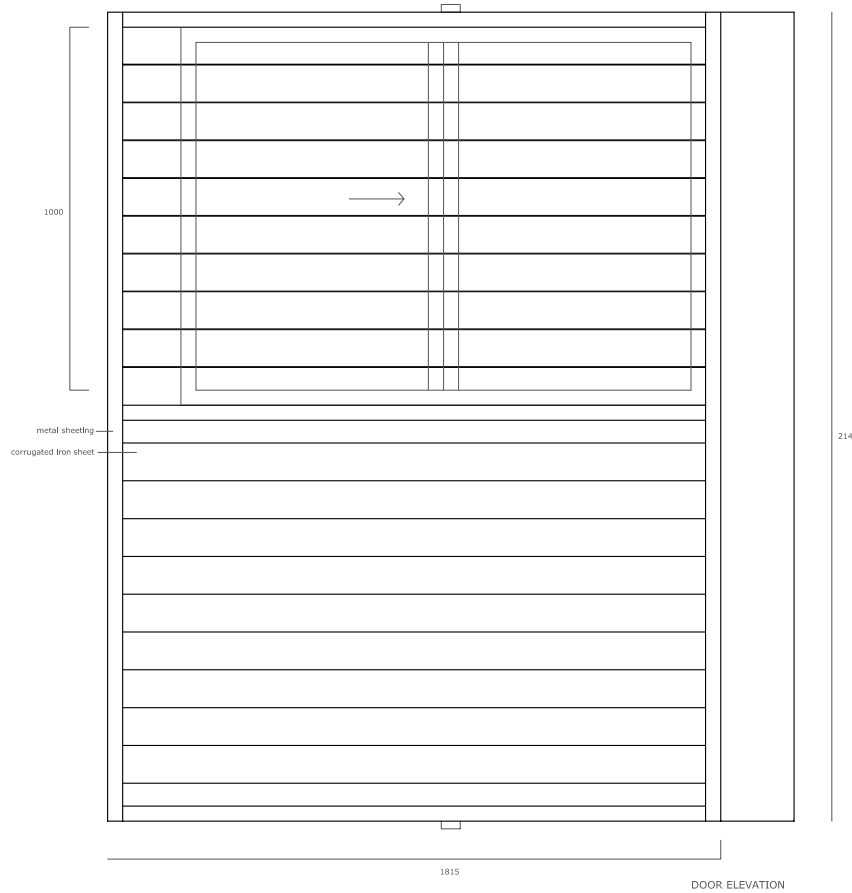
AXONOMETRIC

SCALE 1:100

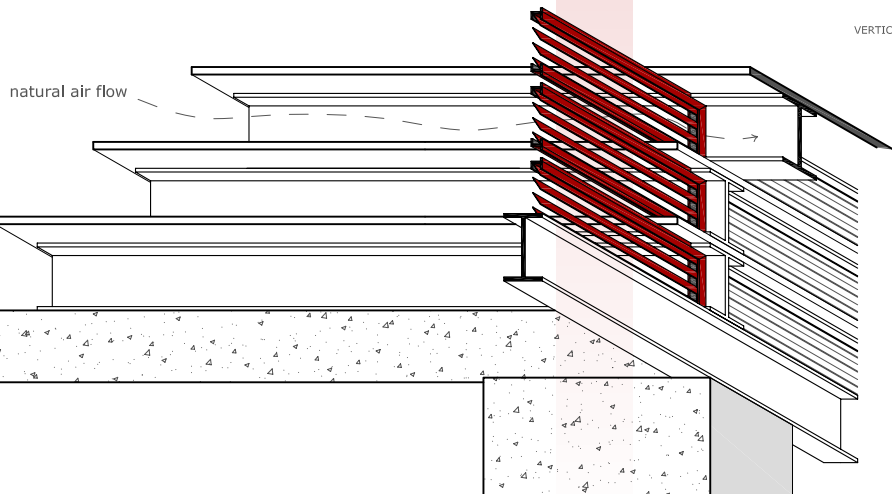




VERTICLE SECTION

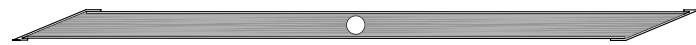


DOOR ELEVATION



VENTILATION GRILL DETAIL

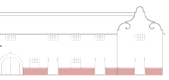
SCALE 1:20

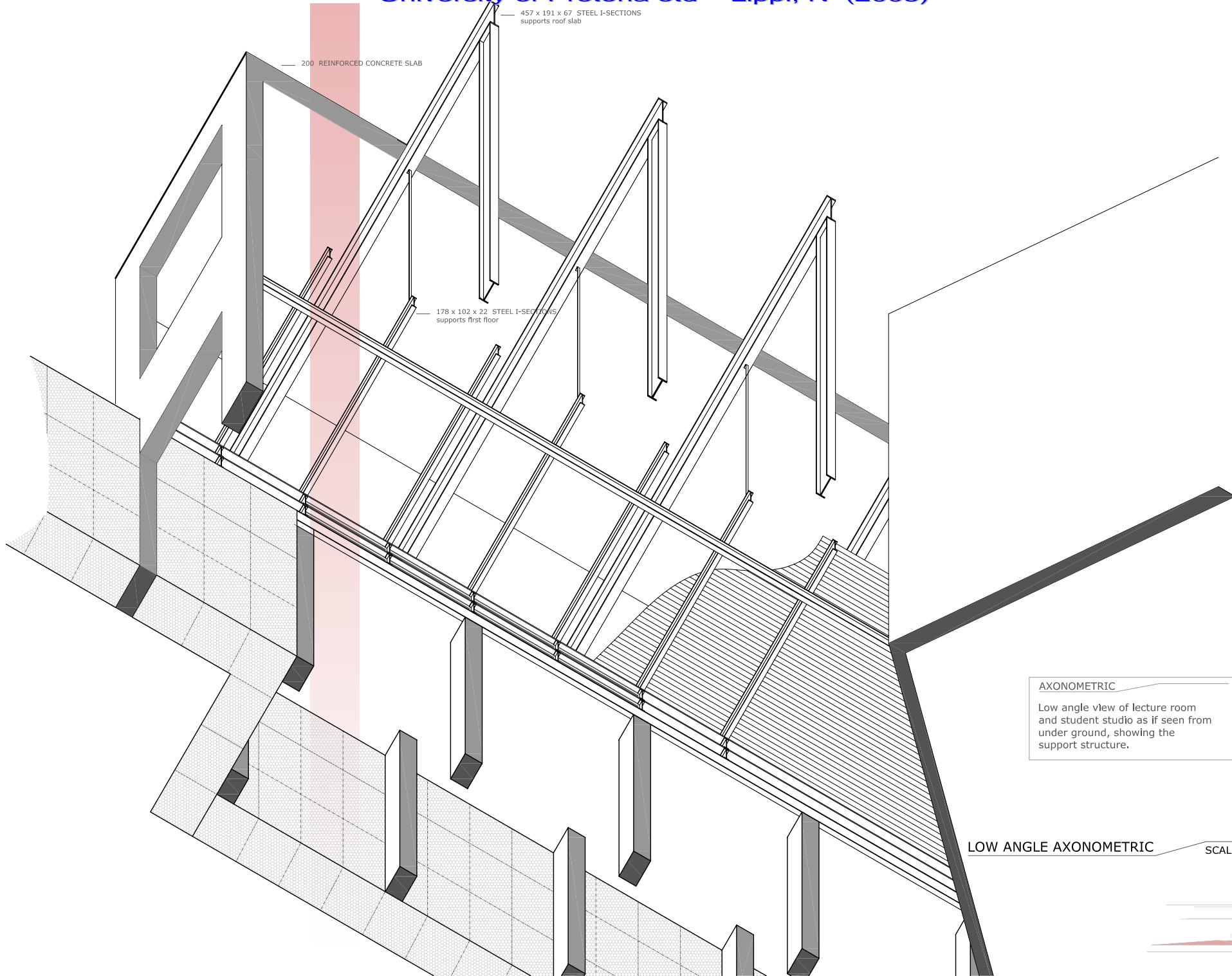


PLAN VIEW



HORIZONTAL SECTION





— 200 REINFORCED CONCRETE SLAB

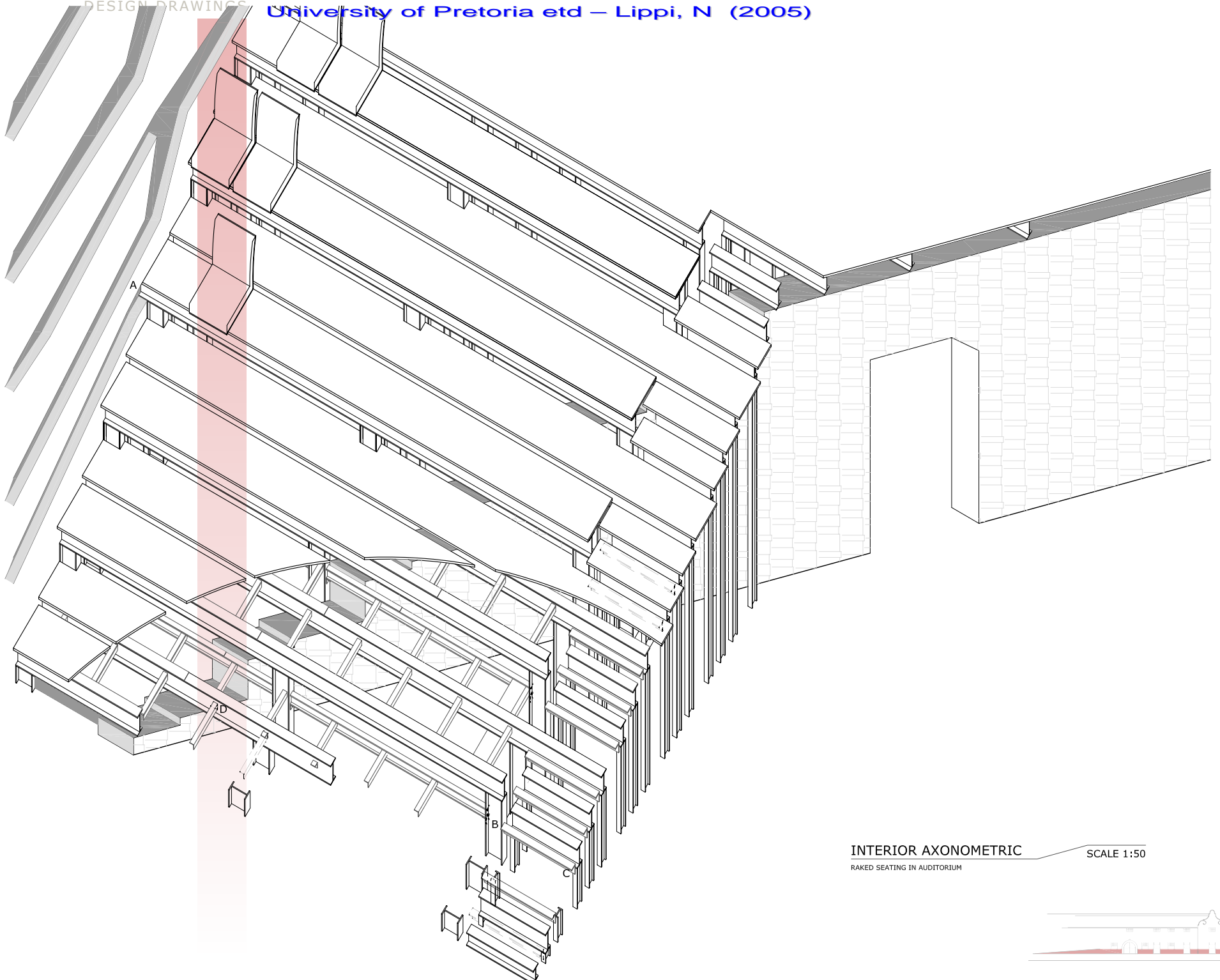
— 457 x 191 x 67 STEEL I-SECTIONS supports roof slab

— 178 x 102 x 22 STEEL I-SECTIONS supports first floor

AXONOMETRIC
Low angle view of lecture room and student studio as if seen from under ground, showing the support structure.

LOW ANGLE AXONOMETRIC SCALE 1:100

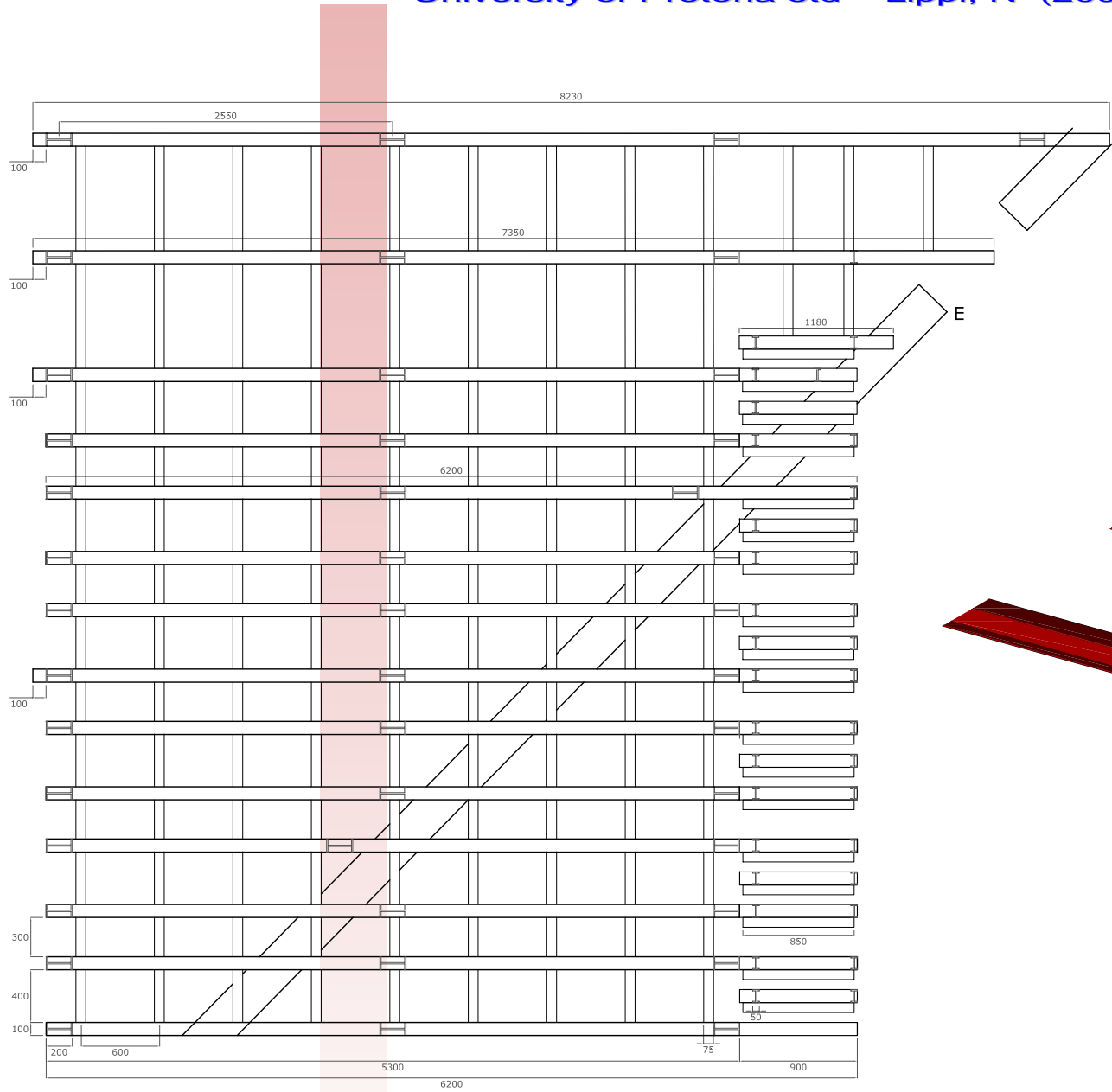




INTERIOR AXONOMETRIC
RAKED SEATING IN AUDITORIUM

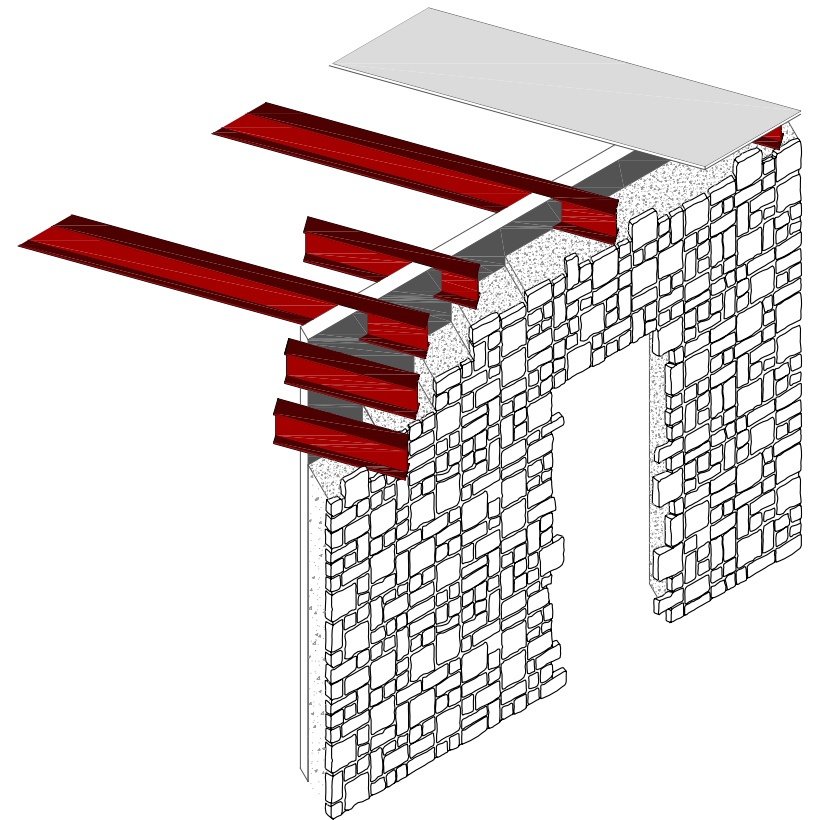
SCALE 1:50





SEATING STRUCTURE

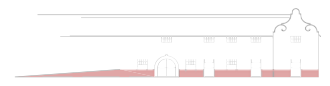
SCALE 1:50

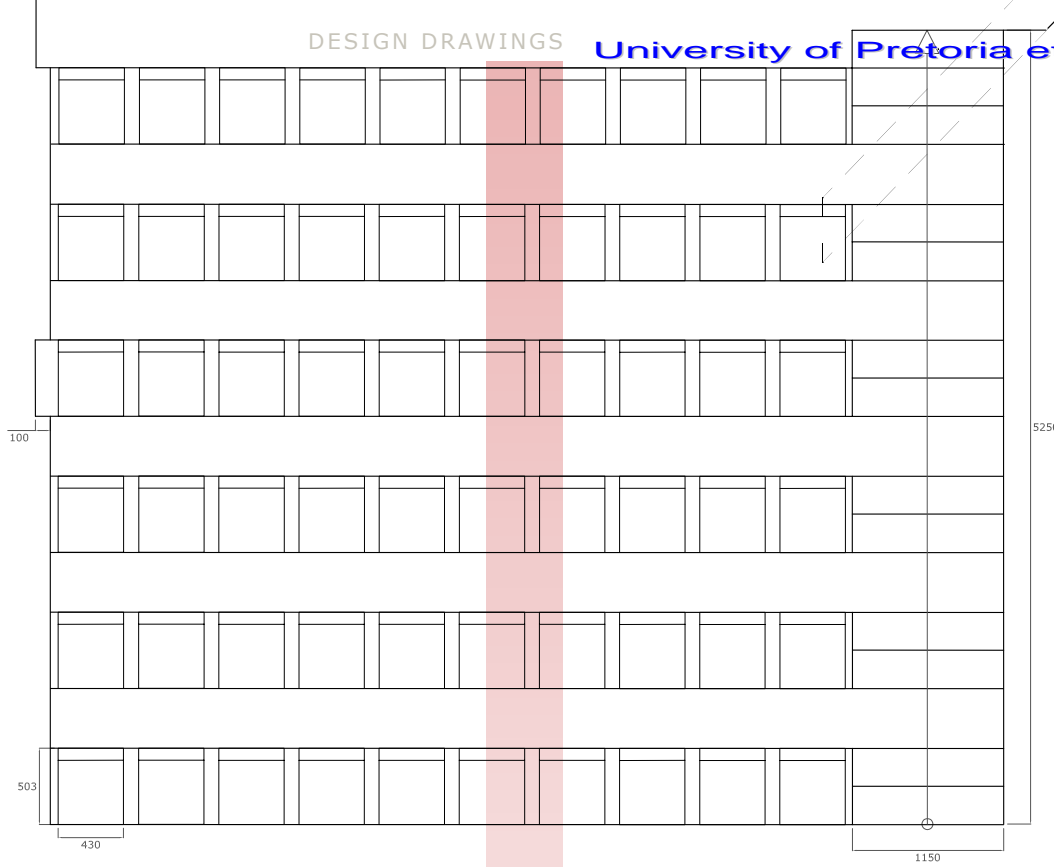


AXONOMETRIC DETAIL E

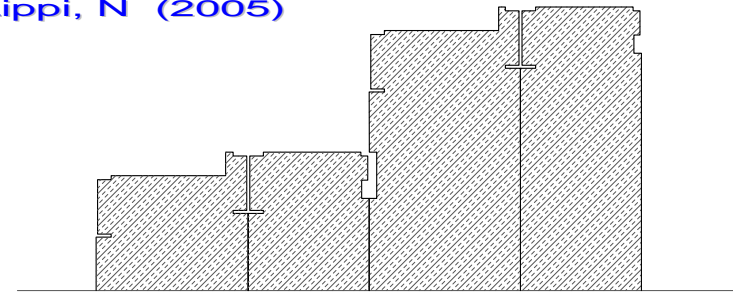
CUTTING THROUGH RETAINING WALL

SCALE 1:50

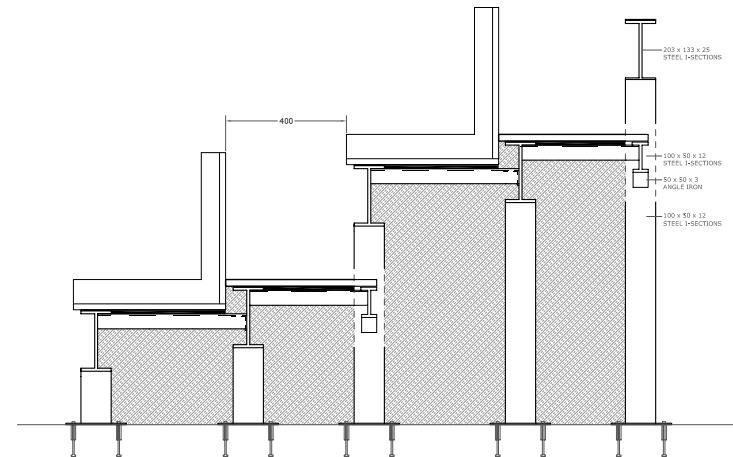




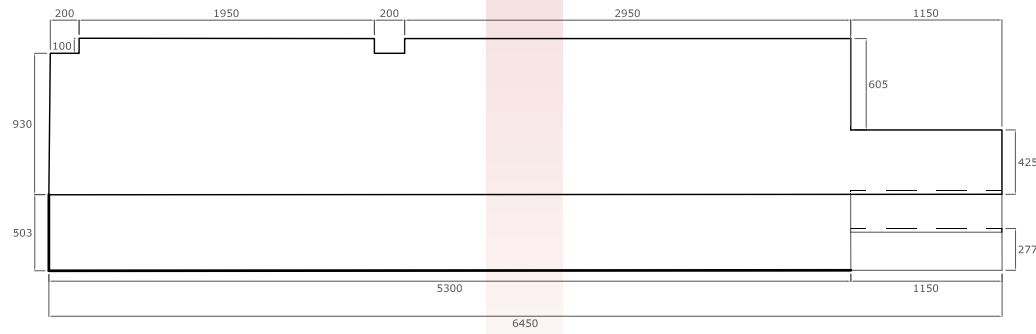
SEATING PLAN SCALE 1:50



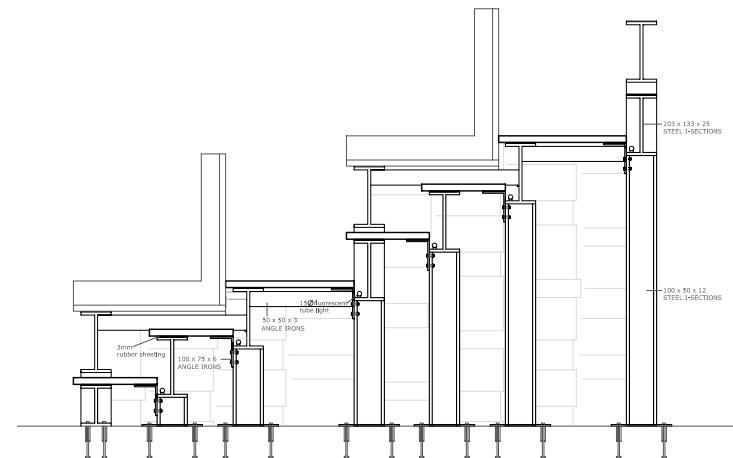
INSULATION BEHIND RETAINING WALL SCALE 1:20



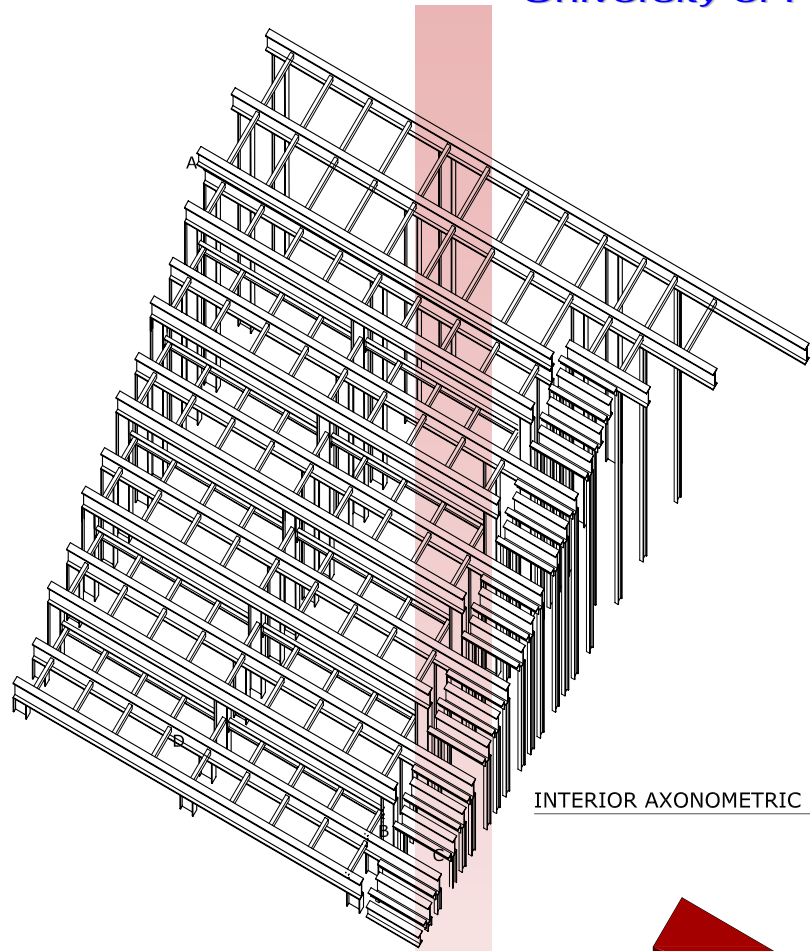
SIDE SECTION SEATING STRUCTURE SCALE 1:20



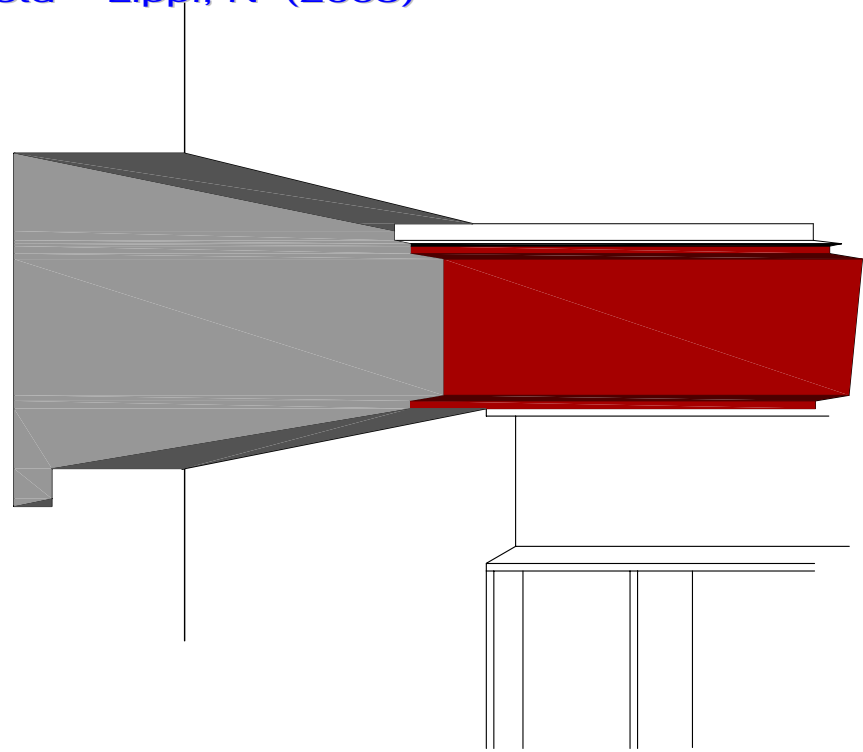
VERTICAL SURFACES PLAN VIEW SCALE 1:50



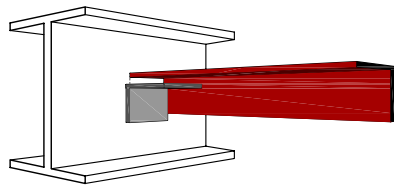
SIDE ELEVATION SEATING & STEP STRUCTURE SCALE 1:25



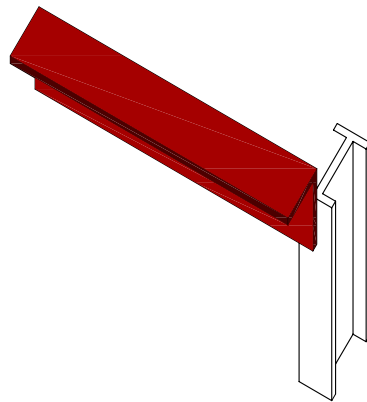
INTERIOR AXONOMETRIC SCALE 1:100



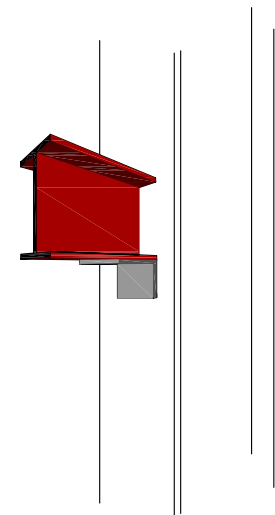
ELEMENT RELATION DETAIL SCALE 1:10
DETAIL A



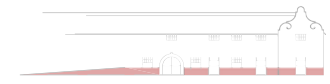
JOIN DETAILS SCALE 1:10
WITH WELDED JOINTS
DETAIL D

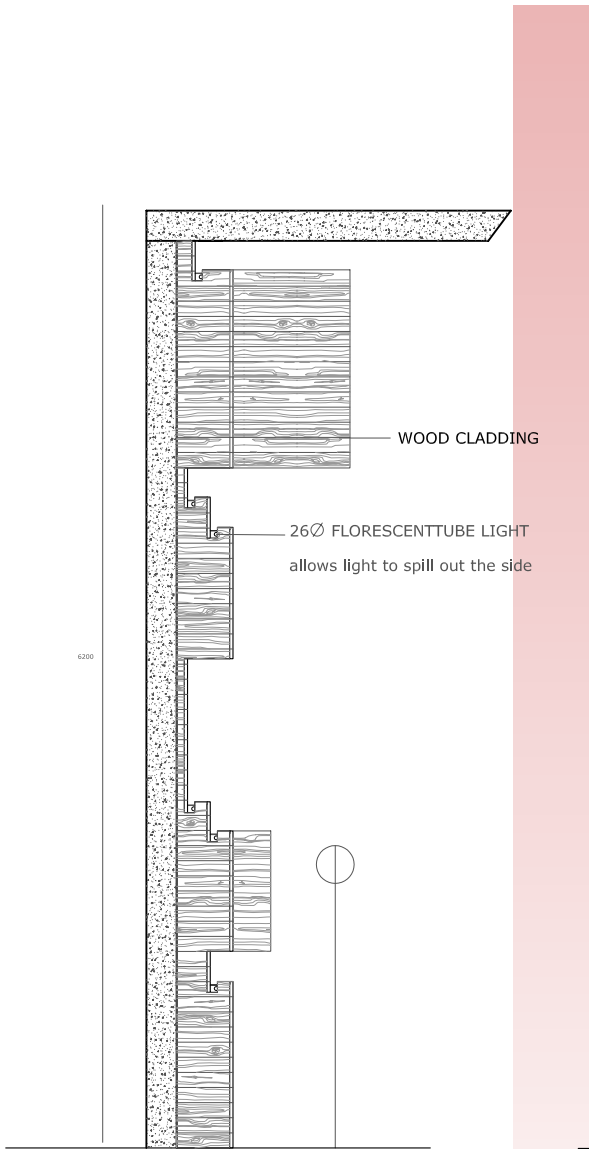


JOIN DETAILS SCALE 1:10
WITH WELDED JOINTS
DETAIL C

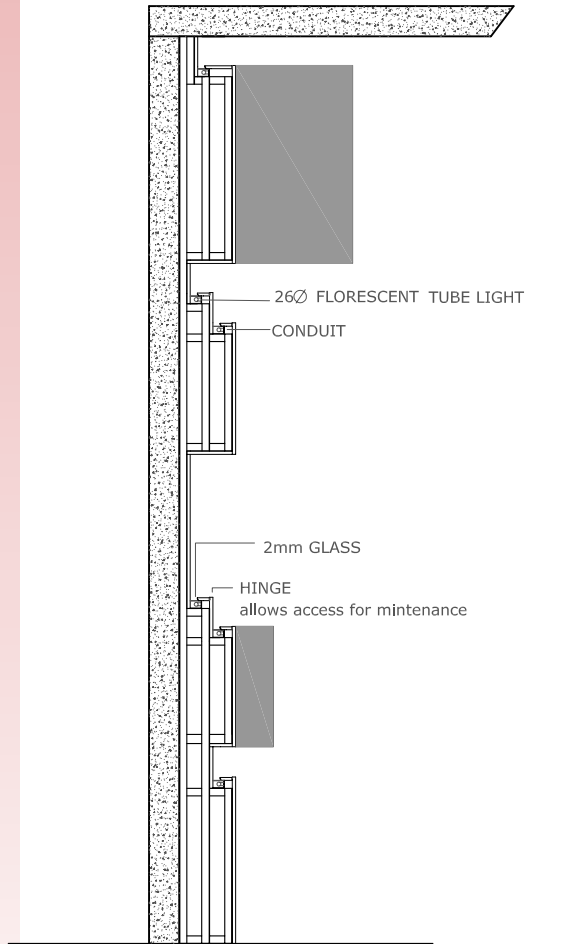


JOIN DETAILS SCALE 1:10
WITH WELDED JOINTS
DETAIL B

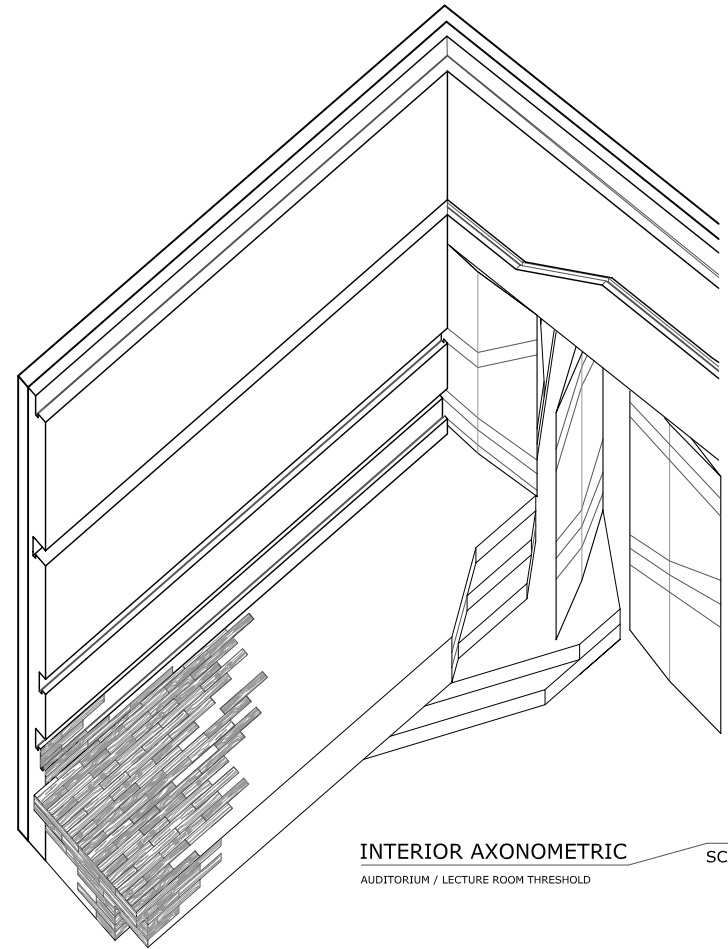




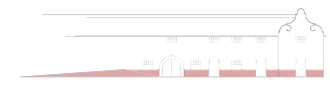
ELEVATION OF WALL END SCALE 1:20

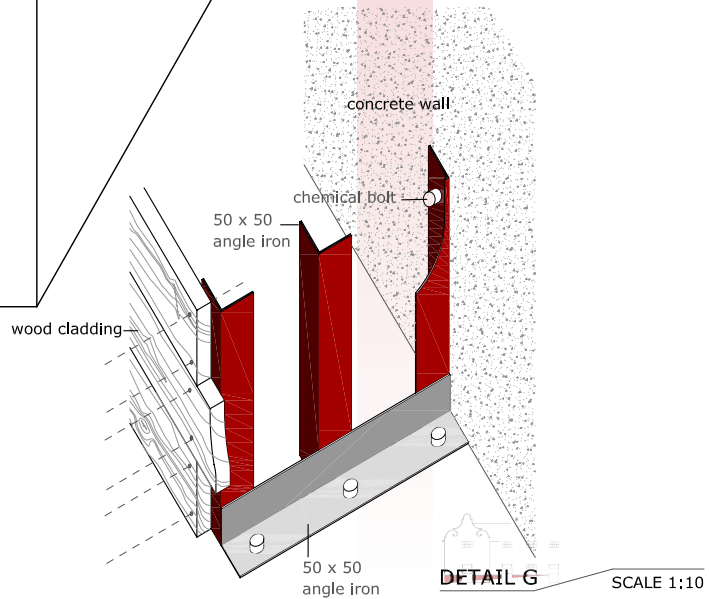
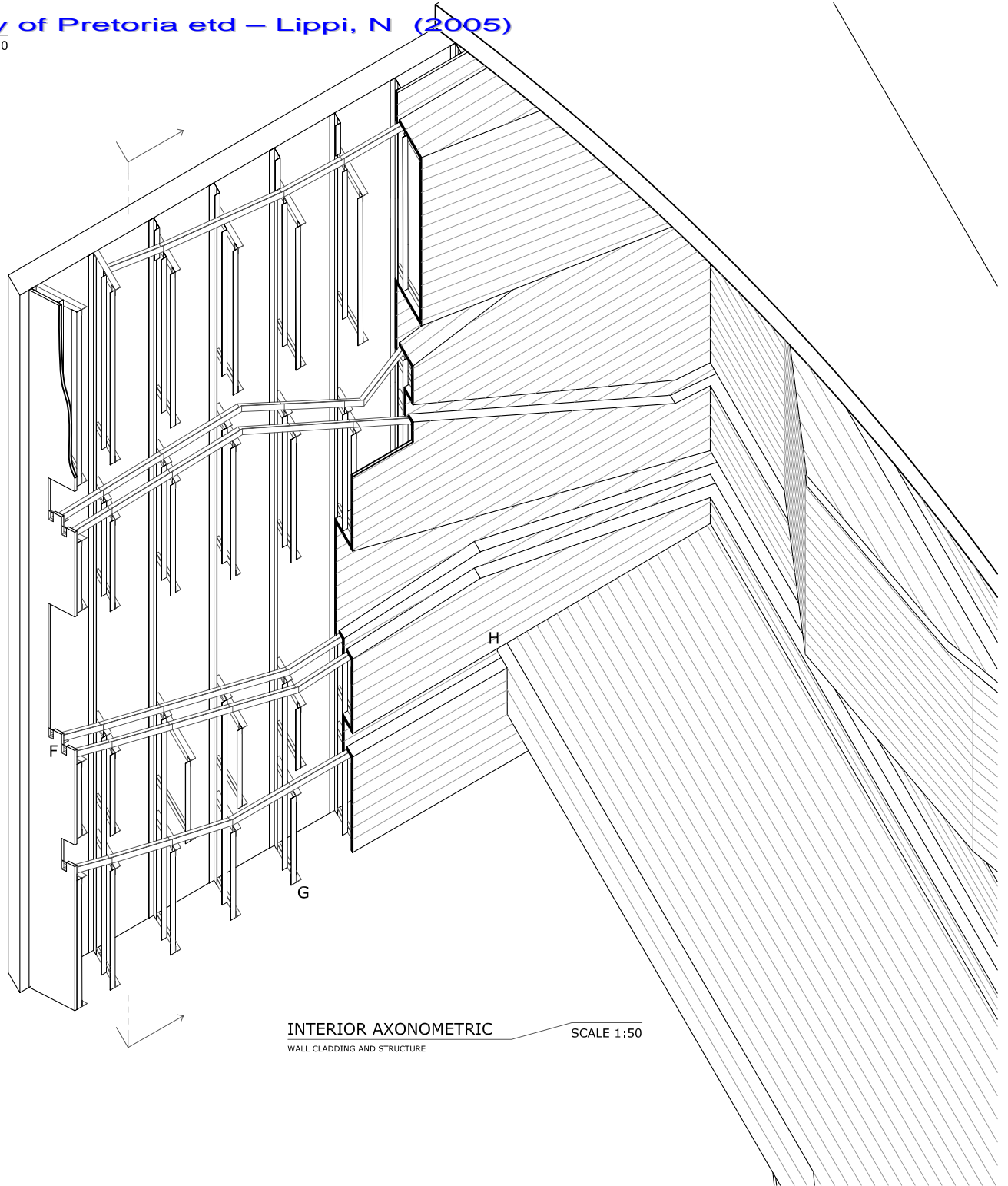
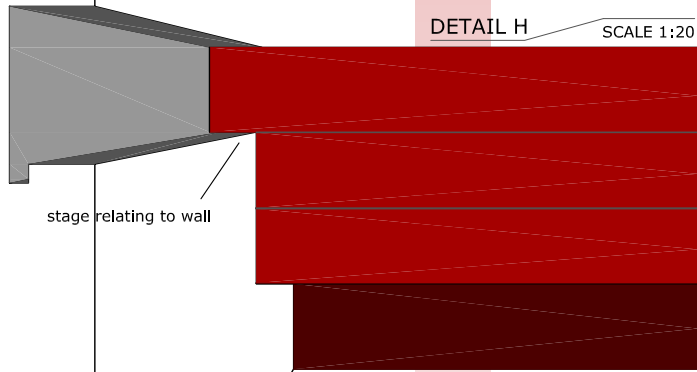
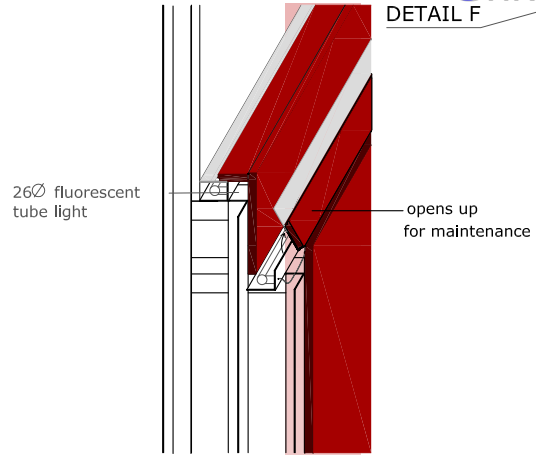


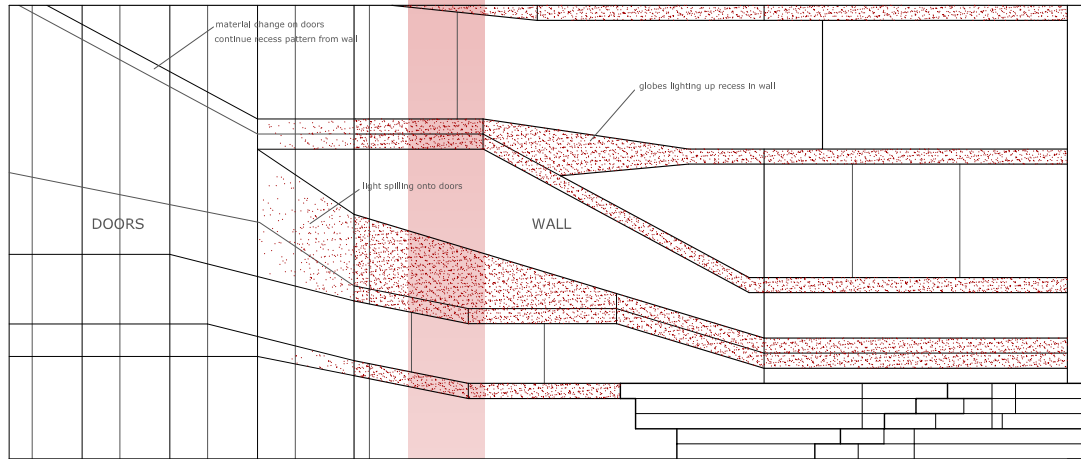
SECTION THROUGH WALL SCALE 1:20
INDICATED ON AXONOMETRIC



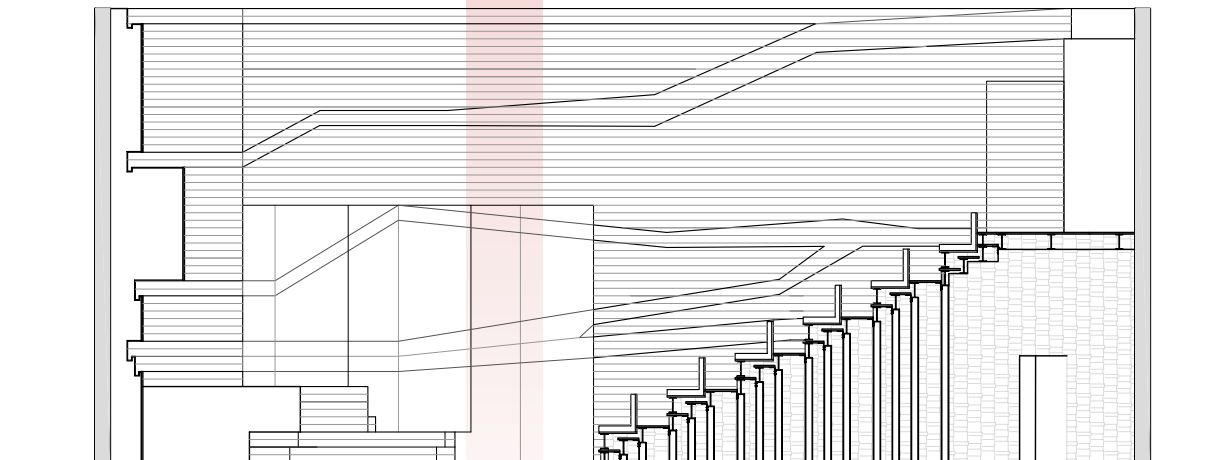
INTERIOR AXONOMETRIC SCALE 1:100
AUDITORIUM / LECTURE ROOM THRESHOLD



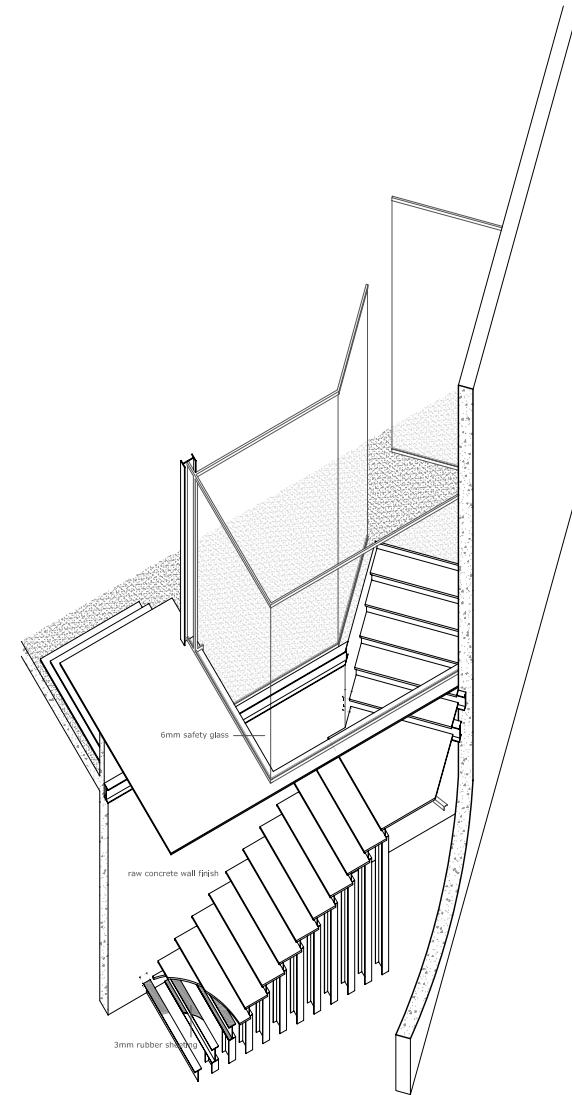




SECTION C
INDICATED ON GROUND FLOOR PLAN SCALE 1:100



SECTION D
INDICATED ON GROUND FLOOR PLAN SCALE 1:50



STAIRCASE AXONOMETRIC
LECTURE ROOM SCALE 1:100

