

Addendum A



suggested connection points of walkway to the Point Development [interview wood: 29 July 2005]

Addendum B

CRUISE LINER SCHEDULE 2004 - 2005									
AGENT	MSC	BARWIL	GULF SHIPPING	KING & SONS	KING & SONS	KING & SONS	ISS-VOIGT	JOHN T RENNIES	
TEL. NO.	360-7911	304-8666	305-2156	302-4767	302-4767	302-4767	207-1451	328-0401	
CRUISE LINER	RHAPSODY	THE WORLD	MINERVA II	PACIFIC PRINCESS	ROYAL PRINCESS	DELPHIN RENAISSANCE	ROYAL STAR	ASTOR	
MONTH	DATE	DAY	TIME						
OCT '04	23	SAT				08h00-18h00			
NOV '04	26	FRI	08h00-16h00						
	28	SUN	08h00-13h00						
DEC '04	01	WED	07h00-16h00						
	03	FRI							
	06	MON							
	09	THU	07h00-16h00						
	10	FRI							
	11	SAT	08h00-13h00						
	13	MON				07h00-18h00			
	14	TUE	08h00-13h00				08h00-18h00		
	15	SAT	07h00-13h00	08h00-					
	19	SUN		-23h59					
	20	MON							
	21	TUE	07h00-15h00						
	23	THU				07h00-18h00			
	27	MON	08h00-12h00						
JAN '05	03	MON							
	05	WED				06h00-18h00			
	06	THU	09h00-16h00						
	08	SAT		12h00-					
	09	SUN		-18h00					
	10	MON	07h00-15h00						
	14	FRI	07h00-13h00						
	17	MON	07h00-16h00					08h00-23h00	
	21	FRI	07h00-13h00						
	24	MON	07h00-15h00						
	28	FRI	07h00-16h00						
	30	SUN	08h00-13h00				07h00-16h00		

AGENT	MSC	JOHN T RENNIE	ISS-VOIGT	ISS-VOIGT	KING & SONS	KING & SONS	BARWIL		
TEL. NO.	360-7911	328-0401	207-1451	207-1451	302-7467	302-7467	304-8666		
CRUISE LINER	RHAPSODY	PRINSENDAM	ALBATROS	ROYAL STAR	MAXIM GORKIY	SAGE ROSE	SILVER WIND		
MONTH	DATE	DAY	TIME						
FEB '05	05	SAT	07h00-16h00						
	07	MON	08h00-16h00		07h00-				
	08	TUE							
	09	WED			-13h00				
	11	FRI	07h00-13h00						
	12	SAT				07h00-16h00			
	13	SUN							
	14	MON	07h00-15h00						
	18	FRI	07h00-13h00						
	21	MON	07h00-16h00						
	28	MON	07h00-15h00						
MAR '05	04	FRI	07h00-13h00						
	06	SUN					08h00-23h00		
	07	MON	07h00-16h00						
	11	FRI	07h00-13h00						
	14	MON	07h00-15h00						
	18	FRI	07h00-13h00						
	20	SUN					08h00-23h00		
	21	MON	07h00-16h00						
	25	FRI	07h00-13h00						
	28	MON	07h00-16h00						
APR '05	01	FRI	07h00-16h00						
	02	SAT				07h00-22h00			
	03	SUN	08h00-16h00				06h00-23h59		
	11	THU		06h00-17h00					

Illustrations

Fig. 1.1 Durban CBD - author

Fig. 2.1 Battery bay. Southwood, 2005. *Elle Decoration*, South Africa Autumn 2005, Urban Issue, No. 36
 Fig. 2.2 model of Durban - author

Fig. 3.1 The bay, Bluff and Point from Berea, by West, 1859. Kearney, 2002.
 Fig. 3.2 The Natal one penny stamp. Kearney, 2002.
 Fig. 3.3 Palm. Verster, 1985.
 Fig. 3.4 global location - author
 Fig. 3.5 BAT centre - author
 Fig. 3.6 Durban city hall - author
 Fig. 3.7 ICC - author
 Fig. 3.8 ICC - author
 Fig. 3.9 Memorial - author
 Fig. 3.10 Nedbank building designed by Norman Eaton - author
 Fig. 3.11 Vasco da Gama clock - author
 Fig. 3.12 sugar terminal buildings - author
 Fig. 3.13 yacht - author
 Fig. 3.14 eThekweni municipal area - author
 Fig. 3.15 Art Deco - City Architects, Architecture & Buildings Department, eThekweni Municipality, 2004
 Fig. 3.16 aerial photograph of Durban CBD - eThekweni Municipality
 Fig. 3.17 figure ground study - author
 Fig. 3.18 point development under construction - National Ports' Authority
 Fig. 3.19 BAT centre and city edge - National Ports' Authority
 Fig. 3.20 harbour entrance – National Ports' Authority
 Fig. 3.21 T-jetty – National Ports Authority
 Fig. 3.22 aerial photograph of site and surrounding landscape – eThekweni Municipality
 Fig. 3.23 Ceramic tiles, student project. Franzen, 2004.
 Fig. 3.24 sun angles for Durban. Holm, 1996.
 Fig. 3.25 wind rose for Durban. Holm, 1996.
 Fig. 3.26 MSC Rhapsody – passenger accommodation plan supplement

Fig. 4.1 Foreign Office Architects: Yokohama International Port Terminal. Brayer et al, 2001.
 Fig. 4.2 Section Yokohama Port Terminal. Webb, 2003. *The Architectural Review*. January 2003, p. 31
 Fig. 4.3 Electric Ladyland Offices. Unknown, 2002. *S.A. Architect*. October 2002, p. 34-36
 Fig. 4.4 Electric Ladyland Offices. Unknown, 2002. *S.A. Architect*. October 2002, p. 34-36
 Fig. 4.5 Electric Ladyland Offices. Unknown, 2002. *S.A. Architect*. October 2002, p. 34-36
 Fig. 4.6 Electric Ladyland Offices. Unknown, 2002. *S.A. Architect*. October 2002, p. 34-36
 Fig. 4.7 Elevation: Electric Ladyland Offices. Unknown, 2002. *S.A. Architect*. October 2002, p. 34-36
 Fig. 4.8 Site Plan: Electric Ladyland Offices. Unknown, 2002. *S.A. Architect*. October 2002, p. 34-36
 Fig. 4.9 Rereading the City. Brayer et al, 2001.
 Fig. 4.10 Rereading the City. Brayer et al, 2001.
 Fig. 4.11 Rereading the City. Brayer et al, 2001.
 Fig. 4.12 The single concrete band points out over the gorge. Betsky, 2002.
 Fig. 4.13 The single concrete band points out over the gorge. Betsky, 2002.
 Fig. 4.14 Pergias's Via dell' Acquedotto. Rudofsky, 1964.
 Fig. 4.15 Pergias's Via dell' Acquedotto. Rudofsky, 1964.
 Fig. 4.16 Pergias's Via dell' Acquedotto. Rudofsky, 1964.
 Fig. 4.17 Pergias's Via dell' Acquedotto. Rudofsky, 1964.
 Fig. 4.18 Robben Island Ferry Terminal Building. Le Grange, 2000. *S.A. Architect*. August 2000, p. 30-35
 Fig. 4.19 Site plan: Robben Island Ferry Terminal Building. Le Grange, 2000. *S.A. Architect*. August 2000, p. 30-35
 Fig. 4.20 Section: Robben Island Ferry Terminal Building. Le Grange, 2000. *S.A. Architect*. August 2000, p. 30-35
 Fig. 4.21 Cover: How Green is your Garden? Lim, 2004.
 Fig. 4.22 Ivy: Jors Laarman. www.jorslaarman.com, 2005.
 Fig. 4.23 Ivy: Jors Laarman. www.jorslaarman.com, 2005.
 Fig. 4.24 Ivy: Jors Laarman. www.jorslaarman.com, 2005.
 Fig. 4.25 Thesis Project: Eleanor Rennie. Spiller, 2001. *Architectural Design*. February 2001. vol. 71 issue 1, p. 74-79
 Fig. 4.26 Thesis Project: Eleanor Rennie. Spiller, 2001. *Architectural Design*. February 2001. vol. 71 issue 1, p. 74-79
 Fig. 4.27 Thesis Project: Eleanor Rennie. Spiller, 2001. *Architectural Design*. February 2001. vol. 71 issue 1, p. 74-79

Fig. 5.1 How Green is Your Garden. Lim, 2004.
 Fig. 5.2 palm - author

Fig. 6.1 view of concept model - author
 Fig. 6.2 view of concept model - author

Fig. 6.3 view of concept model - author
 Fig. 6.4 view of concept model - author
 Fig. 6.5 view of concept model - author
 Fig. 6.6 view of concept model - author
 Fig. 6.7 view of concept model - author
 Fig. 6.8 plan concept sketch with surrounding views - author
 Fig. 6.9 plan concept sketch - author
 Fig. 6.10 view of concept model - author
 Fig. 6.11 view of concept model - author
 Fig. 6.12 view of concept model - author
 Fig. 6.13 view of concept model - author
 Fig. 6.14 view of concept model - author
 Fig. 6.15 view of concept model - author
 Fig. 6.16 view of concept model - author
 Fig. 6.17 concept sketch exploring movement through site – author
 Fig. 6.18 concept model exploring landscape - author
 Fig. 6.19 album cover. Razorlight, 2005.
 Fig. 6.20 The liner "France". Le Corbusier, 1986.
 Fig. 6.21 The cunarder "Aquitania" compared with various buildings. Le Corbusier, 1986.

Fig. 7.1 urban intervention - author
 Fig. 7.2 plan of 3D-model - author
 Fig. 7.3 elevated north west view of 3D-model - author
 Fig. 7.4 north elevation of 3D-model - author
 Fig. 7.5 north view of 3D-model - author
 Fig. 7.6 elevated south east view of 3D-model - author
 Fig. 7.7 view of primary entrance - author
 Fig. 7.8 elevated northern view of 3D-model - author
 Fig. 7.9 circulation layout - author
 Fig. 7.10 circulation layout - author
 Fig. 7.11 viewing platform - author
 Fig. 7.12 circulation ramp - author
 Fig. 7.13 viewing platform - author
 Fig. 7.14 foyer - author
 Fig. 7.15 restaurant view - author
 Fig. 7.16 entrance - author
 Fig. 7.17 north-west elevation - author
 Fig. 7.18 circulation ramp - author
 Fig. 7.19 entrance - author
 Fig. 7.20 external ramp and stairs - author
 Fig. 7.21 pivot doors - author
 Fig. 7.22 view from public parking - author

Fig. 8.1 detail design - author
 Fig. 8.2 detail design - author
 Fig. 8.3 roof detail design - author
 Fig. 8.4 low inclination solid roof strategies: roof garden, Hyde, 2000.
 Fig. 8.5 accessible roof, Hyde, 2000.
 Fig. 8.6 building section showing cross ventilation - author
 Fig. 8.7 section through walkway - author
 Fig. 8.8 design sections through walkway - author
 Fig. 8.9 rough off-shutter concrete wall - author
 Fig. 8.10 smooth off-shutter concrete wall - author
 Fig. 8.11 rough concrete wall - author
 Fig. 8.12 lichen - author
 Fig. 8.13 timber battens - author
 Fig. 8.14 mosaic - author
 Fig. 8.15 pivot door detail - author
 Fig. 8.16 balustrade study - author
 Fig. 8.17 external floor surfaces and lighting - author
 Fig. 8.18 waiting shelter - author
 Fig. 8.19 mangrove and wetland system - author
 Fig. 8.20 diagrammatic section across a mangrove community, Berjak, 1977.
 Fig. 8.21 vegetation wall design - author
 Fig. 8.22 sunscreen design - author

Fig. 9.1 graffiti - author

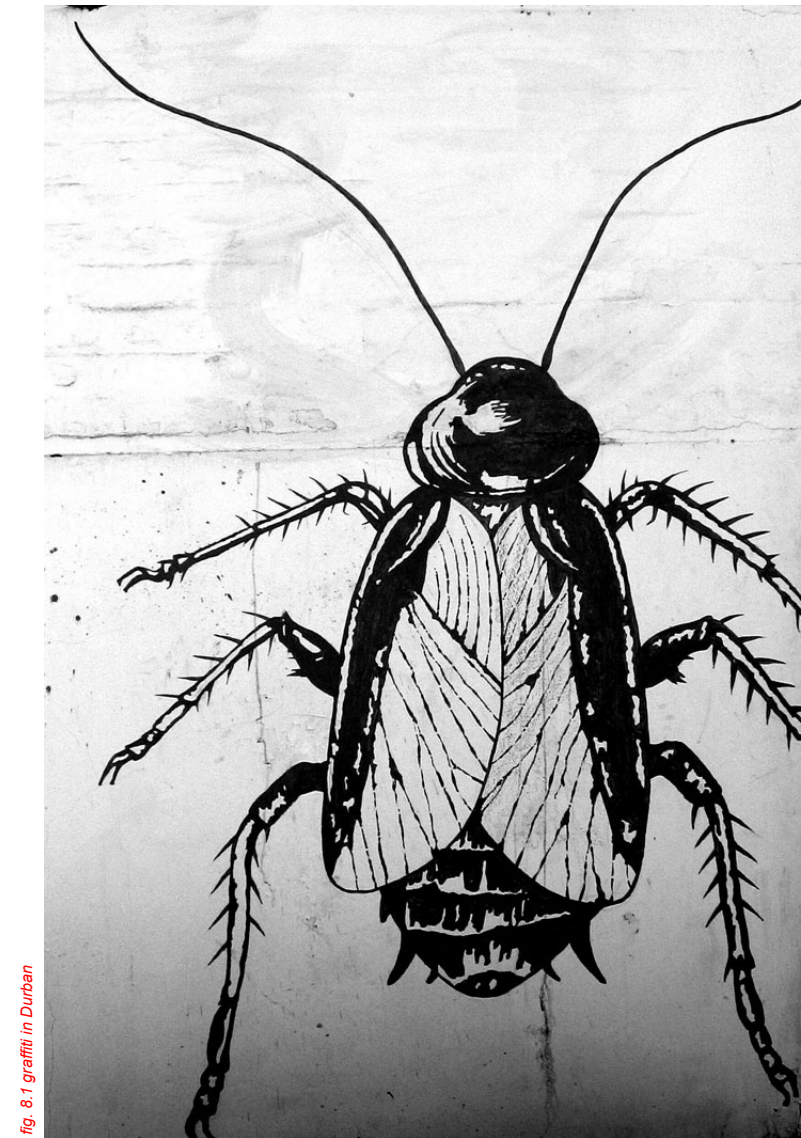


fig. 8.1 graffiti in Durban

Sources

- Beatrice, S & Brayer, M. 2003. *ArchiLab's Earth Buildings: Radical Experiments in Land Architecture*. London: Thames and Hudson.
- Berjak, P et al. 1977. *In the Mangroves of Southern Africa*. Durban: Wildlife Society of Southern Africa.
- Betsky, A. 2002. *Landscrapers: Building with the Land*. London: Thames and Hudson.
- Thompson, J. 2002. *40 Architects Under 40*. London: Thames and Hudson.
- Blake, P. 1960. *Mies van der Rohe: Architecture and Structure*. Middlesex: Penguin Books Ltd.
- Brayer, M & Migayrou, F. 2001. *ArchiLab: Radical Experiments in Global Architecture*. London: Thames and Hudson.
- Capra, F. 1982. *Web of Life*.
- Cerver, F. 2000. *The World of Contemporary Architecture*. Cologne: Konemann.
- Ching, DK. 1979. *Architecture: Form, Space & Order*. New York: Van Nostrand Reinhold Company.
- Grafe, C et al. 1997. *Design and Analysis*. Rotterdam: 010 Publishers.
- Holm, D. 1996. *Manual for Energy Conscious Design Document*.
- Hyde, R. 2000. *Climate Responsive Design*. London: E & FN Spon.
- Joffe, P. 2001. *Creative Gardening with indigeneous Plants: a South African Guide*. Pretoria: Briza Publications
- Kearney, B. 1973. *Architecture in Natal from 1824 to 1893*. Cape Town: Balkema.
- Kearney, B et al. 2002. *A Warrior's Gateway: Durban and the Anglo-Boer War, 1899-1902*. Pretoria: Protea Book House.
- Kearney, B. 1984. *A Revised listing of the Important Places and Buildings in Durban*. Durban: City Council of Durban.
- Khoolhaas, R. 2004. *Content*. Kolin: Taschen.
- Le Corbusier. 1986. *Towards a New Architecture*. London: John Rodker.
- Lim, CJ. 2003. *How Green is Your Garden?* Lomdon: Wiley-Academy.
- Lootsma, B. 2000. *Superdutch*. London: Thames and Hudson.
- Low, B & Rebelo, T. 1998. *Vegetation of South Africa, Lesotho and Swaziland*. Pretoria: Department of Environment affairs and Tourism.
- Pawson, J. 1996. *Minimum*. London: Phaidon Press Limited.
- Reed, P. 2005. *Groundswell*. New York: Museum of Modern Art.
- Rudofsky, B. c1969. *Streets for People: a primer for Americans*. New York: Doubleday
- Sturgeon, A. 1998. *Planted*. London: Hodder and Stoughton.
- van Niekerk, B. 1985. *Durban at Your Feet: an Alternative Guide to a City*. Overport: Overport Publishers.
- Venter, F & Venter, J. 1996. *Making the most Indigenous Trees*. Pretoria: Briza Publications.
- Webb, T. 1967. *Handbook of South African Natural Building Stone*. Cape Town: The National Development Fund for Building Industry.

Periodicals

- Allford, S. 2002. *Ticket to Ride*. Architects' Journal. Vol. 216/9. p. 24-31.
- Capezzuto, R. 2004. *Forum 2004 Barcelona. On esta en Roig?*. Domus. June 871. p. 40-49.
- Giesen, M. 2002. *Social Responsibility and Renewable Energy Options*. Business and Sustainable Development Urban Green File – World Summit. p. 189-190.
- Le Grange, L. 2000. *Project Awards: Robben Island Ferry Terminal at V&A Waterfront*. S.A. Architect. August 2000. p. 30-35.
- Moore, R. 2002. *Point of Departure*. Domus. September 851. p. 64-75.
- Peters, W. 2004. *Constitutional Court, 1 Constitutional Hill, Johannesburg*. KZ-NIA Journal. March 2004. p. 2-5.
- Slatin, P. 2003. *Origami Experience. From Organic Topography, A Basis of*. ARCHITECTURE. February 2003. p. 68-73.
- Spiller, N. 2001. *Young Blood*. Architectural Design. February 2001. vol. 71 issue 1. p. 74-79.
- Webb, M. 2003. *Cruise Control*. Architectural Review. January 2003. p. 26-35.

Reports

- African CBD. 2000. *ACBD Workshop Report April 2000*. Durban: African CBD.
- City Architects, Architecture & Buildings Department, eThekweni Municipality. 2004. *Art Deco*. Durban: City Architects.
- eThekweni Municipality. 2004. *Revised Integrated Development Plan 2003-2007*. Durban: eThekweni Municipality.

Interviews

- Beukes, P. Interviewed on 22 March 2005.
- Dedekind, P. Interviewed on 23 March 2005.
- Harber, R. Interviewed on 22 March 2005.
- Rasmuss, H. Interviewed on 6 April 2005.
- Kohler, P. 5 September 2005.
- Wood, E. Interviewed on 29 July 2005.

Websites

- www.durban.gov.za/ethekwini/tourism accessed 03.04.2005
- www.durban.kzn.org.za/durban/ accessed 04.07.2005
- www.earthisland.org accessed 04.07.2005
- www.jorislaarman.com accessed 20.06.2005
- www.sciencedirect.com accessed 04.07.2005

