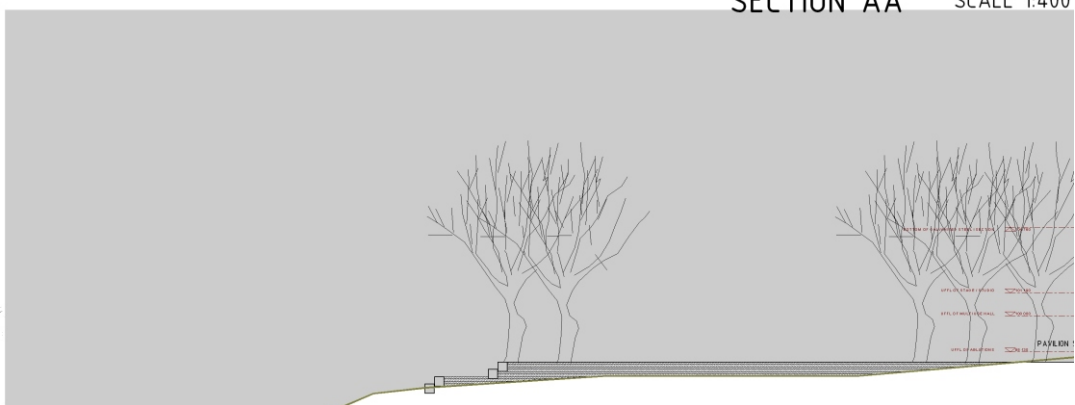


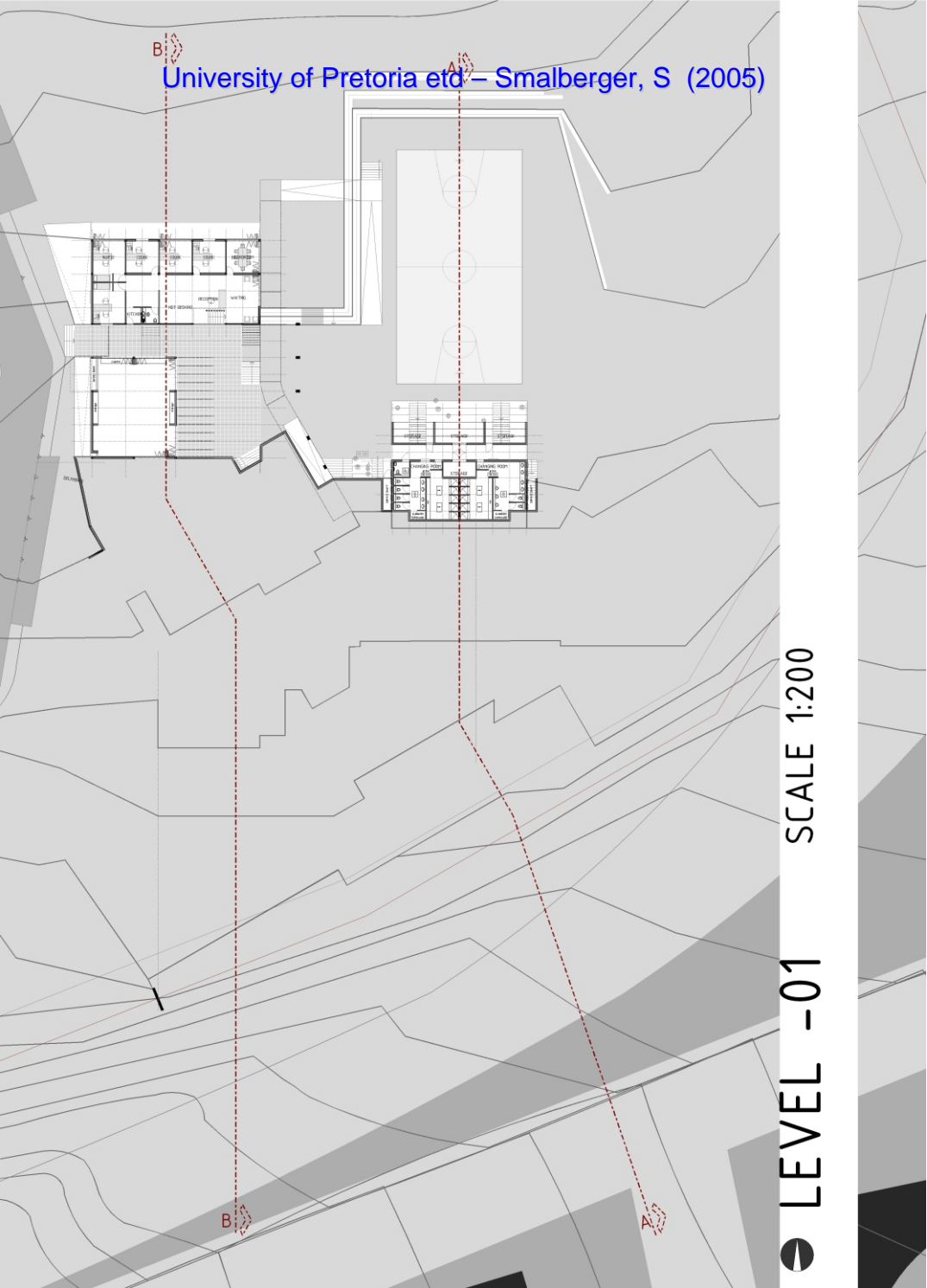
● SITE PLAN SCALE 1:500



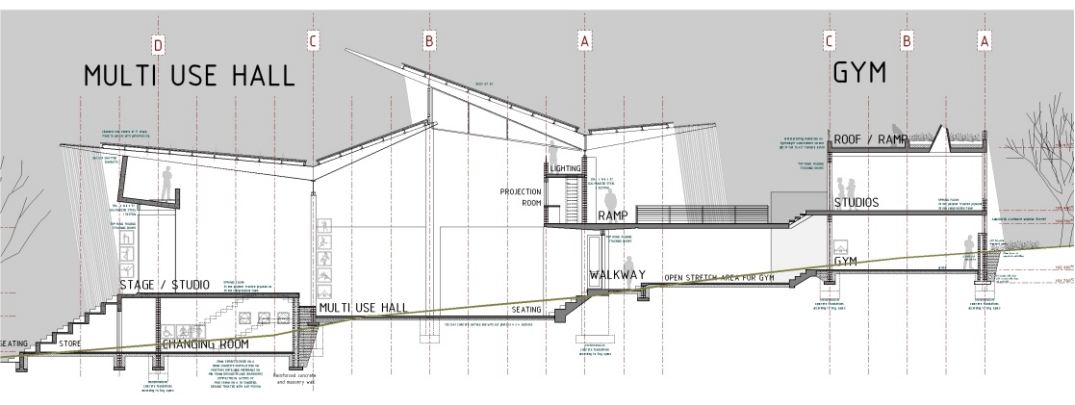
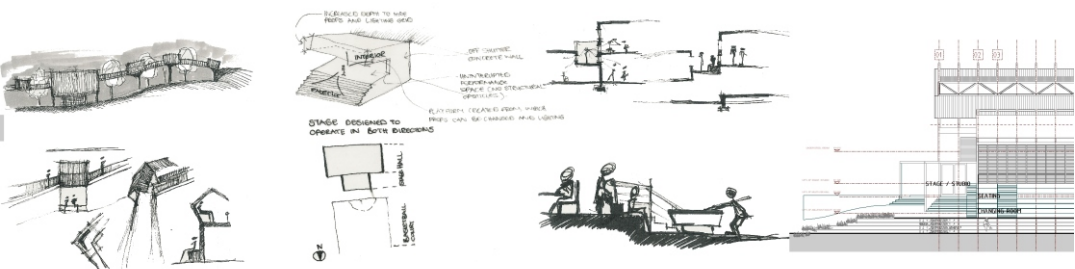
SECTION AA SCALE 1:400

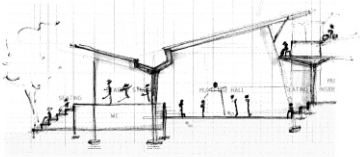
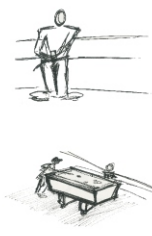
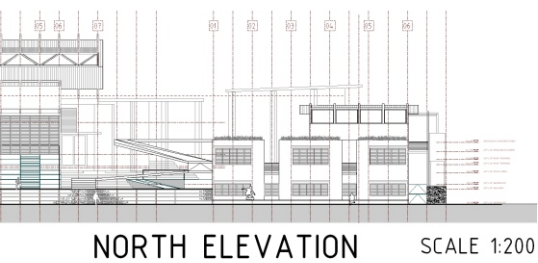
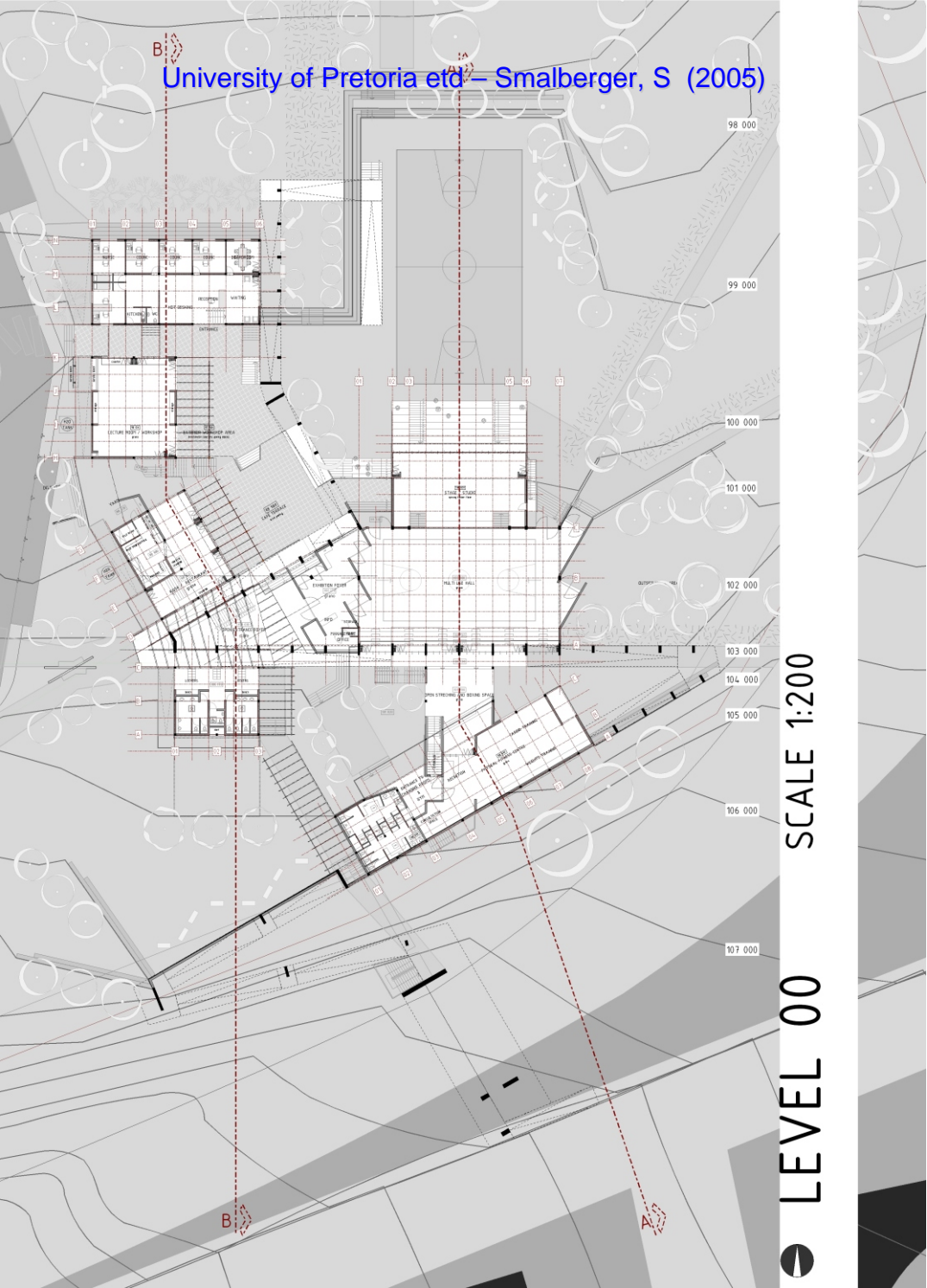


University of Pretoria etd – Smalberger, S (2005)



LEVEL -01 SCALE 1:200



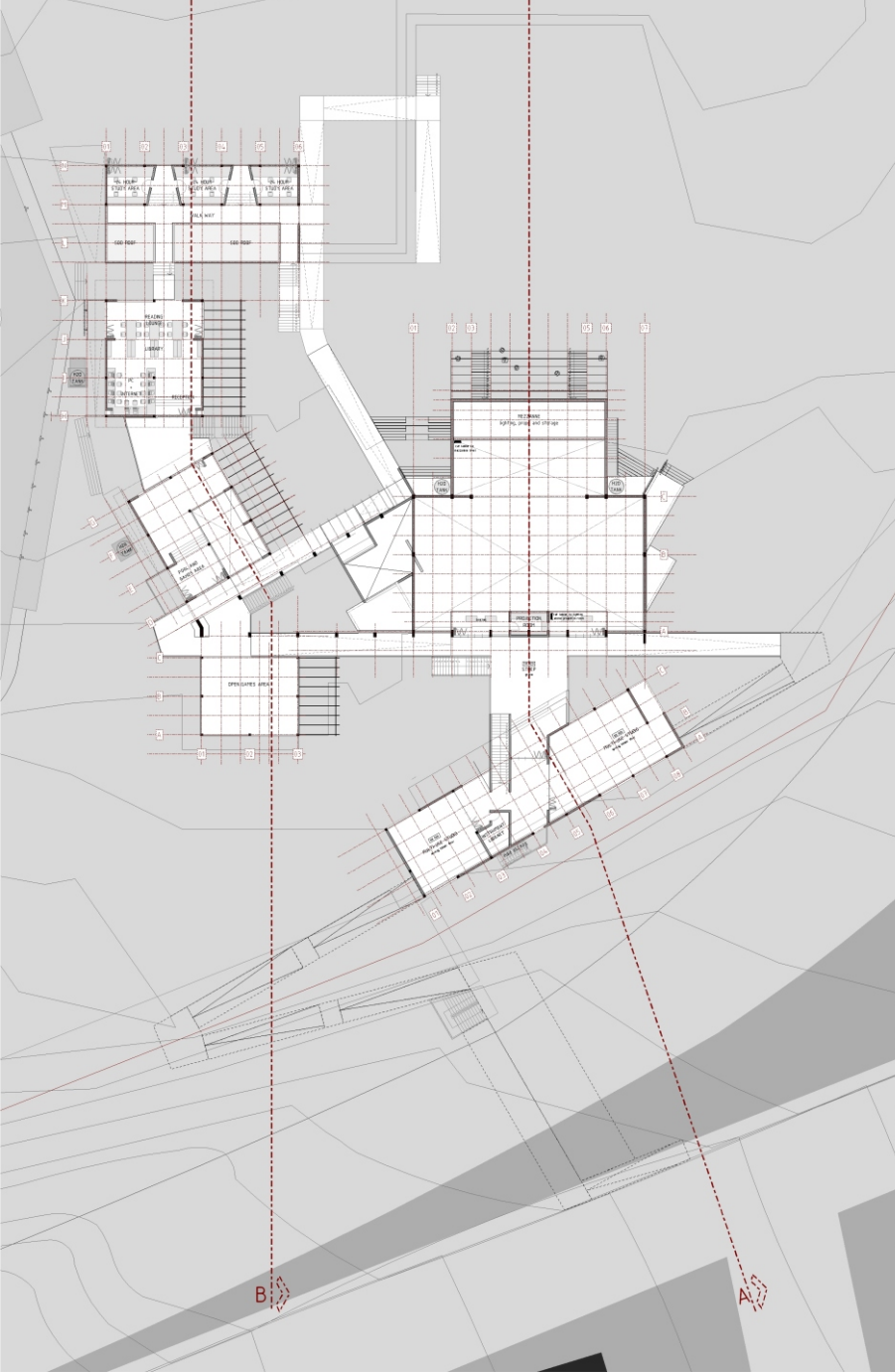


LOUIS BOTHA DRIVE

HOUGHTON DRIVE



University of Pretoria etd – Smalberger, S (2005)



SCALE 1:200

LEVEL 01



RESOURCE CENTRE

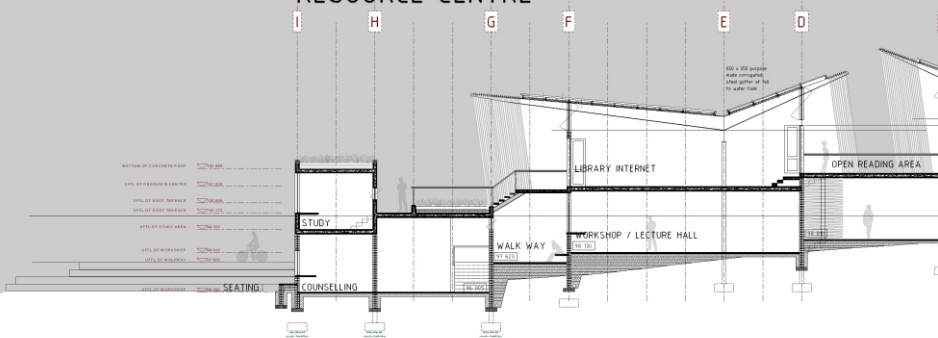
ENTERTAINMENT



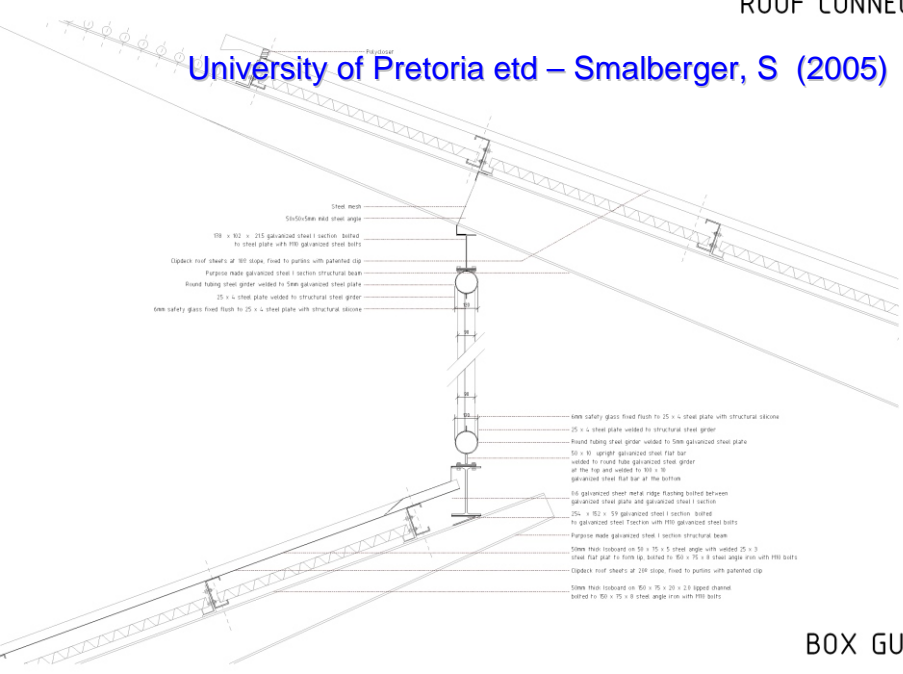
WEST ELEVATION

SCALE 1:200

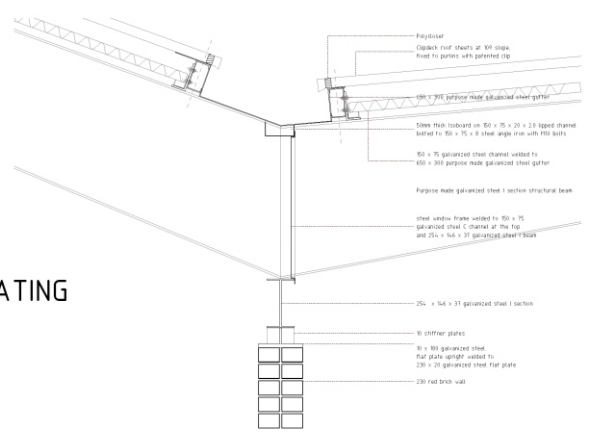
RESOURCE CENTRE



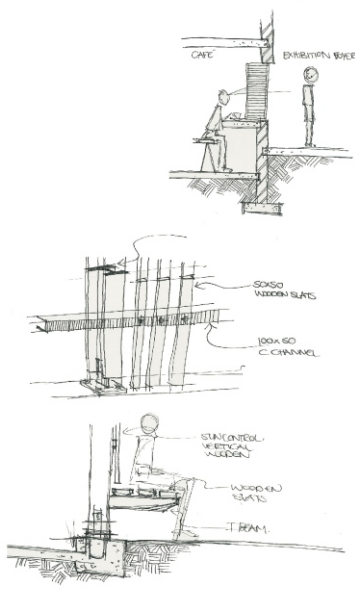
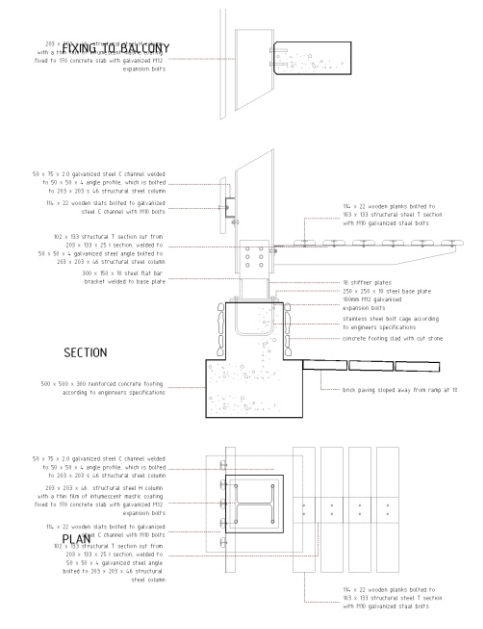
University of Pretoria etd – Smalberger, S (2005)



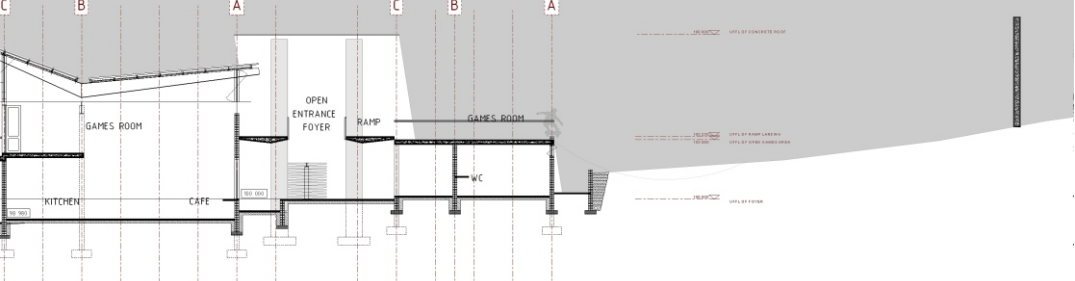
BOX GUTTER DETAIL
scale 1 : 10



DETAIL OF SUNSCREEN AND SEATING
scale 1 : 10



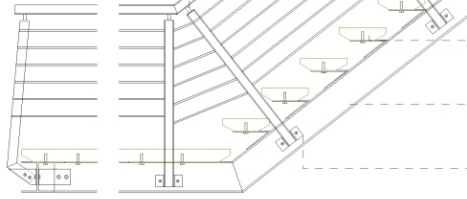
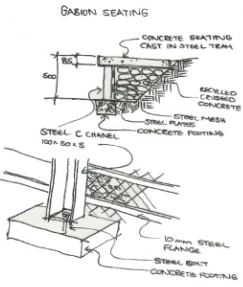
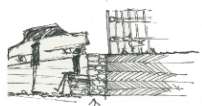
ENTERTAINMENT



SECTION BB SCALE 1:100

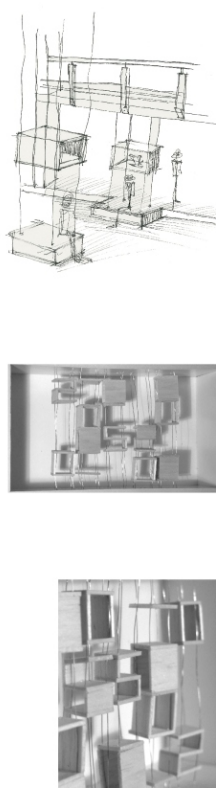
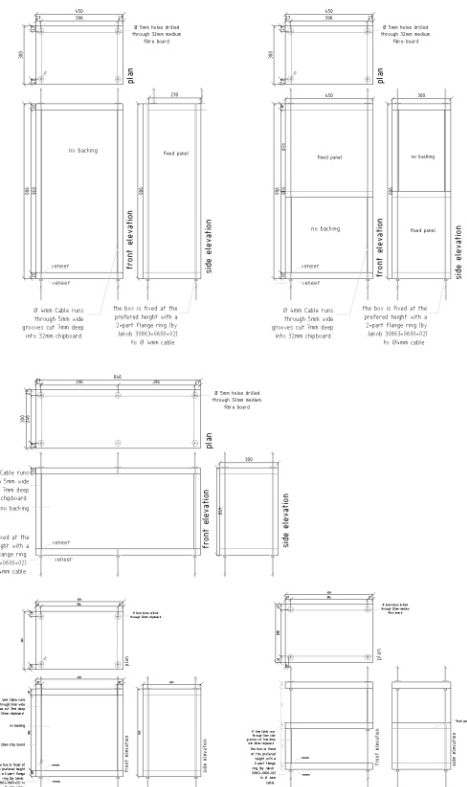
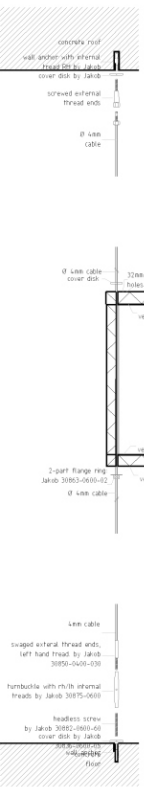
GABION SEATING CONCEPT DETAIL

STEEL STAIRCASE DETAIL scale 1 : 10 University of Pretoria etd – Smalberger, S (2005)

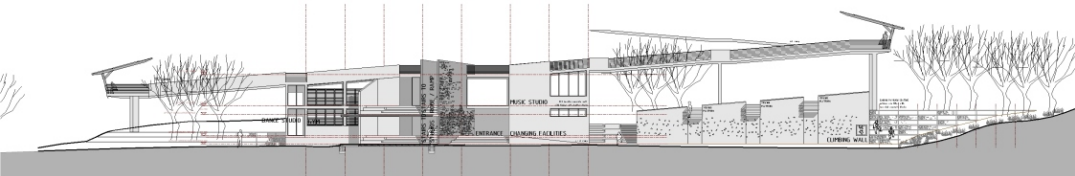


- 120 x 60 x 5mm Rectangular hollow section cut along the length to form 60x60x5mm channel section handrails
- 60 x 10mm thick galvanised mild steel flat plate
- 120 x 60 x 5mm Rectangular hollow section cut along the length to form 60x60x5mm channel section stanchions
- 30 diam post connectors pin welded to top rail
- 1430 x 300 x 80 prefabricated pigmented reinforced concrete tread bolted onto steel profile which is welded to 203 x 133 x 30 Structural I beam
- welded 203x133x30 I-beam galvanised steel frame
- 60 x 60 x 5 galvanised C channel hollow section cut along the length to form 60x60x5mm channel section stanchions
- 30 diam post connectors pin welded to top rail
- 1430 x 300 x 80 prefabricated pigmented reinforced concrete tread bolted onto steel profile which is welded to 203 x 133 x 30 Structural I beam
- welded 203x133x30 I-beam galvanised steel frame
- 60 x 60 x 5 galvanised C channel hollow section cut along the length to form 60x60x5mm channel section stanchions
- 30 diam post connectors pin welded to top rail
- 1430 x 300 x 80 prefabricated pigmented reinforced concrete tread bolted onto steel profile which is welded to 203 x 133 x 30 Structural I beam
- welded 203x133x30 I-beam galvanised steel frame
- 60 x 60 x 5 galvanised C channel hollow section cut along the length to form 60x60x5mm channel section stanchions
- 30 diam post connectors pin welded to top rail
- 1430 x 300 x 80 prefabricated pigmented reinforced concrete tread bolted onto steel profile which is welded to 203 x 133 x 30 Structural I beam
- welded 203x133x30 I-beam galvanised steel frame
- 60 x 60 x 5 galvanised C channel hollow section cut along the length to form 60x60x5mm channel section stanchions
- 30 diam post connectors pin welded to top rail
- 1430 x 300 x 80 prefabricated pigmented reinforced concrete tread bolted onto steel profile which is welded to 203 x 133 x 30 Structural I beam
- welded 203x133x30 I-beam galvanised steel frame

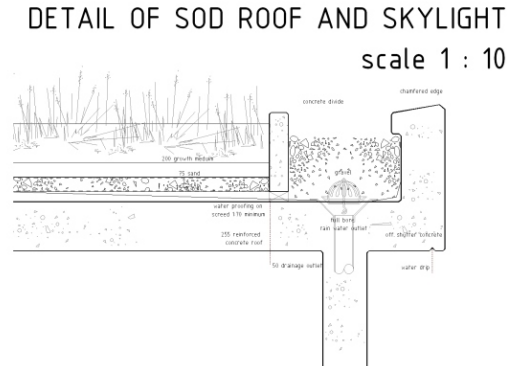
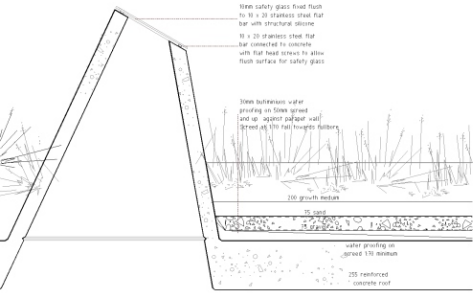
DETAILING AND FIXING OF HEIGHT ADJUSTABLE EXHIBITION BOXES IN EXHIBITION FOYER scale 1:10



scale 1 : 5

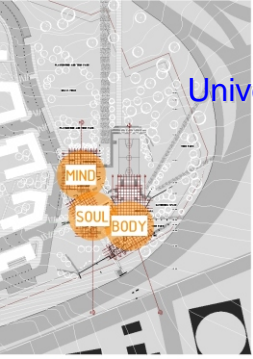


NORTH ELEVATION OF PHYSICAL FITNESS CENTRE SCALE 1:200

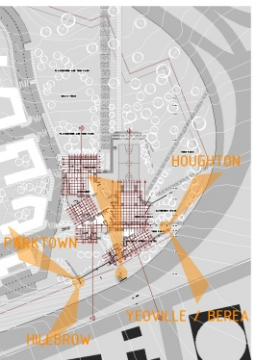
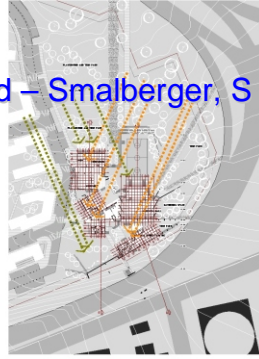


DETAIL OF SOD ROOF AND SKYLIGHT scale 1 : 10

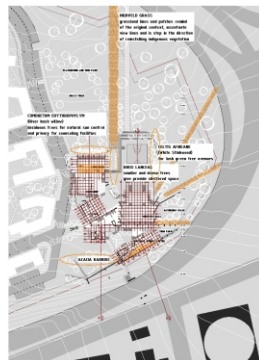
University of Pretoria etd – Smalberger, S (2005)



VENTILATION
BUILDINGS OPEN UP TOWARDS
PARKS TO THE NORTH EASTERN
QUADRANT AND BLOCK COLD
DRY WINDS TO THE WESTERN WINTER WIND

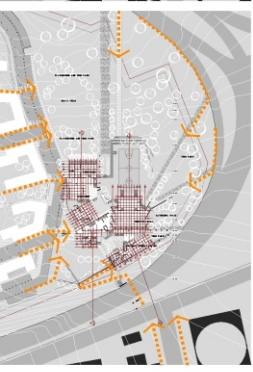


VIEW LINES FROM VIEWING PLATFORMS OF THE SURROUNDING CONTEXT



VEGETATION
OPEN SPACE

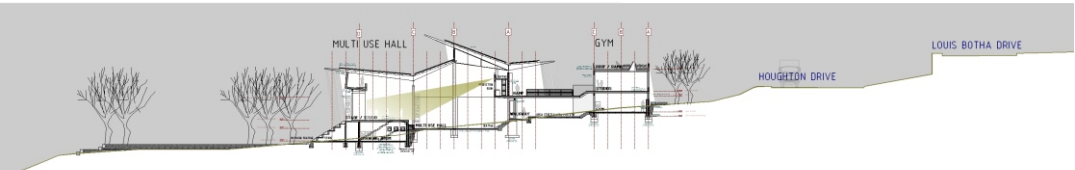
- ACCESSIBLE PARKS
- CONTROLLED ACCESS
- PARKS
- OPEN SPACE
- SPORTS FIELDS
- INACCESSIBLE OPEN SPACE



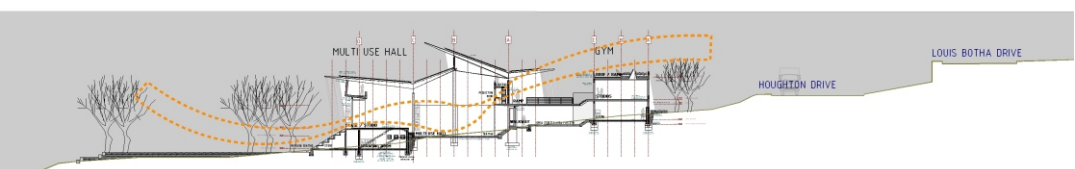
PEDESTRIAN LINKAGES TO THE PARK FROM SURROUNDING CONTEXT



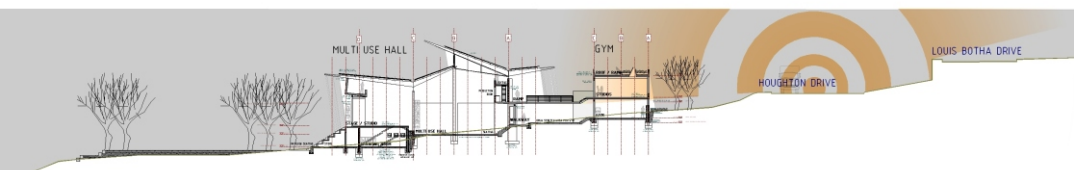
STORM WATER MANAGEMENT AND WATER HARVESTING



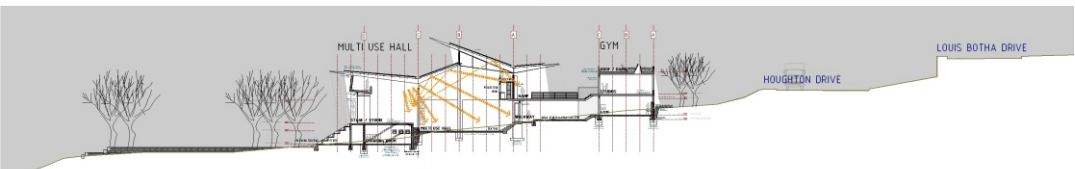
LIGHTING



VENTILATION

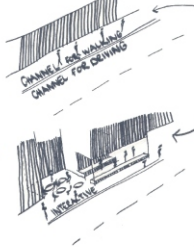


ROAD ATTENUATION



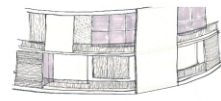
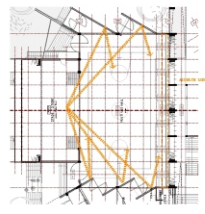
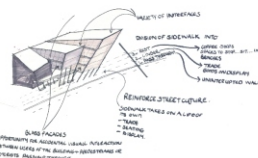
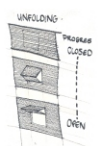
ACOUSTICS

ACCIDENTAL INTERACTION



NO OPPORTUNITY FOR ACCIDENTAL INTERACTION WITH - PEOPLE - GOODS

INTERACTION.



MIX OF FIXED AND MOVABLE PANELS ON THE ROOF OR RECESSED. CREATES FLEXIBLE OUTSIDE SPACES

