



ARC-ISCW
178kg 2/78
Pretoria
0001
Contact: LC Klemmner
Tel: (012) 310 2590

600 Belvedere Str
Arcadia
Pretoria

Zoar Wetland - DuncanTech (1e colour) Imagery

Image acquisition date: 09/06/2003
Resolution: 0.25 m



Legend

- 1-7 Rehabilitation structures
- Direction of water flow

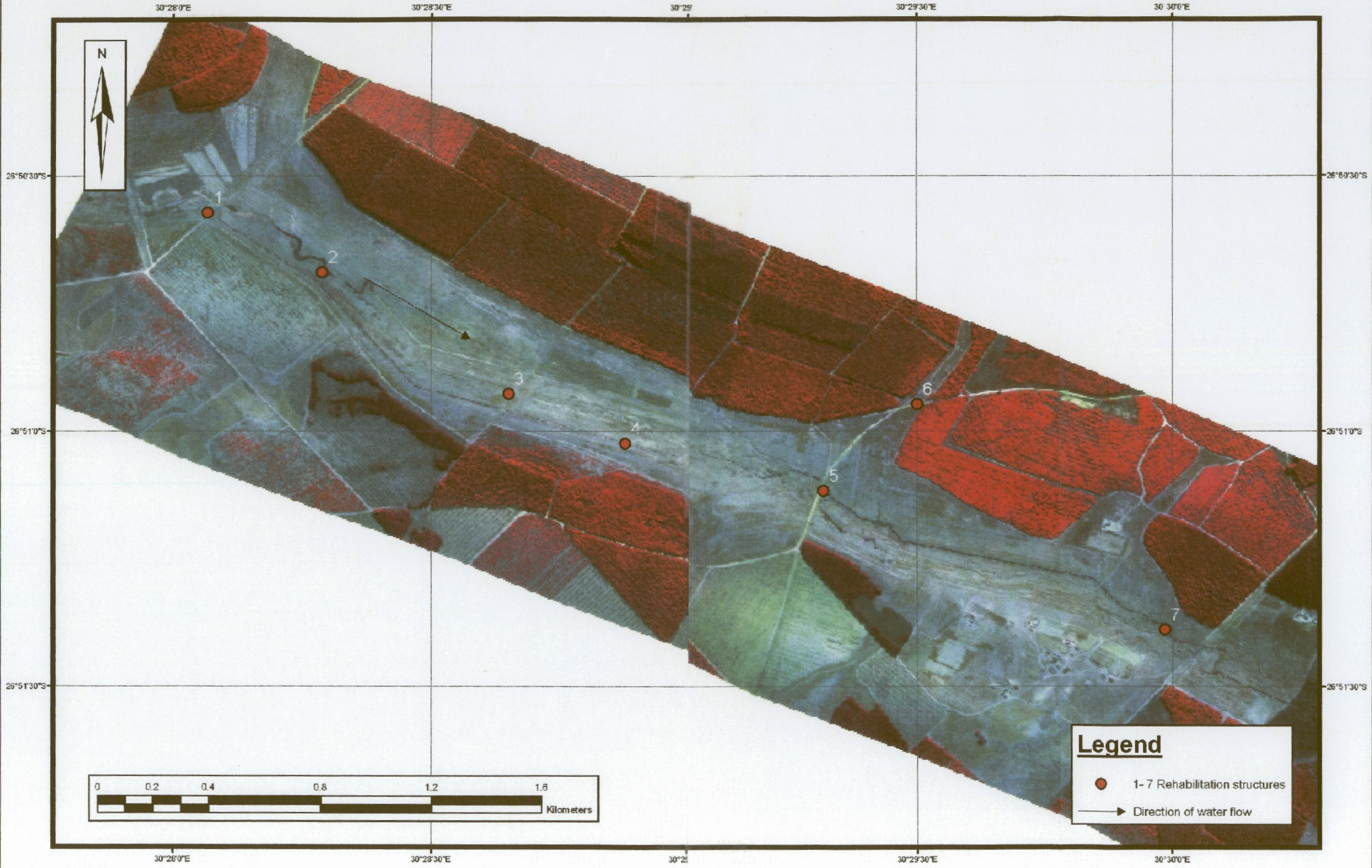


ARC-ISO
P/Bag 279
Pretoria
0001
Contact: L. Kaempffer
Tel: (012) 510 2500

900 Salvedere Str
Arcadia
Pretoria

Zoar Wetland - DuncanTech (Coir InfraRed) Imagery

Image acquisition date: 09/06/2003
Resolution: 0.25 m



Legend

- 1-7 Rehabilitation structures
- Direction of water flow

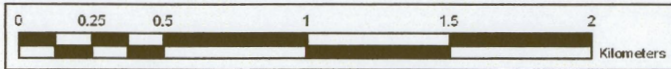
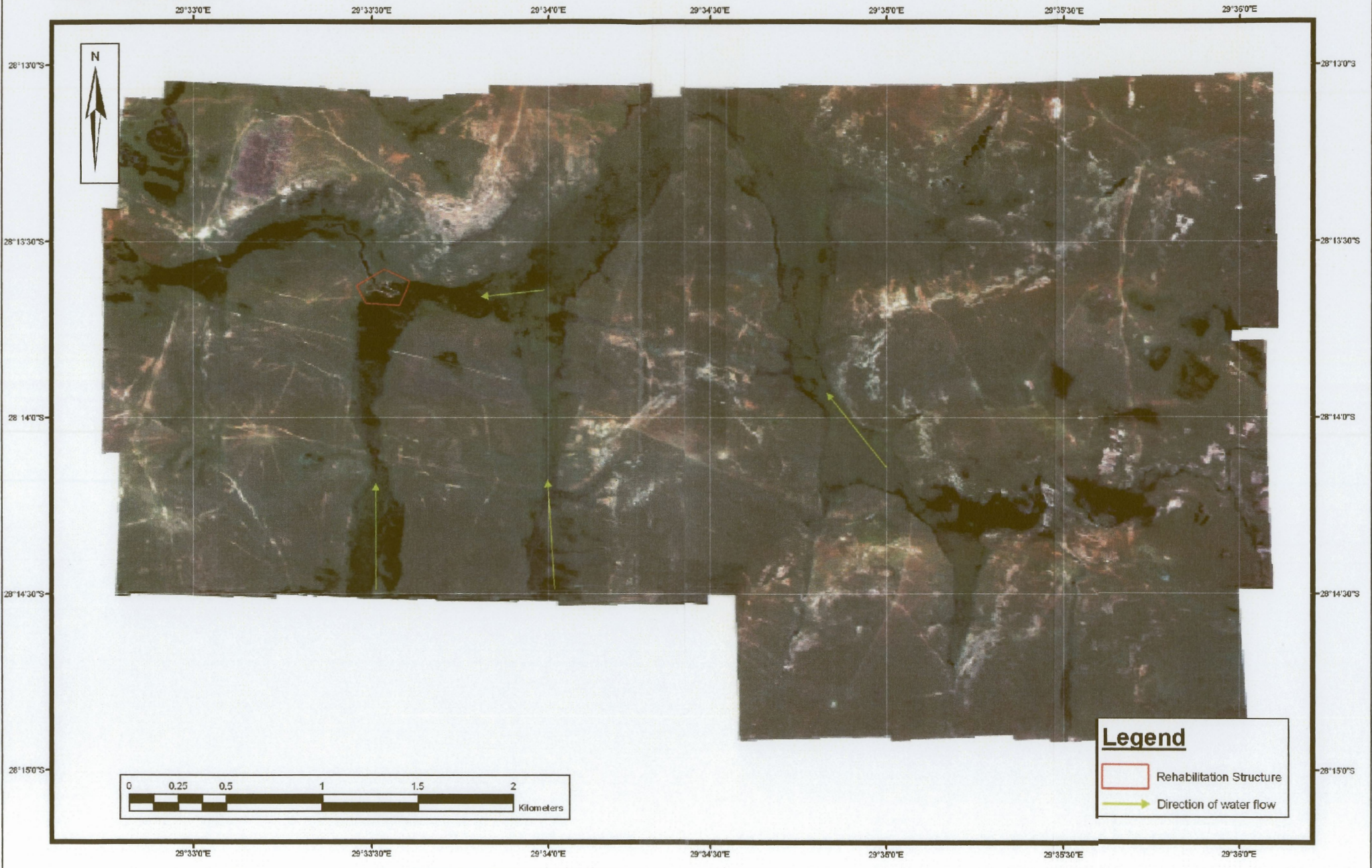


ARC-193W
P.O. Box 120
Pretoria
0001
Contact: LC Kaeppfer
Tel: (012) 210 2560

600 Gahwedere Str
Arcadia
Pretoria

Wilge River Wetland - Duncarfech (True colour) Imagery

Image acquisition date: 08/04/2003
Resolution: 0.5 m



Legend

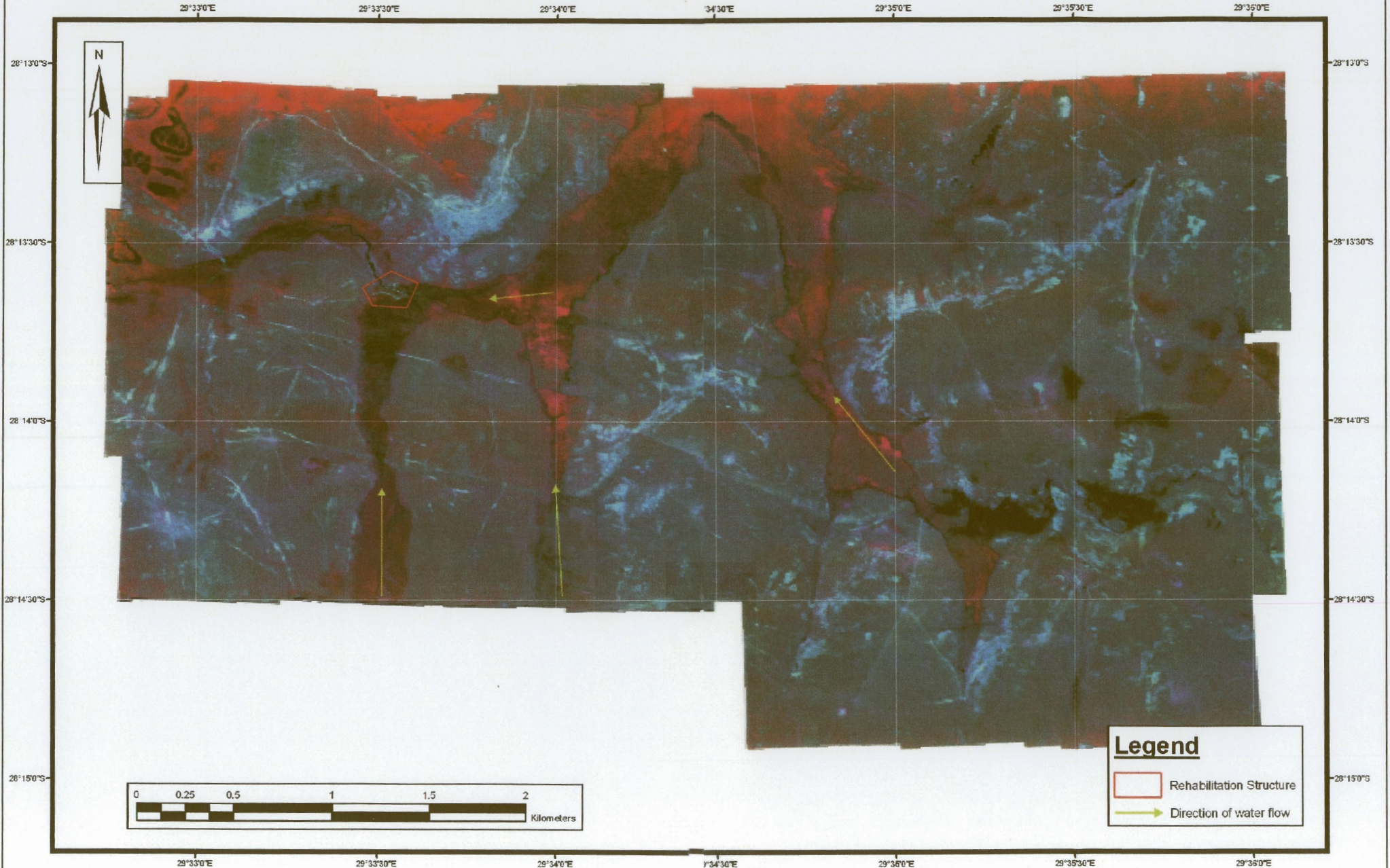
- Rehabilitation Structure
- Direction of water flow



ARC-RCM
P/Bag X79
Pretoria
0007
Contact: LC Kaepffer
Tel: (012) 310 2560

Wilge River Wetland - Duncan Ter (Colour InfraRed) Imagery

Image acquisition date: 08/04/2003
Resolution: 0.5 m





Rietvlei Wetland - DuncanTech (True colour) Imagery

Image acquisition date: 09/06/2003
Resolution: 0.5 m

