

APPENDIX 6

DIFFERENT REMOTE SENSOR IMAGERY FOR THE WETLANDS STUDY AREAS (A3 SIZE MAPS).

- Kromme River Wetland SPOT 5.
Kodak DCS 420 (Near Infrared (NIR))
- Mbongolwane Wetland DuncanTech
(True colour & colour Infrared (CIR))

EROS
- Seekoeivlei Wetland EROS
- Wilge River Wetland DuncanTech
(True colour & colour Infrared (CIR))
- Zoar Wetland DuncanTech
(True colour & colour Infrared (CIR))
- Rietvlei Wetland DuncanTech
(True colour & colour Infrared (CIR))

REMOTE SENSING IMAGERY FOR THE WETLAND STUDY AREAS ARE AVAILABLE IN Erdas.img format (Zip files) CD 1, CD 2, CD 3 and CD 4.

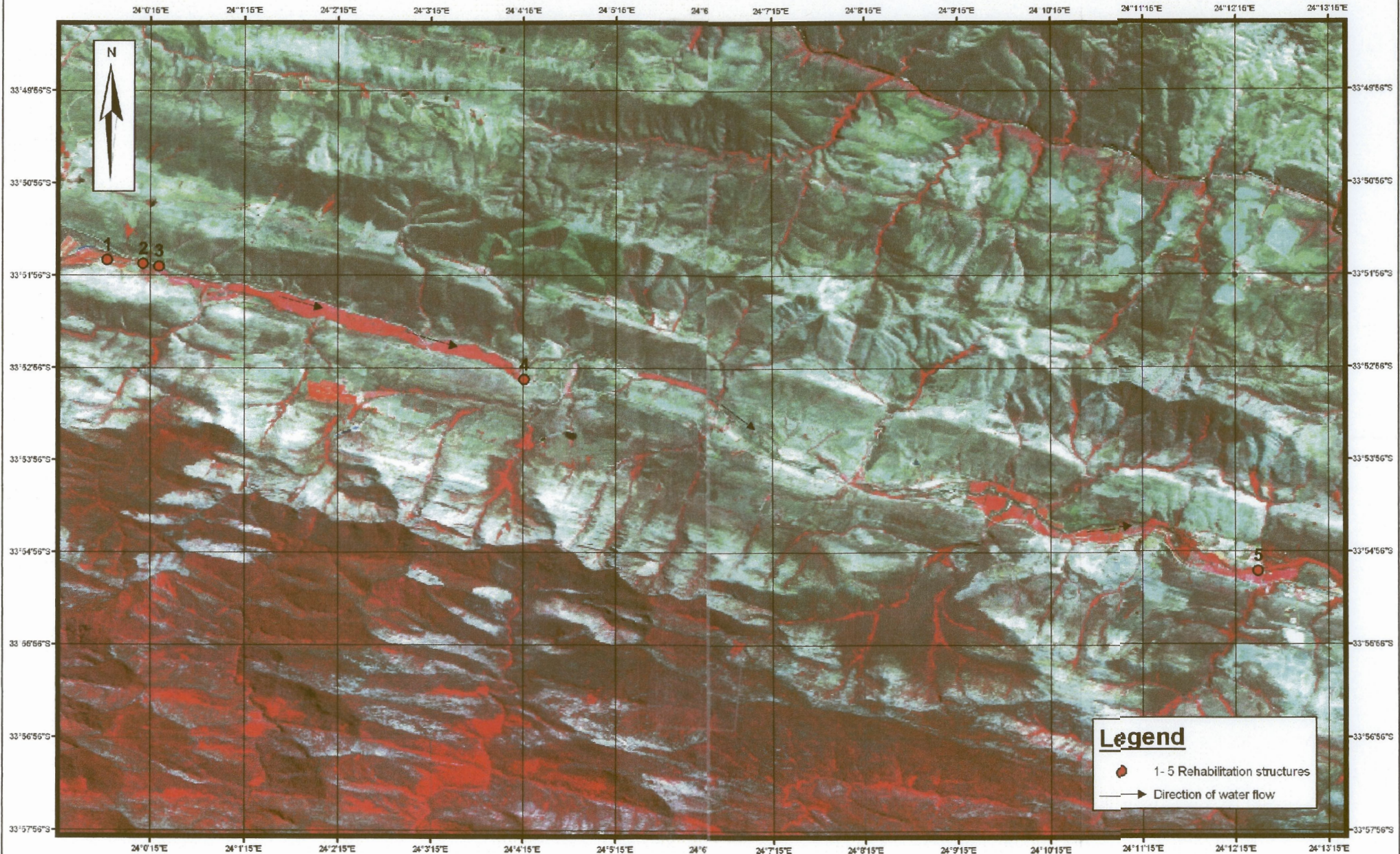


ARC-ISON
73ag X79
Pretoria
0001
Contact: LC Kaempfer
Tel: (012) 510 2660

600 Belvedere Str
Arcadia
Pretoria

Kromme River Wetland - Spot (Ise colour infrared) Imagery

Image acquisition date: 10/02/2003
Resolution: 10 m

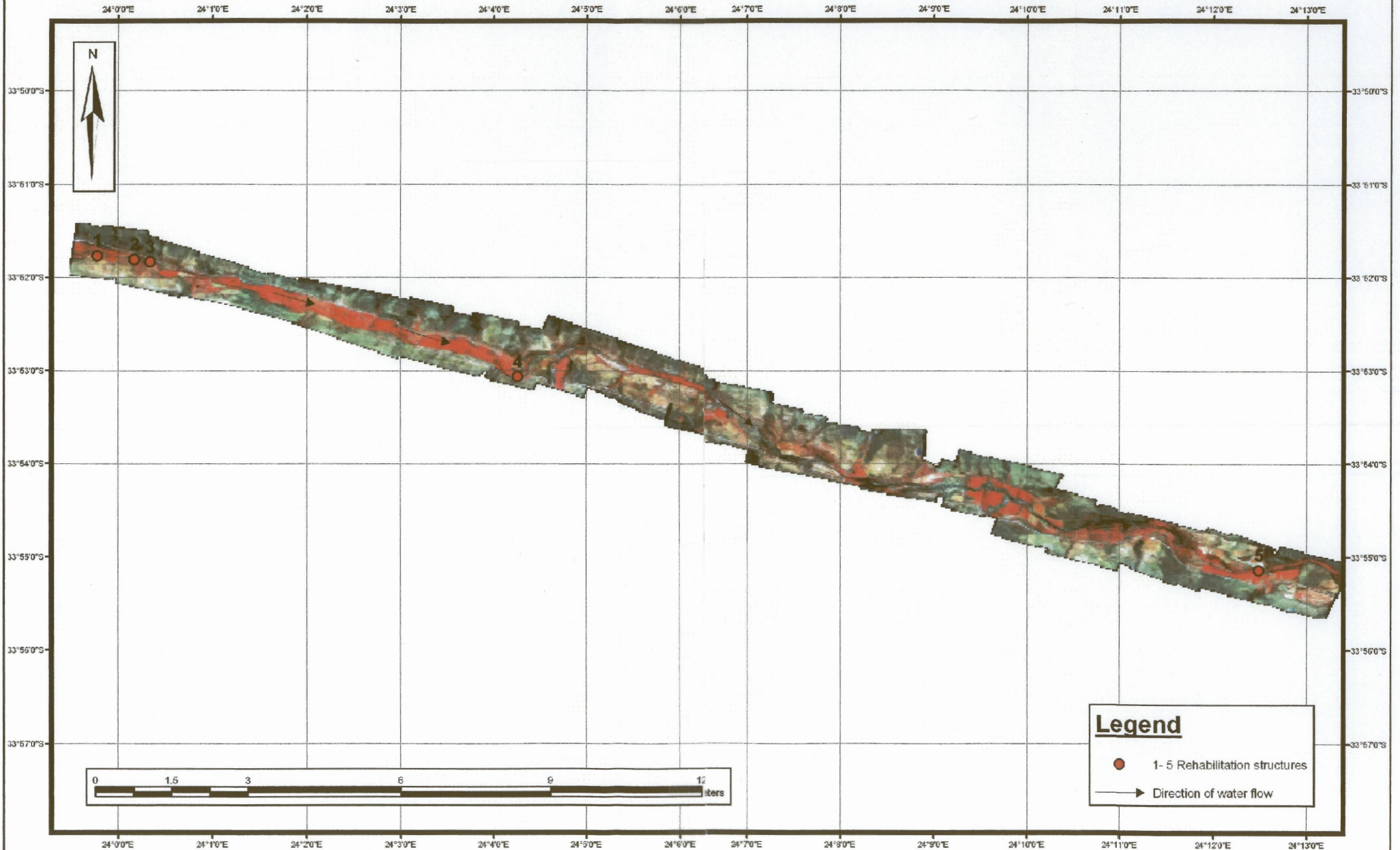




ARC-ESOM
P/Bag X79
Pretoria
0001
Contact: ...C Kaempfer
Tel: (012) 310 2530

Kromme River Wetland - KodaDCS 420 (Near infrared) Imagery

Image acquisition date: 22/01/2003
Resolution: 1 m





ARC-NSCW
P/Bag 279
Pretoria
2001
Contact: LC Kaempfer
Tel: (012) 310 2900

530 Belvedere Str
Arcadia
Pretoria

Mbongolwane Wetland - DumnTech (True colour) Imagery

Image acquisition date: 09/06/2003
Resolution: 0.25 m

31°12'0"E

31°15'0"E

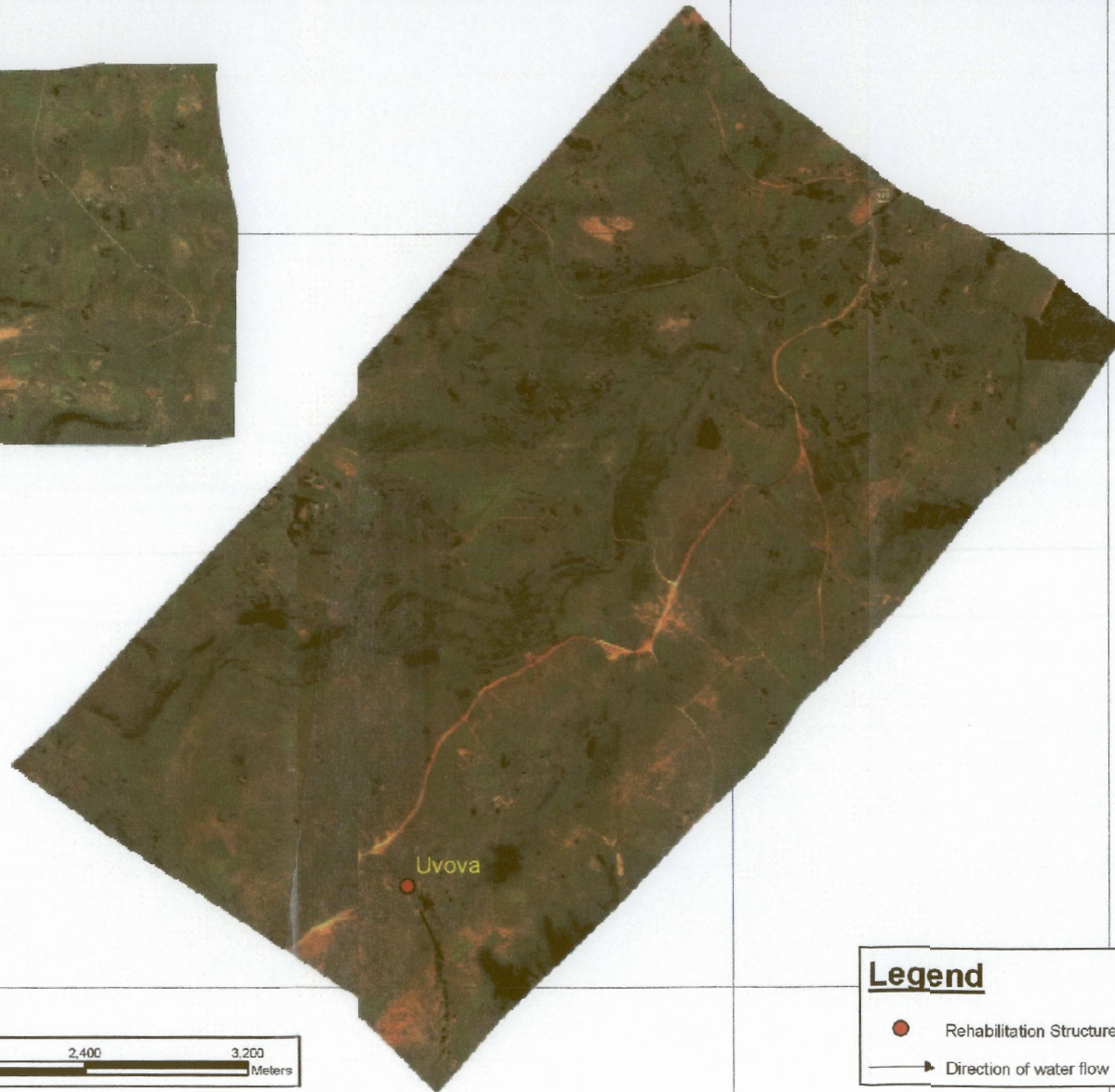
31°E

31°15'0"E

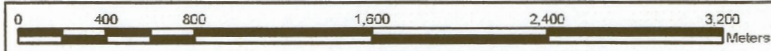
31°00'E



Amatigulu



Uvova



Legend

- Rehabilitation Structures
- Direction of water flow

31°12'0"E

31°15'0"E

31°E

31°15'0"E

31°00'E

28°55'0"S

28°55'0"S

28°55'0"S

28°55'0"S

28°57'0"S

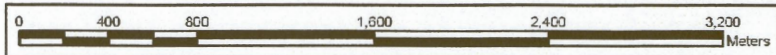
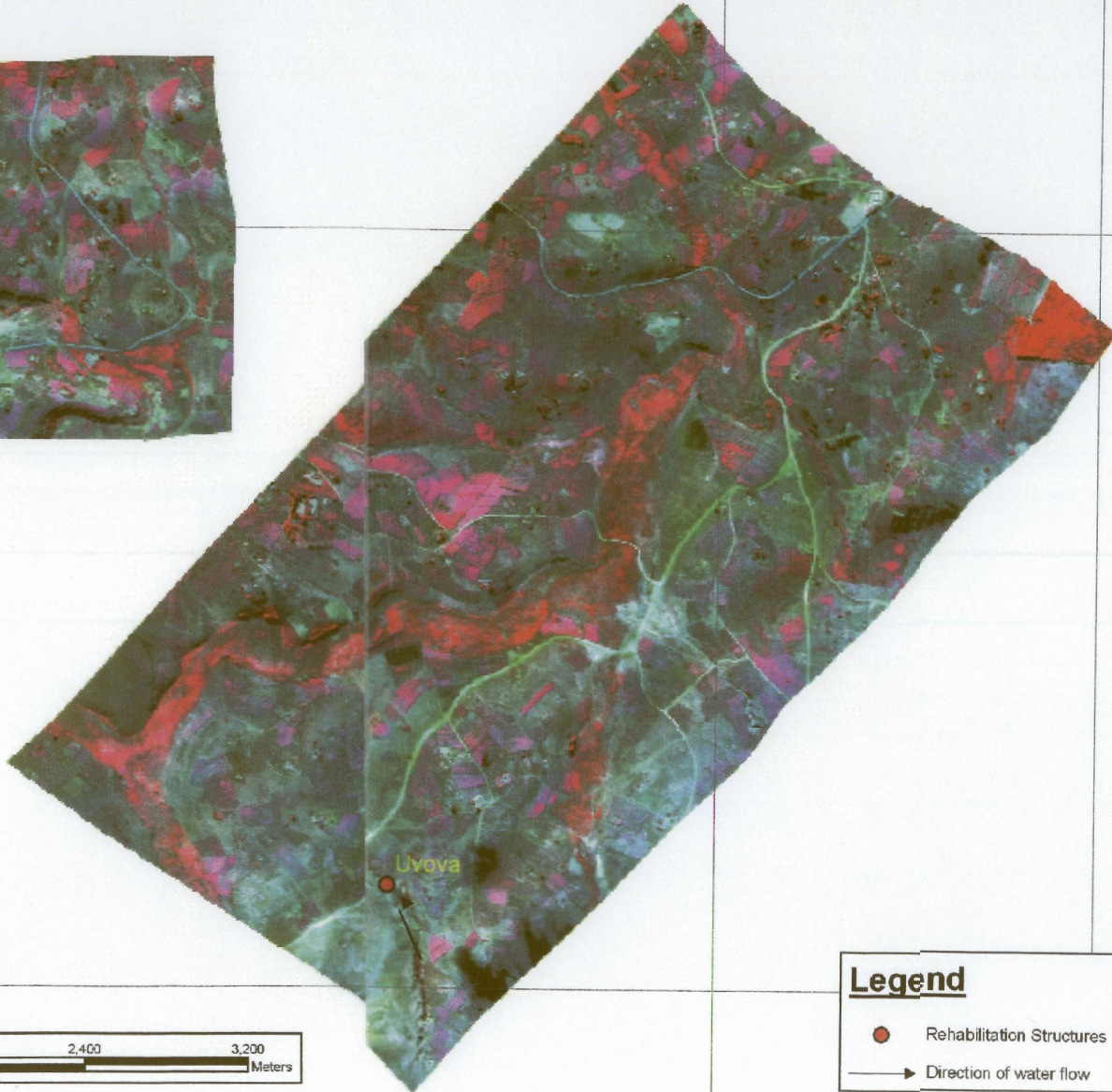
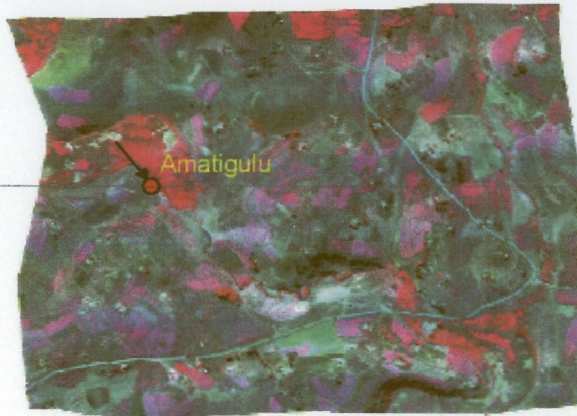
28°57'0"S



ARC-SCW
Pretoria 2001
300 Belvedere Str
Arcadia
Pretoria
Contact: LC Kaempfer
Tel: (012) 310 2590

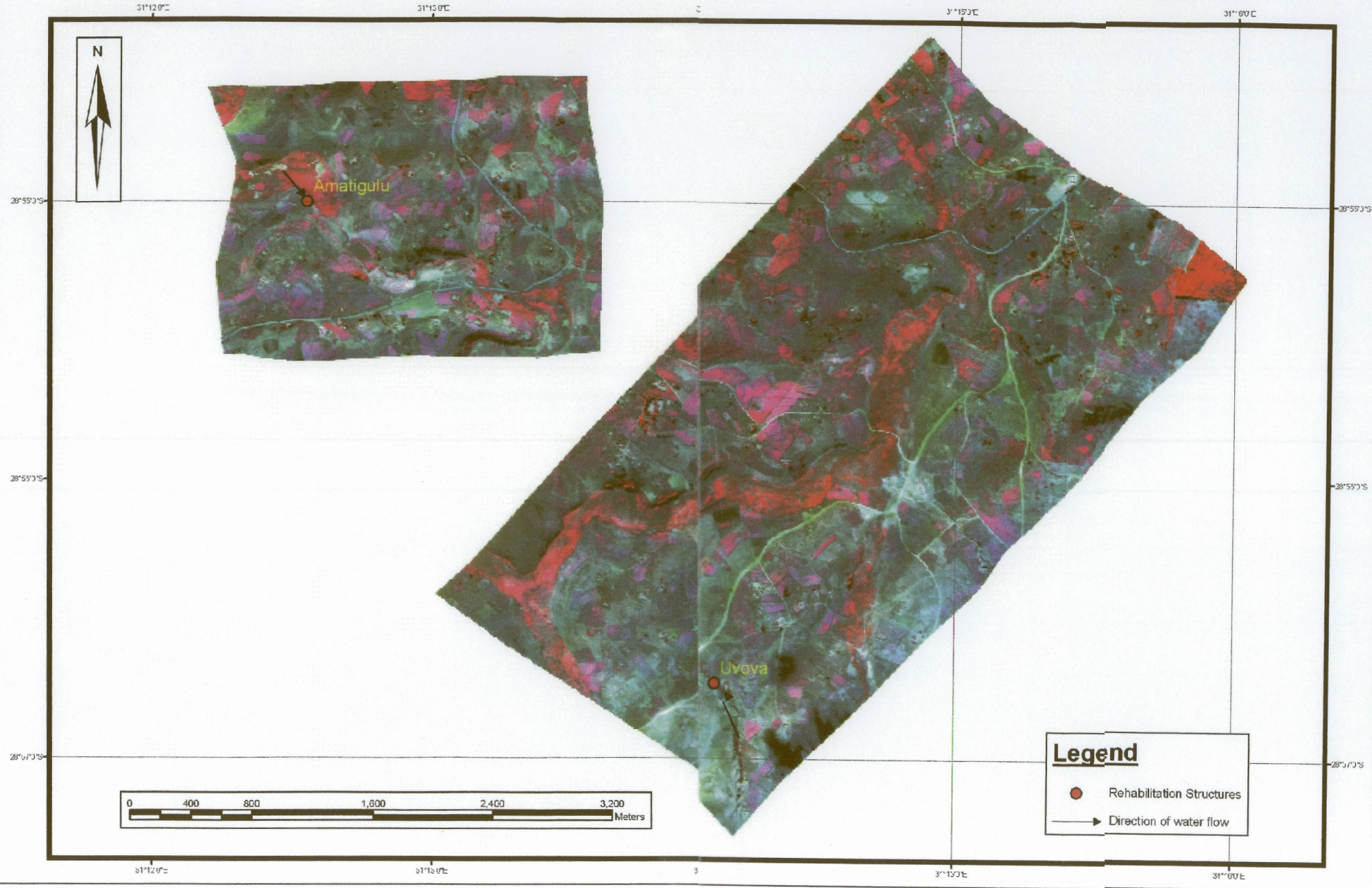
Mbongolwane Wetland - Duncaech (Colour InfraRed) Imagery

Image acquisition date: 09/06/2003
Resolution: 0.25 m



Legend

- Rehabilitation Structures
- Direction of water flow

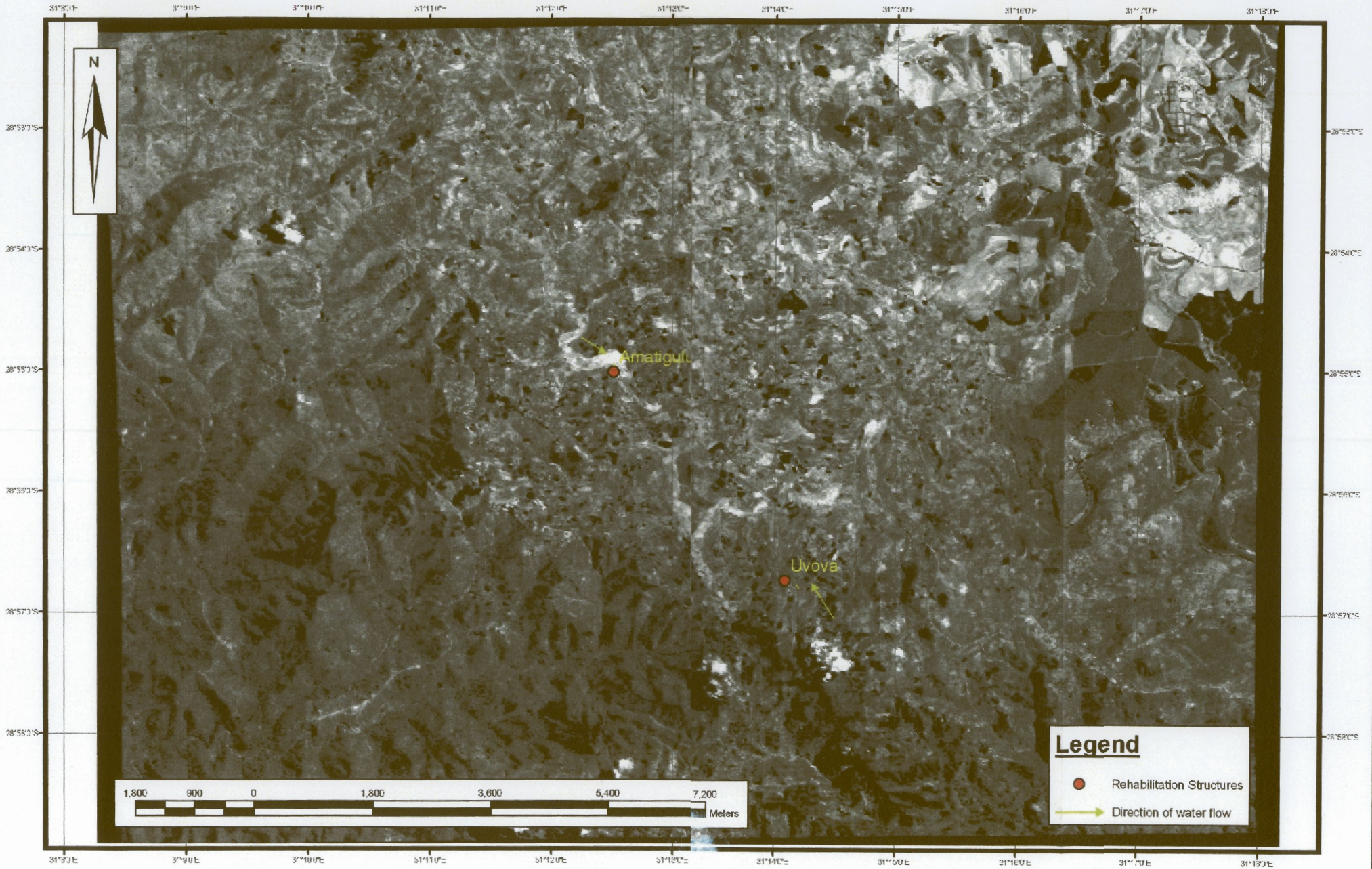




ARC-ESW
P/Bag X79
Pretoria
0001
800 Sabudera Str
Arenaria
Pretoria
Contact: LG Kasemiller
Tel: (012) 310 2580

Mbongolwane Wetland - Eros Imagery

Image acquisition date: 24/12/2002
Resolution: 1.8 m





ARC ISOW
P3ag X79
Pretoria
0001

600 DeWetere Str
Arendse
Pretoria

Contact: LC Kaempffer
Tel: (012) 310 2560

Seekoeivlei Wetland - Eros Imagery

Image acquisition date: 20/12/2003
Resolution: 1.8 m

