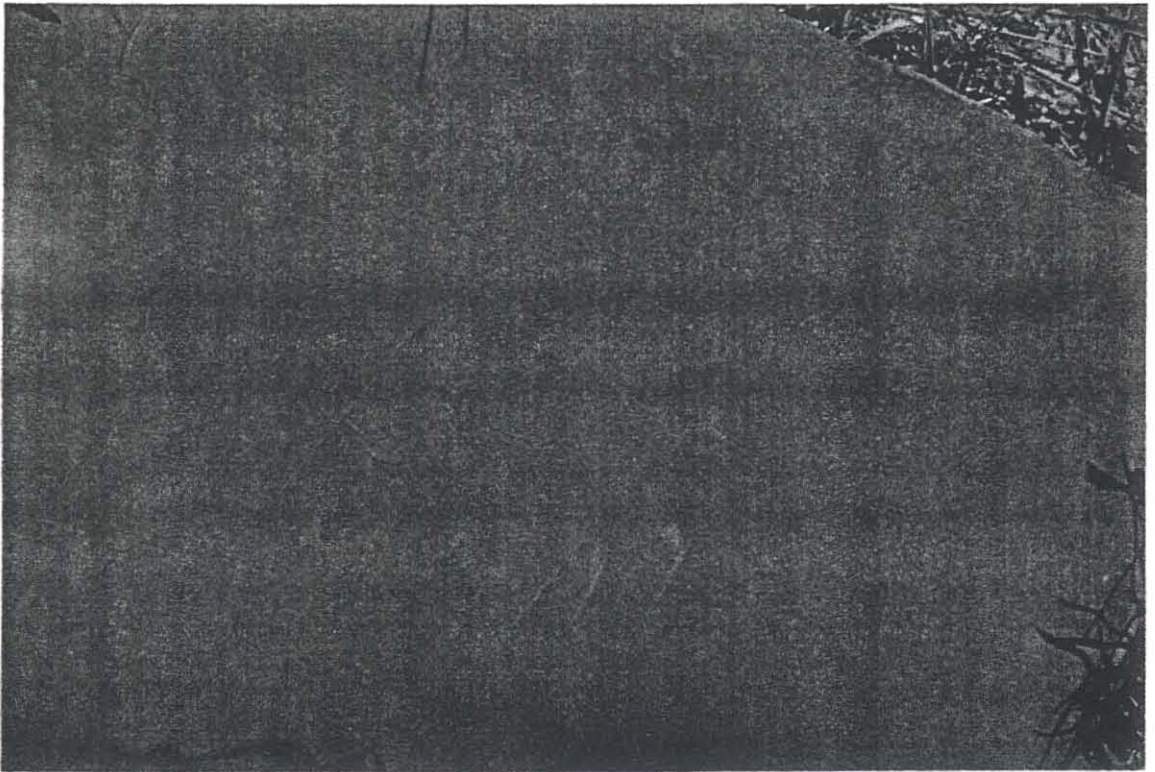




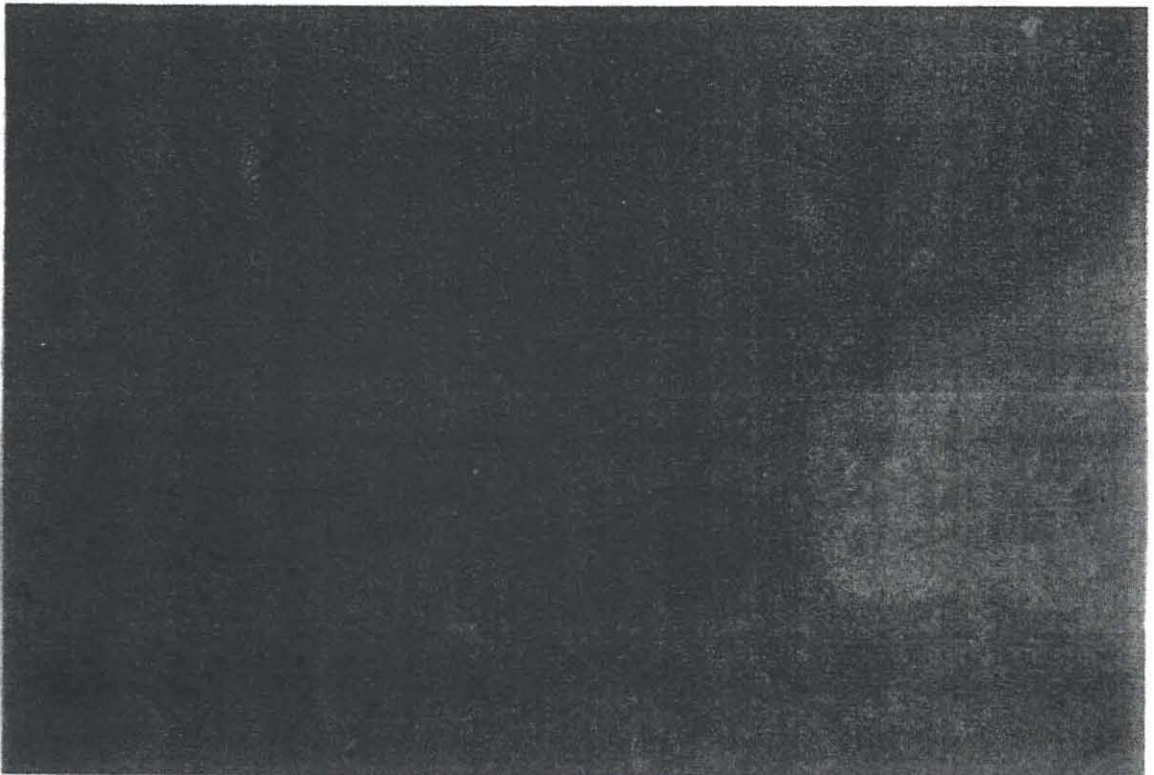
(Photo63: Figure K1- The Kudu)



(Photo64: Figure K2- The White rhinoceros)

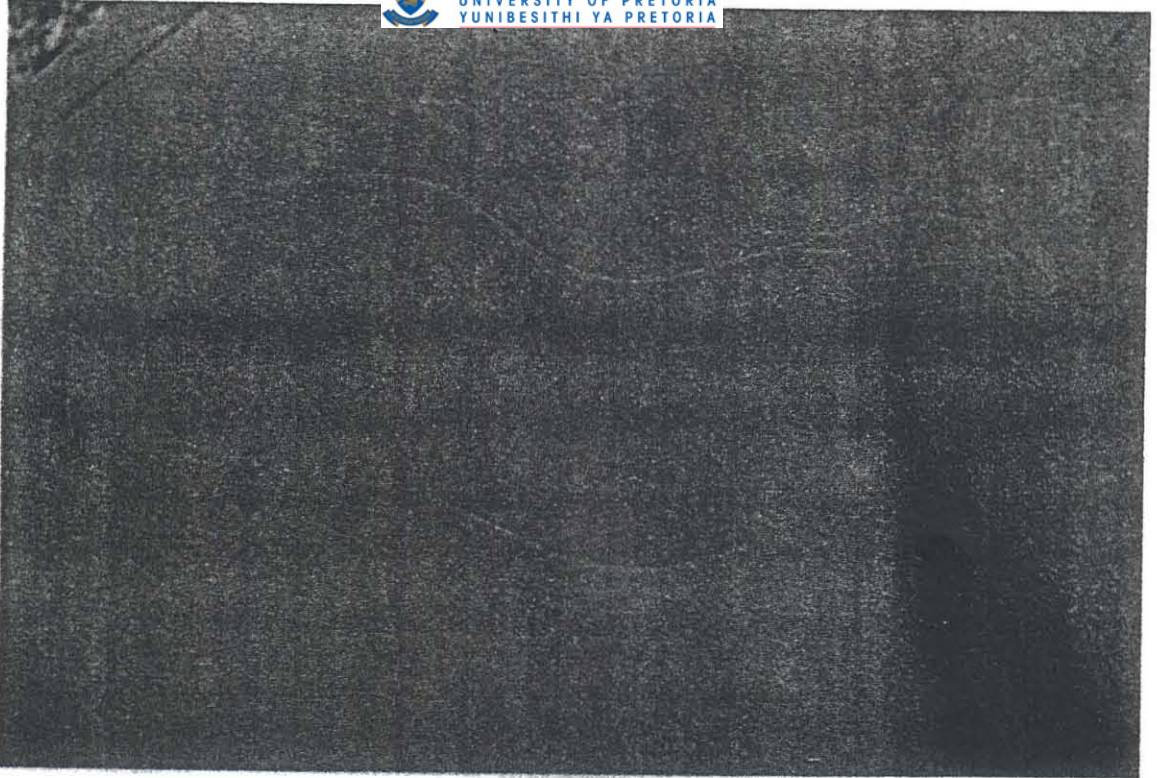


(Photo65: Figure K10- The Gemsbok)



(Photo66: FigureL4- Eland and Pattern work)

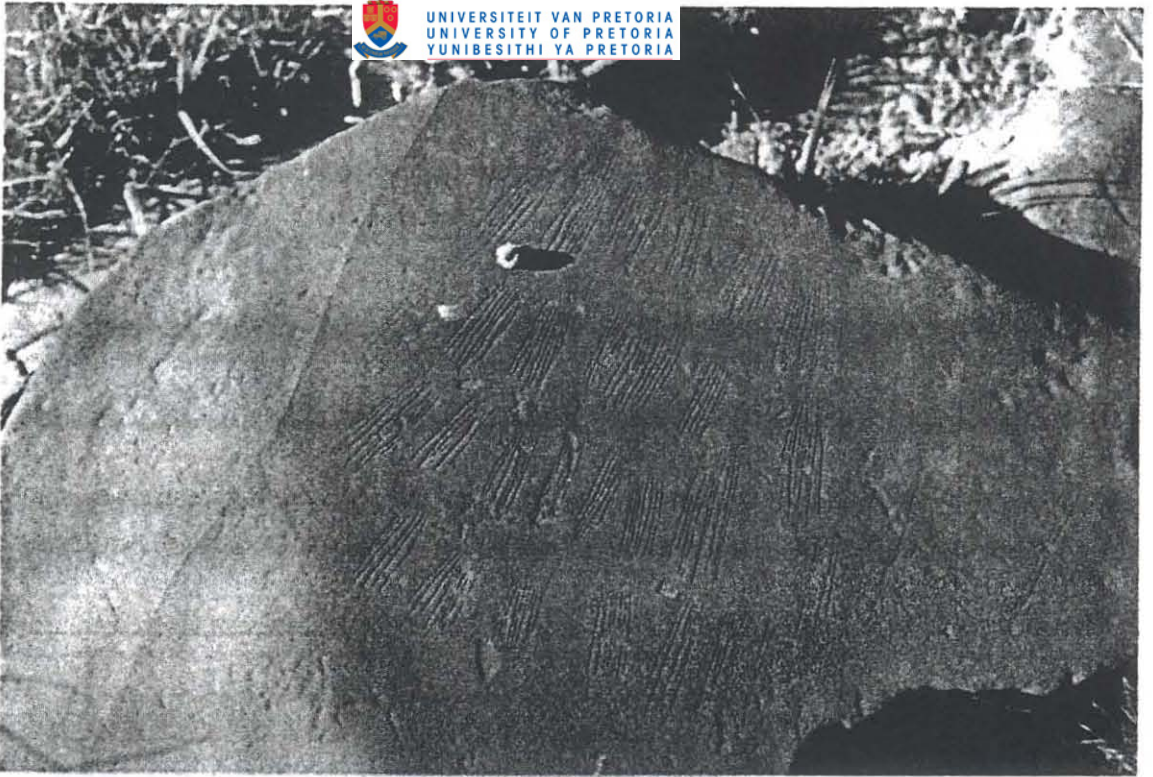




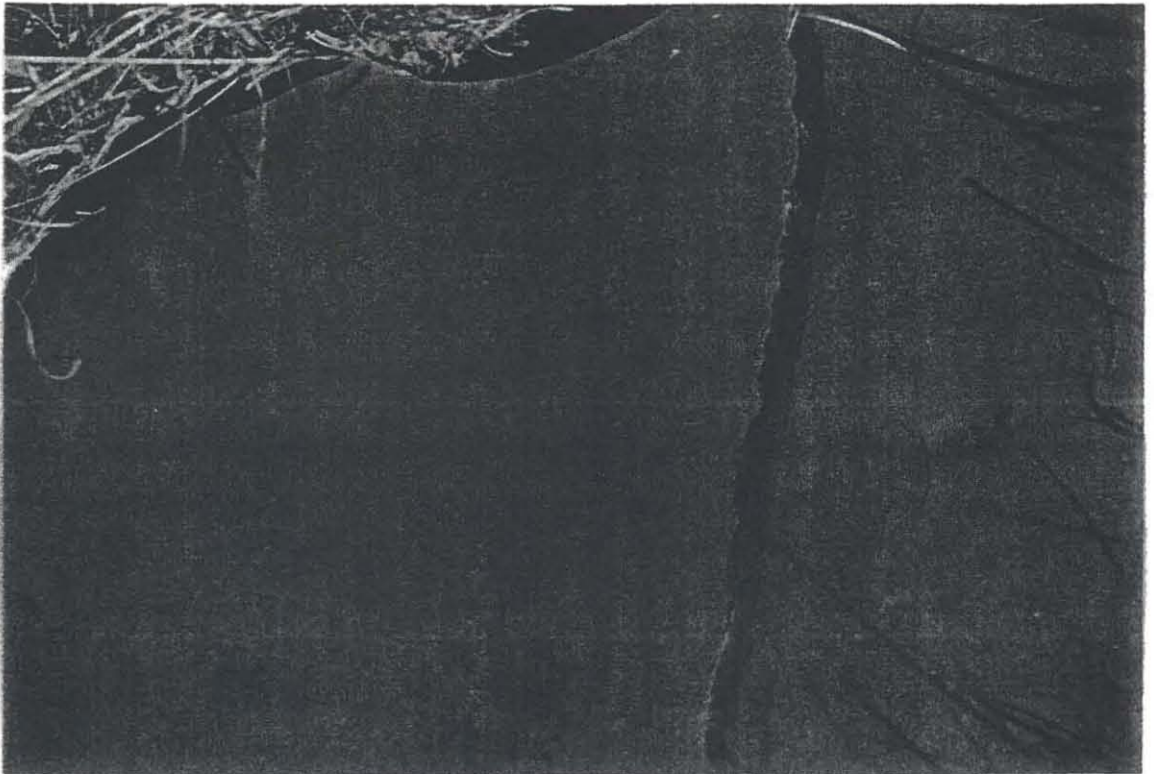
(Photo67: Figure L9- The Hippopotamus)



(Photo68: Figure L13- Eland and Calf)

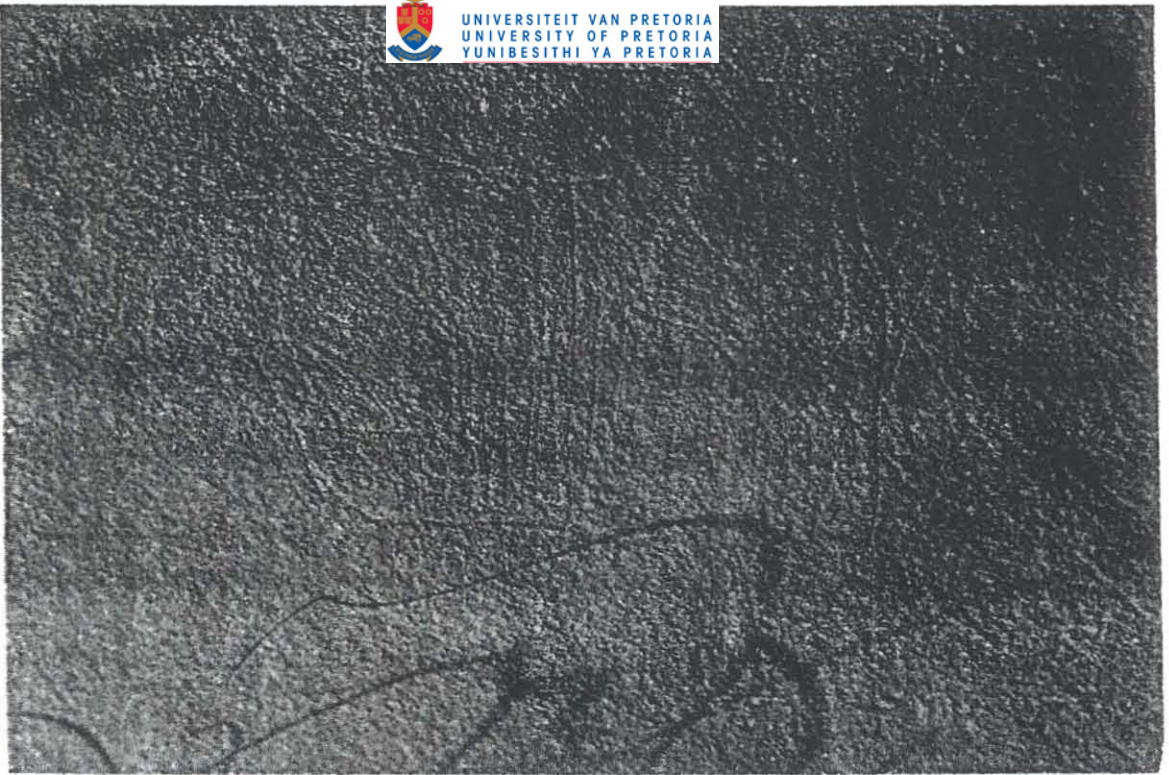


(Photo69: Figure L23- Pattern work)

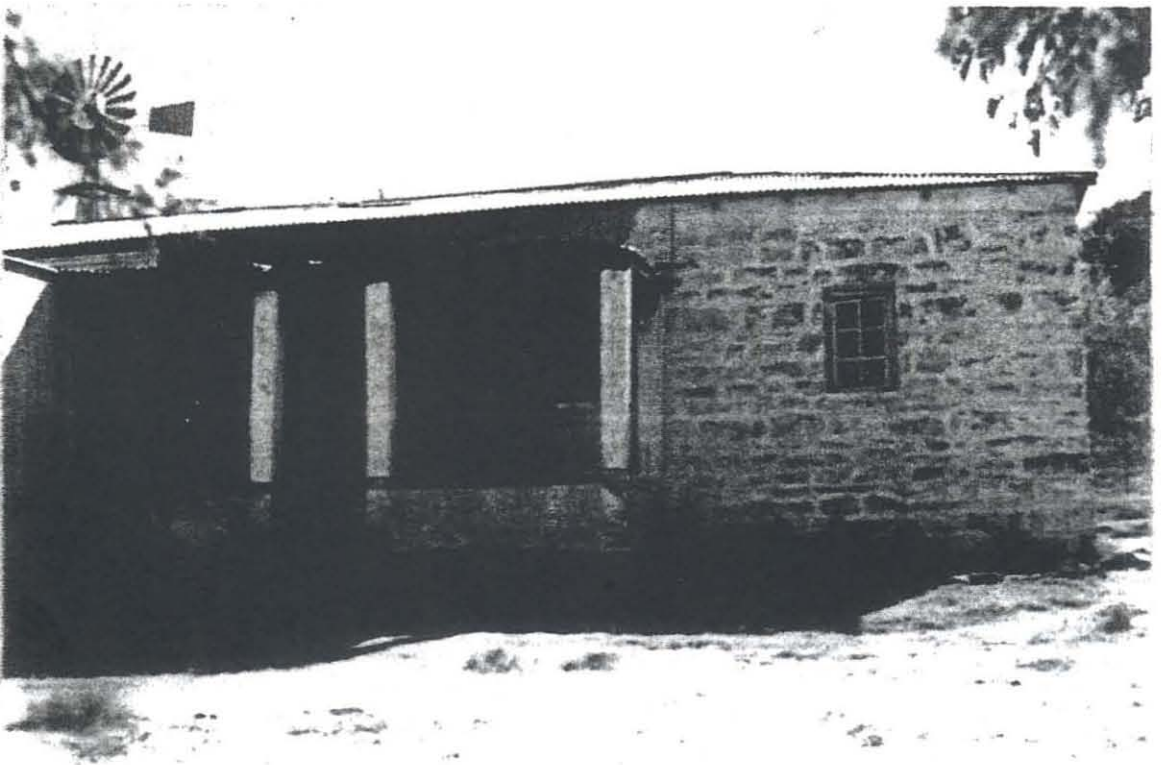


(Photo70: Figure N2- Baby antelope)

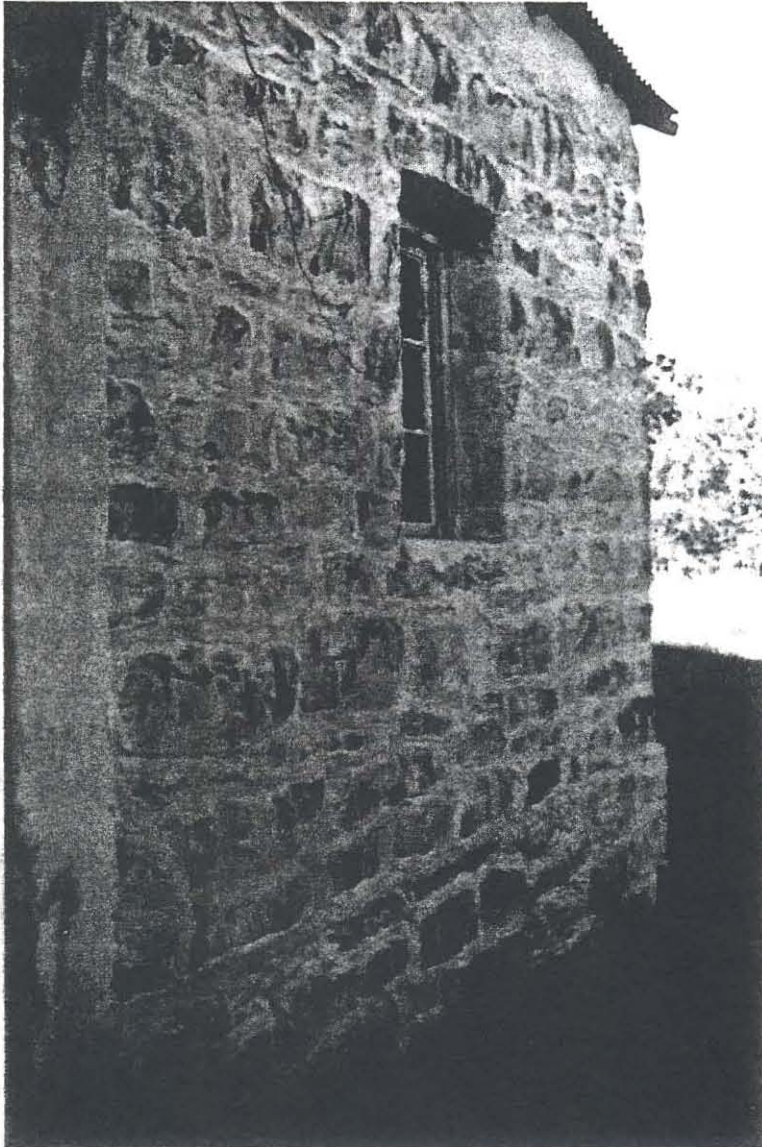




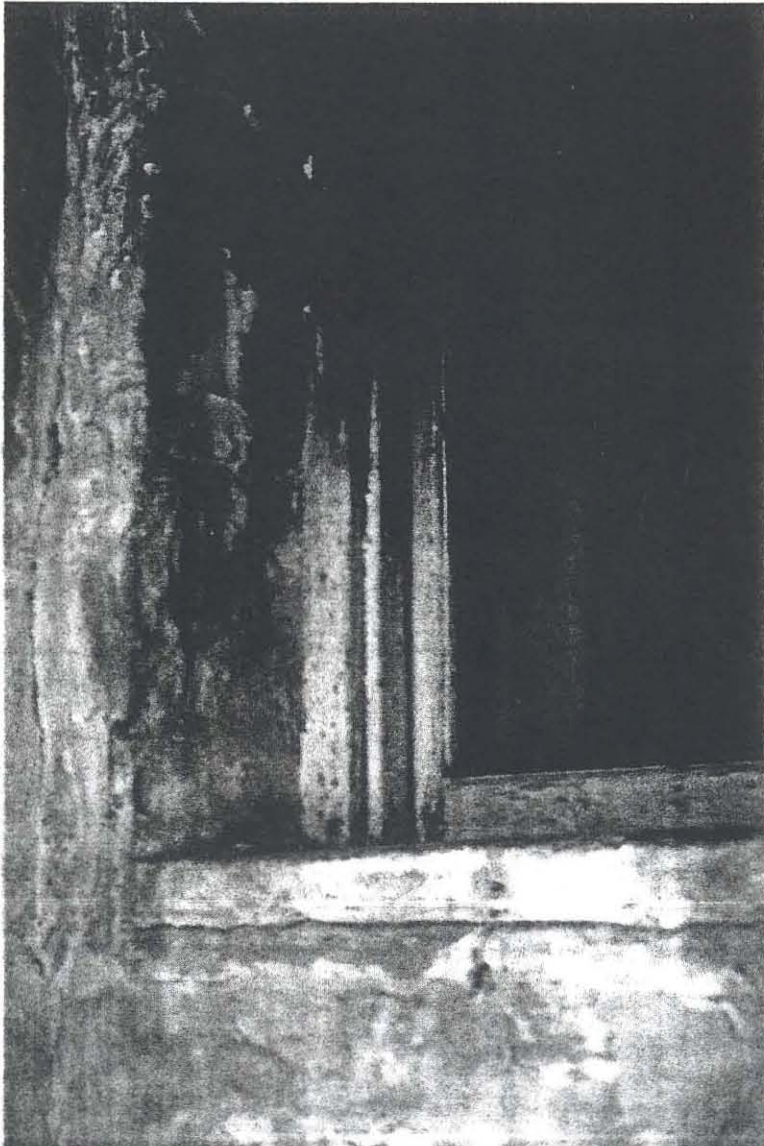
(Photo71: Figure N7- Antelope and Pattern work)



(Photo72: The Farmhouse)



(Photo73: The hornfel rocks used to build the house)



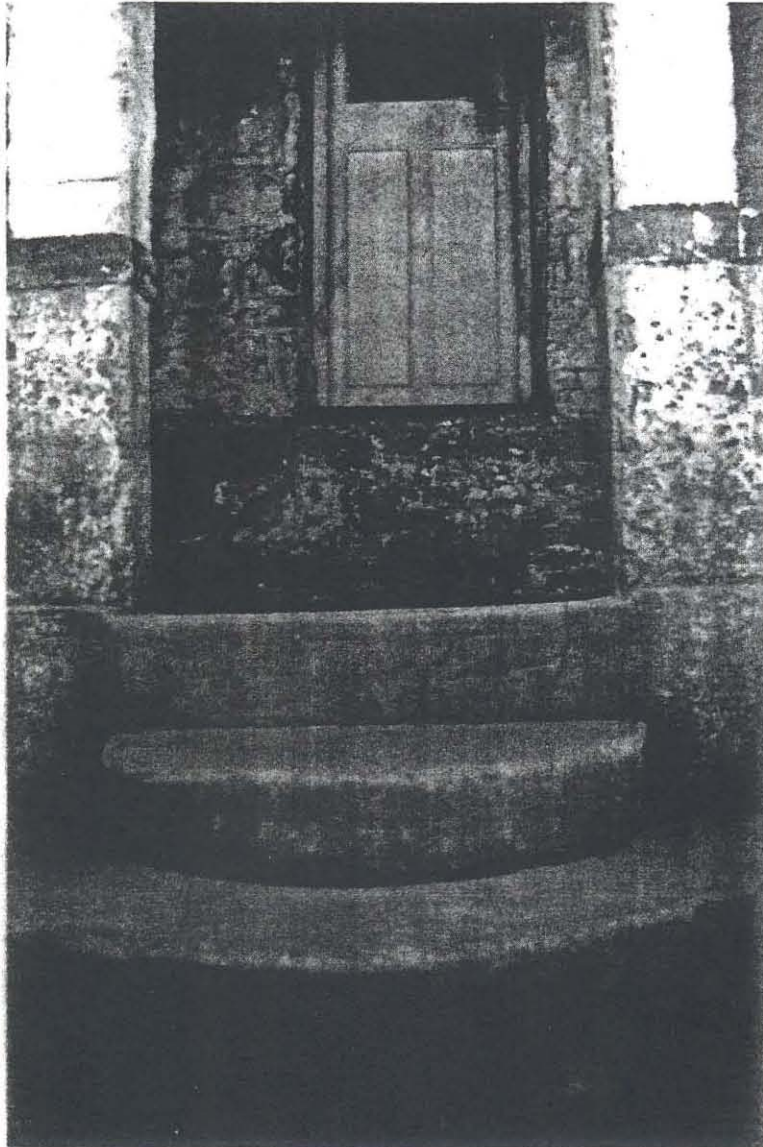
(Photo74: The thickness of the walls can be noted at the windows)





(Photo75: The stairs leading to the southern and main entrance of the house)





(Photo76: The steps leading to the stoop on the south side)



(Photo77: General De Wets office)