

## Chapter 4

# Major Vegetation Types of the Soutpansberg Conservancy and the Blouberg Nature Reserve

(Research paper submitted for publication in *Koedoe*)

## Major Vegetation Types of the Soutpansberg Conservancy and the Blouberg Nature Reserve

T.H.C. Mostert<sup>1</sup>, G.J. Bredenkamp<sup>1</sup>, H.L. Klopper<sup>1</sup>, C. Verwey<sup>1</sup>, R.E. Mostert<sup>2</sup> and N. Hahn<sup>3</sup>

1. African Vegetation and Plant Diversity Research Centre, Department of Botany, University of Pretoria, Pretoria, 0002.
2. South African Biodiversity Institute, Private Bag X101, Pretoria, 0001.
3. Herbarium Soutpansbergensis, P.O. Box 1734, Makhado, 0920.

### Abstract

*The Major Vegetation Types and plant communities of the Soutpansberg Centre of Endemism are described in detail with special reference to the Soutpansberg Conservancy and the Blouberg Nature Reserve. Phytosociological data from 466 sample plots were ordinated using a Detrended Correspondence Analysis (DECORANA) and classified using Two-way Indicator Species Analysis (TWINSPAN). The resulting classification was further refined with table-sorting procedures based on the Braun-Blanquet floristic-sociological approach of vegetation classification using MEGATAB. Eight Major Vegetation Types were identified and described as Eragrostis lehmanniana var. lehmanniana-Sclerocarya birrea subsp. caffra BNR Northern Plains Bushveld, Euclea divinorum-Acacia tortilis BNR Southern Plains Bushveld, Englerophytum magalismsontanum-Combretum molle BNR Mountain Bushveld, Adansonia digitata-Acacia nigrescens Soutpansberg Arid Northern Bushveld, Catha edulis-Flueggia virosa Soutpansberg Moist Mountain Thickets, Diplorhynchus condylocarpon-Burkea africana Soutpansberg Leached Sandveld, Rhus rigida var. rigida-Rhus magalismsontanum subsp. coddii Soutpansberg Mistbelt Vegetation and Xymalos monospora-Rhus chirendensis Soutpansberg Forest Vegetation.*

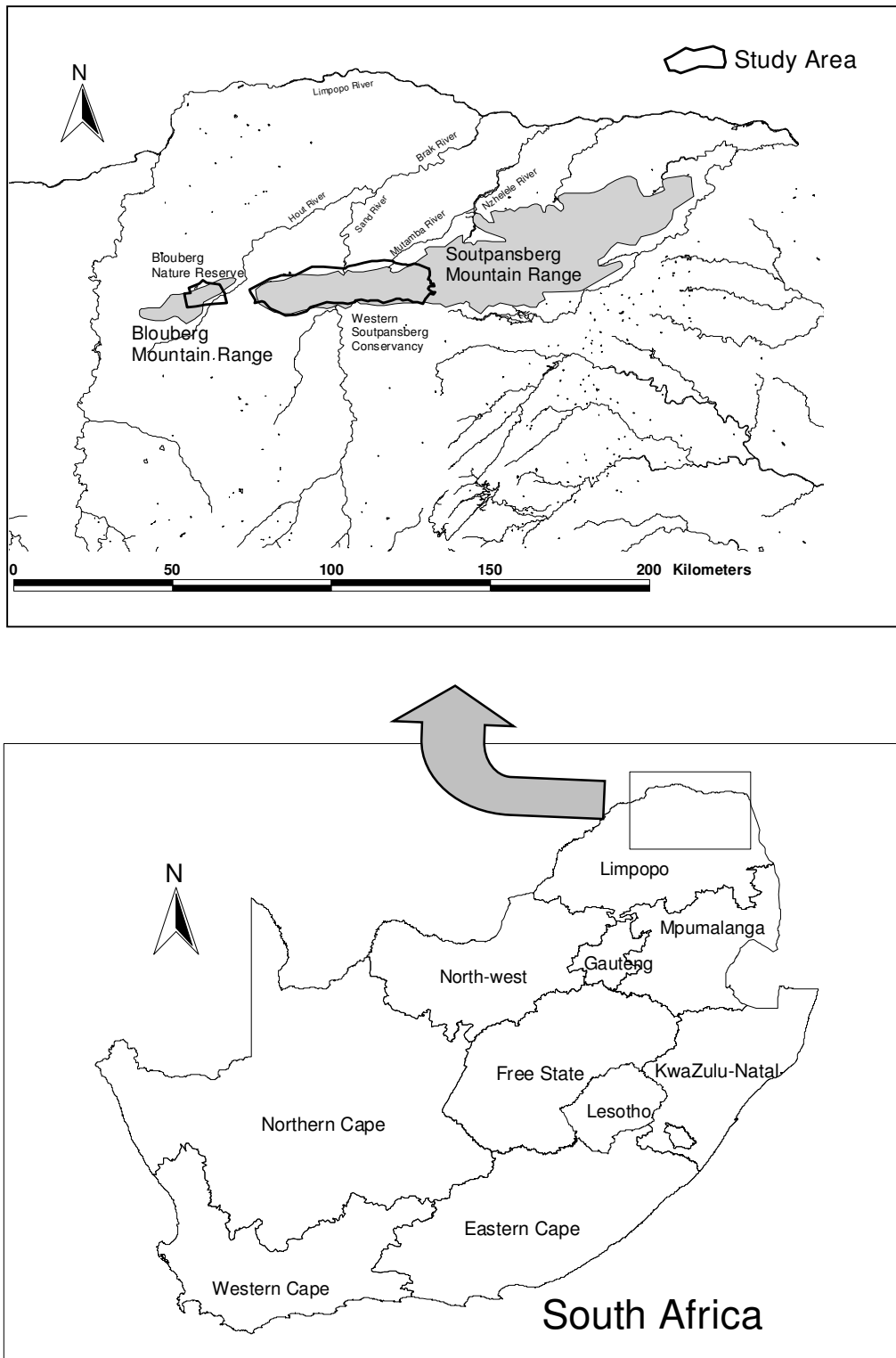
## **Introduction**

The Soutpansberg Conservancy (SC) and the Blouberg Nature Reserve (BNR) reveal extremely rich diversities of plant communities relative to the sizes of these conservation areas (Van Wyk & Smith 2001). Although Van Rooyen & Bredenkamp (1996) recognised this diversity and unique composition of plant communities within the Soutpansberg–Blouberg complex, the lack of detailed research in the region forced them to lump the area’s vegetation under the broad term of Soutpansberg Arid Mountain Bushveld. Acocks (1953) recognised four different Veld Types for the greater surrounding region and described them as Arid Sweet Bushveld, Mixed Bushveld, Sourish Mixed Bushveld and Sour Bushveld. Most of these Veld Types were described as heterogeneous (Acocks 1953), comprising of many sub-communities with different agricultural and production potentials. In addition to the savanna vegetation of the area, Geldenhuys & Murray (1993) and Lubke & McKenzie (1996) described and mapped the patches of Afromontane Forest associated with the region. Van Wyk & Smith (2001) only briefly mention the occurrence of “Fynbos-type” vegetation along the summit of the mountain. They also refer to dense, almost mono-specific stands of Lebombo ironwood (*Androstachys johnsonii*) on the arid northern slopes of the mountain. Due to major gaps in the available vegetation data, no attempt has yet been made to synthesize, classify and to describe the plant communities of this region.

## **The study area**

### Location

The BNR (7000 ha) and SC (100 000 ha) are located in the arid northern regions of the Limpopo Province of South Africa (Fig.1). For the purpose of this study, the SC is defined as a section of the Soutpansberg Mountain Range contained by four provincial and national roads. The eastern boundary (E29°55’) is the N1 from Makhado in the south to Wyllies Poort in the north. The northern boundary (S 22°52’) is the R523 road from Wyllies Poort in the east to Kalkheuwel in the west. The western boundary (E29°15”) is the R521 road from Kalkheuwel in the north to Vivo in the south. The southern boundary (S23°12’) is the R522 road from Vivo in the west to Makhado in the east. From east to west it spans approximately 70 km and from north to south approximately 25 km at it’s widest. The BNR lies approximately 40 km to the west, situated along the eastern half of the Blouberg Mountain.



**Fig. 1.** The location of the Blouberg Nature Reserve and Western Soutpansberg Conservancy within South Africa.

### Topography

The SC and BNR are part of the Blouberg–Soutpansberg Mountain Range, with its ENE–WSW orientation. Although the Blouberg and Soutpansberg belong to the same geological formation they are referred to as separate entities. Successive faulting along the Tshamuvhudzi, Kranspoort, Nakab and Zoutpan strike-faults, followed by the northwards tilting of the area, created these quartzite mountains within the surrounding Limpopo Plain. This gave the Blouberg–Soutpansberg Mountain Range a wedge-shaped appearance with steep southern slopes and moderate northern slopes. The ridges are highest at the western extremity of this range, gradually descending until it finally plunges beneath the Karoo Supergroup along the northern reaches of the Lebombo Mountains near the north-eastern border of the Limpopo Province. The SC's altitude ranges from 750 m above sea level at Waterpoort to 1 748 m at Lejuma. The BNR's altitude ranges from 850 m above sea level in the east to 1 400 m in the west. The highest peak of the Blouberg lies further to the west, reaching 2 051 m above sea level (Bumby 2000). The surrounding plains are approximately 850 m above sea level.

### Geology and soils

The geology of the SC and BNR is dominated by pink, erosion resistant quartzite, and sandstone with minor pebble washes of the Wylties Poort Geological Formation of the Soutpansberg Group. Other less prominent rock types include shale, conglomerate, basalt and diabase intrusions. The rocks of the study area do not contain large amounts of minerals that are of economic value.

Soils derived from the quartzite and sandstone are generally shallow, gravely, skeletal and well drained, with low nutrient content and acidic characteristics. Soils derived from the basalt and diabase dykes are fine textured, clayey, well weathered and generally deep. These poorly drained soils are prone to erosion along the higher rainfall southern slopes. Soils derived from the Aeolian Kalahari sands are fine-grained deep sands. Large areas along the northern sloped contain no soil, consisting only of the exposed underlying mother material. Peat soils occur along the cooler high lying wetlands of the SC. The deeper soils within the mistbelt act as sponge areas, which slowly release water to feed mountain streams over prolonged periods.

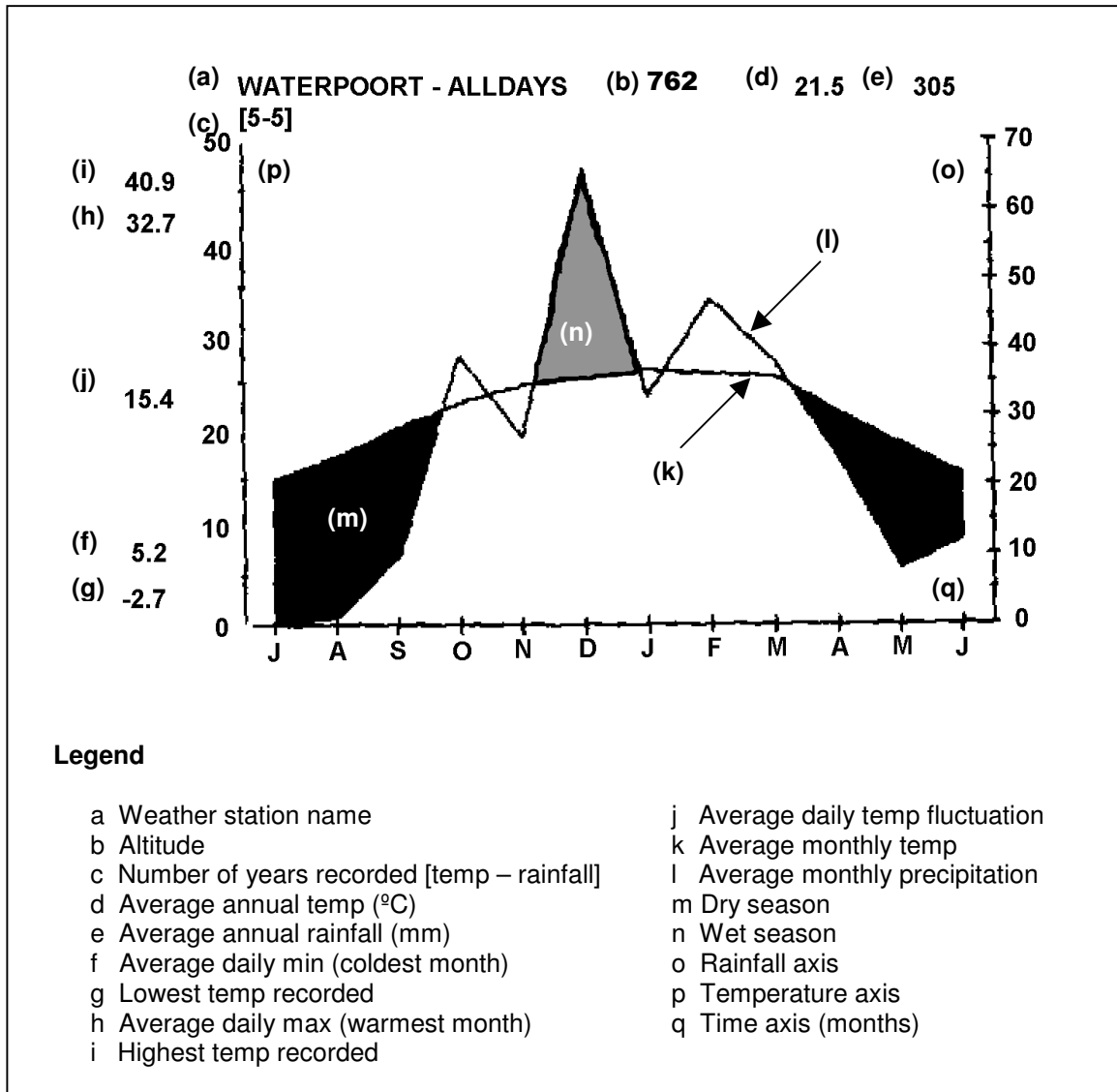
### Climate

The SC and BNR fall within the summer rainfall zone of southern Africa. A climate diagram (Fig. 2) depicts typical rainfall patterns and temperature gradients within the study area. Due to the temporal and spatial variability of rainfall for this area, a sample five-year period was chosen for a single area for illustrative purposes only. All other averages mentioned in the text were calculated using long-term data. The South African Weather Bureau (2004) provided the data used to compile this diagram. Due to the east-west orientation of the Soutpansberg, it experiences orographic rainfall. This phenomenon is due to moisture-laden air from the Indian Ocean, driven by the prevailing south-easterly winds into the southern scarp of the Soutpansberg. The north-south orientated Wolkeberg further blocks the westerly movement of the atmospheric moisture, forcing it into the wedge created by the two mountains in the vicinity of Entabeni. Large amounts of rain are discharged onto these southern slopes of the Soutpansberg and eastern slopes of the Wolkberg. Entabeni receives an annual rainfall of 1 874 mm. Orographic mist along this southern slope may increase annual precipitation to 3 233 mm (Hahn 2002, Olivier & Rautenbach 2002). This creates a rain-shadow effect along the western slopes of the Wolkberg and the northern slopes of the Soutpansberg. With the SC and BNR located north-west of the Soutpansberg–Wolkberg junction, a double rain-shadow effect is experienced along the northern slopes of the study area. Waterpoort, located north of the Soutpansberg, receives only 367 mm rain annually.

Due to the extreme topographic diversity and altitude changes over short distances within the study area, climate (especially rainfall and mist precipitation) varies dramatically. The amount of orographic rain associated with the southern ridges varies considerably in accordance to the changing landscape. The venturi effect caused by certain narrow gorges when mist is forced through them by orographic, anabatic and catabatic winds can lead to abnormally high localised rainfall (Matthews 1991; Hahn 2002). The areas just below the escarpment crest, where atmospheric moisture can be trapped most effectively against the south-facing escarpment, generally yield the highest precipitation (Matthews 1991).

The diversity of rainfall in the study area can be seen by the long-term average rainfall recorded for three farms, namely Ventersdorp, Hanglip and Schyffontein with annual rainfall of 585 mm, 774 mm and 835 mm respectively (South African Weather Bureau). Apart from the spatial variation in rainfall, the area reveals a high temporal variation in recorded rainfall (Geldenhuys & Murray 1993). Mean annual rainfall for Makhado fluctuated between 571 mm for the period 1965–1971 and 1 027 mm for the period 1979–1988 (South African Weather Bureau 2004). In addition to these rainfall figures, the amount of precipitation as a result of mist can be substantial (Schutte 1971). In the higher lying areas of the KwaZulu-Natal Drakensberg, for example, the orographic fog contribution at 1 800 m altitude is an additional 403 mm per annum, which amounts to one third of the mean annual precipitation (Matthews 1991). As with many mountainous areas, the daily weather of the higher altitude crests and summits of the Soutpansberg is very unpredictable, fluctuating between extremes within a matter of hours.

The higher lying crests and ridges within the mistbelt are exposed to strong winds. During the summer months, these winds carry moisture in from the Indian Ocean, creating a seasonal mistbelt, which gives rise to an abundance of rock- and bark-lichens and bryophytes. The combination of frequent orographic rain and mist during the summer months leaves the available soil drenched and sometimes flooded for extended periods. During the prolonged dry season, the prevailing winds are dry, causing dehydration and desiccation of the soils and vegetation (Hahn 2002). These extreme and fluctuating environmental conditions have led to specialization among the plants and may explain the relatively high level of endemism within this vegetation type (Hahn 2002).



**Fig. 2.** Climate diagram for the Alldays / Waterpoort area.



### Soutpansberg Centre of Biological Diversity

The Soutpansberg–Blouberg region has been recognized as a Centre of Endemism by Van Wyk and Smith (2001). However, little ecological knowledge of the area exists (Anderson 2001, Berger *et al.* 2003). Some floristic surveys conducted by Hahn (1994; 1996; 1997; 1999; 2002), Stirton (1982), Obermeyer *et al.* (1937) and Van Wyk (1984; 1996) indicated that the Soutpansberg Centre of Endemism is exceptionally diverse and species rich for its size (Van Wyk & Smith 2001). The conservation value of this centre lies in its unique ability to house a wide variety of floristic elements from the surrounding floristic regions (Hahn 2002). The region is an outstanding centre of plant diversity, with approximately 2 500–3 000 recorded vascular plant taxa (Hahn 1997). The region boasts with 41% of all plant genera and 68% of all known plant families of the flora of southern Africa. Altogether 595 specific and infra-specific trees and shrubs are known from the Soutpansberg, amounting to one third of all the known tree species in the entire southern Africa region (Hahn 1994; 1997; 2003). This constitutes one of the highest tree counts in southern Africa (Hahn 1997). The Kruger National Park, which covers an area of two million hectares, contains approximately 380 tree species (Van Wyk 1994), whereas 321 tree species have been recorded by Hahn (2002) in an area of only 2 000 hectares within the SC. Trees and shrubs encompass approximately 24% of the vascular plants of the Soutpansberg and play an important role in the species composition, vegetation structure and relative dominance within the different plant communities.

More than 500 bird species have been recorded throughout the Soutpansberg mountain range, amounting to approximately 56% of the recorded species for the entire southern Africa (Harrison *et al.* 1997; Hockey *et al.* 2005). The Soutpansberg and its surroundings contain some unique reptile habitats, and house seven endemic species (Branch 1988). A total of 46 spider families, 110 genera and 130 species have been recorded in the SC on the single farm Lejuma (<50 km<sup>2</sup>), which constitutes 70% of the families, 26% of the genera and 5% of the species recorded for South Africa (Foord *et al.* 2002; 2003). The high biological diversity of the Soutpansberg and Blouberg can possibly be attributed to the fact that the mountain range acts as a refuge in times of environmental flux (Hahn 2003).

In the light of the high diversity recorded for the Blouberg–Soutpansberg expanse, it is proposed that the region be given the status of the Soutpansberg Centre of Biological Diversity (SCBD) in addition to its recognised status as the Soutpansberg Centre of Plant Endemism. There are current efforts to create a biosphere reserve in this area, which will include the SC and BNR (Hahn *in prep.*).

### Aims of the study

This study is a first attempt at understanding the complex ecological patterns and processes observed within the SCBD. It is concerned with the phytosociology and synecology of the SC and BNR. Its aim is to identify the different plant communities and to investigate the interrelationships between plant communities and their physical and biological environments. In an attempt to create a holistic image and to explain the macro–ecology of the region, disciplines such as climatology, geology, pedology, physical geography, history and anthropology are drawn upon and integrated. This study provides a first approximation of the vegetation of the study area. It aims to define and describe the characteristics of the Major Vegetation Types and plant communities within the context of the SC and BNR. This will assist scientists, conservationists and land-use planners when future projects are conducted within the surrounding areas. The plant communities from the SC and BNR will serve as reference sites with which to compare proposed development sites from the surrounding unprotected areas. Sound environmental development is a state of mind (Siebert 2001) and something that can be achieved if basic information, such as this account, is actively drawn upon during planning and management of natural resources.

### **Methods**

The vegetation of the study area was stratified into homogeneous physiographic–physiognomic units, using arial photographs (scale 1: 50 000), as well as maps on the topography, geology, soils and Land Types of the study area. A total of 466 sample plots were randomly placed within each of these stratified units. The sample plot size was set at 400 m<sup>2</sup> in accordance with vegetation studies elsewhere in the semi-arid environments of southern Africa (Siebert 2001). The cover-abundance value for every species recorded within each sample plot was assessed according to the Braun-Blanquet cover-abundance scale (Mueller-Dombois & Ellenberg 1974). The taxon

names conform to those of Germishuizen & Meyer (2003). Environmental data include soil type, aspect, slope, surface rock cover and disturbance to the soil and vegetation.

The data set, containing 846 specific and infra specific taxa, was entered into a vegetation database created in TURBOVEG (Hennekens & Schamineé 2001). A first approximation of the main communities was arrived at by applying the TWINSpan classification program (Hill 1979a) to the floristic data, and subsequent refinement of the classification was achieved by applying Braun-Blanquet procedures (Bredenkamp *et al.* 1989; Fuls *et al.* 1993; Kent & Coker 1996; Siebert *et al.* 2003; Van Staden & Bredenkamp 2006).

A synoptic table was constructed to represent the major groups defined by the TWINSpan classification (Table 1). Refinement of the synoptic table was done with the Braun-Blanquet procedures (Bredenkamp *et al.* 1989, Fuls *et al.* 1993, Van Staden & Bredenkamp 2006). The synoptic table contains species in each of the identified Major Vegetation Types on constancy values of 20% ordinal scale (I–V). Only species with a minimum constancy value of 20% (II), in any of the given Major Vegetation Types, were included in the table. All the excluded taxa will be included into detailed phytosociological tables of subsequent papers that will focus on the individual Major Vegetation Types of the SC and BNR. The ordination algorithm DETrended CORrespondence ANALysis (DECORANA)(Hill 1979b) was applied using the computer software package PC-ORD (McCune & Mefford 1999), to determine gradients in vegetation and the relationship between these plant communities and the physical environment.

## Results

Eight Major Vegetation Types were identified for the SC and the BNR. These represent the Forest Biome, Grassland Biome, Savanna Biome and some azonal plant communities.

A dendrogram (Fig. 3) of the hierarchical classification was produced with the software package TWINSpan (Hill 1979b). The first division separated the *Xymalos monospora–Rhus chirendensis* Soutpansberg Forest Vegetation form the savanna and

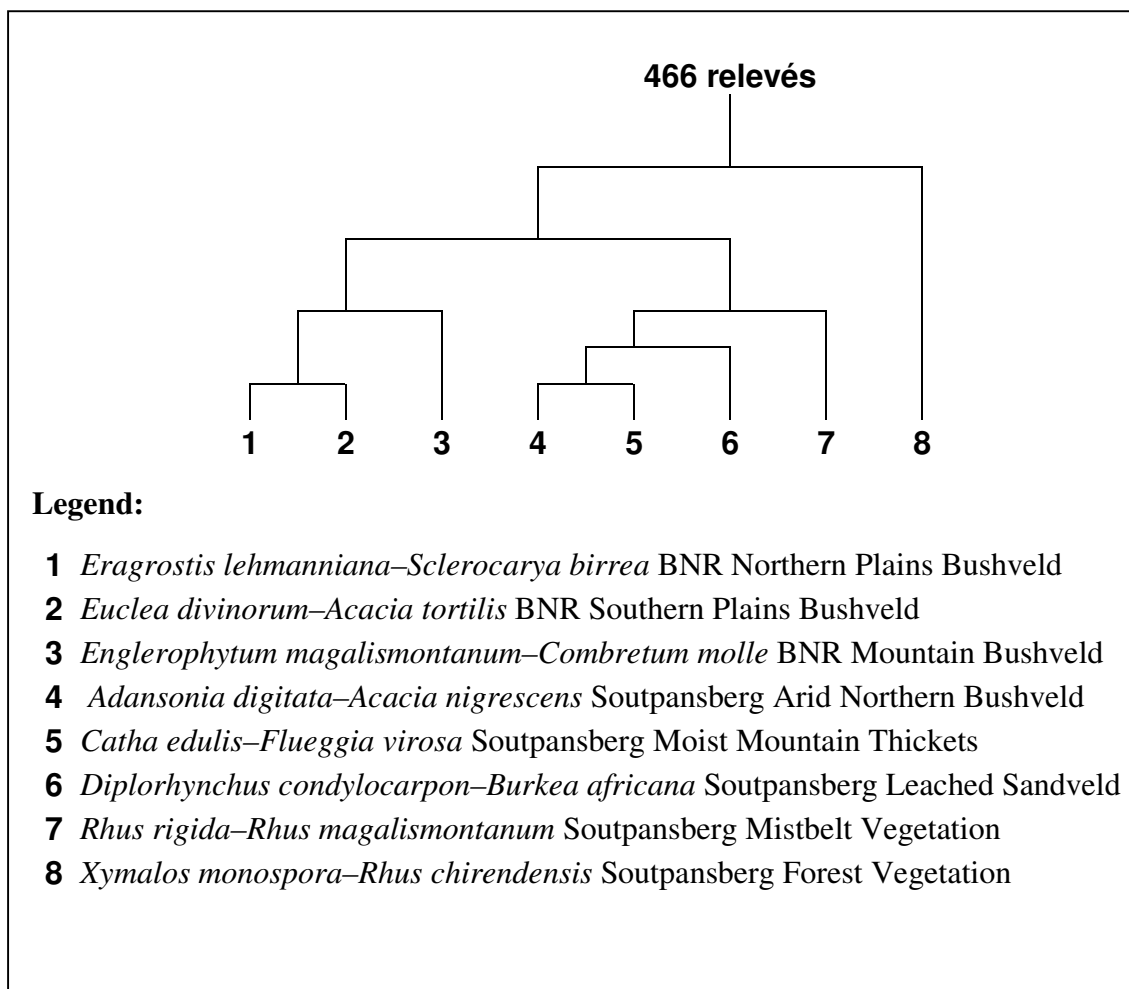
grassland Vegetation Types. The second division separated the vegetation of the SC from that of the BNR. A third division split off the *Rhus rigida* var. *rigida*–*Rhus magalismontanum* subsp. *coddii* Soutpansberg Mistbelt Vegetation from the SC-cluster, and split off the BNR Plains Bushveld from the BNR Mountain Bushveld. Further divisions separated the BNR Northern Plains Bushveld from the BNR Southern Plains Bushveld, while the vegetation of the SC was divided into *Adansonia digitata*–*Acacia nigrescens* Soutpansberg Arid Northern Bushveld, *Catha edulis*–*Flueggia virosa* Soutpansberg Moist Mountain Thickets, *Diplorhynchus condylocarpon*–*Burkea africana* Soutpansberg Leached Sandveld.

The dataset was classified into different plant communities based on diagnostic species. Strong emphasis was placed on long-lived perennial species for the purpose of community description and syntaxonomy. These species were specifically chosen to ensure relatively long-term predictability regarding effective plant community identification by future fieldworkers and managers. Due to the fleeting existence and unpredictable appearance of annual and weak perennial species within communities of arid and semi-arid ecosystems, it was decided to treat such species as the more temporary and fluctuating component within the vegetation of these event-driven systems (Westoby *et al.* 1989).

The floristic composition of the eight Major Vegetation Types is given in a synoptic table (Table 1). These major types are discussed below.

### **Description of the Major Vegetation Types**

The geographical distribution of the Major Vegetation Types of the BNR and SC are displayed in Figures 4 and 5. The smaller patches and finer mosaic patterns formed by Major Vegetation Types along the areas of more extreme morphological complexity was not mapped. The precision with which vegetation units were mapped is therefore scale bound.



**Fig. 3.** A dendrogram showing the hierarchical divisions created with the TWINSpan (Two Way Indicator Species Analysis) computer software package (Hill 1979a).



**Table 1** Synoptic table of the Major Vegetation Types of the Soutpansberg Conservancy and the Blouberg Nature Reserve

Vegetation type	1	2	3	4	5	6	7	8
Number of releves	98	84	16	65	20	50	33	70
<b>Species Group A</b>								
<b>Diagnostic spp for the <i>Eragrostis lehmanniana</i> var. <i>lehmanniana</i>–<i>Sclerocarya birrea</i> subsp. <i>caffra</i> BNR Northern Plains Bushveld</b>								
<i>Eragrostis lehmanniana</i> var. <i>lehmanniana</i>	V	I	I	I				
<i>Phyllanthus burchellii</i>	IV							
<i>Indigofera</i> species	III	I	I					
<i>Leucas sexdentata</i>	III							
<i>Limeum fenestratum</i>	III							
<i>Erythrophleum africanum</i>	III							
<i>Bulbostylis hispidula</i> ssp. <i>pyriformis</i>	III		I	I				I
<i>Ruellia</i> species	II							
<i>Indigofera rhytidocarpa</i>	II							
<i>Chamaecrista absus</i>	II							
<i>Hermannia grisea</i>	II							
<i>Tragus berteronianus</i>	II							
<i>Tragia minor</i>	II							
<i>Corchorus</i> species	II	I						
<i>Talinum crispatum</i>	II							
<i>Monechma divaricatum</i>	II							
<i>Dactyloctenium aegyptium</i>	II							
<i>Zornia</i> species	II							
<i>Pogonarthria squarrosa</i>	II							
<i>Blepharis subvulabilis</i>	II			I				
<i>Limeum viscosum</i>	II							
<i>Secamone parvifolia</i>	II	I						
<i>Spirostachys africana</i>	II							
<i>Chamaecrista biensis</i>	II							
<i>Asparagus exuvialis</i> fo. <i>exuvialis</i>	II							
<b>Species Group B</b>								
<b>Diagnostic spp for the <i>Euclea divinorum</i>–<i>Acacia tortilis</i> BNR Southern Plains Bushveld</b>								
<i>Lepidagathis scabra</i>	I	V						
<i>Rhinacanthus xerophilus</i>		III						



<i>Melhania prostrata</i>		III		I	I		
<i>Rhus leptodictya</i>		I	II		I	I	
<i>Enteropogon macrostachyus</i>			II				
<i>Combretum imberbe</i>			II		I		
<i>Schotia brachypetala</i>			II		I	I	
<i>Aristida congesta</i> ssp. <i>barbicollis</i>			II		I	I	
<i>Corbichonia decumbens</i>			II				

**Species Group C**

<i>Hibiscus praeteritus</i>		V	IV				
<i>Acanthospermum</i> species		V	II				
<i>Evolvulus alsinoides</i>		IV	II				
<i>Melhania forbesii</i>		IV	II				
<i>Aristida congesta</i> ssp. <i>congesta</i>		III	II		I		
<i>Hibiscus calyphyllus</i>		III	V				
<i>Sida ovata</i>		III	II	I			
<i>Blepharis integrifolia</i>		III	II		I		
<i>Lantana rugosa</i>		II	IV	I			
<i>Acacia tortilis</i> ssp. <i>heteracantha</i>		II	III		I	I	
<i>Aristida adscensionis</i>		II	III				
<i>Arctotis</i> species		II	II				
<i>Acalypha indica</i>		II	II				
<i>Philenoptera violacea</i>		II	II		I		
<i>Ocimum gratissimum</i> ssp. <i>gratissimum</i>		II	II				

**Species Group D**

**Diagnostic spp for the *Englerophytum magalismontanum*–*Combretum molle* BNR Mountain Bushveld**

<i>Loudetia filifolia</i>			IV				
<i>Rhynchosia vendae</i>		I	III				
<i>Trichoneura grandiglumis</i>			III				
<i>Aristida</i> species		I	III				
<i>Combretum zeyheri</i>		I	II				
<i>Elephantorrhiza</i> species			II				
<i>Dalechampia</i> species			II				
<i>Tricliceras schinzii</i>			II				

**Species Group E**

<i>Cheilanthes involuta</i>		II	III				
<i>Tephrosia purpurea</i>		III	IV				



**Species Group F**

<i>Cyperus angolensis</i>	III   III   III				
<i>Commiphora</i> species	IV   II   III				
<i>Grewia flavescens</i> var. <i>flavescens</i>	IV   IV   II				
<i>Eragrostis biflora</i>	II   II   II				

**Species Group G**

**Diagnostic spp for the *Adansonia digitata*–*Acacia nigrescens* Soutpansberg Arid Northern Bushveld**

<i>Tribulus terrestris</i>				III			
<i>Grewia hexamita</i>				III			
<i>Commiphora glandulosa</i>				III			
<i>Blepharis diversispina</i>				III			
<i>Adansonia digitata</i>				II			
<i>Grewia flava</i>	I	I		II			
<i>Grewia subspathulata</i>				II			
<i>Cordia monoica</i>				II	I		
<i>Kirkia acuminata</i>	I	I		II			
<i>Maerua parvifolia</i>				II			
<i>Terminalia prunioides</i>	I			II			
<i>Maerua edulis</i>				II	I		
<i>Commiphora tenuipetiolata</i>				II			
<i>Tephrosia macropoda</i>				II			
<i>Solanum lichtensteinii</i>				II	I		
<i>Cassia abbreviata</i>	I			II			
<i>Cleome angustifolia</i> ssp. <i>petersiana</i>				II			
<i>Ochna inermis</i>				II		I	
<i>Lannea schweinfurthii</i>	I			II			
<i>Ledebouria apertiflora</i>				II			
<i>Commiphora viminea</i>				II			
<i>Sterculia rogersii</i>		I		II			
<i>Grewia villosa</i>				II			
<i>Chamaecrista mimosoides</i>				II		I	I
<i>Boscia foetida</i> ssp. <i>rehmanniana</i>				II			
<i>Sansevieria aethiopica</i>				II			
<i>Heliotropium steudneri</i>	I	I		II	I		
<i>Commiphora africana</i> var. <i>africana</i>				II			

**Species Group H**

<i>Commiphora mollis</i>	IV   II	IV			
<i>Combretum apiculatum</i> ssp. <i>apiculatum</i>	III   III   I   III		I		





<i>Boscia albitrunca</i> var. <i>albitrunca</i>	III	II		II			
<i>Grewia bicolor</i> var. <i>bicolor</i>	III	III		II	I	I	
<i>Cissus cornifolia</i>	II	II	II	II			
<i>Combretum mossambicense</i>	III			II			
<i>Pristimera longipitiolata</i>	II	I		II	I		

**Species Group I**

**Diagnostic spp for the *Catha edulis*–*Flueggia virosa* Soutpansberg Moist Mountain Thickets**

<i>Grewia occidentalis</i> var. <i>occidentalis</i>					IV		
<i>Dovyalis zeyheri</i>					IV		
<i>Acalypha glabrata</i>				I	IV		
<i>Dombeya rotundifolia</i> var. <i>rotundifolia</i>		I			IV		I
<i>Catha edulis</i>					IV		
<i>Rhus pentheri</i>					III		I
<i>Carissa edulis</i>					III		
<i>Rhoicissus tridentata</i> ssp. <i>tridentata</i>					III		I
<i>Senna petersiana</i>		I		I	III		
<i>Diospyros lycioides</i>			I		III		I
<i>Berchemia zeyheri</i>					III		
<i>Dovyalis caffra</i>					II		
<i>Brachiaria deflexa</i>					II		
<i>Capparis tomentosa</i>					II		
<i>Euphorbia ingens</i>	I				II		
<i>Acacia ataxacantha</i>		I			II		I
<i>Euclea undulata</i>				I	II		
<i>Pavetta schumanniana</i>					II		I
<i>Acacia rehmanniana</i>					II		
<i>Commelina benghalensis</i>					II		I
<i>Gymnosporia senegalensis</i>					II		
<i>Acokanthera oppositifolia</i>					II		
<i>Mystroxydon aethiopicum</i> ssp. <i>schlechteri</i>				I	II		
<i>Rhus pyroides</i>					II		
<i>Bridelia mollis</i>		I		I	II		
<i>Clerodendrum glabrum</i> var. <i>glabrum</i>					II		
<i>Ekebergia capensis</i>					II		
<i>Allophylus africanus</i> var. <i>africanus</i>					II		
<i>Tarchonanthus camphoratus</i>					II		
<i>Maerua caffra</i>					II		
<i>Coddia rudis</i>					II		I
<i>Lippia javanica</i>					II		I
<i>Jasminum multipartitum</i>					II	I	I



<i>Combretum hereroense</i>		I		I			I		II						
<i>Eragrostis superba</i>									II			I			
<i>Panicum deustum</i>			I				I		II						
<i>Acacia caffra</i>									II						
<i>Setaria megaphylla</i>									II						
<i>Christella guenziana</i>									II						
<i>Euclea crispa</i> ssp. <i>crispa</i>									II						
<i>Cyperus albostriatus</i>									II			I			
<i>Olea europaea</i> ssp. <i>africana</i>									II						
<i>Bridelia micrantha</i>									II						
<i>Buddleja saligna</i>									II						
<i>Solanum tettense</i> var. <i>renschii</i>							I		II						
<i>Cussonia natalensis</i>									II						
<i>Ficus sycomorus</i> ssp. <i>sycomorus</i>									II						
<i>Dicliptera heterostegia</i>							I		II						
<i>Scolopia zeyheri</i>									II						
<i>Canthium inerme</i>									II						
<i>Buddleja salviifolia</i>									II						
<i>Podocarpus falcatus</i>									II						
<i>Pyrenacantha grandiflorus</i>									II						
<i>Aloe greatheadii</i> var. <i>greatheadii</i>									II			I			
<i>Canthium mundianum</i>									II		I				
<i>Bothriochloa insculpta</i>									II						
<i>Ficus sur</i>									II			I			
<i>Sansevieria hyacinthoides</i>							I		II						
<i>Cyperus sphaerospermus</i>									II			I			
<i>Bulbostylis burchellii</i>									II			I			
<i>Syzygium cordatum</i>									II						
<i>Aloe marlothii</i> ssp. <i>marlothii</i>									II						
<i>Barleria gueinzii</i>									II						
<i>Pavetta eylesii</i>									II						
<i>Capparis fascicularis</i> var. <i>fascicularis</i>									II						
<i>Acacia gerrardii</i> var. <i>gerrardii</i>									II						
<i>Justicia flava</i>		I					I		II						
<b>Species Group J</b>															
<i>Plectroniella armata</i>									II		III		I		
<i>Hibiscus meyeri</i>									III		II				
<i>Peltophorum africanum</i>			I						II		III		I		
<i>Ximenia caffra</i> var. <i>caffra</i>									II		II		I		
<i>Gossypium herbaceum</i> ssp. <i>africanum</i>									II		II				



**Species Group K**

<i>Euclea divinorum</i>			V			II		II			
<i>Flueggia virosa</i>		I		III			II		IV		
<i>Ximenia americana</i> var. <i>microphylla</i>				II			II		II		
<i>Heteropogon contortus</i>		I			II			II		II	
<i>Themeda triandra</i>				II		II		I		III	
<i>Acacia karroo</i>				II					V		
<i>Gymnosporia buxifolia</i>		I			II			I		III	
<i>Pappea capensis</i>				II		I		I		II	
<i>Acacia nilotica</i>				II				I		II	

**Species Group L**

<i>Dichrostachys cinerea</i> ssp. <i>africana</i>		IV		IV			IV		III		
<i>Solanum panduriforme</i>		III		IV		II		I		II	
<i>Acacia nigrescens</i>		II		IV			IV		II		I
<i>Urochloa mosambicensis</i>		III		II					II		
<i>Sclerocarya birrea</i> ssp. <i>caffra</i>		IV		II			II		II		
<i>Eragrostis rigidior</i>		III		III			I		II		
<i>Grewia monticola</i>		III		IV			III		II		I
<i>Ehretia rigida</i>		II		IV			II		III		
<i>Markhamia zanzibarica</i>		IV		I			I		II		

**Species Group M**

**Diagnostic spp for the *Diplorhynchus condylocarpon*–*Burkea africana* Soutpansberg Leached Sandveld**

<i>Centropodia glauca</i>								III		
<i>Elephantorrhiza burkei</i>								III		
<i>Diplorhynchus condylocarpon</i>								III		
<i>Ochna pulchra</i>								III		I
<i>Hexalobus monopetalus</i> var. <i>monopetalus</i>							I		II	
<i>Grewia retinervis</i>								II		
<i>Ipomoea albivenia</i>								II		
<i>Strychnos pungens</i>								II		
<i>Eragrostis pallens</i>								II		
<i>Ozoroa paniculosa</i> var. <i>salicina</i>			I			I			II	
<i>Schizachyrium jeffreysii</i>								II		
<i>Selaginella dregei</i>				I				II		I
<i>Euphorbia aeruginosa</i>								II		
<i>Aloe angelica</i>								II		
<i>Pterocarpus angolensis</i>								II		
<i>Garcinia livingstonei</i>								II		



<i>Eragrostis gummiflua</i>							II		I						
<i>Euphorbia zoutpansbergensis</i>							II								
<i>Commiphora marlothii</i>					I		II								
<i>Ficus abutilifolia</i>							II								
<i>Euphorbia cooperi</i>							II								
<i>Cineraria parvifolia</i>							II								
<i>Artabotrys brachypetalus</i>							II								
<i>Portulaca kermesina</i>							II		I						
<i>Aristida canescens</i> ssp. <i>ramosa</i>							II								
<i>Tephrosia longipes</i>							II								
<i>Aristida diffusa</i> ssp. <i>burkei</i>							II								
<i>Indigofera cryptantha</i> var. <i>cryptantha</i>							II								
<i>Ficus tettensis</i>							II								
<i>Adenia spinosa</i>							II								
<i>Orthosiphon labiatus</i>						I	II		I						
<i>Isoglossa hypoestiflora</i>							II								
<i>Anacampseros subnuda</i>							II		I						
<i>Asparagus laricinus</i>							II								
<i>Loudetia flavida</i>							II								
<i>Androstachys johnsonii</i>							II								
<i>Dicoma montana</i>							II								
<b>Species Group N</b>															
<i>Tricalysia junodii</i> var. <i>kirkii</i>						II		II							
<i>Euclea natalensis</i>		I				II		II		II					
<b>Species Group O</b>															
<i>Pseudolachnostylis maprouneifolia</i>			I		IV		I		IV						
<i>Burkea africana</i>					III				IV						
<b>Species Group P</b>															
<i>Panicum maximum</i>		V		V		IV		III		IV		II			
<i>Digitaria eriantha</i>		IV		I		IV		I		I		II		I	
<i>Ziziphus mucronata</i>		II		III		I		II		V		II			
<i>Strychnos madagascariensis</i>		II		I		IV		II				III			
<i>Enneapogon cenchroides</i>		III		III		II		II				III		I	
<i>Waltheria indica</i>		IV		II		II		II				II			
<i>Schmidtia pappophoroides</i>		III		I		II		III				II			
<i>Terminalia sericea</i>		II		I		II		II				III			
<i>Aristida stipitata</i> ssp. <i>graciliflora</i>		III				II						II			
<i>Stipagrostis uniplumis</i> var. <i>uniplumis</i>		II				I		II				II			



**Species Group Q**

**Diagnostic spp for the *Rhus rigida* var. *rigida*–*Rhus magalismontanum* subsp. *coddii* Soutpansberg Mistbelt Vegetation**

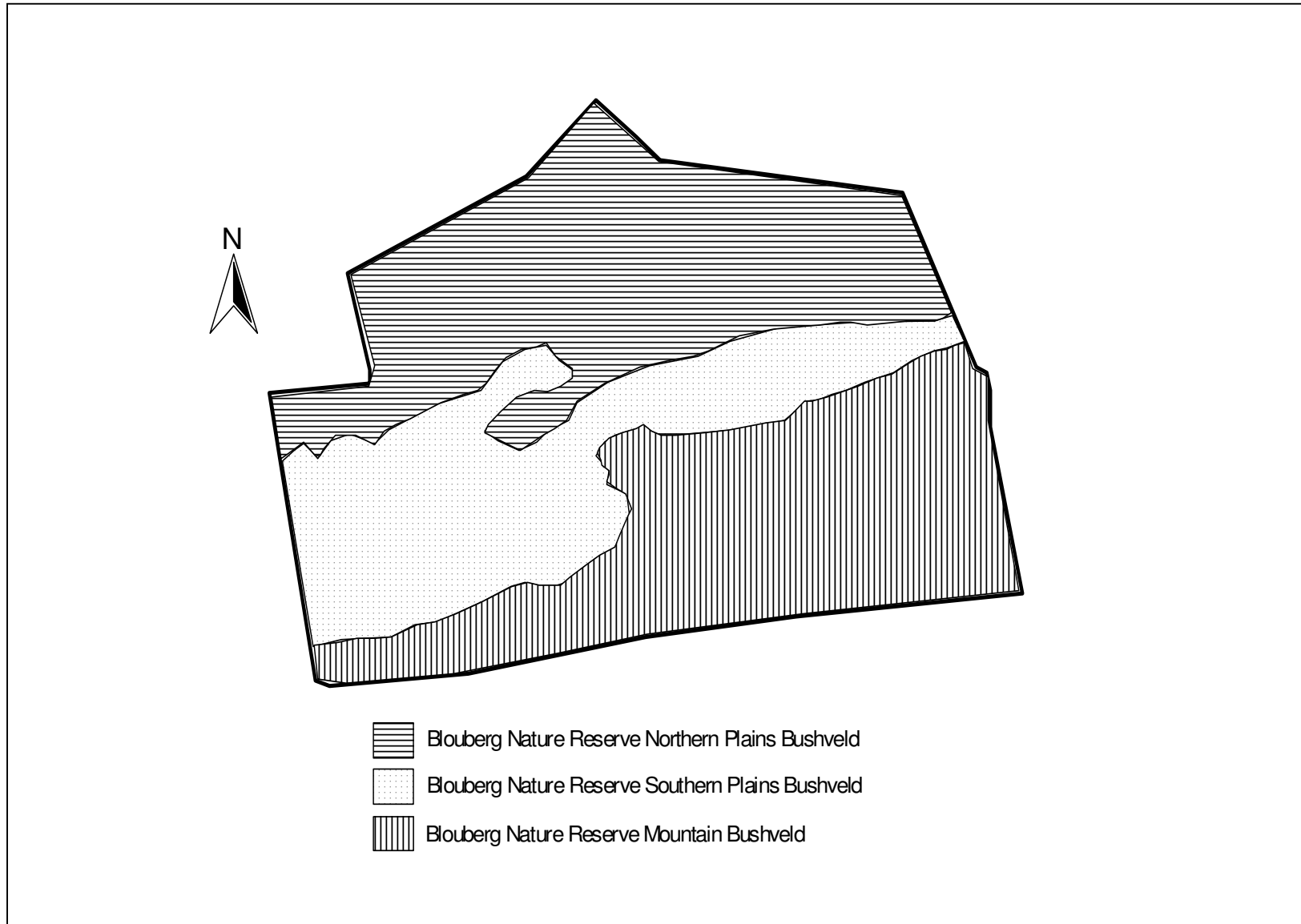
<i>Rhus rigida</i> var. <i>rigida</i>										IV
<i>Melinis nerviglumis</i>										III
<i>Helichrysum kraussii</i>										III
<i>Brachiaria serrata</i>										III
<i>Cryptolepis cryptolepioides</i>									I	III
<i>Parinari capensis</i> ssp. <i>capensis</i>									I	III
<i>Fadogia homblei</i>										III
<i>Coleochloa setifera</i>										III
<i>Setaria sphacelata</i> var. <i>torta</i>										III
<i>Rhynchosia monophylla</i>				I						II
<i>Olea capensis</i> ssp. <i>enervis</i>										II
<i>Senecio barbertonicus</i>										II
<i>Syzygium legatii</i>										II
<i>Aloe arborescens</i>										II
<i>Rothea myricoides</i>										II
<i>Euclea linearis</i>										II
<i>Crassula swaziensis</i>				I						II
<i>Khadia borealis</i>										II
<i>Trachypogon spicatus</i>										II
<i>Rhus tumulicola</i> var. <i>meeuseana</i>										II
<i>Commelina erecta</i>					I			I		II
<i>Olinia rochetiana</i>										II
<i>Cyperus obtusiflorus</i> var. <i>obtusiflorus</i>										II
<i>Combretum moggii</i>										II
<i>Vernonia natalensis</i>										II
<i>Dicoma anomala</i>				I						II
<i>Vangueria soutpansbergensis</i>									I	II
<i>Schistostephium crataegifolium</i>										II
<i>Coptosperma supra-axillare</i>										II
<i>Plectranthus neochilus</i>										II
<i>Gnidia cuneata</i>										II
<i>Elionurus muticus</i>										II
<i>Protea caffra</i> ssp. <i>caffra</i>										II
<i>Elephantorrhiza elephantina</i>										II
<i>Tetradenia riparia</i>										II
<i>Wahlenbergia undulata</i>										II
<i>Hypoxis argentea</i> var. <i>argentea</i>										II
<i>Eulophia ensata</i>										II
<i>Pteridium aquilinum</i>										II



<i>Kalanchoe sexangularis</i> var. <i>sexangularis</i>									II
<i>Sarcostemma viminalis</i>					I		I		II
<i>Aristea woodii</i>									II
<i>Apodytes dimidiata</i> ssp. <i>dimidiata</i>									II
<i>Anthospermum welwitschii</i>									II
<i>Vernonia oligocephala</i>									II
<i>Protea roupelliae</i> ssp. <i>roupelliae</i>									II
<i>Pentanisia prunelloides</i> ssp. <i>prunelloides</i>									II
<i>Lopholaena coriifolia</i>									II
<i>Senecio oxyriifolius</i>									II
<i>Coptosperma rhodesiacum</i>									II
<i>Viscum rotundifolium</i>									II
<i>Ekebergia pterophylla</i>									II
<i>Myrsine africana</i>									II
<i>Ipomoea oblongata</i>									II
<i>Helichrysum cerastioides</i>									II
<i>Bulbostylis contexta</i>									II
<i>Hypoxis hemerocallidea</i>									II
<i>Asparagus falcatus</i>							I		II
<b>Species Group R</b>									
<i>Loudetia simplex</i>									III   IV
<i>Xerophyta retinervis</i>									III   II
<i>Corchorus kirkii</i>					I				III   II
<i>Commelina africana</i> var. <i>lancispatha</i>					I				II   II
<i>Landolphia kirkii</i>									II   II
<i>Combretum vendae</i>									II   II
<i>Vangueria parvifolia</i>				I					II   II
<i>Myrothamnus flabellifolius</i>									II   II
<b>Species Group S</b>									
<i>Zanthoxylum capense</i>							IV		II
<i>Dioscorea sylvatica</i>							II		II
<i>Heteropyxis natalensis</i>							II		II
<b>Species Group T</b>									
<i>Pellaea calomelanos</i> var. <i>calomelanos</i>						II		II	III   II
<b>Species Group U</b>									
<i>Combretum molle</i>				V			IV		II   III
<i>Vitex rehmannii</i>			I		IV			I	III   II

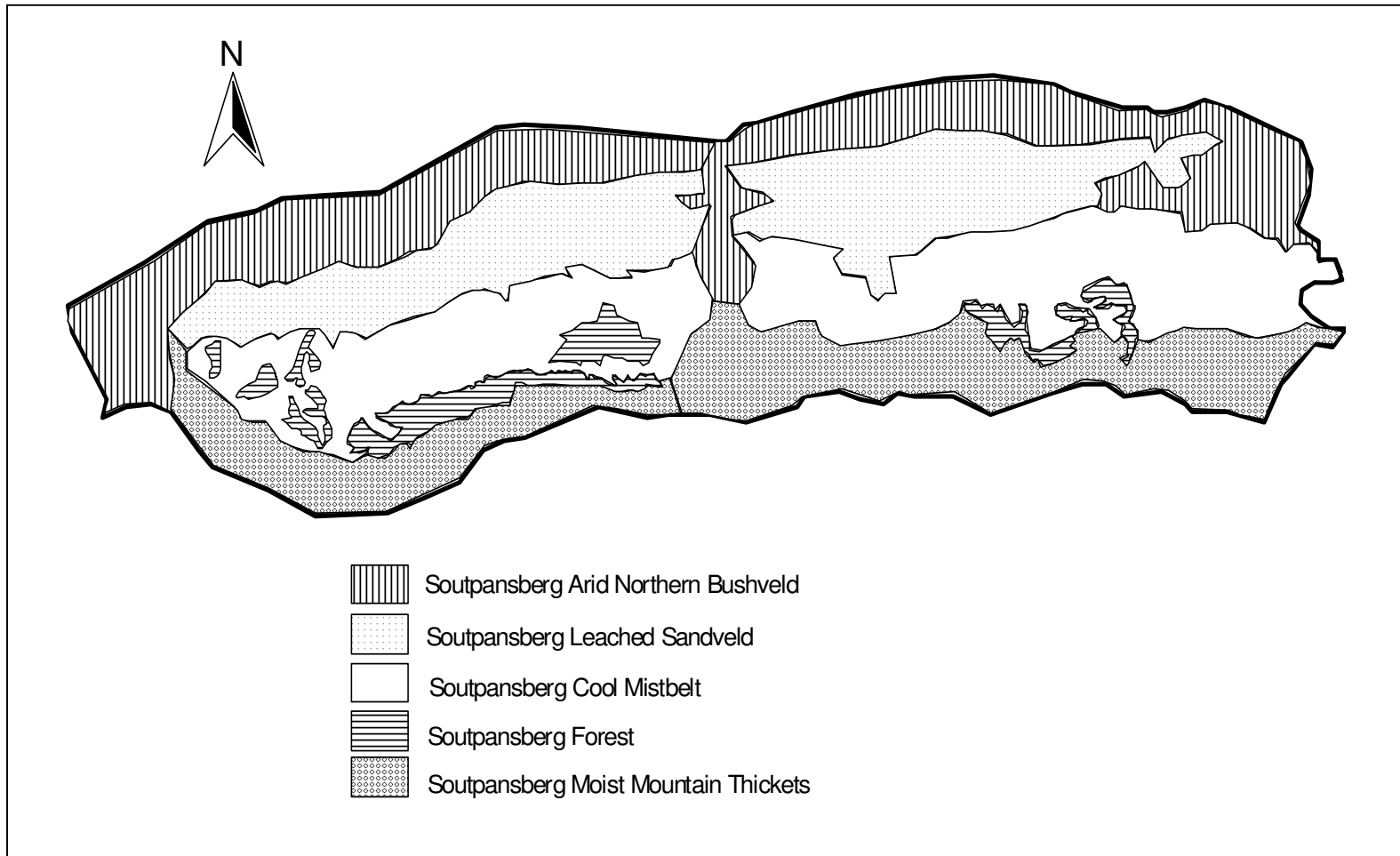


<i>Englerophytum magalismontanum</i>				IV			I	III				
<i>Vangueria infausta</i> ssp. <i>infausta</i>		I		I		III		II		II		II
<i>Rhus magalismontanum</i> ssp. <i>coddii</i>				II					IV			
<i>Hyperacanthus amoenus</i>				II		II		II		II		
<i>Mimusops zeyheri</i>				II		II		III				
<b>Species Group V</b>												
<b>Diagnostic spp for the <i>Xymalos monospora</i>–<i>Rhus chirindensis</i> Soutpansberg Forest Vegetation</b>												
<i>Xymalos monospora</i>										IV		
<i>Zanthoxylum davyi</i>										II		
<i>Celtis africana</i>						I				II		
<i>Nuxia floribunda</i>								I		II		
<i>Rhoicissus tomentosa</i>						I				II		
<i>Kiggelaria africana</i>										II		
<i>Vepris lanceolata</i>						I				II		
<i>Rapanea melanophloeos</i>								I		II		
<i>Rothmannia capensis</i>								I		II		
<i>Brachylaena discolor</i>			I							II		
<i>Ficus craterostoma</i>										II		
<i>Combretum kraussii</i>										II		
<i>Trichilia dregeana</i>										II		
<i>Trimeria grandifolia</i>										II		
<i>Drypetes gerrardii</i>										II		
<i>Oxyanthus speciosus</i> ssp. <i>gerrardii</i>										II		
<b>Species Group W</b>												
<i>Diospyros whyteana</i>									II		II	
<b>Species Group X</b>												
<i>Maytenus undata</i>						III		III		II		
<i>Rhus chirindensis</i>						II			IV			
<i>Cussonia spicata</i>						II		I		II		
<b>Species Group Y</b>												
<i>Maesa lanceolata</i>			II							II		



**Fig. 4.** The Major Vegetation Types of the Blouberg Nature Reserve





**Fig. 5.** Major Vegetation Types of the Soutpansberg Conservancy

**1. *Eragrostis lehmanniana* var. *lehmanniana*–*Sclerocarya birrea* subsp. *caffra*  
BNR Northern Plains Bushveld Major Vegetation Type**

The *Eragrostis lehmanniana* var. *lehmanniana*–*Sclerocarya birrea* subsp. *caffra* BNR Northern Plains Bushveld Major Vegetation Type occurs on the northern foot slopes and plains of the Blouberg Nature Reserve. The terrain is generally flat with a maximum incline of three degrees. This Major Vegetation Type is associated with the Hutton Soil Form (MacVicar *et al.* 1991) of the Land Type Ae derived from alluvium on sandstone of the Wyllies Poort Geological Formation (Botha 2004a; Patterson & Ross 2004a).

The diagnostic species for this group are presented in species group A (Table 1). This group includes the woody species *Spirostachys africana*. Diagnostic grass species include *Eragrostis lehmanniana* var. *lehmanniana*, *Tragus berteronianus* and *Dactyloctenium aegyptium*, *Pogonarthria squarrosa*. This diagnostic group contains numerous herbaceous species such as *Phyllanthus burchellii*, *Indigofera* species, *Limeum fenestratum*, *Erythrophleum africanum*, *Bulbostylis hispidula* subsp. *pyriformis*, *Ruellia* species, *Indigofera rhytidocarpa*, *Chamaecrista absus*, *Hermannia grisea*, *Tragia minor*, *Corchorus* species, *Talinum crispatum*, *Monechma divaricatum*, *Zornia* species, *Blepharis subvolubilis*, *Limeum viscosum*, *Leucas sexdentata*, *Secamone parvifolia*, *Chamaecrista biensis*, *Asparagus exuvialis* fo. *exuvialis*.

Dominant woody species of this Major Vegetation Type include *Spirostachys africana* (Species Group A), *Commiphora* species, *Grewia flavescens* var. *flavescens* (Species Group F), *Boscia albitrunca* var. *albitrunca*, *Cissus cornifolia*, *Combretum apiculatum* subsp. *apiculatum*, *Combretum mossambicense*, *Commiphora mollis*, *Grewia bicolor* (Species Group H), *Acacia nigrescens*, *Dichrostachys cinerea* subsp. *africana*, *Ehretia rigida*, *Markhamia zanzibarica* and *Sclerocarya birrea* subsp. *caffra* (Species Group L). Dominant grass species include *Eragrostis lehmanniana* var. *lehmanniana* (Species Group A), *Eragrostis rigidior*, *Urochloa mosambicensis* (Species Group L), *Digitaria eriantha*, *Panicum maximum* and *Aristida stipitata* subsp. *graciliflora* (Species Group P). Prominent herbaceous species include *Phyllanthus burchellii* (Species Group A), *Acanthospermum* species, *Arctotis* species, *Aristida congesta* subsp. *congesta*, *Evolvulus alsinoides*, *Hibiscus calyphyllus*,

*Hibiscus praeteritus*, *Sida ovata* (Species Group C), *Cyperus angolensis* (Species Group F), *Solanum panduriforme* (Species Group L) and *Waltheria indica* (Species Group P).

The vegetation of the *Eragrostis lehmanniana* var. *lehmanniana*–*Sclerocarya birrea* subsp. *caffra* BNR Northern Plains Bushveld Major Vegetation Type shows some floristic affinities with the *Acacia mellifera*–*Eragrostis lehmanniana* vegetation class, informally described by Smit (2000) as part of the Eastern Kalahari Thornveld. Shared prominent species within the BNR Northern Plains Bushveld and the *Acacia mellifera*–*Eragrostis lehmanniana* vegetation class include the grasses *Eragrostis lehmanniana*, *Pogonarthria squarrosa* and *Schmidtia pappophoroides*. A shared prominent woody species is *Boscia albitrunca*. However, these five species all show wide distribution ranges and exhibit wide ecological tolerance and adaptation within the sandveld areas of southern Africa, and are therefore not exclusive to the Blouberg Arid Mountain Bushveld. This Major Vegetation Type shares some of the drought-resistant woody species with the *Adansonia digitata*–*Acacia nigrescens* Soutpansberg Arid Northern Bushveld Major Vegetation Type, such as *Commiphora mollis*, *Combretum apiculatum*, *Boscia albitrunca* var. *albitrunca*, *Grewia bicolor*, *Combretum mossambicense*, *Commiphora africana*, *Dichrostachys cinerea* subsp. *africana* and *Acacia nigrescens*. These species are also commonly found in the *Adansonia*–Mixed Thornveld (14e) (Acocks 1953), the *Adansonia digitata*–*Colophospermum mopane* Rugged Veld (Gertenbach 1983) and the *Commiphora*–*Terminalia prunioides* community (Louw 1970).

## **2. *Euclea divinorum*–*Acacia tortilis* BNR Southern Plains Bushveld Major Vegetation Type**

The *Euclea divinorum*–*Acacia tortilis* BNR Southern Plains Bushveld Major Vegetation Type is restricted to the plains foot slopes south of the Blouberg within the BNR. The terrain is generally flat with a slope that varies between one to five degrees. It is predominantly associated with the Hutton Soil Form (MacVicar *et al.* 1991), derived from alluvium on sandstone of the Ae Land Type from the Wyllies Poort Geological Formation (Botha 2004a; Patterson & Ross 2004a).

Other Soil Forms associated with this Major Vegetation Type are of less importance. The Oakleaf and Valsrivier Soil Forms (MacVicar *et al.* 1991) are associated with alluvium, sand and calcrete of the Quaternary Deposits of the Ia Landtype (Botha 2004a). The Glenrosa and Mispah Soil Forms (MacVicar *et al.* 1991) of the Fc Landtype (Botha 2004a) are associated with basalt of the Letaba Geological Formation in the Lebombo Group–Karoo Sequence, as well as amphibolite, metapelite of the Malala Drift group. The Mispah, Avalon and Hutton Soil Forms (MacVicar *et al.* 1991) of the Bc Landtype (Botha 2004a) are associated with leucocratic migmatite and gneiss, grey and pink hornblende–biotite gneiss, grey biotite gneiss, minor muscovite–bearing granite, pegmatite and gneiss of the Hout River Gneis Geological Formation, as well as metapelite of the Bandelierskop Complex.

The diagnostic species for this group are presented in species group B (Table 1). The diagnostic woody species characterizing the communities of this Major Vegetation Type are *Combretum imberbe*, *Rhus leptodictya* and *Schotia brachypetala*. Diagnostic grass species include *Enteropogon macrostachyus* and *Aristida congesta* subsp. *barbicollis*. Diagnostic herbaceous species within this group are *Lepidagathis scabra*, *Rhinacanthus xerophilus*, *Melhania prostrata* and *Corbichonia decumbens*.

Dominant woody species of this Major Vegetation Type include *Acacia tortilis* subsp. *heteracantha*, *Lantana rugosa*, *Rhus leptodictya* (Species Group C), *Grewia flavescens* var. *flavescens* (Species Group F), *Combretum apiculatum* subsp. *apiculatum*, *Grewia bicolor* var. *bicolor* (Species Group H), *Acacia nilotica*, *Euclea divinorum* (Species Group K), *Acacia nigrescens*, *Dichrostachys cinerea* subsp. *africana*, *Ehretia rigida*, *Eragrostis rigidior* (Species Group L), *Ziziphus mucronata* (Species Group P). Dominant grass species include *Enteropogon macrostachyus* (Species Group B), *Aristida congesta* subsp. *congesta*, *Aristida adscensionis* (Species Group C), *Aristida* species (Species Group D), *Eragrostis rigidior*, *Urochloa mosambicensis* (Species Group L), *Enneapogon cenchroides* and *Panicum maximum* (Species Group P). Prominent forbs include *Hibiscus praeteritus*, *Sida ovata*, *Blepharis integrifolia* (Species Group C), *Tephrosia purpurea* (Species Group E), *Cyperus angolensis* (Species Group F) and *Solanum panduriforme* (Species Group L).

The *Euclea divinorum*–*Acacia tortilis* BNR Southern Plains Bushveld Major Vegetation Type is regarded as a variant of the *Rhus leptodictya*–*Acacia tortilis* Bushveld of the *Acacietaalia rehmannianae*–*tortilis* of the *Acacienea nilotico*–*tortilis* of the *Panico maximi*–*Acacietaea tortilis* described by Winterbach (1998) and Winterbach *et al.* (2000) for the north-western savanna of South Africa. Acocks (1953) describe similar vegetation as the Knoppiesdoring Veld (13b) of the Other Turf Thornveld (13). It also compares floristically with the *Acacia tortilis*–*Panicum maximum*–*Ziziphus mucronata* major plant community of the Waterberg (Henning 2002). These communities are generally not geographically restricted to a certain part of South Africa, but occur in a patchy distribution where conditions are favourable. Important taxa binding these communities together are *Acacia tortilis* subsp. *heteracantha* *Rhus leptodictya*, *Grewia* species, *Acacia nilotica*, *Euclea divinorum*, *Acacia nigrescens*, *Dichrostachys cinerea* subsp. *africana*, *Ehretia rigida*, *Eragrostis rigidior*, *Ziziphus mucronata*, *Aristida* species *Eragrostis rigidior*, *Urochloa mosambicensis* and *Panicum maximum*.

### **3. *Englerophytum magalismontanum*–*Combretum molle* BNR Mountain Bushveld Major Vegetation Type**

The *Englerophytum magalismontanum*–*Combretum molle* BNR Mountain Bushveld Major Vegetation Type can be described as the mountain bushveld component of the BNR. This Major Vegetation Type is restricted to the higher lying mountainous terrain of the BNR, ranging from 975–1465 m above sea level. West of the BNR the Blouberg rises to 2051 m above sea level, where more temperate vegetation types occur (Van Jaarsveld & Hardy 1991).

Slope ranges from moderate to very steep with northern, southern and eastern aspects. Soils are generally shallow or skeletal (<100 mm), and associated with Mispah and Glenrosa Soil Forms (MacVicar *et al.* 1991) of the Fa Land Type (Botha 2004a; Patterson & Ross 2004a). The underlying geology is dominated by pink quartzite and minor conglomerate of the Wyllies Poort Geological Formation of the Soutpansberg Group.

The diagnostic species for this group are presented in species group D (Table 1). Diagnostic woody species include *Combretum zeyheri* and an *Elephantorrhiza*

species. The diagnostic grass species include *Loudetia filifolia*, *Trichoneura grandiglumis* and *Aristida* species. Diagnostic herbaceous species include *Rhynchosia vendae*, a *Dalechampia* species and *Tricliceras schinzii*.

Dominant woody species of the *Englerophytum magalismontanum*–*Combretum molle* BNR Mountain Bushveld include *Combretum zeyheri*, *Elephantorrhiza* species (Species Group D), *Commiphora* species (Species Group F), *Burkea africana*, *Pseudolachnostylis maprouneifolia* (Species Group O), *Strychnos madagascariensis* (Species Group P), *Combretum molle*, *Englerophytum magalismontanum*, *Hyperacanthus amoenus*, *Mimusops zeyheri*, *Rhus magalismontanum* subsp. *coddii*, *Vangueria infausta* subsp. *infausta* and *Vitex rehmannii* (Species Group U). Dominant grass species include *Aristida* species, *Loudetia filifolia*, *Trichoneura grandiglumis* (Species Group D), *Digitaria eriantha*, *Enneapogon cenchroides*, *Panicum maximum* and *Schmidtia pappophoroides* (Species Group P). Prominent herbaceous species include *Rhynchosia vendae* (Species Group D), *Cheilanthes involuta*, *Tephrosia purpurea* (Species Group E), *Cyperus angolensis* (Species Group F) and *Waltheria indica* (Species Group P).

The *Englerophytum magalismontanum*–*Combretum molle* BNR Mountain Bushveld Major Vegetation Type shares floristic elements with the *Englerophyto magalismontani*–*Acaciea caffrae* of the Waterberg and Magaliesberg described by Winterbach *et al.* (2000). It shares many of the relatively drought tolerant species associated with the *Rhus rigida* var. *rigida*–*Rhus magalismontanum* subsp. *coddii* Soutpansberg Cool Mistbelt Major Vegetation Type, lacking some of the more mesic species recorded within the mistbelt of the SC. The central variation of the Bankenveld (Acocks 1953) and the Rocky Highveld Grassland of the Grassland Biome (Bredenkamp & Van Rooyen 1996) share limited floristic and structural elements with the *Rhynchosia vendae*–*Englerophytum magalismontanum* Blouberg Moist Mountain Bushveld Major Vegetation Type. Although the vegetation structure of the *Diplorhynchus condylocarpon*–*Englerophytum magalismontanum* Rocky Slope community of the Waterberg Biosphere (Henning 2002) is very similar to that of the Blouberg Moist Mountain Bushveld, the floristic composition differs considerably.

#### 4. *Adansonia digitata*–*Acacia nigrescens* Soutpansberg Arid Northern Bushveld

##### Major Vegetation Type

The *Adansonia digitata*–*Acacia nigrescens* Soutpansberg Arid Northern Bushveld Major Vegetation Type is confined to the rain–shadow northern ridges of the SC. Due to the wide range of topographic and edaphic conditions found within this Major Vegetation Type, it contains a complex of very diverse plant communities. Despite the diversity of these plant communities, most are adapted to prolonged water–stress conditions and unpredictable rainfall events. These drought events are likely to be the main driving factors behind the vegetation structure and species composition of the various plant communities within this major vegetation type.

This Soutpansberg Arid Northern Bushveld Major Vegetation Type is associated with the Clovelly Soil Form (MacVicar *et al.* 1991) of the Ae, Ag, Ia, Ib, and Fa Land Types derived from sandstone, quartzite and conglomerate of the Wyllies Poort Geological Formation, basalt from the Musekwa Geological Formation, as well as from narrow diabase intrusions or dykes within the Wyllies Poort Geological Formation (Botha 2004b; Patterson & Ross 2004b). The Ia Land Type in particular, is associated with the Aeolian sands (Kalahari sand) covering the Musekwa sediments at the foot of the mountain.

The vegetation structure can generally be described as open woodland (Edwards 1983), with a very sparse field layer. This is especially true during dry cycles, when only the most hardy perennial grass and herbaceous species survive. The woody layer ranges from open along the deeper well-drained sandy soils of the northern plains, to sparse along the shallower clayey foot slopes and around the saltpan.

The diagnostic species for this group are presented in species group G (Table 1). Diagnostic woody species characterizing the communities of this Major Vegetation Type along the northern sandy plains include *Adansonia digitata*, *Boscia foetida* subsp. *rehmanniana*, *Commiphora glandulosa*, *Commiphora tenuipetiolata*, *Cordia monoica*, *Blepharis diversispina*, *Grewia flava*, *Grewia subspathulata*, *Grewia villosa* and *Grewia hexamita*. Diagnostic woody species along the basaltic clay foot-slopes are *Kirkia acuminata*, *Maerua parvifolia*, *Maerua edulis*, *Terminalia prunioides*, *Cassia abbreviata*, *Sterculia rogersii* and *Commiphora viminea*. Although *Tribulus*

*terrestris* was recorded as a relatively strong diagnostic herbaceous species for the group, due to its status as a pioneer annual herbaceous species that dominates disturbed patches, it is not recommended as a reliable indicator species for the Soutpansberg Arid Northern Bushveld. Instead, *Sansevieria aethiopica* and *Ledebouria apertiflora* should be seen as more reliable perennial herbaceous indicator species for this Major Vegetation Type.

Prominent woody species of this Major Vegetation Type include *Grewia hexamita*, *Commiphora glandulosa*, *Blepharis diversispina*, *Adansonia digitata* (Species Group G), *Commiphora mollis*, *Combretum apiculatum* (Species Group H), *Hibiscus meyeri* (Species Group M), *Acacia nigrescens*, *Dichrostachys cinerea* and *Grewia monticola* (Species Group P). Although none of the grass species could be labelled as prominent during the time of the surveys, the most dominant grass species included *Panicum maximum* and *Schmidtia pappophoroides* (Species Group P). Forbs recorded from the poorly developed field layer are *Tephrosia macropoda*, *Solanum lichtensteinii*, *Ledebouria apertiflora*, *Chamaecrista mimosoides*, *Heliotropium steudneri* (Species Group G), *Hibiscus meyeri*, *Gossypium herbaceum* subsp. *africanum* (Species Group J), *Waltheria indica* (Species Group P) and *Pellaea calomelanos* var. *calomelanos* (Species Group T).

The *Adansonia digitata*–*Acacia nigrescens* Soutpansberg Arid Northern Bushveld Major Vegetation Type has been described by Acocks (1953) as the *Adansonia*–Mixed Thornveld variant (14e) of the Arid Sweet Bushveld (14). Due to the scale at which these Veld Types were mapped, Acocks' (1953) description includes more variation along the lower laying microphyllous plains between the Blouberg and Soutpansberg Mountain Ranges and less along the foot slopes of these mountains. The *Adansonia*–Mixed Thornveld variant (14e) described by Acocks (1953) is therefore very similar to the associations along the northern sandy plains described here under the Soutpansberg Arid Northern Bushveld Major Vegetation Type.

##### **5. *Catha edulis*–*Flueggia virosa* Soutpansberg Moist Mountain Thickets Major Vegetation Type**

The *Catha edulis*–*Flueggia virosa* Moist Mountain Thickets Major Vegetation Type is a mixture of plant communities situated at a variety of different altitudes. They are,



however, all associated with soils of a high clay content and relatively moist conditions. Even during dry cycles, the moisture-laden air from the south–east ensures at least some orographic rain and moisture during the summer months. These plant communities are primarily confined to the steep southern slopes where igneous rock in the form of basalt and diabase settled after flowing through the cracks and tears in the upper sedimentary rock layers. However, it also contains plant communities associated with the illuvial clays found in some of the valleys cutting through the mountain ridges.

It is associated with the Shortlands Soil Form (MacVicar *et al.* 1991) derived from basalt and tuff associated with the Fa Land Type of the Sibasa Geological Formation, as well as from narrow diabase intrusions or dykes associated with the Ib Land Type of the Wylties Poort Geological Formation (Botha 2004b; Patterson & Ross 2004b).

The vegetation structure can be described as low closed thickets (Edwards 1983), with no definite separation between the tree and shrub layers. The woody layer contains a mixture of trees and shrubs ranging from 1.5–4 m in height. A very high percentage canopy cover (>80%) blocks sunlight from reaching the understory to prevent the establishment of a dense field layer.

This Major Vegetation Type is characterised by a high diversity of trees and shrubs. The diagnostic species are presented in species group I (Table 1) and include woody species from relatively moist thickets and wet riverine thickets such as *Catha edulis*, *Grewia occidentalis*, *Dovyalis zeyheri*, *Acalypha glabrata*, *Dombeya rotundifolia*, *Rhus pentheri*, *Carissa edulis*, *Rhoicissus tridentata* subsp. *tridentata*, *Senna petersiana*, *Diospyros lycioides*, *Berchemia zeyheri*, *Dovyalis caffra*, *Capparis tomentosa*, *Euphorbia ingens*, *Acacia ataxacantha*, *Euclea undulata*, *Pavetta schumanniana*, *Acacia rehmanniana*, *Gymnosporia senegalensis*, *Acokanthera oppositifolia*, *Mystroxydon aethiopicum* subsp. *schlechteri*, *Rhus pyroides*, *Bridelia mollis*, *Clerodendrum glabrum* var. *glabrum*, *Ekebergia capensis*, *Allophylus africanus* var. *africanus*, *Tarchonanthus camphoratus*, *Maerua caffra*, *Coddia rudis*, *Lippia javanica*, *Jasminum multipartitum*, *Combretum hereroense*, *Acacia caffra*, *Euclea crispa* subsp. *crispa*, *Olea europaea* subsp. *africana*, *Bridelia micrantha*, *Buddleja saligna*, *Cussonia natalensis*, *Ficus sycomorus* subsp. *sycomorus*, *Scolopia*

*zeyheri*, *Canthium inerme*, *Buddleja salviifolia*, *Podocarpus falcatus*, *Pyrenacantha grandiflorus*, *Canthium mundianum*, *Ficus sur*, *Syzygium cordatum*, *Pavetta eylesii*, *Capparis fascicularis* var. *fascicularis* and *Acacia gerrardii* var. *gerrardii*. The recorded diagnostic succulent species listed in species group I occur generally wide spread throughout South Africa and include *Aloe greatheadii* var. *greatheadii*, *Sansevieria hyacinthoides* and *Aloe marlothii* subsp. *marlothii*. Diagnostic grass species recorded from the poorly developed field layer are *Brachiaria deflexa*, *Eragrostis superba*, *Panicum deustum*, *Setaria megaphylla* and *Bothriochloa insculpta*. Diagnostic herbaceous species include *Commelina benghalensis*, *Christella guenziana*, *Cyperus albostriatus*, *Solanum tettense* var. *renschii*, *Dicliptera heterostegia*, *Cyperus sphaerospermus*, *Bulbostylis burchellii*, *Barleria gueinzii* and *Justicia flava*.

Other prominent woody species include *Flueggia virosa* subsp. *virosa*, *Acacia karroo*, *Gymnosporia buxifolia* (Species Group K), *Ehretia rigida* (Species Group L), *Ziziphus mucronata* (Species Group P), *Heteropyxis natalensis*, *Zanthoxylum capense* (Species Group S), *Combretum molle* (Species Group U) and *Maytenus undata* (Species Group X). Only a few shade tolerant grass and herbaceous species are prominent within this Major Vegetation Type such as *Brachiaria deflexa*, *Panicum deustum*, *Setaria megaphylla* (Species Group I) and *Panicum maximum* (Species Group P). The shaded conditions also favour fern species such as *Thelypteris gueinziana* (Species Group I) and *Pellaea calomelanos* var. *calomelanos* (Species Group T).

Acocks (1953) considered this Major Vegetation Type one of the many variants of the Sourish Mixed Bushveld (19) and the North-eastern Mountain Sourveld (8). Due to its association with the narrow intrusive basalt, tuff and diabase dykes, it is often difficult to map this Major Vegetation Type when dealing with coarse- or small-scale vegetation studies. The southern-most ridge of the mountain with its large southern basalt slope is one of the few extensive and mapable areas with this Major Vegetation Type.

The strong mixture of temperate and sub-tropical plant species reflects the gradient of plant communities up the southern slopes of the SC. While those communities along

the warm and relatively humid footslopes are very tropical, the plant communities of clayey depressions along the cooler higher lying areas tend to contain many temperate species. The lower lying sub-tropical plant communities seem to be unique in their species composition and structure. The higher lying temperate communities compare with the Hillside scrub of the Transitional *Cymbopogon–Themeda* Veld (49) of the Pure Grassveld Types described by Acocks (1953). They share species such as *Acacia karroo*, *Acacia caffra*, *Grewia occidentalis*, *Ehretia rigida*, *Euclea crispa* subsp. *crispa*, *Olea europaea* subsp. *africana*, *Buddleja saligna*, *Buddleja salviifolia*, *Rhus pyroides*, *Tarchonanthus camphoratus*, *Diospyros lycioides*, *Ziziphus mucronata*, *Dombeya rotundifolia* and *Cussonia* species. These temperate clay communities of the SC also share some floristic links with the riverine woodland *Ziziphomucronatae–Acacietum karroo* described by Brown (1997). According to Du Preez & Bredenkamp (1991), Bezuidenhout *et al.* (1994) and Winterbach (1998), the *Acacia karroo*-dominated vegetation of the southern African grassveld and savanna should be classified as a separate syntaxonomical class. The high lying clay communities along the southern slopes of the SC may be classified as part of this proposed class.

#### **6. *Diplorhynchus condylocarpon–Burkea africana* Soutpansberg Leached Sandveld Major Vegetation Type**

The *Diplorhynchus condylocarpon–Burkea africana* Leached Sandveld Vegetation Type is confined to the warmer northern slopes of the mountain, as well as some of the more arid southern slopes along the northern most ridges of the mountain range, which falls within the rain-shadow zone of the mountain.

It is associated with the Mispah and Hutton Soil Forms (MacVicar *et al.* 1991) derived from sandstone, quartzite and conglomerate associated with the Ae, Fa, and Ib Land Types of the Wyllies Poort Geological Formation (Botha 2004b; Patterson & Ross 2004b). One plant community in particular is associated with deep regic sands of the Namib Soil Form, which is of an Aeolian origin from the Kalahari (Brandl 2002). It also includes the vegetation associated with the almost bare sheets of exposed rock against the warm northern slopes.

The plant communities of this Major Vegetation Type occur on both very shallow and very deep sands of the relatively dry landscapes of the SC. The shallow soils are

situated on steep rocky inclines, while the deep sands are associated with relatively high lying flat plateaus. The combination of the underlying nutrient poor quartzite parent material and the eluviation of silt and clay particles from these well drained sandy soils, have left this system extremely nutrient poor.

With the exception of the plant communities associated with the rock sheets, the Leached Sandveld communities are relatively poor in plant species diversity. The diagnostic species for this group are presented in Species Group M (Table 1). It is characterized by diagnostic woody species such as *Elephantorrhiza burkei*, *Diplorhynchus condylocarpon*, *Ochna pulchra*, *Grewia retinervis* and *Strychnos pungens*. Diagnostic grass species include *Centropodia glauca*, *Eragrostis pallens*, *Schizachyrium jeffreysii*, *Eragrostis gummiflua*, *Aristida canescens* subsp. *ramosa*, *Aristida diffusa* and *Loudetia flavida*. The herbaceous layer is sparse and species poor and contained some weak indicator species such as *Selaginella dregei*, *Cineraria parvifolia* and *Tephrosia longipes*.

Prominent woody species include *Pseudolachnostylis maprouneifolia*, *Burkea africana* (Species Group O), *Strychnos madagascariensis*, *Terminalia sericea* (Species Group P), *Xerophyta retinervis* (Species Group R) and *Vitex rehmannii* (Species Group U). Locally dominant grass species include *Centropodia glauca*, *Eragrostis pallens*, *Schizachyrium jeffreysii*, *Eragrostis gummiflua*, *Aristida canescens* subsp. *ramose*, *Aristida diffusa*, *Loudetia flavida* (Species Group M), *Stipagrostis uniplumis* var. *uniplumis*, *Enneapogon cenchroides*, *Schmidtia pappophoroides*, *Aristida stipitata* (Species Group P), and *Loudetia simplex* (Species Group R). Some of the locally prominent herbaceous species include *Selaginella dregei*, *Portulaca kermesina*, *Tephrosia longipes*, *Indigofera cryptantha* var. *cryptantha*, *Orthosiphon labiatus*, *Isoglossa hypoestiflora*, *Anacampteros subnuda* (Species Group M), *Waltheria indica* (Species Group P), *Corchorus kirkii*, *Commelina africana*, *Myrothamnus flabellifolius* (Species Group R) and *Pellaea calomelanos* var. *calomelanos* (Species Group T).

Acocks (1953) described the various plant communities of the *Diplorhynchus condylocarpon*–*Burkea africana* Soutpansberg Leached Sandveld Vegetation as variations of the Mixed *Terminalia*–*Dichapetalum* Veld (18b) of the Mixed Bushveld

(18). The *Burkea africana*–*Setaria lindenberghiana* Major Community described by Van Staden (2002) and Van Staden & Bredenkamp (2005), the *Barleria bremekampii*–*Diplorhynchus* Tree Savanna (Coetzee *et al.* 1976), as well as the *Burkea africana*–*Setaria sphacelata* Undulating Plains, Foothills, Terraces and Plateaus Community and the *Terminalia sericea*–*Eragrostis pallens* Deep Sandy Lowlands Community described by Henning (2002) from the Waterberg area share many diagnostic species with the *Diplorhynchus condylocarpon*–*Burkea africana* Soutpansberg Leached Sandveld Major Vegetation Type of the SC. The coarse vegetation described by Van Den Berg (1993) of the Sour and Mixed Bushveld emphasises the heterogeneity of these Veld Types. The Soutpansberg Leached Sandveld Major Vegetation Type share numerous diagnostic species with the *Terminalia sericeae*–*Combretetea apiculati* described by Winterbach (1998) and Winterbach *et al.* (2000). More specifically, this Major Vegetation Type shares numerous diagnostic species with the *Burkea africana*–*Perotis patens* Woodland Alliance described by Van der Meulen (1979).

Due to the nutrient poor nature of this Major Vegetation Type, grazing and browsing fodder production is generally low. Most of the landscape is homogeneous, resulting in low species richness. However, the more rugged landscapes with their higher diversity of micro-habitats are relatively rich in species.

#### **7. *Rhus rigida* var. *rigida*–*Rhus magalismontanum* subsp. *coddii* Soutpansberg Cool Mistbelt Major Vegetation Type**

The *Rhus rigida* var. *rigida*–*Rhus magalismontanum* subsp. *coddii* Mistbelt Vegetation of the SC is situated above 1200 m above sea level and is confined to the mistbelt region. It is associated with Glenrosa and Mispah Soil Forms (MacVicar *et al.* 1991) derived from sandstone, quartzite and conglomerate associated with the Fa and Ib Land Types of the Wyllies Poort Geological Formation (Botha 2004a; Patterson & Ross 2004a). The Champagne Soil Form (MacVicar *et al.* 1991) was recorded along some of the localized high laying wetlands and peatlands.

This Major Vegetation Type is associated with the rugged landscapes of the upper plateaus and crests of the SC. The soils derived from the underlying sandstone and quartzite are can be described as extremely shallow, coarse sands. The depth of the

soil and the extent of rock-cover determine the vegetation structure and species composition within this Major Vegetation Type. During the rainfall season these plant communities are covered in mist on an almost daily basis, contributing towards the abundance of rock- and bark-lichens and bryophytes. The combination of frequent orographic rain and mist during the summer months leaves the available pockets of soil among the rock sheets drenched and sometimes flooded for extended periods. The deeper soils pockets and the half weathered matrix of saprolite within the mistbelt can be regarded as the sponge areas, which slowly release water to feed mountain streams over prolonged periods. During the dry season, the shallow sandy soils rapidly dry out. The local and surrounding topography of the landscape plays a major role in the rate of desiccation of water retention of a specific patch of soil. Extended flooding is often a product of water seepage into an area from the surrounding catchments and sponge areas. In cases where water floods the soil for most of the year, wetlands and peatlands have formed. However, these high lying wetlands and their surrounding catchments are prone to severe periodic droughts. These fluctuating moisture conditions favour those plant species with strategies such as the ephemerals, xerophytes and succulents.

Structurally, the plant communities of the Mistbelt Major Vegetation Type are extremely diverse. It includes peatlands, low open grasslands and islands of short thickets or bush clumps (Edwards 1983). Due to this structural diversity within this Major Vegetation Type, diagnostic species comprise of a mixture of inconspicuous perennials, and do not include any dominant or abundant species. Diagnostic species for this group are presented in species group Q (Table 1). The most important diagnostic woody species include *Rhus rigida* var. *rigida*, *Helichrysum kraussii*, *Cryptolepis cryptolepioides* and *Parinari capensis* subsp. *capensis*. Other, less constant woody indicator species of this Major Vegetation Type include *Olea capensis* subsp. *enervis*, *Syzygium legatii*, *Aloe arborescens*, *Rothea myricoides*, *Euclea linearis*, *Rhus tumulicola* var. *meeuseana*, *Olinia rochetiana*, *Combretum moggii*, *Vangueria soutpansbergensis*, *Tarenna supra-axillaris*, *Protea caffra* subsp. *caffra*, *Elephantorrhiza elephantina*, *Tetradenia riparia*, *Apodytes dimidiata* subsp. *dimidiata*, *Protea roupelliae* subsp. *roupelliae*, *Lopholaena coriifolia*, *Coptosperma rhodesiacum*, *Ekebergia pterophylla* and *Myrsine africana*. Diagnostic grass species include *Melinis nerviglumis*, *Brachiaria serrata*, *Setaria sphacelata* var. *torta*,

*Trachypogon spicatus* and *Elionurus muticus*. Diagnostic herbaceous species recorded are *Fadogia homblei*, *Coleochloa setifera*, *Rhynchosia monophylla*, *Senecio barbertonicus*, *Crassula swaziensis*, *Khadia borealis*, *Vernonia natalensis*, *Dicoma anomala*, *Plectranthus neochilus*, *Gnidia cuneata*, *Eulophia ensata*, *Pteridium aquilinum*, *Kalanchoe sexangularis*, *Aristea woodii*, *Anthospermum welwitsch*, *Vernonia oligocephala*, *Pentanisia prunelloides* subsp. *prunelloides*, *Senecio oxyriifolius*, *Ipomoea oblongata*, *Helichrysum cerastioides*, *Bulbostylis contexta*, *Hypoxis hemerocallidea* and *Asparagus falcatus*.

Prominent species within this collection of diverse communities include the woody species *Rhus rigida* var. *rigida*, *Helichrysum kraussii*, *Cryptolepis cryptolepioides*, *Parinari capensis* subsp. *capensis* (Species Group Q), *Mimusops zeyheri*, *Combretum molle*, *Englerophytum magalismontanum*, *Rhus magalismontanum* subsp. *coddii* (Species Group U) and *Maytenus undata* (Species Group X). Locally prominent grass species include *Melinis nerviglumis*, *Brachiaria serrata*, *Setaria sphacelata* var. *torta*, *Trachypogon spicatus*, *Elionurus muticus* (Species Group Q) and *Loudetia simplex* (Species Group R). Due to the topographic heterogeneity of this Major Vegetation Type, and the diversity of plant communities it contains, prominent herbaceous species are only locally prominent and may include *Fadogia homblei*, *Coleochloa setifera*, *Rhynchosia monophylla*, *Senecio barbertonicus*, *Crassula swaziensis*, *Khadia borealis*, *Vernonia natalensis*, *Dicoma anomala*, *Plectranthus neochilus*, *Gnidia cuneata*, *Wahlenbergia undulata*, *Hypoxis argentea* var. *argentea*, *Pteridium aquilinum*, *Kalanchoe sexangularis*, *Vernonia oligocephala*, *Pentanisia prunelloides* subsp. *prunelloides*, *Hypoxis hemerocallidea* (Species Group Q) and *Pellaea calomelanos* var. *calomelanos* (Species Group T).

The *Rhus rigida* var. *rigida*–*Rhus magalismontanum* subsp. *coddii* Mistbelt Vegetation Type of the SC is a mosaic of closed bush clumps from the *Englerophyto magalismontani*–*Acacietea caffrae* in the savannas (Winterbach *et al.* 2000), the patches of high lying low open grasslands from the *Loudetia simplicis*–*Alloteropsidetea semialatae* in the grasslands (Matthews *et al.* 1994), the *Loudetia simplex*–*Aristida aequiglumis* Woodlands, Shrublands and Grasslands (Coetzee 1975) and the *Protea caffra*–*Loudetia simplex* Major Community (Van Staden 2002). The bush clump communities show strong floristic affinities with the *Rhus tumulicola*–

*Aloe arborescens* mist belt bush clumps (Matthews 1991; Matthews *et al.* 1991) of the North-eastern Mountain Sourveld (Acocks 1953) and the *Landolphia capensis*–*Crassula argyrophylla* savanna described by Bredenkamp (1975).

Although the grassland patches share structural similarities with the *Diheteropogono amplexentis*–*Proteetum gagedi* described by Matthews *et al.* (1994) and the *Protea caffra*–*Helichrysum setosum* savanna described by Bredenkamp (1975), they show stronger floristic affinities with the grassland patches of the structurally different *Helichrysum kraussii*–*Englerophytum magalismontanum* bush clump communities described by Matthews (Matthews 1991; Matthews *et al.* 1991).

### **8. *Xymalos monospora*–*Rhus chirendensis* Soutpansberg Forest Major Vegetation Type**

The forests of the SC are confined the southern slopes of the southern most ridges of the mountain. It is associated with the Glenrosa, Mispah and Shortlands Soil Forms (MacVicar *et al.* 1991) derived from basalt, tuff, sandstone, and conglomerate associated with the Fa Landtype of the Sibasa Geological Formation (Botha 2004a; Patterson & Ross 2004a). The soils are generally rich in organic matter and contain relatively high percentages of clay in areas where basalt and tuff form the under lying geological material. Defining the geology and soil formations is often difficult and problematic along this rupture section of the mountain where the upper sedimentary plates have torn and became mixed with volcanic material (Barker 1979, 1983; Bumby 2000). When vegetation is removed, soil erosion becomes a major problem along the steep southern slopes with its relatively shallow soils and high rainfall.

This Major Vegetation Type is dependant on the orographic rain driven onto the southern slopes by a south-easterly wind during summer. The evergreen high forests are confined to the mistbelt of the mountain, which reaches down as far as 1380 m above sea level (Geldenhuys & Murray 1993). Deciduous shrub forest forms a fire resistant ecotone of thickets, which extend to below the mistbelt zone of the southern slopes.

The diagnostic species for this Major Vegetation Type are presented in Species Group V (Table 1). The diagnostic woody species include *Xymalos monospora*, *Zanthoxylum*



*davyi*, *Celtis africana*, *Nuxia floribunda*, *Rhoicissus tomentosa*, *Kiggelaria africana*, *Vepris lanceolata*, *Rapanea melanophloeos*, *Rothmannia capensis*, *Brachylaena discolor*, *Ficus craterostoma*, *Combretum kraussii*, *Trichilia dregeana*, *Trimeria grandifolia*, *Drypetes gerrardii* and *Oxyanthus speciosus* subsp. *gerrardii*.

Other prominent woody species include *Diospyros whyteana* (Species Group W), *Maytenus undata*, *Rhus chirindensis*, *Cussonia spicata* (Species Group X) and *Maesa lanceolata* (Species Group Y).

A recent classification of forest vegetation data by Von Maltitz *et al.* (2003) lumped the forest communities of the Blouberg, Soutpansberg, North Eastern Escarpment, Mariepskop and Barberton regions under the name Northern Mistbelt Forest. These Afrotemperate forests have been described by numerous authors and under various different names; Afrotemperate forest (Cooper 1985, White 1978), Temperate, Transitional and Scrub Veld Types (Acocks 1953), Uplands Vegetation (Edwards 1967, Moll 1976), Interior Forests (MacDevette *et al.* 1989), Montane *Podocarpus* Forest (Cooper 1985, Edwards 1967, Moll 1976), Highland Sourveld (Acocks 1953), Mist Belt Mixed *Podocarpus* Forest (Cooper 1985, Edwards 1967, Moll 1976) and Natal Mist Belt Ngongoni Veld (45) (Acocks 1953).

The evergreen *Xymalos monospora*–*Rhus chirindensis* Soutpansberg Forest Vegetation, which forms part of the Northern Mistbelt Forests, share some floristic affinities with the Highland Sourveld the Dohne Sourveld (44b) and the Natal Mist Belt 'Ngongoni Veld (45), as well as the Coastal Tropical forest patches associated with the 'Ngongoni Veld (5) (Acocks 1953). Important shared species include the valuable timber species *Podocarpus falcatus*, *Podocarpus latifolius* and *Ocotea kenyensis*. These species have been exploited for financial gain to such an extent that they are no longer dominant indicator species within all the Soutpansberg forest associations. They now only occur in relatively high abundances where difficult terrain inhibited people from removing these species. This phenomenon of low cover–abundance values of the two *Podocarpus* species within the SC is therefore an artefact of human intervention (McCracken 1986, Obiri *et al.* 2002). The historical prominence of the two *Podocarpus* species therefore justifies the Soutpansberg forests' inclusion into the temperate forest category (Acocks 1953). The

*Widdringtonia nodiflora* dominated cliff forests along the scarp faces of the southern slopes of the Soutpansberg share some weak floristic and structural affinities with the Highland Sourveld (Acocks 1953) and the *Widdringtonia nodiflora*–*Podocarpus latifolius* Short Forest of the Waterberg (Van Staden & Bredenkamp 2006).

### **Ordination**

The rich diversity of plant communities within the SC and BNR is closely associated with the topographic and geologic diversity of these areas. The variation in topography and geology of the landscape contributes to variation in localised climatic conditions, seasonal precipitation, predictability of precipitation, processes and tempos of weathering, degrees of nutrient leaching from the soil, accumulation tempo of organic matter in the soil and plant available moisture in the soil. An ordination of the available vegetation data on these two areas revealed distinct groupings of relevés, which in turn represent different Major Vegetation Types and plant communities. In order to display and interpret these vegetation groupings in an ecologically meaningful manner, it was decided to separate the two distinct clusters representing the SC and the BNR.

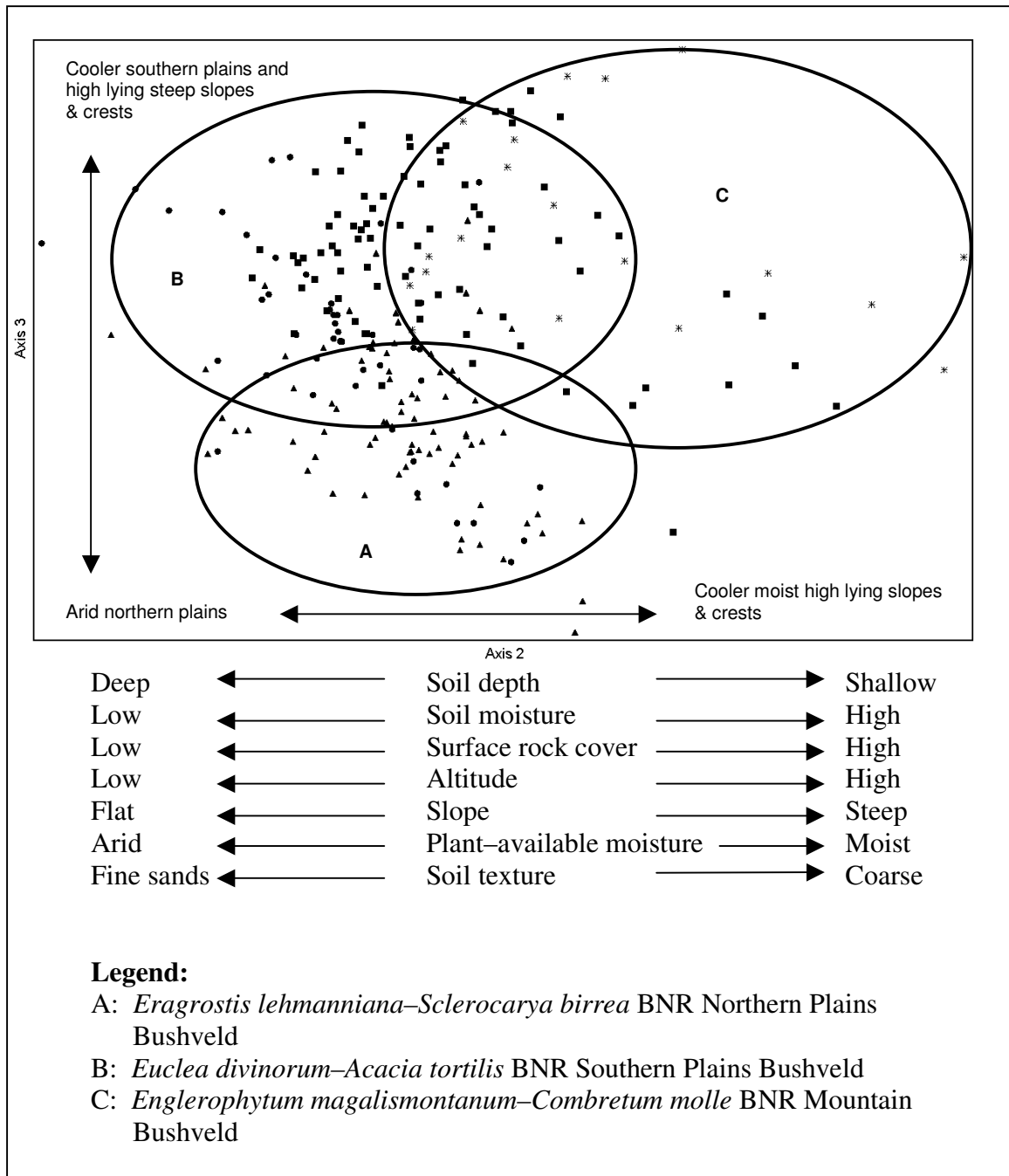
#### *Vegetation of the Blouberg Nature Reserve*

The scatter diagram (Fig. 7) displays the distribution of relevés along the second and third ordination axes. The vegetation units are represented as groups and their distribution on the scatter diagram corresponds with certain physical environmental conditions. The lack of any distinct groupings with some relative distance between groupings reflects the floristic similarities among the plant communities of the BNR. However, numerous environmental gradients could be correlated with the distribution of the plant communities and individual relevés along the x- and y-axes.

The second axis (eigen value = 0.583), orientated along the x-axis, represents gradients in soil depth, soil moisture, surface rock cover, altitude, slope, plant-available moisture and soil texture. Those plant communities along the left side of the diagram represent the dry flat areas with relatively deep fine-grained soils. These include the *Eragrostis lehmanniana* var. *lehmanniana*–*Sclerocarya birrea* subsp. *caffra* BNR Northern Plains Bushveld and the *Euclea divinorum*–*Acacia tortilis* BNR Southern Plains Bushveld. Those plant communities along the right side of the

diagram represent the wetter steep, rocky slopes with relatively shallow coarse sandy soils. These are mostly represented by the *Englerophytum magalismontanum*–*Combretum molle* BNR Mountain Bushveld.

The third axis (eigen value = 0.392), orientated along the y–axis, represents gradients in plant–available moisture, soil depth and slope. Those plant communities along the top of the diagram represent the wetter steep, rocky slopes with relatively shallow coarse sandy soils, represented by the *Englerophytum magalismontanum*–*Combretum molle* BNR Mountain Bushveld. Those plant communities along the bottom of the diagram represent the dry flat areas with relatively deep fine–grained soils, represented by the *Eragrostis lehmanniana* var. *lehmanniana*–*Sclerocarya birrea* subsp. *caffra* BNR Northern Plains Bushveld and the *Euclea divinorum*–*Acacia tortilis* BNR Southern Plains Bushveld.



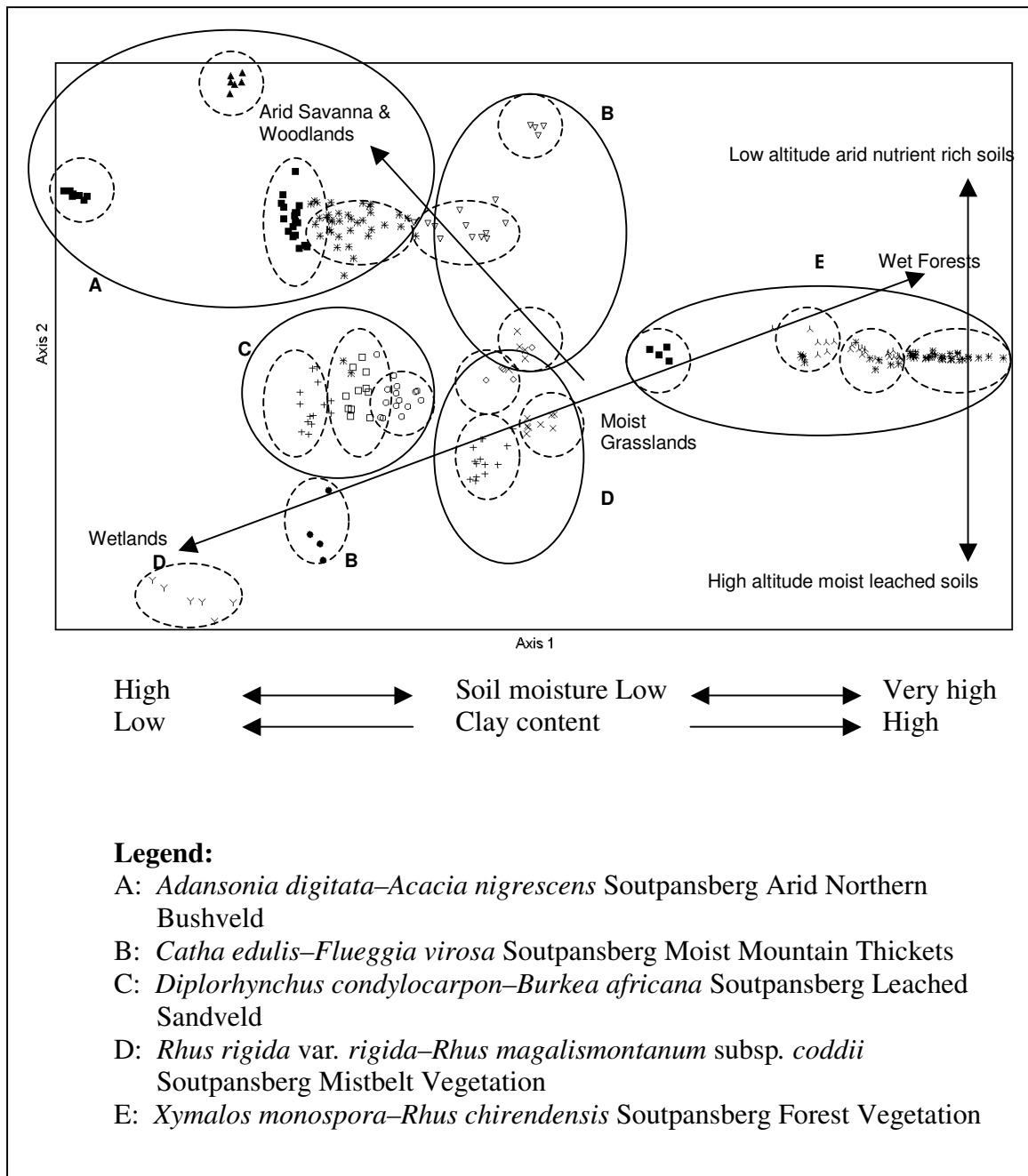
**Fig. 6.** Relative positions of relevés along the second and third axes of the ordination of the vegetation data from the Blouberg Nature Reserve (DECORANA, Hill 1979b).

### Vegetation of the Soutpansberg Conservancy

The scatter diagram (Fig. 8) displays the distribution of relevés along the first and second ordination axes. The vegetation units are represented as groups and their distribution on the scatter diagram corresponds with certain physical environmental conditions. The very distinct groupings of relevés within the virtual space of the scatter-plot are a good indication of the unique nature of each of the different plant communities it represents. These pronounced ordination clusters re-enforce those groupings created by the numerical classification done on the available vegetation data of the SC. Numerous environmental gradients could be correlated with the distribution of the plant communities and individual relevés along the x- and y-axes. The different associations described in Chapters 6, 7, 8 and 9 are indicated with broken lines and different symbols.

The first axis (eigen value = 0.950), orientated along the x-axis, represents gradients in plant-available soil moisture and soil clay content. Those plant communities along the left side of the diagram represent the arid areas with relatively sandy soils. These include the *Adansonia digitata*-*Acacia nigrescens* Soutpansberg Arid Northern Bushveld and *Diplorhynchus condylocarpon*-*Burkea africana* Soutpansberg Leached Sandveld. Those plant communities along the right side of the diagram represent the relatively moist areas with soils with a higher clay content. These include the *Catha edulis*-*Flueggia virosa* Soutpansberg Moist Mountain Thickets and the *Xymalos monospora*-*Rhus chirendensis* Soutpansberg Forest Vegetation.

The second axis (eigen value = 0.641), orientated along the y-axis, represents gradients in plant-available moisture, soil mineral content and altitude. Those plant communities along the top of the diagram represent the lower lying mineral rich arid areas of the SC. These include the *Adansonia digitata*-*Acacia nigrescens* Soutpansberg Arid Northern Bushveld and *Catha edulis*-*Flueggia virosa* Soutpansberg Moist Mountain Thickets. Those plant communities along the bottom of the diagram represent the moist high altitude Major Vegetation Types on the leached soils of the SC. This includes the *Rhus rigida* var. *rigida*-*Rhus magalismsontanum* subsp. *coddii* Soutpansberg Mistbelt Vegetation.



**Fig. 7.** Relative positions of relevés along the first and second axis of the ordination of the vegetation data from the Soutpansberg Conservancy (DECORANA, Hill 1979b).

## Conclusion

The results of both the ordination and the classification indicate a considerable difference between the vegetation types of the Blouberg Nature Reserve and the Soutpansberg Conservancy (Fig. 6 & 7; Table 1). Species Group F is restricted to the BNR showing the relationship among the BNR plant communities and indicates that it has unique vegetation. Although individual Major Vegetation Types of the SC are exceptionally unique (with many diagnostic species e.g. Species Groups G, I, M, Q and V), no species groups emphasize the coherence of the vegetation of the SC. On the contrary, Species Groups H, K, L, O, P, U and Y indicate the relationship of SC plant communities with some BNR communities.

This array of heterogeneous vegetation types and plant communities all fall within an estimated area of only 108 000 hectares (1 080 km<sup>2</sup>). The conservation of such a biological hotspot should be a provincial, national and international priority (Walker 1989; Wessels *et al.* 2003; UNESCO 2002). The Soutpansberg Conservancy and the Blouberg Nature Reserve represent numerous Major Vegetation Types of the SCBD, and form the core of present conservation efforts. These nature reserves should act as benchmark sites for the monitoring of the impact of development on the surrounding unprotected areas.

The observed diversity in vegetation patterns is the result of the region's high spatial variation (topography, geology, pedology, extreme localised climate patterns) as well as the region's high temporal variability (irregular climatic cycles, periodic stochastic events) (Gibson *et al.* 2004). In addition to the environmental factors influencing the observed vegetation and floristic patterns, certain regions of the study area have been altered through intense anthropogenic activities over prolonged periods of time. The stochasticity with which humans have impacted on this environment has led to even higher levels of spatial and temporal variation in habitat heterogeneity. Numerous stone tools and artefacts indicate that humans have occupied the region on a periodic basis since the Early Stone Age (Coles & Higgs 1975). More recent times have seen cultures and civilisations such as the Khoisan (Eloff 1979), the people of Mapungubwe (Huffman 1996), the Vhenda people (Nemudzivhadi 1985), and European settlers utilizing the region for hunting, livestock farming and the cultivation of crops (Voigt & Plug 1984).

It is important to identify and to understand the major ecological processes driving this particular ecosystem in order to conserve and manage it effectively (Wessels *et al.* 2003). The major vegetation patterns seen among the plant communities of the SC and BNR are largely related to the availability of soil-moisture and the rate of environmental desiccation (Bond *et al.* 2003). The underlying geology and soils, as well as altitude seem to play only secondary roles in the community composition of these event-driven systems (Krebs 2001). Soil moisture availability within the study area is governed mainly by four environmental factors: (1) the amount of precipitation of atmospheric moisture, (2) the rate of water loss through evaporation (3) the soil's ability to capture and keep moisture within reachable depth of the plant roots, (4) as well as the available soil water capacity (Kramer 1969; Scott & Le Maitre 1998). White (1995) defines the available soil water capacity as the amount of water in a soil that is available for plant growth. The upper limit is set by the soil's field capacity (water-saturated soil), while the lower limit is set by the volumetric water content value at which plants lose turgor and wilt, or the permanent wilting point.

The SC and BNR are surrounded by many poverty stricken informal settlements of rural Venda. These people rely on the savanna and forest plant communities to supply grazing, fuel wood, timber and agricultural produce. Approximately 58% of the province's land area is used for grazing, and 22% used for agriculture (Hoffman & Ashwell 2000). The Limpopo Province contributes considerably to the formal economy through its ecotourism, livestock, mining, timber and export fruit and vegetable industries (Adams *et al.* 2000). Sadly though, this culturally, historically and naturally rich and diverse province of South Africa is a poverty stricken region (Shackleton & Shackleton 2000). The province's rural communities are often in a struggle for survival against the frequent and severe droughts. This has led to a culture where "if it does not pay, it does not stay" (Goudie 2000). In addition, the ever-expanding population of South Africa is making increasing demands on the natural resources of the Limpopo region. This will inevitably lead to the expansion of agriculture and industry into marginal and ecologically sensitive areas. In order for the government to plan development, management and conservation sensibly, we need the necessary ecological knowledge of the area. Without this baseline information and insight on the region's driving ecological processes and patterns, the



much-needed development of the Limpopo's infrastructure and the utilization of its natural resources will be unsustainable, with only limited short-term benefits for a few selected individuals.

### **Acknowledgements**

We thank the National Research Foundation for funding this project. Thank you to all the landowners within the SC and management of the BNR for access to gather field data. Thank you to Goro Lodge, Lajuma Mountain Retreat, Medike Mountain Reserve, and the Soutpansberg Herbarium for accommodation during fieldwork.

### **References**

- ACOCKS, J.P.H. 1953. Veld types of South Africa. *Memoirs of the Botanical Survey of South Africa* 28: 1–192. (3<sup>rd</sup> edition with updated names and illustrations published in 1988 as *Memoirs of the Botanical Survey of South Africa* 57: 1–146).
- ADAMS, M., B. COUSINS and S. MANONA 2000. Land tenure and economic development in rural South Africa constraints and opportunities Pp. 111–128. *In: COUSINS, B. (ed.). At the Crossroads Land and Agrarian Reform in South Africa into the 21st Century, School of Government, University of the Western Cape, Cape Town.*
- ANDERSON, J.M. (ed.) 2001. Towards Gondwana Alive, Vol.1 (Assoc. eds. BERGER, L., M. DE WIT, L.P. FATTI, E. HOLM, B. RUBIDGE, G. SMITH, F. THACKERAY and B. VAN WYK) Gondwana Alive Society, Pretoria.
- BARKER, O.B. 1979. A contribution to the geology of the Soutpansberg Group, Waterberg Supergroup, northern Transvaal. MSc thesis, University of the Witwatersrand, Johannesburg.
- BARKER, O.B. 1983. A proposed geotectonic model for the Soutpansberg Group within the Limpopo Mobile Belt, southern Africa. *In: VAN BILJON, W.J. and J.H. LEGG (eds.). The Limpopo Belt. Geological Society of South Africa* 8: 181–190.
- BERGER, K., E. CRAFFORD, I. GAIGER, M.J. GAIGER, N. HAHN and I. MACDONALD. 2003. *A first synthesis of the environmental, biological and cultural assets of the Soutpansberg.* Leach Printers & Signs, Makhado.

- BEZUIDENHOUT, H., G.J. BREDENKAMP and G.K. THERON 1994. Phytosociological classes of the western Transvaal grassland, South Africa. *Koedoe* 37: 1–18.
- BOND, W.J., G.F. MIDGLEY and F.I. WOODWARD 2003. What controls South African vegetation – climate or fire? *South African Journal of Botany* 69: 79–91.
- BOTHA, M.J. 2004a. Land types of the map 2228 Alldays. In: MACVICAR, C.N. (ed.). *Memmoirs on the Agricultural Natural Resources of South Africa*. Department of Agriculture and Water Supply, [www.arc.agric.za/institutes/iscw/main/maps/htm](http://www.arc.agric.za/institutes/iscw/main/maps/htm)
- BOTHA, M.J. 2004b. Land types of the map 2328 Pietersburg. In: MACVICAR, C.N. (ed.). *Memmoirs on the Agricultural Natural Resources of South Africa*. Department of Agriculture and Water Supply, [www.arc.agric.za/institutes/iscw/main/maps/htm](http://www.arc.agric.za/institutes/iscw/main/maps/htm)
- BRANCH, W.R. 1988. South African Red Data Book - Reptiles and amphibians. *South African National Scientific Programmes Report* 151.
- BRANDL, G. 2002. The Geology of the Alldays Area. Explanation, Sheet 2228 Alldays, Council for Geoscience South Africa, Pretoria.
- BREDENKAMP, G.J. 1975. 'n Plantsosiologiese studie van die Suikerbosrand-natuurreservaat. MSc thesis, University of Pretoria, Pretoria.
- BREDENKAMP, G.J., A.F. JOUBERT and H. BEZUIDENHOUT. 1989. A reconnaissance survey of the vegetation of the plains in the Potchefstroom-Fochville-Parys Area. *South African Journal of Botany* 55: 199–206.
- BREDENKAMP, G.J. and N. VAN ROOYEN 1996. 34. Rocky Highveld Grassland. P 39. In: LOW, A.B. & A.G. REBELO (eds.). *Vegetation of South Africa, Lesotho and Swaziland*. Department of Environmental Affaire and Tourism, Pretoria.
- BROWN, L.R. 1997. A plant ecological study and wildlife management plan of the Borakalalo Nature Reserve, North-west Province, PhD thesis, University of Pretoria, Pretoria.
- BUMBY, A.J. 2000. The geology of the Blouberg Formation, Waterberg and Soutpansberg Groups in the area of Blouberg Mountain, Northern Province, South Africa. PhD thesis, University of Pretoria, Pretoria.
- COETZEE, B.J. 1975. A phytosociological classification of the Rustenburg Nature Reserve. *Bothalia* 11: 561–580.

- COETZEE, B.J., F. VAN DER MEULEN, S. ZWANZIGER, P. GONSALVES and P.J. WEISSER 1976. A phytosociological classification of the Nylsvlei Nature Reserve. *Bothalia* 12: 137–160.
- COLES, J.M. and E.S. HIGGS 1975. *The archaeology of early man*. Peregrine Books, Great Britain.
- COOPER, K. H. 1985. The conservation status of indigenous forests in Transvaal, Natal and O.F.S., South Africa. Wildlife Society of South Africa, Durban.
- DU PREEZ, P.J. and G.J. BREDENKAMP 1991. Vegetation classes of the southern and eastern Orange Free State (Republic of South Africa) and the highlands of Lesotho. *Navorsing van die Nasionale Meuseum Bloemfontein* 7: 477–526.
- EDWARDS, D. 1967. A plant ecological survey of the Tugela river basin. *Botanical Survey of South Africa Memoir* 36. Town and Regional Planning Commission, Pietermaritzburg.
- ELOFF, J.F. 1979. III *Die kulture van Greefswald – 'n argeologiese studie van die Ystertydperkulture op die plaas Greefswald*. UP Printers, University of Pretoria, Pretoria.
- FOORD, S.H., A.S. DIPPENAAR–SCHOEMAN and M. VAN DER MERWE 2002. A checklist of the spider fauna of the Western Soutpansberg, South Africa (Arachnida: Araneae). *Koedoe* 45(1): 35–43.
- FOORD, S.H. and A.S. DIPPENAAR–SCHOEMAN 2003. Spiders (Araneae). Pp. 45–50. In: BERGER, K., J.E. CRAFFORT, I. GAIGER, M.J., GAIGER, N. HAHN and I. MACDONALD, (eds.). *A first synthesis of the environmental, biological and cultural assets of the Soutpansberg*. Leach Printers & Signs, Makhadu.
- FULS, E.R., G.J. BREDENKAMP, N. VAN ROOYEN and G.K. THERON 1993. The physical environment and major plant communities of the Heilbron–Lindley–Warden–Villiers area, northern Orange Free State. *South African Journal of Botany* 59: 345–359.
- GELDENHUYS, C.J. and B. MURRAY 1993. Floristic and structural composition of Hanglip forest in the Soutpansberg, Northern Transvaal. *South African Forestry Journal* 165: 9–20.
- GERMISHUIZEN, G. and N.L. MEYER. 2003. Plants of southern Africa: an annotated checklist. *Strelitzia* 14: 1–1231.

- GERTENBACH, W.P.D. 1983. Landscapes of the Kruger National Park. *Koedoe* 26: 9–121.
- GIBSON, L.A., B.A. WILSON and J.G. ABERTON 2004. Landscape characteristics associated with species richness and occurrence of small native mammals inhabiting a coastal heathland: a spatial modelling approach. *Biological Conservation* 120: 75–89.
- GOUDIE, A. 2000. *The human impact on the natural environment*. Blackwell Publishers, Oxford.
- HAHN, N. 1994. *Tree list of the Soutpansberg*. Fantique Publishers, Pretoria.
- HAHN, N. 1996. Rubiaceae. A new species of *Vangueria* from the Soutpansberg. *Bothalia* 27(1): 45–48.
- HAHN, N. 1997. Rare and endangered flora of Tshikondeni. In house manuscript of the Tshikondeni Mining Company (Pty) Ltd.
- HAHN, N. 1999. Rubiaceae. A new species of *Pavetta* from the Soutpansberg, South Africa. *Bothalia* 29(1): 107–109.
- HAHN, N. 2002. Endemic flora of the Soutpansberg. MSc thesis, University of Natal, Pietermaritzburg.
- HAHN, N. 2003. Endemic flora. In: BERGER, K., E. CRAFFORD, I. GAIGER, M.J. GAIGER, N. HAHN and I. MACDONALD (eds.). *A first synthesis of the environmental, biological and cultural assets of the Soutpansberg*. Leach Printers & Signs, Makhado.
- HAHN, N. *in prep.* Endemism and biogeography. PhD thesis, University of Pretoria, Pretoria.
- HARRISON, J.A., D.G. ALLAN, L.G. UNDERHILL, M. HERREMANS, A.J. TREE, V. PARKER and C.J. BROWN 1997. *The atlas of southern African birds*. Avian Demography Unit, Bird Life South Africa.
- HENNEKENS, S.M. and J.H.J. SCHAMINEE. 2001. Turboveg, a comprehensive database management system for vegetation data. *Journal of Vegetation Science* 12: 589–591.
- HENNING, B.J. 2000. The relevance of ecosystems to ecotourism in the Waterberg Biosphere Reserve. PhD thesis, University of Pretoria, Pretoria.
- HILL, M.O. 1979a. *TWINSPAN – a FORTRAN program for arranging multivariate data in an ordered two-way table by classification of individuals and attributes*. Cornell University, New York.

- HILL, M.O. 1979b. *DECORANA – a FORTRAN program for detrended correspondence analysis and reciprocal averaging*. Cornell University, New York.
- HOCKEY, P.A.R., W.R.J. DEAN and P.G. RYAN 2005. *Roberts – Birds of Southern Africa*, (7<sup>th</sup> edition). The Trustees of the John Voelcker Bird Book Fund, Cape Town.
- HOFFMAN, T. and A. ASHWELL 2000. *Land degradation: Northern Province fact sheet*. Salty Print.
- HUFFMAN, T. N. 1996. Archaeological evidence for climatic change during the last 2000 years in southern Africa. *Quaternary International* 33: 55–60.
- KENT, M. & P. COKER 1996. *Vegetation description and analysis: a practical approach*. John Wiley & Sons Ltd., Sussex, England.
- KRAMER, P.J. 1969. *Plant & soil water relationships: a modern synthesis*. McGraw–Hill, United States of America.
- KREBS, C.J. 2001. *Ecology: the Experimental Analysis of Distribution and Abundance* (5<sup>th</sup> edition). Benjamin Cummings, San Francisco.
- LOUW, A.J. 1970. Mopane veld noord van die Soutpansberg. DSc thesis, University of Pretoria, Pretoria.
- LUBKE, R.A. and B. MACKENZIE 1996. Afromontane Forest. In: LOW, A.B. & A.G. REBELO (eds.) *Vegetation of South Africa, Lesotho and Swaziland*. Department of Environmental Affairs and Tourism, Pretoria, p 12.
- MACDEVETTE, D.R., D.K. MAC DEVETTE, I.G. GORDON and R.I.C. BARTHOLOMEW 1989. Floristics of the Natal indigenous forests of southern Africa. *Occasional Report* 45. Foundation for Research and Development, Pretoria.
- MACVICAR, C.N., A.T.P. BENNIE and J.M. DE VILLIERS 1991. *Soil classification: A taxonomic system for South Africa*. Department of Agricultural Development, Pretoria.
- MATTHEWS, W.S. 1991. Phytosociology of the North–eastern Mountain Sourveld. MSc thesis, University of Pretoria, Pretoria.
- MATTHEWS, W.S., G.J. BREDEKAMP and N. VAN ROOYEN. 1991. The grassland-associated vegetation of the Black Reef Quartzite and associated large rocky outcrops in the north-eastern mountain sourveld of the Transvaal Escarpment. *South African Journal of Botany* 57: 143–150.

- MATTHEWS, W.S., G.J. BREDEKAMP and N. VAN ROOYEN. 1994. The phytosociology and syntaxonomy of relatively low-altitude areas in the North-eastern Mountain Sourveld, in the eastern Transvaal escarpment region. *Koedoe* 37(2): 73–87.
- MCCRACKEN, D.P. 1986. The indigenous forests of colonial Natal and Zululand. *Natalia* 16: 19–38.
- MACDEVETTE, D. R. 1993. The woody vegetation of the Zululand coastal dunes. Pp. 633–637. In: VAN DER SEJDE (ed.). *South African forestry handbook / Suid-Afrikaanse bosbouhandboek*. Southern African Institute of Forestry, Pretoria.
- MOLL, E.J. 1976. *The vegetation of the Three Rivers region, Natal*. Natal Town and Regional Planning Reports 33. Town and Regional Planning Commission, Pietermaritzburg.
- MUELLER-DOMBOIS, D. and H. ELLENBERG. 1974. Aims and methods of vegetation ecology. Wiley, New York.
- NEMUDZIVHADI, M. 1985. *Lini na Zwini, Thangela ya ndavhuko ya Histori ya Venda*. Thohoyandou Press.
- OBERMEYER, A.A., H.G. SCHWEICKERDT and I.C. VERDOORN 1937. An enumeration of the plants collected in the northern Transvaal. *Bothalia* 3(2): 223–258.
- OBIRI, J.A.F. 2002 Resource quantification, use and sustainable management of coastal forests in the Eastern Cape Province. PhD thesis. University of Natal, Pietermaritzburg.
- OBIRI, J., M. LAWES and M. MUKOLWE 2002. The dynamics and sustainable use of high-value tree species of the coastal Pondoland forests of the Eastern Cape Province, South Africa. *Forest Ecology and Management* 199: 131–148.
- OLIVIER, J. and C.J. RAUTENBACH 2002. The implementation of fog water collection systems in South Africa. *Atmospheric Research* 64(4): 227–239.
- PATTERSON, D.G. and P.G. ROSS 2004a. Land types of the map 2228 Alldays. In: MACVICAR, C.N. (ed.). *Memmoirs on the Agricultural Natural Resources of South Africa*. Department of Agriculture and Water Supply, [www.arc.agric.za/institutes/iscw/main/maps/htm](http://www.arc.agric.za/institutes/iscw/main/maps/htm)
- PATTERSON, D.G. & P.G. ROSS 2004b. Land types of the map 2328 Pietersburg. In: MACVICAR, C.N. (ed.). *Memmoirs on the Agricultural Natural Resources*

- of South Africa. Department of Agriculture and Water Supply, [www.arc.agric.za/institutes/iscw/main/maps/htm](http://www.arc.agric.za/institutes/iscw/main/maps/htm)
- SCHUTTE, J.M. 1971. Die onttrekking van water uit die newellaag en lae wolke by Mrieoskop. S.A. Department of Water Affairs, Division Hydrological Research, Technical note 20: 1–21.
- SCOTT, D.F. and D.C. LE MAITRE 1998. *The interaction between vegetation and groundwater: research priorities for South Africa*. Water Research Commission WRC Report; no. 730/1/98, Pretoria.
- SHACKLETON, C.M and S.E. SHACKLETON 2000. Direct use values of secondary resources harvested from communal savannas in the Bushbuckridge Lowveld, South Africa. *Journal of Tropical Forest Products* 6: 28–47.
- SIEBERT, S.J. 2001. Vegetation on the ultramafic soils of the Sekhukhuneland Centre of Endemism. PhD thesis, University of Pretoria, Pretoria.
- SIEBERT, F., G.J. BREDENKAMP and S.J. SIEBERT. 2003. A comparison of Mopane vegetation in South Africa, Namibia and Zimbabwe. *Bothalia* 33(1): 121–134.
- SMIT, J.H.L. 2000. Phytosociology and veld management of the eastern Kalahari Thornveld. MSc thesis, University of Pretoria, Pretoria.
- SOUTH AFRICAN WEATHER BURO 2004. South African Weather Service, <http://www.weathersa.co.za>
- STIRTON, C.H. 1982. A new species of *Rhynchosia* from Venda. *Bothalia* 14(1): 76–77.
- UNESCO 2002. *Convention concerning the protection of the world cultural and natural heritages*. UNESCO World Heritage Centre, France <http://www.unesco.org>
- VAN DEN BERG, H.M. 1993. Die identifisering en kartering van veldekotopie in die noordwes-Transvaalse suur- en gemengde-bosveld. MSc thesis, University of Pretoria, Pretoria.
- VAN DER MEULEN, F. 1979. Plant sociology of the western Transvaal Bushveld, South Africa: a syntaxonomic and synegological study. *Dissertationes Botanicae* 49: 1–192.
- VAN JAARSVELD, E. and D. HARDY 1991. The Blouberg botanical expedition, with specific reference to the succulent vegetation. *Aloe* 28(3): 78–83.

- VAN ROOYEN, N. and G.J. BREDENKAMP. 1996. 17. Sweet Bushveld. P. 21. In: LOW, A.B. & A.G. REBELO (eds.). *Vegetation of South Africa, Lesotho and Swaziland*. Department of Environmental Affairs and Tourism, Pretoria.
- VAN STADEN, P.J. 2002. An ecological study of the plant communities of Marakele National Park. MSc thesis, University of Pretoria, Pretoria.
- VAN STADEN, P.J. and BREDENKAMP G.J. 2005. Major plant communities of the Marakele National Park. *Koedoe* 48(2): 59–70.
- VAN STADEN, P.J. and G.J. BREDENKAMP 2006. A floristic analysis of forest and thicket vegetation of the Marakele National Park. *Koedoe* 49(1): 15–31.
- VAN WYK, A.E. 1984. A new species of *Combretum* from Venda and taxonomic notes on the section *Angustimarginata* (Combretaceae). *South African Journal of Botany* 3(2): 125–1345.
- VAN WYK, P. 1994. *Field guide to the trees of the Kruger National Park* Struik Publishers, Cape Town.
- VAN WYK, A.E. 1996. Biodiversity of the Maputaland Centre. *The biodiversity of African plants*. Umdaus Press, Pretoria.
- VAN WYK, A.E. and G.F. SMITH 2001. *Regions of floristic endemism in southern Africa*. Umdaus Press, Pretoria.
- VOIGT, E.A. and I. PLUG 1984. Happy Rest: the earliest Iron Age Fauna from the Soutpansberg. *South African Journal of Science* 80: 22–227.
- VON MALTITZ, G.P., L. MUCINA, C. GELDENHUYS, M. LAWES, H. EELEY, H. ADIE, D. VINK, G. FLEMING and T. VOSTER 2003. Classification system for South African Indigenous Forests: an objective classification for the Department of Water Affairs and Forestry. Environmentek report ENV-P-C 2003–017 CSIR, Pretoria.
- WALKER, B. 1989. Diversity and stability in ecosystem conservation. In: WESTERN, D. and M. PEARL (eds.). *Conservation for the twenty-first century*. Oxford University Press, New York.
- WESTOBY, M., B. WALKER and I. NOY-MEIR 1989. Opportunistic management for rangelands not at equilibrium. *Journal of Rangeland Management* 42(4): 266–274.
- WESSELS, K.J., B. REYERS, A.S. VAN JAARVELD and M.C. RUTHERFORD 2003. Identification of potential conflict areas between land transformation and



- biodiversity conservation in north-eastern South Africa. *Agriculture, Ecosystems and Environment* 95: 157–178.
- WHITE, F. 1978. The Afromontane Region. Pp. 463–513. *In*: WERGER, M.J.A. (ed.). *Biogeography and ecology of southern Africa*. Junk, The Hage.
- WHITE, R.E. 1995. *Introduction to the principles and practices of soil science*. Second edition, Blackwell Sciences (Ltd), Oxford.
- WINTERBACH, R. 1998. A phytosociological synthesis of *Acacia tortilis* communities in the north–western savanna of South Africa. MSc thesis, University of Pretoria, Pretoria.
- WINTERBACH, R., G.J. BREDENKAMP, M.S. DEUTSCHLANDER and L. MUCINA 2000. Preliminary syntaxonomic scheme of vegetation classes for the Central Bushveld of South Africa. Pp. 123–127. *In*: WHYTE, P.S., L. MUCINA, J.S. LEPS and E. VAN DER MAAREL (eds.). *Proceedings IAVS Symposium*, Opulus Press, Upsala.