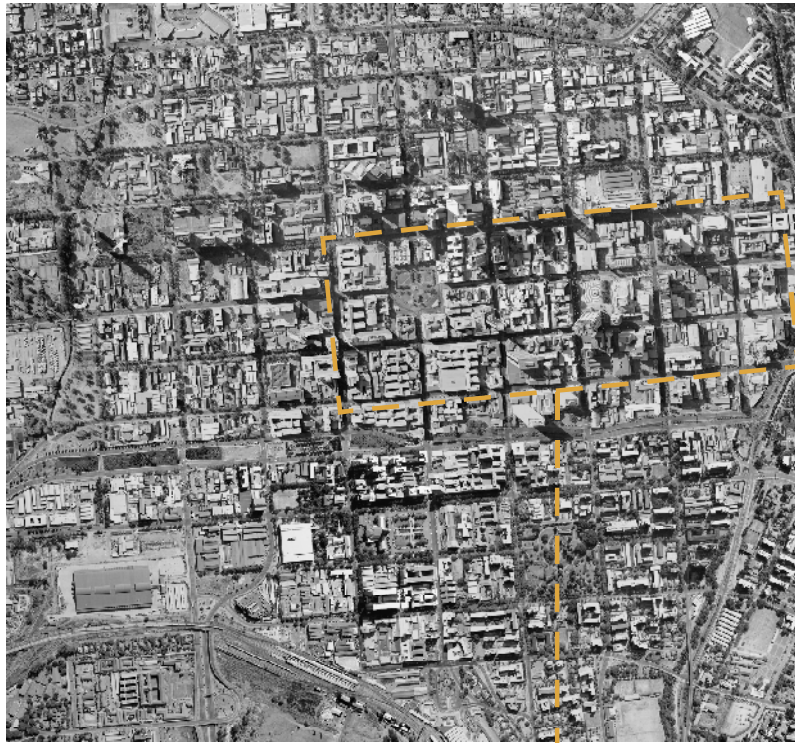
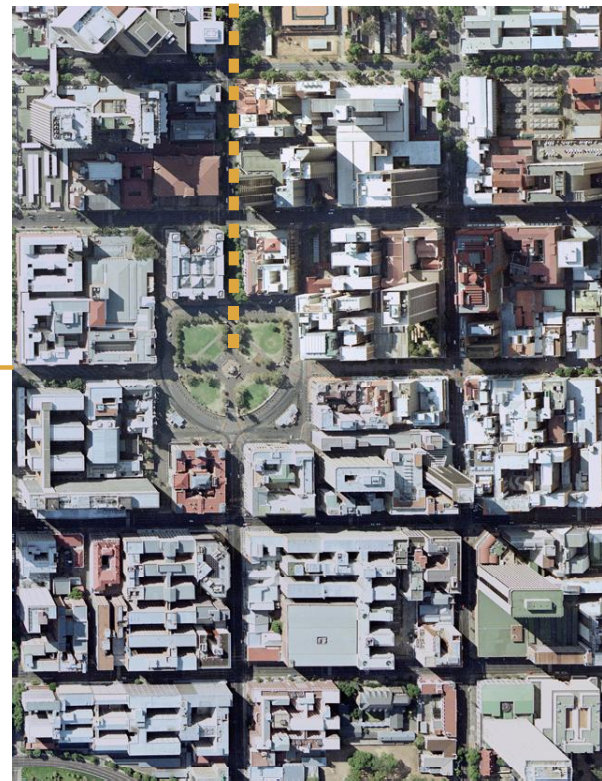




[ - - - - - >> city context ]  
[ - - - - - ]



2.1



2.2

Fig 2.1 aerial view of inner city

Fig 2.2 aerial view of open spaces in the CBD

"In street and city spaces of poor quality, only the bare minimum of activity takes place. People hurry home. In a good city environment, a completely different, broad spectrum of human activities is possible" (GEHL 1987: 13).



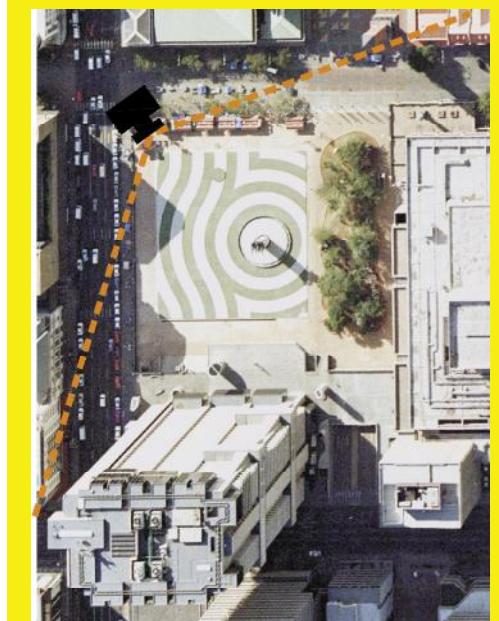


The inner city of Pretoria, as it currently exists, lacks good urban public spaces for the users of the city. The current urban public spaces provide merely the necessary superficial requirements. This includes the traditional open green space, places for sitting and lounging and some vegetation for shading. But this seems to only satisfy the needs of the city user on a level that does not cater for a true experience of being in a city environment.



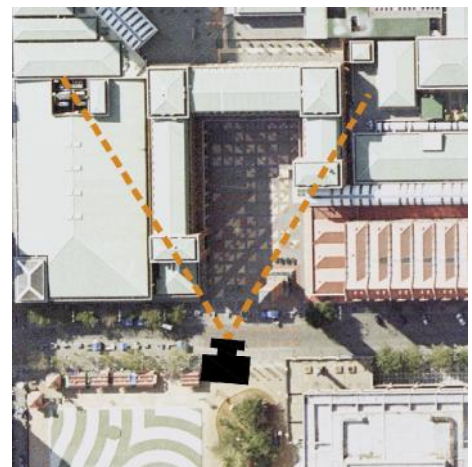
2.3

The spaces between buildings, even though they are the most important elements of the city according to Jan Gehl, are created by the built fabric. This built fabric creates physical and psychological boundaries which in essence defines the edges of open spaces. These spaces come in the form of streets, side-walks, alleys and urban parks. The relationship between the built city fabric and the spaces which they create becomes vitally important. The built fabric's edges are hard. There is little interaction between the open spaces and the buildings which is resulting in harsh city spaces, uncomfortable to be in. The contrast between inside and outside is very apparent, which leads to the feeling of isolation when in the spaces between the buildings. This feeling is encouraging people to get to their destinations as quickly as possible.



2.4

To break down these barriers and give accessibility to the city would create a holistic experience of the city. In order to do this, buildings cannot be demolished in such a way that they expose their interiors but rather to add a new layer onto the many existing layers of the city. This layer would facilitate the interaction between the built fabric and the spaces between the built fabric and allow the people who use the city to have a more legible connection with the spaces in which they move and the city around them. Current open spaces in the city include Church Square, Strijdom Square, Sammy Marks Square, the open public space on the north eastern side of the State Theatre, the open space on the eastern side of Sammy Marks and the open public space in front of the Reserve Bank.



2.5



2.6



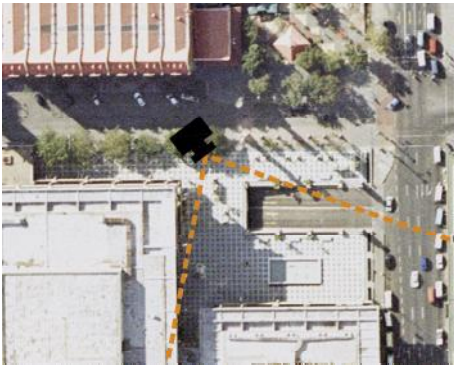
2.7

- Fig 2.3 aerial view of Church Square
- Fig 2.4 aerial view of Strijdom Square
- Fig 2.5 aerial view of Sammy Marks Square
- Fig 2.6 photo of Church Square as indicated in Fig 2.3
- Fig 2.7 photo of Strijdom Square as indicated in Fig 2.4
- Fig 2.8 photo of Sammy Marks Square as indicated in Fig 2.5

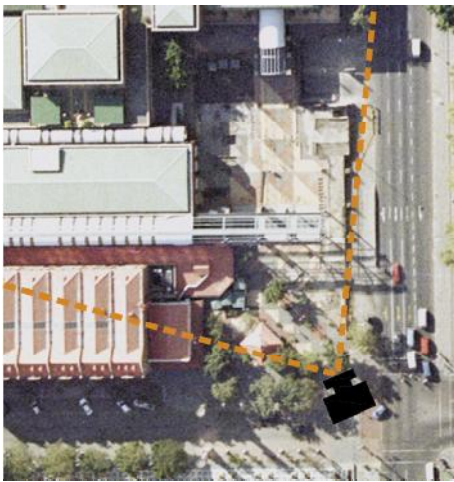


2.8

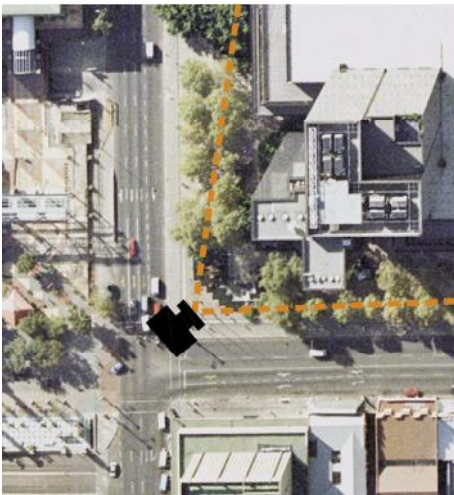




2.9



2.10



2.11



2.12

- Fig 2.9 aerial view of open space next to the State Theatre
- Fig 2.10 aerial view of open space next to Sammy Marks Square
- Fig 2.11 aerial view of public space in front of Reserve Bank
- Fig 2.12 photo of open space next to the State Theatre as indicated in Fig 2.9
- Fig 2.13 photo of open space next to Sammy Marks Square as indicated in Fig 2.10
- Fig 2.14 photo of public space in front of the Reserve Bank as indicated in Fig 2.11



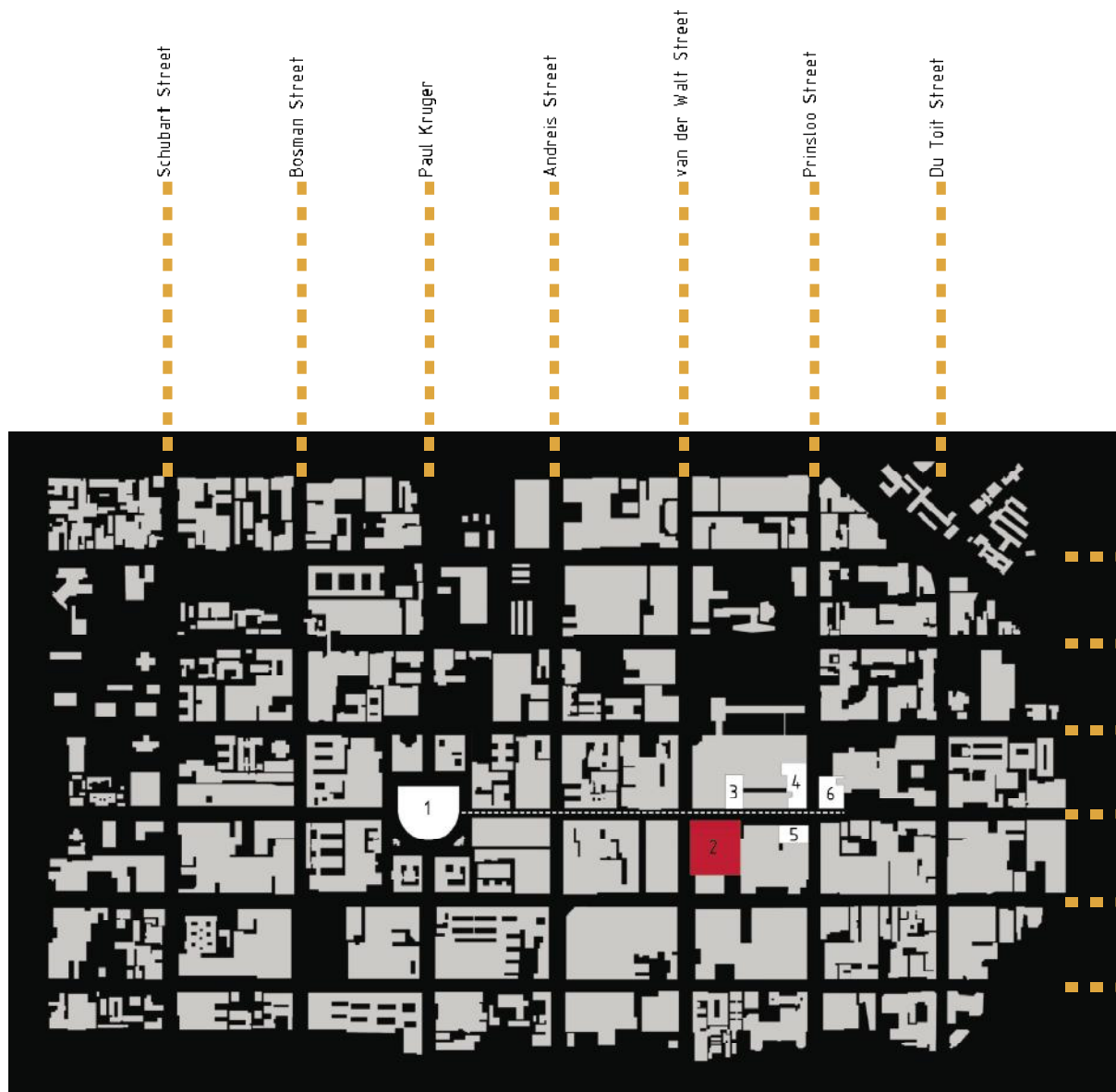
2.13



2.14



Strijdom Square was chosen as the site (see Fig 2.4 and 2.7) for this dissertation as it provides the necessary requirements for an architectural intervention. Currently the square is not functioning as a public space. It has become a 'white elephant' in the inner city. The site suffers from all the characteristics mentioned before and there is no interaction between the built fabric and those spaces which it creates. The square is meant to function as a public space but has few people using it. It is a mostly barren open space in the inner city but has not been altered. This is possibly due to its historical significance.



2.15 1-Church Square; 2-Strijdom Square (site); 3-Sammy Marks Square; 4-open space next to Sammy Marks Square  
5- open space next to State Theatre; 6-public space in front of the Reserve Bank

Fig 2.15    linkages of open public spaces in the

