

6.6 UNIT DESIGN:

The units are designed in such a manner that only minimal internal walls are necessary. The internal walls of the apartment can be of robust chipboard wall partitioning or similar system, so that the owner will be able to insert or remove infill walls according to their needs. Units can be easily joined to from bigger family apartments.

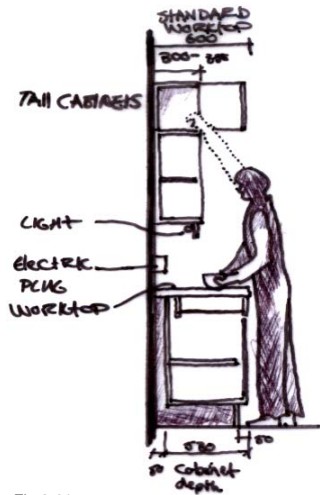


Fig 6-91

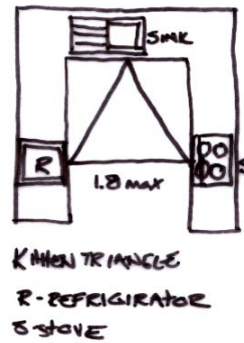


Fig 6-93 Kitchen triangle

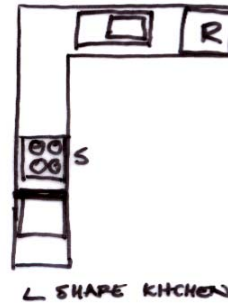


Fig 6-93 L Shape kitchen.

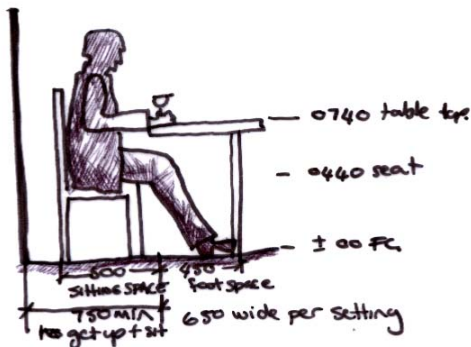


Fig 6-92

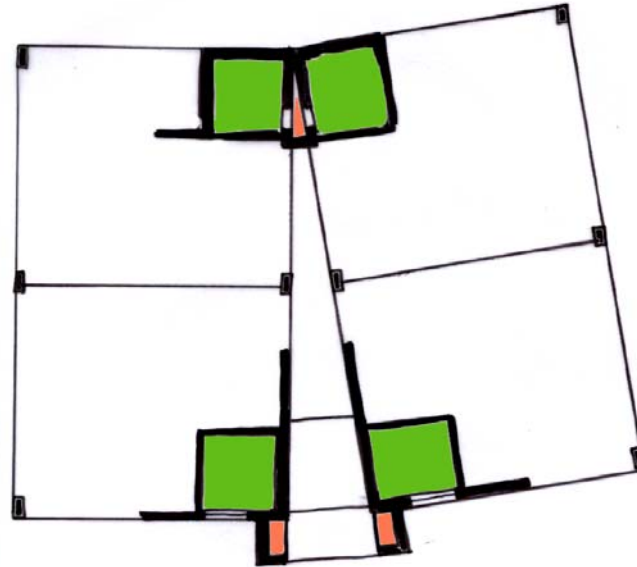


Fig6-95 Diagram of position of wetcore and ducts.

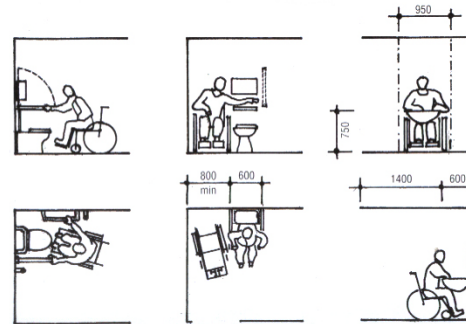


Fig 6-96 Designing for disability

GEZA EASY FIT BATHROOM UNIT



Fig 6-96

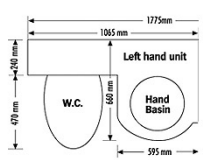
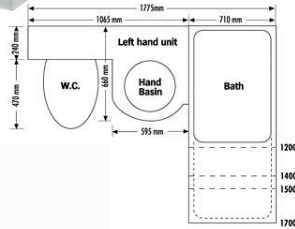


Fig 6-97

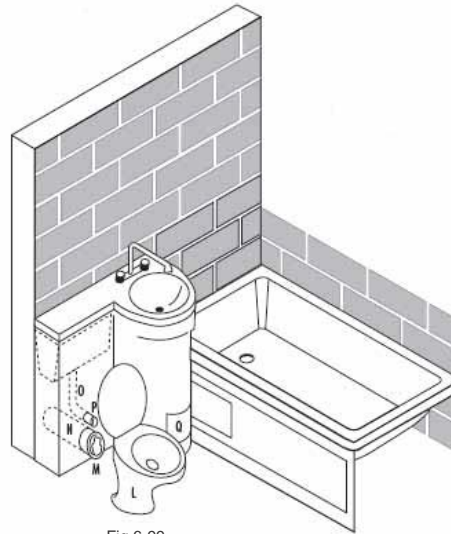


Fig 6-99

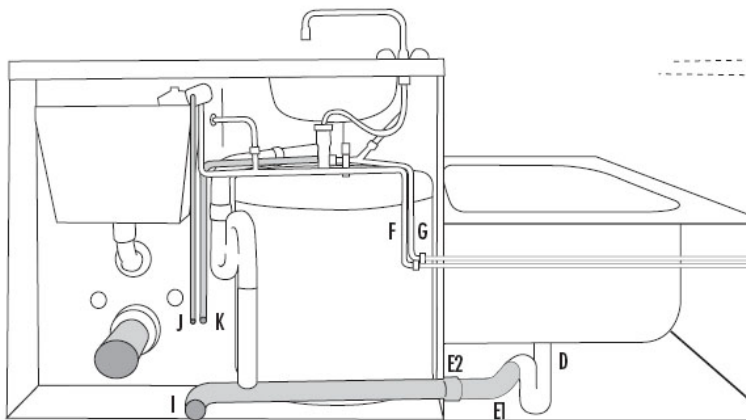


Fig 6-98

GEZA unit

Bath

The GEZA Easy Fit Bathroom is a product designed and manufactured by Modular Plumbing Units cc.

It has been designed in response to the need for a compact, better quality and more efficient plumbing solution for the lower end of the housing market. This market has traditionally suffered from high priced, poor quality and aesthetically unappealing plumbing products.

The GEZA Easy Fit Bathroom was designed with a view to providing a product that was space saving and quick and easy to install and maintain. No wet trades are required for installation and all components are high quality, easily available and accessible for maintenance.

The first prototype was completed in April 1999 and a patent and design application was submitted for registration. The first 14 GEZA units were installed in a high rise building in Hillbrow, Johannesburg in September 1999 for the Johannesburg Housing Company.

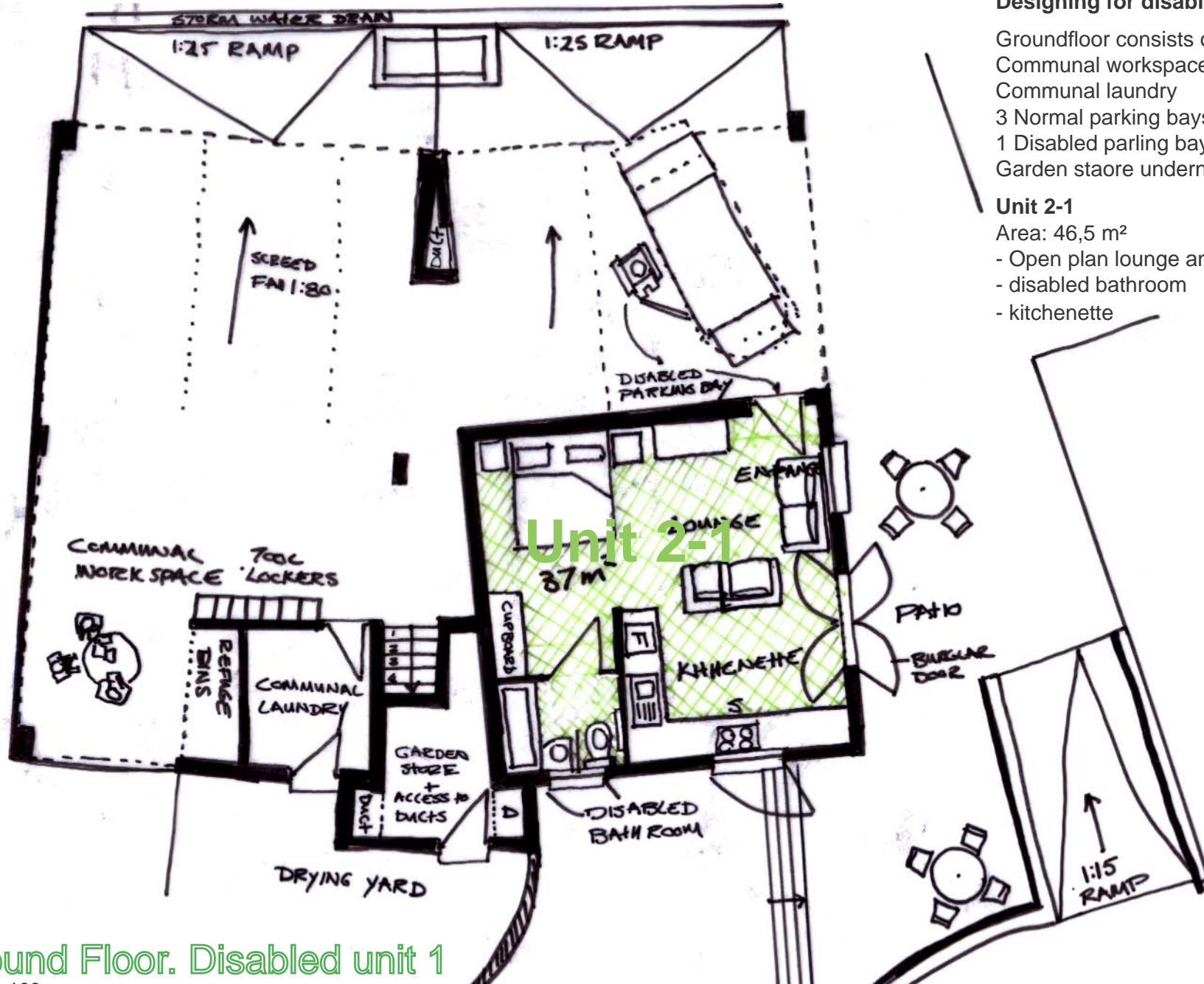
The Department of Trade and Industry (DTI) helped finance the development of the GEZA Easy Fit Bathroom through its Support Program for Industrial Innovation (SPII). The SPII program was designed to support new and innovative South African products with manufacturing and export potential. The GEZA Easy Fit Bathroom won an award from the DTI in 2002 and 2003 for being one of the top ten performing products supported by the SPII program.

The GEZA Easy Fit Bathroom was also nominated as a finalist for the Technology Top100 awards presented in November 2000 by the State President, Thabo Mbeki and the Minister of Trade and Industry, Alec Erwin.

The first large scale installation of the GEZA Easy Fit Bathroom was in Pretoria, Gauteng. City Properties (Pty) Ltd, one of the largest property owners and developers in the Pretoria city centre, specified the GEZA unit for installation in four high rise buildings that they were converting from offices into residential apartments. By February 2001, more than 580 GEZA units had been installed in these four high rise buildings.

ADVANTAGES:

- No chasing of walls
- No on-site storage
- Easy maintenance
- Minimal on site installation
- Installation cost saving



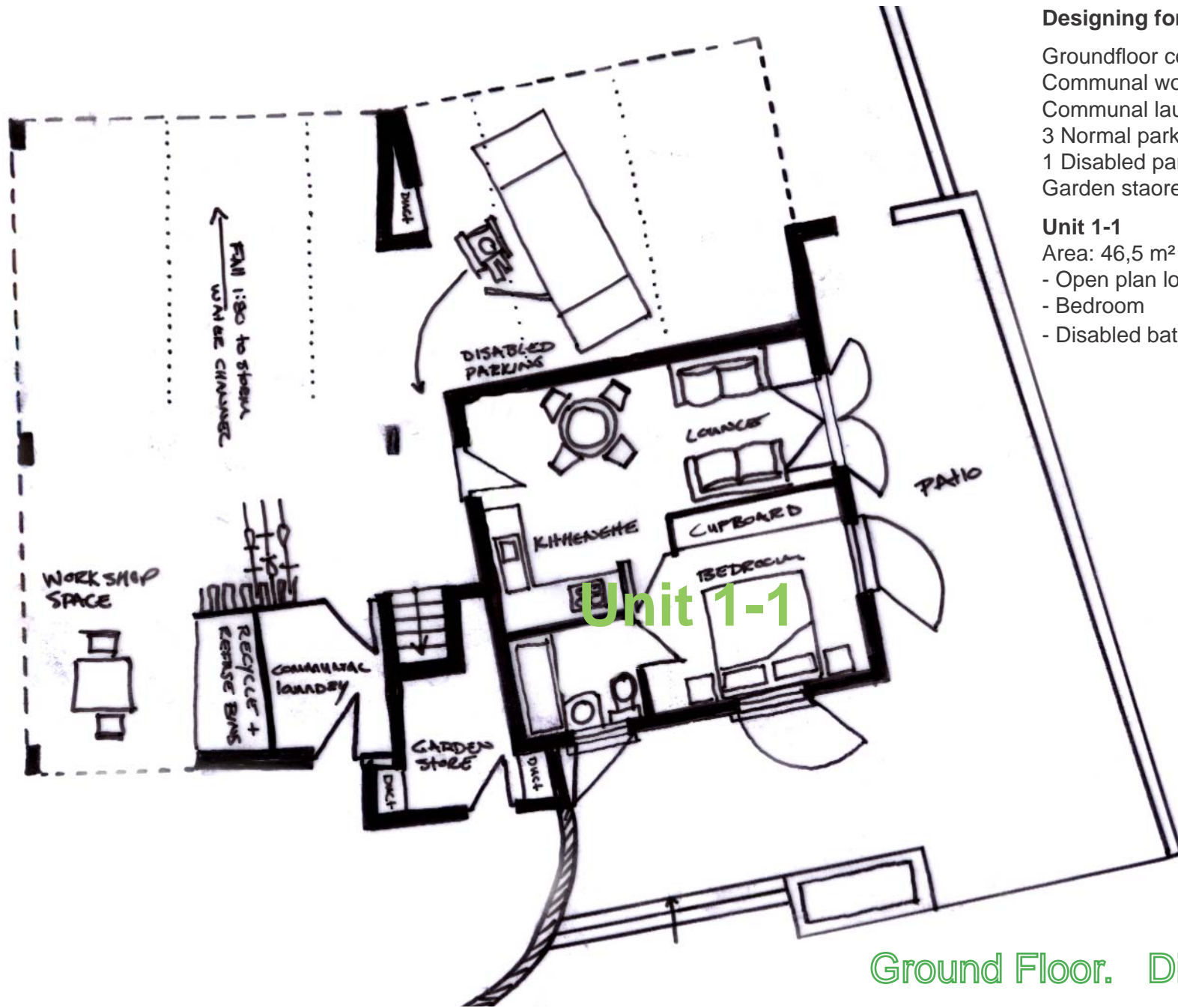
Designing for disability
 Groundfloor consists of:
 Communal workspace
 Communal laundry
 3 Normal parking bays
 1 Disabled parking bays
 Garden store underneath stairs

Unit 2-1
 Area: 46,5 m²
 - Open plan lounge and bedroom
 - disabled bathroom
 - kitchenette

Unit 2-1

Ground Floor. Disabled unit 1

Scale 1;100



Designing for disability

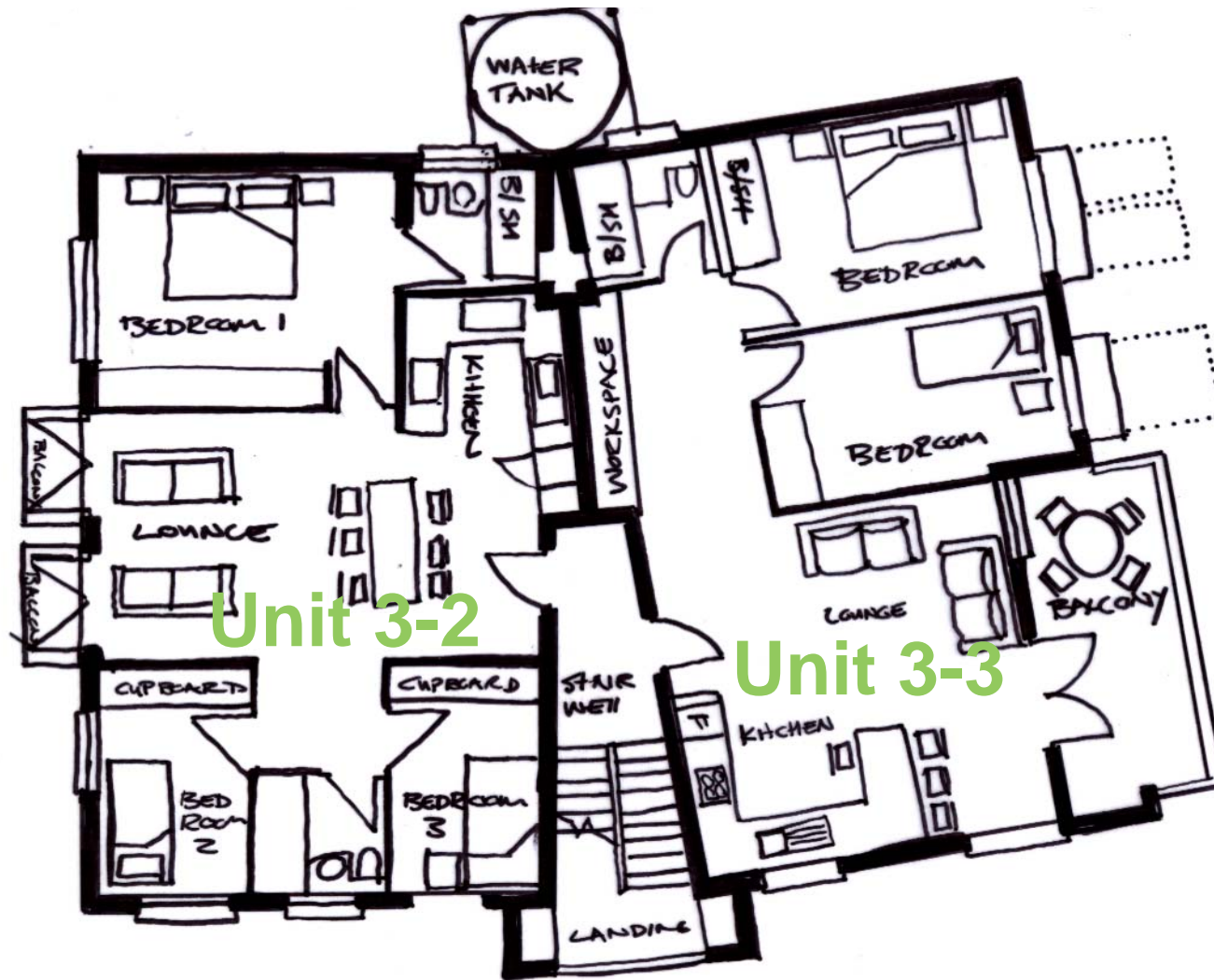
- Groundfloor consists of:
- Communal workspace
 - Communal laundry
 - 3 Normal parking bays
 - 1 Disabled parking bays
 - Garden store underneath stairs

Unit 1-1

- Area: 46,5 m²
- Open plan lounge and kitchenette
 - Bedroom
 - Disabled bathroom

Ground Floor. Disabled unit. 2

Scale 1;100



Family Units

Unit 3-2

Area: 78m²

- open plan lounge and kitchen
- balcony
- bathroom
- double bedroom
- single bedroom
- workspace

Unit 3-3

Area: 78m²

- open plan lounge and kitchen
- 2 x bathroom
- 1 x double bedroom
- 2 x single bedroom

First Floor: Family unit 1 and 2

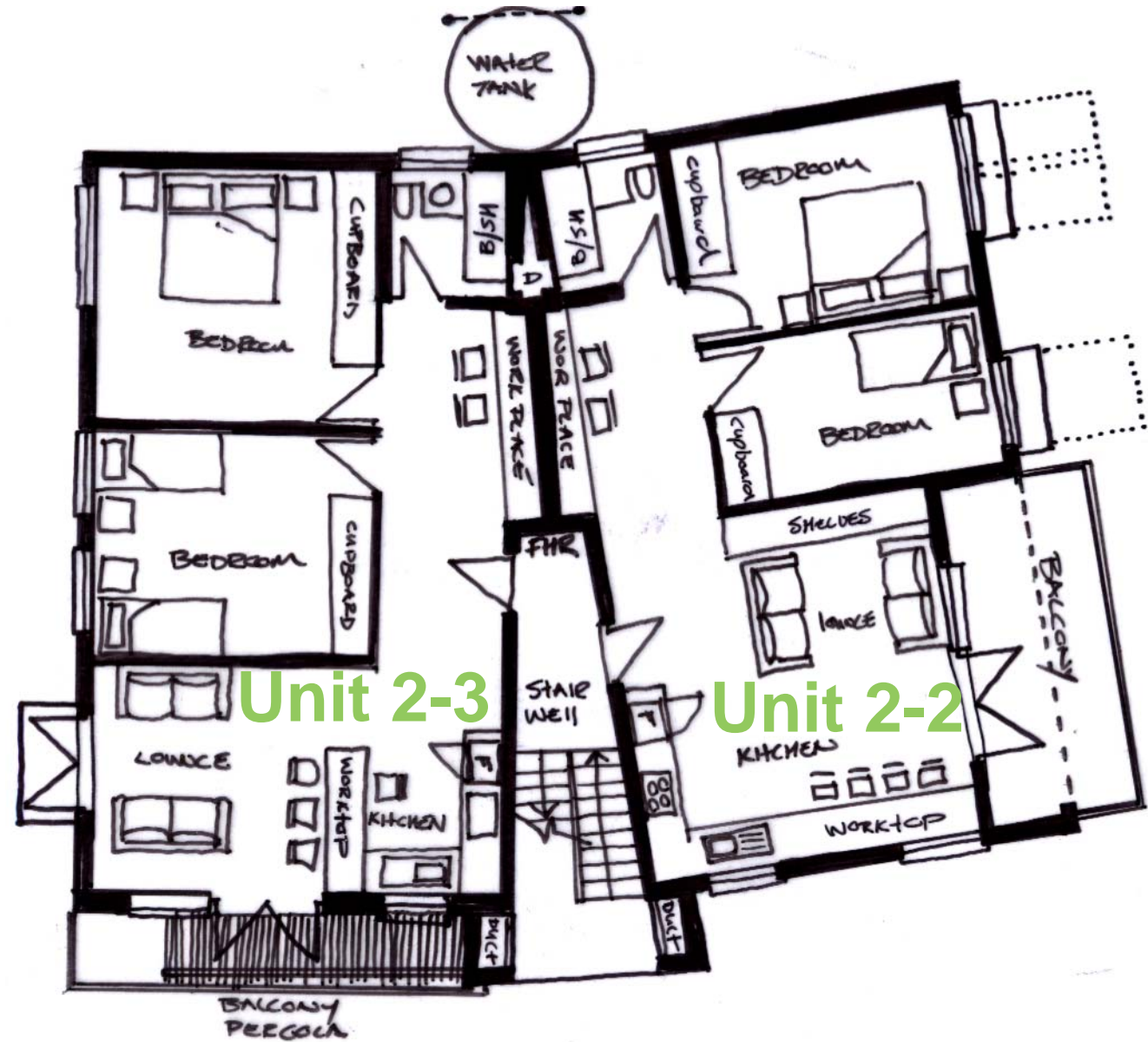
Scale 1;100

Family Units**Unit 2-2**Area: 78m²

- open plan lounge and kitchen
- balcony
- bathroom
- double bedroom
- single bedroom
- workspace

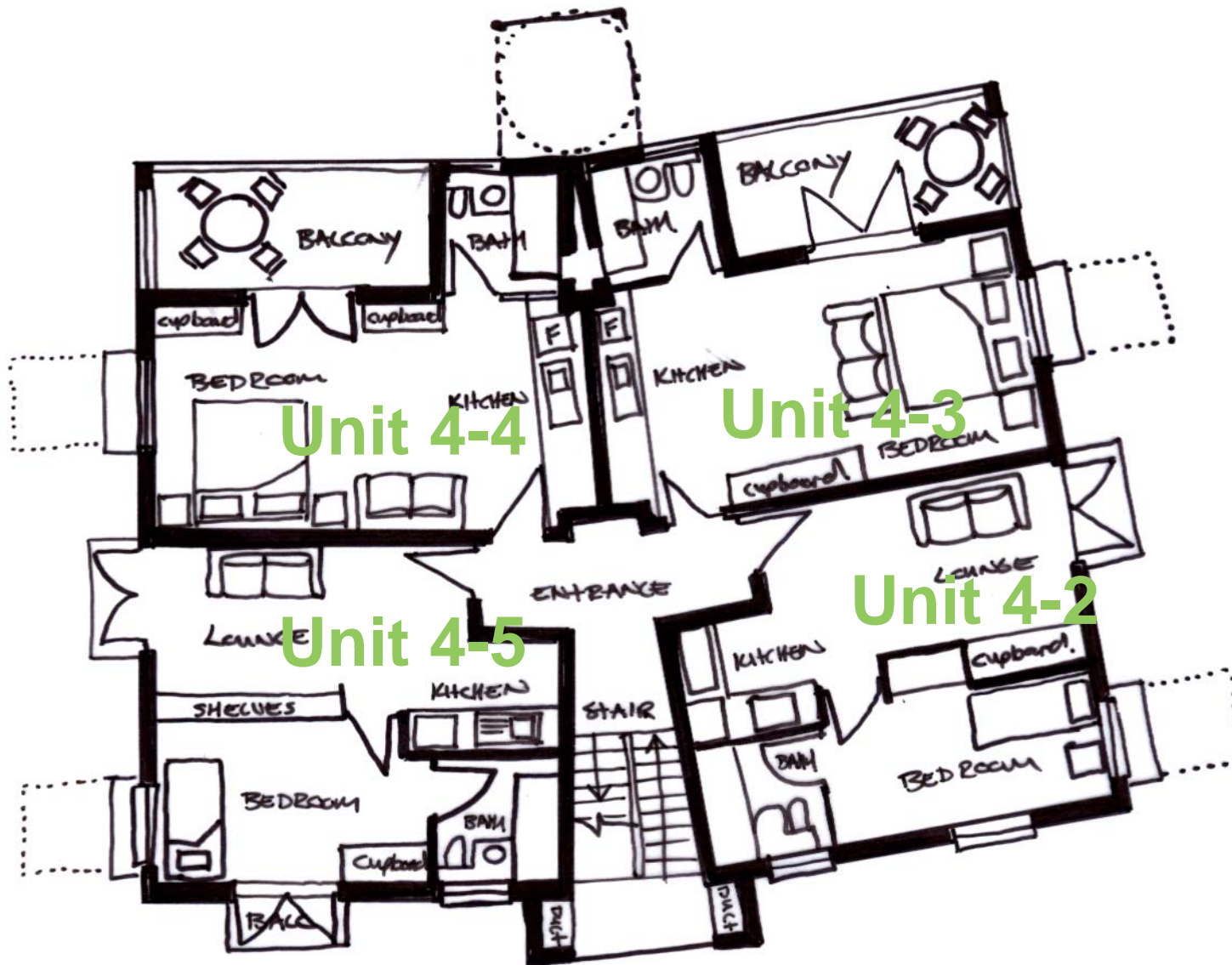
Unit 2-3Area: 78m²

- open plan lounge and kitchen
- bathroom
- 1 x double bedroom
- 1 x double single bedroom
- balcony



First Floor : Family unit 3 and 4

Scale 1;100



Bachelor Units

Unit 4-2

Area: 38m²

- open plan lounge and kitchen
- bathroom
- single bedroom

Unit 4-3

Area: 38m²

- open plan:
 - kitchenette
 - lounge
 - bedroom
- balcony
- bathroom

Unit 4-4

Area: 38m²

- open plan:
 - kitchenette
 - lounge
 - bedroom
- balcony
- bathroom

Unit 4-5

Area: 38m²

- open plan lounge and kitchen
- bathroom
- single bedroom

Second floor. Bachelor Units

Scale 1;100

Bachelor Units**Unit 4-6**Area: 38m²

- open plan lounge and kitchen
- bathroom
- single bedroom

Unit 4-7 + LoftArea: 38m²

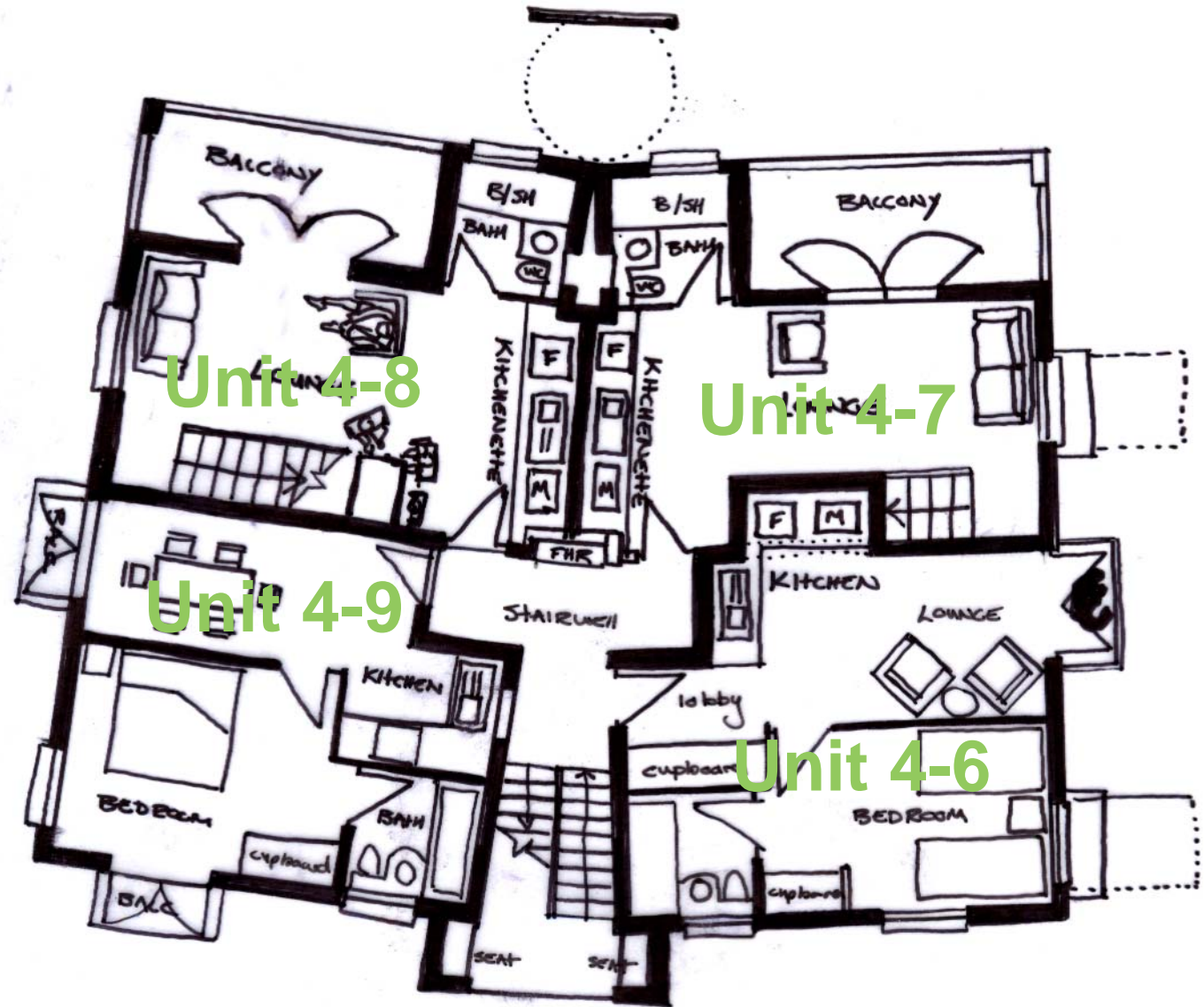
- open plan:
lounge
bedroom
- balcony
- bathroom

Unit 4-8 + LoftArea: 38m²

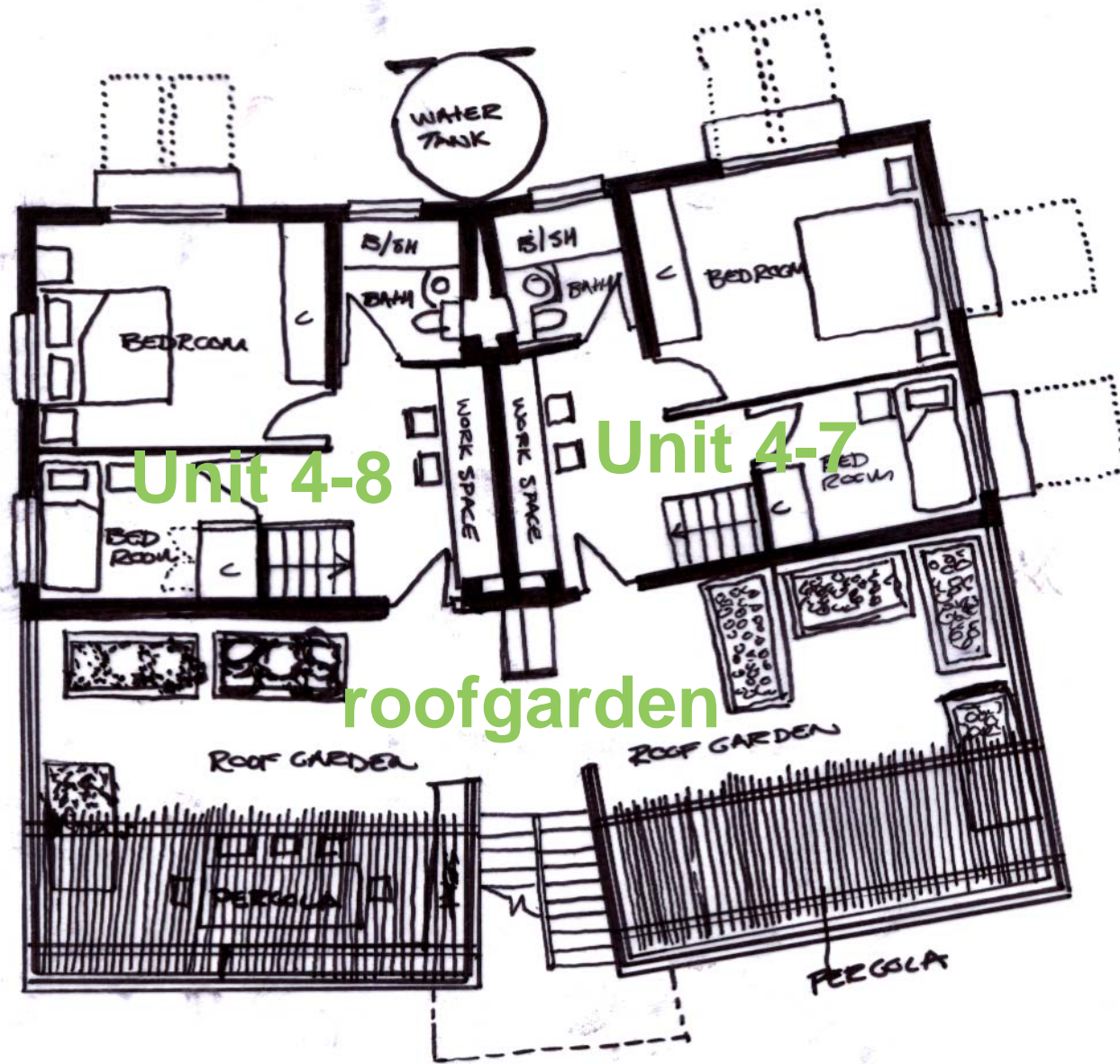
- open plan:
lounge
bedroom
- balcony
- bathroom

Unit 4-9Area: 38m²

- open plan lounge and kitchen
- bathroom
- single bedroom



Second Floor : Bachelor units and Loft units first floor



Loft Units

Unit 4-7 Loft

- Area: 38m²
- double bedroom
- single bedroom
- bathroom

Unit 4-8 Loft

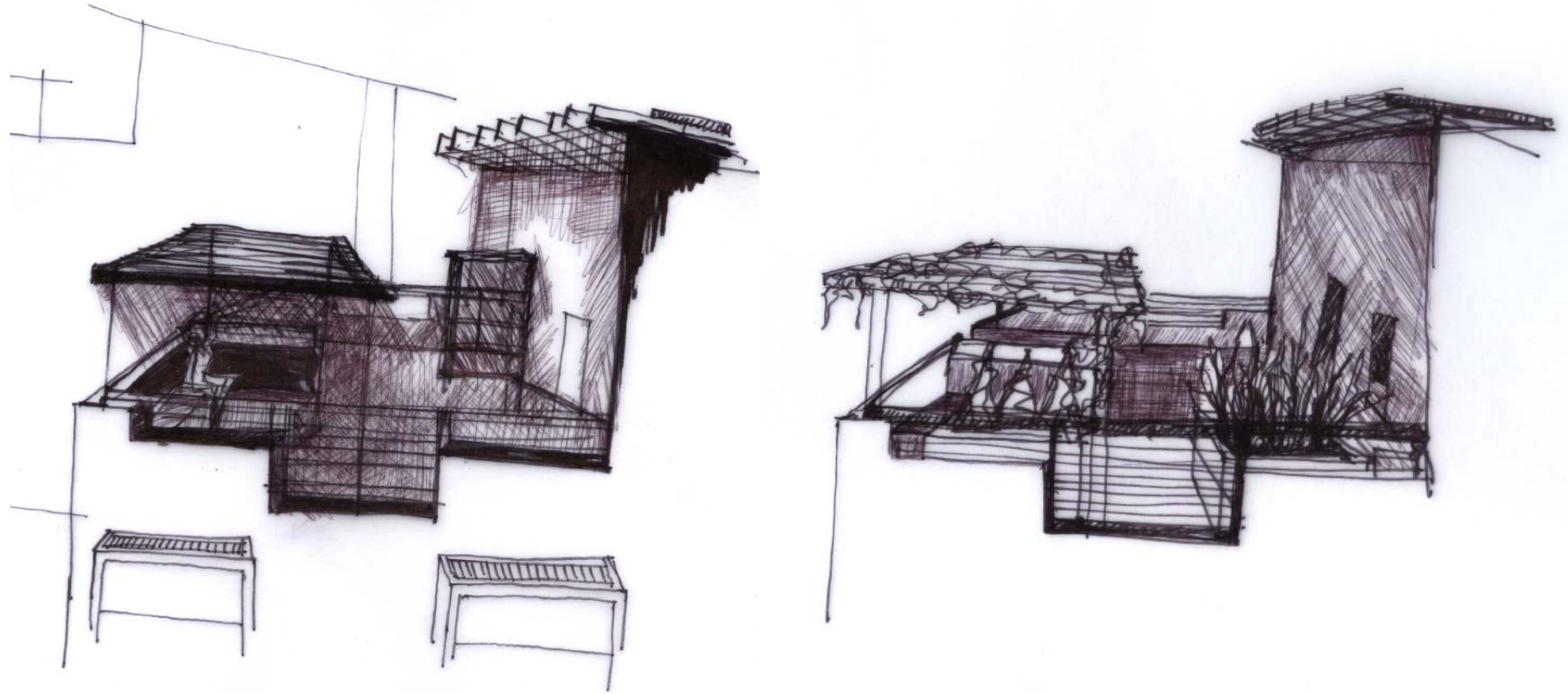
- Area: 38m²
- double bedroom
- single bedroom
- bathroom

Roofgarden

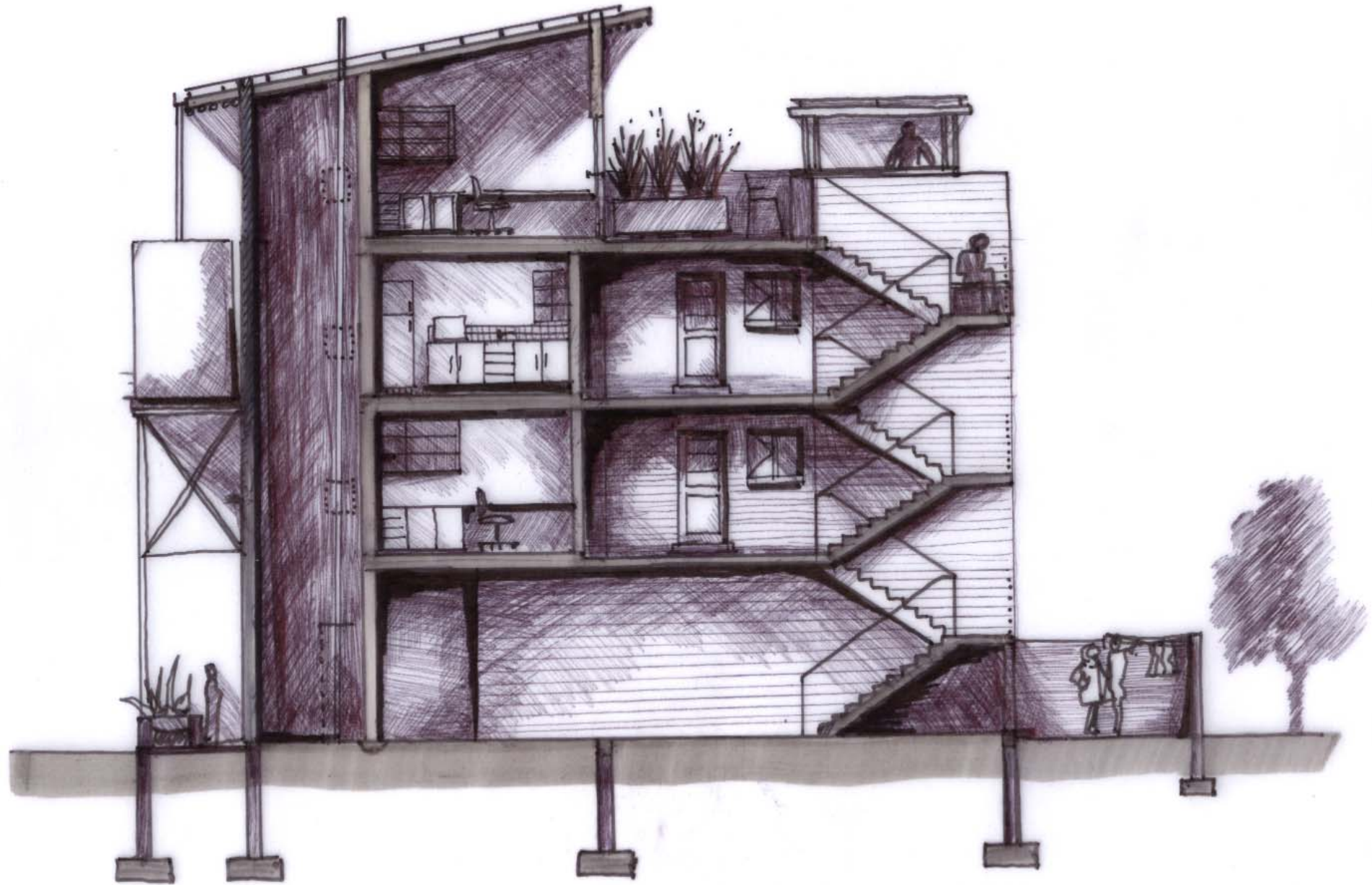
Area: 70m²

Loft and roof garden

Scale 1:100



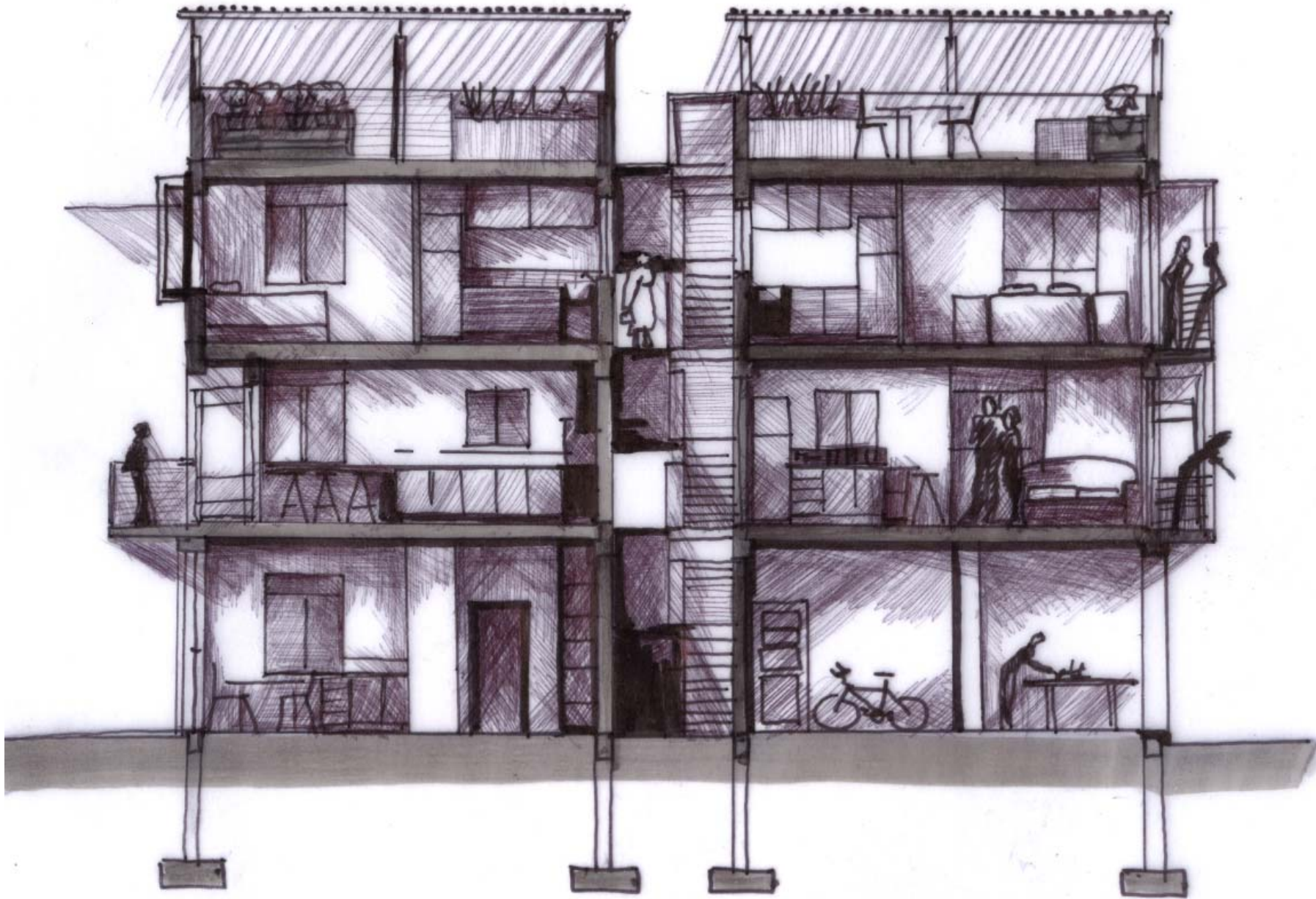
Design Sketch - Pergola on Balcony



Design Section - Stairwell and duct

Not to scale

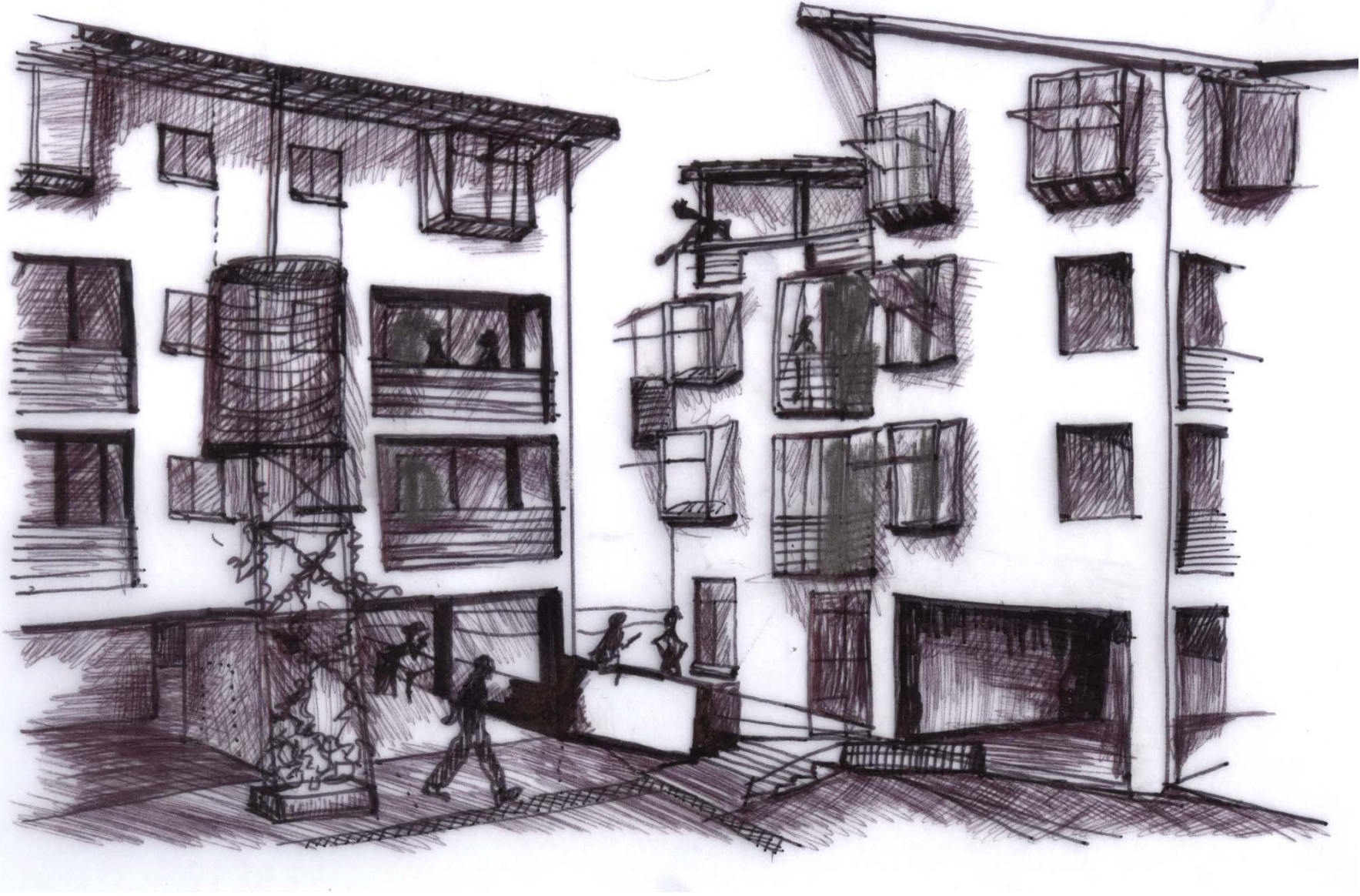
HOUSING: A GREEN PROPRIETOR IN MARABASTAD
JOZANNE SPIES MARCH(Prof) UNIVERSITY OF PRETORIA



Design Section- Internal spaces
Not to scale

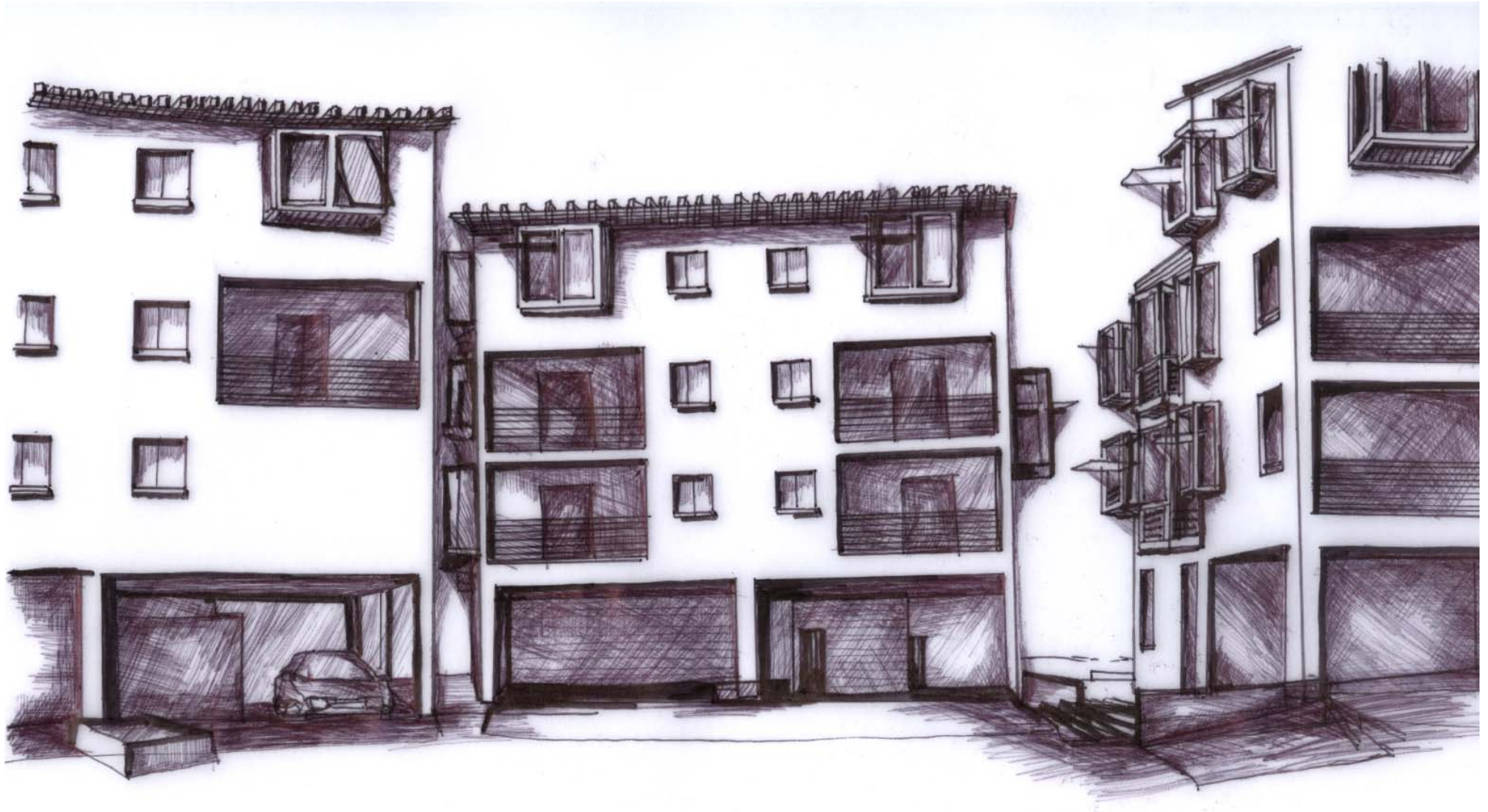


DESIGN PRINCIPLES AND IMPLEMENTATION



Perspective Drawing

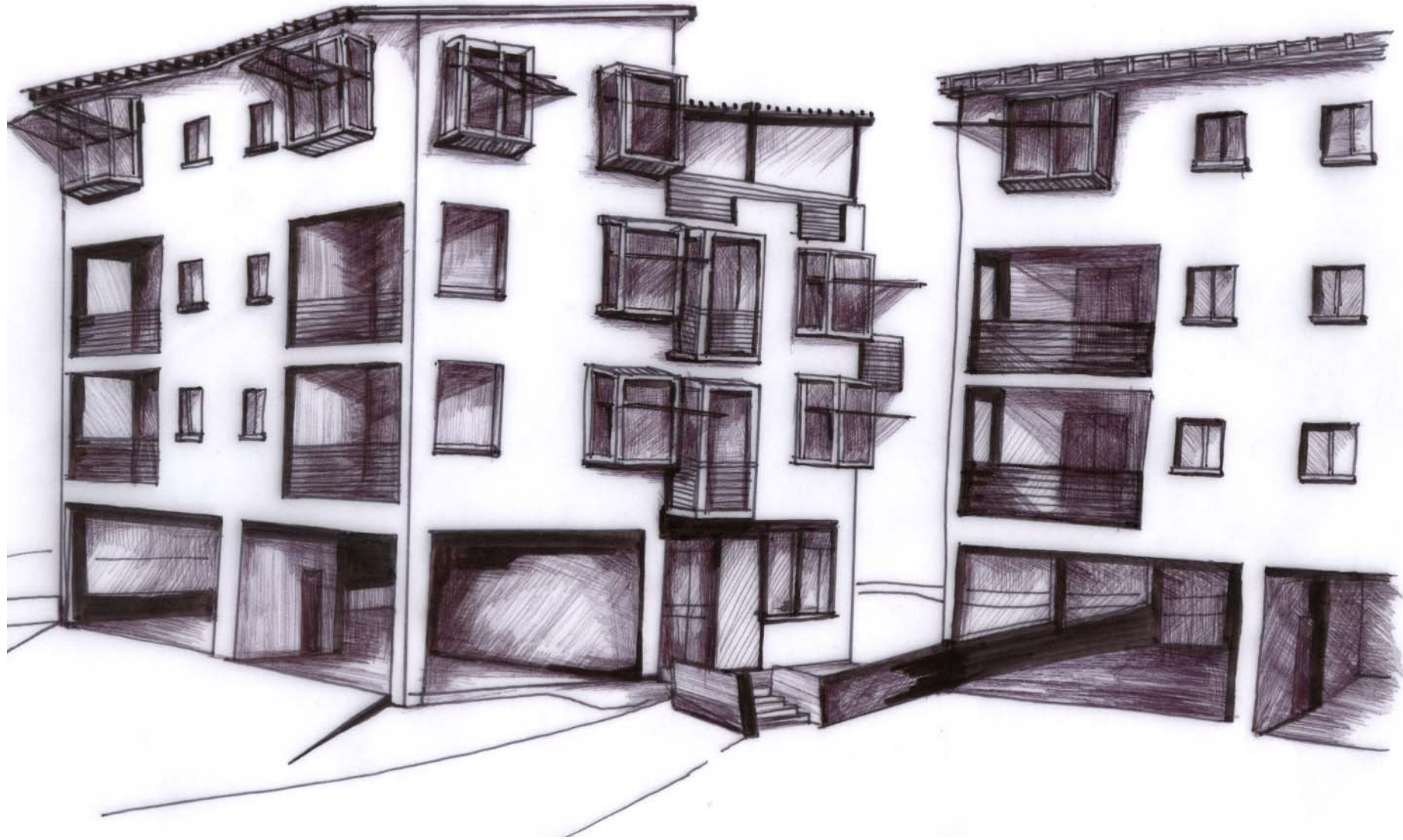
HOUSING: A GREEN PROPRIETOR IN MARABASTAD
JOZANNE SPIES MARCH(PROF) UNIVERSITY OF PRETORIA



6

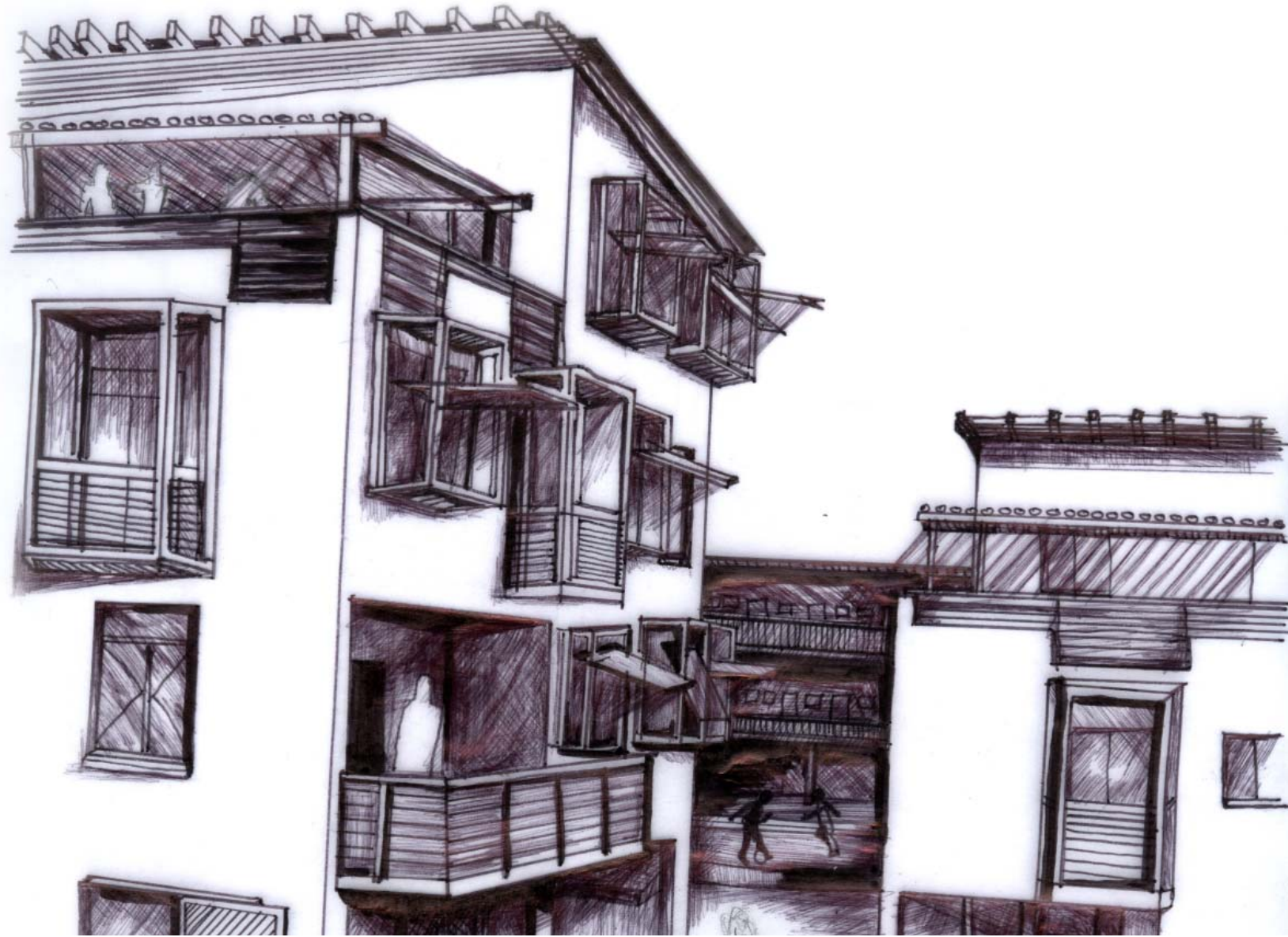
Perspective Drawing

DESIGN PRINCIPLES AND IMPLEMENTATION



Perspective Drawing

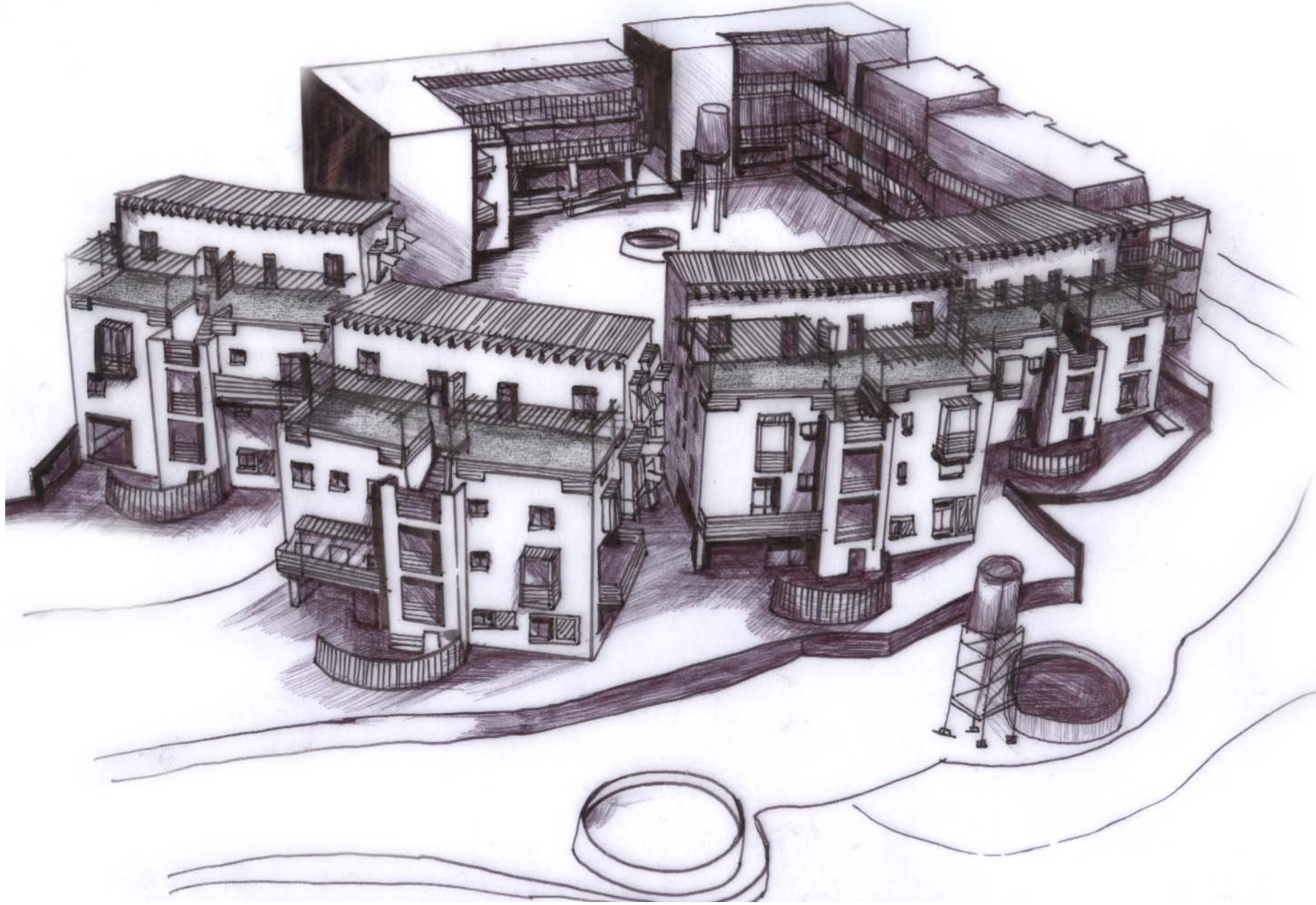
HOUSING: A GREEN PROPRIETOR IN MARABASTAD
JOZANNE SPIES MARCH(PROF) UNIVERSITY OF PRETORIA



Perspective Drawing

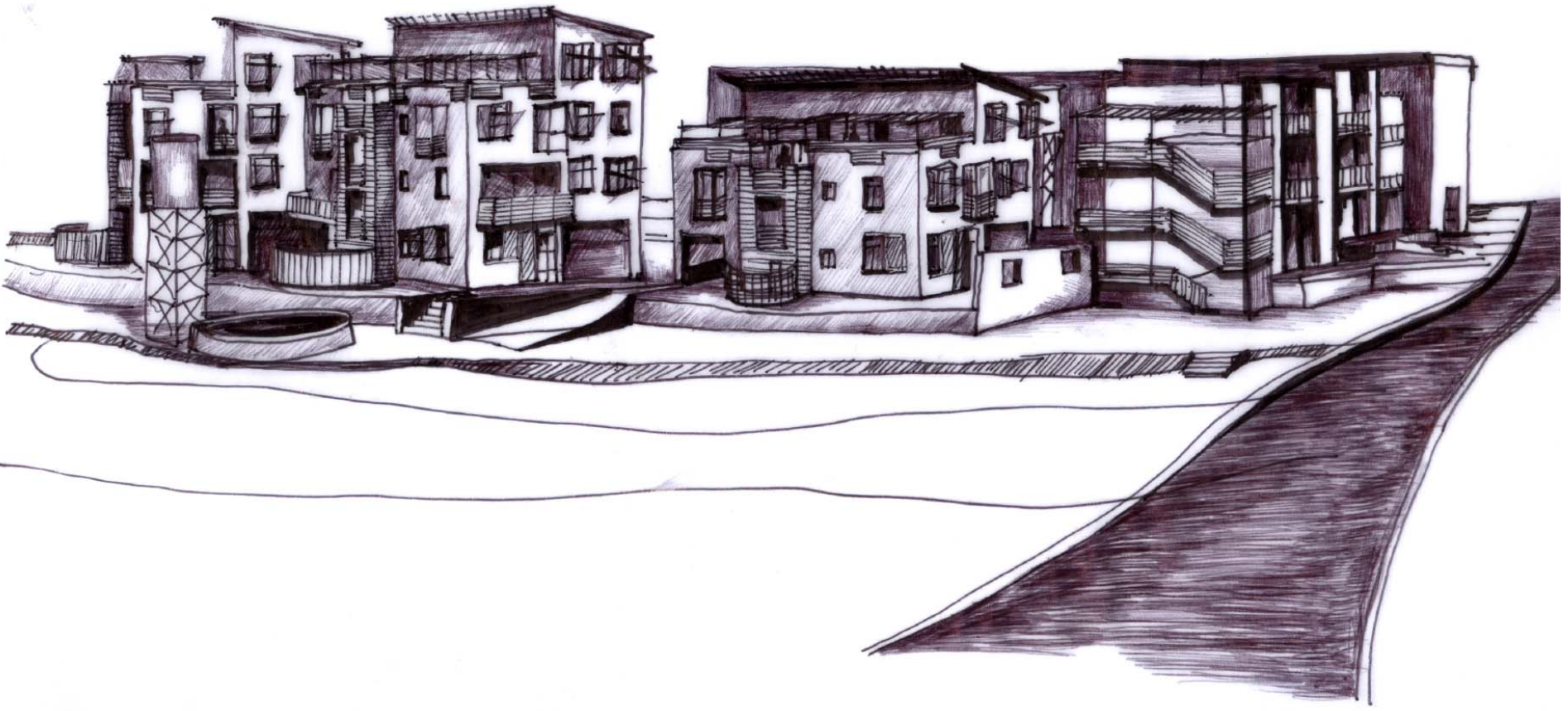


DESIGN PRINCIPLES AND IMPLEMENTATION



Perspective Drawing

HOUSING: A GREEN PROPRIETOR IN MARABASTAD
JOZANNE SPIES MARCH (PROF) UNIVERSITY OF PRETORIA



Perspective Drawing

DESIGN PRINCIPLES AND IMPLEMENTATION



Perspective Drawing