

Electronic supplementary material: Figure S3

Article title:

High-density genetic linkage maps with over 2000 sequence-anchored DArT markers for genetic dissection in *Eucalyptus grandis* x *E. urophylla* hybrids

Journal name:

Tree Genetics & Genomes

Author names:

Anand Raj Kumar Kullán, Maria M van Dyk, Minique H De Castro, Nicky Jones, Arnulf Kanzler, Arlene Bayley, Alexander A. Myburg*

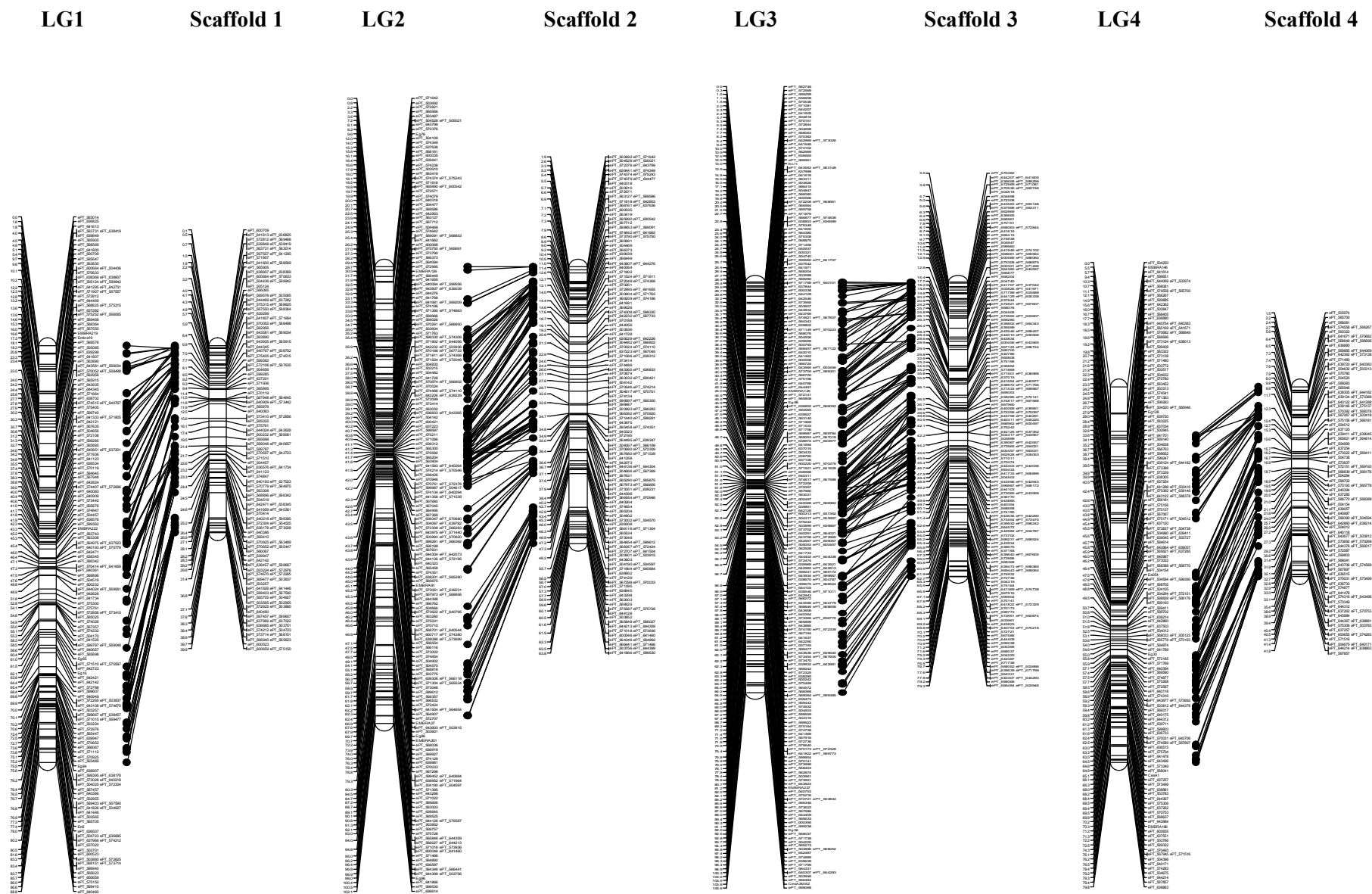
Affiliation and e-mail address of corresponding author:

Department of Genetics, Forestry and Agricultural Biotechnology Institute (FABI), University of Pretoria, Pretoria, 0002, South Africa

zander.myburg@fabi.up.ac.za

Supplemental Figure S3. Alignment of the *Eucalyptus grandis* x *E. urophylla* consensus linkage maps with the draft (JGI-DOE V1.0) assembly of *E. grandis* genome.

Left: Consensus genetic map in cM derived from *E. grandis*, *E. urophylla* and their F1 hybrid. Right: Scaffolds from the draft genome assembly (V1.0) of *E. grandis* corresponding to the linkage group. The linkage map alignment was visualized graphically with MapChart.



LG5

Scaffold 5

LG6

Scaffold 6

LG7

Scaffold 7

LG8

Scaffold 8

