

**Electronic supplementary material: Figure S1**

**Article title:**

High-density genetic linkage maps with over 2400 sequence-anchored DArT markers for genetic dissection in an F2 pseudo-backcross of *Eucalyptus grandis* x *E. urophylla*

**Journal name:**

Tree Genetics & Genomes

**Author names:**

Anand Raj Kumar Kullán, Maria M van Dyk, Nicky Jones, ArnulfKanzler, Arlene Bayley, Alexander A. Myburg\*

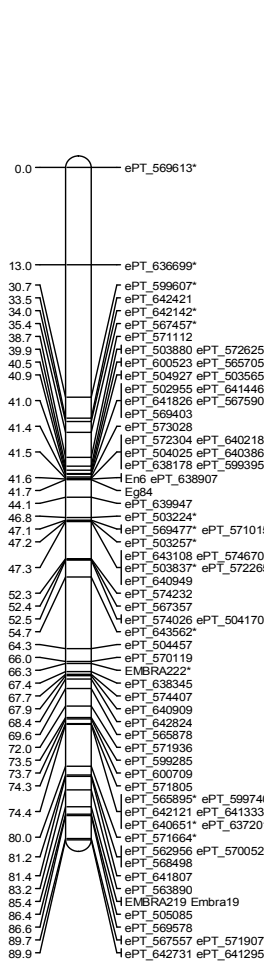
**Affiliation and e-mail address of corresponding author:**

Department of Genetics, Forestry and Agricultural Biotechnology Institute (FABI), University of Pretoria, Pretoria, 0002, South Africa

[zander.myburg@fabi.up.ac.za](mailto:zander.myburg@fabi.up.ac.za)

**Supplemental Figure S1.** High-density parental genetic linkage maps of *E. grandis*, *E. urophylla* and their F1 hybrid. Linkage group numbers are followed by parental codes for the *E. grandis* backcross parent (gr), the F1 hybrid in the *E. grandis* backcross (grh), the F1 hybrid in the *E. urophylla* backcross (urh), and the *E. urophylla* backcross parent (ur). Map positions in cM (Kosambi) are shown on the left and marker names on the right of each linkage map. DArT marker names start with the prefix ePT (for *Eucalyptus* and complexity reduction method PstI/TaqI) followed by the DArT clone ID. Solid lines connecting black dots indicate the positions of DArT and microsatellite markers that are common between the F1 hybrid and backcross parent maps. Loci showing segregation distortion ( $P < 0.05$ ) are indicated with stars after the marker names.

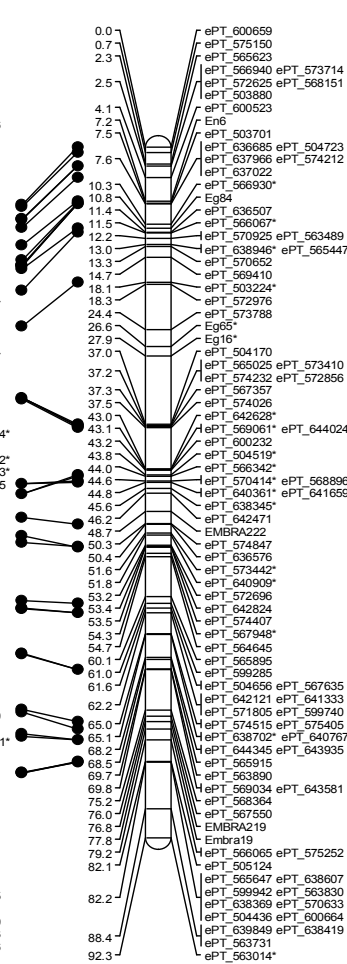
LGgr1



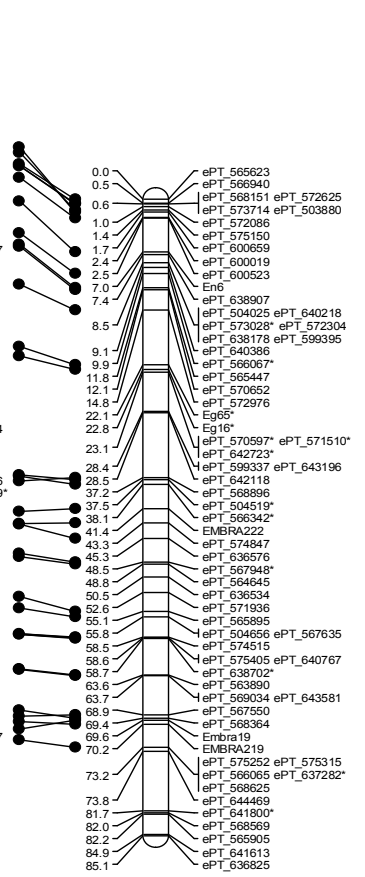
LGgrh1



LGurh1



LGur1

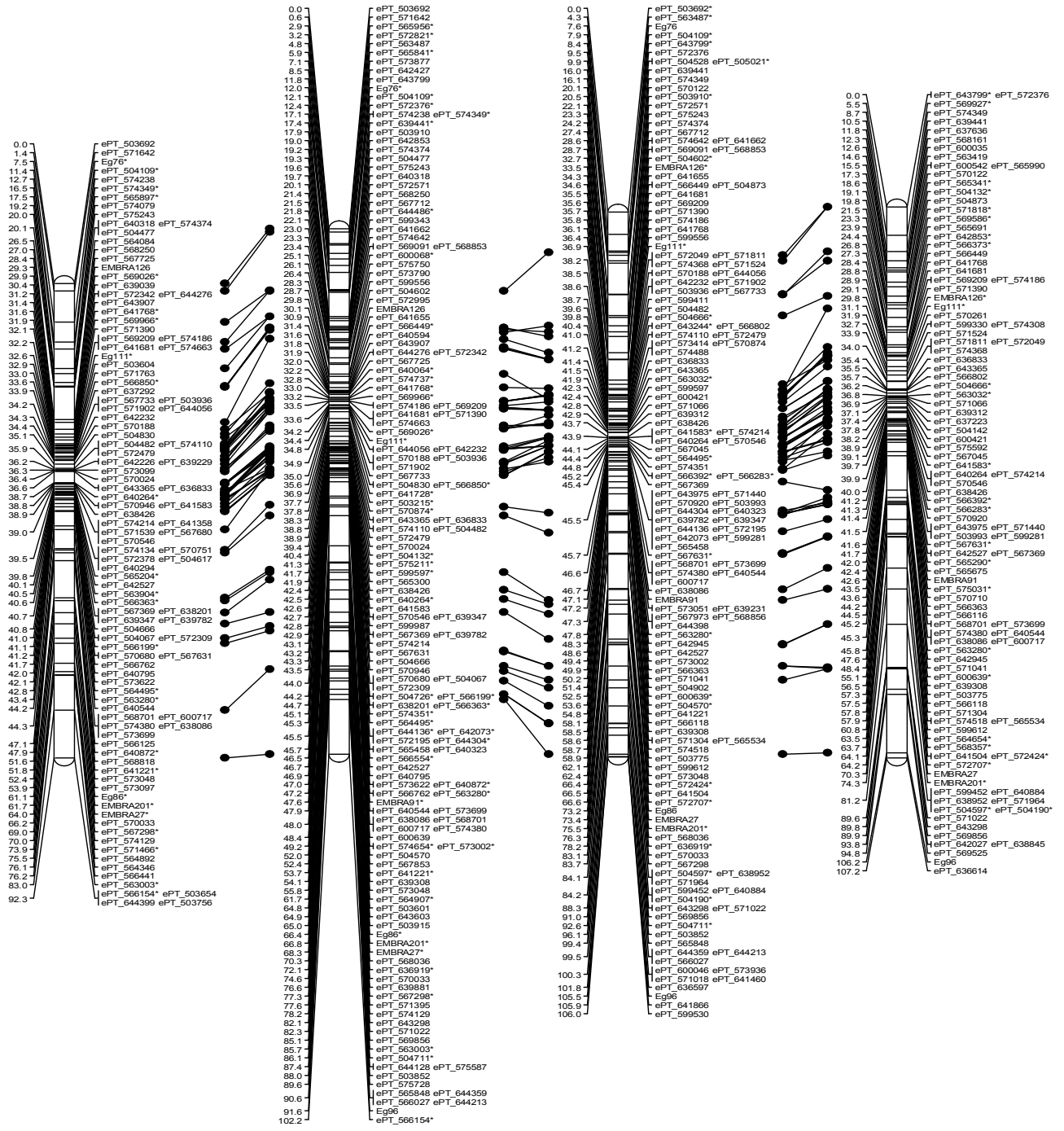


LGgr2

LGgrh2

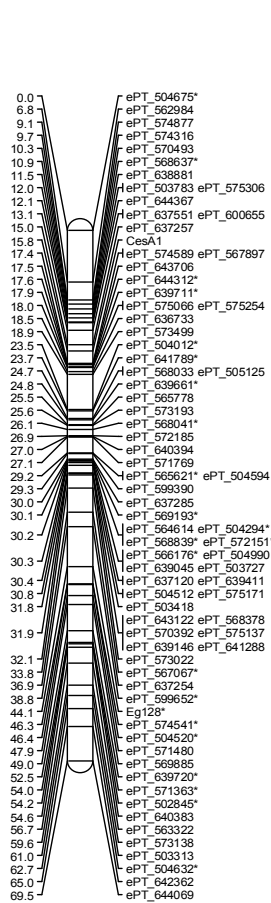
LGurh2

LGur2

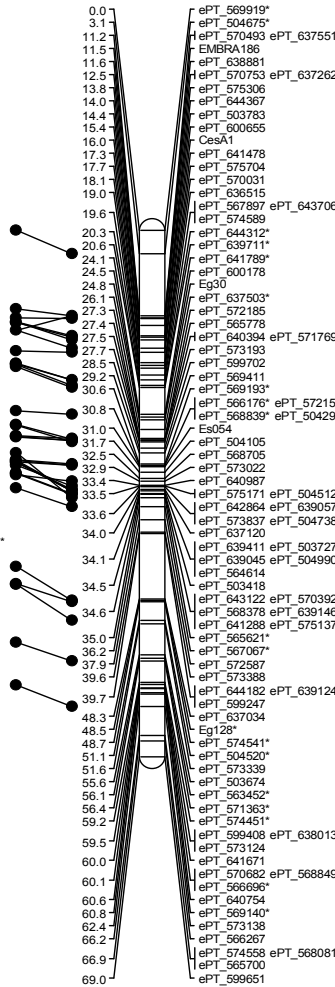




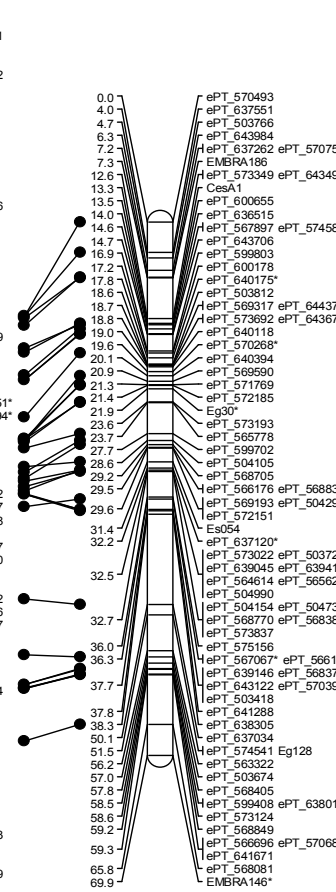
LGgr4



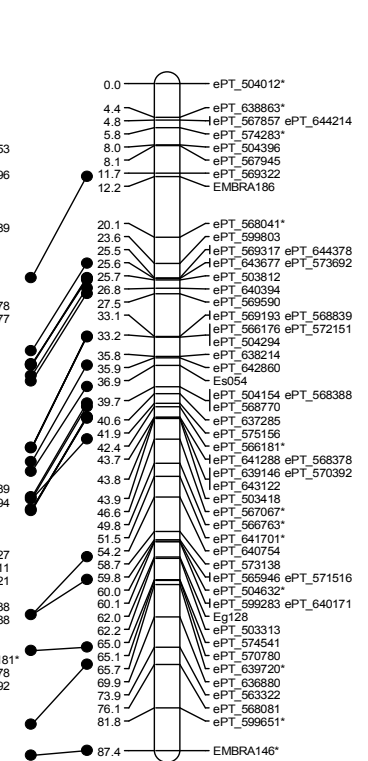
LGgrh4



LGurh4



LGur4

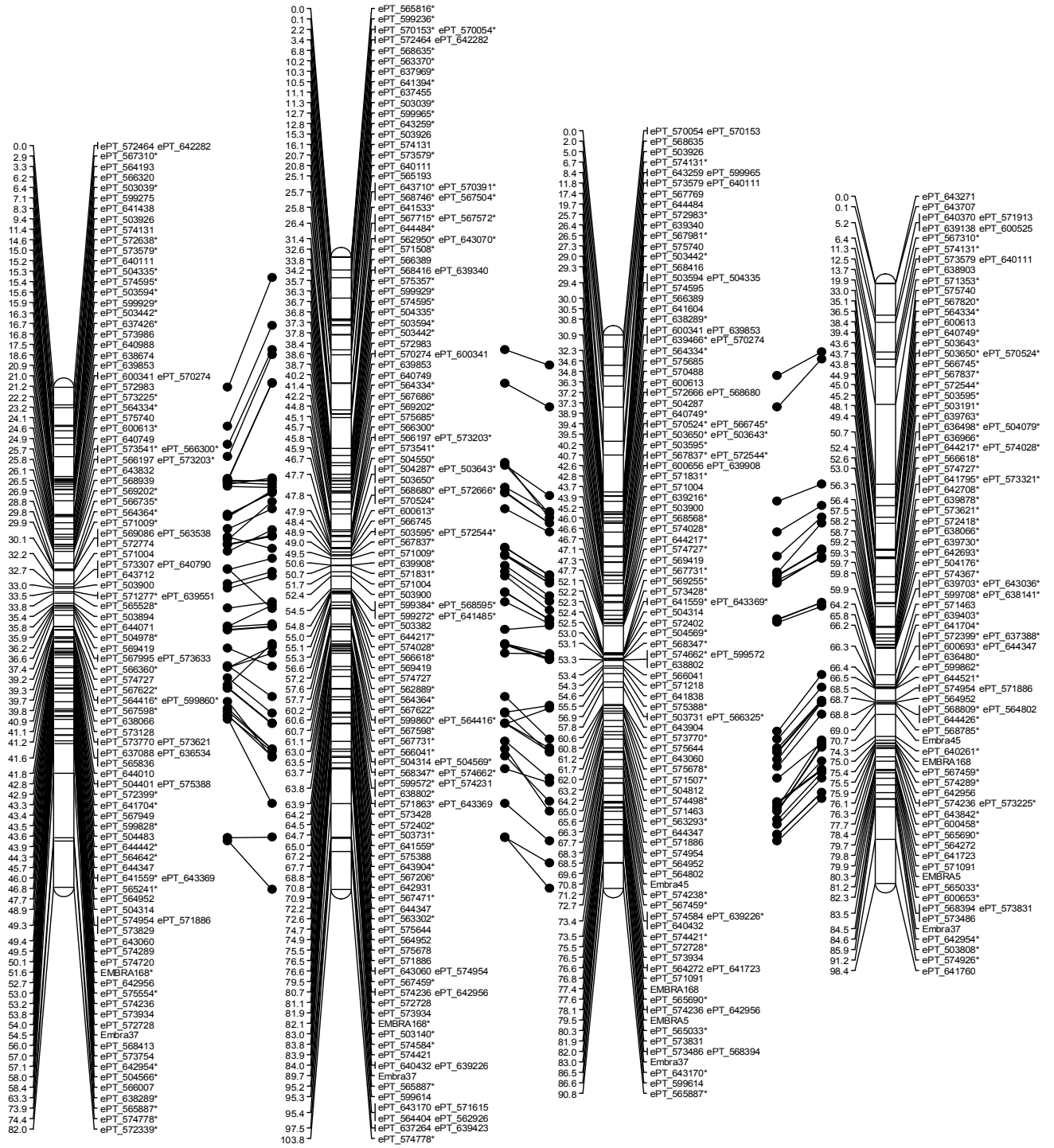


LGgr5

LGgrh5

LGurh5

LGur5





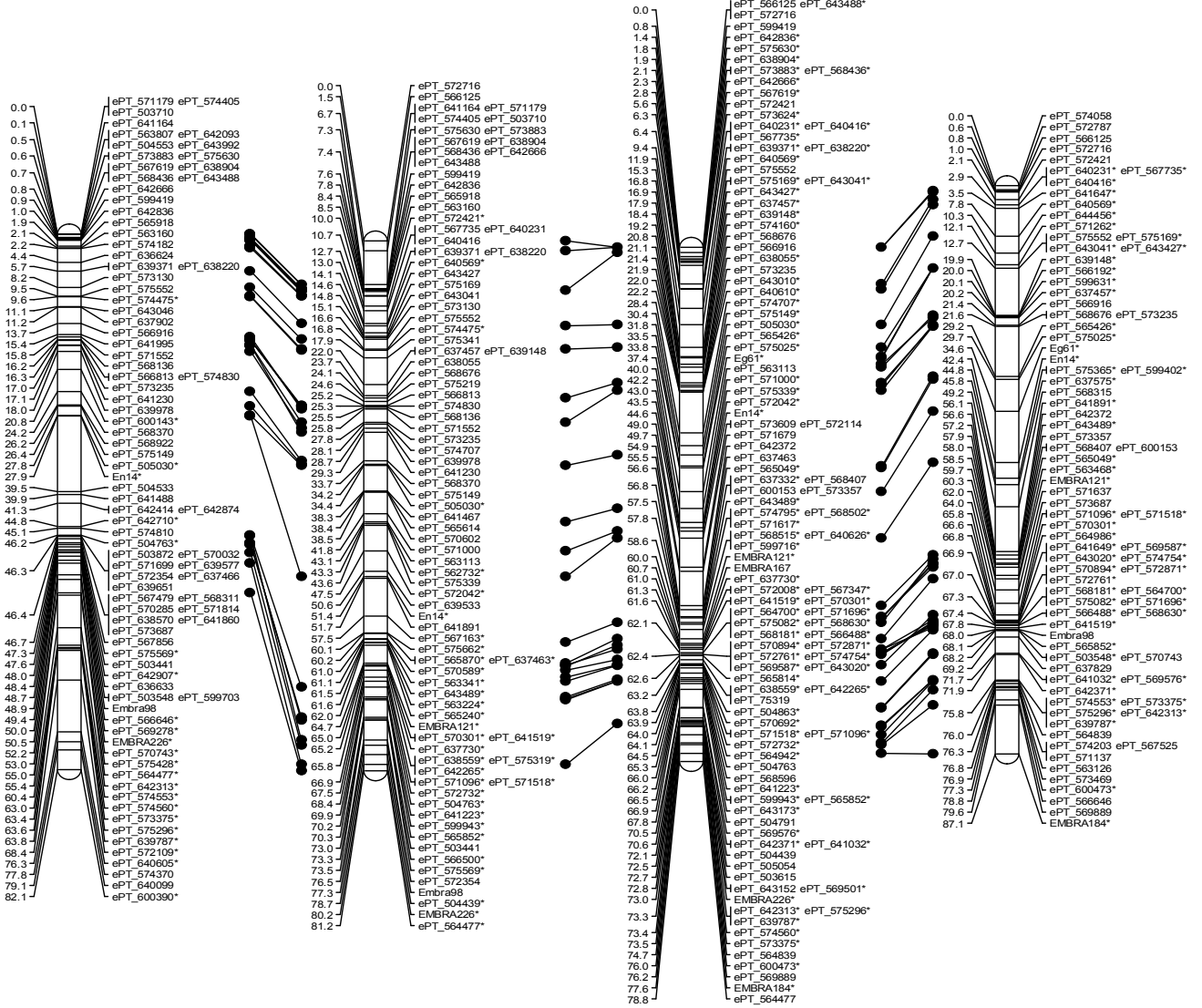


LGgr7

LGgrh7

LGurh7

LGur7

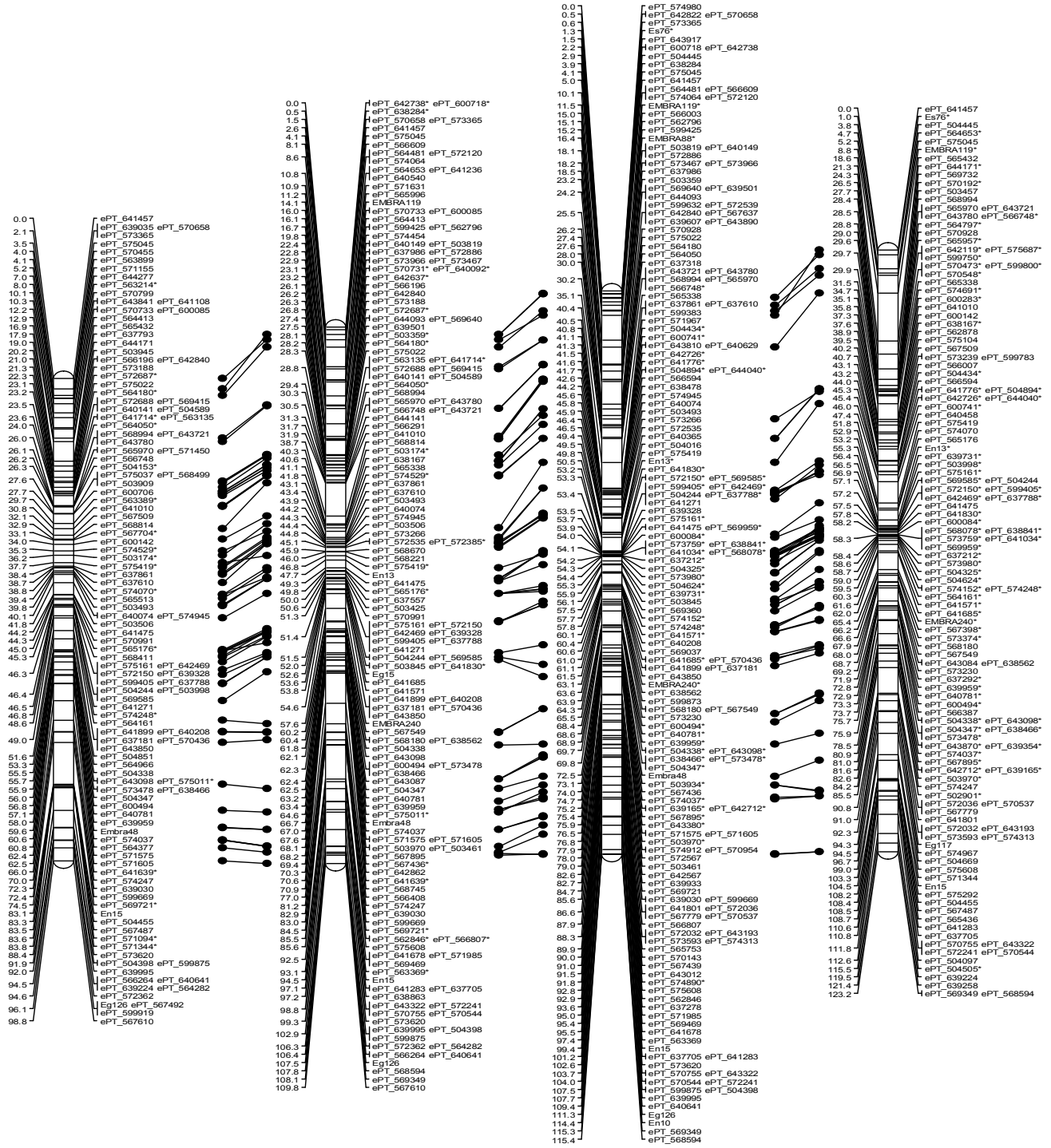


LGgr8

LGgrh8

LGurh8

LGur8

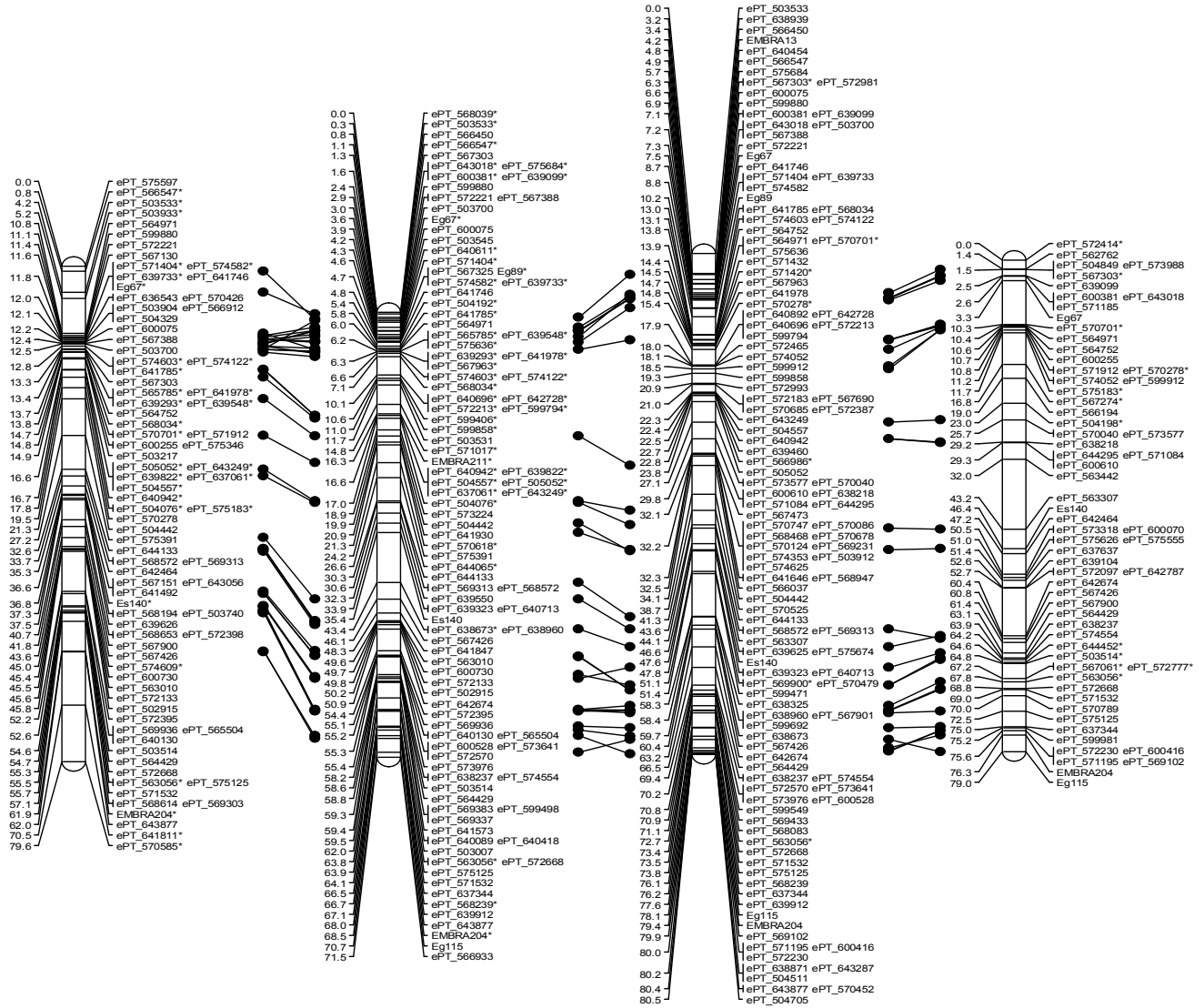


LGgr9

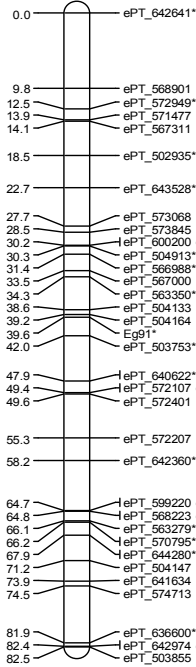
LGgrh9

LGurh9

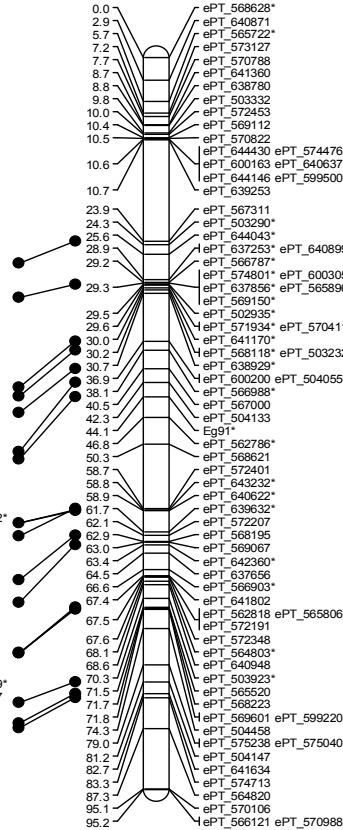
LGur9



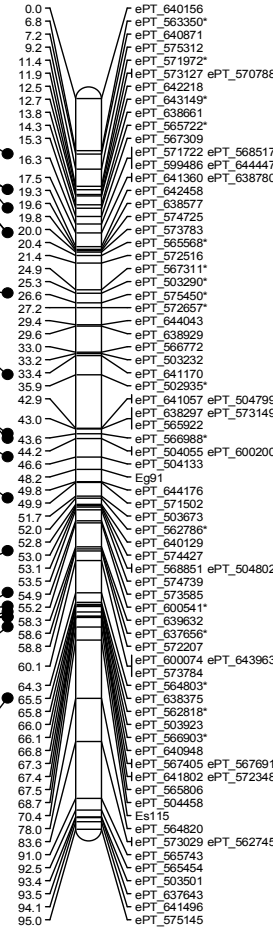
LGgr10



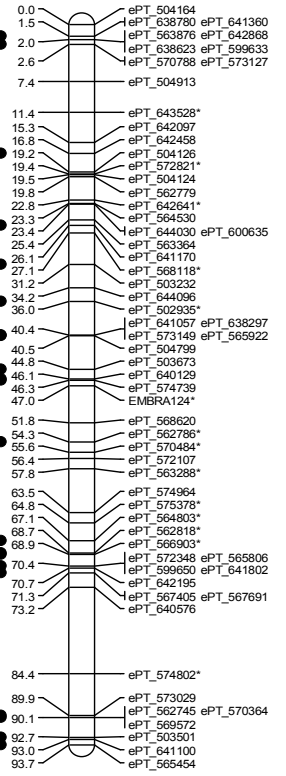
LGgrh10



LGurh10



LGur10



LGgr11

LGgrh11

LGurh11

LGur11

