

# W. & G. SCOTT, Timber Merchants

— AND —

## SAW MILLERS,

— IMPORTERS OF —

### Baltic and American Timber

---

OF EVERY DESCRIPTION.

*LARGE STOCKS OF*

Flooring and Ceiling Boards,

American Timber, Teak Mahogany,

Walnut, Oak, Ash, Kaurie,

&c., &c., &c.

### MOULDING A SPECIALITY.

**Doors, Windows, Facia and Barge**

**Boarding Joinery and Finishing**

**of every description made**

**to order.**

SAW MILLS:

# DOCK ROAD,

. . CAPE TOWN. . .



Photo—Bruton:

**THE PREMISES OF WOODHEAD, PLANT & Co.,  
GENERAL MERCHANTS AND HOUSE FURNISHERS, &C., STRAND ST.**



THE PREMISES OF J. LAWLEY & CO., OUTFITTERS, &C., "WEST OF ENGLAND,"  
LONGMARKET STREET AND CHURCH SQUARE.



Wm. Rawbone

**ARMS & AMMUNITION**

DEALER,

Burg Street, Cape Town

W.M. invites Inspection of his Large and Varied Stock of

**Guns, Rifles & Revolvers,  
Cartridges and  
Sportsmen's Requisites**

OF EVERY DESCRIPTION.

**DYNAMITE, DETONATORS,  
FUSE, BLASTING POWDER,  
AND GUNPOWDER** ALWAYS ON HAND.

*SHOT CARTRIDGES a Speciality, in  
Black or Smokeless Powders, by best  
Makers only.*

Clay Pigeons and Inanimate Bird  
Traps at Low Rates.

**WHOLESALE and RETAIL.**

THE  
**Van Ryn Wine and Spirit Co.**  
 (LIMITED),  
 - - CAPE TOWN. - -

Oldest Established Wholesale and Retail Business

- IN -

CAPE WINES & BRANDIES,

FINEST SELECTION OF

Well-matured Wines and Cognacs.

Orders attended to for all parts of South  
 Africa and for Shipment to Europe.

Visitors to Cape Town can obtain permission to inspect  
 the Van Ryn Wine and Spirit Company's Stores by  
 applying at the Company's Head Office,

**ST. ANDREW'S SQUARE,  
 TOP OF WATERKANT STREET.**

Numerous Branch Establishments in  
 Cape Town and Suburbs.



THE PREMISES OF THE VAN RYN WINE & SPIRIT CO., LTD.,  
WATERKANT STREET.



Photo—Gordon & Smith. THE PREMISES OF R. D. IRWIN, GROCER AND PROVISION  
MERCHANT, CORNER OF WATERKANT AND BREE STREETS.

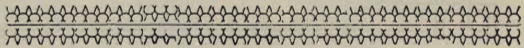


# R. D. IRWIN

. . Wholesale . .

AND

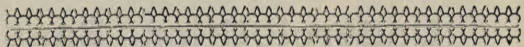
. Retail Grocer .

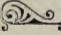


**TEA, COFFEE**

AND

**PROVISION MERCHANT.**



ALL ORDERS  . . . . .

Entrusted to us will receive Careful  
and Prompt Attention.

**BREE and WATERKANT STREETS.**



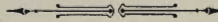
**“The West of England,”**

THE LEADING HOUSE  
FOR GOOD VALUE.

**Cape Town.**



For the Excellence in Quality of all Garments supplied for  
Gentlemen's, Youths' and Boys' wear.



**Direct Importers** from the best Manufacturers

**Of Hats, Shirts, Collars, Ties,  
Underclothing, Bags, Boots, etc.**

**J. LAWLEY & CO.**

*OUTFITTERS*

*Longmarket Street & Church Square.*



M. & C. 200

Photo—Brinton.

AN ARAB SCHOOL IN CAPE TOWN.



GROUP OF MALAY PILGRIMS.

**GORDON MITCHELL & CO.,**  
**Wholesale Fine Goods Merchants,**

IMPORTERS & CLOTHING CONTRACTORS

TO THE

Colonial and Transvaal Governments,

**32, ST. GEORGE'S ST., CAPE TOWN,**

AND

**JOHANNESBURG, S.A.R., &c.**

LONDON ADDRESS; 1A ALDERMANBURY AVENUE, E.C.

*Departments.*

DRESS GOODS.  
 TRIMMINGS.  
 STRAWS AND FLOWERS.  
 FEATHERS, RIBBONS.  
 GLOVES, LACES.  
 UMBRELLAS, SUNSHADES.  
 HABERDASHERY.  
 SMALL WARES.  
 HOSEIERY, UNDERCLOTHING.

LADIES' JERSEYS, JACKETS,  
 CORSETS. [ &c.  
 MANCHESTER GOODS.  
 READY-MADE CLOTHING.  
 GENTS' & YOUTHS' OUTFIT-  
 TING. [ TING.  
 BOOTS & SHOES.  
 WOOLLENS.  
 TAILORS' TRIMMINGS.  
 FANCY GOODS.

~~~~~  
 Samples and Price Lists Forwarded to any Part of  
 South Africa.

# Rudge Whitworth.

**T**HIS is the Oldest and Largest Firm of Cycle Manufacturers in the World with Factories in Birmingham and Coventry. It is next to impossible to accurately describe the vastness of this concern, but to give some idea it is interesting to note that the Factories cover an area of something like six or seven acres of ground, and about 1,200 Machines are turned out per week. In addition to these, thousands of pairs of Ricksha Wheels are made every year.

The quality and construction of the Machines is of the very best, Rudge-Whitworth having been awarded no less than 29 Gold Medals at the various Exhibitions.

Among the Patrons of Rudge-Whitworth, Ltd., are H.R.H. The Princess of Wales, H.R.H. The Duke of York, H.R.H. The Princess Beatrice, H.I.M. The Empress of Austria, H.M. The King of Spain, H.M. The Queen of Greece, and the leading nobility and aristocracy of England.

The extraordinary success which has been gained by Rudge-Whitworth Cycles and the innumerable victories that have been won on them in all parts of the world cannot be estimated.

The following is a small selection :—

- 1 Mile Record, 1 min. 25.3/5 secs.**
- 100 Miles World Record.**
- 100 Kilometers World's Championship.**
- 50 Kilometers French Championship.**
- 10 Kilometers Dutch Championship.**

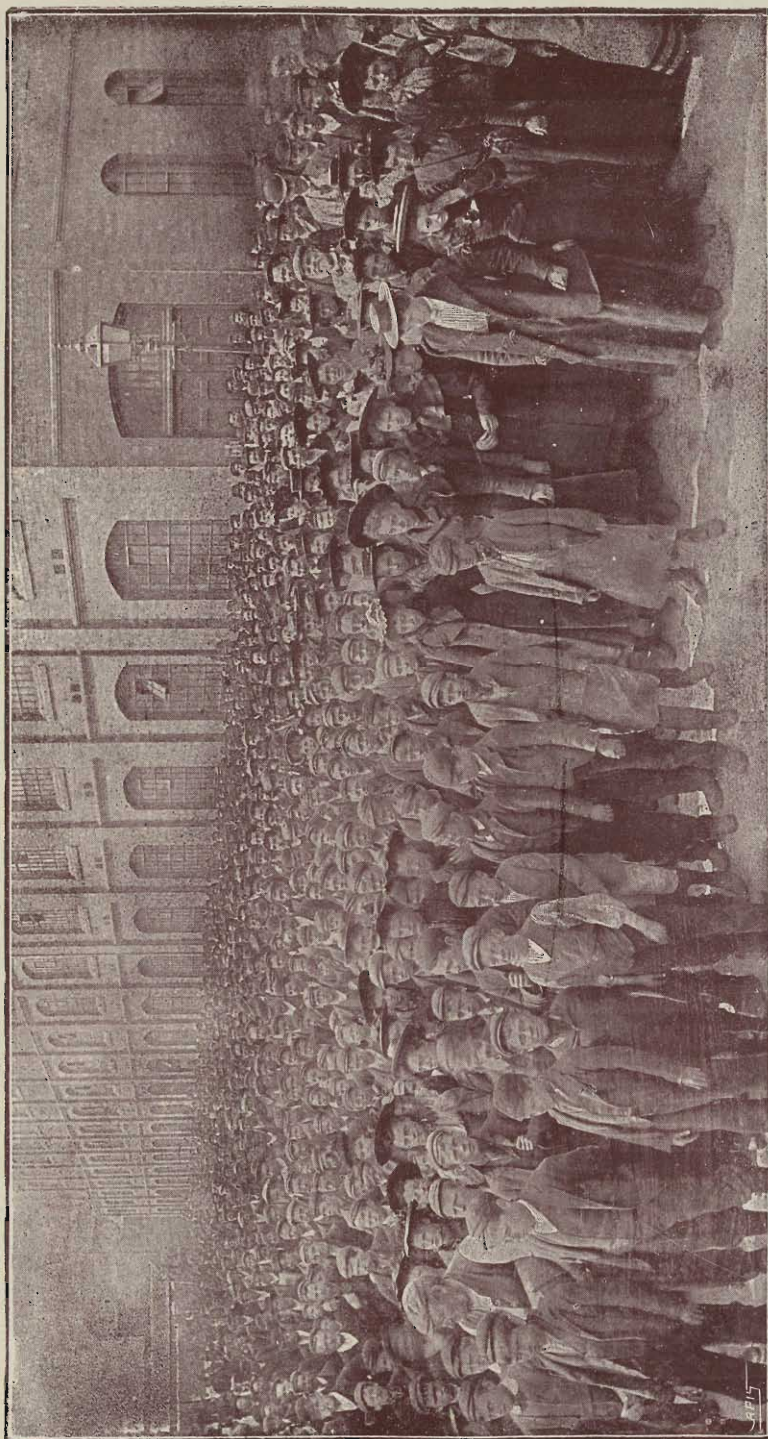
while records annexed by riders of Rudge-Whitworth Cycles are innumerable.

Rudge-Whitworth, Ltd., have also been patronised by the British Government, and the Ambulance Wagons for the Soudan Expedition were manufactured at the Factories of Rudge-Whitworth, Ltd., as well as Machine supplied to the 2nd Life Guards, Royal Horse Guards, Metropolitan Police, Manchester Police, and the Civil Servants of Ireland.

The Company has Depôts in the principal centres of England (having no less than three in London itself), with distributing centres in every country in the world. In South Africa there are three Depôts, viz., 17, Hout Street, Cape Town, 38, Main Street, Port Elizabeth, and Henwood's Buildings, Johannesburg, with complete Workshops where Repairs are executed for every class and make of Cycle. The South African Branches are under the control of Mr. L. S. Meintjes, who is known to every Cyclist in South Africa, and not a few in Europe and America.

The high degree of perfection to which Rudge-Whitworth Cycles have been brought created a demand which, at times, was impossible for the Company to meet, and through the long delay in the execution of their orders several patrons were disappointed. This difficulty has now practically been overcome, and by extensive additions to Machinery and a complete reorganization of the two Factories, orders placed will be promptly executed to the entire satisfaction of all Patrons.

To all wishing to enjoy the pleasures of Cycling, we cannot do better than say, "Ride a Rudge-Whitworth."



THE RUDGE-WHITWORTH EMPLOYEES LEAVING FOR LUNCH.



Photo—Bruton

J. WALKER & Co., "THE LOUVRE," DRAPERS & ART CABINET MAKERS.

INTERIOR OF ONE OF THE FURNITURE SHOW-ROOMS, 25, PLEIN ST.



# Hotel Metropole,

CORNER OF LONG ST. & CASTLE ST.,

## CAPE TOWN.

OPENED 3RD JUNE, 1895.

Offers First-Class Accommodation to Travellers & Others.

**TERMS—10s. PER DAY.**

**SPECIAL ARRANGEMENTS BY WEEK OR MONTH.**

**ELECTRIC LIGHT THROUGHOUT.**

**SPACIOUS RECEPTION ROOM. BEDROOMS LARGE AND AIRY.  
PERFECT SANITATION**

**ONLY THE BEST BRANDS OF WINES & SPIRITS KEPT.**

The Cuisine under the Direction of a First-Class German Chef.

**PORTERS MEET ALL TRAINS AND STEAMERS.**

*Hotel is close to Railway Station, Post Office, &c. Tramways Pass the Hotel.*

**Baths (Hot and Cold) on every Landing.**

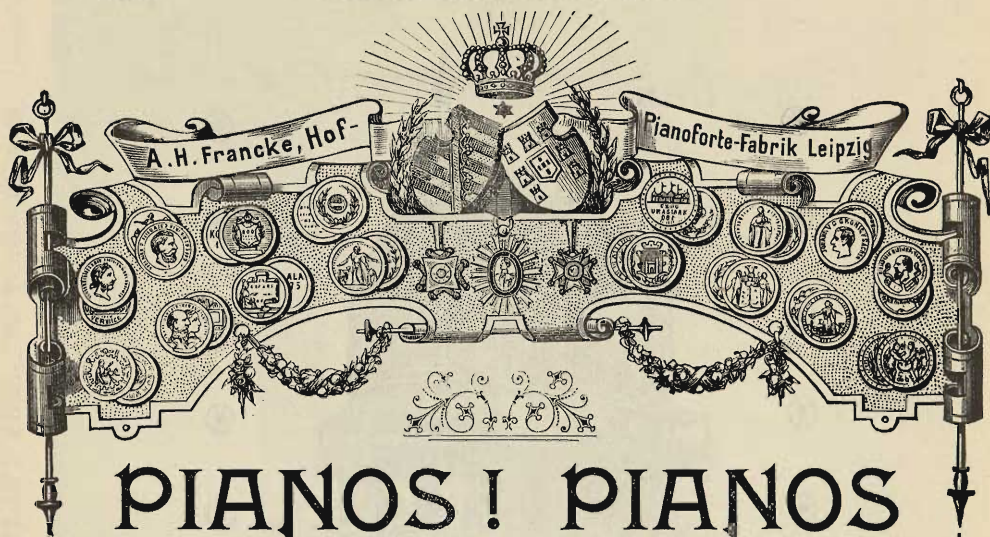
**A. HARTUNG, PROPRIETOR.**

*Late of Smithfield, O.F.S.*

TELEGRAPHIC ADDRESS—"METROPOLE."

P.O. Box 421.





# PIANOS! PIANOS

The Leading Professional and Amateur Musicians strongly recommend the WHOLESALE and RETAIL Music Warehouse of . . . . .

## MR. R. MÜLLER.

GRAND HOTEL BLDGS., CAPE TOWN.

*For the Best*

**PIANOS, HARMONIUMS,  
American Organs, Stringed, Brass and  
Reed Instruments.**

Also for Strings and every kind of Musical Requisites, Repairing, Tuning, etc.

R. Müller gives Estimates for Church Organs on application.

R. Müller wants Agents everywhere.

Consignments of Printed Music from Germany, England and America in excellent assortments.

**R. MÜLLER** 7, GRAND HOTEL  
-:- BUILDINGS,

Strand Street, Cape Town.

Telegraphic Address: "RELLUM," CAPE TOWN.



**Deynes, Mathew**

AND  
CO.

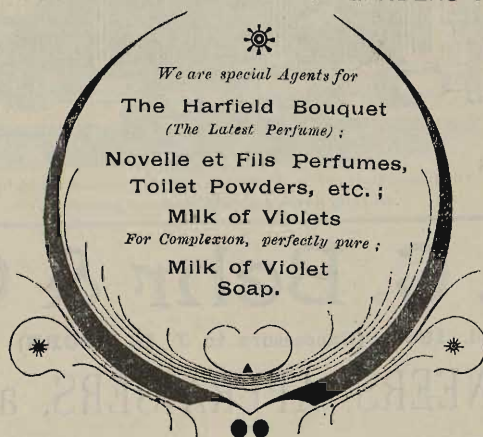
**Wholesale & Retail Chemists**

BY SPECIAL APPOINTMENT TO HIS EXCELLENCY LORD ROSMEAD,  
AND THE PRESIDENT OF THE O.F.S., ETC.

WE MAKE A SPECIAL FEATURE OF OUR — —

## DISPENSING DEPARTMENT.

MEDICINES SENT AT ANY TIME TO GARDENS OR SUBURBS.



## WHOLESALE AND MANUFACTURING DEPARTMENT.

We have lately imported a Complete Plant, which will enable us to Compete with THE ENGLISH MARKETS with a guaranteed article. We ask for a trial, as we feel sure of giving satisfaction, both as to Quality and Price.

## PHOTOGRAPHIC DEPARTMENT

*Is Replete with every Novelty in the shape of*

**Cameras, Lenses, Plates, Albums**

*And we have a large assortment of LOCAL VIEWS.*

LOOK AT OUR WINDOWS, AND SEND FOR CATALOGUE OR PRICE LIST.

We have a DARK ROOM on the Ground Floor, fitted with Electric Light, for the use of Amateurs — FREE. Negatives are developed, Prints taken, at the LOWEST RATES. Enlargements Made.

**RIEGELHUTH & SONS,**

PIANO AND ORGAN DEPOT, CAPE TOWN.

Sole Agents for Hagspiel & Co.; John Kuhse, Dresden; E. Krauss J. Ramsperger & Co., Stuttgart; G. Klingmann & Co., and Compagnie Concordia, Berlin. American Organs by Story & Clark Organ Co. and other high-grade makers.

The recognised  
reliable House

for first  
class values.

ESTD

RIEGELHUTH

1865



All Musical Instruments, Accessories, &c. of best makers kept in stock.  
*All fully descriptive catalogues and price lists free.*

**Geo. C. Behr & Co.**

Estd. 1865. (Successors to J. R. MOORE)

AUCTIONEERS, APPRAISERS, and  
 GENERAL COMMISSION AGENTS.

**30, DARLING STREET,**  
Opposite Grand Parade.

Commission and Cattle Sales on the Grand Parade every  
Wednesday and Saturday.

Inside Sale of Merchandise every Tuesday,

Landed Property and Furniture Sales by appointment.

Valuations made for all purposes.

An assortment of Furniture always on hand suitable for  
Cottage or Mansion.

Inspect our Sale Rooms at the above address.

# SOUTH BRITISH

## FIRE and MARINE INSURANCE Co.

LONDON OFFICES: JERUSALEM CHAMBERS, CORNHILL, E.C.

Capital authorised, £1,900,000; Subscribed, £1,227,932

**PAID UP CAPITAL AND ACCUMULATED FUNDS  
EXCEED £233,000.**

The Distinguishing Characteristics of this Old Established Company are:

**I. Undoubted Security.**—The Amount of Funds held by this Company, together with the **UNLIMITED LIABILITY** of a large and wealthy body of Shareholders, point it out as amongst the most eligible of Offices doing business in this Colony.

**II. Lowest Current Rates.**—The Company, owing to the large number of Risks on its Books, is enabled to insure the different Classes at their **MINIMUM Rates**, the same being rated according to the nature of the Risk to be Insured. An individual is, therefore, imprudent to run his own Risk when the Company can relieve him of the danger of loss at the smallest possible cost.

**III. Prompt and Liberal Settlement of Claims.**—All Losses are adjusted by independent Assessors, and paid immediately on proof.

. . . . .

Chief Office for Transvaal—Insurance Chambers, next Standard Bank, Commissioner Street, Johannesburg. E. S. NORRIE, Branch Manager.

Chief Office for Natal—West Street, Durban. A. Findlay and Co., Chief Agents. DUDLEY MILLER, Secretary.

Chief Agent for Orange Free State—M. LEVISEUR, Bloemfontein.

HEAD OFFICE FOR SOUTH AFRICA—South British Building, 3, St. George's Street, Cape Town.

HERBERT C. PILCHER, Manager for South Africa.

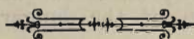
TELEGRAPHIC ADDRESS: "BRITISH, CAPE TOWN."



**T. W LEWIS and Co.**




**GROCCERS**  
AND  
**PROVISION MERCHANTS.**



LOWER . . .

**ST. GEORGE'S STREET.**

SEE ILLUSTRATION OF PREMISES.





Photo—Gow

THE PREMISES OF T. W. LEWIS & Co.,  
GROCCRS & PROVISION MERCHANTS.



Photo—Bruton.

THE PREMISES OF A. DONNER & CO., LAMPWARE AND FANCY GOODS WAREHOUSE,  
CASTLE AND LONG STREETS.

# A. DONNER & Co.,

---

CORNER OF . . . . .

*Long and Castle Streets,*

CAPE TOWN,



DIRECT ATTENTION to the Large Assortment of GOODS in their various Departments comprising

PIANOS

ENGRAVINGS & PHOTOGRAPHS

LAMPS - - - -

**CHINAWARE, GLASSWARE**

- - TINWARE

ENAMELLEDWARE, WOODENWARE,

**TOYS AND FANCY GOODS.**

---

An Inspection Respectfully Invited.



# STAR LIFE ASSURANCE SOCIETY.

ESTABLISHED 1843.

**Head Office for South Africa:**

34, ST. GEORGE'S STREET, CAPE TOWN.

**Branches at**

JOHANNESBURG, DURBAN, AND BLOEMFONTEIN.

Funds in Hand - £4,000,000.

**NEW BUSINESS FOR 1896 OVER TWO MILLIONS.**

## NEW POLICIES ISSUED.

|                                   |       |            |
|-----------------------------------|-------|------------|
| During the Five Years ending 1888 | - - - | £3,740,365 |
| " " " " 1893                      | - - - | £6,496,288 |

## SPECIAL FEATURES OF THE SOCIETY.

- Absolute Security. Moderate Premiums.
- Profits increasing with age of Policy.
- World-wide and Indisputable Policies.
- Free or Paid-up Policies.
- Protection against Accidental Lapsing.
- Surrender Values held for One Year.
- Immediate Payment of Claims.

## BONUSES

Are declared every five years under the Compound Bonus System and which is proved to possess the *greatest advantages*, at the last division New Assurers receiving an addition equal to £1 11s. 0d. per cent per annum, and older Policy holders as much as £2 14s. 0d. per cent. per annum. Interim Bonuses are paid on all Policies which have previously shared in Bonus.

## INTENDING ASSURERS

Should send for the Prospectus and Annual Report.

BULLEN BROS., General Managers.



ZPA 45(8) CAPE  
TOWN