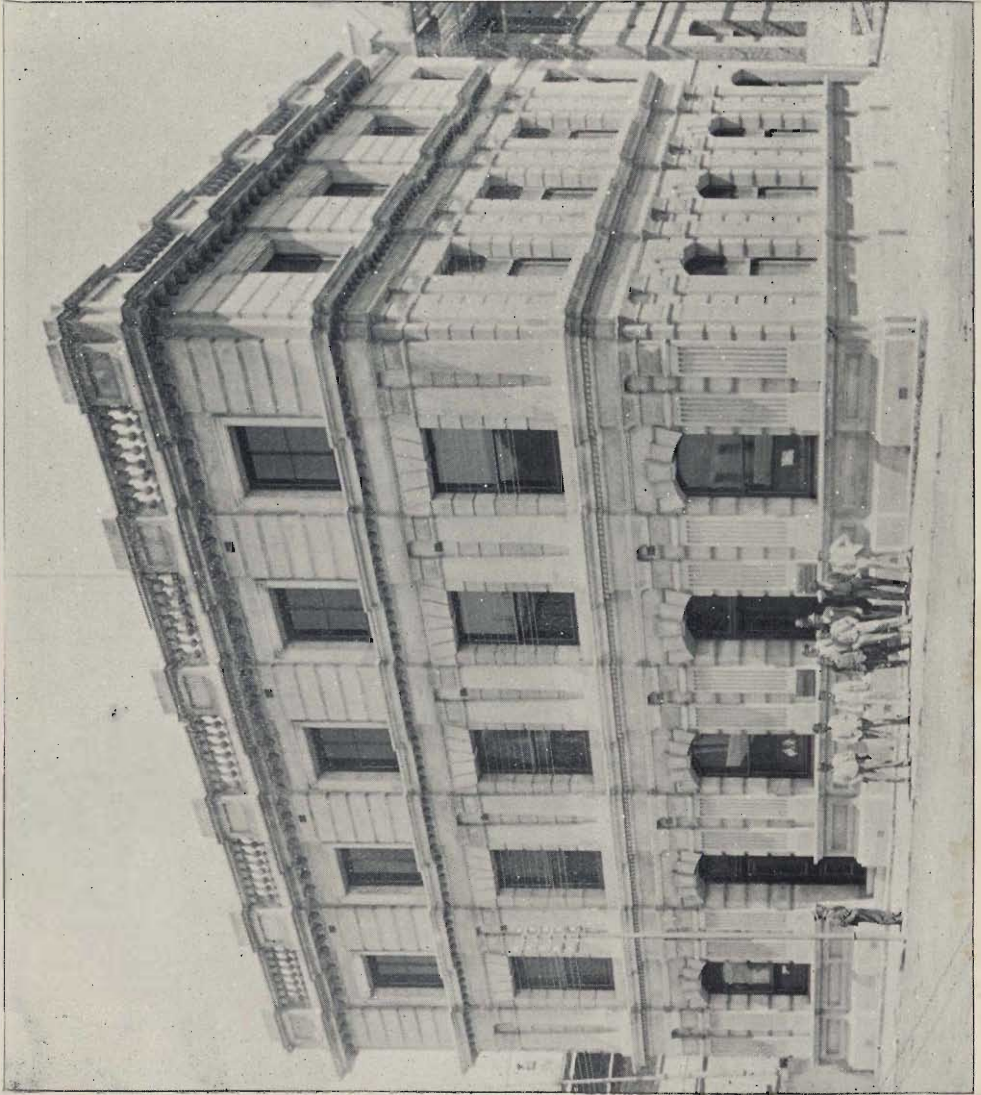




Photo, Gow.

THE PREMISES OF ALEX CAMERON & Co.,
SHIP CHANDLERS, &C., LOWER ST. GEORGE'S STREET.



THE PREMISES OF W. ANDERSON & Co.

Photo-Chat

Wm. Anderson *and* Co.,

MERCHANTS,

COALING AGENTS AND 'HIP BROKERS,

CAPE TOWN & SIMON'S TOWN.

AGENTS BUREAU VERITAS :

| | |
|--------------------------------|--------------------------------|
| P. & O. Steam Navigation Co. | British India Steam Navigation |
| Shaw Savill & Albion Co., Ltd. | Co., Ltd. |
| Geo. Thompson & Co., | New Zealand Shipping Co., Ltd |
| Aberdeen Line. | Massageries Maritimes De |
| Wm. Lund, Anchor Line. | France. |

Fortnightly Service to New Zealand and Australia
(via Hobart):

SHAW SAVILL AND ALBION CO., LTD., **RUNNING ALTERNATELY WITH** **NEW ZEALAND SHIPPING COMPANY LTD.,**

| LINE OF STEAMERS : | | LINE OF STEAMERS : | |
|--------------------|-------------|--------------------|-------------|
| "GOTHIC" | 7,755 Tons. | "RIMUTAKA" | 4,515 Tons. |
| "IONIC" | 4,748 " | "KAIKOURA" | 4,507 " |
| "TAINUI" | 5,031 " | "RUAPEHU" | 4,202 " |
| "AOTEA" | 6,864 " | "TONGARIRO" | 4,133 " |
| "MAORI" | 5,317 " | "RUAHINE" | 6,127 " |
| "MAMARI" | 3,883 " | "MATAURA" | 6,688 " |
| "MATATUA" | 3,322 " | "OTARAMA" | 3,808 " |
| "PAKEHA" | 4,331 " | "RAKAIA" | 6,688 " |
| "RANGATIRA" | 4,045 " | "PEKOA" | 4,050 " |
| "TOKOMARU" | 6,238 " | "WAIKATO" | 4,767 " |

Geo. Thompson & Co., White Star Aberdeen Line of Steamers calling here regularly once a month to and from London and Australia:—

LINE OF STEAMERS :

| | | | |
|----------------------|-------------|----------------------|-------------|
| "NINEVEH" | 3,808 Tons. | "DAMASCUS" | 3,609 Tons. |
| "THERMOPYLAE" | 3,711 " | "AUSTRALASIN" | 3,661 " |
| | | "ABERDEEN," | 3,659 Tons. |

Full particulars as to dates of sailing, Freight Passage on application.

Wm. Spilhaus & Co.

MERCHANTS,

Importers of Coffee, Rice, Sugar, Groceries, Oilmen's
Stores, Wines, Spirits, Beers, Cigars. etc.,

42, STRAND STREET, CAPE TOWN.

SOLE AGENTS FOR

R. W. Cameron & Co.'s Kerosene Oil,

LIGHT OF THE AGE 150°.

ANGLO - SCANDINAVIAN CONDENSED MILK

(PARIS GOLD MEDAL BRAND)

FRISTER AND ROSSMAN'S SINGER SYSTEM

SEWING MACHINES.

ANDREW USHER & CO.'S GLENLIVET WHISKIES.

OGILVIE'S BEN ROYAL WHISKY.

POMMERY & GRENO'S CHAMPAGNE.

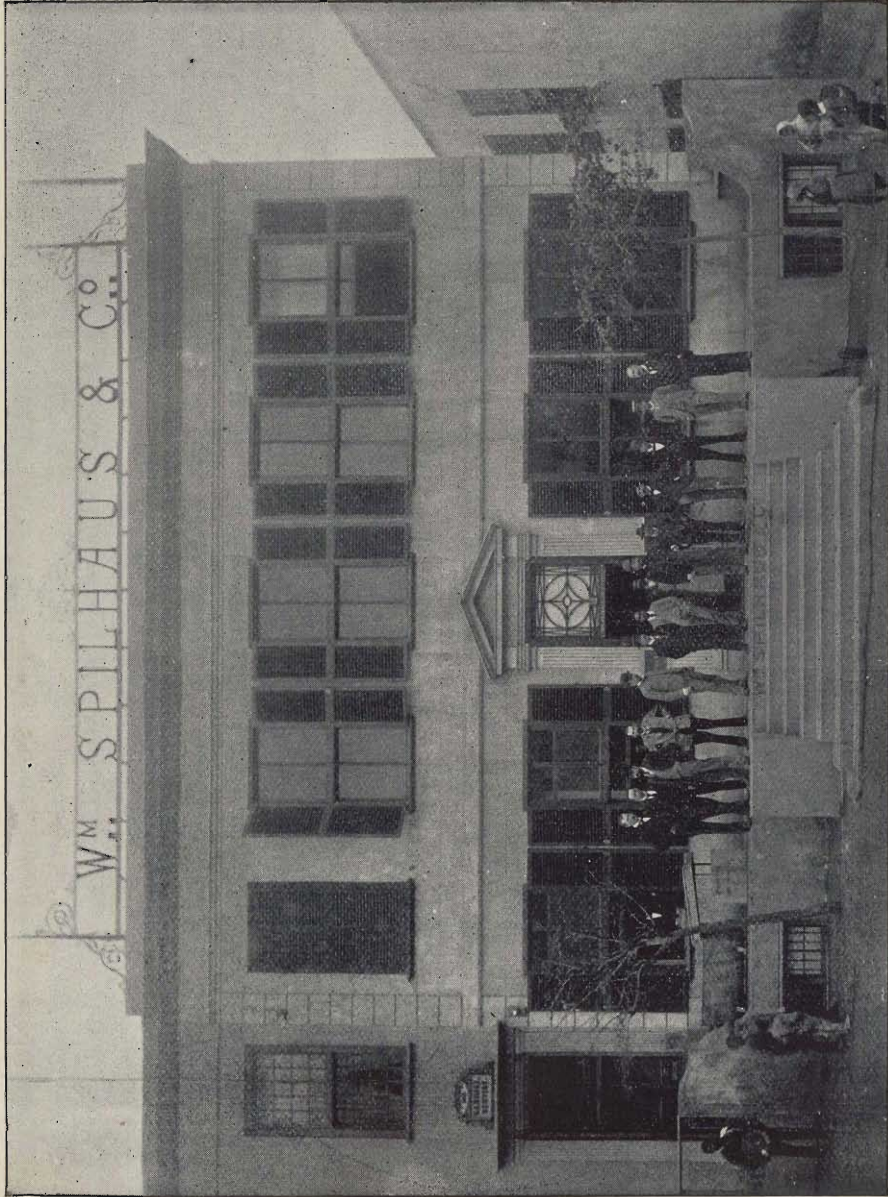
CHAS. HEIDSIECK'S CHAMPAGNE.

ROBERT PORTER & CO.'S BULL DOG ALES & STOUT.

CRAWFORD'S "HOME QUEEN" CAKE FLOUR.

ALLSOP'S "RED HAND"

SUPERIOR ALE AND STOUT.



THE PREMISES OF W.M. SPILHAUS & CO., MERCHANTS, STRAND STREET.



THE HOUSES OF PARLIAMENT.

COLONIAL ORPHAN CHAMBER

AND

Trust Company,

No. 4, CHURCH SQUARE, CAPE TOWN,

P. O. BOX 14,

TELEGRAPHIC AND CABLE ADDRESS: "FIDELITY."

ESTABLISHED 31st MARCH, 1846.

| | | | | |
|--------------|-----|-----|-----|---------|
| CAPITAL | ... | ... | ... | £20,000 |
| RESERVE FUND | ... | ... | ... | £34,000 |

FOR the Administration of Estates and Properties, as Executors, Administrators, Tutors, Curators, Trustees of Insolvent Estates, and under Ante-Nuptial Contracts, Inspectors, Assignees, Agents for Residents and Non-Residents, Liquidators of Joint Stock Companies and Firms.

For the Recovery of Bonds, Bills, and other Debts.

For advancing Money on First Mortgage of Landed Property and other Approved Securities, Investing of Capital, Purchase and Sale of Landed and other Property.

DIRECTORS.

| |
|--|
| PAUL DE VILLIERS (Attorney), Chairman. |
| HARRY BOLUS. C. T. VOS. |
| J. C. HOFMEYR. H. M. ARDERNE. |
| C. M. BERNARD. J. A. REID. |

Persons desirous of appointing them will kindly nominate them as "The Colonial Orphan Chamber and Trust Company."

The Insolvent Branch is conducted by the Secretary, for whose acts the Company will be responsible.

GUARANTEE BRANCH.

For Guaranteeing the Honesty, Integrity, and Fidelity of Persons in positions of Trust, upon payment of an Annual Premium.

The Policies of the Company are accepted by the Imperial, Colonial, Transvaal, and Orange Free State Governments, Municipal and Divisional Councils, Banks, other Public Institutions and Societies.

The Directors meet every Tuesday at 10 a.m. for the dispatch of Business.

G. W. STEYTLER, *Secretary.*

A. R. McKenzie & Co.,

**Landing, Shipping, Forwarding,
Custom House and Baggage Agents,**

HEAD OFFICE—

Corner of Waterkant and

. . . St. George's Streets,

CAPE TOWN.

*All kinds of Dock Work Undertaken,
including Stevedoring in All
its Branches.*

Cartage Contractors to the Cape Government Railways.

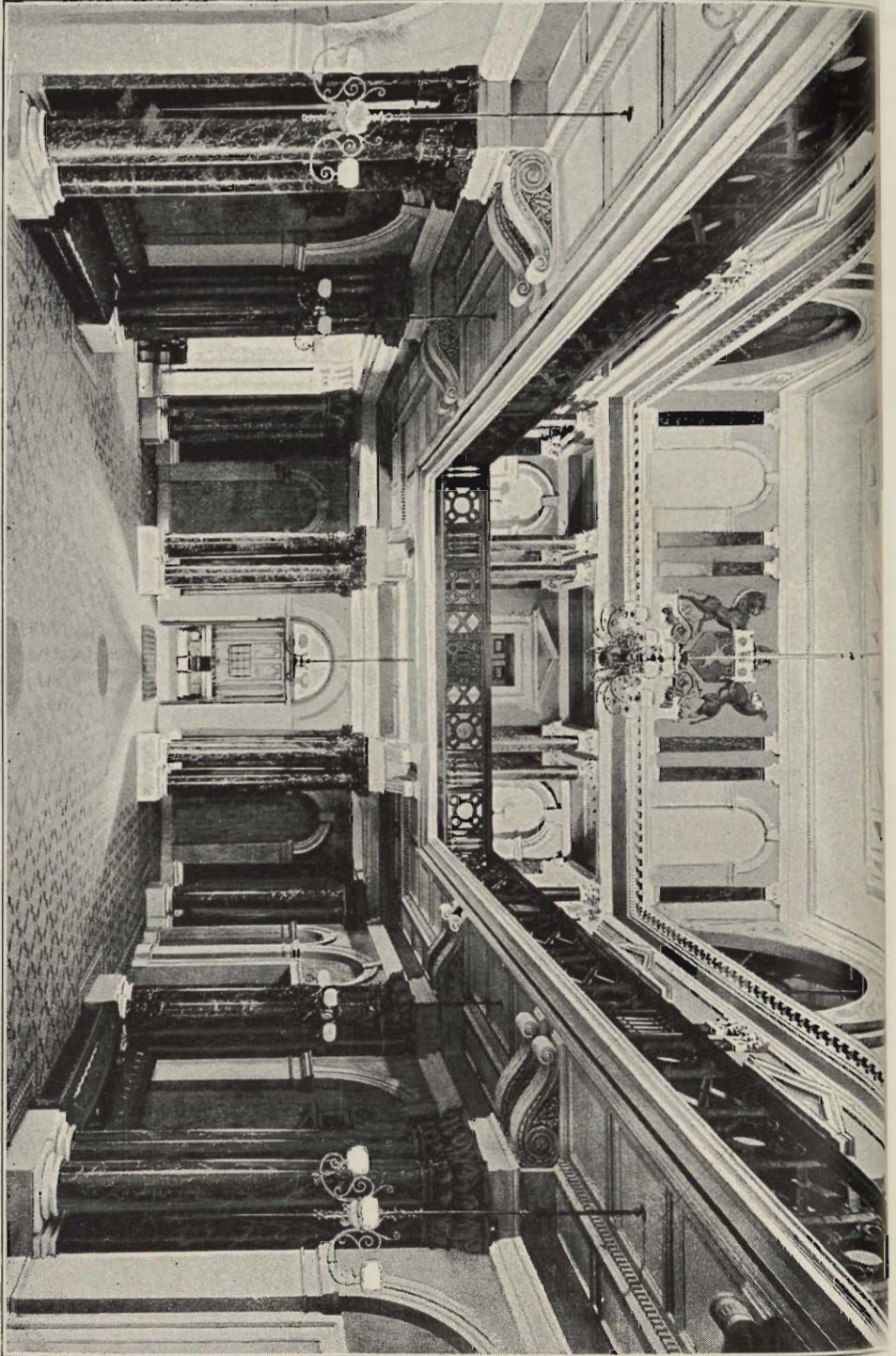
Goods Entered and Cleared through Customs and
Forwarded to All Parts of the World.

Baggage Collected from Cape Town Railway
Station and Delivered on Board
any Steamer.

AGENTS FOR GEO. W. WHEATLEY & Co.'s GLOBE
PARCEL EXPRESS.

AGENTS FOR THE STEAM TUGS AND WATER TENDERS

“Alert” and “Enterprise.”



THE VESTIBULE OF THE HOUSES OF PARLIAMENT.



J. SEDGWICK & Co.,

WINE & SPIRIT MERCHANTS

AND DISTILLERS,

Were awarded the GOLD MEDAL for Cape Wines

AT THE

PARIS EXHIBITION, 1889,

And are holders of Five other Gold Medals.

— — — — —
 Holders of the Largest Stocks of South
 African Wines.

| | | | |
|----------------------|-----|-----|--|
| <i>Head Office</i> | ... | ... | 2, St. George's Street, Cape Town. |
| <i>Depots</i> | ... | ... | Napier Street, Somerset Road, Bree Street, Mechau Street, Chiappini Street, Cape Town. |
| <i>Hamburg Agent</i> | ... | ... | G. Vogtmann. |
| <i>Distillery</i> | ... | ... | Wellington, Cape Colony. |

CAPE GOVERNMENT RAILWAYS



SOUTH AFRICA'S SUNNY SKIES AND DRY AIR

versus

EUROPEAN RAIN, FOG, FROST AND SNOW.

The magnificent steamers of the "Castle" and "Union" Lines, reach Cape Town in from fourteen to nineteen days, after what has been well described as a

SUMMER VOYAGE.

Passengers for the Interior disembarking at Cape Town, escape the rough seas and concomitant hardships of the coasting passage.

THROUGH TICKETS ARE ISSUED TO THE HEALTH RESORTS OF SOUTH AFRICA,

Ceres, the Karoo, Matjesfontein, Beaufort, Vryburg, Mafeking, Queenstown Cradock, Aliwal North, Bloemfontein, Kroonstad, &c., &c.,

AND

The South African Gold and Diamond Fields.

Electrically Lighted Dining and Sleeping Saloon Trains, conveying first-class passengers only, and provided with every comfort and convenience, leave Cape Town every Thursday evening at 8 o'clock for

Kimberley, Bloemfontein, Johannesburg and Pretoria.

AND

SLEEPING SALOON TRAINS LEAVE DAILY AT 9 P.M. FOR ALL UP-COUNTRY STATIONS.

BEDDING for use on the journey may be obtained at a charge of 2/6 per set. Special facilities are afforded by the Cape Railway Department for Landing and Clearing Baggage at Cape Town Docks (see official cards on all steamers and Official Tariff Book published monthly.

Further information and through tickets may be obtained of Messrs. Thomas Cook & Son, tourist agents, for the Cape Government Railways, at the Union Steamship Company's Offices, South African House, Bishopsgate Street, London, and at the offices of the Castle Mail Packets, 3 and 4, Fenchurch Street, London. Agent-General for the Cape of Good Hope, Sir David Tennant, K.C.M.G., 112, Victoria Street, Westminster, London, S.W.

C. B. ELLIOTT,

General Manager.

Cape Town, November, 1896.