

THE
CAPE
TOWN
GUIDE.

ILLUSTRATED.



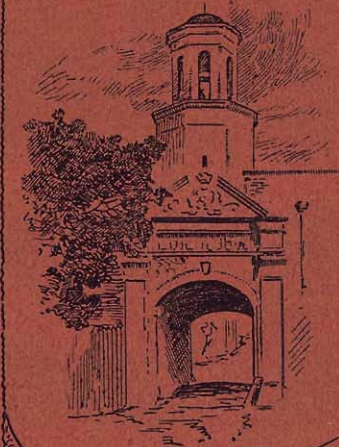
Printed and Published by .
DENNIS EDWARDS & Co.,
44, Shortmarket Street, .
CAPE TOWN.



[SECOND, EDITION.]

THE CAPE TOWN ILLUSTRATED GUIDE

2/-



PRINTED & PUBLISHED
BY
DENNIS EDWARDS & Co.
19, LONG STREET,
CAPE TOWN.

MUTUAL LIFE INSURANCE COMPANY OF NEW YORK.

RICHARD A. McCURDY

President,

Since the establishment of the Mutual Insurance Co. of New York in 1843 it has paid to its policy holders nearly

EIGHTY-FIVE MILLION POUNDS STERLING.

"THE BEST COMPANY IS THE COMPANY WHICH DOES THE MOST GOOD."

Apply for particulars to any of the Company's Agents or to

A. MacCORKINDALE, GENERAL MANAGER FOR SOUTH AFRICA,

P.O. Box 300.

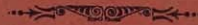
Adderley Chambers, Adderley Street, CAPE TOWN.

Darter Bros. & Walton,



ADDERLEY STREET,
CORNER OF CHURCH STREET,

P.O. Box
174. CAPE TOWN



BOOKSELLERS & STATIONERS,

School Furnishers,

AND

ARTISTS' COLOURMEN.



The Best House for

. . . . Photographic Views.

Darter Bros. & Walton



E. BURMESTER

MANUFACTURING

JEWELLER,

WATCHMAKER,

AND OPTICIAN,

78, ADDERLEY ST., CAPE TOWN.

Agent for the Celebrated Berlin Reading Table and Hanging Lamps (with Round Burners), which received the Gold Medal at the Exhibition.

THE BANK OF AFRICA, LIMITED.

(ESTABLISHED 1879.)

Head Office: 113, CANNON STREET, LONDON, E.C.

Subscribed Capital £1,575,000
 Paid-up Capital £525,000
 Reserve Fund £297,500

BOARD OF DIRECTORS:

AUGUST BARS DORF, Esq.	OWEN R. DUNELL, Esq.
W. FLEMING BLAINE, Esq.	ARTHUR A FRASER, Esq.
AUSTEN, CHAMBERLAIN, Esq., M.P.	ROCHFORD MAGUIRE, Esq.
JOHN YOUNG, Esq.	

JAMES SIMPSON (Resident at Cape Town), General Manager.

BRANCHES.

CAPE COLONY.

Aliwal North	Graham's Town	Paarl
Cape Town	Kimberley	Port Elizabeth
Cradock	King William's Town	Queen's Town
East London	Oudtshoorn	

NATAL.

Durban	Newcastle	Pietermaritzburg
„ Point Durban (Sub-Branch)		

ORANGE FREE STATE.

Bethlehem	Harrismith	Ladybrand
Bloemfontein	Kroonstad	Winburg
Fauresmith		

Jagersfontein (Sub-Branch)

SOUTH AFRICAN REPUBLIC.

Barberton	Johannesburg	Klerksdorp	Pretoria	Vrijheid
-----------	--------------	------------	----------	----------

EAST COAST OF AFRICA.

Beira	Lourenço Marques (Delagoa Bay).
-------	---------------------------------

RHODESIA.

Bulawayo	Salisbury	Umtali
----------	-----------	--------

The Branches of the Bank discount approved Bills; make Advances on Gold, Diamonds, Produce, Merchandise, and other approved Securities; grant Drafts, payable in London, Cape Colony, Orange Free State, Transvaal, East Coast of Africa, Rhodesia, and on Correspondents in India, China, Australia, America, and New Zealand; buy and receive for Collection Bills of Exchange; issue Letters of Credit; undertake the Purchase and Sale of Colonial and other Securities, and hold them for safe custody; receive Interest or Dividends as they become due; and conduct all kinds of General Banking business.

Deposits of money are received for fixed periods, on terms which may be ascertained on application at any of the Branches.

Gold is purchased or received on consignment for shipment to London and realisation. The Bank has an Assay Department, under charge of a competent Assayer, at Johannesburg, S.A.R.

SUB-BRANCH.—Letters for Jagersfontein should be addressed to Fauresmith Branch, and for the Point to Durban Branch.

JAMES SIMPSON, General Manager.



Photo S. B. Barnard.

STRAND STREET.



AFRICAN BANKING CORPORATION LIMITED, ADDERLEY STREET.

African Banking Corporation, Limited.

Registered Capital, £2,000,000.

Subscribed 59,529 Shares, £10 each—
£595,290; Called up £5 per
Share—£297,645.

Reserved Liability - - £297,645.
Reserve Fund - - - £5,000.

HEAD OFFICE: 43 TO 46, THREADNEEDLE ST., LONDON, E.C.

DIRECTORS:

EDWARD WEBB, Esq., Chairman.
JAMES DALISON ALEXANDER, Esq., of Messrs. Alexander, Fletcher & Co.
HERBERT E. M. DAVIES, Esq., Chairman, Consolidated Gold Fields of S. Af. Ltd.
AUGUSTUS DURANT, Esq., of Messrs. A. Durant & Co., 32, Gresham Street, E.C.
SIR FRANCIS KNOLLYS, K.C.M.G., C.B., Director of the Great Eastern Railway Co.
WILLIAM FITZGERALD PILCHER, Esq., late of Messrs. J. G. & J. Pilcher & Sons.
THOMAS RUDD, Esq., Director of the Consolidated Gold Fields of South Africa, Ltd.
WILLIAM JAMES THOMPSON, Esq., Chairman of the National Discount Company, Ltd.

GEORGE WILLIAM THOMSON, Chief Manager.

BANKERS IN LONDON:

London Joint Stock Bank, Limited.
Commercial Bank of Scotland, Limited.

Prescott, Dimsdale, Cave, Tugwell & Co., Ltd.
Parr's Bank, Ltd. (Cavendish Square Branch).

NEW YORK, U.S.A., 74, WALL STREET, E. J. FRASER-CAMPBELL, Agent.

BRANCHES IN SOUTH AFRICA:

BULAWAYO, Godfrey Cripps.
CAPE TOWN, Allan Wright.
DURBAN, Geo. MacKeurtan.
EAST LONDON, W. A. S. Fairbairn.
GRAAFF-REINET, W. A. Wilson.
GRAHAM'S TOWN, J. R. Phillips.
JOHANNESBURG, David Fraser, J. L.
Johnston (Sub.)
KIMBERLEY, Chas. Lipp.
KING WILLIAM'S TOWN, Robert Smith.

MALMESBURY, W. J. Marai
MOLTENO, E. F. Koevoort (Atingg).
MONTAGU, P. A. Euvrard, Jun.
PAARL J. H. Louw.
PORT ELIZABETH, C. B. Lonsdale.
PRETORIA, Geo. E. Meadway.
QUEEN'S TOWN, J. A. A. Cooper.
SALISBURY, Chas. Freeman
UMTATA, F. B. Fielding.
WORCESTER, C. H. Beck.

ROBERT LITTLEJOHN,

General Manager in S. Afric.

General Manager's Office, Cape Town,
November, 1896.



M. Levenberg,

DIRECT IMPORTER OF

JEWELLERY . . .

. . . . WATCHES,

SILVER AND ELECTRO-

. . . PLATED GOODS

All the Latest Novelties of the Home
Markets, suitable for Wedding,
Birthday and other Presentations.

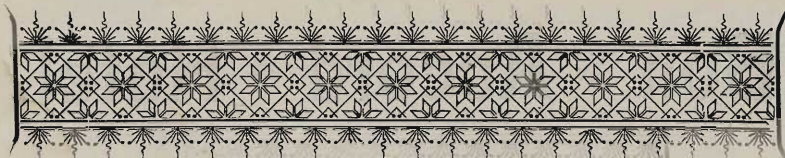
OPERA GLASSES.

Gold and Steel SPECTACLES AND
EYEGASSES to suit all Sights.

Sole Depot for the "True as the Sun Watch."

**GRAND HOTEL BUILDINGS,
ADDERLEY STREET.**





J. WOODHEAD & SONS,

TANNERS - - -

AND

- - - IMPORTERS.

Proprietors of the Standard Boot Factory.

TELEGRAPHIC ADDRESS "BOOTS," P.O. BOX 80A

34, STRAND STREET,

- - - - CAPE TOWN. - - - -



INTERNATIONAL Bon ☼ Accord ☼ Hotel.

FOR BUSINESS, HEALTH, or PLEASURE.

The Most Healthily Situated Hotel in Cape Town is the International Bon Accord Hotel. It Occupies a Magnificent Site which has absolutely no Equal, being noted for its pure air and freedom from the many unpleasantnesses to which other portions of the town are subject. The following conveniences are on the Hotel Premises: viz., Post, Telegraph, and Money Order Offices, Savings Bank, Cabstand, Tram Terminus and Waiting-room; Beautiful Promenade, Extensive Grounds, Spacious Dining-room suitable for Wedding Breakfasts, Public or Private Dinners, &c. Luncheon and Table d'Hote at separate tables available for non-residents. Moderate Tariff. Special terms for prolonged visits. *Tram Cars to and from the Railway Station*, and all parts of the City and Suburbs, every five minutes (day and night).

:o:

THE TRELIS PROMENADE.

“Seated under this airy archway the visitor may well fancy him or herself miles away from the city, for here the air is bright and bracing, and the dust and smells that so often permeate the town thoroughfares are altogether unknown. . . . Although so fortunate in its natural surroundings, free from blazing heat and choking dust, and enjoying all the benefits of pure air, the Hotel is within easy reach of the city, being a pleasant 10 minutes' walk. A cabstand is at the entrance, and trams run to and from the Hotel, every 5 minutes, to all parts of the town. Within a very short distance are Government House and Avenue, also the Houses of Parliament, the Public Library, Museum, &c., while the Good Hope Hall, frequently used for high-class concerts and other entertainments, is close at hand.”—*The Cape Illustrated Magazine*.

INTERNATIONAL
BON ACCORD HOTEL,
CAPE TOWN.

W. T. O'CALLAGHAN, Proprietor.



TRELLIS PROMENADE,
INTERNATIONAL BON ACCORD HOTEL.



THE PREMISES OF H. BEVERN,
FURNITURE WAREHOUSE, LONG STREET.

H. Bevern, - - - -

(ESTABLISHED 1855)

27, LONG STREET, CAPE TOWN

OPPOSITE THE TRAM STATION.



DINING ROOM SUITES,

DRAWING ROOM SUITES,

BEDROOM SUITES,

At a PRICE and of a QUALITY to effectually
 compete with any advertised cheap Lines.

:0:

ALL KINDS OF CABINET AND UPHOLSTERY WORK EXECUTED
 WITH CARE AND DISPATCH.

ESTABLISHED 1869.

Cornwell & Company,

MERCHANT TAILORS,

ST. GEORGE'S STREET, CAPE TOWN,

ARE CONSTANTLY RECEIVING

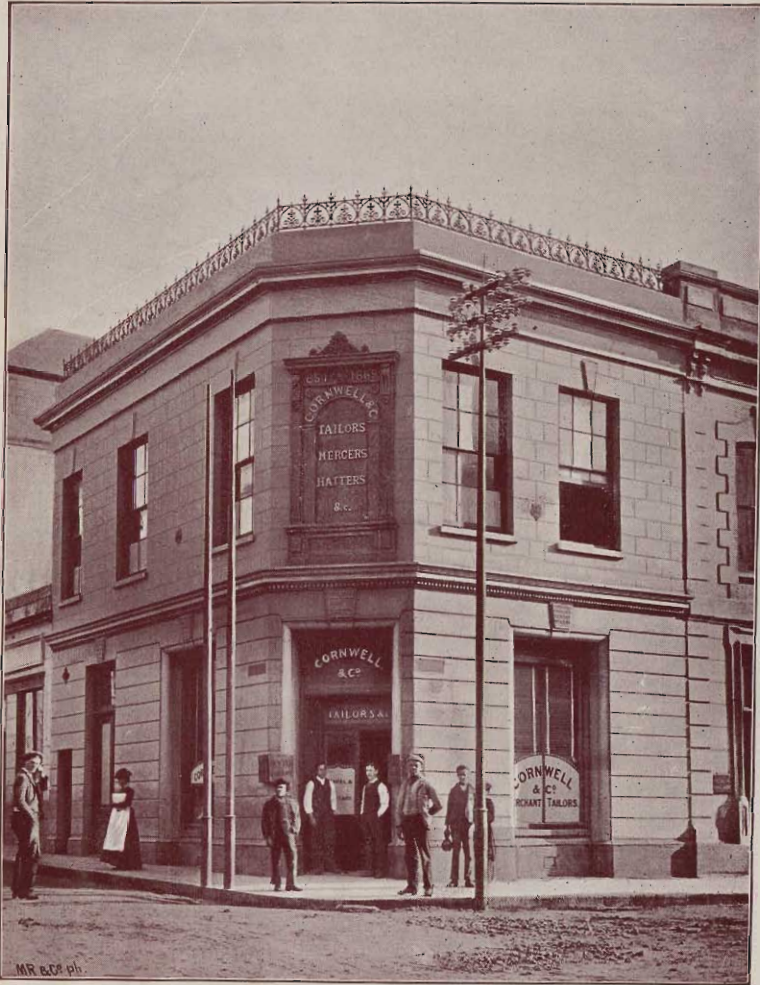
New and Fashionable Goods

OF THE BEST QUALITY.

Superfines,		Serges,
Diagonals,		Cheviots,
Vicunas,		Bedford Cords,
Corkscrews,		Whipeords,
Worsted, Tweeds,		Khaki, etc, etc.,

C. & Co. direct attention to a special feature of their business. The cutting is done by the members of the firm only, and thus Customers can ensure their orders being carried out with the utmost care by responsible persons.

SAMPLES AND SELF-MEASUREMENT FORMS
FREE ON APPLICATION.



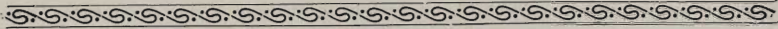
THE PREMISES OF CORNWELL & CO.,
MERCHANT TAILORS, ST. GEORGE'S STREET.



THE PREMISES OF J. C. JUTA & Co.
BOOKSELLERS AND STATIONERS, ADDERLEY STREET.

J. C. JUTA & CO.

CAPE TOWN, PORT ELIZABETH & JOHANNESBURG.

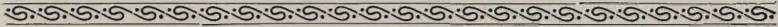


WHOLESALE AND RETAIL

BOOKSELLERS, - - - - -

- - - - - PUBLISHERS, - - - - -

AND STATIONERS.



Publishers of "South African Educational News," "South African Medical Journal," and Publishers by appointment to the Cape University; Publishers of the Supreme Court, Eastern Districts Court and High Court Reports.

Agents for Admiralty Charts.

Depot of the S.P.C.K. Publications.

Sub Agents for the Bible Society.

Importers of Newspapers and Magazines to order.

Keep a splendid stock of General Literature to select from, and very exceptional terms offered to **Libraries and Reading Rooms.**

A very large Stock of all **Educational Books** kept, and any orders placed with J. C. J. & Co., will have their very best attention.

Stationery from the very best London and Continental Makers always to be had.

Messrs. J. C. JUTA & Co. have also a Special Department for the supply of **Drawing and Artists' Materials**, and the large stock is worthy of attention.

Leather Goods, such as Albums, Writing Cases, Card Cases, Purses, &c

Department of Posts and Telegraphs.

POST OFFICE SAVINGS BANKS

POST OFFICE SAVINGS BANKS are established at every Money Order Office in the Cape Colony and Basutoland, and are open for the receipt and repayment of Deposits daily during the hours appointed for Money Order business. A list of offices will be found in the Post Office Guide.

Deposits of one shilling, or any number of shillings, will be received. No person may deposit more than £100 in one year, or more than £500 in the whole, exclusive of interest, or £600 including interest. Interest is allowed at the rate of £3 per cent. per annum.

In urgent cases withdrawals may be made by Telegraph at any Money Order Office in the Colony at which telegraphic business is transacted. The fee payable is 2s. to cover the cost of the application and the reply-telegram. Repayment in such cases is, as a rule, effected within a few hours from the time of application. Immediate repayment may be obtained by Depositors resident in Cape Town on payment of a fee of 6d.

SAVINGS BANK CERTIFICATES.

Savings Bank Certificates of the value of £100 each, bearing interest at the rate of 3 per cent. per annum, may be obtained by any Savings Bank depositor.

No depositor is permitted to hold more than 10 Certificates in addition to the maximum amount allowed by law to be deposited in the Post Office Savings Bank.

MONEY ORDERS.

The issue of Money Orders is now arranged between offices in the Cape Colony and the adjacent States, the Orange Free State, and with the majority of Foreign Countries and British Possessions in the World. The rates of commission are as follows:—

	Inland rates.	Foreign rates.
For an order not exceeding £1 ...	0s. 3d.	—
" " £2 ...	0s. 6d.	0s. 6d.
" " £5 ...	1s. 0d.	1s. 6d.
" " £7 ...	1s. 6d.	2s. 3d.
" " £10 ...	2s. 0d.	3s. 0d.

Remittances may also be made by Telegraphic Money Order between offices in the Cape Colony, the Orange Free State and the South African Republic on payment of a charge of 1s. for telegraphing the advice of each order not exceeding £10, in addition to the usual commission.

POSTAL NOTES.

Postal Notes for fixed sums from 1s. to £1 are now issued at all Money Order Offices in the Cape Colony and Basutoland. These notes are payable only in the Colony.

POSTAL DRAFTS.

Postal Drafts for the collection of sums not exceeding £10 are now obtainable at, and may be drawn upon any Money Order Office in the Colony.

The fee charged for the issue of a Postal Draft for the collection of any amount not exceeding £10 is sixpence such drafts having a maximum currency of one Calendar month only. The charge for a Draft having a currency of one month and fifteen days is 9d.

Invoices or accounts may be attached to the Draft on payment of an additional fee of 1d.

If the money be collected, the balance is remitted by Money Order or Postal Note in a Registered Letter to the drawer, after deducting the cost of the order or note, and a charge at the rate of 6d. for every £1 or portion of £1 collected.

Demands made under the provisions of the Postal Drafts Act have all the same force and effect as legal demands.

No charge is made either for postage or the registration of letters sent on Postal Draft business.

PARCEL POST.

INLAND.—Parcels may be sent between places in the Cape Colony, Basutoland, Natal, Orange Free State and the South African Republic. The Rates of postage being as follows:—

For a Parcel not exceeding 8 oz. ...	4d.
For every additional 4 oz. ...	2d.

TO THE UNITED KINGDOM.—The rates of postage are as follows:—

To or from any place in the Cape Colony:—

For a parcel not weighing more than 1 lb. and for every additional 1 lb. 9d.

The limit of weight of a parcel for the United Kingdom is 11 lbs.

Parcels may also be sent to certain Foreign Countries; for particulars see Post Office Guide.

TELEGRAPH TARIFF.

ORDINARY TELEGRAMS.—10 words for 1/- and 6d. for every additional five words.—**CYPHER TELEGRAMS.**—3d per cent. in excess of ordinary rates.—**PRESS TELEGRAMS.**—One fourth of ordinary rates with a minimum of 1/-.—The above charges apply to telegrams addressed to places in the Cape Colony, Natal, Basutoland, the South African Republic, the Orange Free State and the Portuguese Province of Lourenco Marques. To offices of the *British South Africa Company* and the *Beira Railway Company* the charge is 2/6 for ten words and 3d. for each extra word in addition to the ordinary rates.

LIST OF OFFICES IN CAPE TOWN.

GENERAL POST OFFICE, Administrative Office, Wale Street; Money Order, Savings Bank, Postal Notes and Postal Drafts, 5 Church Street; Poste Restante, Postage and Revenue Stamps, Registration and Private Boxes, 15 Church Street; Parcels Office, 19 Church Street; *Central Telegraph Office, Railway Station Buildings; *Alfred Docks, North Quay, The Docks; Strand Street, A. J. Badclyffe, Chemist's Shop; Plein street, Miss M. A. Aachen's Shop; *Kloof Street, Corner of Rheede Street and Kloof Street; * Mill Street, Corner of Mill Street and Schoonder Street; Sir Lowry Road.
* Also Telegraph Office.



THE STANDARD BANK OF SOUTH AFRICA, ADDERLEY STREET.



THE PREMISES OF J. CHRIST,
PAINTER AND DECORATOR, BOHEMIAN HOUSE, HOUT STREET.