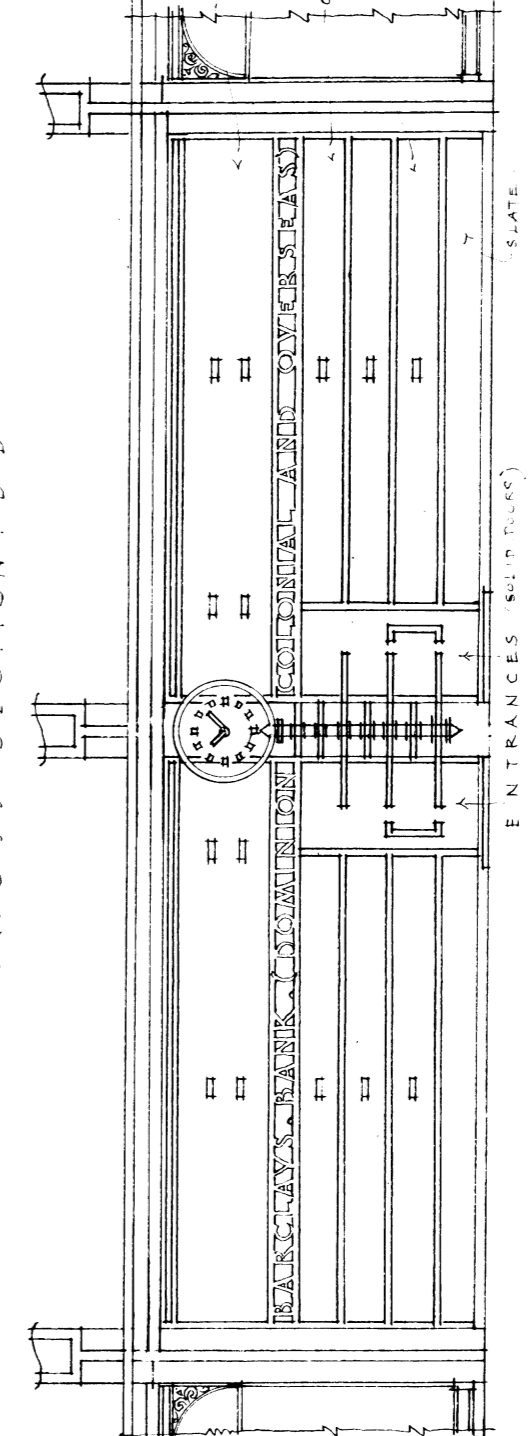
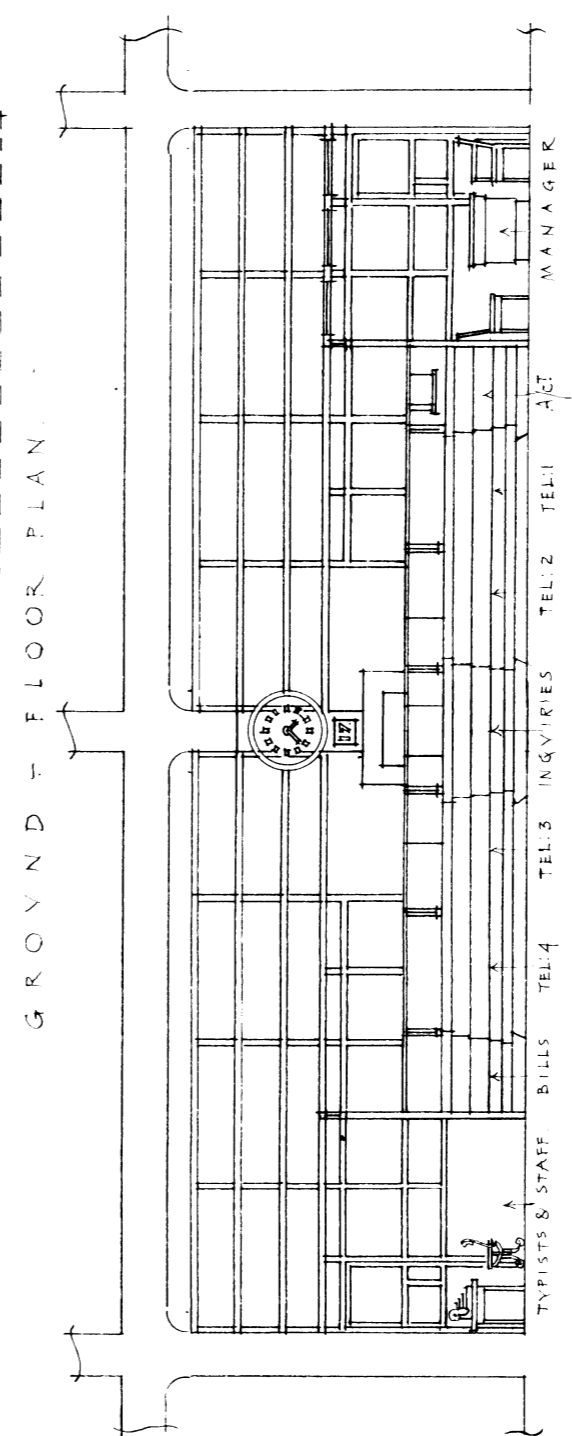
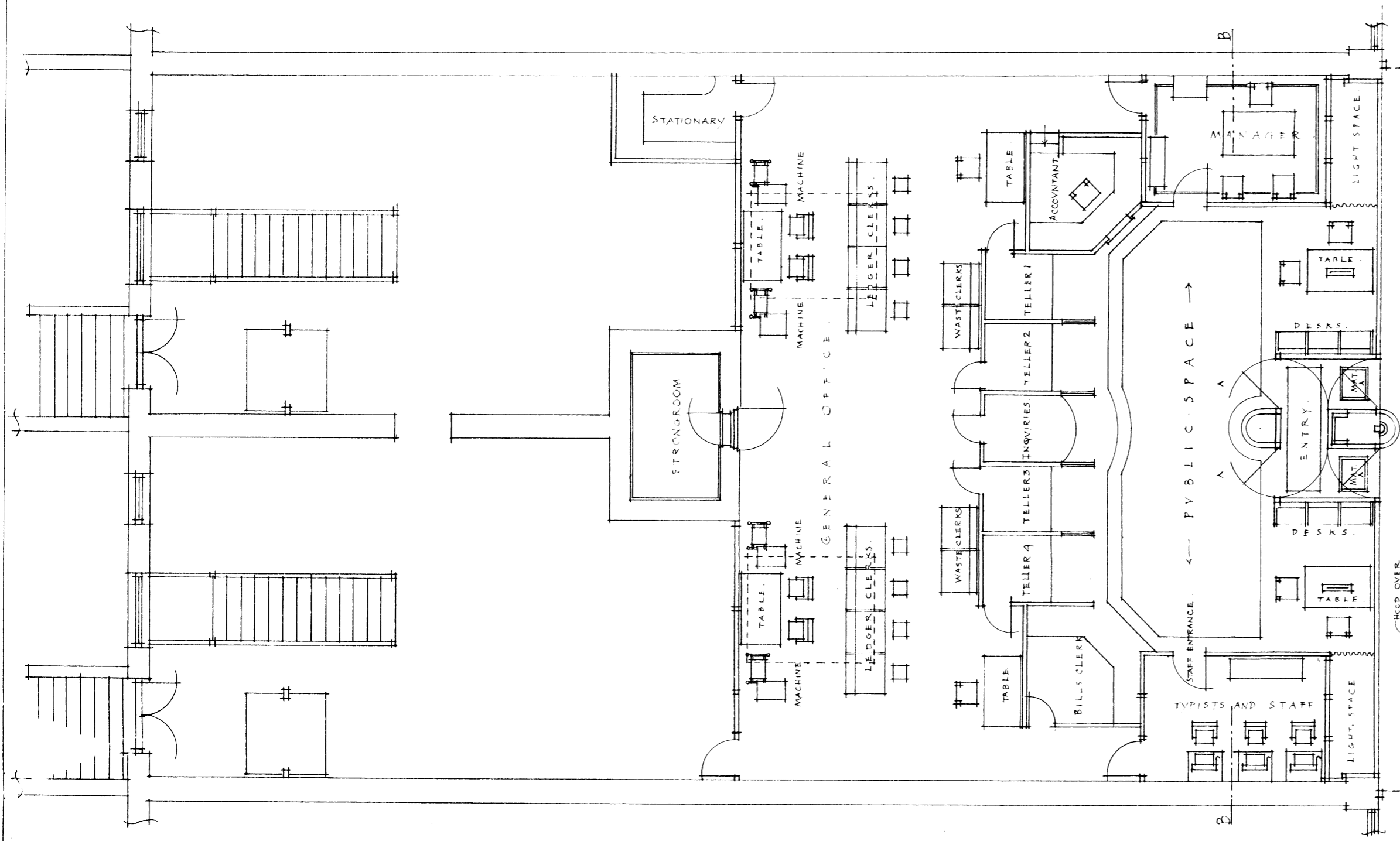


SCHEME. N° 3.
(COMBINING TWO SHOP PREMISES)

BARCLAYS' EAST END BRANCH. BANK
1/8TH SCALE DRAWING OF SUGGESTED IMPROVEMENTS.

SCALE 0 5 10 15 20 FEET.

DRAWING N° B/1109p
SIXTH OCTOBER. 1932.



NORMAN EATON. A.R.I.B.A.
ARCHITECT. PRETORIA.