

Fig. 34.—Mounted specimen of *Buphaga erythrorhyncha*, half natural size.
Note strong bill.

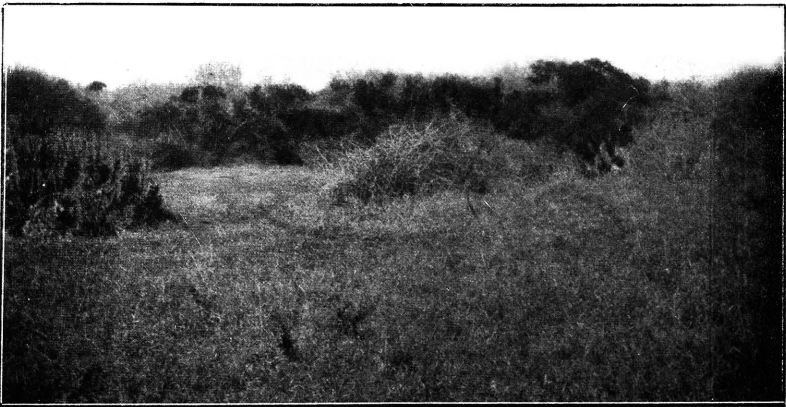


Fig. 35.—White Umfolosi Valley, south bank. A dry "pan" in winter, showing old game-path leading therefrom. Surrounding it is *Euphorbia* sp.

Nagana in Zululand.]

[Curson.

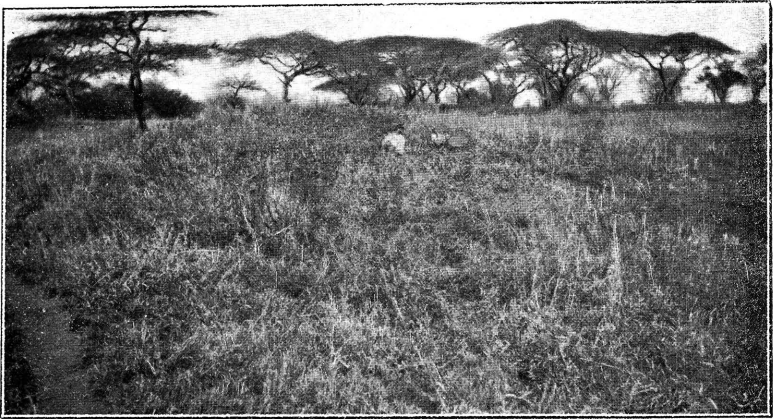
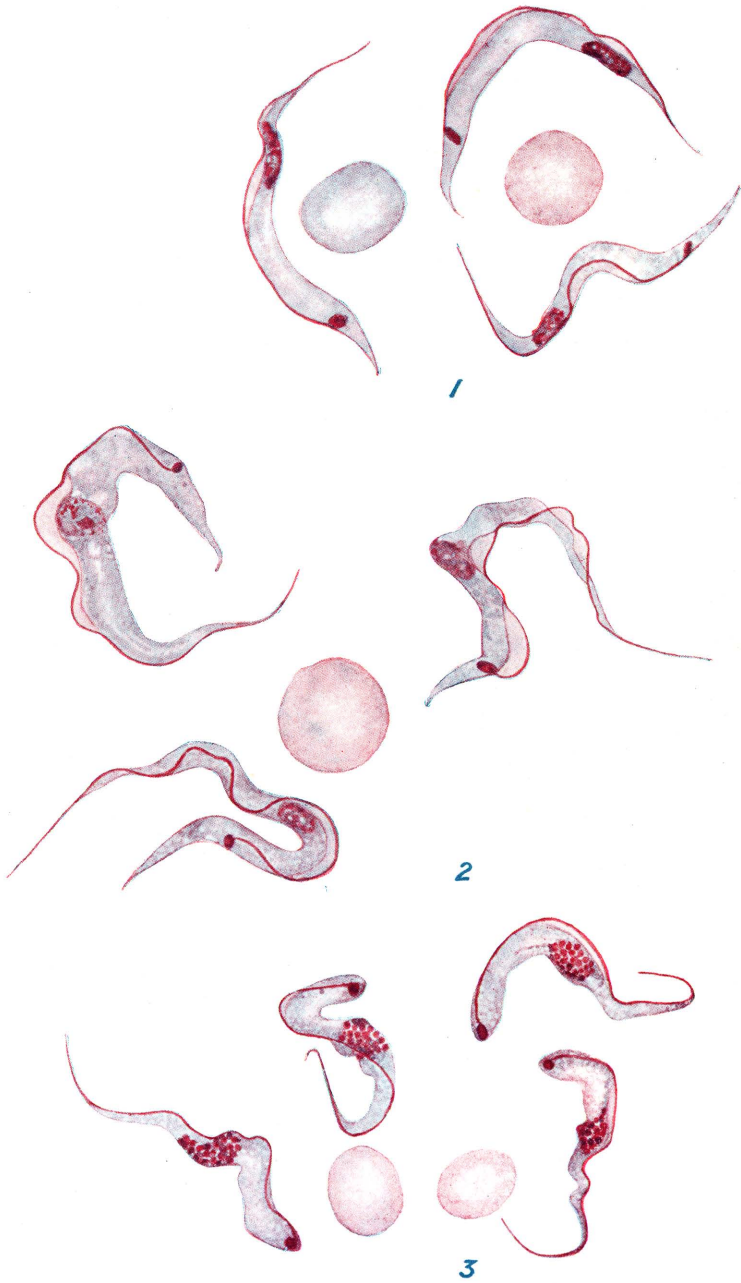


Fig. 36.—White Umfolosi Valley, south bank, near Munywane confluence. A native kraal-site deserted a century ago. Notice mound and broken grinding-stones.

Nagana in Zululand.

[*Curson.*

COLOURED PLATE I.



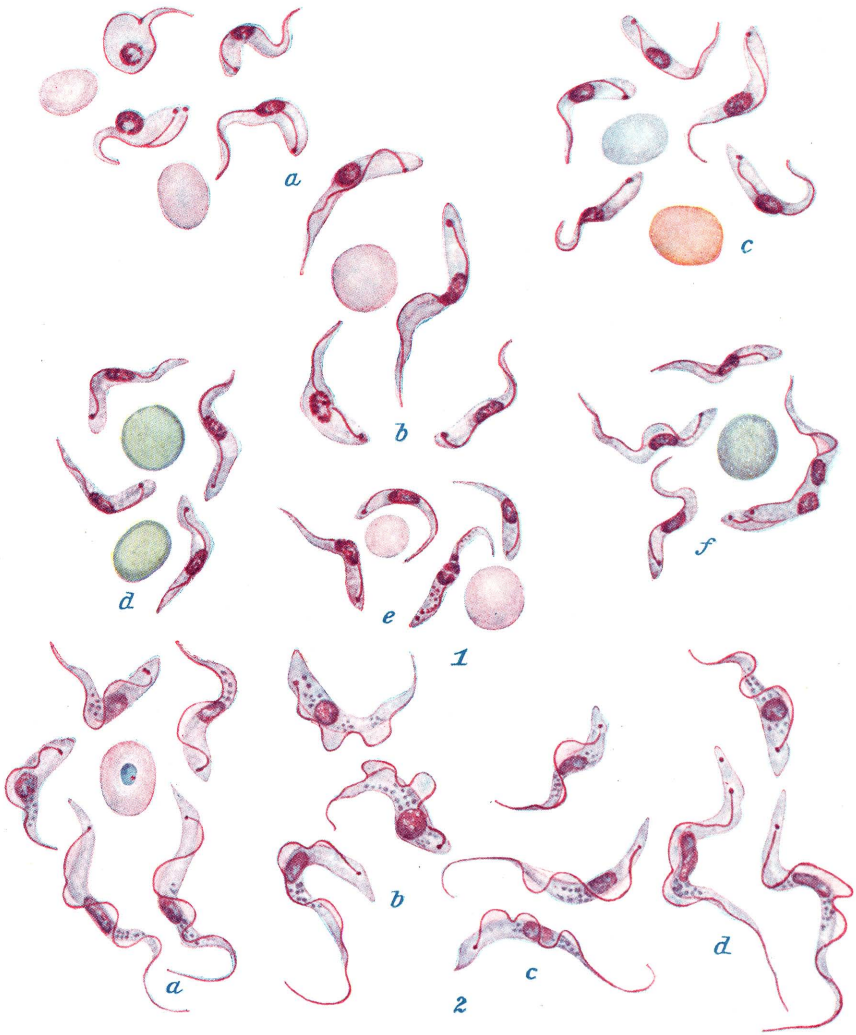
× 2000.

1. *T. lewisi*.
2. *T. theileri*.
3. *T. vivax*.

Rattus natalensis.
Ox.
Ox.

} Natural cases seen in experimental
animals.
Natural infection.

COLOURED PLATE II.



× 2000.

1. { *a.* *T. congolense*.
b. "
c. "
d. "
e. "
f. "

Goat.
Ox.
Pig.
Donkey.
Horse.
Dog.

2. { *a.* *T. brucei*
b. "
c. "
d. "

Dog.
(also *B. canis*).
Mule.
Ox.
Donkey.

All cases of natural infection.