

MArch (Prof)

Mentor: Mr. K. Bakker

Study leader : Mr. P. Vosloo.

SUBMITTED IN FULFILLMENT OF PART OF THE REQUIREMENT FOR THE DEGREE MAGISTER IN ARCHITECTURE (PROFESSIONAL) IN THE FACULTY OF ENGINEERING, BUILT ENVIRONMENT AND INFORMATION TECHNOLOGY.

Gautrans sub-URBAN
train station

Ermendo Bernard Roccon
2015122
Gautrans Rapid Rail System
Hatfield sub-station.

INDEX

CHAPTER 1: BRIEF

1. Introduction	P1
1.1. The site	P1
1.2. Climate	P2
1.3. History of the Arcadia Primary School	P2
1.4. Precedents	P3
Johannesburg International Airport	P3
Metro Mall	P4
2. Purpose and strategic objectives	P5
2.1. Concept	P5
3. a Public transport project	P5
4. How will Gauteng benefit?	P6
5. Station development concepts	P6
5.1. Densification	P6
5.2. Passenger/ people needs	P6
5.3. Land uses	P7
6. Development framework	P7
7. Accommodation list	P7
7.1. Platform screens and doors	P7
7.2. Entrances and exits	P7
7.3. Passenger information	P8
7.4. Ablution facilities	P8
7.5. Concessions	P8
7.6. Side platform station	P8
7.7. Lifts and escalators	P8
7.8. Basic construction	P9
7.9. The sub structure	P9

CHAPTER 2: BASELINE

1 Social issues	P10
1.1 Occupant comfort	P10
1.1.1. Lighting and ventilation	P10
1.1.2. Noise	P10
1.1.3. Views	P10
1.1.4. Access to green outside	P11
1.2. Inclusive environment	P11
1.2.1. Public transportation and routes	P11
1.2.2. Circulation zones	P12
1.2.3. Toilets	P12
1.3 Access to facilities	P12
1.3.1. Banking	P12
1.3.2. Retail	P12
1.3.3. Residential	P13
1.3.4. Commercial	P13
1.4 Participation and control	P13
1.4.1. Environmental control	P13
1.4.2. User adaptation	P13
1.5 Education, health and safety	P13
1.5.1. Education	P13
1.5.2. Security	P13
2 .Economic issues	P14
2.1 Local economy	P14
2.1.1. Local contractors	P14
2.1.2. Local building material supply	P14
2.1.3. Outsource opportunities	P14
2.2 Efficiency of use	P14
2.2.1 Usable space	P14
2.2.2 Occupancy	P14
2.2.3 Space use	P14
2.2.4 Use of technology	P14
2.3 Adaptability and flexibility	P14
2.3.1. Vertical dimensions	P14

2.3.2.	Running costs	P15
2.3.3.	Maintenance	P15
2.3.4.	Internal partitions	P15
2.3.5.	Services	P15
2.3.6.	Cleaning	P15
2.3.7.	Insurance, water, energy	P15
2.3.8.	Disruption and “downtime”	P15
2.4	Capital costs	P15
2.4.1	Build ability	P15
2.4.2	Construction	P15
3	Environmental issues	P16
3.1	Water	P16
3.1.1	Rainwater and water use	P16
3.1.2	Run off	P16
3.1.3	Planting	P16
3.2	Energy	P16
3.2.1	Location	P16
3.2.2	Ventilation system	P16
3.2.3	Heating and cooling system	P17
3.2.4	Appliances and fittings	P17
3.2.5	Renewable energy	P17
3.3	Recycling and reuse	P17
3.3.1	Toxic wastes	P17
3.3.2	Inorganic waste	P17
3.3.3	Construction waste	P17
3.4	Site	P17
3.4.1	Brownfield site	P18
3.4.2	Neighboring buildings	P18
3.4.3	Vegetation	P18
3.4.4	Manufacturing process	P18
3.4.5	Recycled/ reused materials	P18

CHAPTER 3 DESIGN

1.	Activity and axis lines	P22
	Site plan layout	P23
2.	Theory for design	P24
2.1	introduction	P24
2.2	System thinking	P24
2.3	Air	P25
2.3.1	Wind induced	P26
	(a) Bernoulli-effect	P26
	(b) Venturi-effect	P26
2.3.2.	Stack induced	P26
2.4	Identity	P27
3.	Level thinking	P29
3.1.	2 nd floor under ground.	P29
3.2	.1 st floor under ground.	P30
3.3.	Ground floor.	P30
3.4.	Main entrance.	P31
3.5.	Commercial component.	P31
3.6.	Inter-active conference facility	P32
4.	Thermal performance	P33
4.1	North elevation	P34
4.2	West elevation	P35
	South elevation	P36

List of figures BRIEF

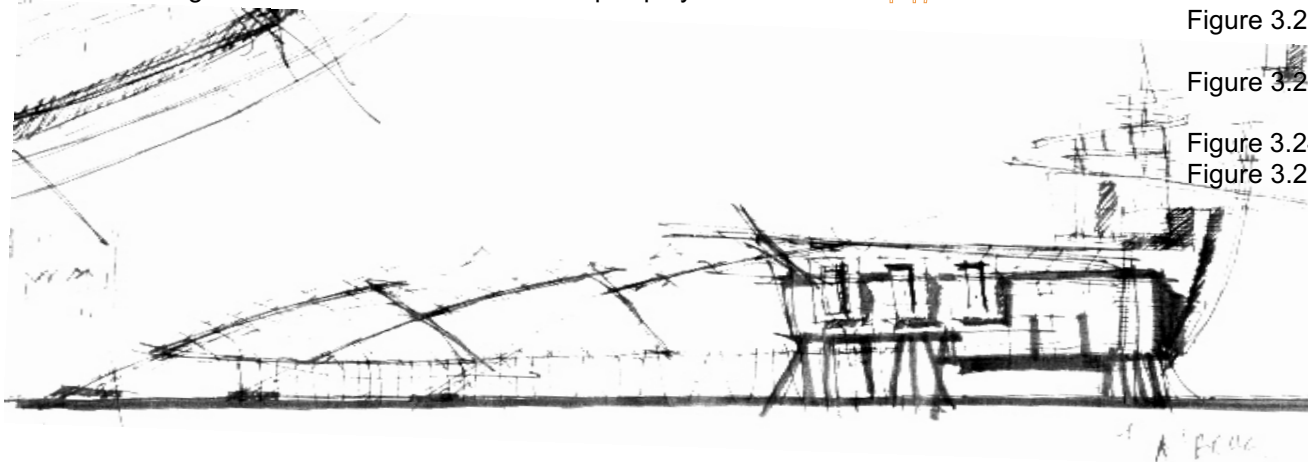
Figure 1.1. Proposed Gautrans rail line links.	P1
Figure 1.2. LG diagram of the site.	P1
Figure 1.3. Sun angle diagram and analysis.	P2
Figure 1.4. Photos of the old Arcadia school building	P3
Figure 1.5. Densification diagram towards the station	P6
Figure 1.6. Cross-section for a typical rail road	P8
Figure 1.7. Diagram illustrating the principles for the platform layouts.	P8

List of figures DESIGN

Figure 3.1. Site perspective illustrating axis and lines	P22
Figure 3.2. Perspective from south and west	P22
Figure 3.3a. Figure section sketch for Pedestrian Street	P22
Figure 3.3b. Perspective of Pedestrian Street.	P22
Figure 3.4. Section through Grosvenor Street.	P25
Figure 3.5. Diagram explaining shortest route	P25
Figure 3.6. Figure explaining wind directions.	P26
Figure 3.7. Figure illustrating the Bernoulli effect.	P26
Figure 3.8. Figure explaining the Venturi effect	P26
Figure 3.9. Perspective explaining internal air movement.	P27
Figure 3.10. Figures explaining the swivel panels & construction.	P27
Figure 3.11. Plan illustrating the interpolation of grids.	P28
Figures 3.12. Elevation design aspects.	P29
Figure 3.13. Section from north to south illustrating the 2 nd floor under ground.	P29
Figure 3.14. Layout plan of 2 nd floor under ground.	P30
Figure 3.15. Section from north to south illustrating the 1 st floor under ground.	P30
Figure 3.16. Layout plan of 1 st floor under ground.	P30
Figure 3.17. Section from north to south illustrating the ground floor.	P31
Figure 3.18. Ground floor spaces.	P31
Figure 3.19. Illustration of vertical ventilation and light penetration.	P31
Figure 3.20. Perspective view of main entrance.	P31
Figure 3.21. Section from east to west in perspective illustrating the commercial flank.	P32
Figure 3.22. Layout plan of commercial office space and perspective of structure.	P32
Figure 3.23. Section from east to west in perspective illustrating the inter-active flank.	P32
Figure 3.24. Layout plan of I-active flank.	P32
Figure 3.25. Perspective of modular panels and I-active structural components.	P33

List of figures BASELINE

Figure 2.1. Lighting and ventilation sections	P10
Figure 2.2. Plan explaining views and vertical circulation	P11
Figure 2.3. Plan illustrating the green areas	P11
Figure 2.4. Plan illustrating the public transport on site	P11
Figure 2.5. Toilet layout	P12
Figure 2.6. Perspective indicating the 1 st floor under ground.	P12
Figure 2.7. Perspective indicating the commercial level.	P13
Figure 2.8. Perspective illustrating minimum height levels.	P15
Figure 2.9. Section illustrating ventilation and cooling cycles.	P16
Figure 2.10. an illustration of a heat pump cycle.	P17



List of ANNEXURE

- 1). Density proposal for 100ha around station.
- 2). Governmental legislation.
- 3). Acts and policies relevant to the station.
- 4). Urban design framework.
- 5). Economic feasibility.
- 6). Risk analysis.

List of References

Integrated Station Functional area Guidelines, Draft 3. September 2002.

South African government.2001. Gautrans rapid rail link.

<http://www.trainconstructions.com>

CSIR Building and Construction Technology. 2000. Guidelines for Human Settlement, Planning and Design. CTP Book Printers. Cape Town.

National Land Transportation Transition Act. Act 22 of 2000

Gautrans Draft Document, 2002. Munitoria, Pretoria.

Environmentl Impact Assesment, Proposed Gautrans Rapid Rail Link.

LRT Design Criteria. October 2000 (revisewd).

Encyclopedia Britannica, 1982.

Bentley et al. 1985 Responsive Environments, The Architectural Press, London.

Dewar, D., and Uytendogaardt, RS. 1991. South African Cities: A Manifesto for Change, Cape Town.

Trancik, R. 1986. Finding Lost Space, Van Nostrand Reinhold Company Inc., New York.

Holm, D. 1983. Energy Conservation in Hot Dry Climates.

Greeno, J. 1998. Building Services, Technology and Design.

Gibbert, J. 2002.Sustainable Building Assessment Tool.

Capra, F. 1996. The Web of Life.

West, A.W. 2000. An Exploration of the Natural Ventilation Strategies at the World Trade Center in Amsterdam.