



**University of Pretoria**  
*Department of Economics Working Paper Series*

**The Long-Run Relationship between Inflation and Real Stock Prices:  
Empirical Evidence from South Africa**

Riona Arjoon

University of Pretoria

Mariette Botes

University of Pretoria

Laban K. Chesang

University of Pretoria

Rangan Gupta

University of Pretoria

Working Paper: 2010-28

December 2010

---

Department of Economics  
University of Pretoria  
0002, Pretoria  
South Africa  
Tel: +27 12 420 4125

# The long-run relationship between inflation and real stock prices: Empirical evidence from South Africa<sup>#</sup>

Riona Arjoon<sup>\*</sup>, Mariëtte Botes<sup>\*\*</sup>, Laban K. Chesang<sup>\*\*\*</sup> and Rangan Gupta<sup>\*\*\*\*</sup>

## Abstract

The existing literature on the theoretical relationship between the rate of inflation and real stock prices in an economy has shown varied predictions about the long run effects of inflation on real stock prices. In this paper, we present some time series evidence on this issue using South African data, by applying the structural bivariate vector autoregressive (VAR) methodology proposed by King and Watson (1997). Our empirical results provide considerable support of the view that, in the long run real stock prices are invariant to permanent changes in the rate of inflation. The impulse responses reveal a positive real stock price response to a permanent inflation shock in the long run, indicating that any deviations in short run real stock prices will be corrected towards the long run value. It is therefore concluded that inflation does not lower the real value of stocks in South Africa, at least in the long run.

**Keywords:** *Inflation; Real stock prices; Vector autoregressive (VAR) model*

**JEL Classification:** C32; E31; G12

---

<sup>#</sup> We would like to thank Professor Mehmet Balcilar for many helpful comments. . However, any errors are solely ours.

<sup>\*</sup> Graduate student, University of Pretoria, Department of Economics, Pretoria 0002 South Africa. Phone: +27(073) 317 3302, Email: riona.arjoon@gmail.com.

<sup>\*\*</sup> Graduate student, University of Pretoria, Department of Economics, Pretoria 0002 South Africa. Phone: +27(082) 513 1777, Email: mariette.botes@gmail.com.

<sup>\*\*\*</sup> Graduate student, University of Pretoria, Department of Economics, Pretoria 0002 South Africa. Phone: +27(072) 750 3903, Email: claban\_2010@yahoo.com.

<sup>\*\*\*\*</sup> Corresponding author, Professor, University of Pretoria, Department of Economics, Pretoria 0002, South Africa. Phone: +27(012) 420 3460, Email: Rangan.Gupta@up.ac.za.

# 1. Introduction

Traditional macroeconomic theory (assuming monetary super-neutrality) suggests that the real value of equity investments should not be affected by changes in the inflation rate. This stems from the reasoning that nominal variables should have no influence on the long-run values of real variables. This implies that, in times of inflation, investors sell financial assets in favour of equity, as stocks represent a claim on the real assets of a firm and this value should not be affected by changes in the price level. In other words, the return on assets should adjust to fully account for the inflation effect (Fisher, 1930)<sup>1</sup>.

A number of reasons have been offered to explain why an inverse relationship between inflation and stock prices is observed, contrary to the hypothesis put forward by Fisher (1930). The first is the *inflation illusion hypothesis* by Modigliani and Cohn (1979), which argues that participants in the stock market are unable to correctly calculate the long-term future growth rates of cash flows. At high inflation rates, the nominal interest rate is generally quite high, which causes an upward bias on the discount rate investors actually use for discounting. When expected returns are discounted using these higher rates, the result is a lower stock price level. The theory was developed in an attempt to explain the depressed stock prices in the US market in the 1960's and 1970's.

Evidence of inflation illusion has been documented by Ritter and Warr (2002), Campbell and Vuolteenaho (2004) and (Hong and Lee n.d.). Campbell and Vuolteenaho (2004) use a decomposition approach to estimate a residual mispricing component due to inflation based on US data. However, Rapach (2002), who used the King and Watson (1997) methodology of testing long run neutrality find little evidence of inflation illusion in stock market prices in a study of 16 industrialized countries. In a more recent study employing a dynamic general equilibrium with no inflation illusion involved, Wei (2010)

---

<sup>1</sup> The Fisher hypothesis suggests a one-on-one relationship between inflation and stock prices, implying that in a competitive market, common stocks are a hedge against inflation.

finds that technology shock moves both inflation and stock returns in the same direction, resulting in a positive link between the two variables.

The second explanation is the *real after-tax hypothesis* offered by Feldstein (1980). The hypothesis argues that the tax treatment of depreciation costs and capital gains results in the decrease in stock prices during inflationary periods. Thus, corporate profits and inflation are inversely related because of higher effective tax rates arising from higher inflation. Marshall (1992) tests this hypothesis using inflation and asset returns in a monetary endowment economy and confirmed that it could be valid. The author observes that the inverse relationship will be less pronounced during periods when inflation is generated by monetary fluctuations. Quayes and Jamal (2008) also provide support for this hypothesis by showing that inflation results in a proportionate increase in the nominal value of stocks. However, due to the prevailing tax laws, stock prices will decline in real terms.

The third explanation is the *proxy hypothesis* due to Fama (1981) who attributes the negative relationship between inflation and stock prices to the change in expected economic growth that accompanies an increase in inflation rate. This hypothesis was tested and extended to include the effects of monetization of government deficits by Geske & Roll (1983). To formalize and derive testable implications of this hypothesis Gallagher and Taylor (2002) develop a theoretical model which decomposes inflation into a component due to supply shocks and a component due to demand shocks. They show stock prices to be significantly and negatively correlated with inflation via supply shocks (rather than demand shocks). Their findings support the *proxy hypothesis* since the component of inflation that is due to supply shocks act as a proxy for expected future movements in real activity in the economy.

Another possible link is the *risk-premium hypothesis* suggested by Devereux and Yetman (2002) and Anari and Kolari (2010). They maintain that nominal discount rates can have

a negative impact on the value of stocks in the short run because of inflation premium that is included in the discounted rate. Closely related to this is the *time-varying risk-aversion hypothesis*, which argues that inflation changes the risk-averseness of investors and drives up the equity premium, and therefore the real discount rate (Brandt and Wang, 2003).

Among the studies that focus on African stock market is the study by Alagidede and Panagiotidis (2010)<sup>2</sup>, which employs parametric and nonparametric cointegration procedures to test for evidence of a positive long run relationship between stock prices and inflation. They show that the response of stock prices to a shock in consumer prices reveals an initial negative response in Egypt and South Africa, but then turns positive in the long run. For Nigeria, Kenya and Tunisia, the real stock price response to innovations in the consumer price index is invariant to the time horizon.

Although numerous studies have been conducted on the long run relationship between inflation and real stock prices, relatively little empirical evidence exists on long run superneutrality proposition in the South African stock market. The South African case is particularly interesting because the macroeconomic environment has been unstable over the past two decades due to political regime shifts, making long-run effects of any one shock difficult to observe. These instabilities led to an extreme weakening and increase in volatility of the currency, which in turn contributed to a reversal in the downward movement of long-term interest rates and yields (Mboweni 2000). The uncertainties in the foreign exchange market also spilled over to the stock market, with the Johannesburg Stock Exchange seeing significant movements in prices. For example, in 2000 it increased to a record high in January, fell to a 7-month low in April, and increased by 14% again by May of the same year. Furthermore, the country has adopted inflation

---

<sup>2</sup> The countries sampled for study by Alagidede and Panagiotidis (2010) are: Egypt, Kenya, Morocco, Nigeria, South Africa and Tunisia.

targeting, and it would be interesting to investigate the long run response of real stock prices under this economic circumstance.

In this paper, we apply the structural bivariate vector autoregressive (VAR) methodology proposed by King and Watson (1997), which pays particular attention to the integration and cointegration properties of the variables. Robustness checks suggested by King and Watson (1997) and also implemented by Rapach (2002) are applied in this paper by generating measures of the long run real stock price response to a permanent inflation shock for a range of assumed identifying parameter values.

Section 2 outlines the econometric framework, with particular focus on the time series properties of inflation and real stock prices, and the identification of the structural shocks. Empirical results are presented and discussed in Section 3. Section 4 concludes.

## **2. Data and Econometric Methodology**

### ***2.1. Data description***

The data used in this paper consists of quarterly observations of the nominal stock price index and consumer price index (CPI) for South Africa. It begins from 1980:1 and ends in 2010:2. The inflation rate series is computed by taking the first difference of the natural logarithm of the consumer price index, whereas the real stock price series is calculated as the natural logarithm of the nominal share price index deflated by the CPI.

### ***2.2. Integration and cointegration properties of the data***

Following King and Watson (1997) methodology, we evaluate a possible long run relationship between inflation and real stock prices using time series data for South Africa. In order to apply this methodology in estimating the long run response of real stock prices to a permanent inflation shock, it is critical to ascertain the time series properties of the two variables. Specifically, in order to have a meaningful long run

relationship between inflation and real stock prices, it is required that the two variables be integrated of order one (or I(1) in the terminology of Engle and Granger, 1987) but not cointegrated (CI(1,1)).

Essentially our interest is to determine whether permanent changes in the rate of inflation have any effect on the real stock price. This requires that both inflation rate and the real stock price are subject to permanent, or at least for practical purposes, very persistent shocks (Crosby and Otto, 2000). If for instance, inflation is I(1) but real stock price is I(0) then permanent changes in the rate of inflation cannot (by definition) affect the real stock prices in the long run. In what follows, we perform unit root tests for inflation rate and real stock price series (based on two alternative testing procedures) and cointegration tests between the series.

**Table 1: Unit root test results**

<u>Levels</u>				<u>First differences</u>			
ADF <sub>μ</sub> <sup>a</sup>	ADF <sub>τ</sub> <sup>b</sup>	KPSS <sub>μ</sub> <sup>c</sup>	KPSS <sub>τ</sub> <sup>d</sup>	ADF <sub>μ</sub> <sup>a</sup>	ADF <sub>τ</sub> <sup>b</sup>	KPSS <sub>μ</sub> <sup>c</sup>	KPSS <sub>τ</sub> <sup>d</sup>
Inflation rate				Inflation rate			
-1.684	-4.072*	1.731*	0.143	-7.194*	-7.162*	0.030	0.026
Real stock prices				Real stock prices			
-2.345	-3.190	0.940*	0.369*	-7.848*	-7.965*	0.122	0.029

\* indicates significance at the 5% level

<sup>a</sup> test allows for a constant; one sided (lower tail) test for the null hypothesis that the variable has unit root; 5% critical value equals -2.88

<sup>b</sup> test allows for a constant and a linear trend; one sided (lower tail) test for the null hypothesis that the variable has unit root; 5% critical value equals -3.44

<sup>c</sup> test allows for a constant; one sided (lower tail) test for the null hypothesis that the variable is stationary; 5% critical value equals 0.463

<sup>d</sup> test allows for a constant and a linear trend; one sided (lower tail) test for the null hypothesis that the variable is stationary; 5% critical value equals 0.146 (notice that the KPSS<sub>τ</sub><sup>d</sup> statistic for inflation rate is significant at the 10% level).

Table 1 presents the results obtained from two standard unit root tests: the augmented Dickey-Fuller (ADF; Dickey and Fuller 1979) and the KPSS (Kwiatkowski et al. 1992). The ADF tests the null of unit root whereas the KPSS tests the null of stationarity. In

these tests, we consider inflation and real stock prices in levels and in first differences. In the ADF test, the test regression includes a constant ( $ADF_{\mu}^a$ ) and a constant and a linear trend ( $ADF_{\tau}^b$ ). The results indicate that neither ADF tests reject the nonstationarity null hypothesis for inflation rate at the 5% level of significance. Similarly, at the 5% level of significance we cannot reject the null hypothesis of a unit root in levels for real stock prices. However, the ADF tests reject the nonstationarity null hypothesis for both inflation and real stock prices in first differences.

In table 1, we also report KPSS test results when we allow for a constant ( $KPSS_{\mu}^c$ ) and a constant and a linear trend ( $KPSS_{\tau}^d$ ). Stationarity serves as the null hypothesis. By testing both the unit root hypothesis and the stationarity hypothesis, one can distinguish series that appear to be stationary, series that appear to be integrated, and series that are not very informative about whether or not they are stationary or have a unit root (Kousta and Serletis, 1999). The test results indicate that the null hypothesis of stationarity is rejected at 5% level for inflation and real stock prices in levels, but cannot be rejected for each variable in first differences. Combining the ADF and KPSS test results, we conclude that each variable (inflation and real stock prices) is integrated of order one (I(1)).

The King and Watson (1997) methodology relies on a bivariate vector autoregressive (VAR) model in first differences that is derived from a vector moving average process. The invertibility of this process requires that the endogenous variables in the VAR should not be integrated. In fact, long run neutrality tests are inefficient in the presence of cointegration (Fisher and Seater, 1993). If for instance inflation and real stock price are nonstationary but are cointegrated, then a finite VAR process in first differences does not exist for the variables. To present an empirical evidence of this issue using our data, we first test for cointegration between inflation and real stock prices using the augmented Engle and Granger (1987, AEG) two-step procedure, whereby non-cointegration is the null hypothesis. We assume a constant in the cointegration regression, and use the Akaike Information Criterion (AIC) to determine the number of augmenting lags in the test. The



results are reported in table 2 where inflation and real stock prices serve in turn as the dependent variable in the first step OLS regression. In both cases, the test results suggest that the null hypothesis of non-cointegration is not rejected at the 5% level.

**Table 2: Cointegration test results**

AEG statistic <sup>a</sup>		C <sub>μ</sub> statistic <sup>b</sup>	
<u>Dependent variable</u>		<u>Dependent variable</u>	
Inflation	real stock prices	inflation	real stock prices
-1.978	-2.249	1.038*	0.441*

\* indicates significance at the 5% level

<sup>a</sup> one sided (lower-tail) test of the null hypothesis that inflation and real stock prices are not cointegrated; 5% critical value equals -3.34

<sup>b</sup> one sided (upper-tail) test of the null hypothesis that inflation and real stock prices are cointegrated; 5% critical value equals 0.314

Table 2 also reports cointegration test results between inflation and real stock prices based on the Shin (1994) two-step procedure, where cointegration serves as the null hypothesis. As in the AEG (1987) two-step procedure, we report C<sub>μ</sub> statistics from Shin (1994) by assuming a constant in the cointegration regression, and we use inflation and real stock prices in turn as the dependent variable in the first step. The test results based on the C<sub>μ</sub> statistics do confirm those inferred based on the AEG statistics, that inflation and real stock prices are indeed non-cointegrated. Overall, we can reasonably consider inflation and real stock prices as integrated of order one (I(1)) but not cointegrated for South Africa. This means that the conditions necessary for meaningful examination of the long run neutrality tests hold.

### ***2.3. Econometric framework***

We define  $\pi_t$  and  $s_t$  to be, respectively, inflation rate and natural logarithm of real stock prices at time  $t$ . Following the methodology developed by King and Watson (1997) and adopted by Rapach (2002), we specify the following bivariate vector autoregressive

(VAR) model of order  $p$  in  $\pi_t$  and  $s_t$  expressed in first difference form (in which case  $\pi_t$  and  $s_t$  are I(1) but not cointegrated).

$$\Delta \pi_t = \lambda_{\pi s} \Delta S_t + \sum_{j=1}^p \alpha_{\pi s}^j \Delta S_{t-j} + \sum_{j=1}^p \alpha_{\pi \pi}^j \Delta \pi_{t-j} + \varepsilon_t^\pi \dots\dots\dots(1)$$

$$\Delta S_t = \lambda_{s\pi} \Delta \pi_t + \sum_{j=1}^p \alpha_{ss}^j \Delta S_{t-j} + \sum_{j=1}^p \alpha_{s\pi}^j \Delta \pi_{t-j} + \varepsilon_t^s \dots\dots\dots(2)$$

Equations (1) and (2) are a set of dynamic simultaneous equations in which:  $\varepsilon_t^\pi$  and  $\varepsilon_t^s$  represent exogenous unexpected changes in inflation and real stock prices respectively, that can have permanent effect on the levels of the endogenous variables  $\pi_t$  and  $s_t$ ; respectively,  $\lambda_{\pi s}$  and  $\lambda_{s\pi}$  represent contemporaneous response of  $\pi_t$  to changes in  $s_t$  and the contemporaneous response of  $s_t$  to changes in  $\pi_t$  respectively. Our main focus is on the dynamic effect of the inflation shock,  $\varepsilon_t^\pi$  on  $s_t$ .

Representing the above system in matrix format yields;

$$\alpha(L)X_t = \varepsilon_t$$

in which,

$$\alpha(L) = \sum_{j=0}^p \alpha_j L^j \quad X_t = \begin{bmatrix} \Delta \pi_t \\ \Delta s_t \end{bmatrix} \quad \varepsilon_t = \begin{bmatrix} \varepsilon_t^\pi \\ \varepsilon_t^s \end{bmatrix}$$

$$\alpha_0 = \begin{bmatrix} 1 & -\lambda_{\pi s} \\ -\lambda_{s\pi} & 1 \end{bmatrix} \quad \alpha_j = - \begin{bmatrix} \alpha_{\pi\pi}^j & \alpha_{\pi s}^j \\ \alpha_{s\pi}^j & \alpha_{ss}^j \end{bmatrix} \quad j = 1, 2, \dots, p$$

where we define

$$\alpha_{\pi\pi} = 1 - \sum_{j=1}^p \alpha_{\pi\pi}^j L^j; \quad \alpha_{\pi s}(L) = \lambda_{\pi s} + \sum_{j=1}^p \alpha_{\pi s}^j L^j; \quad \alpha_{ss} = 1 - \sum_{j=1}^p \alpha_{ss}^j L^j$$

and  $\alpha_{s\pi} = \lambda_{s\pi} + \sum_{j=1}^p \alpha_{s\pi}^j L^j$ .

By letting  $\varepsilon_t = (\varepsilon_t^\pi, \varepsilon_t^s)'$  we define  $E(\varepsilon_t, \varepsilon_t') = \sum_e$ , the variance-covariance matrix for the structural shocks. In the above notations, we can find expressions in terms of long run multipliers of the response of inflation and real stock prices to these structural shocks. These are  $\gamma_{s\pi} = \alpha_{s\pi}(1)/\alpha_{ss}(1)$  and  $\gamma_{\pi s} = \alpha_{\pi s}(1)/\alpha_{\pi\pi}(1)$  where  $\gamma_{s\pi}$  measures the long run response of real stock prices,  $s_t$  to a permanent unit increase in inflation,  $\pi_t$ , while  $\gamma_{\pi s}$  measures the long run response of  $\pi_t$  to a permanent unit increase in  $s_t$ .

Endogeneity of  $s_t$  and  $\pi_t$  makes the system of equations (1) and (2) unidentified and therefore we cannot obtain consistent estimates of  $\gamma_{s\pi}$ , the long run real stock price response to a permanent inflation shock. We identify three identifying schemes that use a pair of restrictions. Expressions (1) and (2) place 1's on the diagonal of  $\alpha_0$  but only three of the remaining parameters  $\text{var}(\varepsilon_t^\pi)$ ,  $\text{var}(\varepsilon_t^s)$ ,  $\text{cov}(\varepsilon_t^\pi, \varepsilon_t^s)$ ,  $\lambda_{\pi s}$  and  $\lambda_{s\pi}$  are identifiable. The  $\sum_e$  is diagonal is the first restriction used each of the three identifying schemes. We also follow the standard practice in structural VAR modeling and assume that the structural shocks are contemporaneously uncorrelated, that is,  $\text{cov}(\varepsilon_t^\pi, \varepsilon_t^s) = 0$ . This assumption places no restriction on the contemporaneous correlation between  $s$  and  $\pi$ , as long as  $\lambda_{\pi s}$  and  $\lambda_{s\pi}$  are allowed to be non-zero. By following Rapach (2002), we next discuss the importance of the three identifying schemes in the interpretation of the results;

- a) The first identifying scheme assumes that  $\sum_e$  is diagonal and  $\lambda_{\pi s}$  is known. The assumption restricts the contemporaneous response of  $\pi$  to a permanent real stock price shock. Standard theory suggests that in the short run, inflation should respond negatively to a permanent real stock price shock implying that  $\lambda_{\pi s}$  is negative in most cases. This is because a permanent real stock price shock can be perceived as a productivity shock that permanently increases real output and hence expected earnings

- b) In the second identification scheme,  $\sum_e$  is diagonal and  $\lambda_{s\pi}$  is known, implying that we restrict the contemporaneous real stock price response to a permanent inflation shock. A permanent inflation shock, say, due to an accommodative monetary policy by the Reserve Bank, reduces the real interest rate, thereby increasing real output and real earnings in the short run<sup>3</sup>. Thus, in the short run  $\lambda_{s\pi}$  is expected to be positive if a short run liquidity effect prevails.
- c) The third identifying scheme assumes that  $\sum_e$  is diagonal and  $\gamma_{\pi}$  is known. This restricts the Reserve Bank's long run response to a permanent real stock price shock. If the Reserve Bank increases the target inflation rate in response to a productivity shock, then  $\gamma_{\pi}$  is expected to be positive; it is expected to be negative if the Bank's response to the shock is by lowering the target inflation rate.

With the above identifying assumptions, we have consistent estimates of the parameters of equations (1) and (2), from which we can generate  $\gamma_{s\pi}$  estimates. The results are discussed in the next section. In order to check for robustness and plausibility of the estimates of the long run neutrality inferences made, we generate  $\gamma_{s\pi}$  estimates for different values of  $\lambda_{\pi}$ ,  $\lambda_{s\pi}$  and  $\gamma_{\pi}$ .

### 3. Empirical findings

Panels A, B and C of figure 1 present point estimates of  $\gamma_{s\pi}$  based on the first identification scheme, second identification scheme and third identification scheme respectively. The dashed lines delineate 95% confidence bands.

---

<sup>3</sup> based on the standard present value equity valuation model, falling interest rate and rising real earnings leads to an increase in real stock prices.

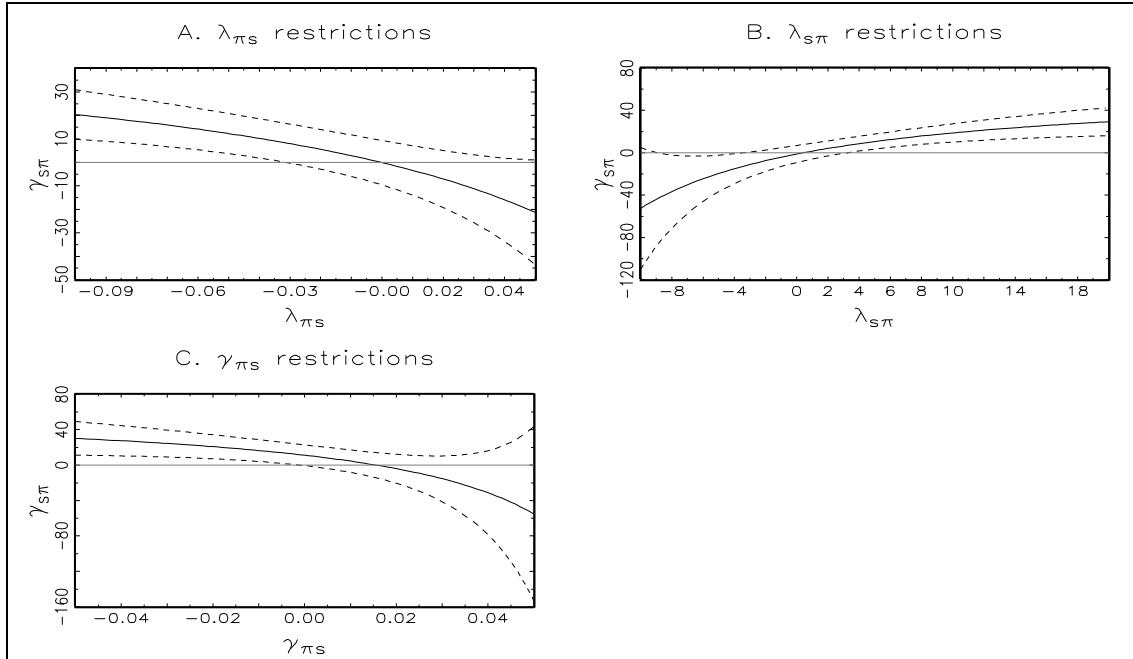


Figure 1:  $\gamma_{s\pi}$  estimates for different assumed  $\lambda_{\pi s}$  values

### 3.1. First Identification Scheme

Panel A of figure 1 depicts  $\gamma_{s\pi}$  point estimate as decreasing for the assumed values of  $\lambda_{\pi s}$ .  $\lambda_{\pi s}$  values that are approximately less than zero produce  $\gamma_{s\pi}$  estimates that are significantly positive. For instance, for the value  $\lambda_{\pi s} = -0.05$ , we have a corresponding significant  $\gamma_{s\pi}$  value of approximately 12. This suggests that inflation decreases contemporaneously by 0.5 percentage points for each 10% increase in real stock prices, whereas the  $\gamma_{s\pi}$  of 12 implies that long run real stock prices increases by 12 percentage for each percentage point increase in inflation resulting from a permanent inflation shock. Since theory suggests that  $\lambda_{\pi s}$  is likely to be negative, the range of  $\lambda_{\pi s}$  values between -0.10 and -0.00 seem quantitatively plausible for South Africa. This implies that only  $\lambda_{\pi s}$  values that are very close (or equal) to zero produce point estimates that are not significantly different from zero. These are the values that correspond to long run inflation neutrality with respect to real stock prices. The  $\gamma_{s\pi}$  values that correspond to the

range of positive values of  $\lambda_{\pi s}$  are significantly negative. But, given that theory suggests  $\lambda_{\pi s}$  to be negative, the positive  $\gamma_{s\pi}$  estimates are unreasonable at least according to theory.

In figure 2 we present the impulse responses of inflation and real stock price for three different assumed  $\lambda_{\pi s}$  identifying values (-0.05, 0, 0.05). These values do not produce significant differences in inflation response to a permanent inflation shock or in real stock price response to a permanent real stock price shock. However there are notable differences in inflation response to a permanent real stock price shock and in real stock price response to a permanent inflation shock for these assumed values of  $\lambda_{\pi s}$ .

Earlier in figure 2 it was noted that the value of  $\lambda_{\pi s} = -0.05$  yields positive and significant  $\gamma_{s\pi}$  point estimate. From the impulse responses (in figure 3) it is observed that, for  $\lambda_{\pi s} = -0.05$ , a permanent inflation shock produces a short run increase in real stock prices, and a permanent real stock price shock produces a noticeable short run decrease in inflation.

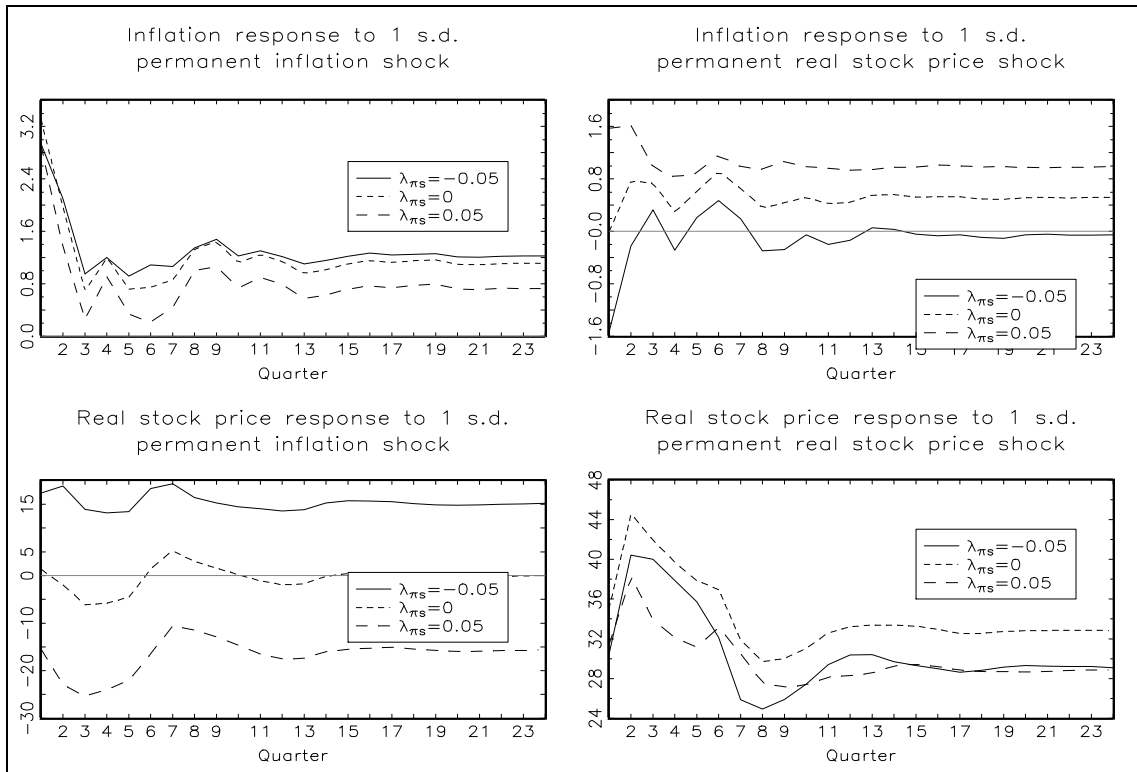


Figure 2: Inflation and real stock price impulse responses for different assumed  $\lambda_{\pi s}$  values

For  $\lambda_{\pi s} = 0$  (which generates a  $\gamma_{s\pi}$  estimate that is not significantly different from zero) the short run inflation response to a permanent real stock price shock is positive, whereas the short run real stock price response to a permanent inflation shock is negative. These results are theoretically implausible. When  $\lambda_{\pi s} = 0.05$  (positive  $\lambda_{\pi s}$  values yield  $\gamma_{s\pi}$  estimates that are significantly negative) it is observed that, the short run response of real stock prices to a permanent inflation shock is negative, whereas the short run response of inflation to a permanent real stock price shock is positive. These findings do not correspond to theoretical expectations. Overall, on the basis of the first identification scheme, it is observed that  $\lambda_{\pi s}$  values that are associated with positive  $\gamma_{s\pi}$  point estimates are theoretically plausible.

### 3.2. *Second Identification Scheme*

Panel B of figure 1 reports point estimates of  $\gamma_{s\pi}$  based on the second identification scheme. It is observed that positive assumed  $\lambda_{s\pi}$  values produce significantly positive  $\gamma_{s\pi}$  point estimates, whereas negative assumed  $\lambda_{s\pi}$  values yield significantly negative  $\gamma_{s\pi}$  point estimates. Values of  $\lambda_{s\pi}$  that are close to zero yield  $\gamma_{s\pi}$  point estimates are not significantly different from zero. A value of  $\lambda_{s\pi} = 8$  for instance, corresponds to a  $\gamma_{s\pi}$  value of approximately 16. It suggests that real stock prices increase contemporaneously by 8 percent for each percentage point increase in inflation. The  $\gamma_{s\pi}$  value of 16 implies that the long run real stock prices increase by 16 percent for each point increase in inflation resulting from a permanent inflation shock. It can therefore be concluded that, positive values of  $\lambda_{s\pi}$  (which yield positive  $\gamma_{s\pi}$  point estimates) are theoretically plausible and this is consistent with liquidity effect, where a permanent inflation shock lowers the real interest rate, and this increases both real output and real earnings in the short run. This in turn should increase real stock prices.

The corresponding impulse responses for three different assumed identifying values of  $\lambda_{s\pi}$  (-6, 1 and 8) are displayed in figure 3, and they confirm the above results. It is observed that positive values of  $\lambda_{s\pi}$  such as 1 and 8 for instance, yield significantly positive real stock price response to a permanent inflation shock, in line with theoretical expectations. The impulse response for  $\lambda_{s\pi} = 8$  far much exceeds those of  $\lambda_{s\pi} = 1$ . It is however observed that, whereas the inflation rate response to a permanent real stock price shock is primarily positive for  $\lambda_{s\pi} = 1$ , it is primarily negative for  $\lambda_{s\pi} = 8$ , implying that there is a limit of positive assumed  $\lambda_{s\pi}$  values for which inflation response to a permanent real stock price shock is positive.



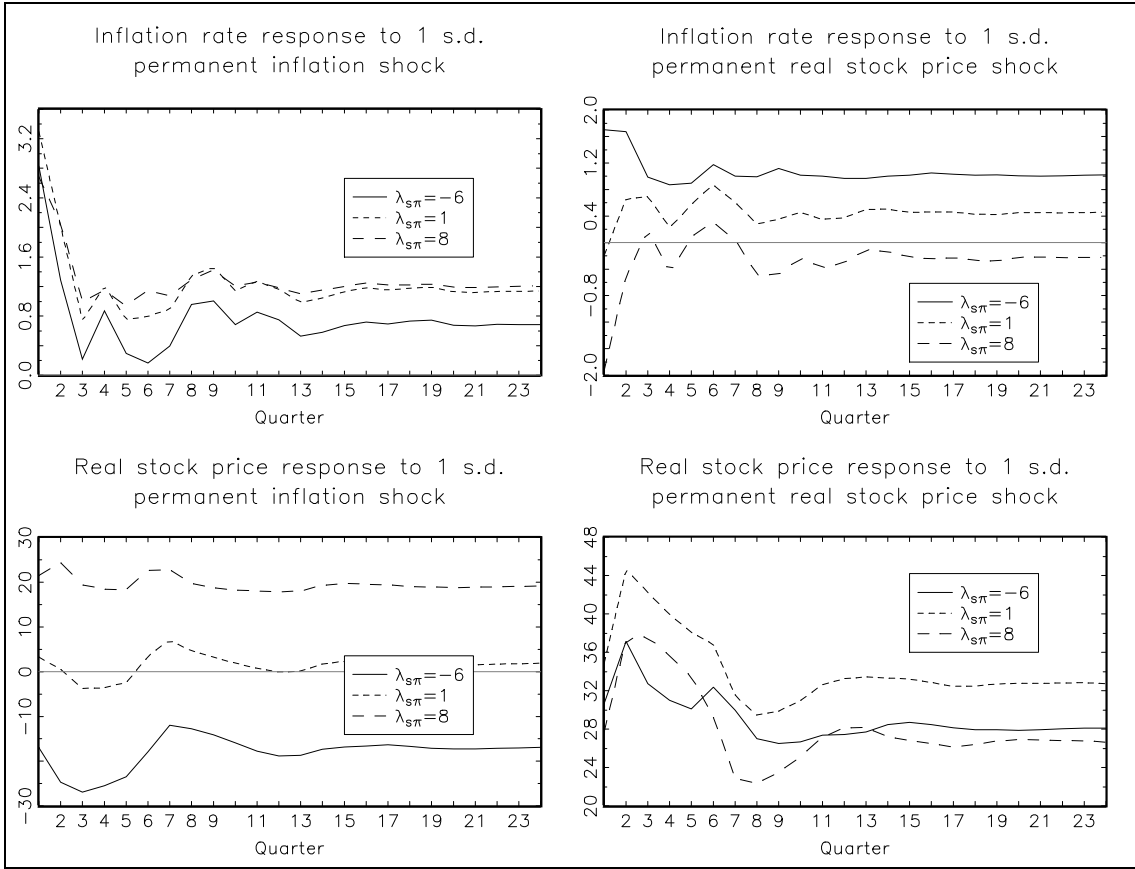


Figure 3: Inflation and real stock price impulse responses for different assumed  $\lambda_{s\pi}$  values

Finally, whereas negative assumed  $\lambda_{s\pi}$  values (such as  $\lambda_{s\pi} = -6$ ) yield primarily negative real stock price responses to a permanent inflation shock, they yield primarily positive inflation responses to a permanent real stock price shock.

### 3.3. Third Identification Scheme

Panel C of figure 1 reports  $\gamma_{s\pi}$  point estimates for different assumed  $\gamma_{\pi}$  identifying values based on the third identification scheme (that  $\sum_e$  is diagonal and  $\gamma_{\pi}$  is known). It depicts  $\gamma_{s\pi}$  point estimates to be decreasing for increasing  $\gamma_{\pi}$  values.  $\gamma_{\pi}$  values of

approximately less than 0.015 produce significantly positive  $\gamma_{s\pi}$  point estimates while those above it yield significantly negative  $\gamma_{s\pi}$  point estimates.

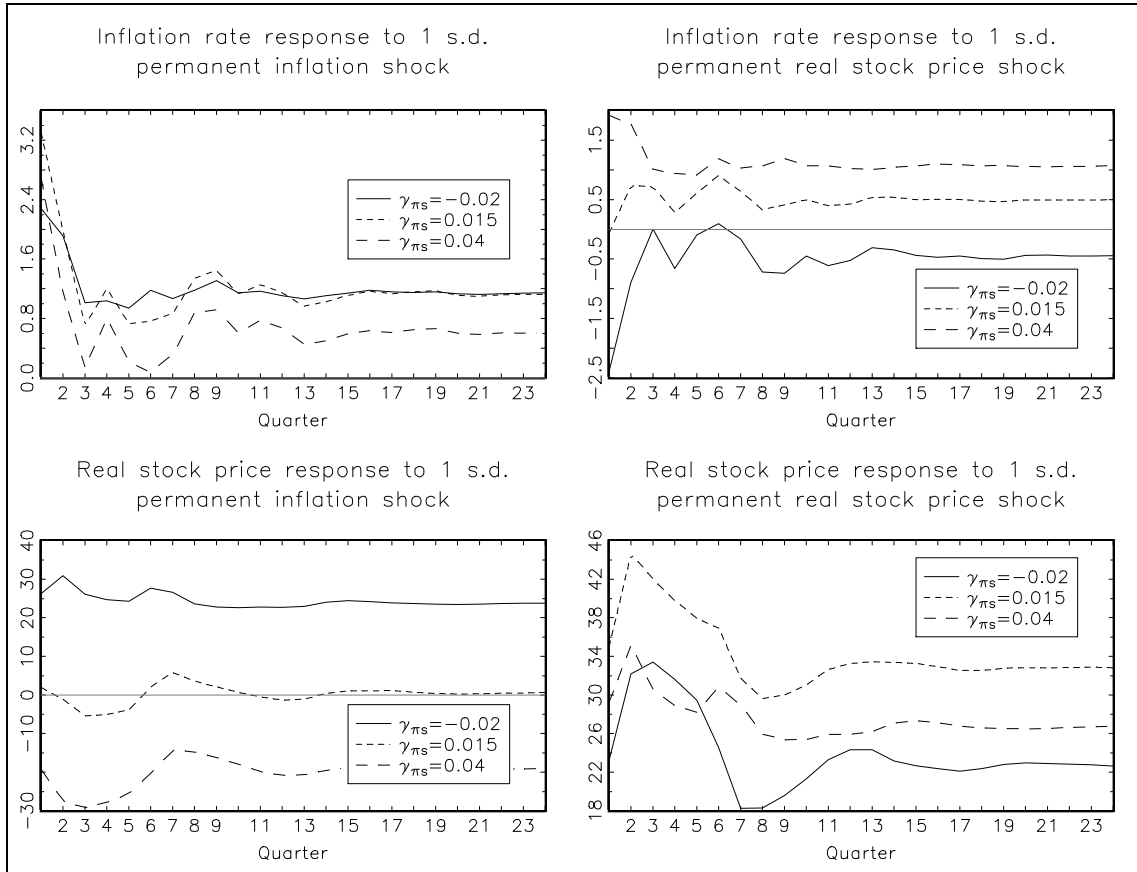


Figure 4: Inflation and real stock price impulse responses for different assumed  $\gamma_{\pi s}$  values

As noted earlier, theory is inconclusive on the expected sign of  $\gamma_{\pi s}$ . From the impulse responses reported in figure 4,  $\gamma_{\pi s}$  values above 0.015 are associated with a positive inflation response to a real stock price shock, reflecting higher target inflation rate by the Reserve Bank in response to a productivity shock. Rapach (2002) observes that an assumed value of  $\gamma_{\pi s}$  equal to zero corresponds to the “monetarist” assumption that permanent changes in inflation arise mainly from exogenous changes in money growth.

In that case  $\gamma_{s\pi}$  is reasonably equal to zero, a result that has been found for most countries.

#### **4. Conclusion**

The paper has examined the long run relationship between inflation and real stock prices in South Africa within the bivariate vector autoregressive (VAR) framework. Overall, we find considerable evidence in support of the view that, in the long run real stock prices are invariant to permanent changes in the rate of inflation. The impulse responses reveal a positive real stock price response to a permanent inflation shock in the long run, indicating that any deviations in short run real stock prices will be corrected towards the long run value. Therefore the long run estimates of the real stock price response to a permanent inflation shock that are zero or positive are theoretically plausible.

The impulse responses also provide support for a positive liquidity effect with respect to real stock prices, where a permanent inflation shock lowers the real interest rate. This then increases both real output and real earnings in the short run, which in turn raises real stock prices. Intuitively, these findings imply that investment in real stocks can provide a hedge against inflation in South Africa, at least in the long run. Our findings coincide with those from studies by Rapach (2002), Kim (2003) and Al-Khazali and Pyun (2004), Alagidede and Panagiotidis (2010) and Wei (2010). However we do not find considerable evidence in support of an inverse relationship between inflation and real stock prices as suggested by Modigliani and Cohn (1979), Feldstein (1980), Fama (1981), Devereux and Yetman (2002), Gallagher and Taylor (2002) and Anari and Kolari (2010).

## 5. References

Alagidede, P. and Panagiotidis, T. “Can common stocks provide a hedge against inflation? evidence from African countries”. *Review of Financial Economics* 19 (2010):91–100.

Al-Khazali, O.M., and C.S. Pyun. “Stock Prices and Inflation: New Evidence from the Pacific-Basin Countries.” *Review of Quantitative Finance and Accounting* 22 (2004): 123-140.

Anari, A., and J. Kolari. “Stock Prices and Inflation.” *The Journal of Financial Research* 24, no. 4 (2001): 587-602.

—. *The Power of Profit, Business and Economic Analyses, Forecasting and Stock Evaluation*. New York: Springer-Verlag, 2010.

Brandt, M.W., and K.Q. Wang. “Time-varying risk aversion and unexpected inflation.” *Journal of Monetary Economics* 50 (2003): 1457-1498.

Campbell, John Y., and Tuomo Vuolteenaho. “Inflation Illusion and Stock Prices.” *NBER Working Paper* (National Bureau of Economic Research), no. 10263 (2004).

Cohen, R.B., C. Polk, and T. Vuolteenaho. “Money Illusion in the Stock Market: The Modigliani-Cohn Hypothesis.” *NBER Working Paper Series* (National Bureau of Economic Research), no. 11018 (January 2005).

Contrarian Investors' Journal. *Can stocks hedge you from price inflation?* 2010. <http://cij.inspiring.com/?tag=price-inflation> (accessed 10 18, 2010).

Crosby, M., and G Otto. “Inflation and Capital Stock.” *Journal of Money, Credit and Banking* 32, no. 2 (2000): 236-253.

Devereux, M.B., and J. Yetman. "Menu Costs and the Long-Run Output-Inflation Trade-off." *Economic Letters* 76 (2002): 95-100.

Dickey, D.A., and W.A. Fuller. "Distribution of the estimators for autoregressive time series with a unit root." *Journal of the American Statistical Association* 76, no. 366 (1979): 427-431.

Engel, R., and W. Granger. "Co-integration and error correction representation, estimation and testing." *Econometrica* 55 (1987): 251-276.

Fama, E. "Stock Returns, Real Activity, Inflation and Money." *American Economic Review* 71 (1981): 545-565.

Feldstein, M. "Inflation and the Stock Market." *American Economic Review* 70, no. 5 (1980): 839-847.

Fisher, Irving. *The Theory of Interest*. New York: Macmillan, 1930.

Fisher, M.E., and J.J. Seater. "Long-run Neutrality and Superneutrality in an ARIMA Framework." *American Economic Review* 83, no. 3 (1993): 402-415.

Gallagher, L.A., and M.P. Taylor. "The Stock Return-Inflation Puzzle Revisited." *Economic Letters* 75 (2002): 147-156.

Gay, Robert D. "Effect of Macroeconomic Variables on Stock Market Returns for Four Emerging Economies: Brazil, Russia, India and China." *International Business and Economics Research Journal* 7, no. 3 (March 2008).

Geske, R., and R. Roll. "The Fiscal and Monetary Linkages Between Stock Returns and Inflation." *Journal of Finance* 38, no. 1 (1983): 49-65.

Hong, Gwangheon, and Bong-Soo Lee. "Are Mispricing in Asset Prices due to Inflation Illusion?"

Kim, J.R. "The Stock Return-Inflation Puzzle and the Asymmetric Causality in Stock Returns, Inflation and Real Activity." *Economic Letters* 80 (2003): 155-160.

King, R.G., and M.W. Watson. "Testing long-run neutrality." *Federal Reserve Bank of Richmond Economic Quarterly* 83, no. 3 (1997): 69-101.

Kousta, Z., Serletis, A. "On the Fisher effect." *Journal of Monetary Economics* 44, no. 1 (1999): 105-130.

Kwiatkowski, D., O. Phillips, P. Schmidt, and Y. Shin. "Testing the Null Hypothesis of Stationarity Against the Alternative of a Unit Root." *Journal of Econometrics* 54 (1992): 159-78.

Marshall, D.A. "Inflation and Asset Returns in a Monetary Economy." *Journal of Finance* 47, no. 4 (1992): 1315-1342.

Mboweni, Tito T. "Recent Developments in South Africa's Financial Markets." *Address at the Beeld/Investec Guinness Flight Economist of the Year Banquet*. Johannesburg, 12 May 2000.

Mitchell-Innes, H.A., M.J. Aziakpono, and A.P. Faure. "Inflation Targeting and the Fisher Effect in South Africa: An Empirical Investigation." *South African Journal of Economics* 75, no. 4 (December 2007): 693-707.

Modigliani, F., and R.A. Cohn. "Inflation, Rational valuation and the Market." *Financial Analysis Journal*, 1979: 24-44.

Murphy, A., and A. Sahu. "Empirical Evidence of a Positive Inflation Premium Being Incorporated into Stock Prices." *Atlantic Economic Journal* 29, no. 2 (June 2001): 177-185.

Quayes, S. and Jamal, A. "Does inflation affect stock prices?" *Applied Economics Letters*, no. 15(2008):767-769

Rapach, David E. "The long-run relationship between inflation and real stock prices." *Journal of Macroeconomics*, no. 24 (2002): 331-351.

Ritter, Jay R., and Richard S. Warr. "The decline of inflation and the bull market of 1982-1999." *Journal of Financial and Quantitative Analysis* 37 (2002): 29-61.

Saryal, Fatma Sonmez. "Does Inflation Have an Impact on Conditional Stock Market Volatility? Evidence From Turkey and Canada." *International Research Journal of Finance and Economics*, 2007: 123-133.

Shin, Y. "A residual-based test of the null of cointegration against the alternative of no integration." *Econometric Theory* 10, no. 1 (1994): 91-115.

Stock Market Investors. *Effects of Inflation on Your Investment Portfolio*. 2009. <http://www.stock-market-investors.com/stock-investment-risk/effects-of-inflation-on-your-investment-portfolio.html> (accessed 10 17, 2010).

Wei, C. "Inflation and Stock Prices: No Illusion." *Journal of Money, Credit and Banking* 42, no. 2 (2010):325-345

Yeh, C.C., and C.F. Chi. "The co-movement and long-run relationship between inflation and stock returns: Evidence from 12 OECD countries." *Journal of Economics and Management* 5, no. 2 (2009): 167-186.