

Tree scale: 0.001

Colored ranges

- A
- C1
- C2

Country

- Chad
- China
- Egypt
- India
- Kenya
- Mozambique
- Netherlands
- Nigeria
- Senegal
- South Africa
- South Korea
- Sudan
- Uganda
- Ukraine
- United Kingdom
- United State of America
- Unknown
- Zimbabwe

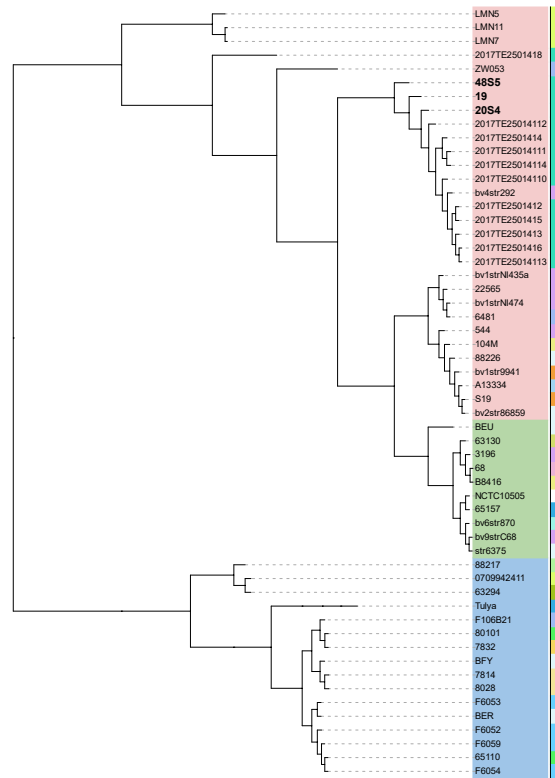


Fig. S1. Phylogram of the *B. abortus* strains based 56 strains clustered according to average nucleotide identity (ANI) showing the clustering.