

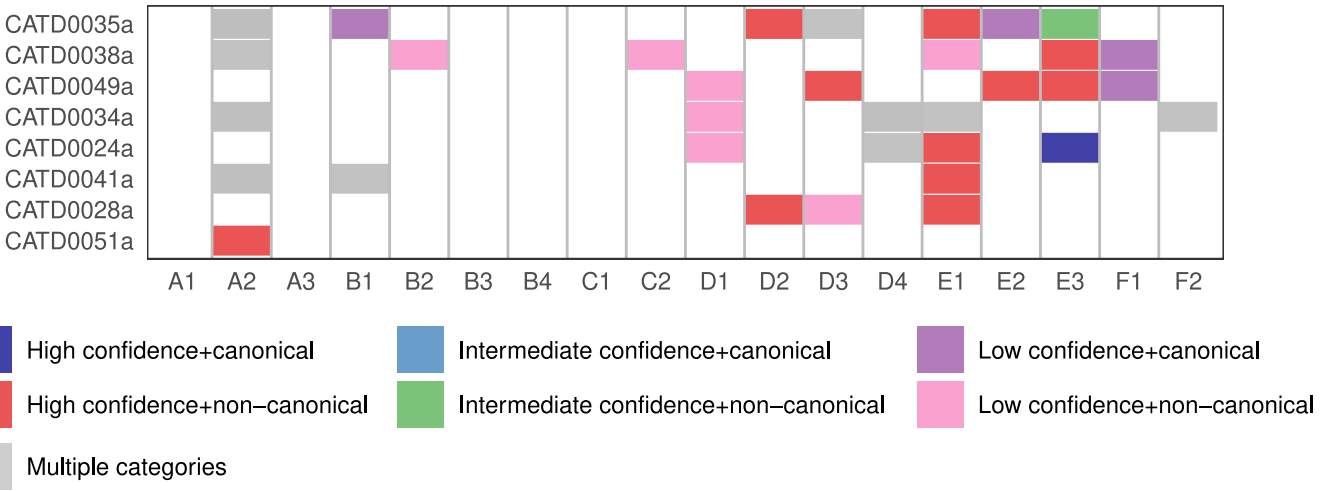
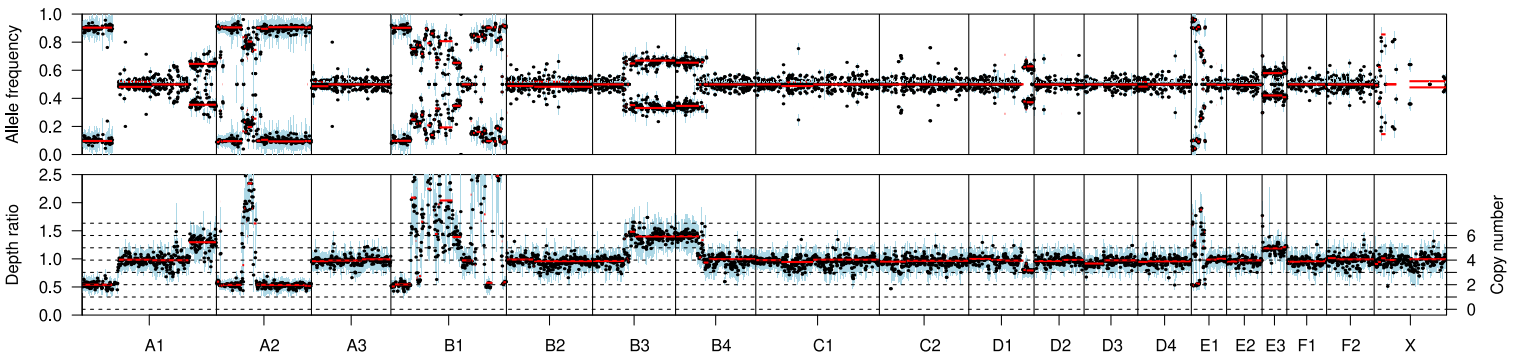
a**b**

Fig. S14. Chromothripsis-like events in feline urinary bladder UC. **a**, Chromosomes with one or more chromothripsis-like events of high, intermediate and low confidence identified in 8 samples. **b**, Genome plot for CATD0041a, showing B-allele frequencies and depth ratios derived from sequencing data, with chromothripsis-like events on chromosomes A2, B1 and E1.