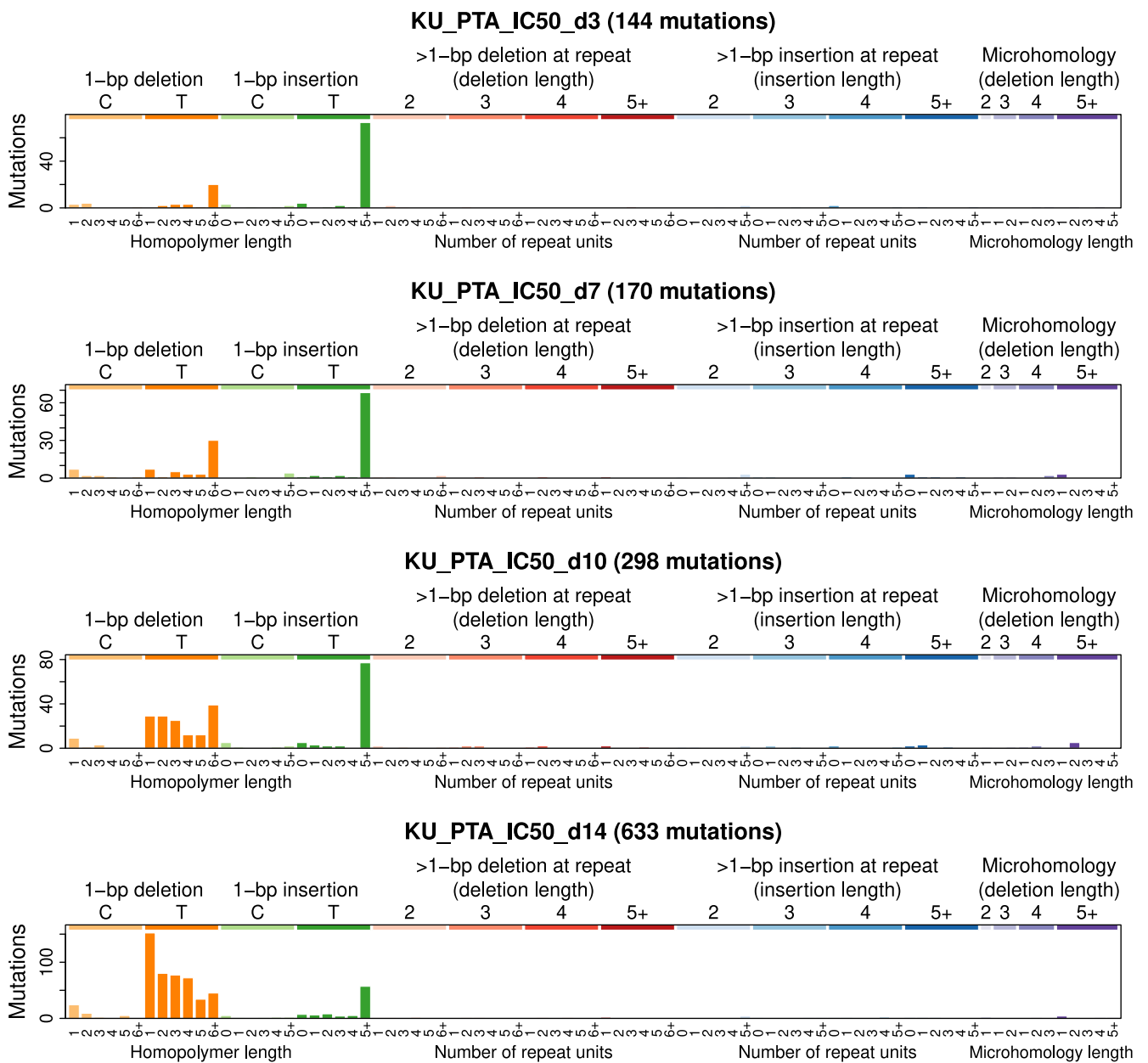
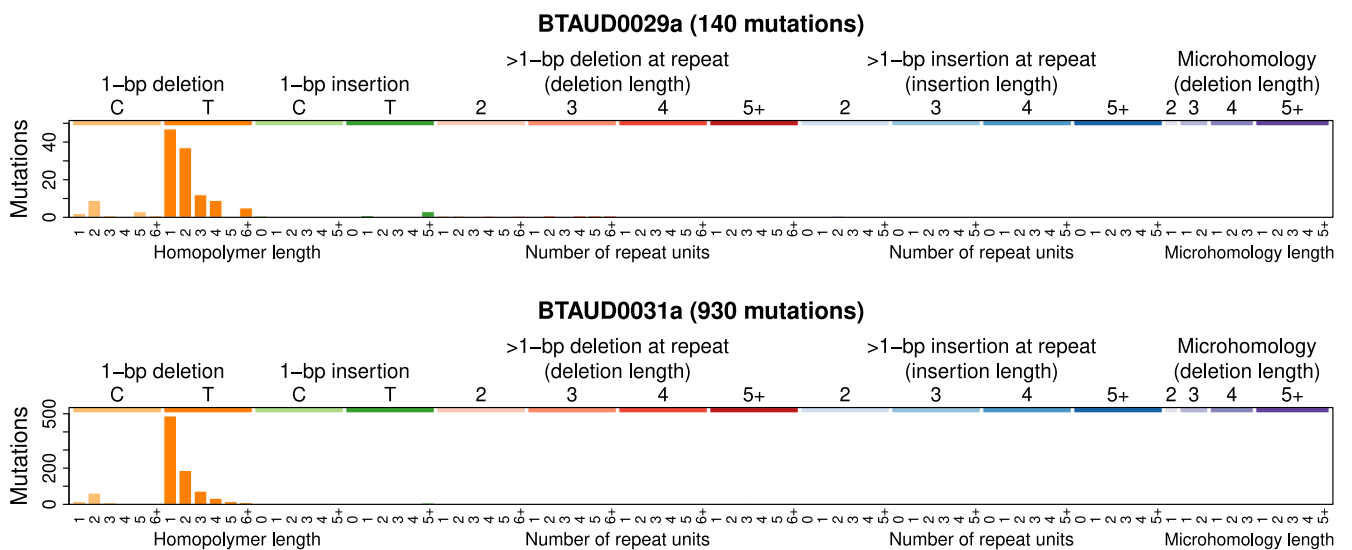


a



b



**Fig. S11. The indel mutation spectra from ptaquiloside-treated human bladder UC cells and bovine urinary bladder UC.** **a**, Indel mutation spectra of ptaquiloside-treated KU-19-19 cells (IC<sub>50</sub>), at different time points; d3, d7, d10 and d14 are the number of days. **b**, The indel mutation spectra of bovine UC cases with the lowest (upper panel) and highest (lower panel) number of indels.