

Figure 1 Symptomatic *Cymbidium* plant (A) aerial, (B) root, (C) pseudobulb; (D) Colony morphologies of *Phytophthora multivesiculata* (CMW58027) on three solid microbial media; Morphology of *P. multivesiculata* (CMW58027) (E-G) zoosporangia, (H-I) oogonia with amphigynous antheridia, (J) vesicles (indicated with white arrows); Pathogenicity trials using (K) leaf (Cymbidiums) (L) whole plant (*Ansellia africana*) inoculation approaches. Bar = 10µm.

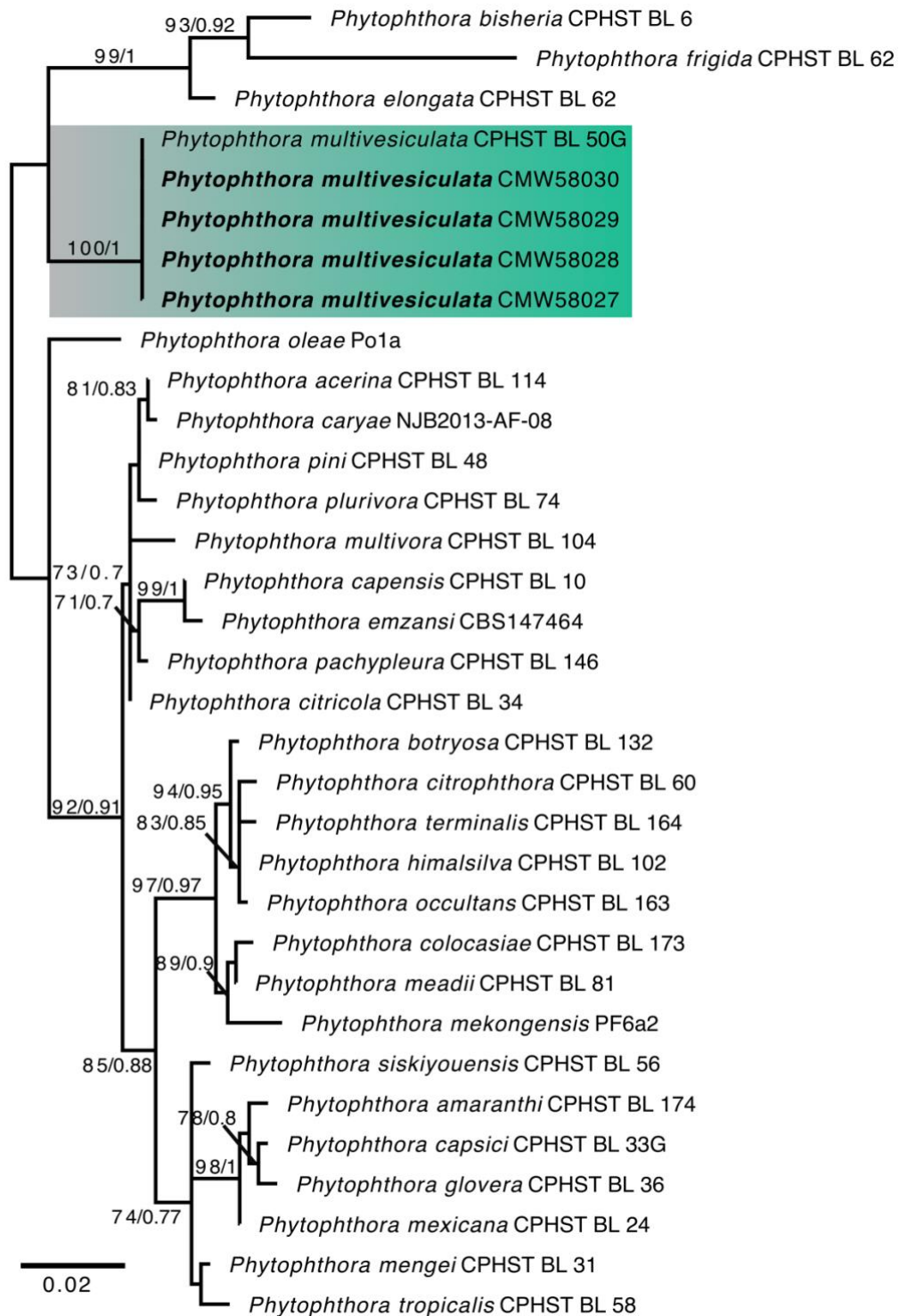


Figure 2 A maximum likelihood phylogenetic tree using the concatenated dataset (ITS+BT+COX1) for ITS Clade 2 *Phytophthora* species. The isolates of *Phytophthora multivesiculata* recovered in this study formed a monophyletic clade with the ex-type sequence of the same species. *Phytophthora cinnamomi* CPHST BL 12 was used as an outgroup taxon (not shown). Numbers on the branches are bootstrap values (≥ 70)/posterior probabilities (≥ 0.7).