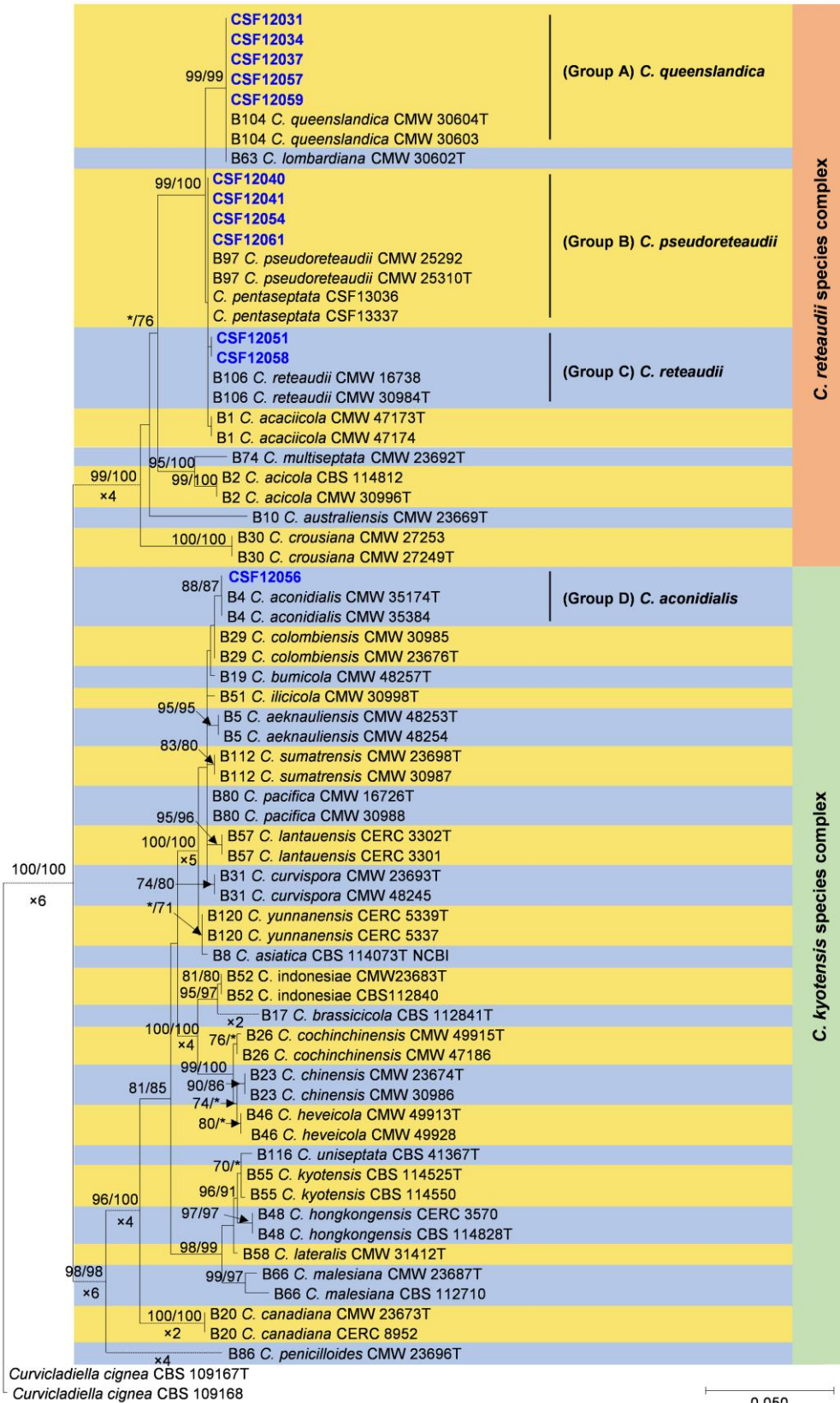


cmdA



Supplementary Fig. S3. Phylogenetic trees obtained from Maximum Likelihood (ML) analyses of *cmdA* region for species in the *C. reteauidii* and *C. kyotensis* species complexes. Bootstrap support values $\geq 70\%$ for ML and MP are indicated above the branches as ML/MP. Bootstrap support values $< 70\%$ are marked with “*”. Isolates obtained in this study are highlighted in blue and in bold type; “T” represents ex-type isolates. “B” species codes are consistent with the published results in Liu et al. (2020). *Curvuliella cigna* (CBS 109167 and CBS 109168) was used as the outgroup taxon.