

Fig S6: Total value of pome fruit production in South Africa from 2005 until 2018. Adapted from Hortgro (2020).

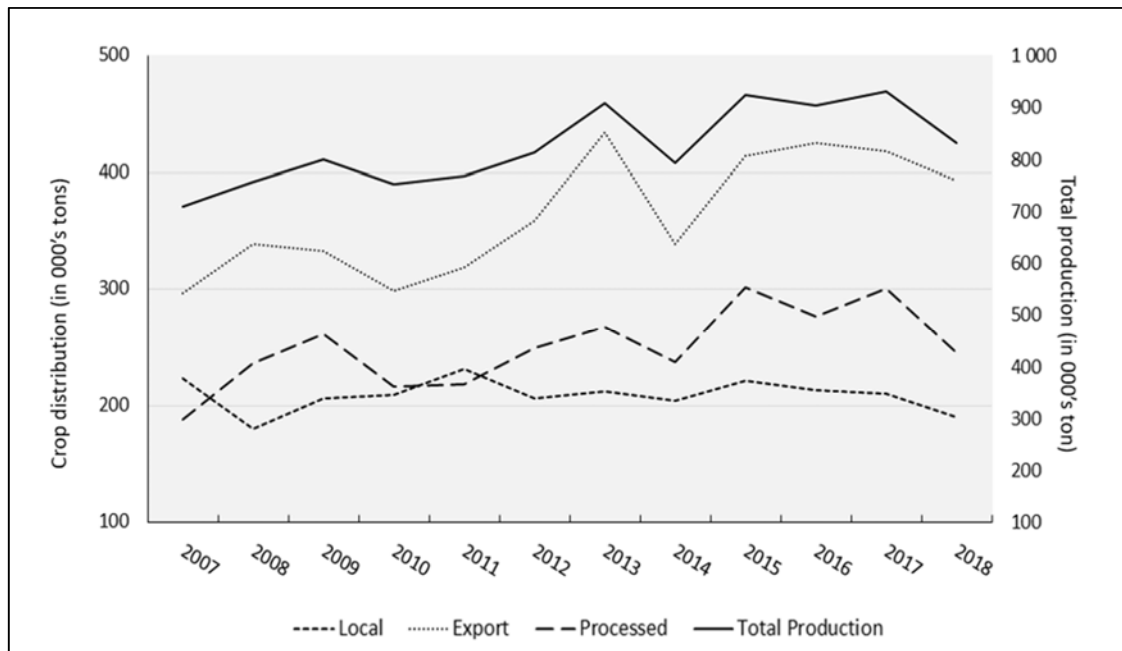


Fig. S7: Crop distribution in tons for apples in South Africa for 2007-2018. Total production is on the secondary Y-axis. Adapted from Hortgro (2020).

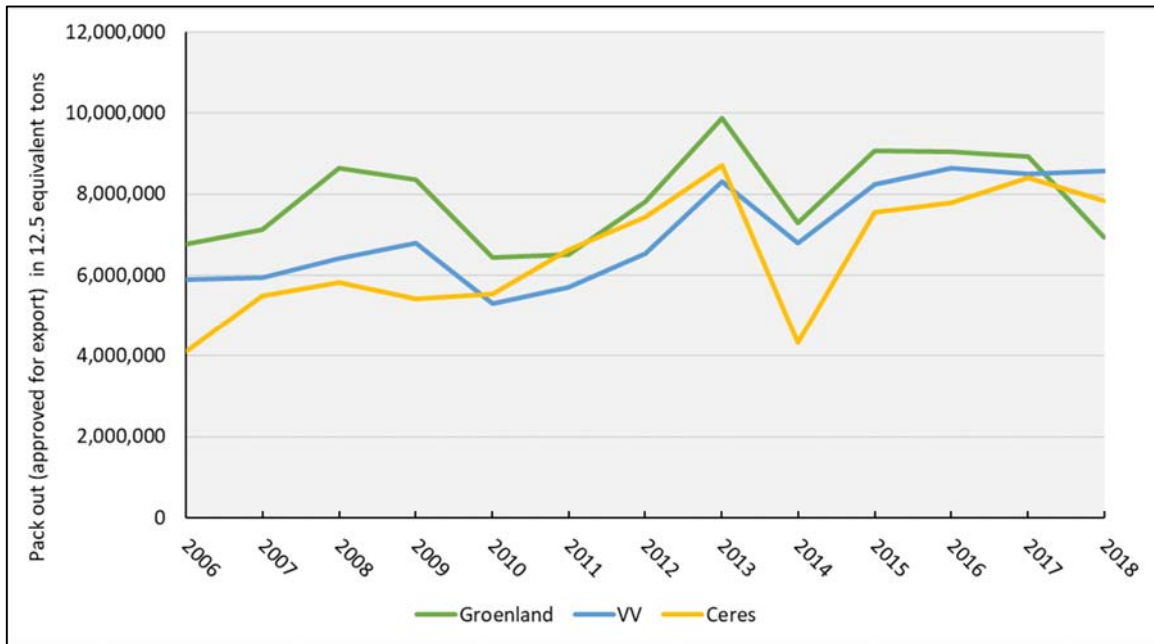


Fig. S8: Class 1 pack out (approved for export) in 12.5 equivalent tons from 2006 until 2018 for the Groenland (green), Vyeboom-Villiersdorp (VV) (blue) and Ceres (yellow) apple regions in the Western Cape, South Africa. Adapted from Hortgro (2020).