



Article

# Cytotoxic-Ag-Modified Eggshell Membrane Nanocomposites as Bactericides in Concrete Mortar

Samuel Tomi Aina <sup>1</sup>, Hilda Dinah Kyomuhimbo <sup>1</sup>, Barend Du Plessis <sup>1</sup>, Vuyo Mjimba <sup>2</sup>, Nils Haneklaus <sup>3</sup>  
and Hendrik Gideon Brink <sup>1,\*</sup>

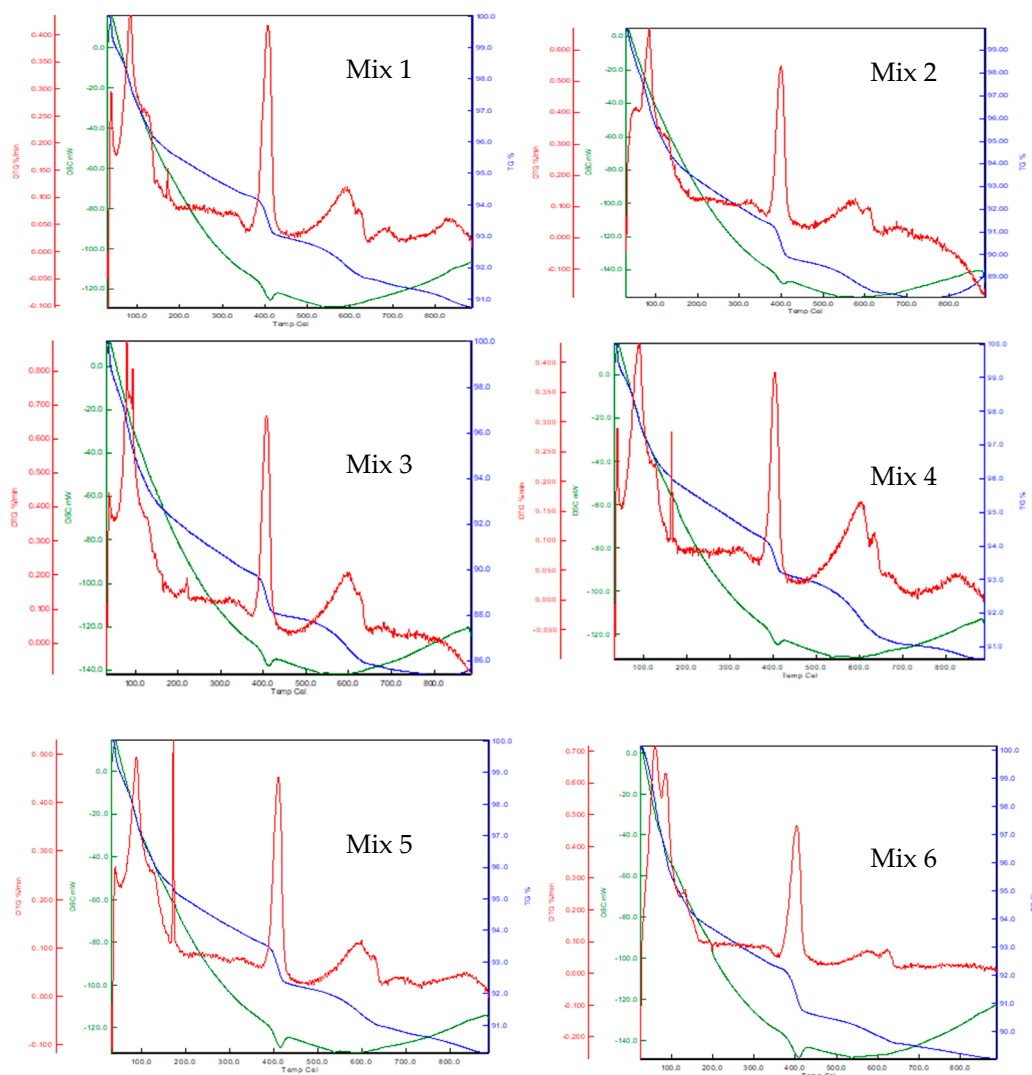
<sup>1</sup> Department of Chemical Engineering, University of Pretoria, South Africa; samuel.aina@tuks.co.za (S.T.A.); u21830658@tuks.co.za (H.D.K.); barend.duplessis@up.ac.za (B.D.P.)

<sup>2</sup> Human Sciences Research Council, Pretoria, South Africa; vmjimba@hsrc.ac.za

<sup>3</sup> Td Lab Sustainable Mineral Resources, University for Continuing Education Krems, Dr.-Karl-Dorrek-Straße 30, 3500 Krems, Austria; nils.haneklaus@donau-uni.ac.at

\* Correspondence: deon.brink@up.ac.za

## Supplementary Material



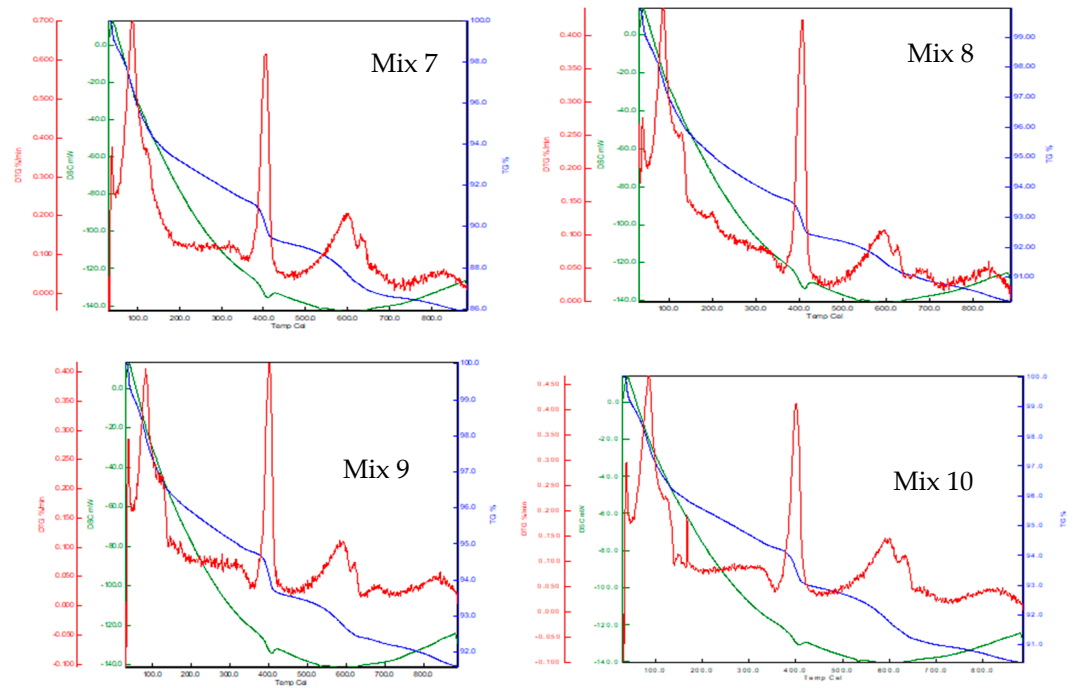
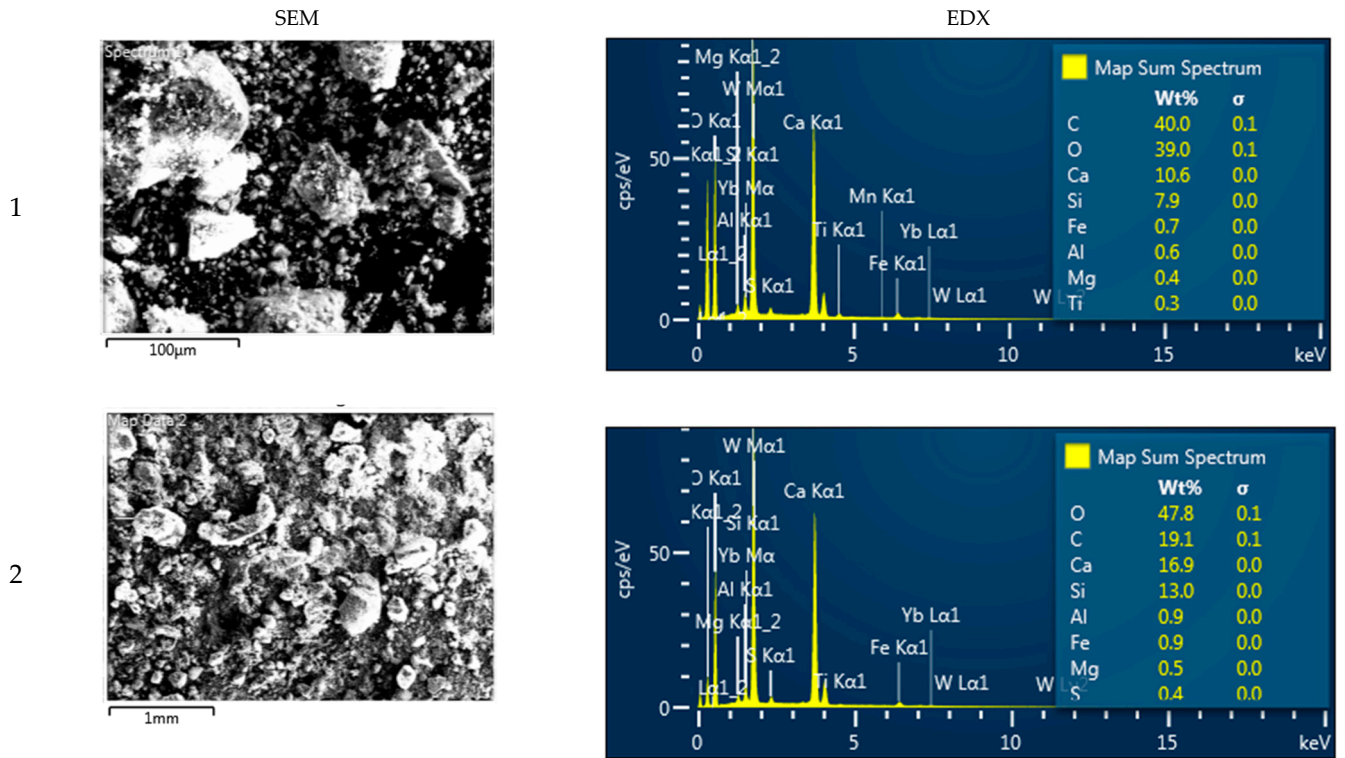
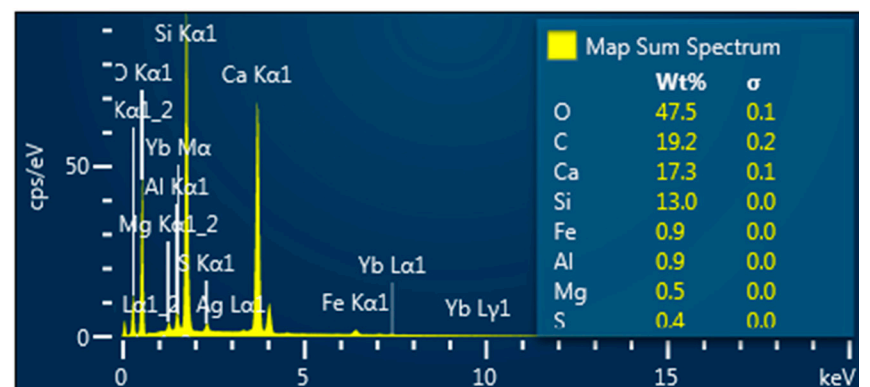
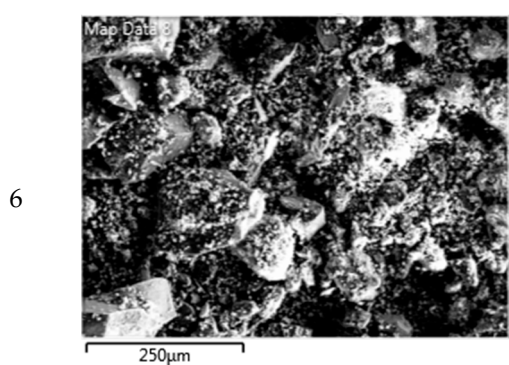
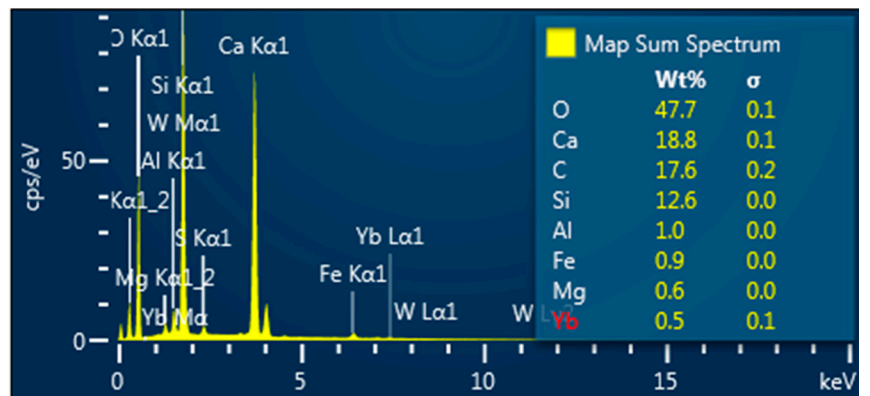
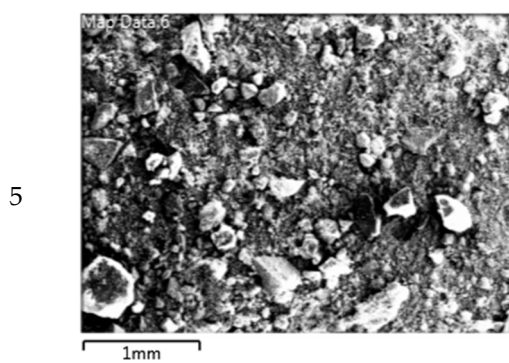
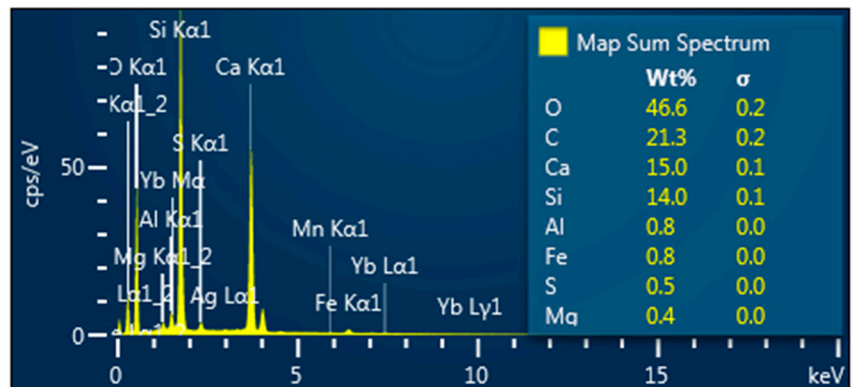
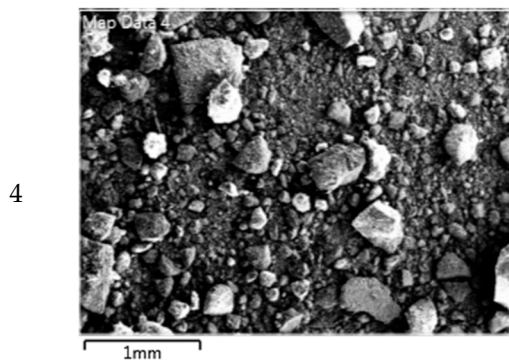
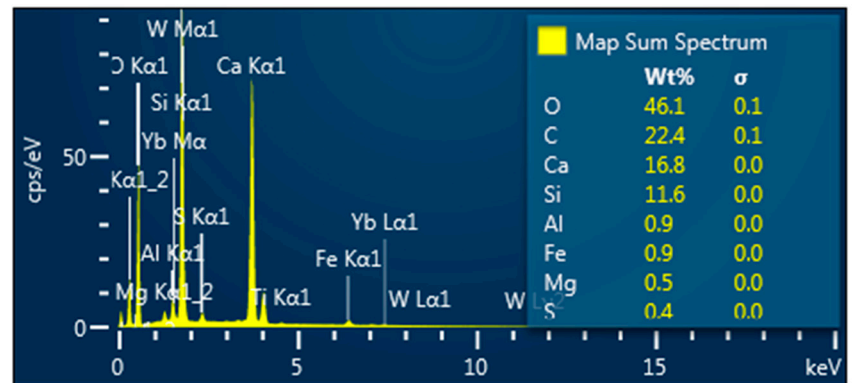
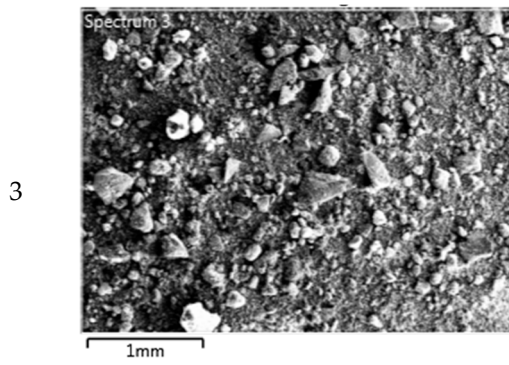


Figure S1. TG, DTG, and DSC analysis of concrete mixes. A to J for mix 1 to 10 respectively.









Mg	0.36	0.51	0.51	0.43	0.56	0.47	0.46	0.52	0.77	0.71
Al	0.62	0.94	0.91	0.82	0.99	0.85	0.88	0.99	1.45	1.35
Si	7.91	12.99	11.55	14	12.59	12.98	9.96	12.25	13.36	12.16
S	0.25	0.4	0.42	0.45	0.43	0.42	0.48	0.46	0.69	0.76
Ca	10.62	16.86	16.75	14.96	18.76	17.33	16.65	18.76	18.76	18.33
Ti	0.29	0.13	0.15	0	0	0	0	0	0	0.26
Mn	0.04	0	0	0.05	0	0	0	0	0.07	0.09
Fe	0.73	0.92	0.87	0.8	0.94	0.92	0.86	0.97	1.44	1.44
Yb	0.2	0.34	0.35	0.36	0.47	0.37	0.42	0.33	0.6	0.82
W	0	0	0	0	0	0	0	0	0	0
Ag	0	0	<b>0.06</b>	<b>0.2</b>	0	<b>0.05</b>	<b>0.3</b>	0	0	0
Total:	100	100	100	100	100	100	100	100	100	100

**Disclaimer/Publisher's Note:** The statements, opinions and data contained in all publications are solely those of the individual author(s) and contributor(s) and not of MDPI and/or the editor(s). MDPI and/or the editor(s) disclaim responsibility for any injury to people or property resulting from any ideas, methods, instructions or products referred to in the content.