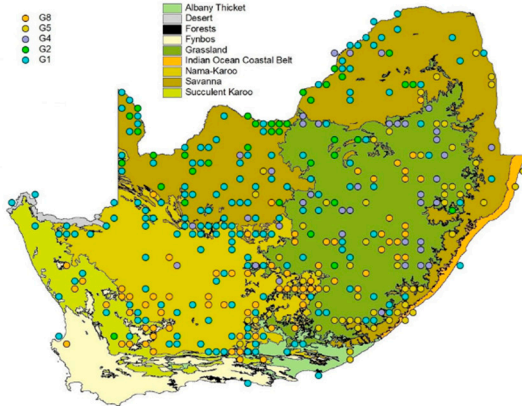


**Generalist**

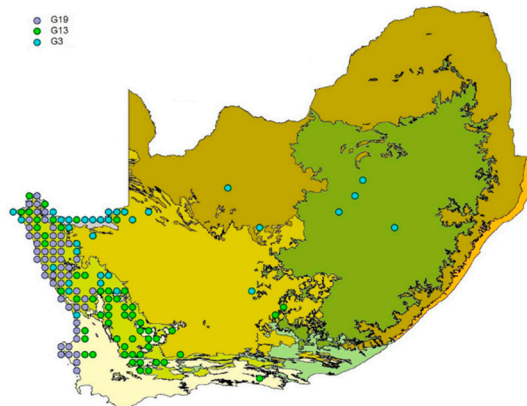
- G8
- G5
- G4
- G2
- G1

- Albany Thicket
- Desert
- Forests
- Fynbos
- Grassland
- Indian Ocean Coastal Belt
- Nama-Karoo
- Savanna
- Succulent Karoo



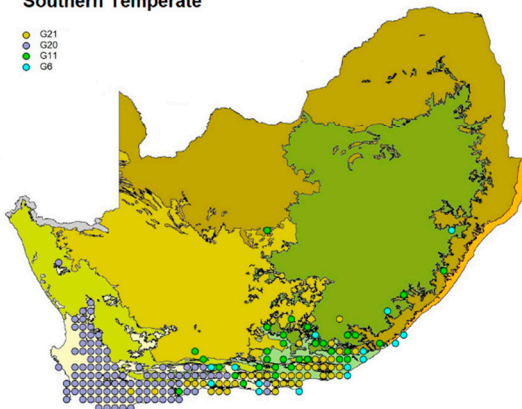
**Western Arid**

- G18
- G13
- G3



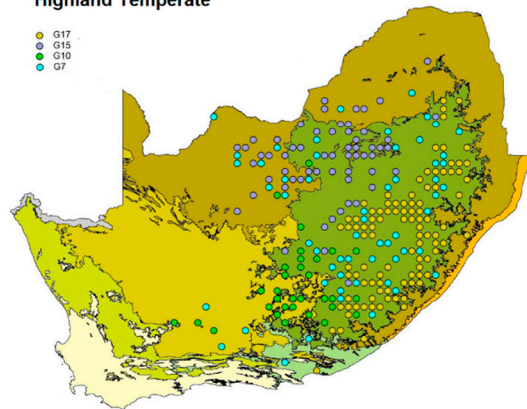
**Southern Temperate**

- G21
- G20
- G11
- G6



**Highland Temperate**

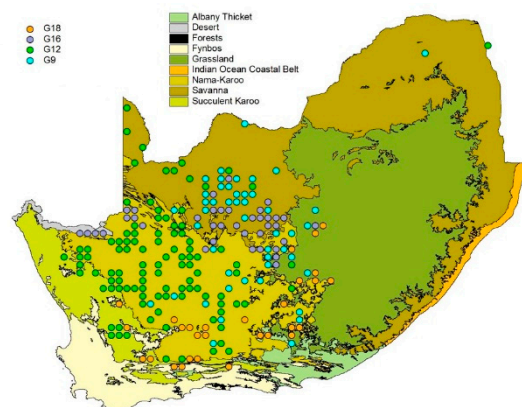
- G17
- G15
- G10
- G7



**Central Arid**

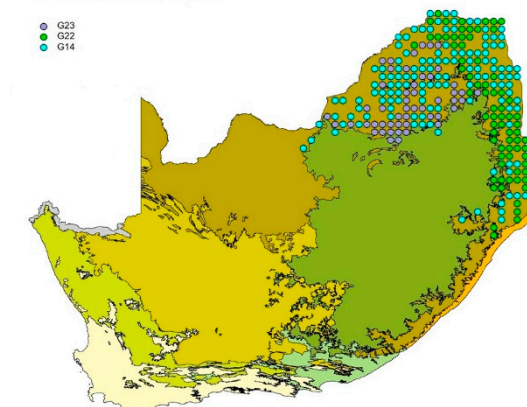
- G18
- G16
- G12
- G9

- Albany Thicket
- Desert
- Forests
- Fynbos
- Grassland
- Indian Ocean Coastal Belt
- Nama-Karoo
- Savanna
- Succulent Karoo



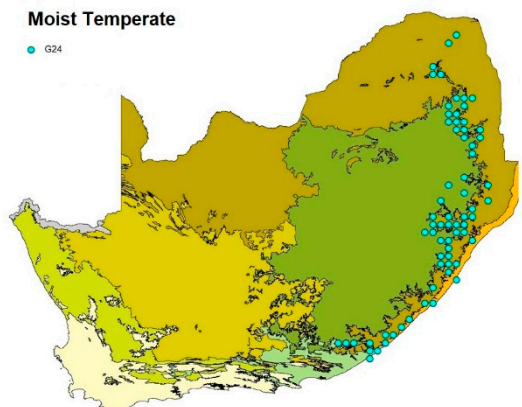
**Northern Subtropical**

- G23
- G22
- G14



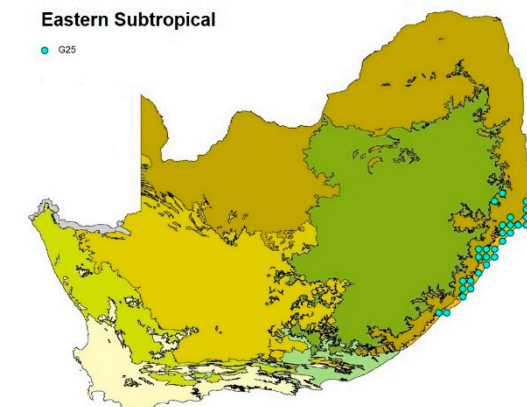
**Moist Temperate**

- G24

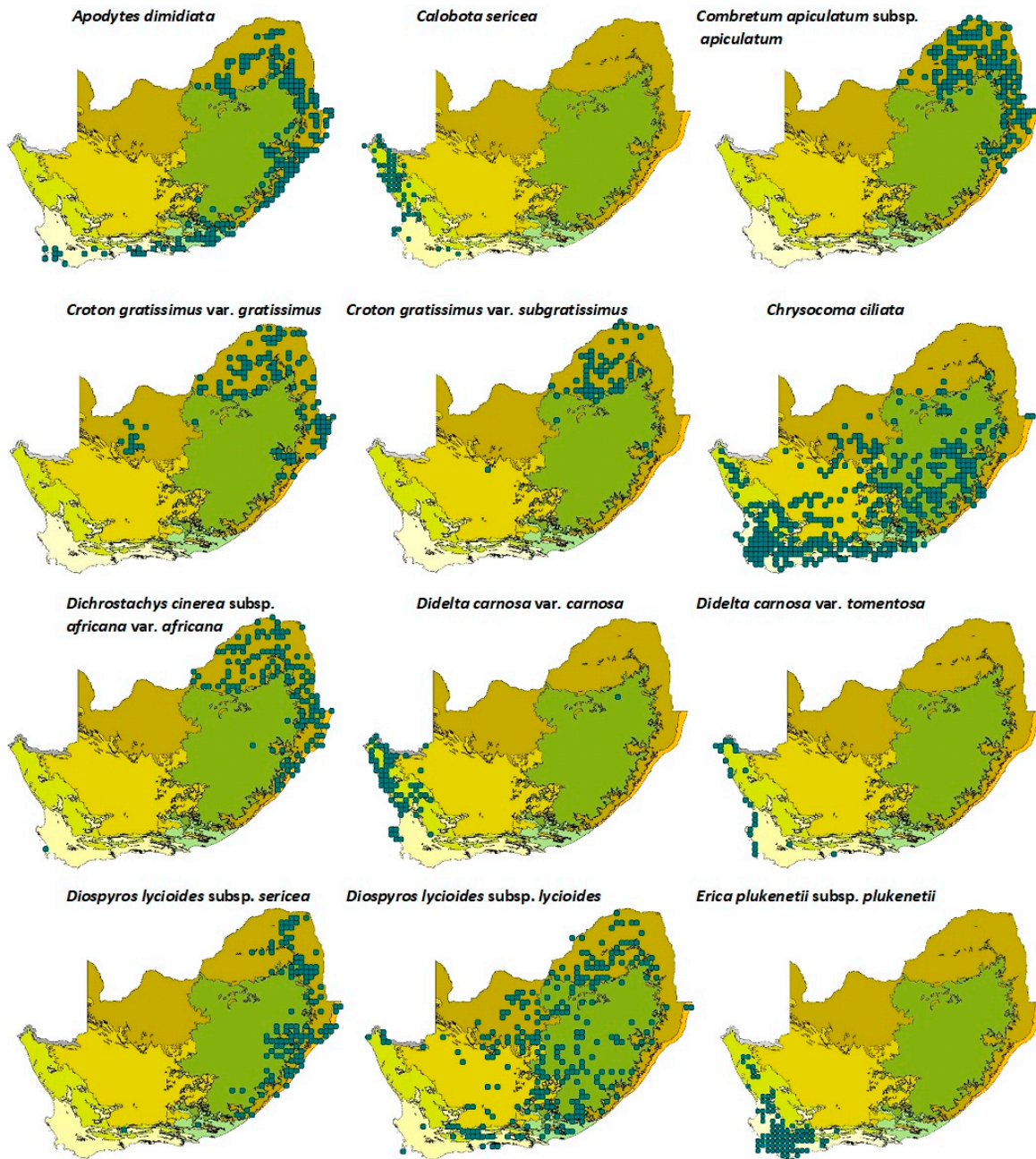


**Eastern Subtropical**

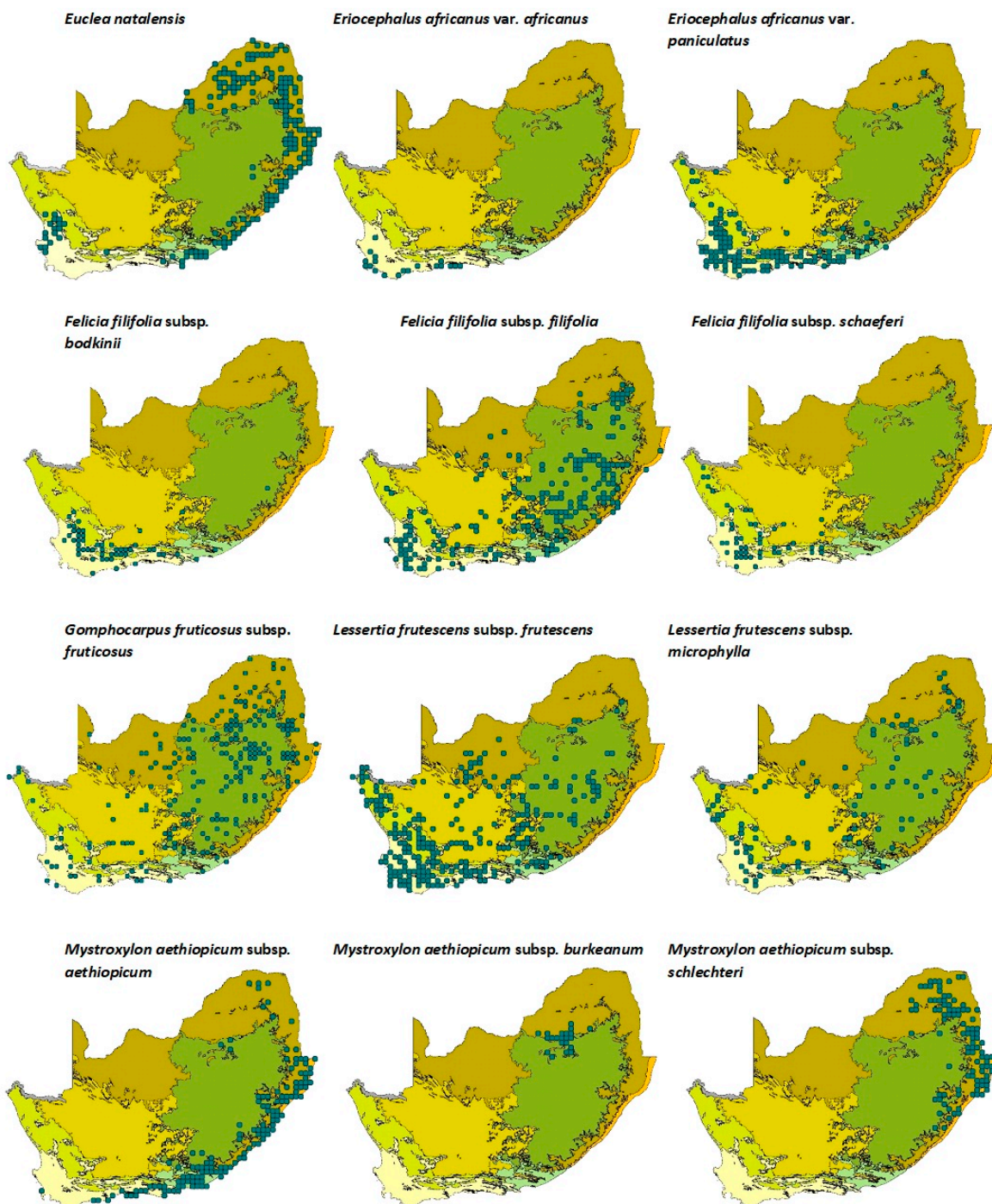
- G25

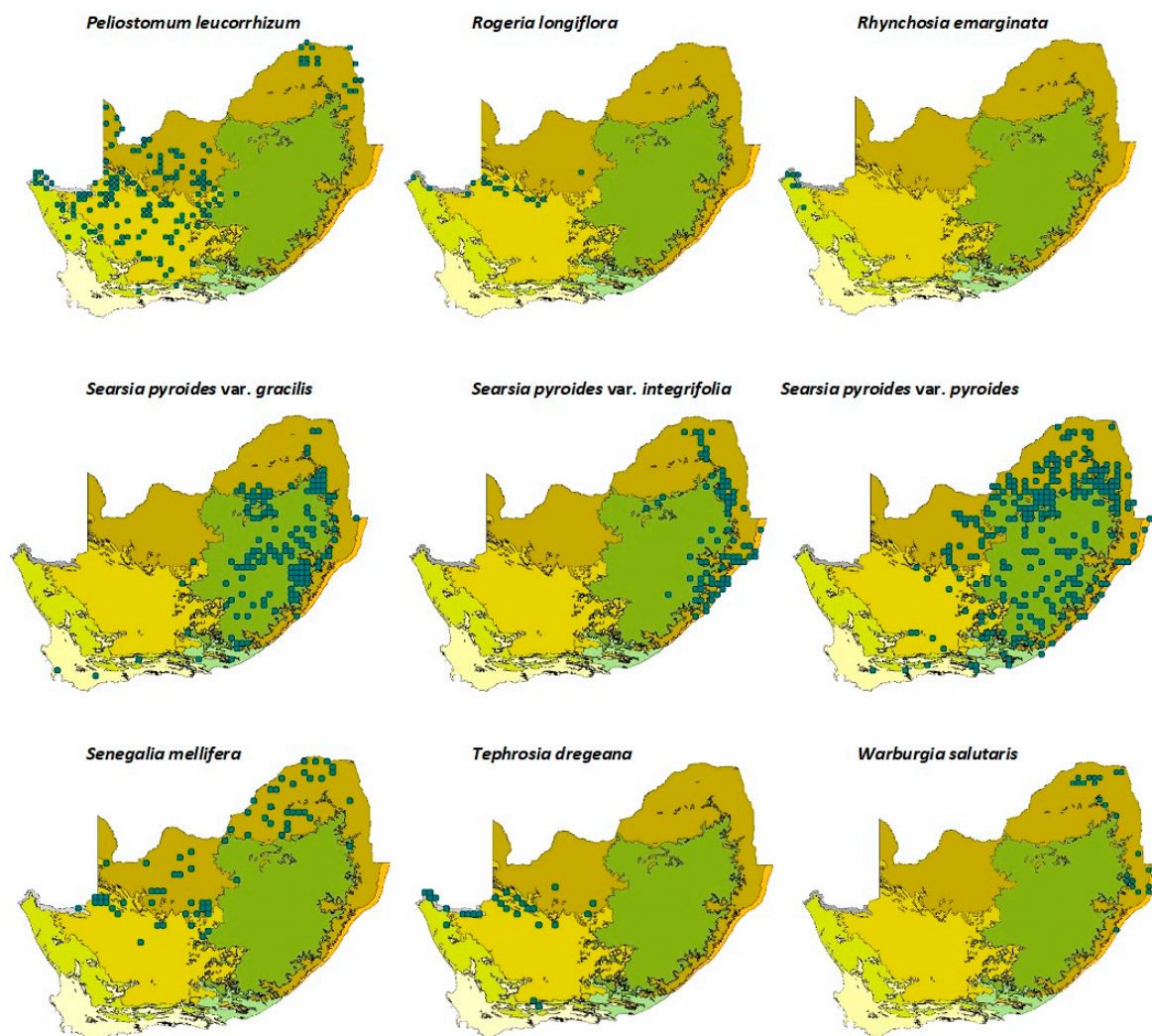


**Figure S1.** Clusters formed by AHC assigned to a generalist group and seven browse-choria with clear geographical boundaries. The numbers preceded by “G” supplied for the coloured dots are those of the clusters depicted in the AHC-resulted dendrogram shown in Figure 1.









**Figure S2.** Distribution patterns of key, annual, endangered and invasive browse of South Africa, Eswatini and Lesotho. Scientific names of taxa are supplied above their respective distribution maps.

**Table S1.** A list of declared woody encroacher species, indigenous to South Africa, Eswatini and Lesotho, browsed by livestock and game [17].

Species	Growth form	Browser type	Key browse-chorion (% of records)
<i>Azima tetraacantha</i>	Dwarf shrub/shrub/climber	Livestock and game	ST (42)
<i>Colophospermum mopane</i>	Tree	Livestock and game	NS (100)
<i>Combretum apiculatum</i> subsp. <i>apiculatum</i>	Shrub/tree	Livestock and game	NS (91)
<i>Commiphora pyracanthoides</i>	Shrub/tree	Game	NS (94)
<i>Dichrostachys cinerea</i> subsp. <i>africana</i> *	Shrub/tree	Livestock and game	NS (72)
<i>Diospyros lycioides</i>	Shrub/tree	Livestock and game	NS (32)
<i>Dodonaea viscosa</i> var. <i>angustifolia</i>	Shrub/tree	Livestock	ST (45)
<i>Euclea crispa</i> subsp. <i>crispa</i>	Shrub/tree	Livestock	NS (36)
<i>Euclea divinatorum</i>	Shrub/tree	Livestock and game	NS (78)
<i>Euclea undulata</i>	Shrub/tree	Livestock and game	NS (40)
<i>Grewia bicolor</i>	Shrub/tree	Livestock and game	NS (97)
<i>Grewia flava</i>	Shrub	Livestock and game	NS (47)
<i>Grewia flavescens</i>	Shrub	Livestock and game	NS (97)
<i>Grewia monticola</i>	Shrub/tree	Livestock and game	NS (91)
<i>Gymnosporia polyacantha</i>	Shrub/tree	Livestock and game	NS (50)
<i>Gymnosporia senegalensis</i>	Shrub/tree	Livestock	NS (77)
<i>Senegalia ataxacantha</i>	Shrub/climber/tree	Livestock and game	NS (48)
<i>Senegalia caffra</i>	Shrub/tree	Livestock and game	NS (47)
<i>Senegalia erubescens</i>	Shrub/tree	Game	NS (100)
<i>Senegalia fleckii</i>	Shrub/tree	Game	NS (83)
<i>Senegalia mellifera</i> subsp. <i>detinens</i> *	Shrub/tree	Livestock and game	CA, NS (88)

<i>Senegalia nigrescens</i>	Tree	Livestock and game	NS (92)
<i>Senegalia senegal</i> var. <i>rostrata</i>	Shrub/tree	Game	NS (78)
<i>Seriphium plumosum</i>	Shrub	Livestock	ST (39)
<i>Strychnos madagascariensis</i>	Shrub/tree	Livestock and game	NS (72)
<i>Tarchonanthus camphoratus</i> *	Shrub/tree	Livestock and game	NS (32)
<i>Terminalia sericea</i>	Tree	Livestock	NS (83)
<i>Vachellia exuvialis</i>	Shrub/tree	Game	NS (96)
<i>Vachellia gerrardii</i> subsp. <i>gerrardii</i> var. <i>gerrardii</i>	Shrub/tree	Game	NS (79)
<i>Vachellia grandicornuta</i>	Tree	Game	NS (78)
<i>Vachellia hebeclada</i> subsp. <i>hebeclada</i> *	Shrub/tree	Game	HT (39)
<i>Vachellia karroo</i> *	Shrub/tree	Game	NS (30)
<i>Vachellia luederitzii</i> var. <i>luederitzii</i>	Shrub/tree	Game	CA (55)
<i>Vachellia luederitzii</i> var. <i>retinens</i>	Shrub/tree	Game	NS (84)
<i>Vachellia nilotica</i> subsp. <i>kraussiana</i> *	Tree	Livestock and game	NS (66)
<i>Vachellia sieberiana</i> var. <i>woodii</i>	Tree	Livestock and game	MT, NS (78)
<i>Vachellia tortilis</i> subsp. <i>heteracantha</i> *	Shrub/tree	Livestock and game	NS (61)

\*Listed as the most invasive indigenous species in southern Africa.