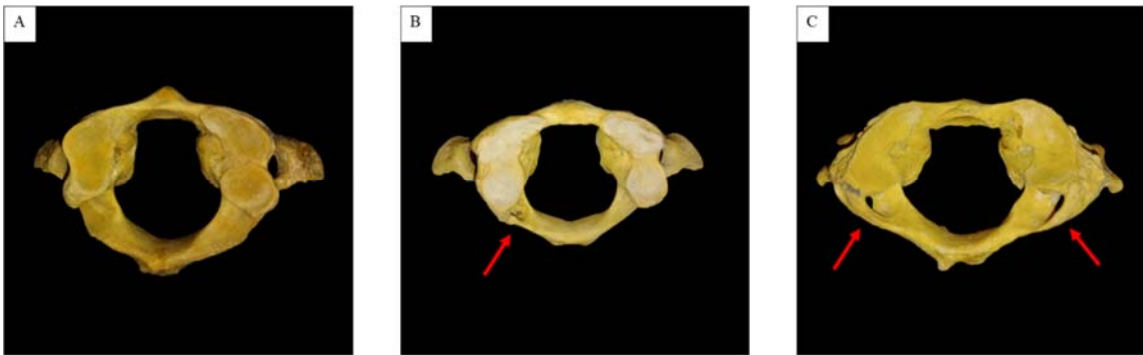
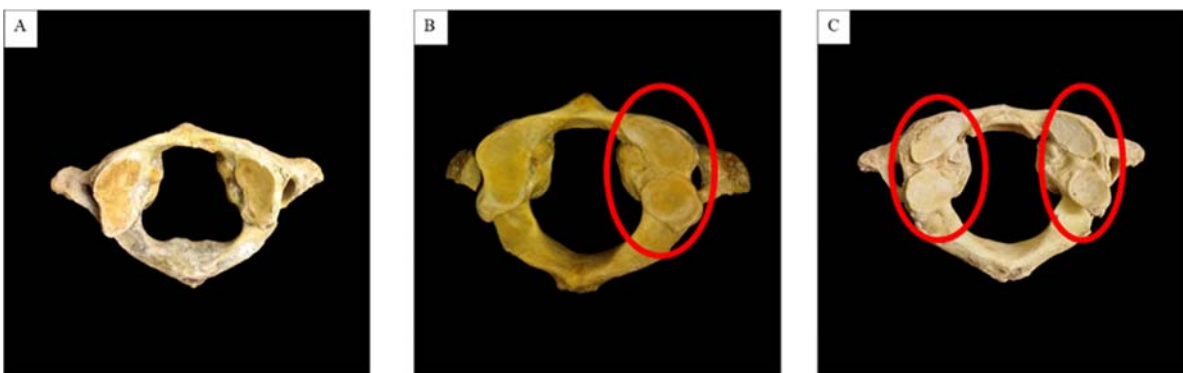


**Figure A- 1.** Accessory Transverse Foramen (red circle) A. Absent (score = 0), B. Unilateral (score = 1), C. Bilateral (score = 2).



**Figure A- 2.** Posterior Bridging (red circle). A. Absent (score = 0), B. Unilateral (score = 1) and C. Bilateral (score = 2)



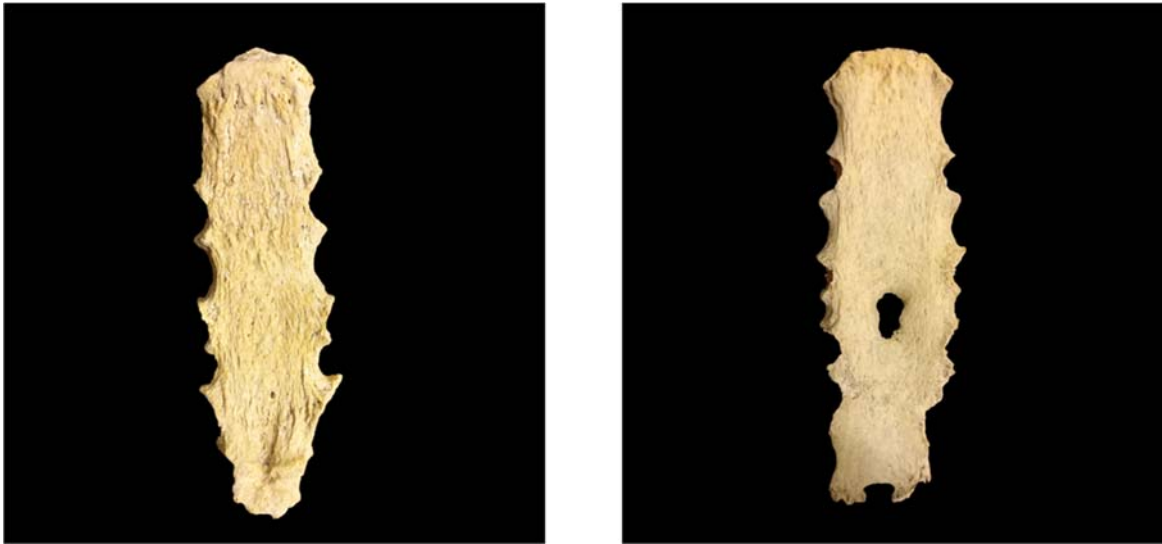
**Figure A- 3.** Double Superior Articular Facets (red circle). A. Absent (score = 0), B. Unilateral (score = 1) and C. Bilateral (score = 2).



**Figure A- 4.** Spinous Process Bifurcation (black arrows). A. Non-bifid (score = 0), B. Partially bifid (score = 1) and C. Completely bifid (score = 2) (*Spiros, 2019*) (Photos by NP Bothma).



**Figure A- 5.** Suprascapular foramen (black dot). A. Absent (score = 0) and B. Present (score = 1).



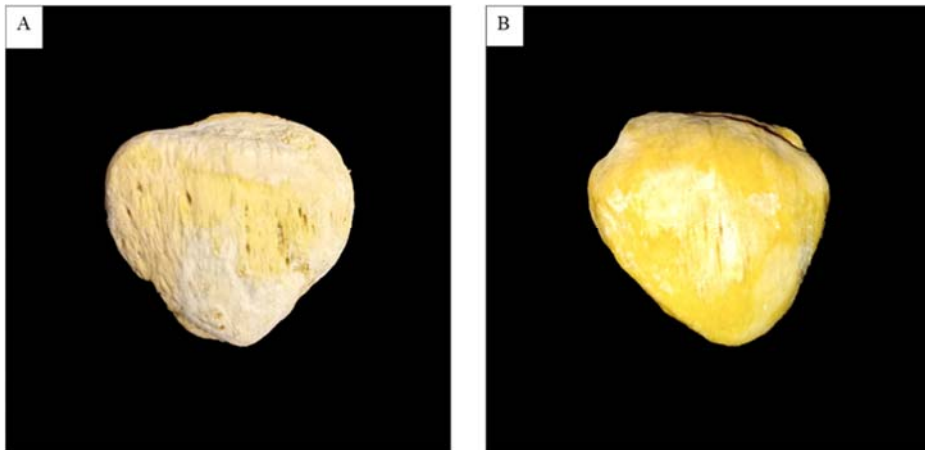
**Figure A- 6.** Sternal Aperture (black arrow). A. Absent (score = 0) and B. Present (score = 1).



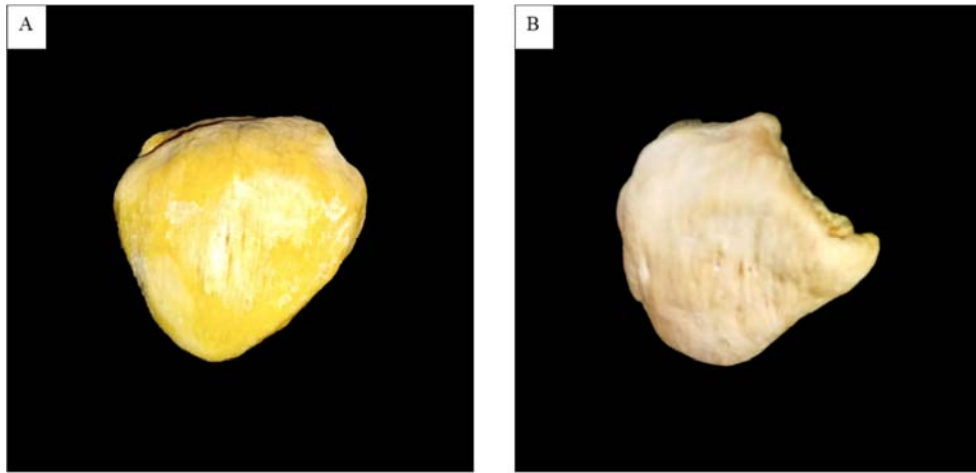
**Figure A- 7.** Septal Aperture (black arrows). A. Absent (score = 0), B. Translucent (score = 1), C. Small perforation (score = 2) and D. Large perforation (score = 3).



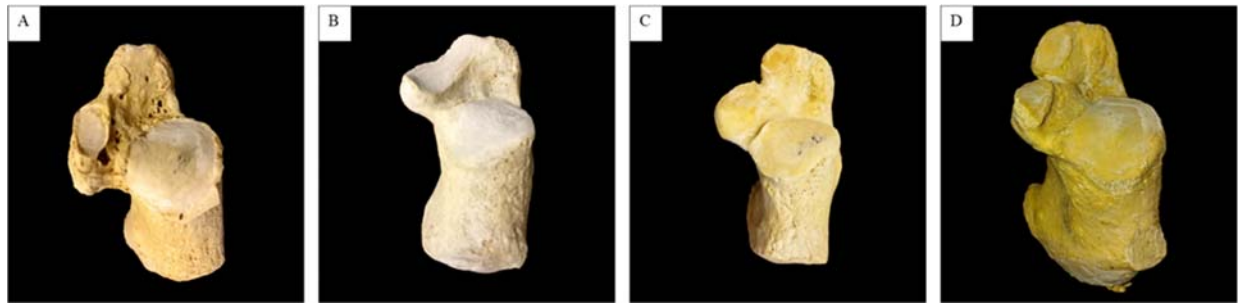
**Figure A- 8.** Third Trochanter (represented by oval). A. Absent (score = 0) and B. Present (score = 1).



**Figure A-9.** Vastus Notch. A. Absent (score = 0) and B. Present (score = 1).



**Figure A- 10.** A. Patella with a vastus notch and B. Bipartite patella.



**Figure A- 11.** Anterior and middle calcaneal facets (black arrow showing Anterior facet and joined facets). A. Absent Anterior Facet (score = 0), B. Single Elongated Facet (score = 1), C. Small Anterior Facet (score = 2) and D. Large Anterior Facet (score = 3).