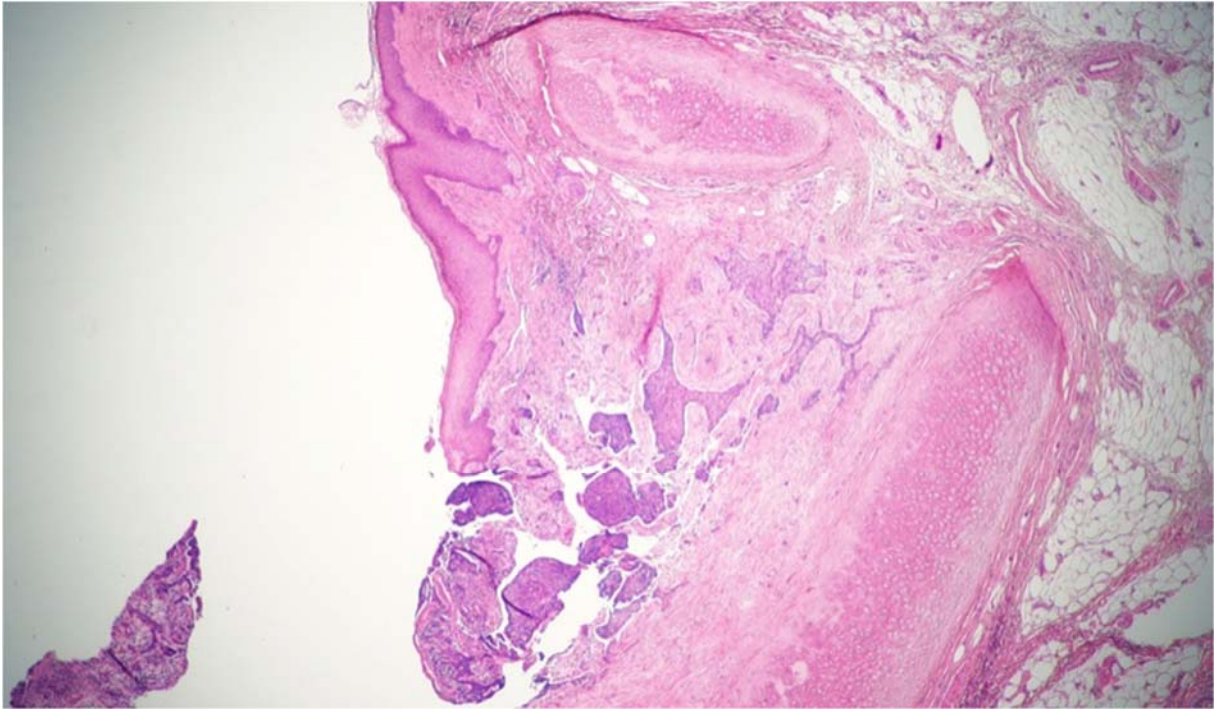
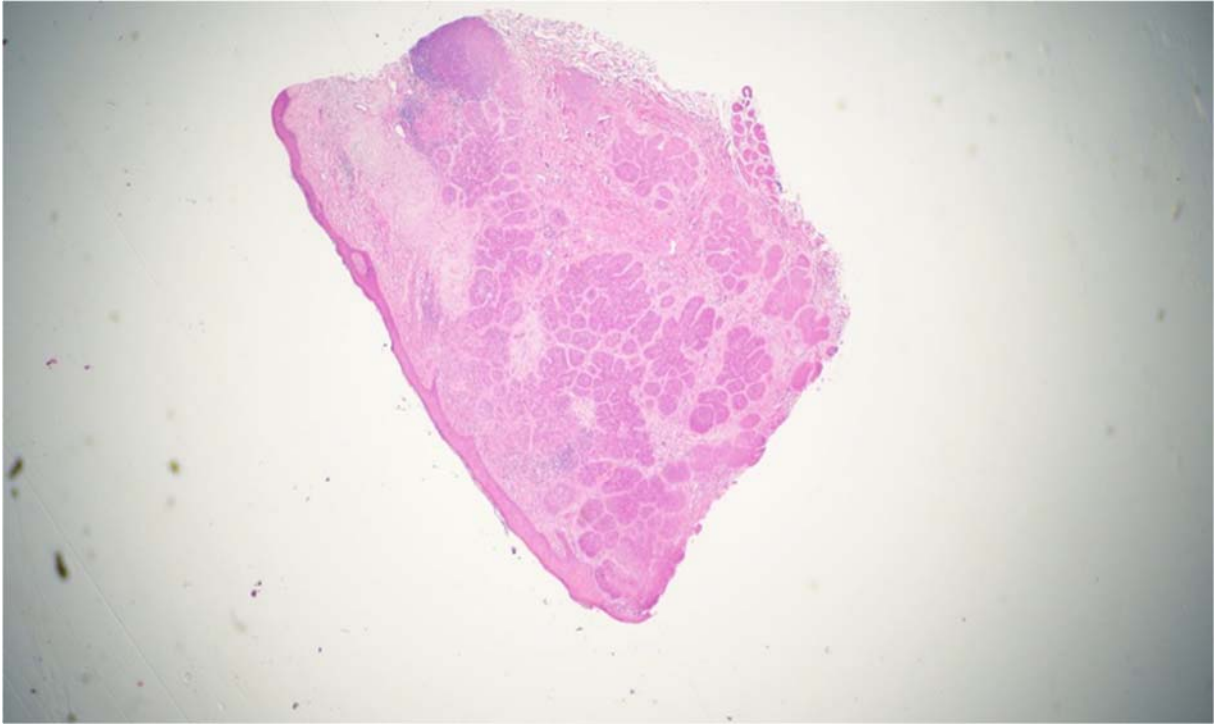


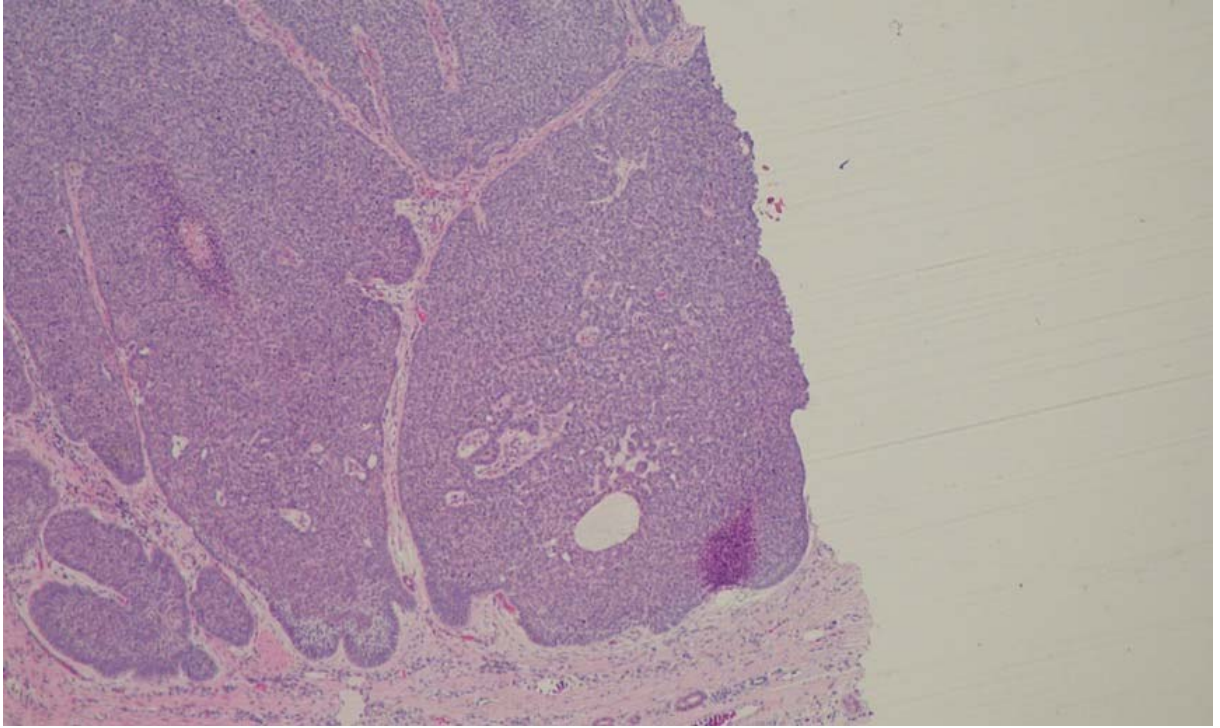
Supplementary Figure 1: BCC with squamous differentiation: The opposite side of the ulcer shows the biphasic nature of the tumor with a squamous differentiation with several nests.



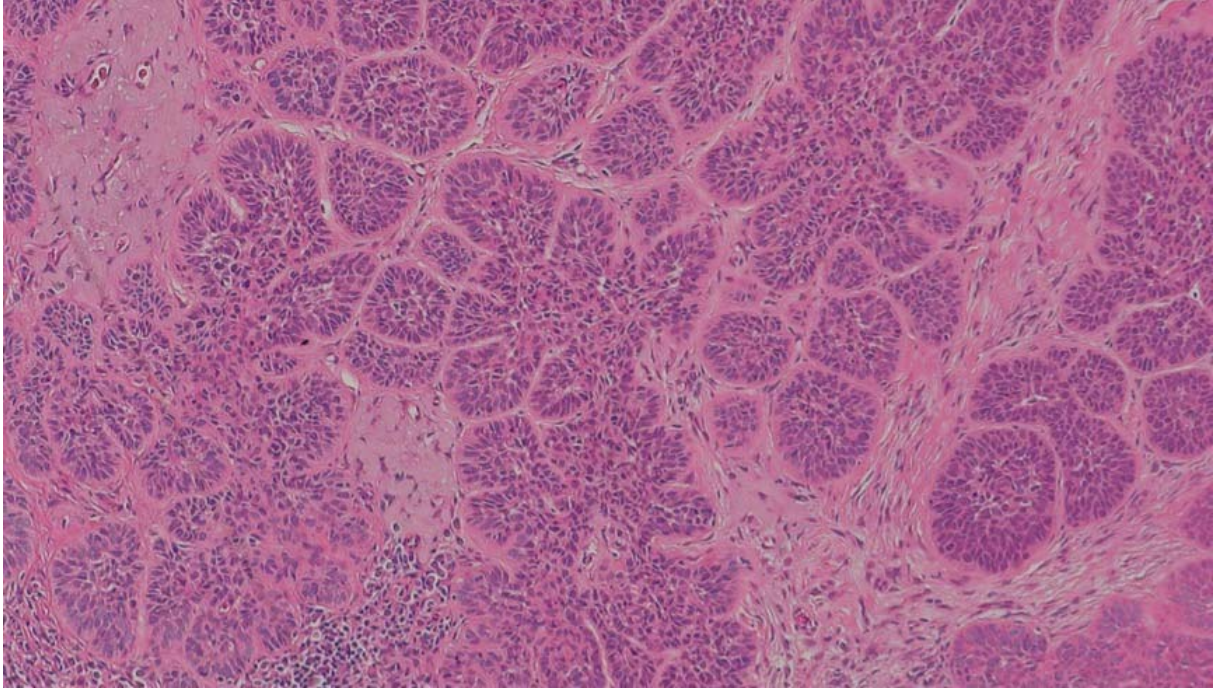
Supplementary Figure 2a: Micronodular BCC composed of small basaloid nests.



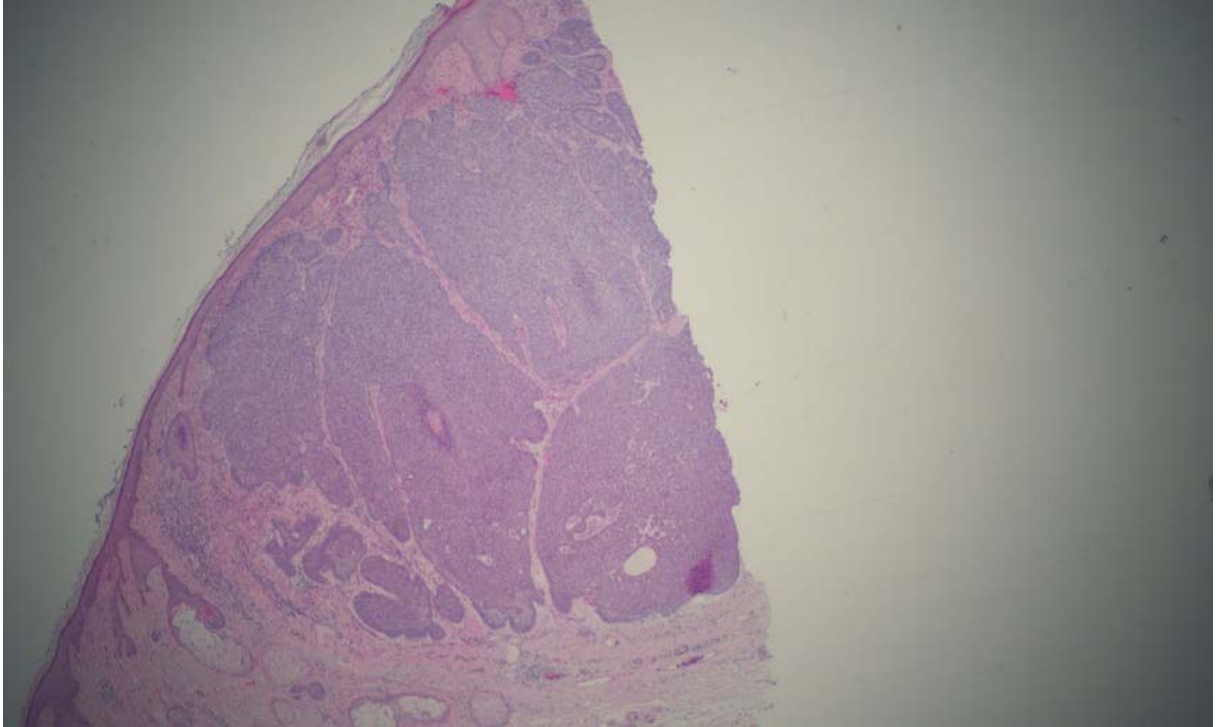
Supplementary Figure 2b: Micronodular BCC with a focal area of squamous differentiation. There is no stromal retraction noted. There is background solar elastosis noted.



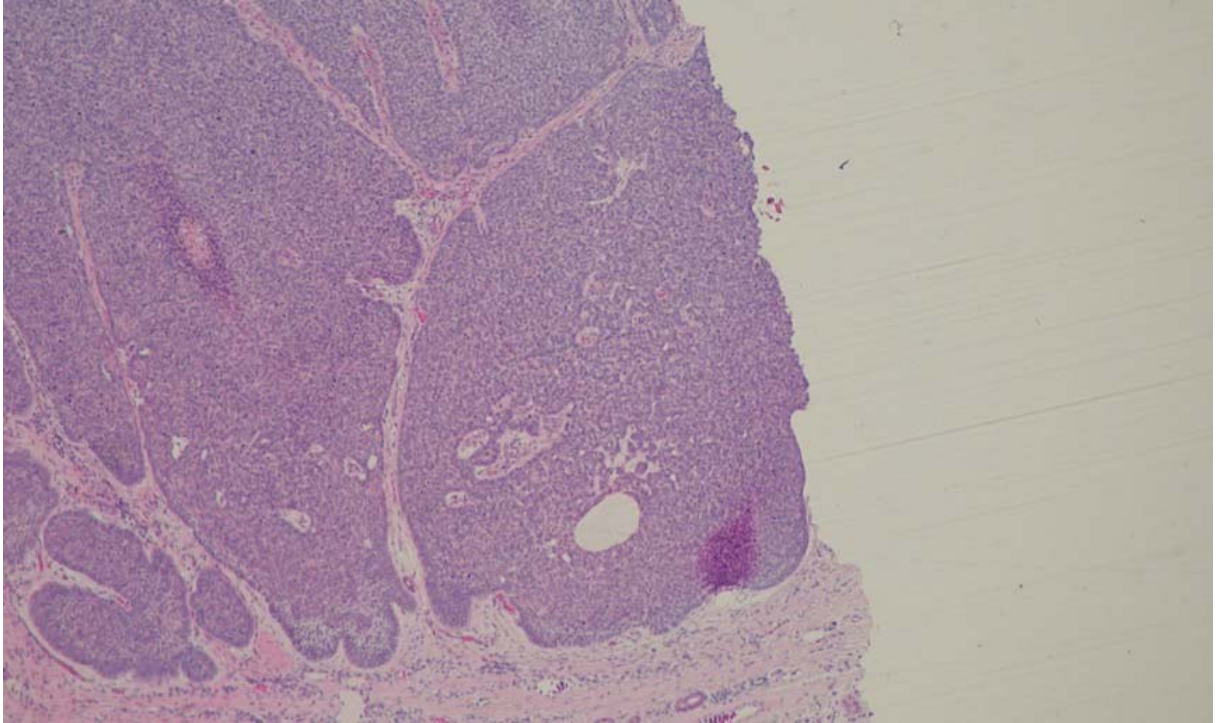
Supplementary Figure 2c: Nodular BCC – the nests show minimal palisation. There is no stromal retraction noted. There is background solar elastosis noted.



Supplementary Figure 3a: Nodular BCC composed of large basaloid nodules surrounded by a fibromyxoid stroma.



Supplementary Figure 3b: Basaloid nodules showing peripheral palisation. Occasional cystic spaces are noted within the lobules.



Supplementary Figure 3c: The neoplastic cells showing nuclei with moderate pleomorphism. Peripheral palisation is noted. Several mitotic figures are identified.

