

Personality and behavioural syndrome in the Namaqua rock mouse (*Micaelamys namaquensis*)

Tasha Oosthuizen, Heike Lutermann*

Mammal Research Institute, Department of Zoology and Entomology, Faculty of Natural and Agricultural Sciences, University of Pretoria, Pretoria, 0082, South Africa

Figure S1. The timeline of personality assessments in relation to capture. Assessment 1 was conducted in the field laboratory on the day of capture of the animal.

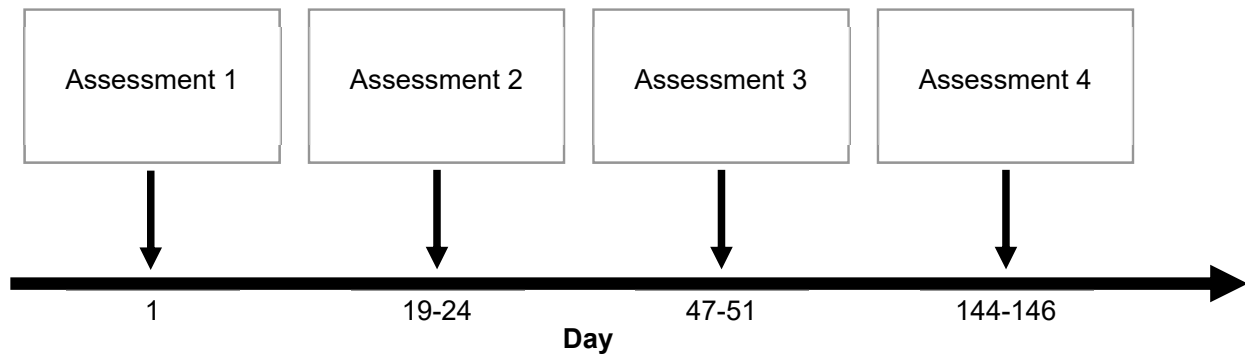


Figure S2. Distribution of PC raw data for exploration of 23 Namaqua rock mouse individuals measured across four assessments.

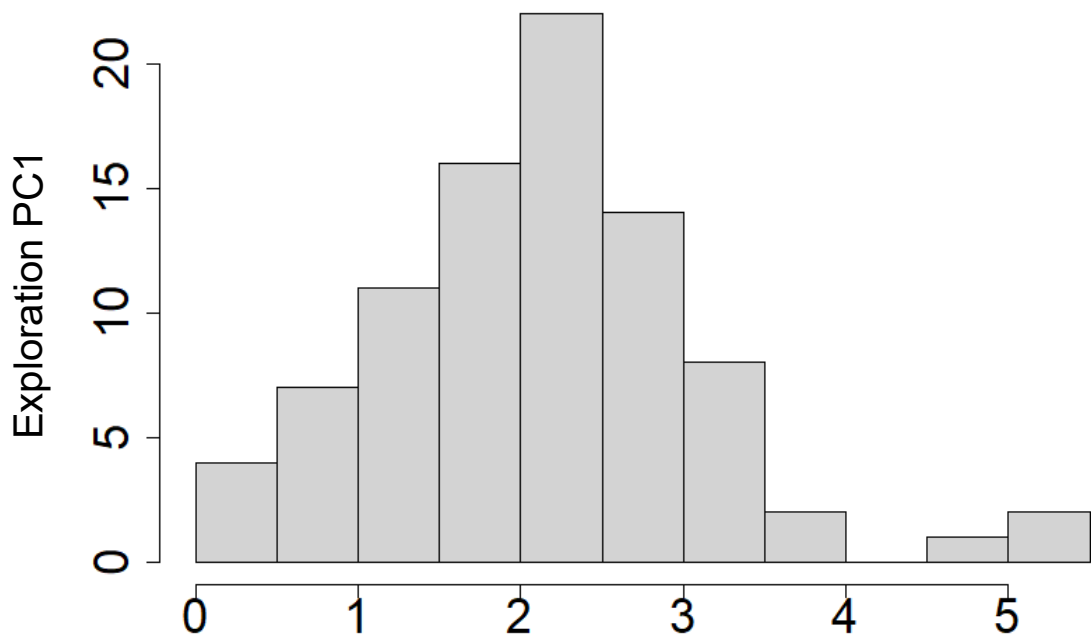
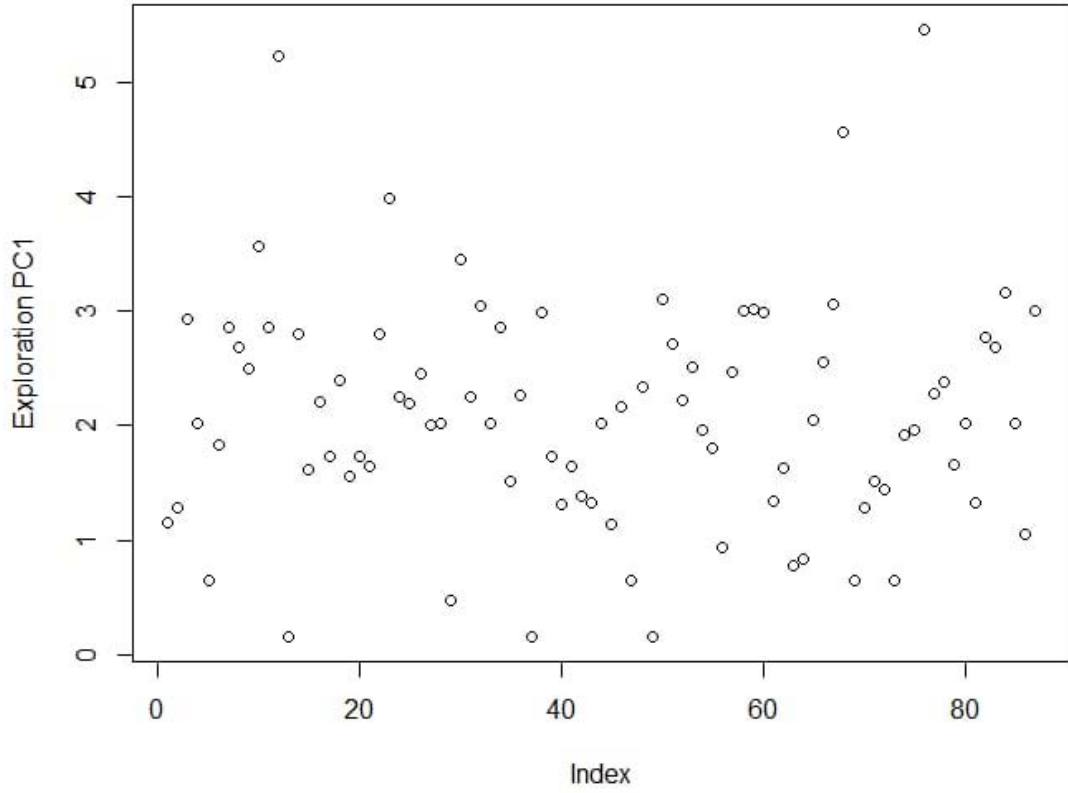


Figure S3. Distribution of PC raw data for boldness of 23 Namaqua rock mouse individuals measured across four assessments.

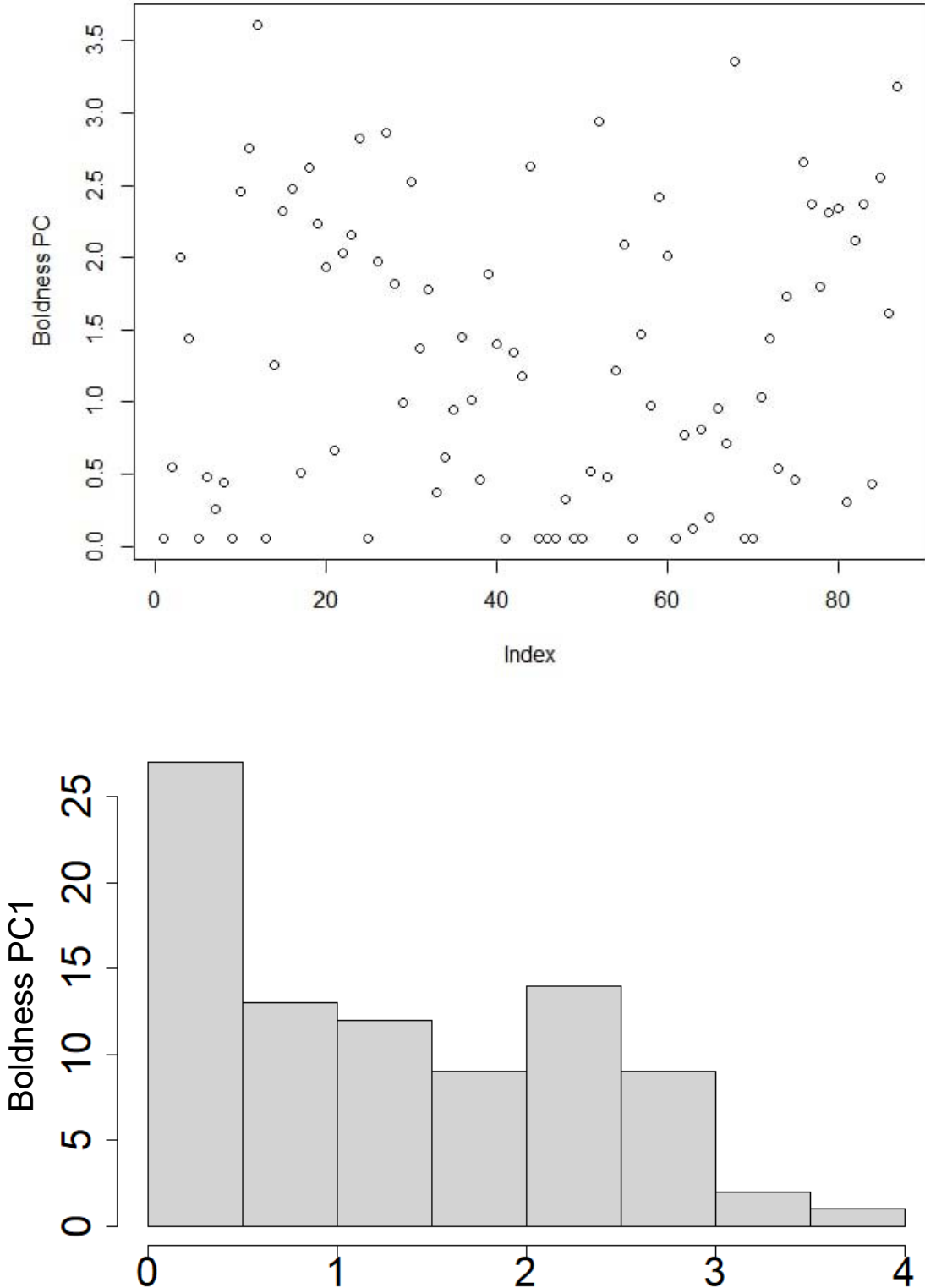


Figure S4. Distribution of PC raw data for boldness of 23 Namaqua rock mouse individuals measured across four assessments.

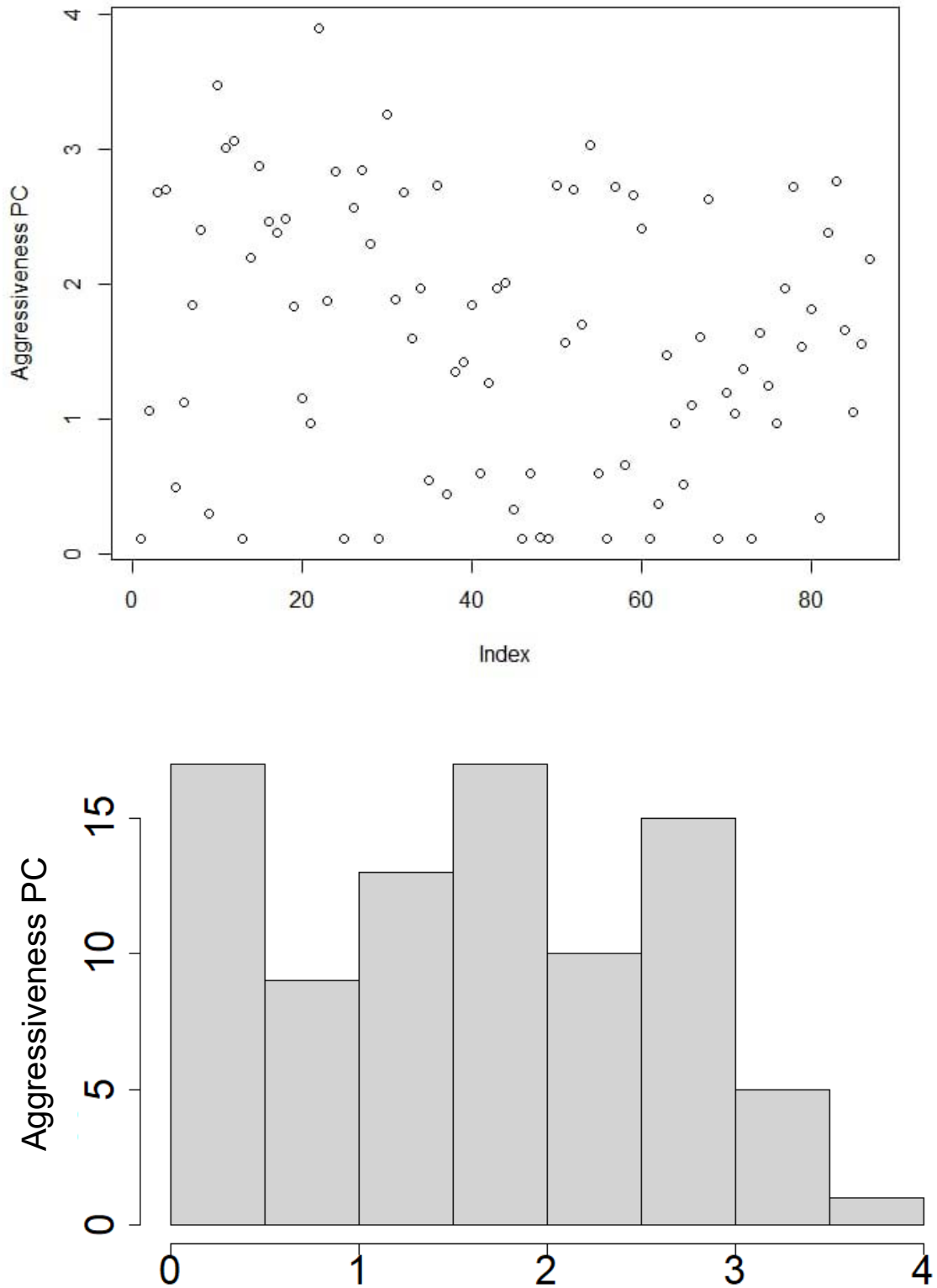


Figure S5: The correlation between Exploration (x-axis) and Aggression (y-axis).

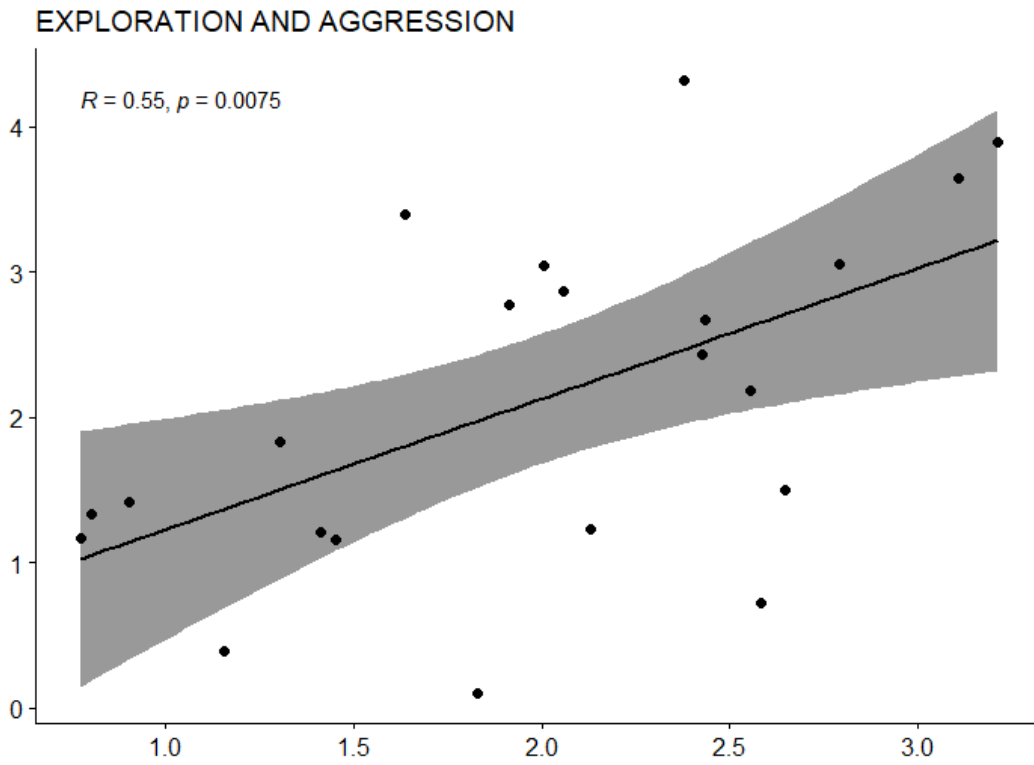


Figure S6: The correlation between Boldness (x-axis) and Aggression (y-axis).

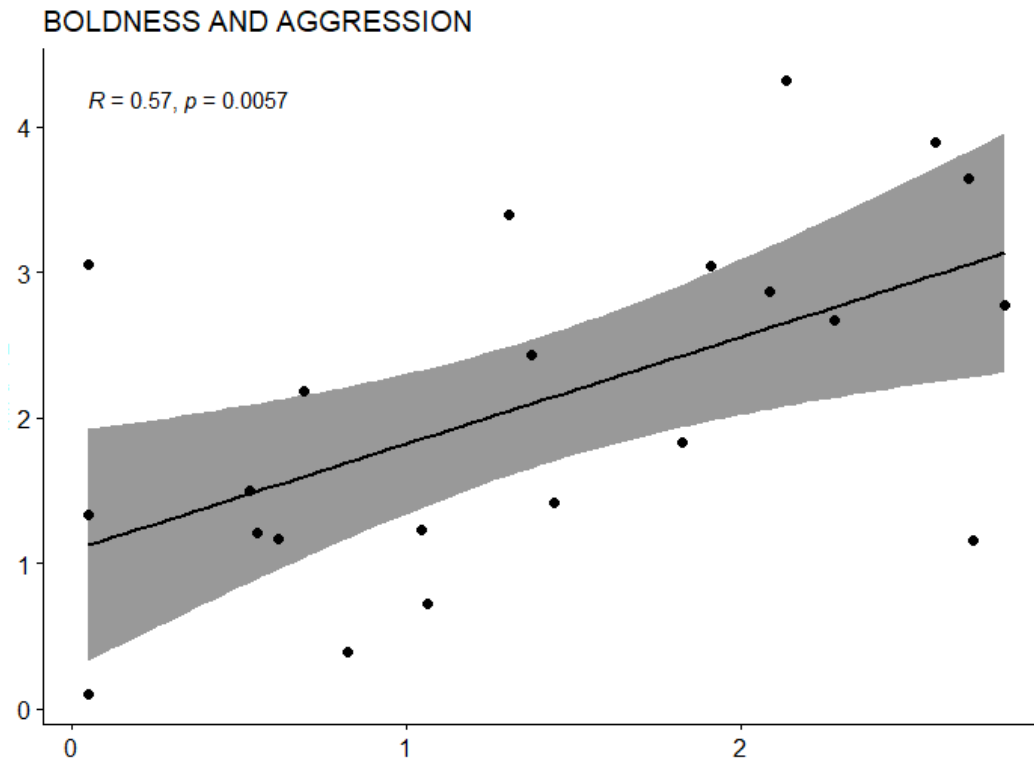


Figure S7: The correlation between Exploration (x-axis) and Boldness (y-axis)
EXPLORATION AND BOLDNESS

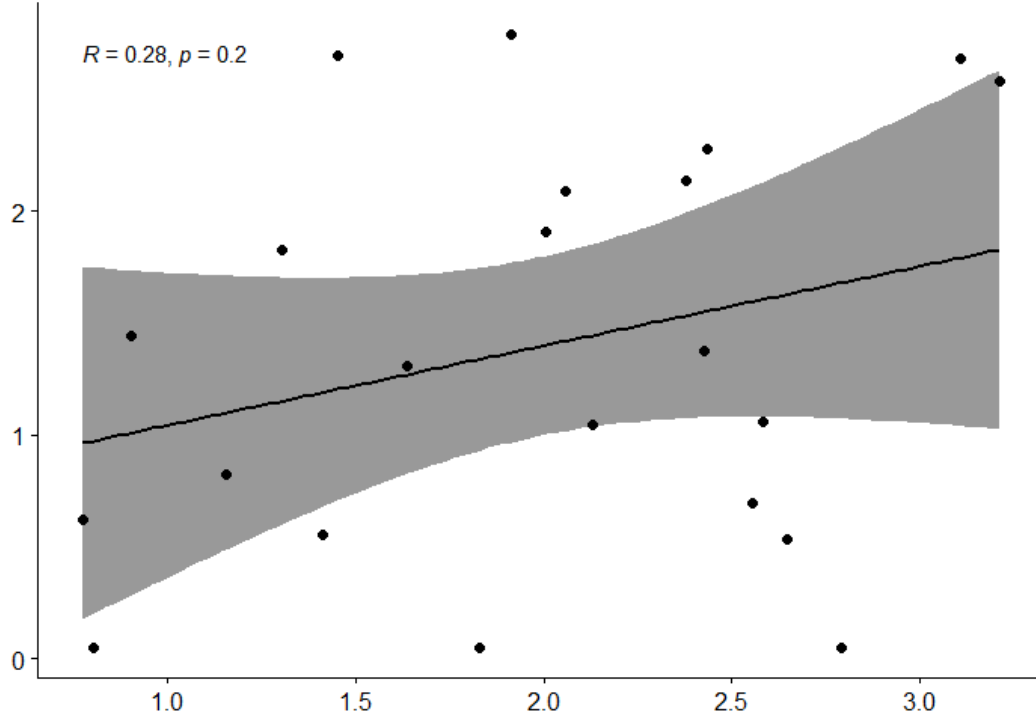


Table S1: A comparison of the full and the most parsimonious models for each test

	k	df	AICc	ΔAICc	Weight	logLik
<u>Exploration</u>						
Assessment number + Sex	2	12	251.8	0	0.783	-111.769
Assessment number + Sex + Interaction	3	13	254.3	2.5	0.217	-111.665
<u>Aggression</u>						
Assessment	1	8	243.1	0	0.545	-112.646
Assessment number + Sex + Interaction	3	13	250.1	7	0.017	-109.537
<u>Boldness</u>						
Assessment	1	8	192.4	0	0.693	-87.289
Assessment number + Sex + Interaction	3	13	202.1	9.7	0.005	-85.578