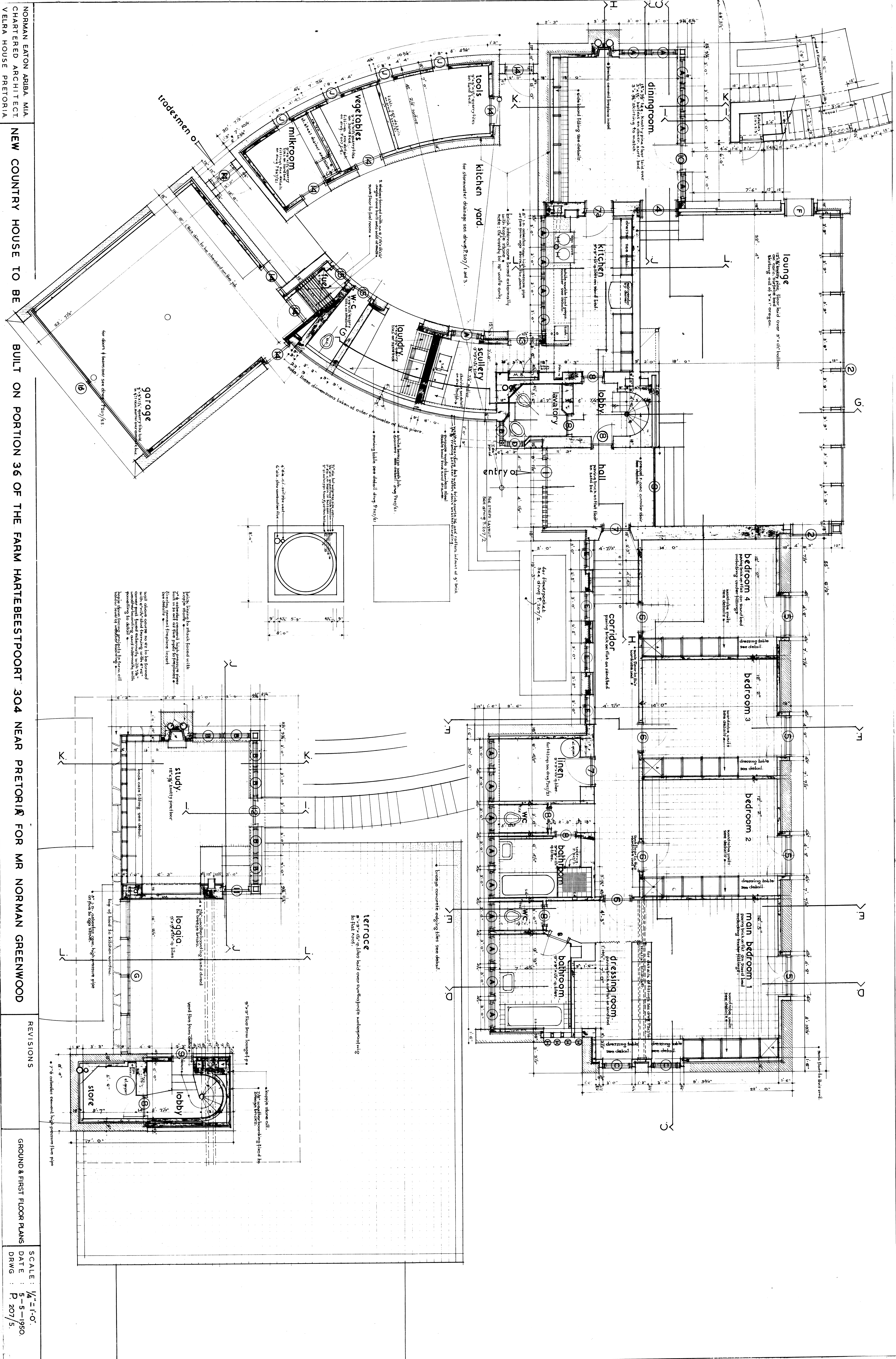


NEW COUNTRY HOUSE TO BE BUILT ON PORTION 36 OF THE FARM HARTEBESTPOORT 304 NEAR PRETORIA FOR MR NORMAN GREENWOOD

REVISIONS

GROUND & FIRST FLOOR PLANS

SCALE: 1/4" = 1'-0"  
 DATE: 5-5-1950  
 DRAWG: P. 207/5



**LEFFOCE**  
 9" x 9" x 9" tiles laid over waterproofing waterproofing to flat roof.

brickwork facing to about faced with  
 1/2" mortar. All brickwork to be laid in  
 Flemish bond. All chimney stacks to be  
 finished with stone. See detail P. 207/5  
 for details of chimney stacks.

main bedroom  
 12'0" x 12'0" including wardrobe  
 9'0" x 9'0" including wardrobe  
 9'0" x 9'0" including wardrobe

study  
 12'0" x 12'0" including wardrobe  
 9'0" x 9'0" including wardrobe

garage  
 12'0" x 12'0" including wardrobe  
 9'0" x 9'0" including wardrobe