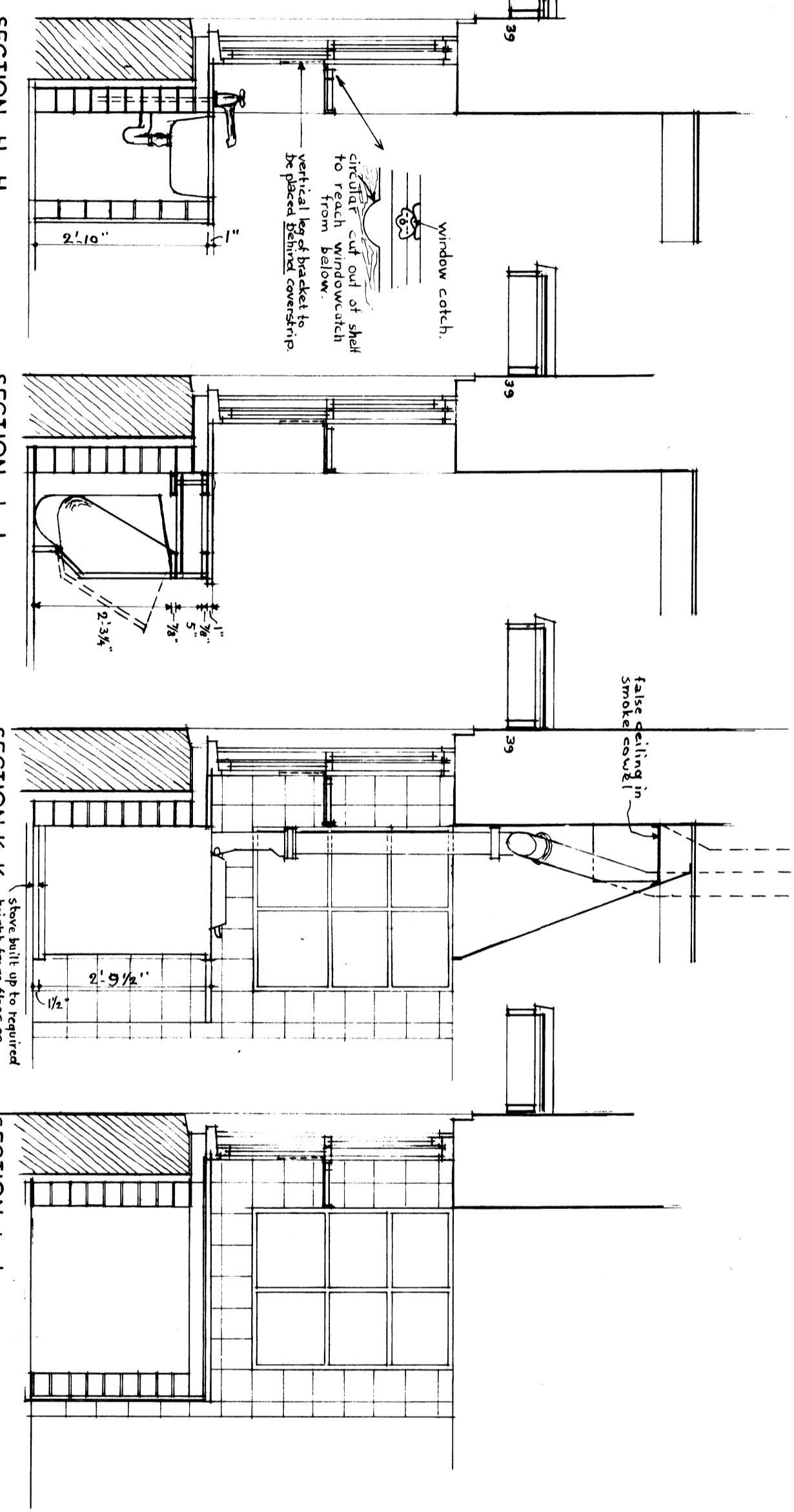
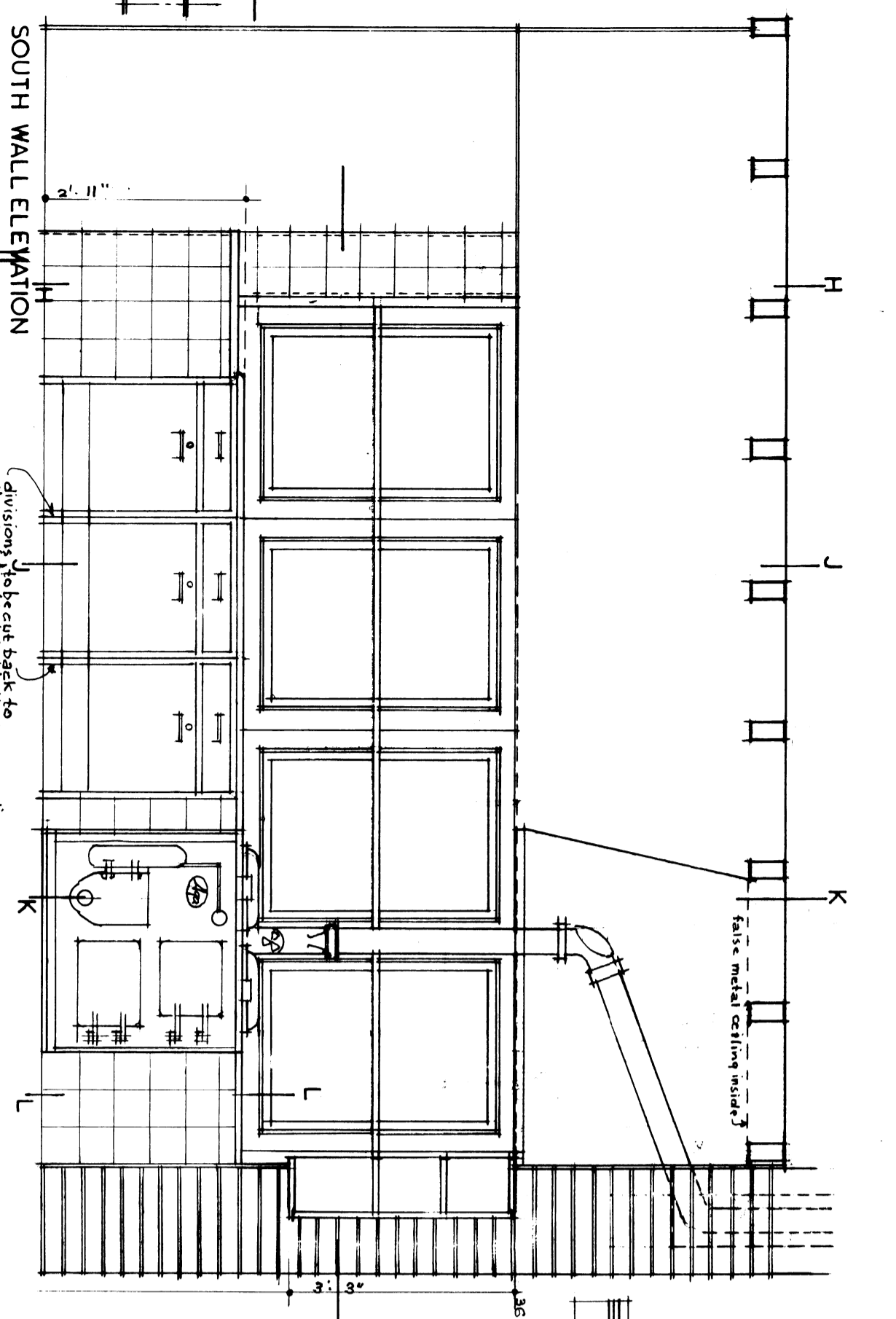
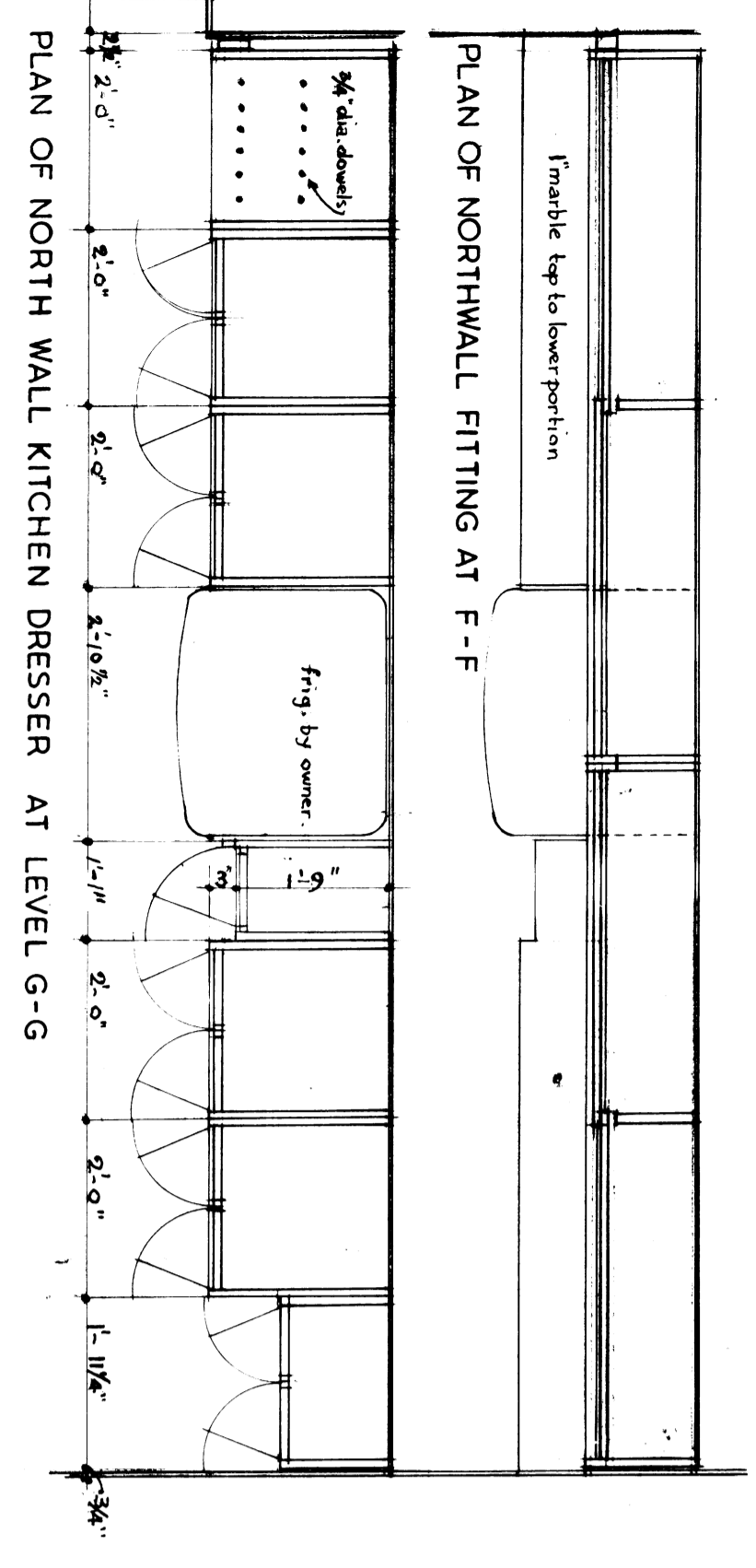


**KITCHEN DRESSER:**

To be built up out of separate units shown and marked thus [ ] units constructed of solid 3/4" sides, top and bottoms of selected close grained softwood, hoisted, glued and screwed together, the whole suitable to receive oil paint finish; all units screwed together. Doors, both sliding and hinged out of 3/8" laminated board with solid edge strips; hinged doors to have meeting edges finished with 2" deep edge strips; all doors to be suitable for paint. Table top to have 1" white marble top over.



**SOUTH WALL FITTINGS:**

TABLE: 1" thick white marble in 2 sections as marked thus: [ ] and [ ] oak top sink; 2 1/2" x 2 1/2" purpose made stainless steel sink with flat top and upturned edges complete with all fittings, faucets and having approved C.P. connections.

BACKSPLASHES: 3 units as shown; 3/8" copper balanced and made of 3/8" copper sheet iron reinforced with 3/8" x 2" oak studs; 1/2" thick purpose made stainless steel sink with flat top and upturned edges; solid sides, 4 1/2" x 3/8" rails; 3/8" solid fronts; all in selected softwood suitable for paint; slots for end nails; distance to hinge 3/8" from 1/4" sides; 1/4" back; all ground forward having 3/4" plywood bottom glued to front and board into same.

ACCESSORIES: 1 to sink trap of hardwood on slotted framing fitted with cap headed screws to fit with pattern of wall fitting.

ROOF SHELVES: out of 3/8" softwood as above.

